



BLE Health Scale - BT002

## QUICK START GUIDE



MyWay Fit



Compatibility:  
Required iOS 6 or above

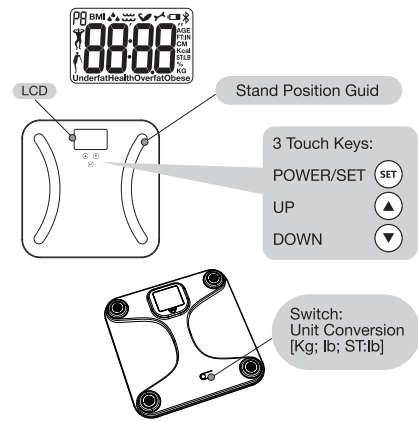


Compatibility:  
Required Android 4.3 or above  
Bluetooth 4.0

## 1 Features

Weight	10 User	Fat	BMI
Target	Water	Bone	Muscle
Scale Range	5 – 180kg	Default Setting	
BMI	2.5 -90.0	Gender	M
Body Fat Ratio	5.0-50.0 %	Age	30
Mass of Muscle Ratio	5.0-60.0 %	Height	160
		Unit	Kg/ cm Lb/ Ft/in

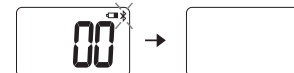
※ (1) For the auto-detect personal profile, it is limited the height as 100 ~ 200cm and the age as 5 ~ 99 years old.  
(2) For the personal setting profile (P0 to P9), it can set the height as 60~ 200cm and the age as 5 ~ 99 years old



※ If no any smartphone pairing to the scale, User can stand on the scale and measure the weight, when the weight is stableness,LCD will display the weight and flash for 2 times,(If no weight detect more than 10secs, it will turn off display)

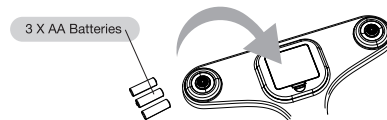
## 2 Low Battery Indication

When the battery voltage is detected on or below 3.6V, the low battery indicator symbol will turn on.  
It will keep turn on for 5 seconds and then the device will turn off.



## 3 Battery Replacement

- 1). Remove the battery cover.
- 2). Remove the old battery and insert new AA battery(3pcs).
- 3). Close the battery cover.



Read more >>>



正面

## 4 Bluetooth Connection

In order to synchronize the data between the device and smartphone, it is recommended to pair the device with smart phone first.

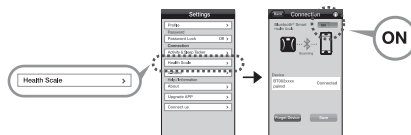
- 1). Download and install [MyWay Fit], open the APP:



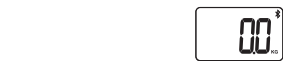
- 2). On the Homepage, click the bottom left corner icon to go to the settings page in order to pair the device.

- 3). On the settings page, tap the **Health Scale** in the Connection field to go to the Health Scale connection page.

- 4). On the connection page, swipe the bluetooth slide to [ON].

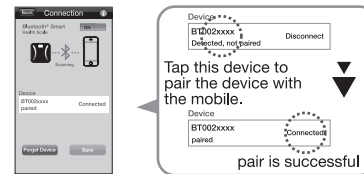


- 5). After new batteries are inserted, the scale will entry the scale mode with Bluetooth on condition.



- 6). If the APP finds the device, it will show on the APP. Tap this device to pair the device with the mobile.

- 7). If pair is successful, it will show status as “**Connected**” on the APP.



## 5 Operation

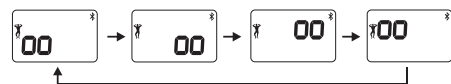
If the smartphone had paired to the scale successful, the user profile from the smartphone will send to the scale and the Bluetooth icon will turn on.



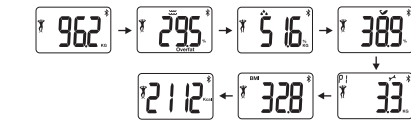
If the scale succeed to get the user profile from the smartphone, the Gender icon will turn on too.

The user stand on the scale to measure the weight at this state, when the weight is stableness, LCD display will flash for 2 seconds to confirm the weight.

Then, it will measure the body composition, the measuring display as below:



After complete the body composition measurement, it will start to show all data for the user representing finish measurement.



※ The scale will transmit the data to the APPs after measurement directly.  
(Also the scale will display the corresponding data and loop 2 times.  
And then, it will turn off automatically)

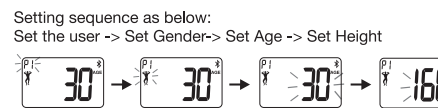
## 6 Personnel Information Setting

Under the state of the smartphone which had paired to the scale, when the user press “Power/ Set” key, it can go to set the personal information mode.



P0 will flashing, user can use key to set the user from P0 to P9.

Setting sequence as below:  
Set the user -> Set Gender-> Set Age -> Set Height



PS: By using the key to set the value and press POWER/ SET key to confirm.

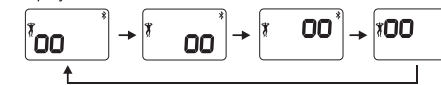
After Setting all profile, it will turn back the scale mode.



At this moment, stand on the scale to measure the weight at this state, when the weight is stableness, LCD display will flash for 2s to confirm the weight.



Then, it will measure the body composition, the measuring display as below.



The scale will transmit the data to the APPs after measurement directly. (Also the scale will display the corresponding data and loop 2 times. And then, it will turn off automatically)

After complete the body composition measurement, it will start to show all data for the user representing finish measurement.

Even if the Bluetooth not connected, it can also same as above that can entry the personal information setting mode when press the Power/Set key.

## FCC Statement

This equipment has been tested and found to comply with the limits for a Class B digital device, pursuant to part 15 of the FCC Rules. These limits are designed to provide reasonable protection against harmful interference in a residential installation. This equipment generates uses and can radiate radio frequency energy and, if not installed and used in accordance with the instructions, may cause harmful interference to radio communications. However, there is no guarantee that interference will not occur in a particular installation. If this equipment does cause harmful interference to radio or television reception, which can be determined by turning the equipment off and on, the user is encouraged to try to correct the interference by one or more of the following measures:

- Reorient or relocate the receiving antenna.
- Increase the separation between the equipment and receiver.
- Connect the equipment into an outlet on a circuit different from that to which the receiver is connected.
- Consult the dealer or an experienced radio/TV technician for help.

## FCC Statement

This device complies with FCC radiation exposure limits set forth for an uncontrolled environment. This device complies with Part 15 of the FCC Rules. Operation is subject to the following two conditions: (1) this device may not cause harmful interference, and (2) this device must accept any interference received, including interference that may cause undesired operation.

## Caution!

Any changes or modifications not expressly approved by the party responsible for compliance could void the user's authority to operate the equipment.