

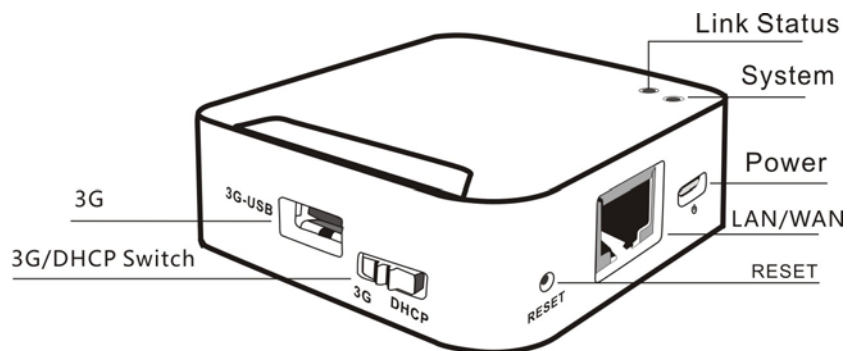
RedPort Satellite Optimizer M4 Quick Start Guide

Package Contents:

- One M3 Mini 3G Router
- One USB data Cable
- One installation Guide

If any of above items are damaged or missing, please contact with your distributor.

Panel Layout



Name		Fuction
System LED	Blue	The Router is power on
	Blue in quickly flashing	transmission data via WiFi
	Green	LAN/WAN cable is connected but there is no data being transmitted or received
	Green in quickly flashing	LAN/WAN cable is connected but there is data being transmitted or received
Link Status LED	Light off	Battery 100% is charged, and support power to router.
	Blue in quickly flashing	Battery with low power ,and need re-charged
	Red	Battery is charging

3G Port

The port is used to connect 3G modem.

3G/DHCP Switch

This switch is used to switch operation mode of the Router between 3G and DHCP.

Power

This port is used to connect the provided power adapter.

LAN/WAN

This LAN/WAN port works as WAN in Dynamic IP/Static IP/PPPoE mode and as LAN in 3G mode. As LAN, it connects the Router to the local PC; as WAN, it enables you connect DSL/cable Modem, or Ethernet.

RESET

With the Router powered on, use a pin to press and hold the RESET button (about 8 seconds) until the LED becomes turn off, and then release the button and wait the Router reboot to its default settings.

Quick install M4

Hardware installation

1. powered by USB cable

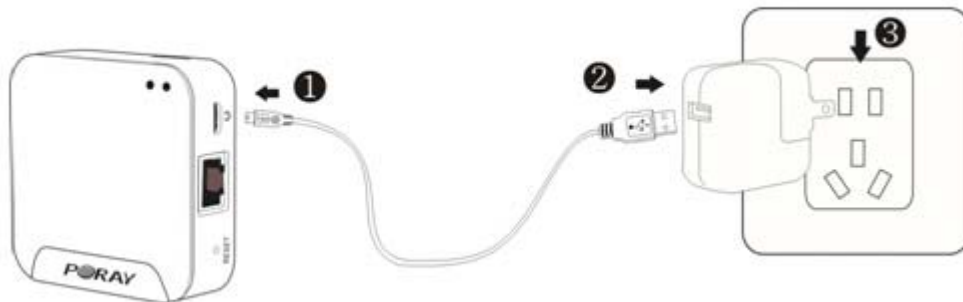
connect the Router and the computer using a USB cable like below, the Router can power on automatically.



2. Powered by USB adapter

You also can use USB adapter to supply for the Router, follow step 1, 2, 3 to connect them.

Notes: The output of the adapter should between 5V 750mAh and 5V, 2A.



Connecting the Router

Plug the power plug in the electrical wall socket. The Router will start to work automatically.


[Windows XP]

Click the "Start/Control Panel", double-click "Network Connections", in the "Wireless Network Connection" right click and select "View Available Wireless Networks", Highlight the SSID of Router (here is 3G ROUTER) and click "Connect" to add to the network. On the right shows "connected" that indicates successfully connected to the 3G router.

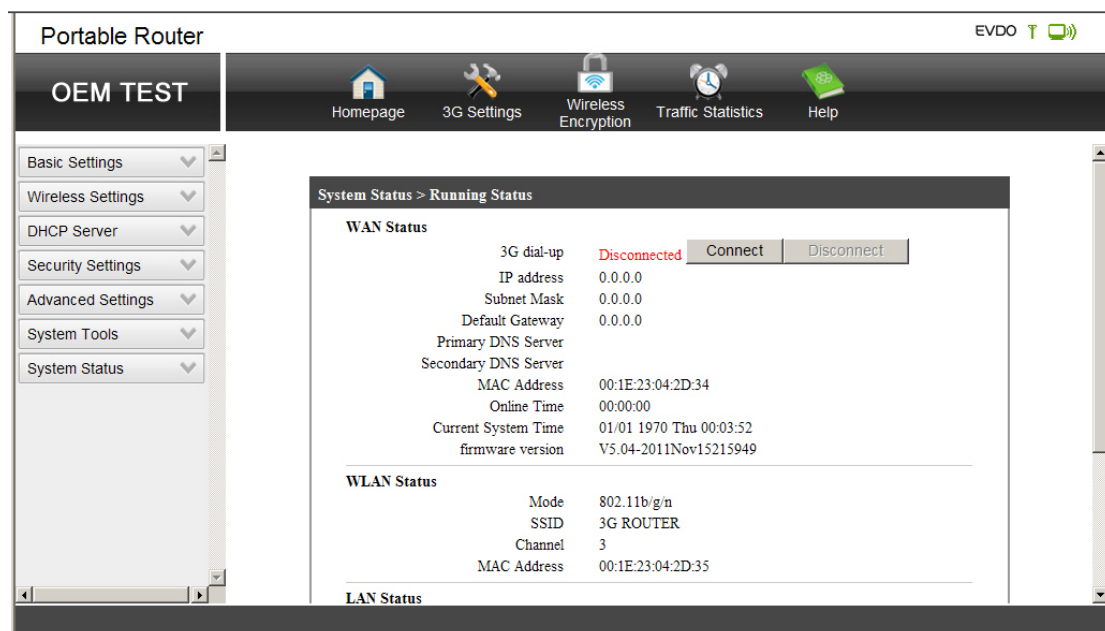
LAN or High-Speed Internet



[Winodws 7]

When 3G modem installed, the lower right corner of the computer there is a  icon, click the icon, and will see a pop-up network list, select "3G ROUTER" the wireless network, and then double-click it to connect, when the screen appears "connected".

Now let's open the IE Explorer(Iphone for Safari),type the default IP:192.168.100.1 in the Address bar, then the Username: admin, Password: admin, No bold words, click OK into the management interface:



Setting 3G Router

the router support 3G, Static IP, Dynamic IP, PPPoE, click “Basic Settings” on the left side of WEB page, so you should first choose Router’s operating mode, the default mode is “3G dialup”.

1. 3G Dial-UP

The default mode for the Router is 3G Dial-up. It already integrates many ISP parameters over the world, and customers can choose the ones they want according to 3G Modems, there is different parameters in different country.

For the foreigners, if a 3G Modem is not compatible with our Router, we can realize it from remote online control, to make your 3G modems comply our router.

Basic Settings > WAN Settings

Wan Settings

- ☐ Static IP Address
- ☐ Dynamic IP Address
- ☐ PPPoE
- ☒ 3G Dial-up

Parameters Settings

country/region	China
ISP List	China Telecom
APN	
Dialup Number	#777
Username	ctnet@mycdma.cn
Password	vnet.mobi
Online Time Range	Always online : 00 : 00 to 23 : 55

DNS Address

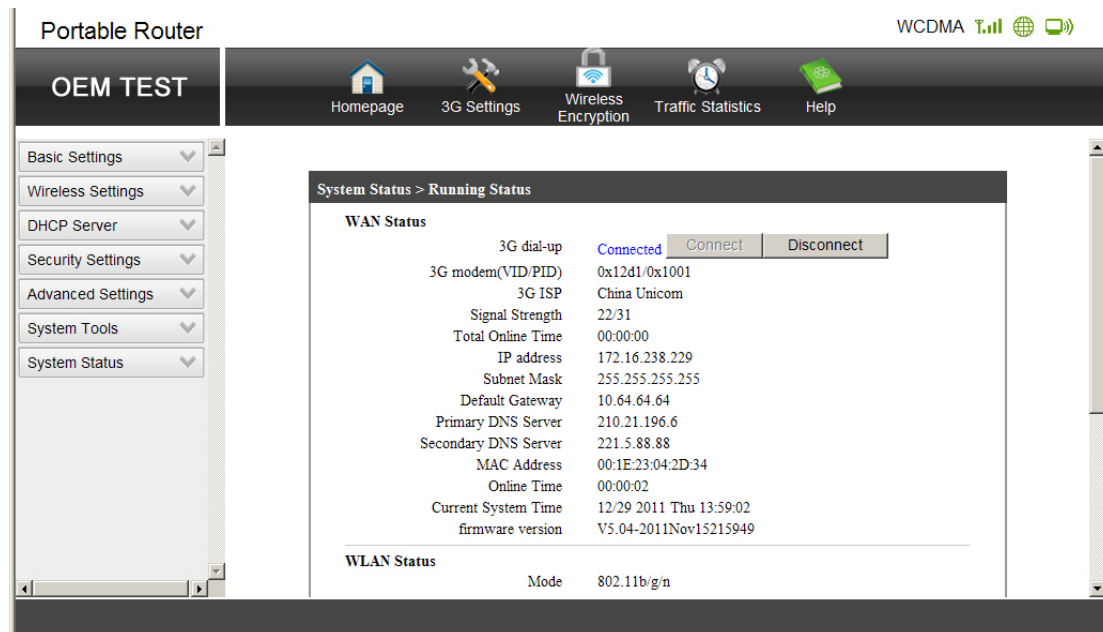
Primary DNS		(optional)
-------------	--	------------

Return to “Status > Running Status”, check “3G Dialup” says “connected”, if it’s connected, you should be able to access Internet via 3G. Other cases:

If 3G Dialup says “disconnect”, it means no 3G connection, maybe your 3G Modem is not attached to the router, you can check the Modem’s VID/PID in 3G Modem(VID/PID), if the VID/PID is Unrecognized, either the router’s USB port is bad or the 3G Modem is bad.

If “3G Dialup” says “connecting, please wait...”, it means that the router is dialing now, please wait for a moment, after 20 seconds, refresh the page until “3G Dialup” says “connected”, if the status “connecting, please wait...” has shown for a long time, please check as follows:

1. Check the 3G Router has supported your 3G Modem;
2. Check your 3G Modem can work well when directly connected to your computer.
3. Check your settings are correct.



2. PPPoE

If you have applied ADSL to realize Dial-up service, you should choose this type. Under this condition, you should fill in both the User Name and Password that the ISP supplied. Please note that these fields are case-sensitive.

Open the router WEB interface, click on the "Basic Settings> Internet access mode", select PPPoE, enter the broadband Internet account and password, click "OK" to save the settings. Return to the "System Status> running", if PPPoE dial-up displays "Connected", said that it has successfully connected to the broadband network.

Basic Settings > WAN Settings

Wan Settings

☐ Static IP Address

☐ Dynamic IP Address

☒ PPPoE

☐ 3G Dial-up

Parameters Settings

Username

sz29744997@163.gd

Password

••••••••

MTU(Maximum Transmission Unit)

1492

(546~1492)

Service Name

DNS Address

Primary DNS

210.21.196.6

(optional)

Secondary DNS

221.5.88.88

(optional)

Save

Cancel

3. Static IP

Network operators to provide you with an Internet IP address, select Static IP, static IP mode, the router's WAN port to use as an ETH port.

In the "Basic Settings> Internet access mode" select the Static IP mode, then enter your ISP's IP address, subnet mask, default gateway, DNS and other related parameters can be.

Basic Settings > WAN Settings

Wan Settings

☒ Static IP Address
☐ Dynamic IP Address
☐ PPPoE
☐ 3G Dial-up

Parameters Settings

IP Address

192.168.0.100

Subnet Mask

255.255.255.0

Default Gateway

192.168.0.1

MTU

1500

(576~1500)

DNS Address

Primary DNS

210.21.196.6

(optional)

Secondary DNS

221.5.88.88

(optional)

Save

Cancel

4. Dynamic IP

Dynamic IP is widely used in hotels and restaurants and other public places, the Router can connect via dynamic IP mode to hotels and other public access network resources, the first, hotel of the network cable to the ETH interface to the router, then through the following two methods to router switch to dynamic IP mode.

- 1) hard-switching: the switch router 3G/DHCP pull to the DHCP file.
- 2) Soft Switch: turn on the router interface, click on the "Basic Settings> Internet access mode", select the dynamic IP, and then click "OK" to save the settings.

System Status > Running Status

WAN Status

DHCP	Connected	Release	Refresh
IP address	192.168.0.111		
Subnet Mask	255.255.255.0		
Default Gateway	192.168.0.1		
Primary DNS Server	192.168.0.1		
Secondary DNS Server	221.5.88.88		
DHCP Lease Time	01:59:46		
MAC Address	00:1E:23:04:2D:34		
Online Time	00:00:12		
Current System Time	12/29 2011 Thu 14:02:39		
firmware version	V5.04-2011Nov15215949		

WLAN Status

Mode	802.11b/g/n
SSID	3G ROUTER
Channel	3
MAC Address	00:1E:23:04:2D:35

LAN Status

IP address	192.168.100.1
Subnet Mask	255.255.255.0
DHCP Server	enable
MAC Address	00:1E:23:04:2D:33

Refresh

Wireless Encryption

Selecting “Wireless Settings>Wireless Encryption”, will enable you to configure wireless security for your wireless network to protect your data from intruders. The Router provides three types: WEP, WPA-PSK, WPA2-PSK. The security options are different operation mode, it is recommended to use WPA-PSK security mode.

Wireless Settings > Wireless Encryption

Encryption

Tips: For your wireless network security, we strongly recommend using WPA-PSK or WPA2-PSK encryption.

Security Mode

WPA Encryption

WPA Encryption Algorithm ☐ Auto ☒ TKIP ☐ AESGroup Key Update Period PSK Password (8-bit or 64-bit digits or characters)

Save

Cancel

Federal Communications Commission (FCC) Statement

This device complies with part 15 of the FCC Rules. Operation is subject to the following two conditions: (1) This device may not cause harmful interference, and (2) this device must accept any interference received, including interference that may cause undesired operation.

Note: This equipment has been tested and found to comply with the limits for a Class B digital device, pursuant to part 15 of the FCC Rules. These limits are designed to provide reasonable protection against harmful interference in a residential installation. This equipment generates, uses and can radiate radio frequency energy and, if not installed and used in accordance with the instructions, may cause harmful interference to radio communications. However, there is no guarantee that interference will not occur in a particular installation. If this equipment does cause harmful interference to radio or television reception, which can be determined by turning the equipment off and on, the user is encouraged to try to correct the interference by one or more of the following measures:

- Reorient or relocate the receiving antenna.
- Increase the separation between the equipment and receiver.
- Connect the equipment into an outlet on a circuit different from that to which the receiver is connected.
- Consult the dealer or an experienced radio/TV technician for help.

Warning: Changes or modifications made to this device not expressly approved by **Global Marine Networks, LLC** may void the FCC authorization to operate this device.

Note: The manufacturer is not responsible for any radio or tv interference caused by unauthorized modifications to this equipment. Such modifications could void the user's authority to operate the equipment.

IC Statement:

This device complies with Industry Canada licence-exempt RSS standard(s). Operation is subject to the following two conditions: (1) this device may not cause interference, and (2) this device must accept any interference, including interference that may cause undesired operation of the device.

Le présent appareil est conforme aux CNR d'Industrie Canada applicables aux appareils radio exempts de licence. L'exploitation est autorisée aux deux conditions suivantes : (1) l'appareil ne doit pas produire de brouillage, et (2) l'utilisateur de l'appareil doit accepter tout brouillage radioélectrique subi, même si le brouillage est susceptible d'en compromettre le fonctionnement.

This device should be installed and operated with a minimum distance of 20 cm between the antenna and all persons.