



CMA Testing and Certification Laboratories

廠商會檢定中心 TEST REPORT

Report No. : AR0058421(9) Date : 16 Apr 2014

Application No. : LS003716(6)

Applicant : JY Enterprise Limited
Unit 23B, 6/F, Block A, Wah Lok Industrial Centre, 31-41 Shan Mei Street,
Fotan, Shatin, Hong Kong

Sample Description : Five (5) item of submitted sample stated to be Bluetooth Speaker with / without
Mic of Model No. JY3530, JY3530S
Sample registration No. : RS003518-001
Radio Frequency : 2402MHz ~ 2480MHz Transceiver
Rating : 3.7V rechargeable battery
USB 5V

Date Received : 15 Jan 2014

Test Period : 29 Jan 2014 to 19 Feb 2014

Test Requested : FCC Part 15 Certificate

Test Method : 47 CFR Part 15 (10-1-12 Edition)
ANSI C63.4 – 2009
FCC Public Notice DA 00-705

Test Engineer : Mr. LEUNG Shu-kan, Ken

Test Result : See attached sheet(s) from page 2 to 54.

Conclusion : The submitted sample was found to comply with requirement of FCC Part 15
Subpart B and C.

For and on behalf of
CMA Industrial Development Foundation Limited

Authorized Signature : _____

Mr. WONG Lap-pong, Andrew
Assistant Manager
Electrical Division

Page 1 of 54

FCC ID: 2ABVAJY3530BT



CMA Testing and Certification Laboratories

廠商會檢定中心 **TEST REPORT**

Report No. : AR0058421(9)

Date : 16 Apr 2014

Table of Contents

1	General Information.....	3
1.1	General Description	3
1.2	Location of the test site	5
1.3	List of measuring equipment.....	6
1.4	Measurement Uncertainty	7
2	Description of the radiated emission test	8
2.1	Test Procedure	8
2.2	Test Result	9
2.3	Maximum peak output power	10
2.4	Radiated Emission Measurement Data	11
3	Description of the Line-conducted Test.....	13
3.1	Test Procedure	13
3.2	Test Result	13
3.3	Graph and Table of Conducted Emission Measurement Data	13
4	Photograph	14
4.1	Photographs of the Test Setup for Radiated Emission and Conducted Emission	14
4.2	Photographs of the External and Internal Configurations of the EUT.....	14
5	Supplementary document.....	15
5.1	Bandwidth.....	15
5.2	Duty cycle	16
5.3	Transmission time.....	16
5.4	Power Spectral Density	16
5.5	Hopping sequence	16
5.6	Average on time	17
6	Appendices.....	18

Page 2 of 54

FCC ID: 2ABVAJY3530BT



CMA Testing and Certification Laboratories

廠商會檢定中心 **TEST REPORT**

Report No. : AR0058421(9)

Date : 16 Apr 2014

1 General Information

1.1 General Description

The equipment under test (EUT) is a 2.4GHz Bluetooth speaker. The EUT is power by 3.7V rechargeable battery. It can connect to other wireless device by bluetooth and then play the music. The USB port is only for battery chary charging. It does not have data transfer function and it does not have function when connecting computer.

For the Bluetooth mode, it supports standard Bluetooth V3.0+EDR or below revision protocol for data synchronization. After paring with other standard Bluetooth device, it can play the music.

The Bluetooth module used in the speaker has been test and approved by official Bluetooth Special Interest Group (SIG) member. All technical requirements including hopping rate, Frequency channels, Pseudo randomly order list and Bandwidth has been tested and complied with Spread Spectrum System requirements. The compliance information was listed at Bluetooth SIG with ID code is B020035 for model No WS962xGM.

A non standardized Bluetooth protocol or other Gaussian frequency-shift keying (GFSK) digital modulation signal was unable to synchronize the Bluetooth speaker.

A Bluetooth trademark was printed on the speaker enclosure to indicate it communicate with Bluetooth protocol only.

The USB port is unable to synchronize with personal computer, this port is for 3.7V battery charging only.

Pseudorandom frequency hopping sequence

The channel is represented by a pseudo-random hopping sequence hopping through the 79 RF Channels. The hopping sequence is unique for the piconet and is determined by the Bluetooth device address of the master; the phase in the hopping sequence is determined by the Bluetooth clock of the master. The channel is divided into time slots where each slot corresponds to an RF hop frequency. Consecutive hops correspond to different RF hop frequencies. The nominal hop rate is 1600 hops/s.

Example of a 79 hopping sequence in data mode: 40, 21, 44, 23, 42, 53, 46, 55, 48, 33, 52, 35, 50, 65, 54...

Equal Hopping Frequency Use

All Bluetooth units participating in the piconet are time and hop-synchronized to the channel.

System Receiver Input Bandwidth

Page 3 of 54

FCC ID: 2ABVAJY3530BT



CMA Testing and Certification Laboratories

廠商會檢定中心 TEST REPORT

Report No. : AR0058421(9)

Date : 16 Apr 2014

The input bandwidth of the receiver is 1 MHz. In every connection one Bluetooth device is the master and the other one is slave. The master determines the hopping sequence. The slave follows this sequence. Both devices shift between RX and TX time slot according to the clock of the master. Additionally the type of connection (e.g. single multisport (packet) is set up at the beginning of the connection. The master adapts its hopping frequency and its TX/RX timing according to the packet type of the connection. Also the slave of the connection will use these settings. Repeating of a packet has no influence on the hopping sequence.. The hopping sequence generated by the master of the connection will be followed in any case. That means, a repeated packet will not be send on the same frequency, it is send on the next frequency of the hopping sequence.

Equipment Description

15.247(g): In accordance with the Bluetooth Industry Standard, the system is designed to comply With all of The regulations in Section 15.247 when the transmitter is presented with a continuous data (or information) system.

15.247(h): In accordance with the Bluetooth Industry Standard, the system does not coordinate it channels selection/ hopping sequence with other frequency hopping systems for the express purpose of avoiding the simultaneous occupancy of individual hopping frequencies by multiple transmitters.

The brief circuit description is listed as follows:

- | | |
|---|--|
| - CON1 | and its associated circuit act as charging |
| - J2 | and its associated circuit act as battery |
| - R272, R275, LED7, LED8 | and its associated circuit act as LED display |
| - SW1, R226 | and its associated circuit act as switch |
| - U1, C15, C18, J10 | and its associated circuit act as Bluetooth module |
| - U5, C357, R186, R292, C350, R181, C358, R182, R187, R194, C43, C356, C354, C355 | and its associated circuit act as audio amplifier |

Antenna type : PCB Antenna
Antenna gain : 0dBi
Modulation technique : GFSK
Number of channel : 79 channels



CMA Testing and Certification Laboratories

廠商會檢定中心 **TEST REPORT**

Report No. : AR0058421(9)

Date : 16 Apr 2014

1.2 Location of the test site

FCC Registered Test Site Number: 552221

Radiated emissions measurements are investigated and taken pursuant to the procedures of ANSI C63.4 – 2009. A Semi-Anechoic Chamber Testing Site is set up for investigation and located at:

Ground Floor, Yan Hing Centre,
9 – 13 Wong Chuk Yeung Street,
Fo Tan, Shatin,
New Territories,
Hong Kong.

Conducted emissions measurements are investigated and also taken pursuant to the procedures of ANSI C63.4 – 2009. A shielded room is located at :

Ground Floor, Yan Hing Centre,
9 – 13 Wong Chuk Yeung Street,
Fo Tan, Shatin,
New Territories,
Hong Kong.



CMA Testing and Certification Laboratories

廠商會檢定中心 TEST REPORT

Report No. : AR0058421(9)

Date : 16 Apr 2014

1.3 List of measuring equipment

Equipment	Manufacturer	Model No.	Serial No.	Calibration Due Date	Calibration Period
EMI Test Receiver	R&S	ESCI	100152	08 Jul 2014	1 Year
Spectrum Analyzer	R&S	FSP30	100628	15 Aug 2014	1 Year
Broadband Antenna	Schaffner	CBL6112B	2692	16 Jan 2014	1 Year
Loop Antenna	EMCO	6502	00056620	15 Sep 2014	1 Year
Horn Antenna	Schwarzbeck	BBHA 9120D	9120D-531	09 Oct 2014	1 Year
Horn Antenna	Schwarzbeck	BBHA 9170	BBHA9170442	16 May 2015	2Years
Broadband Pre-Amplifier	Schwarzbeck	BBV 9718	9718-119	09 Oct 2014	1 Year
Broadband Pre-Amplifier	Schwarzbeck	BBV 9719	9719-010	16 May 2015	2Years
LISN	R&S	ESH3-Z5	100038	10 Dec 2014	1 Year
Coaxial Cable	Schaffner	RG 213/U	N/A	28 May 2014	1 Year
Coaxial Cable	Suhner	RG 214/U	N/A	28 May 2014	1 Year
Coaxial Cable	Suhner	Sucoflex_102	N/A	09 Oct 2014	1 Year



CMA Testing and Certification Laboratories

廠商會檢定中心 **TEST REPORT**

Report No. : AR0058421(9)

Date : 16 Apr 2014

1.4 Measurement Uncertainty

The reported uncertainty is based on a standard uncertainty multiplied by a coverage factor $k=2$, providing a level of confidence of approximately 95%.

Radiated emissions

Frequency	Uncertainty (U_{lab})
30MHz ~ 200MHz (Horizontal)	4.63dB
30MHz ~ 200MHz (Vertical)	4.65dB
200MHz ~ 1000MHz (Horizontal)	4.45dB
200MHz ~ 1000MHz (Vertical)	4.41dB

Conducted emissions

Frequency	Uncertainty (U_{lab})
150kHz~30MHz	2.47dB



CMA Testing and Certification Laboratories

廠商會檢定中心 **TEST REPORT**

Report No. : AR0058421(9)

Date : 16 Apr 2014

2 Description of the radiated emission test

2.1 Test Procedure

Radiated emissions measurements are investigated and taken pursuant to the procedures of ANSI C63.4 – 2009 and DA 00-705.

The equipment under test (EUT) was placed on a non-conductive turntable with dimensions of 1.5m x 1m and 0.8m high above the ground. 3m from the EUT, a broadband antenna mounting on the mast received the signal strength. The turntable was rotated to maximize the emission level. The antenna was then moving along the mast from 1m up to 4m until no more higher value was found. Both horizontal and vertical polarization of the antenna were placed and investigated.

For below 30MHz, a loop antenna with its vertical plane is placed 3m from the EUT and rotated about its vertical axis for maximum response at each azimuth about the EUT. And the centre of the loop shall be 1 m above the ground.

For 30MHz to 1GHz, broadband antenna with its vertical and horizontal plane is placed 3m from the EUT and rotated about its vertical and horizontal axis for maximum response at each azimuth about the EUT. And the reference point of antenna shall be 1 m above the ground.

For above 1GHz, horn antenna with its vertical and horizontal plane is placed 3m from the EUT and rotated about its vertical and horizontal axis for maximum response at each azimuth about the EUT. Preamplifier and High Pass filter was used for measurements. The reference point of antenna shall be 1 m above the ground.

The device was rotated through three orthogonal axes to determine which attitude and configuration produce the highest emission during measurement for Radiated Emission measurement.



CMA Testing and Certification Laboratories

廠商會檢定中心 TEST REPORT

Report No. : AR0058421(9)

Date : 16 Apr 2014

2.2 Test Result

Summary

Section in FCC part 15	Description	Result
15.205(a), 15.209, 15.247(d)	Transmitter radiated spurious field strength and other emissions	Page 11-12
15.209	Receiver emissions	Page 13
15.209	Voltage disturbance	Page 14, 31-33
15.247 (a)(1), Part 2.1 and DA-00705	Hopping sequence	Page 34, 35
15.247 (a)(1)	20dB bandwidth and 99% bandwidth	Page 36, 37, 38
15.247 (a)(1)	Channel Spacing (Frequency separation)	Page 39, 40
15.247 (a)(1)(iii)	Number of hopping frequency	Page 41
15.247 (d)	Band Edge	Page 42
15.247 (a)(1)(iii)	Dwell Time (Bluetooth Average On Time)	Page 43-51
15.247 (b)(1)	Maximum Peak output power	Page 10, 52, 53

Subpart C:

Peak Detector and Average Detector data were measured unless otherwise stated.

“#” means emissions appear within the restricted bands shall follow the requirement of section 15.205.

The Frequencies from fundamental up to that tenth harmonics were investigated, and emission more 20dB below limited were not reported. Thu, those higher emissions were presented in next page (section 2.3).

Subpart B:

The emissions meet the requirement of section 15.109 are based on measurements employing the CISPR quasi-peak detector below 1000MHz and average detector for frequencies above 1000MHz.

The frequencies from 30MHz to 1000MHz were investigated, and emissions more 20dB below limit were not reported. Thus, those highest emissions were presented in next page (section 2.3).

It was found that the EUT meet the FCC requirement.



CMA Testing and Certification Laboratories

廠商會檢定中心 **TEST REPORT**

Report No. : AR0058421(9)

Date : 16 Apr 2014

2.3 Maximum peak output power

Conductive measurements

pursuant to

the requirement of FCC Part 15 subpart C

Environmental conditions:

Parameter	Recorded value	
Ambient temperature:	26	° C
Relative humidity:	60	%

Operation Mode: Transmission

Channel	Frequency (MHz)	Reading (dBm)	Reading (mW)	Limit (mW)	Margin (mW)
00	2402.087	- 28.3	0.0015	1000.0	- 999.9985

Channel	Frequency (MHz)	Reading (dBm)	Reading (mW)	Limit (mW)	Margin (mW)
39	2440.841	- 23.8	0.0042	1000.0	- 999.9958

Channel	Frequency (MHz)	Reading (dBm)	Reading (mW)	Limit (mW)	Margin (mW)
78	2480.101	- 27.7	0.0017	1000.0	- 999.9983

The plot saved in TestRpt9.pdf shows the transmission power was less than 1 watt.



CMA Testing and Certification Laboratories

廠商會檢定中心 **TEST REPORT**

Report No. : AR0058421(9)

Date : 16 Apr 2014

2.4 Radiated Emission Measurement Data

Radiated emission

pursuant to

the requirement of FCC Part 15 subpart C

Environmental conditions:

Parameter	Recorded value	
Ambient temperature:	21	° C
Relative humidity:	66	%

Detector: Peak RBW: 1MHz VBW: 3MHz

Testing frequency range: 9kHz to 25GHz

Channel	Frequency (MHz)	Polarity (H/V)	Reading at 3m (dBμV)	Transducer Factor (dB/m)	Field Strength at 3m (dBμV/m)	Limit at 3m (dBμV/m)	Margin (dB)
00	2401.840	V	47.6	31.6	79.1	114.0	- 34.9
	#4804.078	H	49.3	2.0	51.3	74.0	- 22.7
	7206.121	V	36.5	10.2	46.7	74.0	- 27.3
	9608.073	H	38.9	12.9	51.8	74.0	- 22.2

39	2441.144	H	47.5	31.6	79.0	114.0	- 35.0
	#4881.985	V	50.3	2.0	52.3	74.0	- 21.7
	#7322.877	V	38.3	10.2	48.5	74.0	- 25.5
	9763.924	V	35.7	12.9	48.6	74.0	- 25.4

78	2479.905	H	57.7	31.6	89.2	114.0	- 24.8
	#4959.999	H	42.5	2.0	44.5	74.0	- 29.5
	#7439.820	V	34.2	10.2	44.4	74.0	- 29.6
	9920.015	V	35.7	12.9	48.6	74.0	- 25.4

Remark: Peak measurement values are lower than average limit, therefore average measurement is not necessary

Other emissions more than 20dB below the limit are not reported.

Page 11 of 54

FCC ID: 2ABVAJY3530BT



CMA Testing and Certification Laboratories

廠商會檢定中心 **TEST REPORT**

Report No. : AR0058421(9)

Date : 16 Apr 2014

2.4 Radiated Emission Measurement Data (Con't)

Radiated emission

pursuant to

the requirement of FCC Part 15 subpart B

Environmental conditions:

Parameter	Recorded value	
Ambient temperature:	21	° C
Relative humidity:	66	%

Detector: Quasi-peak

RBW: 120kHz VBW: 300kHz

Operation Mode: Receiver mode

Testing frequency range: 9kHz to 25GHz

Frequency (MHz)	Polarity (H/V)	Reading at 3m (dBμV)	Antenna Factor and Cable Loss (dB/m)	Field Strength at 3m (dBμV/m)	Limit at 3m (dBμV/m)	Margin (dB)
48.946	H	9.5	12.8	22.3	40.0	- 17.7
85.707	H	9.4	8.5	17.9	40.0	- 22.1
122.245	H	8.5	14.4	22.9	43.5	- 20.6
142.073	H	8.3	14.1	22.4	43.5	- 21.1
177.686	H	7.9	11.9	19.8	43.5	- 23.7
202.183	H	8.6	12.0	20.6	43.5	- 22.9
234.305	H	8.6	13.2	21.8	46.0	- 24.2

Remark: Other emissions more than 20dB below the limit are not reported.



CMA Testing and Certification Laboratories

廠商會檢定中心 **TEST REPORT**

Report No. : AR0058421(9)

Date : 16 Apr 2014

3 Description of the Line-conducted Test

3.1 Test Procedure

Conducted emissions measurements are investigated and also taken pursuant to the procedures of ANSI C63.4 – 2009. The EUT was setup as described in the procedures, and both lines were measured.

3.2 Test Result

The EUT is connected to adaptor .

It was found that the EUT met the FCC requirement.

3.3 Graph and Table of Conducted Emission Measurement Data

For electronic filling, the document is saved with filename TestRpt2.pdf.



CMA Testing and Certification Laboratories

廠商會檢定中心 **TEST REPORT**

Report No. : AR0058421(9)

Date : 16 Apr 2014

4 Photograph

4.1 Photographs of the Test Setup for Radiated Emission and Conducted Emission

For electronic filing, the photos are saved with filename TSup1.jpg to TSup9.jpg.

4.2 Photographs of the External and Internal Configurations of the EUT

For electronic filing, the photos are saved with filename ExPho1.jpg to ExPho3.jpg and InPho1.jpg to InPho5.jpg.



CMA Testing and Certification Laboratories

廠商會檢定中心 TEST REPORT

Report No. : AR0058421(9)

Date : 16 Apr 2014

5 Supplementary document

The following document were submitted by applicant, and for electronic filing, the document are saved with the following filenames:

Document	Filename
ID Label/Location	LabelSmp.jpg
Block Diagram	BlkDia.pdf
Schematic Diagram	Schem.pdf
Users Manual	UserMan.pdf
Operational Description	OpDes.pdf

5.1 Bandwidth

Bluetooth:

The plot saved in TestRpt4.pdf shows the 20dB bandwidth and 99% bandwidth:

Frequency Channel (MHz)	20dB bandwidth (kHz)	99% bandwidth (kHz)
2402	1114.3	998.5
2441	1128.8	1005.7
2480	1114.3	1005.7

The plot saved in TestRpt5.pdf shows the channel spacing has minimum 25 kHz or two-third of 20dB bandwidth of hopping channel.

Frequency (MHz)	Channel spacing (kHz)	Two-third of 20dB bandwidth (kHz)	Minimum bandwidth (kHz)
2402	1005.8	665.7	25
2441	1005.8	670.5	25
2480	1013.0	670.5	25

The plot saved in TestRpt6.pdf shows the frequency hopping channel over 75 hopping frequency.

The plot saved in TestRpt7.pdf shows the fundamental emission is confined in the specified band. It shows the 20dB bandwidth and band edge meet the 15.247(d) and 15.205 requirement.



CMA Testing and Certification Laboratories

廠商會檢定中心 **TEST REPORT**

Report No. : AR0058421(9)

Date : 16 Apr 2014

5.2 Duty cycle

Not Applicable

5.3 Transmission time

Not Applicable

5.4 Power Spectral Density

Not Applicable

5.5 Hopping sequence

The plot saved in TestRpt3.pdf shows the hopping sequence is pseudorandom randomly distributed.
Four example of continuous fundamental frequency hopping pattern was as below:

The 1st example of fundamental frequency = 2.414210GHz

The 2nd example of fundamental frequency = 2.475770GHz

The 3rd example of fundamental frequency = 2.433200GHz

The 4th example of fundamental frequency = 2.456790GHz

Result:

Fc 1 – Fc 2 = -61.56MHz

Fc 2 – Fc 3 = +42.57MHz

Fc 3 – Fc 4 = -23.59MHz

It was found the hopping pattern is pseudorandom random.



CMA Testing and Certification Laboratories

廠商會檢定中心 **TEST REPORT**

Report No. : AR0058421(9)

Date : 16 Apr 2014

5.6 Average on time

The plot saved in TestRpt8.pdf shows the average on time for frequency hopping channel is within 0.4 seconds.

The calculation for average on time as below:

Average hopping channel = Number of transmitted carrier / Sweep time

Average on time = Packet on time x Average hopping channel

Dwell time = Average on time x Total frequency hopping channel x 0.4

Test result:

Frequency Channel (MHz)	Packet	Dwell Time (Seconds)	Limit (Seconds)	Margin (Seconds)
2402	DH1	0.128	0.4	- 0.272
2402	DH3	0.121	0.4	- 0.279
2402	DH5	0.121	0.4	- 0.279
2441	DH1	0.247	0.4	- 0.153
2441	DH3	0.299	0.4	- 0.101
2441	DH5	0.289	0.4	- 0.111
2480	DH1	0.346	0.4	- 0.054
2450	DH3	0.350	0.4	- 0.050
2480	DH5	0.273	0.4	- 0.127



CMA Testing and Certification Laboratories

廠商會檢定中心 **TEST REPORT**

Report No. : AR0058421(9)

Date : 16 Apr 2014

6 Appendices

A1	Photos of the set-up of Radiated Emissions	3	pages
A2	Photos of the set-up of Conducted Emissions	2	pages
A3	Photos of External Configurations	2	pages
A4	Photos of Internal Configurations	3	pages
A5	ID Label/Location	2	pages
A6	Conducted Emission Measurement Data	3	pages
A7	Hopping sequence	2	pages
A8	20 dB bandwidth and 99% bandwidth	3	pages
A9	Bluetooth Channel Spacing	2	pages
A10	Bluetooth Hopping Channel	1	page
A11	Bluetooth Band Edge	2	page
A12	Bluetooth Average on time	9	pages
A13	Transmission Power	2	pages



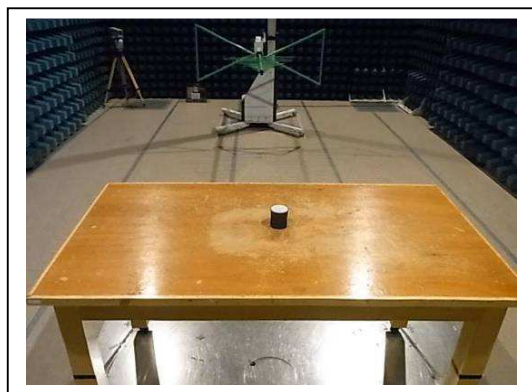
CMA Testing and Certification Laboratories

廠商會檢定中心 **TEST REPORT**

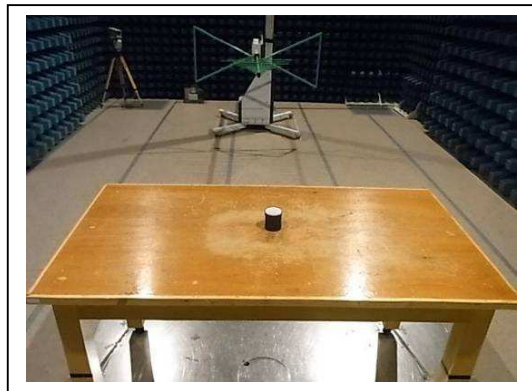
Report No. : AR0058421(9)

Date : 16 Apr 2014

A1. Photos of the set-up of Radiated Emissions



(Front view, 30MHz – 1GHz)



(Back view, 30MHz – 1GHz)

Tested by:

Mr. LEUNG Shu-kan, Ken

Reviewed by:

Mr. WONG Lap-pong, Andrew

Page 19 of 54

FCC ID: 2ABVAJY3530BT

This document is issued subject to the latest CMA Testing General Terms and Conditions of Testing and Inspection Services, available on request or accessible at website www.cmatcl.com.
This document shall not be reproduced except in full or with written approval by CMA Testing.

CMA Industrial Development Foundation Limited

Room 1302, Yan Hing Centre, 9-13 Wong Chuk Yeung St., Fo Tan, Shatin, N.T., Hong Kong.

Tel: (852) 2698 8198 Fax: (852) 2695 4177 E-mail: info@cmatcl.com Web Site: <http://www.cmatcl.com>



CMA Testing and Certification Laboratories

廠商會檢定中心 **TEST REPORT**

Report No. : AR0058421(9)

Date : 16 Apr 2014



(Front view, 9KHz – 30MHz)



(Back view, 9KHz – 30MHz)

Tested by:

Mr. LEUNG Shu-kan, Ken

Reviewed by:

Mr. WONG Lap-pong, Andrew

Page 20 of 54

FCC ID: 2ABVAJY3530BT

This document is issued subject to the latest CMA Testing General Terms and Conditions of Testing and Inspection Services, available on request or accessible at website www.cmatcl.com.
This document shall not be reproduced except in full or with written approval by CMA Testing.

CMA Industrial Development Foundation Limited

Room 1302, Yan Hing Centre, 9-13 Wong Chuk Yeung St., Fo Tan, Shatin, N.T., Hong Kong.

Tel: (852) 2698 8198 Fax: (852) 2695 4177 E-mail: info@cmatcl.com Web Site: <http://www.cmatcl.com>

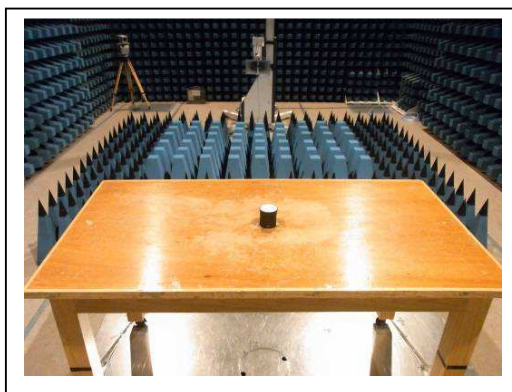


CMA Testing and Certification Laboratories

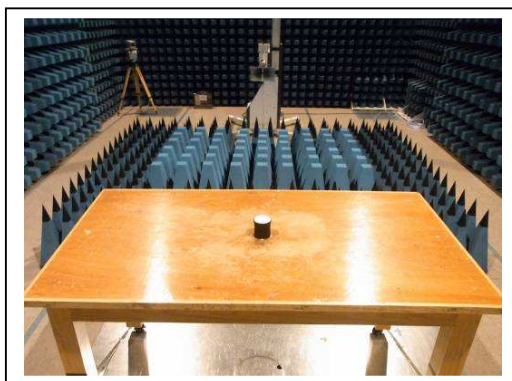
廠商會檢定中心 **TEST REPORT**

Report No. : AR0058421(9)

Date : 16 Apr 2014



(front view, 1GHz – 25GHz)



(rear view, 1GHz – 25GHz)

Tested by:

Mr. LEUNG Shu-kan, Ken

Reviewed by:

Mr. WONG Lap-pong, Andrew

Page 21 of 54

FCC ID: 2ABVAJY3530BT

This document is issued subject to the latest CMA Testing General Terms and Conditions of Testing and Inspection Services, available on request or accessible at website www.cmatcl.com.
This document shall not be reproduced except in full or with written approval by CMA Testing.

CMA Industrial Development Foundation Limited

Room 1302, Yan Hing Centre, 9-13 Wong Chuk Yeung St., Fo Tan, Shatin, N.T., Hong Kong.

Tel: (852) 2698 8198 Fax: (852) 2695 4177 E-mail: info@cmatcl.com Web Site: <http://www.cmatcl.com>



CMA Testing and Certification Laboratories

廠商會檢定中心 **TEST REPORT**

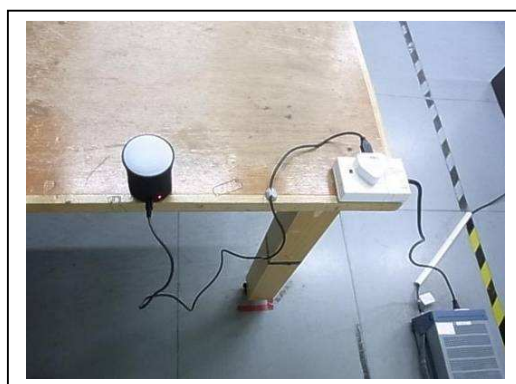
Report No. : AR0058421(9)

Date : 16 Apr 2014

A2 Photos of the set-up of Conducted Emission



(front view)



(rear view)

Tested by:

Mr. LEUNG Shu-kan, Ken

Reviewed by:

Mr. WONG Lap-pong, Andrew

Page 22 of 54

FCC ID: 2ABVAJY3530BT

This document is issued subject to the latest CMA Testing General Terms and Conditions of Testing and Inspection Services, available on request or accessible at website www.cmatcl.com.
This document shall not be reproduced except in full or with written approval by CMA Testing.

CMA Industrial Development Foundation Limited

Room 1302, Yan Hing Centre, 9-13 Wong Chuk Yeung St., Fo Tan, Shatin, N.T., Hong Kong.

Tel: (852) 2698 8198 Fax: (852) 2695 4177 E-mail: info@cmatcl.com Web Site: <http://www.cmatcl.com>



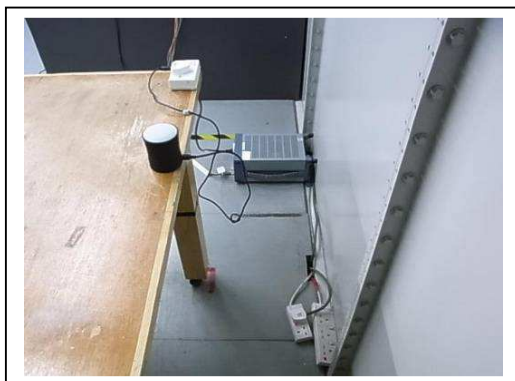
CMA Testing and Certification Laboratories

廠商會檢定中心 **TEST REPORT**

Report No. : AR0058421(9)

Date : 16 Apr 2014

Photos of the set-up of Conducted Emission



(side view)

Tested by:

Mr. LEUNG Shu-kan, Ken

Reviewed by:

Mr. WONG Lap-pong, Andrew

Page 23 of 54

FCC ID: 2ABVAJY3530BT

This document is issued subject to the latest CMA Testing General Terms and Conditions of Testing and Inspection Services, available on request or accessible at website www.cmatcl.com.
This document shall not be reproduced except in full or with written approval by CMA Testing.

CMA Industrial Development Foundation Limited

Room 1302, Yan Hing Centre, 9-13 Wong Chuk Yeung St., Fo Tan, Shatin, N.T., Hong Kong.

Tel: (852) 2698 8198 Fax: (852) 2695 4177 E-mail: info@cmatcl.com Web Site: <http://www.cmatcl.com>



CMA Testing and Certification Laboratories

廠商會檢定中心 **TEST REPORT**

Report No. : AR0058421(9)

Date : 16 Apr 2014

A3. Photos of External Configurations



External Configuration 1



External Configuration 2

Tested by:

Mr. LEUNG Shu-kan, Ken

Reviewed by:

Mr. WONG Lap-pong, Andrew

Page 24 of 54

FCC ID: 2ABVAJY3530BT

This document is issued subject to the latest CMA Testing General Terms and Conditions of Testing and Inspection Services, available on request or accessible at website www.cmatcl.com.
This document shall not be reproduced except in full or with written approval by CMA Testing.

CMA Industrial Development Foundation Limited

Room 1302, Yan Hing Centre, 9-13 Wong Chuk Yeung St., Fo Tan, Shatin, N.T., Hong Kong.

Tel: (852) 2698 8198 Fax: (852) 2695 4177 E-mail: info@cmatcl.com Web Site: <http://www.cmatcl.com>



CMA Testing and Certification Laboratories

廠商會檢定中心 **TEST REPORT**

Report No. : AR0058421(9)

Date : 16 Apr 2014

A3. Photos of External Configurations



External Configuration 3

Tested by:

Mr. LEUNG Shu-kan, Ken

Reviewed by:

Mr. WONG Lap-pong, Andrew

Page 25 of 54

FCC ID: 2ABVAJY3530BT

This document is issued subject to the latest CMA Testing General Terms and Conditions of Testing and Inspection Services, available on request or accessible at website www.cmatcl.com.
This document shall not be reproduced except in full or with written approval by CMA Testing.

CMA Industrial Development Foundation Limited

Room 1302, Yan Hing Centre, 9-13 Wong Chuk Yeung St., Fo Tan, Shatin, N.T., Hong Kong.

Tel: (852) 2698 8198 Fax: (852) 2695 4177 E-mail: info@cmatcl.com Web Site: <http://www.cmatcl.com>



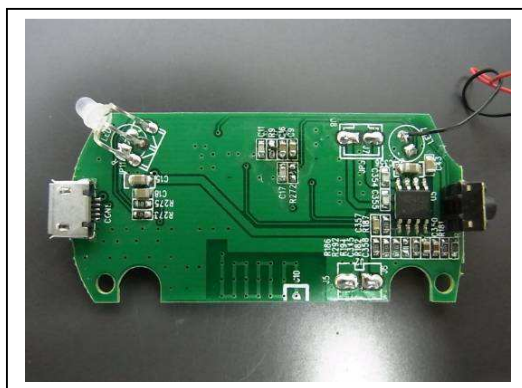
CMA Testing and Certification Laboratories

廠商會檢定中心 **TEST REPORT**

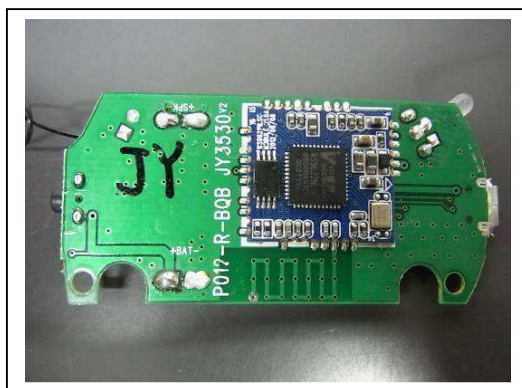
Report No. : AR0058421(9)

Date : 16 Apr 2014

A4. Photos of Internal Configurations



Internal Configuration 1



Internal Configuration 2

Tested by:

Mr. LEUNG Shu-kan, Ken

Reviewed by:

Mr. WONG Lap-pong, Andrew

Page 26 of 54

FCC ID: 2ABVAJY3530BT

This document is issued subject to the latest CMA Testing General Terms and Conditions of Testing and Inspection Services, available on request or accessible at website www.cmatcl.com.
This document shall not be reproduced except in full or with written approval by CMA Testing.

CMA Industrial Development Foundation Limited

Room 1302, Yan Hing Centre, 9-13 Wong Chuk Yeung St., Fo Tan, Shatin, N.T., Hong Kong.

Tel: (852) 2698 8198 Fax: (852) 2695 4177 E-mail: info@cmatcl.com Web Site: <http://www.cmatcl.com>



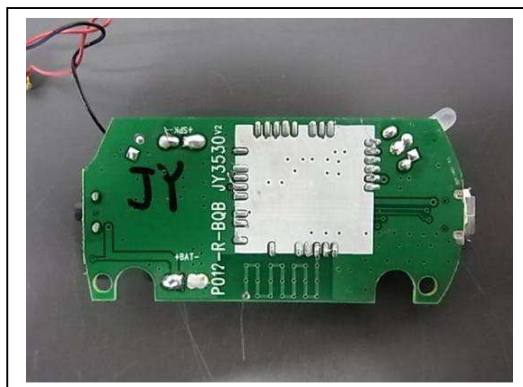
CMA Testing and Certification Laboratories

廠商會檢定中心 **TEST REPORT**

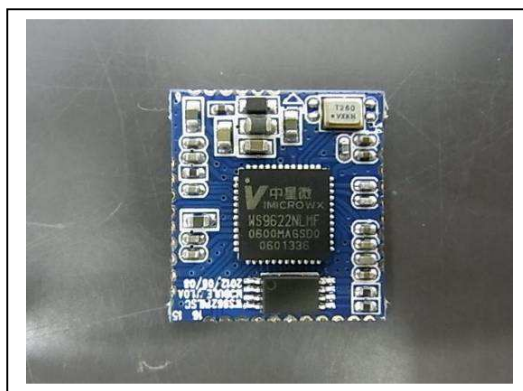
Report No. : AR0058421(9)

Date : 16 Apr 2014

A4. Photos of Internal Configurations



Internal Configuration 3



Internal Configuration 4

Tested by:

Mr. LEUNG Shu-kan, Ken

Reviewed by:

Mr. WONG Lap-pong, Andrew

Page 27 of 54

FCC ID: 2ABVAJY3530BT

This document is issued subject to the latest CMA Testing General Terms and Conditions of Testing and Inspection Services, available on request or accessible at website www.cmatcl.com.
This document shall not be reproduced except in full or with written approval by CMA Testing.

CMA Industrial Development Foundation Limited

Room 1302, Yan Hing Centre, 9-13 Wong Chuk Yeung St., Fo Tan, Shatin, N.T., Hong Kong.

Tel: (852) 2698 8198 Fax: (852) 2695 4177 E-mail: info@cmatcl.com Web Site: <http://www.cmatcl.com>



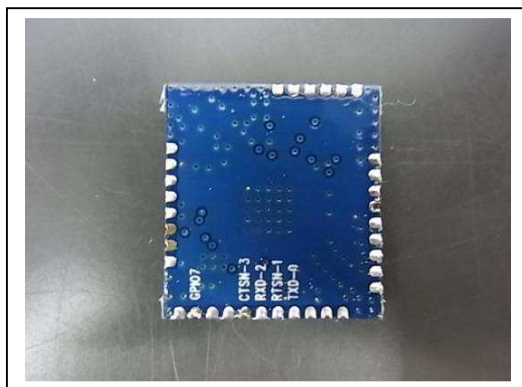
CMA Testing and Certification Laboratories

廠商會檢定中心 **TEST REPORT**

Report No. : AR0058421(9)

Date : 16 Apr 2014

A4. Photos of Internal Configurations



Internal Configuration 5

Tested by:

Mr. LEUNG Shu-kan, Ken

Reviewed by:

Mr. WONG Lap-pong, Andrew

Page 28 of 54

FCC ID: 2ABVAJY3530BT

This document is issued subject to the latest CMA Testing General Terms and Conditions of Testing and Inspection Services, available on request or accessible at website www.cmatcl.com.
This document shall not be reproduced except in full or with written approval by CMA Testing.

CMA Industrial Development Foundation Limited

Room 1302, Yan Hing Centre, 9-13 Wong Chuk Yeung St., Fo Tan, Shatin, N.T., Hong Kong.

Tel: (852) 2698 8198 Fax: (852) 2695 4177 E-mail: info@cmatcl.com Web Site: <http://www.cmatcl.com>



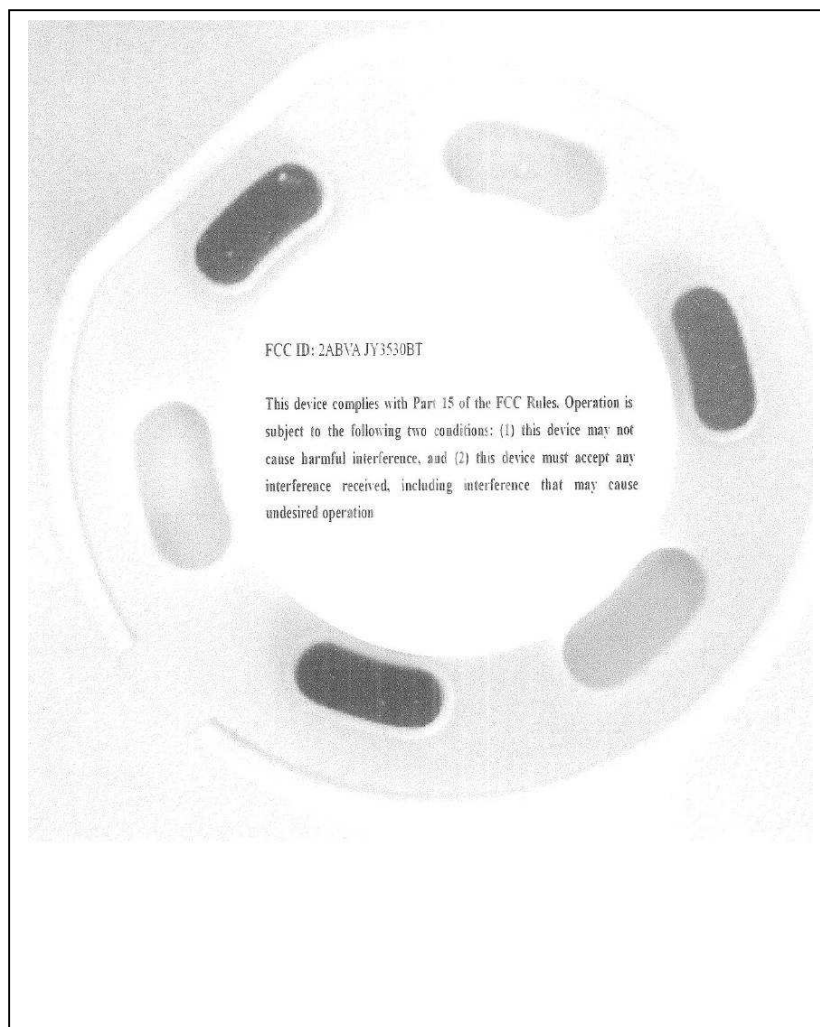
CMA Testing and Certification Laboratories

廠商會檢定中心 **TEST REPORT**

Report No. : AR0058421(9)

Date : 16 Apr 2014

A5. ID Label / Location



Label 1

Tested by:

Mr. LEUNG Shu-kan, Ken

Reviewed by:

Mr. WONG Lap-pong, Andrew

Page 29 of 54

FCC ID: 2ABVAJY3530BT

This document is issued subject to the latest CMA Testing General Terms and Conditions of Testing and Inspection Services, available on request or accessible at website www.cmatcl.com.
This document shall not be reproduced except in full or with written approval by CMA Testing.

CMA Industrial Development Foundation Limited

Room 1302, Yan Hing Centre, 9-13 Wong Chuk Yeung St., Fo Tan, Shatin, N.T., Hong Kong.

Tel: (852) 2698 8198 Fax: (852) 2695 4177 E-mail: info@cmatcl.com Web Site: <http://www.cmatcl.com>



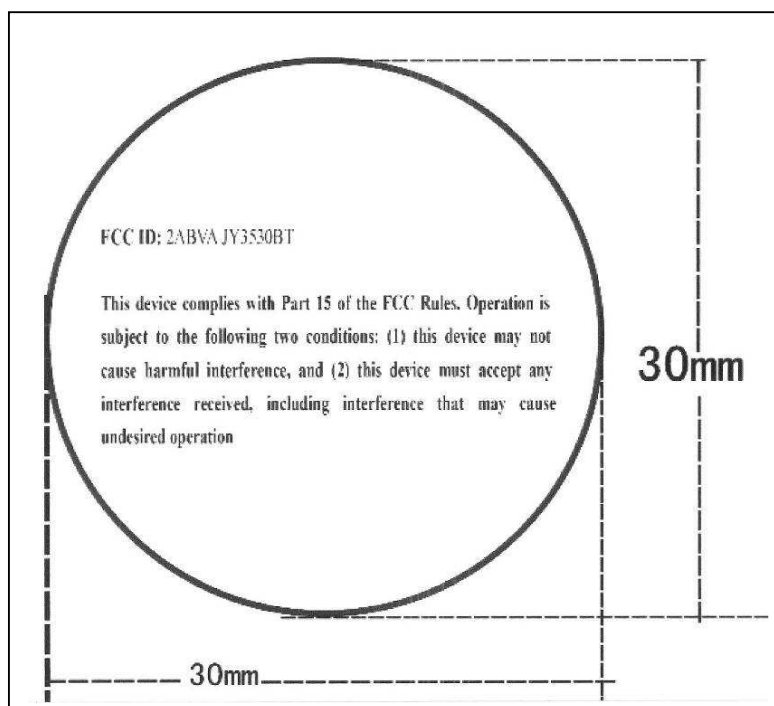
CMA Testing and Certification Laboratories

廠商會檢定中心 TEST REPORT

Report No. : AR0058421(9)

Date : 16 Apr 2014

A5. ID Label / Location



Label 2

Tested by:

Mr. LEUNG Shu-kan, Ken

Reviewed by:

Mr. WONG Lap-pong, Andrew

FCC ID: 2ABVAJY3530BT

This document is issued subject to the latest CMA Testing General Terms and Conditions of Testing and Inspection Services, available on request or accessible at website www.cmatcl.com.
This document shall not be reproduced except in full or with written approval by CMA Testing.

CMA Industrial Development Foundation Limited

Room 1302, Yan Hing Centre, 9-13 Wong Chuk Yeung St., Fo Tan, Shatin, N.T., Hong Kong.

Tel: (852) 2698 8198 Fax: (852) 2695 4177 E-mail: info@cmatcl.com Web Site: <http://www.cmatcl.com>



CMA Testing and Certification Laboratories

廠商會檢定中心 **TEST REPORT**

Report No. : AR0058421(9)

Date : 16 Apr 2014

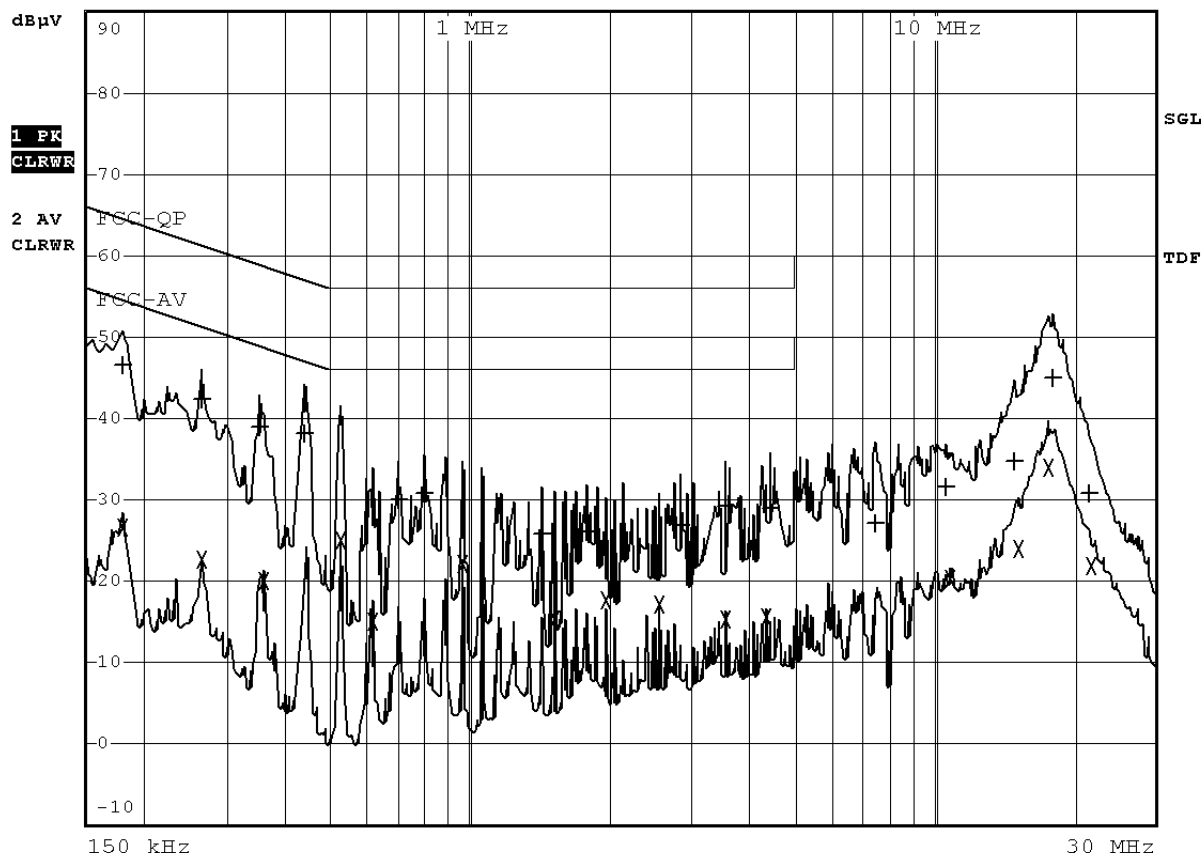
A6 Conducted Emission Measurement Date



RBW 9 kHz

MT 1 s

Att 10 dB AUTO PREAMP OFF



Tested by:

Mr. LEUNG Shu-kan, Ken

Reviewed by:

Mr. WONG Lap-pong, Andrew

Page 31 of 54

FCC ID: 2ABVAJY3530BT

This document is issued subject to the latest CMA Testing General Terms and Conditions of Testing and Inspection Services, available on request or accessible at website www.cmatcl.com.
This document shall not be reproduced except in full or with written approval by CMA Testing.

CMA Industrial Development Foundation Limited

Room 1302, Yan Hing Centre, 9-13 Wong Chuk Yeung St., Fo Tan, Shatin, N.T., Hong Kong.

Tel: (852) 2698 8198 Fax: (852) 2695 4177 E-mail: info@cmatcl.com Web Site: <http://www.cmatcl.com>



CMA Testing and Certification Laboratories

廠商會檢定中心 **TEST REPORT**

Report No. : AR0058421(9)

Date : 16 Apr 2014

A6 Conducted Emission Measurement Date

EDIT PEAK LIST (Final Measurement Results)				
Trace1:	FCC-QP			
Trace2:	FCC-AV			
Trace3:	---			
TRACE	FREQUENCY	LEVEL dBμV		DELTA LIMIT dB
1 Quasi Peak	180 kHz	46.55	L1 gnd	-17.93
2 Average	180 kHz	26.48	N gnd	-27.99
1 Quasi Peak	265 kHz	42.25	L1 gnd	-19.02
2 Average	265 kHz	22.73	L1 gnd	-28.53
1 Quasi Peak	355 kHz	38.90	L1 gnd	-19.93
2 Average	360 kHz	20.03	N gnd	-28.69
1 Quasi Peak	440 kHz	38.16	L1 gnd	-18.89
2 Average	530 kHz	25.06	N gnd	-20.93
2 Average	625 kHz	14.99	N gnd	-31.00
1 Quasi Peak	710 kHz	30.07	L1 gnd	-25.92
1 Quasi Peak	800 kHz	30.74	N gnd	-25.25
2 Average	975 kHz	22.16	N gnd	-23.83
1 Quasi Peak	1.42 MHz	25.81	N gnd	-30.18
2 Average	1.51 MHz	15.32	N gnd	-30.67
1 Quasi Peak	1.78 MHz	26.03	L1 gnd	-29.96
2 Average	1.95 MHz	17.56	N gnd	-28.43
2 Average	2.57 MHz	17.21	N gnd	-28.78
1 Quasi Peak	2.84 MHz	26.77	N gnd	-29.22
1 Quasi Peak	3.55 MHz	29.13	N gnd	-26.87
2 Average	3.55 MHz	15.29	L1 gnd	-30.70

Tested by:

Mr. LEUNG Shu-kan, Ken

Reviewed by:

Mr. WONG Lap-pong, Andrew

Page 32 of 54

FCC ID: 2ABVAJY3530BT

This document is issued subject to the latest CMA Testing General Terms and Conditions of Testing and Inspection Services, available on request or accessible at website www.cmatcl.com.
This document shall not be reproduced except in full or with written approval by CMA Testing.

CMA Industrial Development Foundation Limited

Room 1302, Yan Hing Centre, 9-13 Wong Chuk Yeung St., Fo Tan, Shatin, N.T., Hong Kong.

Tel: (852) 2698 8198 Fax: (852) 2695 4177 E-mail: info@cmatcl.com Web Site: <http://www.cmatcl.com>



CMA Testing and Certification Laboratories

廠商會檢定中心 **TEST REPORT**

Report No. : AR0058421(9)

Date : 16 Apr 2014

A6 Conducted Emission Measurement Date

EDIT PEAK LIST (Final Measurement Results)				
Trace1:	FCC-QP			
Trace2:	FCC-AV			
Trace3:	---			
TRACE	FREQUENCY	LEVEL dBμV	DELTA LIMIT dB	
2 Average	4.35 MHz	15.55 N gnd	-30.44	
1 Quasi Peak	4.44 MHz	28.86 L1 gnd	-27.13	
1 Quasi Peak	7.46 MHz	27.12 N gnd	-32.87	
1 Quasi Peak	10.65 MHz	31.60 L1 gnd	-28.40	
2 Average	10.83 MHz	20.35 N gnd	-29.64	
1 Quasi Peak	14.92 MHz	34.79 N gnd	-25.20	
2 Average	15.19 MHz	23.85 L1 gnd	-26.14	
2 Average	17.67 MHz	34.05 N gnd	-15.95	
1 Quasi Peak	18.11 MHz	45.09 L1 gnd	-14.90	
1 Quasi Peak	21.58 MHz	30.71 L1 gnd	-29.28	
2 Average	21.75 MHz	21.96 L1 gnd	-28.03	

Tested by:

Mr. LEUNG Shu-kan, Ken

Reviewed by:

Mr. WONG Lap-pong, Andrew

Page 33 of 54

FCC ID: 2ABVAJY3530BT

This document is issued subject to the latest CMA Testing General Terms and Conditions of Testing and Inspection Services, available on request or accessible at website www.cmatcl.com.
This document shall not be reproduced except in full or with written approval by CMA Testing.

CMA Industrial Development Foundation Limited

Room 1302, Yan Hing Centre, 9-13 Wong Chuk Yeung St., Fo Tan, Shatin, N.T., Hong Kong.

Tel: (852) 2698 8198 Fax: (852) 2695 4177 E-mail: info@cmatcl.com Web Site: <http://www.cmatcl.com>



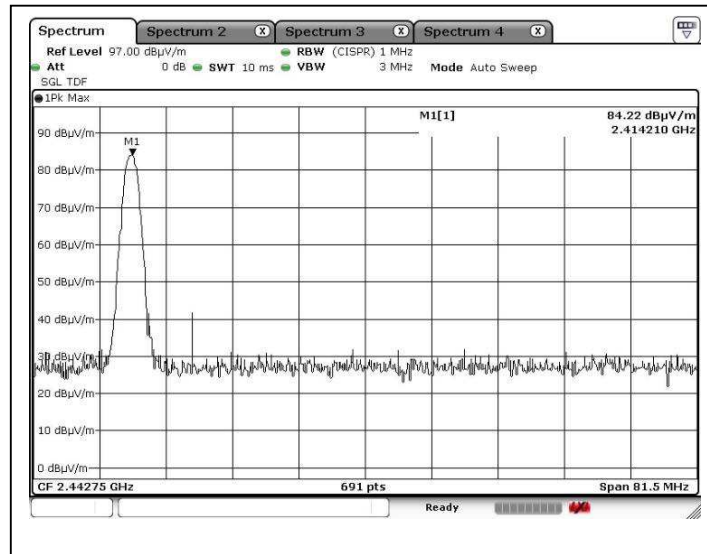
CMA Testing and Certification Laboratories

廠商會檢定中心 TEST REPORT

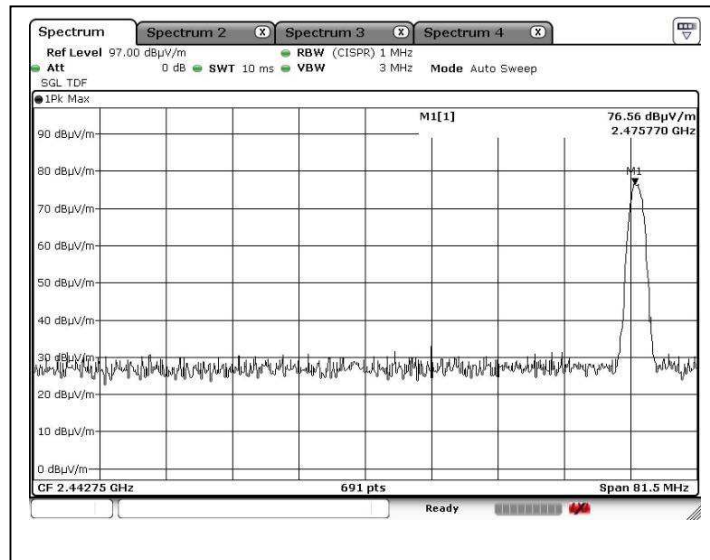
Report No. : AR0058421(9)

Date : 16 Apr 2014

A7. Hopping sequence



1st example of fundamental frequency



2nd example of fundamental frequency

Tested by:

Mr. LEUNG Shu-kan, Ken

Reviewed by:

Mr. WONG Lap-pong, Andrew





CMA Testing and Certification Laboratories

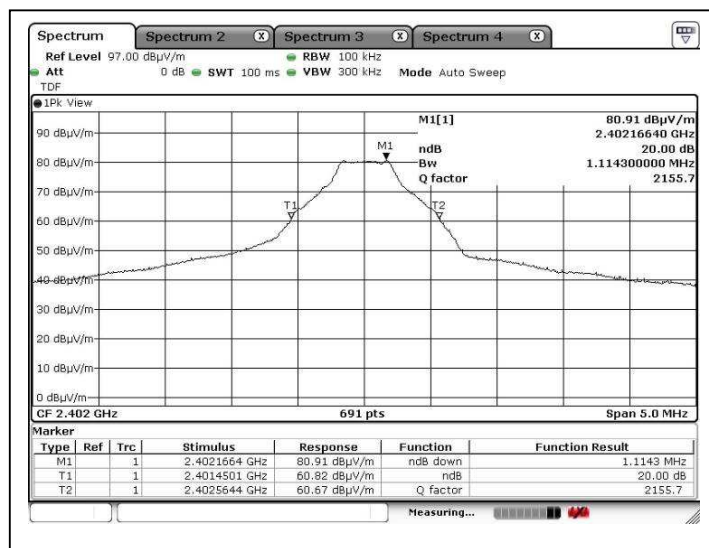
廠商會檢定中心 TEST REPORT

Report No. : AR0058421(9)

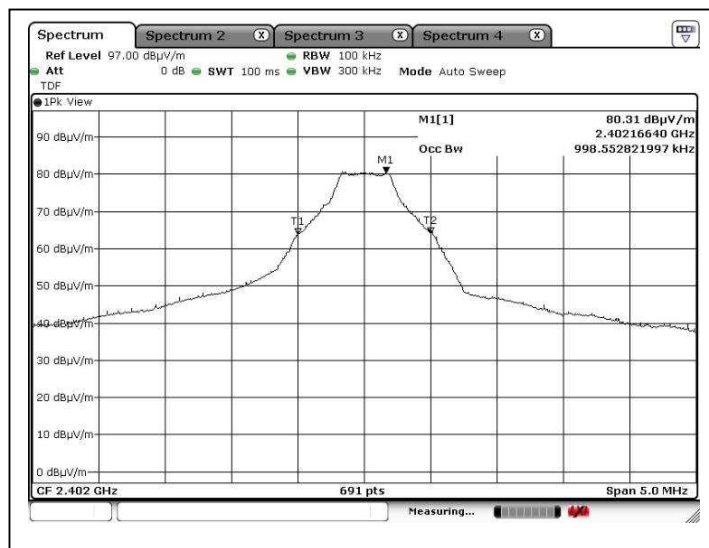
Date : 16 Apr 2014

A8. 20 dB bandwidth and 99% bandwidth

Channel: CH00



20 dB bandwidth



99% bandwidth

Tested by:

Ken

Mr. LEUNG Shu-kan, Ken

Reviewed by:

PR

Mr. WONG Lap-pong, Andrew



CMA Testing and Certification Laboratories

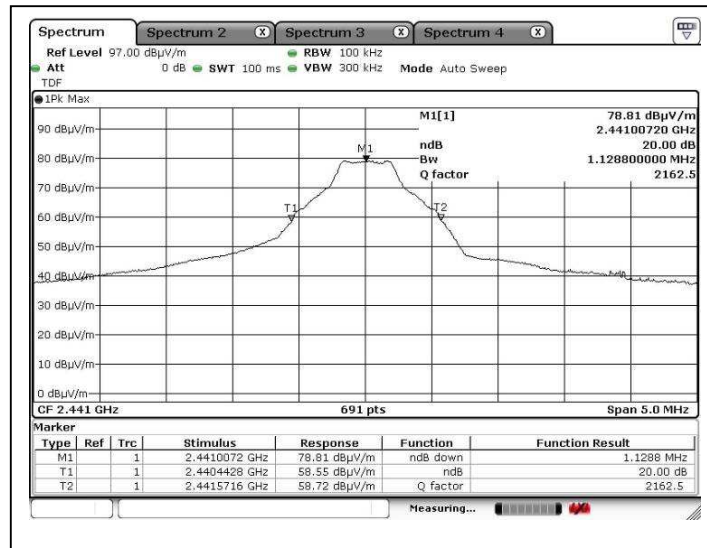
廠商會檢定中心 TEST REPORT

Report No. : AR0058421(9)

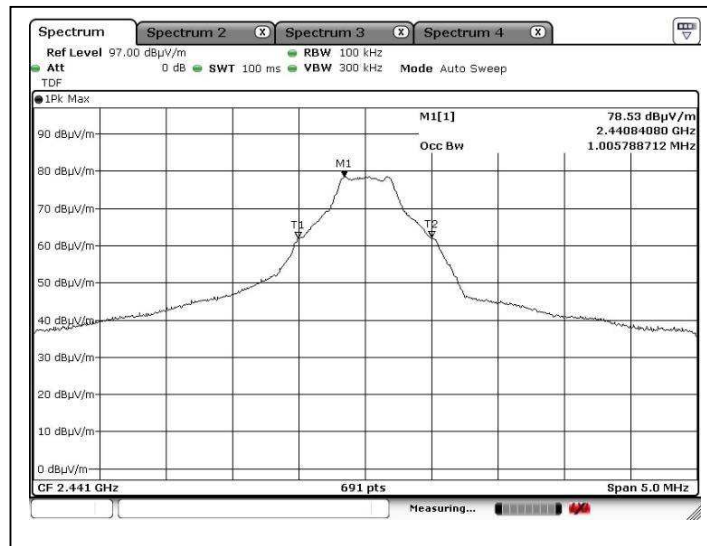
Date : 16 Apr 2014

A8. 20 dB bandwidth and 99% bandwidth

Channel: CH39



20 dB bandwidth



99% bandwidth

Tested by:

Mr. LEUNG Shu-kan, Ken

Reviewed by:

Mr. WONG Lap-pong, Andrew



CMA Testing and Certification Laboratories

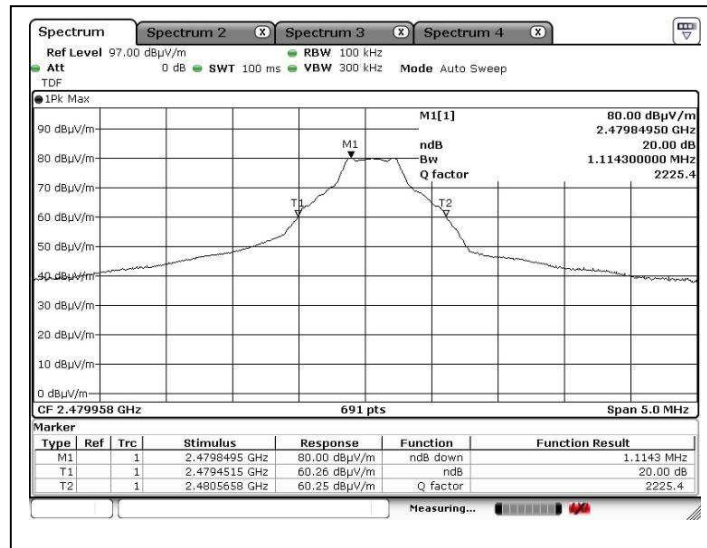
廠商會檢定中心 TEST REPORT

Report No. : AR0058421(9)

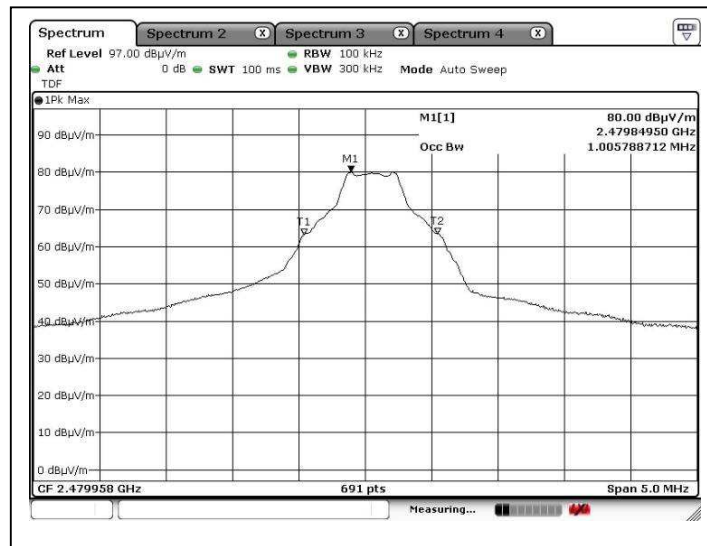
Date : 16 Apr 2014

A8. 20 dB bandwidth and 99% bandwidth

Channel: CH78



20 dB bandwidth



99% bandwidth

Tested by:
Mr. LEUNG Shu-kan, Ken

Reviewed by:
Mr. WONG Lap-pong, Andrew

Page 38 of 54

FCC ID: 2ABVAJY3530BT

This document is issued subject to the latest CMA Testing General Terms and Conditions of Testing and Inspection Services, available on request or accessible at website www.cmatcl.com.
This document shall not be reproduced except in full or with written approval by CMA Testing.

CMA Industrial Development Foundation Limited

Room 1302, Yan Hing Centre, 9-13 Wong Chuk Yeung St., Fo Tan, Shatin, N.T., Hong Kong.

Tel: (852) 2698 8198 Fax: (852) 2695 4177 E-mail: info@cmatcl.com Web Site: <http://www.cmatcl.com>



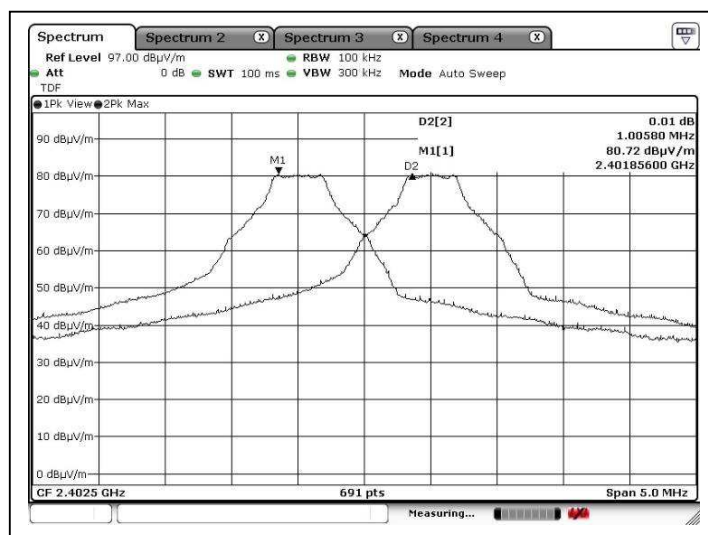
CMA Testing and Certification Laboratories

廠商會檢定中心 TEST REPORT

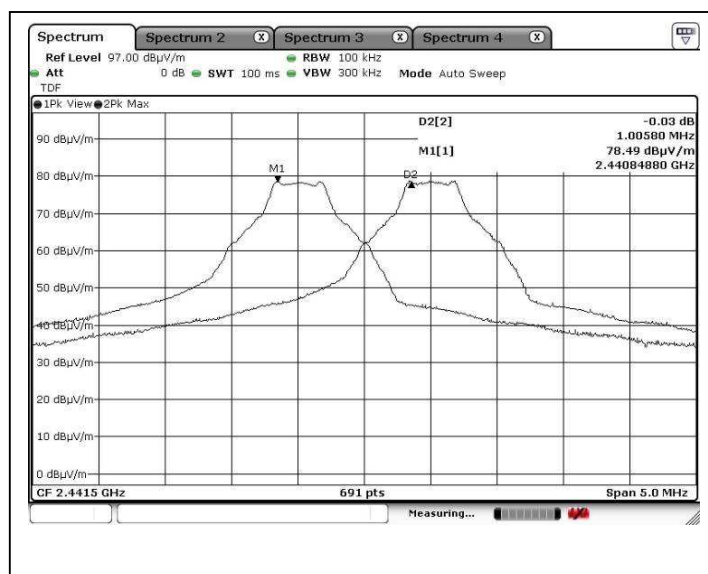
Report No. : AR0058421(9)

Date : 16 Apr 2014

A9. Bluetooth Channel Spacing



CH00-CH01



CH39-CH40

Tested by:

Mr. LEUNG Shu-kan, Ken

Reviewed by:

Mr. WONG Lap-pong, Andrew



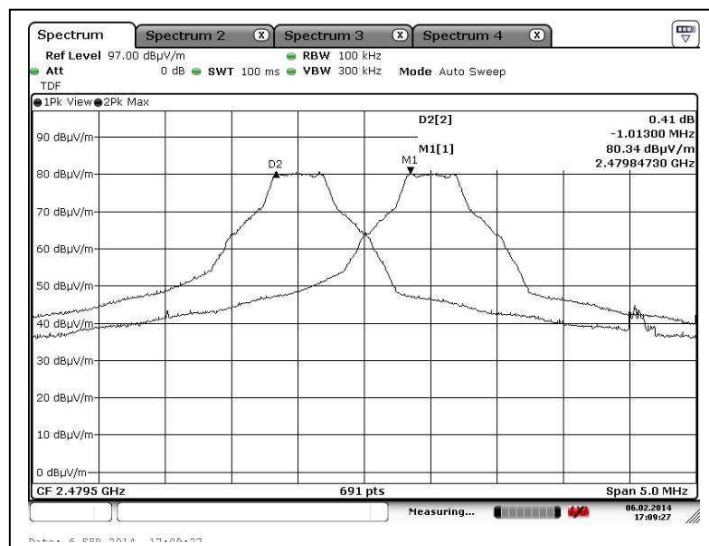
CMA Testing and Certification Laboratories

廠商會檢定中心 TEST REPORT

Report No. : AR0058421(9)

Date : 16 Apr 2014

A9. Bluetooth Channel Spacing



CH77-CH78

Tested by:

Mr. LEUNG Shu-kan, Ken

Reviewed by:

Mr. WONG Lap-pong, Andrew

Page 40 of 54

FCC ID: 2ABVAJY3530BT

This document is issued subject to the latest CMA Testing General Terms and Conditions of Testing and Inspection Services, available on request or accessible at website www.cmatcl.com.
This document shall not be reproduced except in full or with written approval by CMA Testing.

CMA Industrial Development Foundation Limited

Room 1302, Yan Hing Centre, 9-13 Wong Chuk Yeung St., Fo Tan, Shatin, N.T., Hong Kong.

Tel: (852) 2698 8198 Fax: (852) 2695 4177 E-mail: info@cmatcl.com Web Site: <http://www.cmatcl.com>



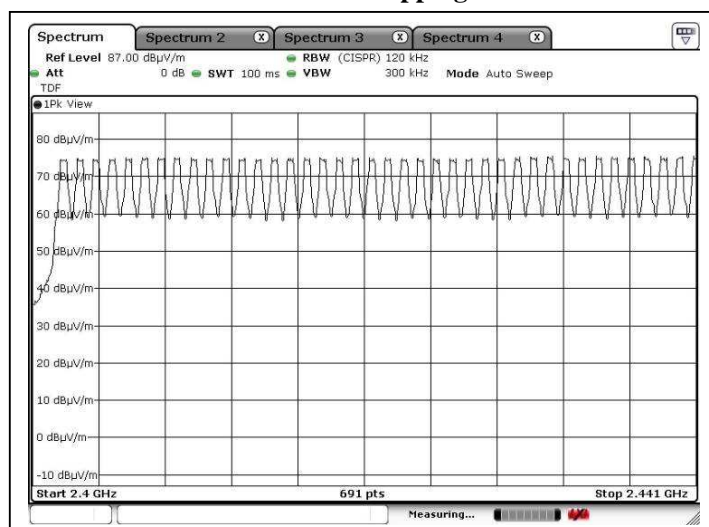
CMA Testing and Certification Laboratories

廠商會檢定中心 TEST REPORT

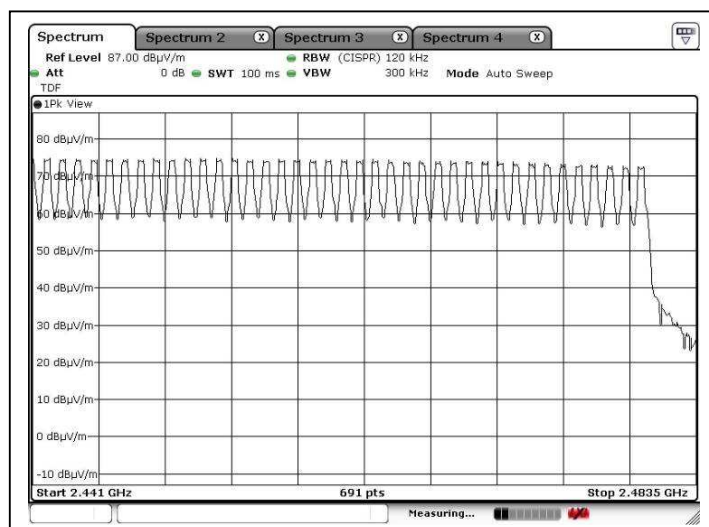
Report No. : AR0058421(9)

Date : 16 Apr 2014

A10. Bluetooth Hopping Channel



CH00-CH39



CH39-CH78

Tested by:

Ken

Mr. LEUNG Shu-kan, Ken

Reviewed by:

PR

Mr. WONG Lap-pong, Andrew

Page 41 of 54

FCC ID: 2ABVAJY3530BT

This document is issued subject to the latest CMA Testing General Terms and Conditions of Testing and Inspection Services, available on request or accessible at website www.cmatcl.com.
This document shall not be reproduced except in full or with written approval by CMA Testing.

CMA Industrial Development Foundation Limited

Room 1302, Yan Hing Centre, 9-13 Wong Chuk Yeung St., Fo Tan, Shatin, N.T., Hong Kong.

Tel: (852) 2698 8198 Fax: (852) 2695 4177 E-mail: info@cmatcl.com Web Site: <http://www.cmatcl.com>



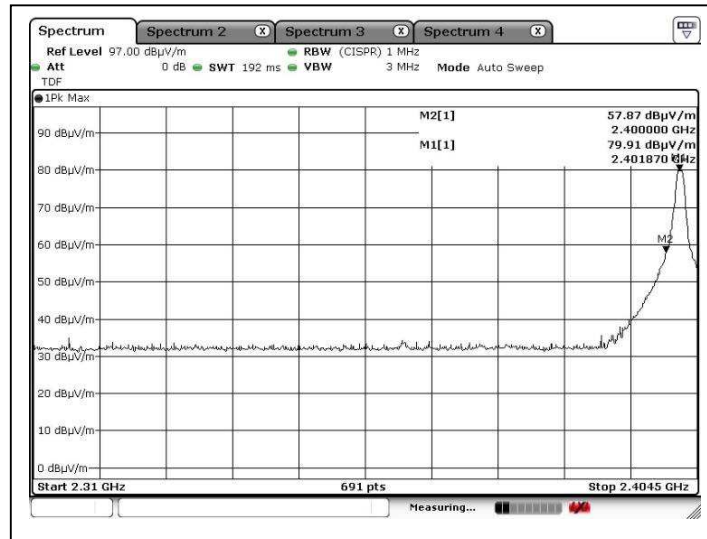
CMA Testing and Certification Laboratories

廠商會檢定中心 TEST REPORT

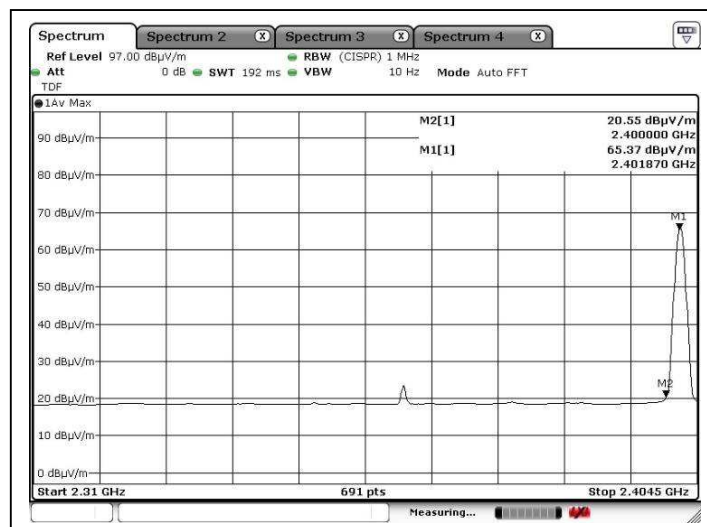
Report No. : AR0058421(9)

Date : 16 Apr 2014

A11. Bluetooth Band Edge



Lower edge (Peak measurement)



Lower edge (Average measurement)

Tested by:

Mr. LEUNG Shu-kan, Ken

Reviewed by:

Mr. WONG Lap-pong, Andrew



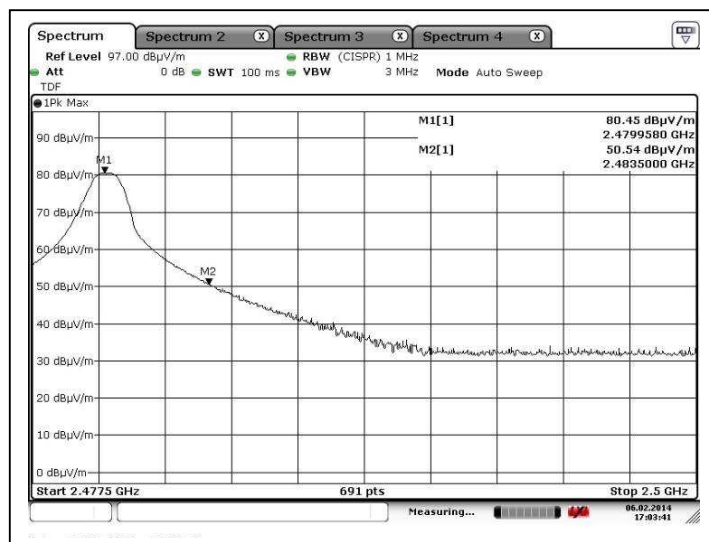
CMA Testing and Certification Laboratories

廠商會檢定中心 TEST REPORT

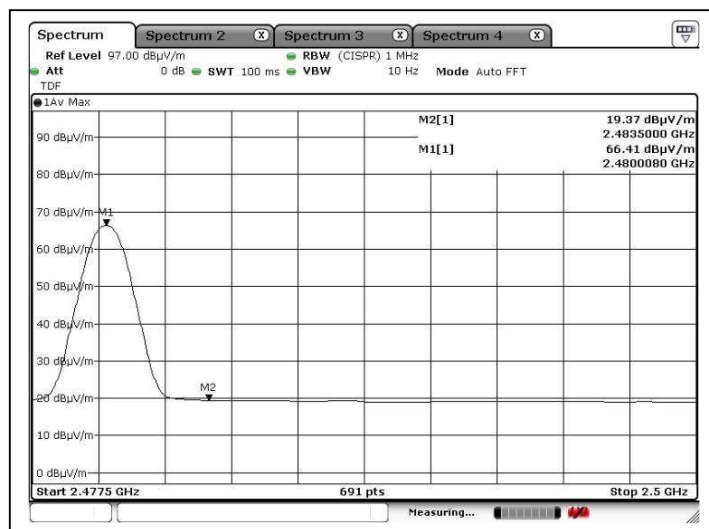
Report No. : AR0058421(9)

Date : 16 Apr 2014

A11. Bluetooth Band Edge



Upper edge (Peak measurement)



Upper edge (Average measurement)

Tested by:

Ken

Mr. LEUNG Shu-kan, Ken

Reviewed by:

PR

Mr. WONG Lap-pong, Andrew



CMA Testing and Certification Laboratories

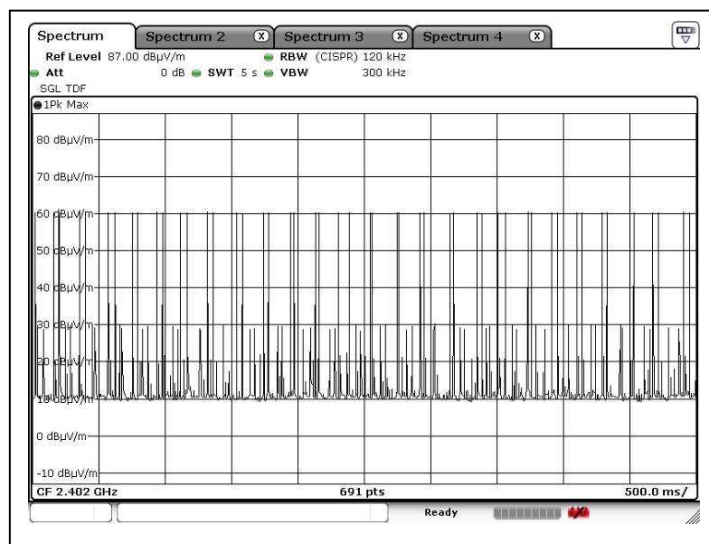
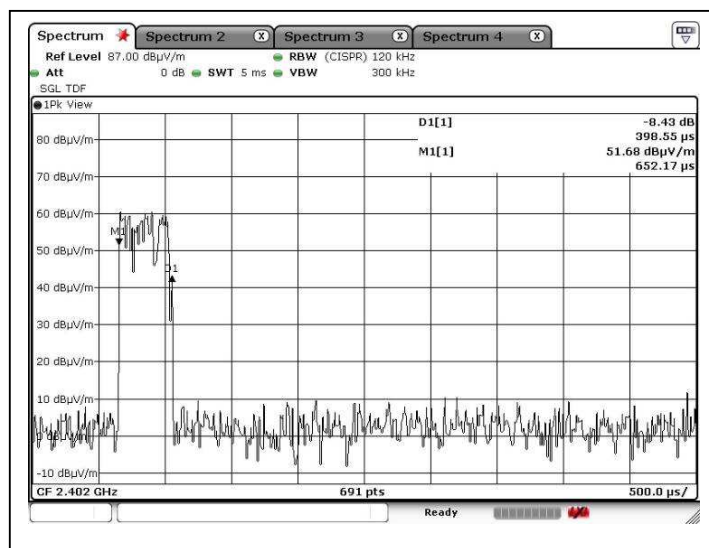
廠商會檢定中心 TEST REPORT

Report No. : AR0058421(9)

Date : 16 Apr 2014

A12. Bluetooth Average On Time

Packet: DH1
Channel: CH00



Tested by:
Mr. LEUNG Shu-kan, Ken

Reviewed by:
Mr. WONG Lap-pong, Andrew



CMA Testing and Certification Laboratories

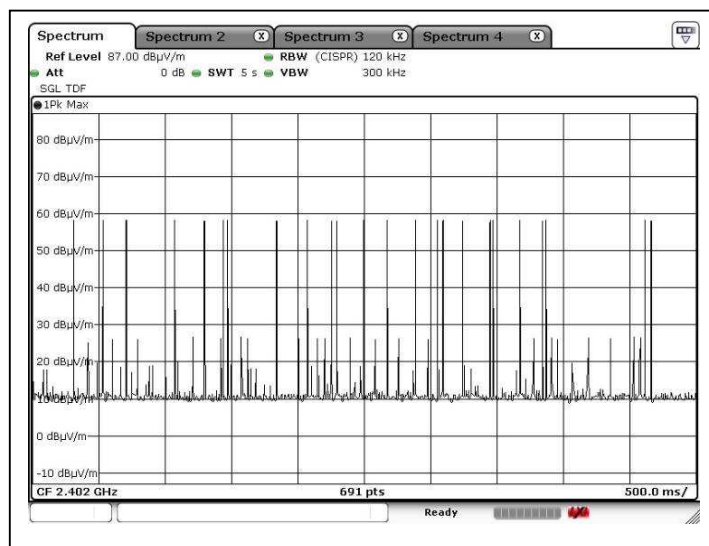
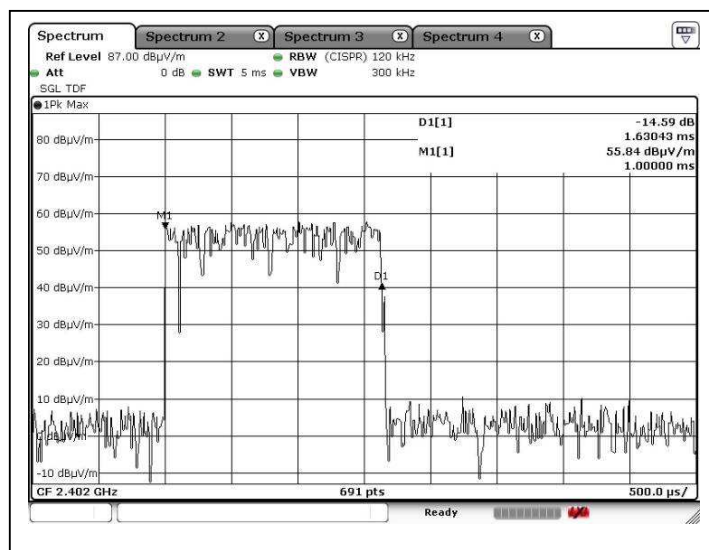
廠商會檢定中心 TEST REPORT

Report No. : AR0058421(9)

Date : 16 Apr 2014

A12. Bluetooth Average On Time

Packet: DH3
Channel: CH00



Tested by:
Mr. LEUNG Shu-kan, Ken

Reviewed by:
Mr. WONG Lap-pong, Andrew

Page 45 of 54

FCC ID: 2ABVAJY3530BT

This document is issued subject to the latest CMA Testing General Terms and Conditions of Testing and Inspection Services, available on request or accessible at website www.cmatcl.com.
This document shall not be reproduced except in full or with written approval by CMA Testing.

CMA Industrial Development Foundation Limited

Room 1302, Yan Hing Centre, 9-13 Wong Chuk Yeung St., Fo Tan, Shatin, N.T., Hong Kong.

Tel: (852) 2698 8198 Fax: (852) 2695 4177 E-mail: info@cmatcl.com Web Site: <http://www.cmatcl.com>



CMA Testing and Certification Laboratories

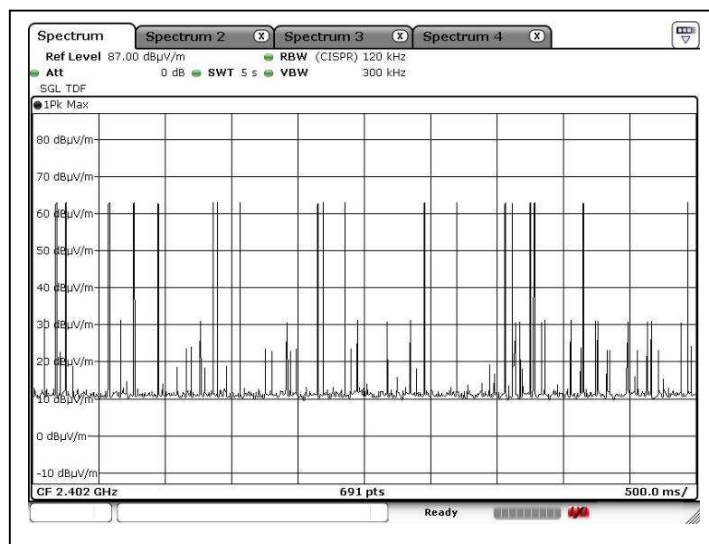
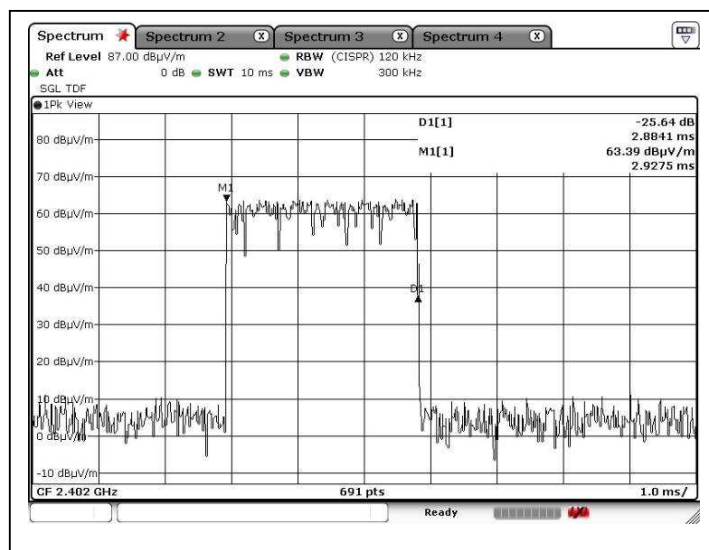
廠商會檢定中心 **TEST REPORT**

Report No. : AR0058421(9)

Date : 16 Apr 2014

A12. Bluetooth Average On Time

Packet: DH5
Channel: CH00



Tested by:
Mr. LEUNG Shu-kan, Ken

Reviewed by:
Mr. WONG Lap-pong, Andrew

Page 46 of 54

FCC ID: 2ABVAJY3530BT

This document is issued subject to the latest CMA Testing General Terms and Conditions of Testing and Inspection Services, available on request or accessible at website www.cmatcl.com.
This document shall not be reproduced except in full or with written approval by CMA Testing.

CMA Industrial Development Foundation Limited

Room 1302, Yan Hing Centre, 9-13 Wong Chuk Yeung St., Fo Tan, Shatin, N.T., Hong Kong.

Tel: (852) 2698 8198 Fax: (852) 2695 4177 E-mail: info@cmatcl.com Web Site: <http://www.cmatcl.com>



CMA Testing and Certification Laboratories

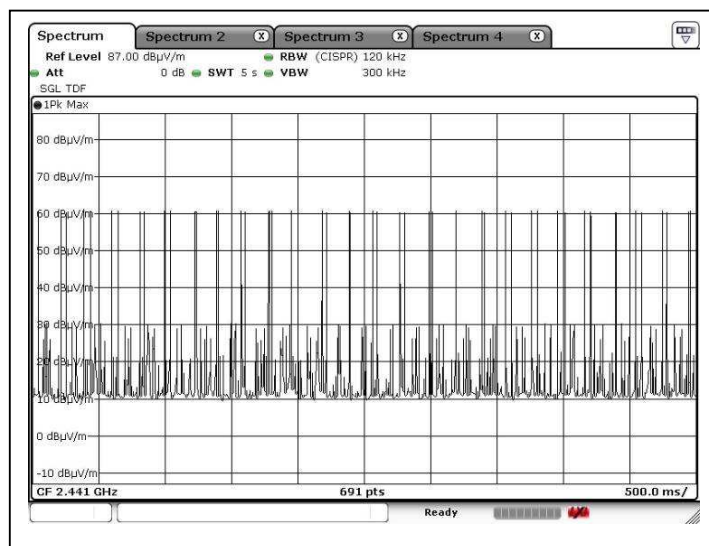
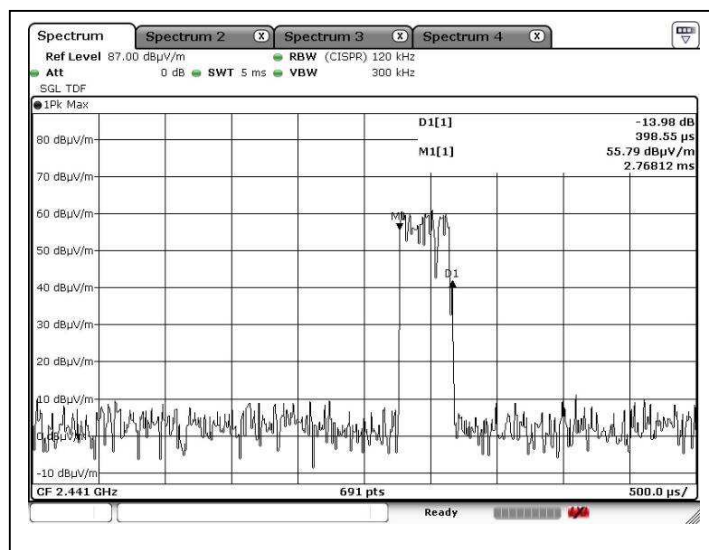
廠商會檢定中心 TEST REPORT

Report No. : AR0058421(9)

Date : 16 Apr 2014

A12. Bluetooth Average On Time

Packet: DH1
Channel: CH39



Tested by:
Mr. LEUNG Shu-kan, Ken

Reviewed by:
Mr. WONG Lap-pong, Andrew



CMA Testing and Certification Laboratories

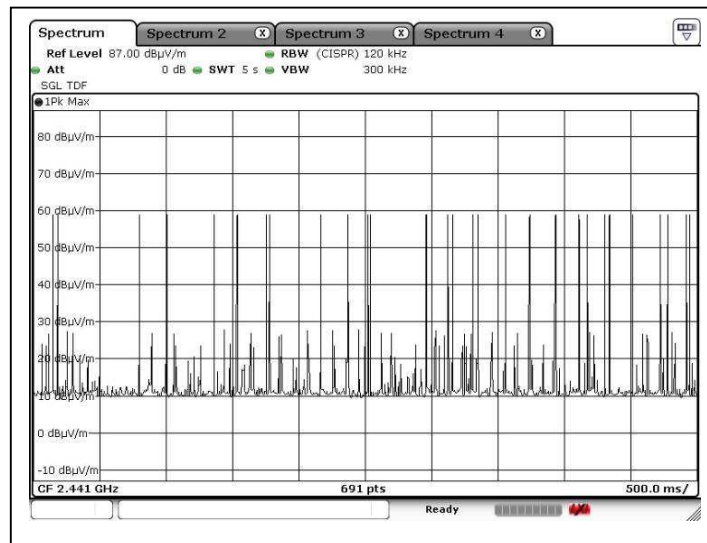
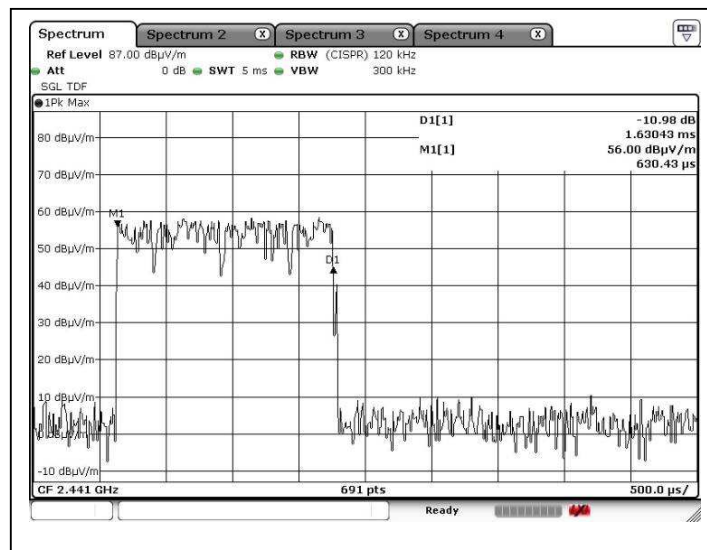
廠商會檢定中心 **TEST REPORT**

Report No. : AR0058421(9)

Date : 16 Apr 2014

A12. Bluetooth Average On Time

Packet: DH3
Channel: CH39



Tested by:
Mr. LEUNG Shu-kan, Ken

Reviewed by:
Mr. WONG Lap-pong, Andrew

Page 48 of 54

FCC ID: 2ABVAJY3530BT

This document is issued subject to the latest CMA Testing General Terms and Conditions of Testing and Inspection Services, available on request or accessible at website www.cmatcl.com.
This document shall not be reproduced except in full or with written approval by CMA Testing.

CMA Industrial Development Foundation Limited

Room 1302, Yan Hing Centre, 9-13 Wong Chuk Yeung St., Fo Tan, Shatin, N.T., Hong Kong.

Tel: (852) 2698 8198 Fax: (852) 2695 4177 E-mail: info@cmatcl.com Web Site: <http://www.cmatcl.com>



CMA Testing and Certification Laboratories

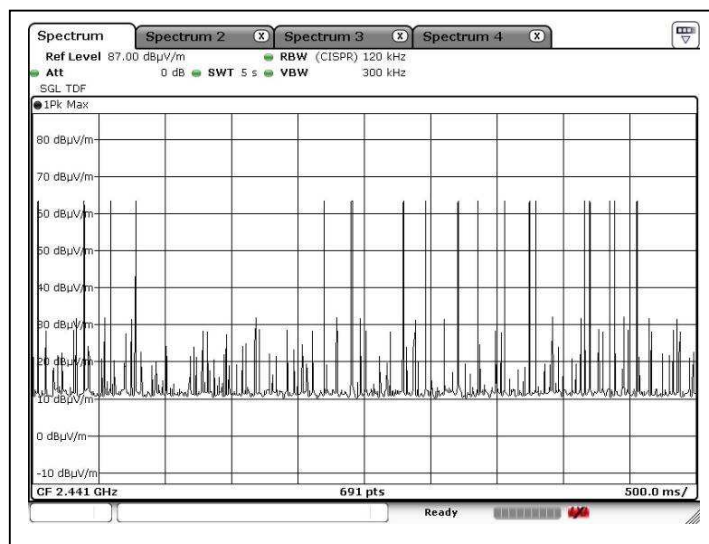
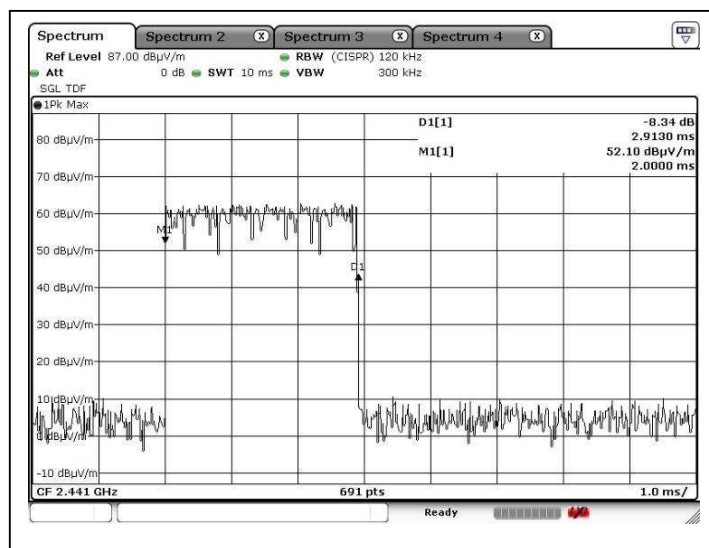
廠商會檢定中心 TEST REPORT

Report No. : AR0058421(9)

Date : 16 Apr 2014

A12. Bluetooth Average On Time

Packet: DH5
Channel: CH39



Tested by:
Mr. LEUNG Shu-kan, Ken

Reviewed by:
Mr. WONG Lap-pong, Andrew

Page 49 of 54

FCC ID: 2ABVAJY3530BT

This document is issued subject to the latest CMA Testing General Terms and Conditions of Testing and Inspection Services, available on request or accessible at website www.cmatcl.com.
This document shall not be reproduced except in full or with written approval by CMA Testing.

CMA Industrial Development Foundation Limited

Room 1302, Yan Hing Centre, 9-13 Wong Chuk Yeung St., Fo Tan, Shatin, N.T., Hong Kong.

Tel: (852) 2698 8198 Fax: (852) 2695 4177 E-mail: info@cmatcl.com Web Site: <http://www.cmatcl.com>



CMA Testing and Certification Laboratories

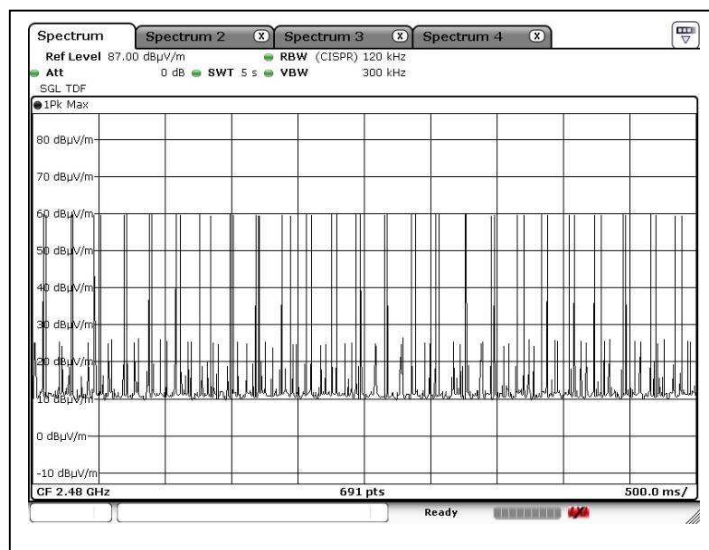
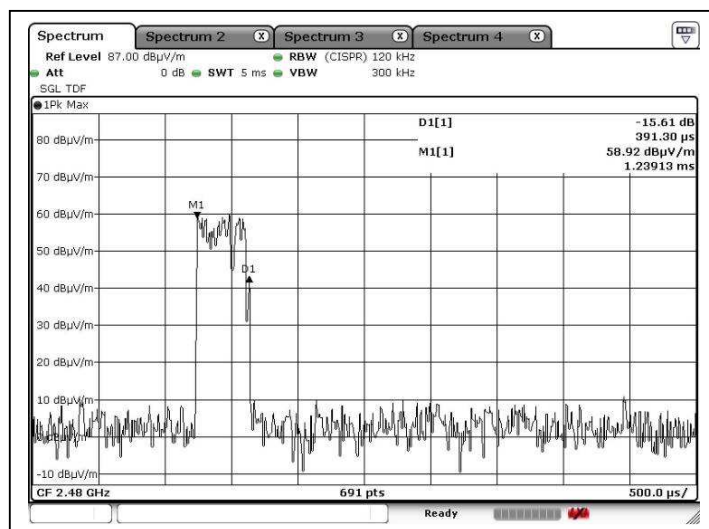
廠商會檢定中心 TEST REPORT

Report No. : AR0058421(9)

Date : 16 Apr 2014

A12. Bluetooth Average On Time

Packet: DH1
Channel: CH78



Tested by:
Mr. LEUNG Shu-kan, Ken

Reviewed by:
Mr. WONG Lap-pong, Andrew

Page 50 of 54

FCC ID: 2ABVAJY3530BT

This document is issued subject to the latest CMA Testing General Terms and Conditions of Testing and Inspection Services, available on request or accessible at website www.cmatcl.com.
This document shall not be reproduced except in full or with written approval by CMA Testing.

CMA Industrial Development Foundation Limited

Room 1302, Yan Hing Centre, 9-13 Wong Chuk Yeung St., Fo Tan, Shatin, N.T., Hong Kong.

Tel: (852) 2698 8198 Fax: (852) 2695 4177 E-mail: info@cmatcl.com Web Site: <http://www.cmatcl.com>



CMA Testing and Certification Laboratories

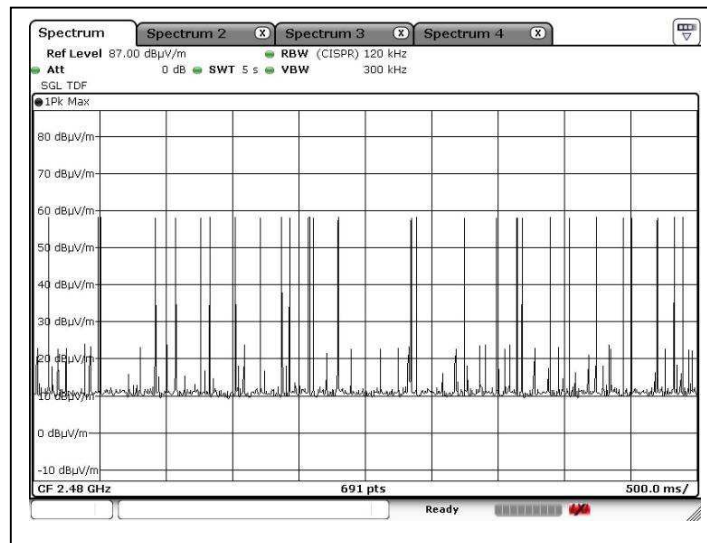
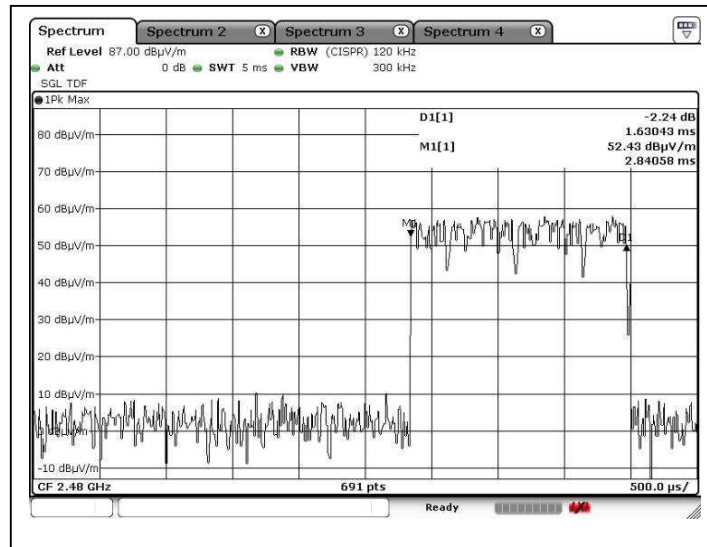
廠商會檢定中心 TEST REPORT

Report No. : AR0058421(9)

Date : 16 Apr 2014

A12. Bluetooth Average On Time

Packet: DH3
Channel: CH78



Tested by:
Mr. LEUNG Shu-kan, Ken

Reviewed by:
Mr. WONG Lap-pong, Andrew



CMA Testing and Certification Laboratories

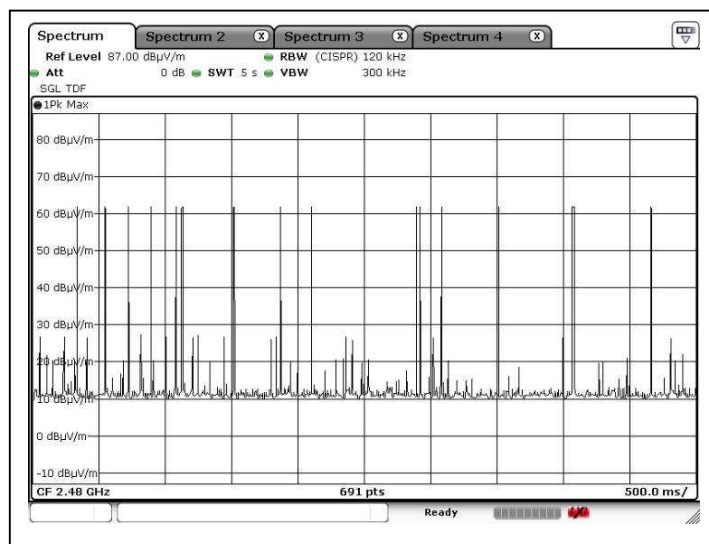
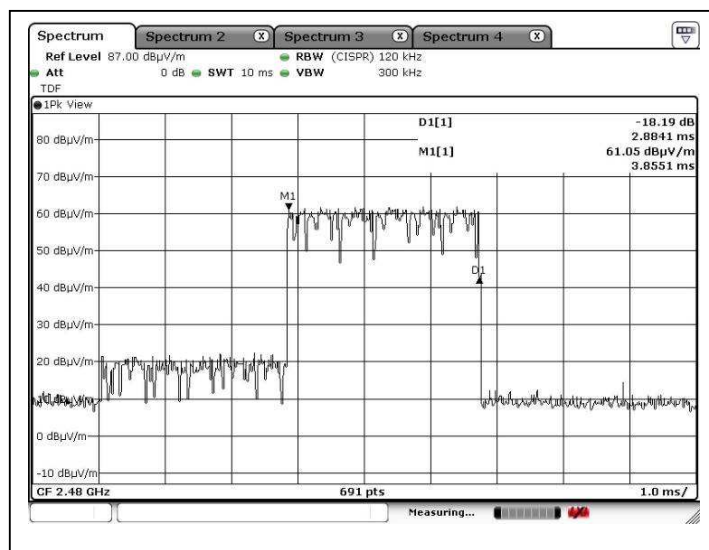
廠商會檢定中心 TEST REPORT

Report No. : AR0058421(9)

Date : 16 Apr 2014

A12. Bluetooth Average On Time

Packet: DH5
Channel: CH78



Tested by:
Mr. LEUNG Shu-kan, Ken

Reviewed by:
Mr. WONG Lap-pong, Andrew



CMA Testing and Certification Laboratories

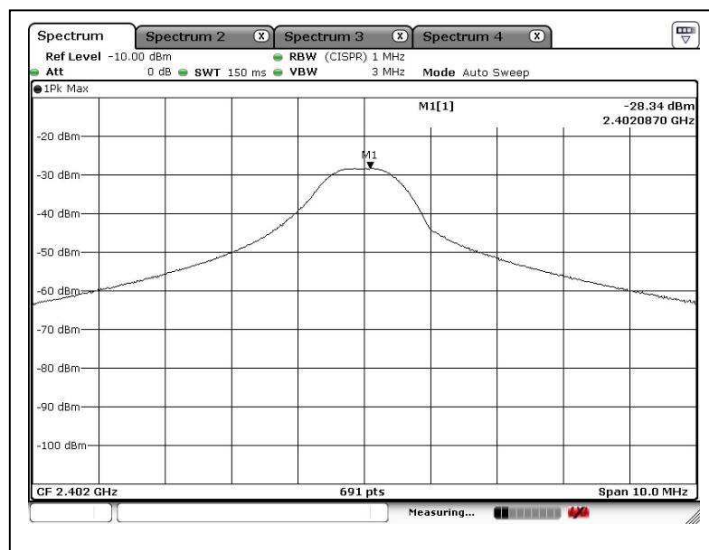
廠商會檢定中心 TEST REPORT

Report No. : AR0058421(9)

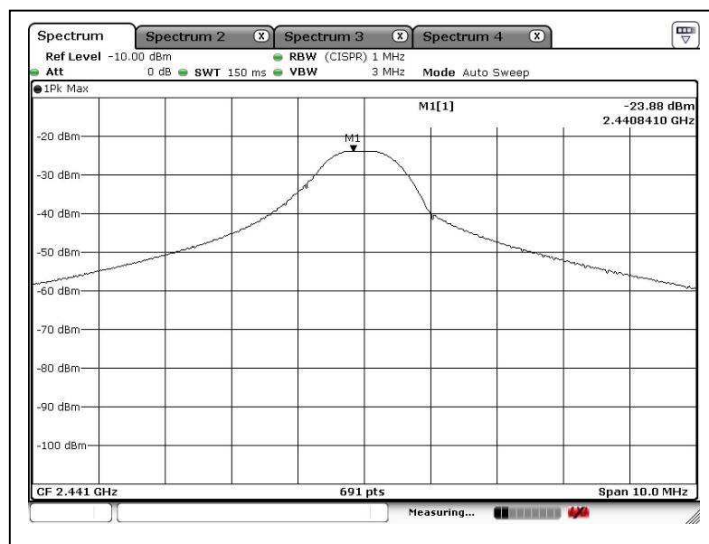
Date : 16 Apr 2014

A13. Transmission Power

Channel: CH00



Channel: CH39



Tested by:
Mr. LEUNG Shu-kan, Ken

Reviewed by:
Mr. WONG Lap-pong, Andrew



CMA Testing and Certification Laboratories

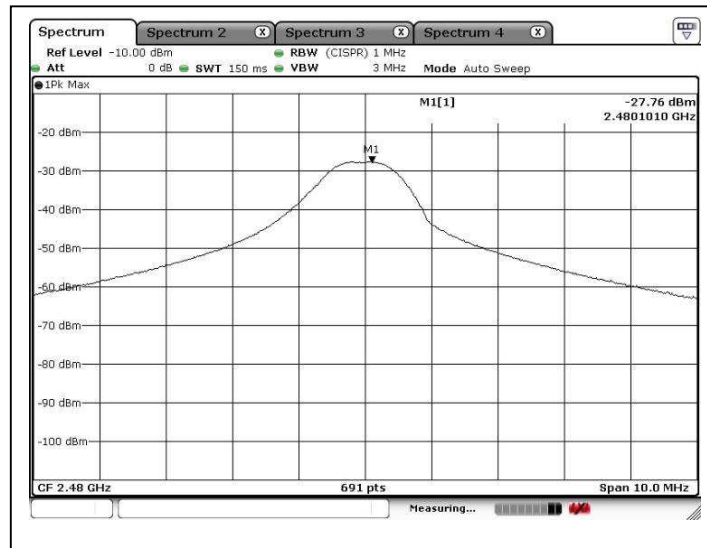
廠商會檢定中心 **TEST REPORT**

Report No. : AR0058421(9)

Date : 16 Apr 2014

A13. Transmission Power

Channel: CH78



***** End of Report *****

Tested by:

Mr. LEUNG Shu-kan, Ken

Reviewed by:

Mr. WONG Lap-pong, Andrew

Page 54 of 54

FCC ID: 2ABVAJY3530BT

This document is issued subject to the latest CMA Testing General Terms and Conditions of Testing and Inspection Services, available on request or accessible at website www.cmatcl.com.
This document shall not be reproduced except in full or with written approval by CMA Testing.

CMA Industrial Development Foundation Limited

Room 1302, Yan Hing Centre, 9-13 Wong Chuk Yeung St., Fo Tan, Shatin, N.T., Hong Kong.

Tel: (852) 2698 8198 Fax: (852) 2695 4177 E-mail: info@cmatcl.com Web Site: <http://www.cmatcl.com>