

ZEKI



7" Capacitive Multi-touch Tablet

User's Guide for Model TBQG774B v998-01



Important Safety Instructions

1. Read these Instructions.
2. Keep these Instructions.
3. Heed all Warnings.
4. Follow all instructions.
5. Do not use this apparatus near water.
6. Clean only with a dry cloth.
7. Do not block any ventilation openings. Install in accordance with the manufacturer's instructions.
8. Do not install near any heat sources such as radiators, heat registers, stoves, or other apparatus (including amplifiers) that produce heat.
9. Do not defeat the safety purpose of the polarized or grounding - type plug. A polarized plug has two blades with one wider than the other. A grounding type plug has two blades and a third grounding prong. The wide blade or the third prong are provided for your safety. When the provided plug does not fit into your outlet, consult an electrician for replacement of the obsolete outlet.
10. Protect the power cord from being walked on or pinched particularly at plugs, convenience receptacles, and the point where they exit from the apparatus.
11. Only use attachments/accessories specified by the manufacturer.
12. Unplug this apparatus during lightning storms or when unused for long periods of time.
13. Refer all servicing to qualified service personnel. Servicing is required when the apparatus has been damaged in any way, such as power-supply cord or plug is damaged, liquid has been spilled or objects have fallen into the apparatus, the apparatus has been exposed to rain or moisture, does not operate normally, or has been dropped.
14. Use only with a cart, stand, tripod, bracket, or table specified by the manufacturer, or sold with the apparatus. When a cart is used, use caution when moving the cart/apparatus combination to avoid injury from tip-over.

FCC Warnings

Warning: Changes or modifications to this unit not expressly approved by the party responsible for compliance could void the user's authority to operate the equipment.
NOTE: This equipment has been tested

and found to comply with the limits for a Class B digital device, pursuant to Part 15 of the FCC Rules. These limits are designed to provide reasonable protection against harmful interference in a residential installation. This equipment generates, uses, and can radiate radio frequency energy and, if not installed and used in accordance with the instructions, may cause harmful interference to radio communications. However, there is no guarantee that interference will not occur in a particular installation. If this equipment does cause harmful interference to radio or television reception, which can be determined by turning the equipment off and on, the user is encouraged to try to correct the interference by one or more of the following measures:

- Reorient or relocate the receiving antenna.
- Increase the separation between the equipment and receiver.
- Connect the equipment into an outlet on a circuit different from that to which the receiver is connected.
- Consult the dealer or an experienced radio/TV technician for help.

Additional Warnings

- **WARNING:** Lithium batteries, like all rechargeable batteries, are recyclable and should be recycled or disposed of in normal household waste. Contact your local government for disposal or recycling practices in your area. They should never be incinerated since they might explode.
- Mains plug is used as disconnect device and it should remain readily operable during intended use. In order to disconnect the apparatus from the mains completely, the mains plug should be disconnected from the mains socket outlet completely.

La prise du secteur est utilisée pour déconnecter le système. La prise du secteur ne doit pas être obstruée ou doit être facilement accessible pendant son utilisation. Pour être complètement déconnecté de l'alimentation d'entrée, la prise doit être débranchée du secteur.



Table of Contents

- 5 | Specifications**
- 6 | Your 7" ZEKI Tablet**
 - Orientation
- 8 | Right Out of the Box**
 - Accessories
 - Battery
- 10 | Using Your Tablet**
 - Power button
 - Security
 - Important Icons
 - Screen Orientation
 - Gestures
 - Notifications
 - Quick Settings
 - Settings & Personalization
- 18 | The Internet**
 - Wi-Fi Connections
 - Internet Browser
 - Using the Browser
- 20 | Google and Email**
 - Gmail
 - Email
- 21 | Apps**
 - Google Play™
- 22 | Other Devices**
 - USB & HDMI Connections
 - Expanding Storage
- 24 | Camera**
 - Pictures, Video & Gallery
 - Using the Camera
- 26 | Company Information**
 - Customer Support





Specifications

- » 7" display
- » 5 point capacitive multi-touch screen
- » Full color touch LCD display
- » Android™ OS 4.3
- » Quad core 2 GHz processor
- » Built-in 1GB RAM
- » 8GB installed flash memory
- » Expandable memory and Micro-SD card reader (up to 32 GB)
- » G-Sensor for screen rotation
- » 1024 x 600 native resolution
- » Front facing .3 MP camera
- » Built-in microphone
- » Digital video: MOV, MKV, AVI, RM, RMVB, FLV, WMV, MP4, VOB
- » Digital audio: MP3, WMA (non-DRM), WAV
- » Digital photos: JPEG, BMP, PNG
- » eBooks: PDF, PDF DRM, EPUB, EPUB DRM
- » Apps: Browser, Gallery, Movie Player, File Browser, eMusic, Clock, Calculator, Calendar, Camera,
- » App Stores: Google Play™, Opera™ Mobile, Soc.io™ Mall
- » eBook Reader: Google Play Book™, Play™ Magazines, Soc.io™ eReader
- » Google Apps: Google+™, Maps™, Chrome™ browser, Youtube™, Google Search™, Play Music™, Play Movie™, Hangouts™
- » Micro-HDMI output (1080p)
- » Micro-USB port
- » 3.5mm headphone jack
- » Built-in speaker
- » Built-in 2800 mAH rechargeable battery: approximately 2.5 hours of continuous use



Note: For best results please run the latest Android operating system. To find your device's version number or check for the latest system update, go to **Settings > About Tablet** and look for Android version or System updates.

Specifications are subject to change without prior notice.



Your 7" ZEKI Tablet

ORIENTATION

Front



- 1. Notifications
- 2. Primary Apps Bar
- 3. Navigation Bar
- 4. Volume
- 5. Power Button
- 6. Camera
- 7. Status and Settings

Your 7" ZEKI Tablet

Rear



- | | |
|-------------------|-----------------------|
| 1. Speaker | 5. HDMI Input |
| 2. Power Button | 6. Volume |
| 3. Headphone Jack | 7. Hard Reset Button |
| 4. Micro USB Port | 8. Micro SD Card Slot |

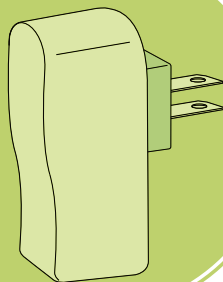


Right Out of the Box

ACCESSORIES

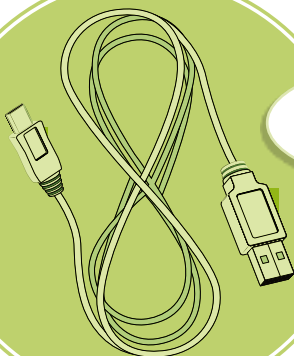
AC/DC Power Adapter

Used to charge the tablet.



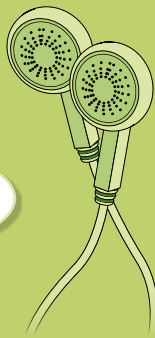
Micro USB to USB Cable

Used to connect to a computer or charge the tablet.



Stereo Earbuds

Caution: Playing music with the volume turned up may damage your hearing and cause permanent hearing loss.



Right Out of the Box

BATTERY

It is necessary to charge your tablet before it can be powered on. The initial charge time is approximately 10 hours.

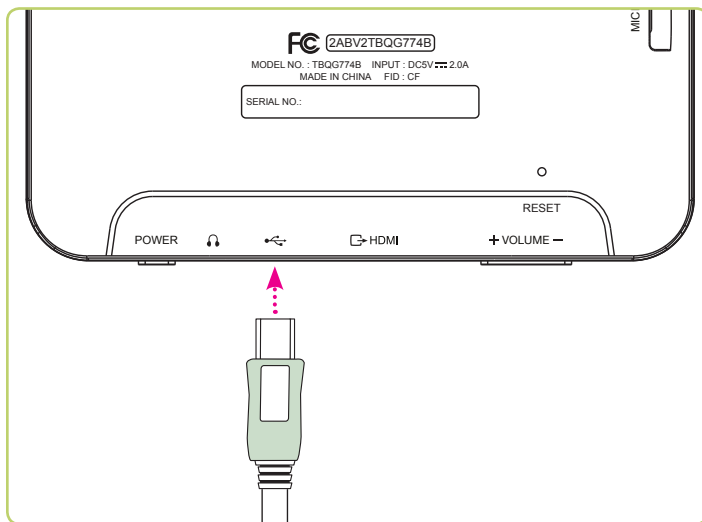
When the Battery Indicator signals that the charge is running low, connect the tablet to a USB or AC power adapter (included). It is normal for the body of the tablet to become warm during charging or after extended periods of use.

Charge the Battery Using the AC/DC Adapter:

- » Insert the small plug of the Micro-USB cord into the Micro-USB input on the tablet.
- » Insert the large end of the USB plug into the AC/DC adapter (included).

Charge the Battery Using USB:

- » Insert the small plug of the Micro-USB cord into the Micro-USB input on the tablet.
- » Insert the large end of the USB plug into a computer.



Rear view

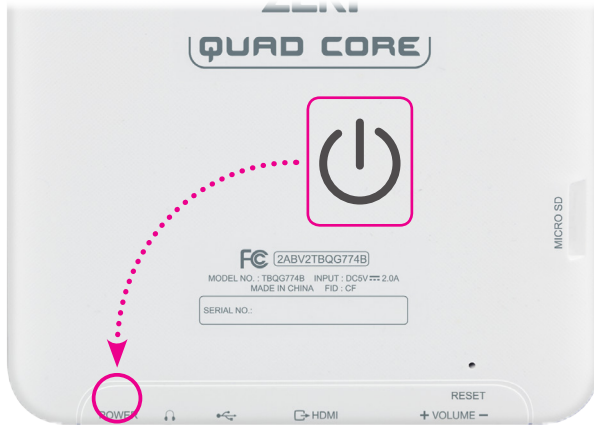


Using Your Tablet

POWER BUTTON

The Power Button on your ZEKI Tablet performs a variety of functions. It will power the tablet on, off, or put the tablet into Sleep mode. Sleep is a power saving mode that temporarily disables certain functions, namely the screen. Your tablet will still do things like play music, and remains ready to use at a moments' notice.

Rear view



Power Your Tablet On

- » Press the power button on the side of the tablet and wait for the screen to activate.

Put Your Tablet in Sleep Mode

- » Press the Power Button once to put the tablet to Sleep.

Power Your Tablet Off

- » Press and hold the Power Button to turn the tablet completely off.



You can set the amount of time it takes for your tablet to go into Sleep mode. Go to: **Settings > Display > Sleep** and choose from the options there.

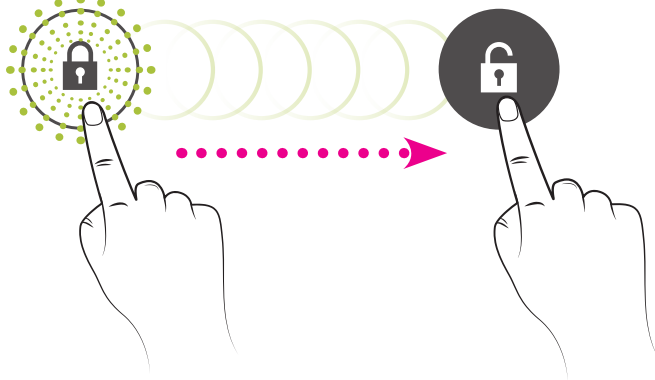


Using Your Tablet

SECURITY

Lock Screen

The Lock Screen must be deactivated after powering the tablet on or waking from Sleep. To do this, simply hold the Lock Icon and drag it towards the Unlock Icon.



Changing Security Settings for the Lock Screen

The Lock Slider is the default security in place for the tablet. If you want to make your tablet more secure you can choose from several different options by going to: **Settings > Security > Screen Security**.

Security Options

- » **Slide**
Default Lock slider with no additional security.
- » **Pattern**
Access the tablet using a drawn pattern.
- » **PIN**
Access the tablet using a Personal Identification Number.
- » **Password**
Access the tablet using a password.



We **STRONGLY** suggest you write down or otherwise keep track of your password, PIN, or pattern in some way. They cannot be reversed once implemented.

Using Your Tablet

IMPORTANT ICONS

General Icons



Lock
Indicates the tablet is locked.



Screen shot
Tap to take a screen shot.



Download
Go directly to downloaded files in the File Browser.



Volume
Tap to adjust the volume up or down.



Home
Tap to return to the Home screen.



Apps Menu
Press to access apps and widgets on the tablet.



Screens
Tap to view open windows and apps.



Back
Tap to go back to a previous screen or page.

Status, Menus and Settings



Wi-Fi
Indicates the strength of a connected Wi-Fi signal.



Battery
Indicates the strength of the battery charge.



Settings
Tap to change various aspects of the tablet.



Clear Notifications
Tap to clear notifications in the Notifications menu.

Apps



Browser
Tap to browse the internet.



Camera
Tap to activate the camera.



Gallery
Tap to view pictures and videos on the tablet.



Google Play Store
Tap to browse and download apps.



Using Your Tablet

SCREEN ORIENTATION

Your tablet will automatically adjust from portrait to landscape mode as you rotate it. You can disable this feature by dragging the Quick Settings tab down from the top right of the screen and tapping Auto-Rotate.

Landscape



Portrait

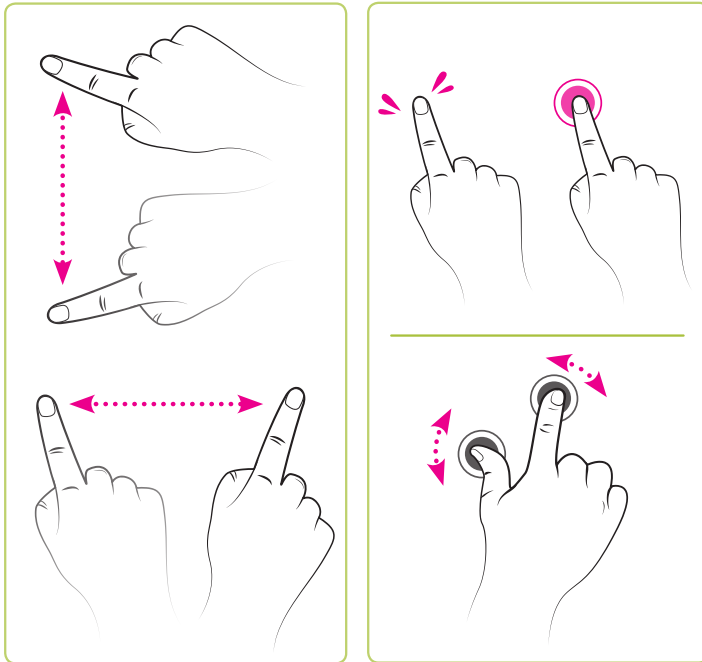


Using Your Tablet

GESTURES

The screen on your ZEKL tablet is capable of accepting up to five points of contact at once and is the main interface through which you will interact with your tablet.

These simple hand gestures are used to navigate the screen.



Swipe

To navigate the screen simply touch and drag your finger left, right, up, or down.

Tap/Hold

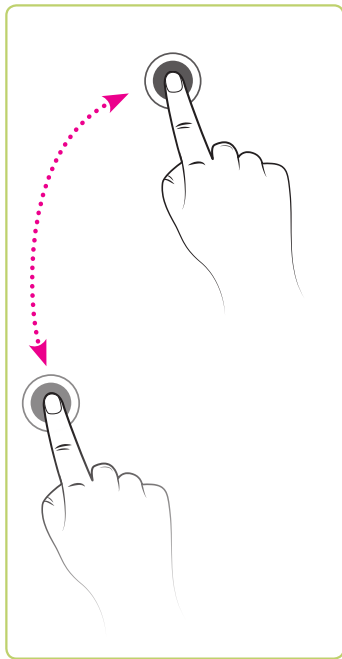
Briefly tap the screen to select an icon, item, or app. Press and hold to bring up menus or other options.

Rotate

Hold and turn two fingers to rotate things like pictures and games.

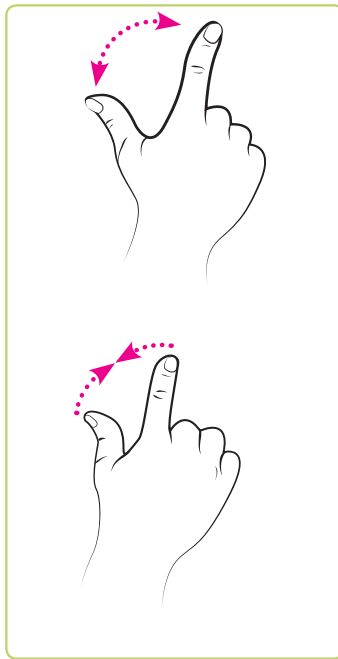


Using Your Tablet



Drag

To Drag, touch and hold any item on the screen, such as an app, and just move it to any destination.



Zoom In/Out

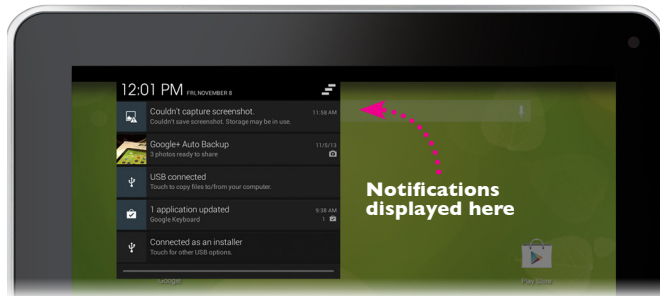
To zoom in or out, touch the screen with two fingers and pinch in or out.

You can also zoom in and out of the screen by quickly tapping it twice.

Using Your Tablet

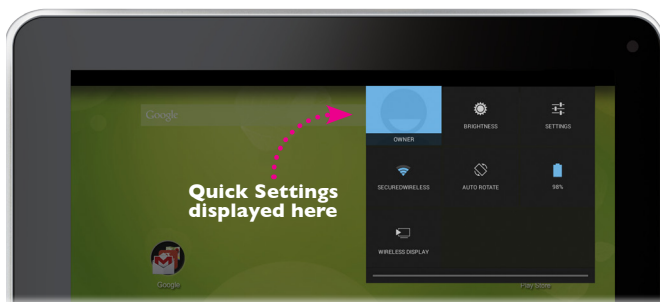
NOTIFICATIONS

Your tablet will display new emails, messages, the status of downloads, and other notifications in the upper left hand corner of the screen. To view them, drag the notifications bar down. You can clear your notifications by pressing the icon on the right of the notifications bar. You can exit the notifications panel by dragging up from the bottom of the panel, or pressing the back button, or pressing the screen anywhere outside of the panel.



QUICK SETTINGS

You can access the quick settings to change things like screen brightness or view the strength of the battery and Wi-Fi signal. You can also change the current user that is logged into the tablet. To access the Quick Settings menu, drag down from the upper right hand area of the screen next to the clock. You can exit the menu the same way you can with the Notifications panel.



Using Your Tablet

SETTINGS & PERSONALIZATION

The Settings menu allows access to Wireless/Network, Device, Personal User, and System settings. From here you can also configure your tablet in a number of ways to make it your own.

Changing Wallpaper

To change your wallpaper press and hold the Home screen, and choose the type of wallpaper you want when prompted by the menu.

You may also do this by going to: Settings > Display > Wallpaper.

- » **Gallery**

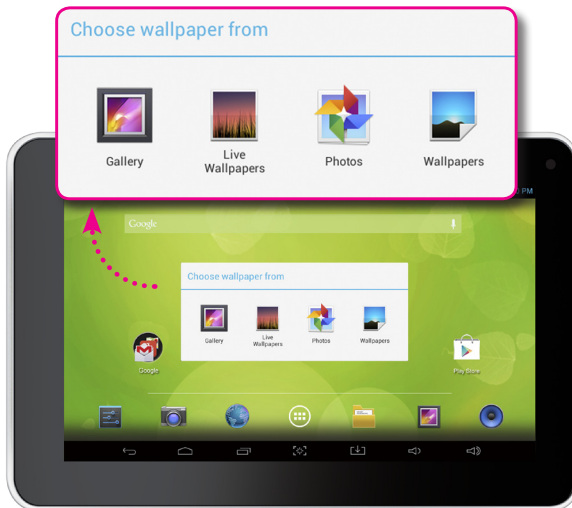
Choose from images taken with the tablet's camera, screenshots, or downloaded to the tablet.

- » **Live Wallpaper**

Choose from different animated wallpapers. Some animated wallpapers have settings that can be adjusted. Tap Settings when prompted to browse the options.

- » **Wallpapers**

Choose from different images that came with the tablet.



Live wallpapers require more power to run. You may see slower performance and need to charge the battery more often when using a live wallpaper.

The Internet

WI-FI CONNECTIONS

To access the internet, download apps, or use other online services you must have your tablet's Wi-Fi receiver enabled and a wireless network or "hotspot" selected.

To Connect to a Wi-Fi Hotspot

- » Go to: Settings > Wi-Fi
- » Slide the Wi-Fi switch to the ON position, select the desired network from the list, and tap Connect. If the network is secured with a passkey you will be prompted to enter it.
- » Once completed, the display will show "Connected" under the name of the network.



Your tablet should automatically detect available networks, but if you want to search for others or refresh the list press the **Scan** button.

Turning off Wi-Fi will conserve battery power and extend the life of the charge.



INTERNET BROWSER

Once connected to a Wi-Fi network you will have access to the internet.

To Being Browsing the Internet

- » Tap the Browser icon.
- » Once the Browser is open, you can tap the search bar at the top of the screen or on the web browser's search page.
- » The keyboard will automatically appear. Simply start typing and tap Enter to begin your search.



Browser Buttons:

Back/Forward will go to previous web pages that you have visited during your browser session.

Refresh will reload the current web page.

You can open new tabs in the Browser, which is useful for viewing multiple web pages. To do this, press the **+** button at the top of the Browser.

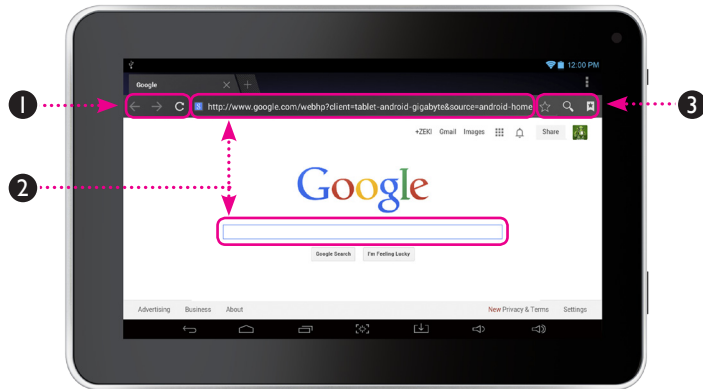
Bookmarks allow you quick and easy access to your favorite web pages.

To Bookmark a page tap ☆

To see pages you've already book marked tap ★

The Internet

USING THE BROWSER



- | | |
|---|---------------------------------|
| 1. Back, Forward, Refresh | 5. New Tab |
| 2. Search Bars | 6. Keyboard |
| 3. Bookmark Page, Search, Saved Bookmarks | 7. Google Voice/ Speech to Text |
| 4. Current Window/Tab | |

Google and Email

GMAIL

A Google account is an easy and convenient way to get access to Google services, including Gmail, the Play store, Hangouts (Google's chat/messaging service), Google+ and others services. It will automatically link all of these services to your account

Gmail is Google's email delivery service. Your tablet comes with Gmail pre-loaded. It can be accessed by tapping the Gmail icon in the App menu or in the Google icon.

Create a New Google Account

- » Go to: Settings > Accounts > Add New > Google
- » Tap Create New Account.
- » Enter your information as requested. When completed you will have access to Gmail and other Google services.

Use an Existing Google Account

- » Go to: Settings > Accounts > Add New > Google
- » Tap Existing.
- » Enter your information as requested. When completed you will have access to your existing Google account.

EMAIL

You can also access your email using the default Android email app. Android email can access multiple email accounts from different providers and is a useful way to gather all of your email in one location.

Additionally, email can always be accessed through a page in the web browser, just like on a regular computer.

Adding Accounts to Email

- » Tap the Email icon in the App menu.
- » Enter the requested information and follow the instructions.



You can also download other email provider's apps (Yahoo, Outlook, etc.) from the Google Play store.

To add more accounts go to: **Settings > Accounts > + Add New** and select the type of account you wish to add.



The Apps

GOOGLE PLAY™

The Google Play store is the default App service installed on your Zeki tablet. It is your gateway to free or paid apps that will enhance your tablet experience. Everything from games to music, movies and books can be found in the Play store. You must have a Google account to access the Play store.

Downloading Apps from the Google Play Store

- » Tap the Google Play icon on the Home screen.
- » Browse or search for an app, game, or other media.
- » Tap the one you want and then tap Install.



Some apps cost money and will need to be purchased before they can be installed.

Adding Apps to Your Home Screen

- » Tap the Apps icon at the bottom of the screen and find the one you want.
- » Press and hold, then drag it to the screen.

Deleting Apps from Your Tablet

- » Tap the Google Play icon.
- » Once the Play store is open, tap the Play store icon in the bar at the top of the screen, then tap My Apps from the drop down list.
- » Select the app you wish to uninstall and tap Uninstall.



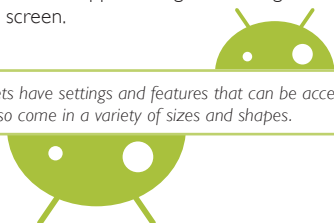
Most of the pre-loaded apps that came with your tablet cannot be uninstalled.

Removing an App or Widget from the Home Screen

- » Press and hold the app or widget and drag it to X Remove at the top of the screen.



Many widgets have settings and features that can be accessed by tapping them. They can also come in a variety of sizes and shapes.



Other Devices

USB & HDMI CONNECTIONS

Your Zeki tablet is able to connect to a variety of different devices that let you transfer files, link to a television, and increase storage space on your device. This can be a useful feature for making presentations from the tablet, viewing pictures, watching videos, or playing music.

Transferring files to or from a PC/Mac

- » Using a Micro-USB to USB cable (included), plug the small end into the Micro-USB port on the tablet, and the larger end into a USB port on computer.
- » The USB Connected screen will appear on the tablet. Press Turn On USB Storage to connect to the computer.
- » The tablet will connect to the computer as a storage device. Using the computer, you can access and transfer files to or from the tablet.



You can turn USB Storage on or off by opening the Notifications panel in the upper left hand area of the screen.

You must transfer files using your computer, the tablet cannot initiate a transfer.

You can still operate the tablet while it is plugged into the computer. However, some apps and services will not be unavailable until USB Storage is turned off.

Closing a connection to a PC/Mac

- » Select the tablet in your computer's file browser and Eject it to safely sever the connection.
- » From the USB Storage screen on the tablet tap Turn Off USB Storage.
- » Unplug both devices.



You can also charge your tablet using a USB connection to your computer. The tablet does not have to be connected as storage device to charge.

Connecting to a TV using HDMI

- » Connect one end of an HDMI cable (not included) into the tablet's HDMI input and the other end into the TV's HDMI input. Be sure to select the correct input source (HDMI) on the television.
- » The tablet will automatically start displaying to the TV. You can change resolution from 720p to 1080p by dragging down the Notifications menu and tapping HDMI Switch.



Other Devices

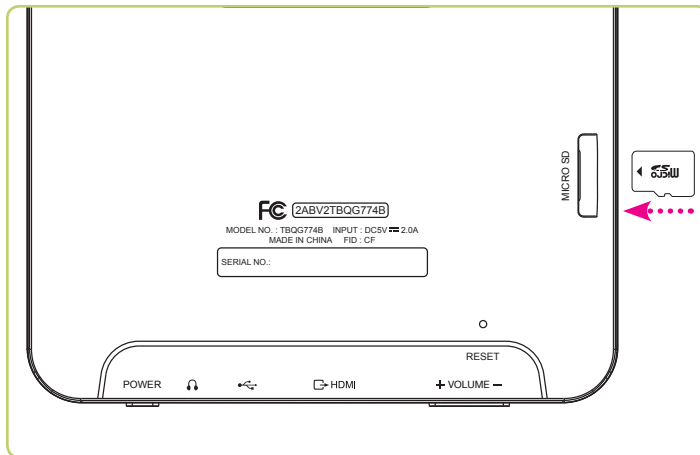
EXPANDING STORAGE

The tablet has the capacity to have its memory storage expanded through the use of a Micro SD card. The maximum size the tablet will accept is 32GB.

Connecting a Micro SD card

- » Power off the tablet.
- » Insert the Micro SD Card into the Card Slot. When you power the tablet back on the SD card will be mounted automatically and ready to use.

Rear view



Accessing a Micro SD card

- » To access the content on the Micro SD Card tap the File Browser icon on the Home screen.
- » Select External Storage Card from the device list

Removing a Micro SD card

- » To remove a Micro SD Card, go to:
Settings > Storage > Unmount Micro SD Card
- » Remove the card from the tablet by gently pushing it until it pops out.



23


Camera

PICTURES, VIDEO, & GALLERY

Your tablet is equipped with a single front facing .3 megapixel camera with a 3x digital zoom. It can be used to capture pictures and video, which are then stored in the tablet's Gallery. The camera is also used when running video chat software, such as Skype or Hangouts.


Gallery is where all of your snapshots, videos, and downloaded images are saved. As the gallery is populated with images and files, they will automatically be divided into Albums. For example, "Screenshot" is an album that contains all of the screenshots you have taken. You can access the Gallery by pressing the Gallery icon on the home screen.

Taking Snapshots

- » Tap the Camera icon from the apps menu or screen.
- » When you are ready, tap  to capture the image.

Taking Video


The camera is set to take still images by default, and must switch modes to take video.

- » While in camera mode, tap the Camera icon once, then select the Video icon.
- » When you are ready, tap  to begin recording video, and tap once more to stop recording video.




While in either camera mode you can freely zoom in or out by pinching the screen the same way you can in other tablet applications.

Adjusting Camera Settings

The camera has different settings that may affect the outcome or quality of the pictures and video you capture. To change the Exposure, Lighting, and Storage settings tap  from the icons on the right of the screen while the camera is active and choose the settings you want.

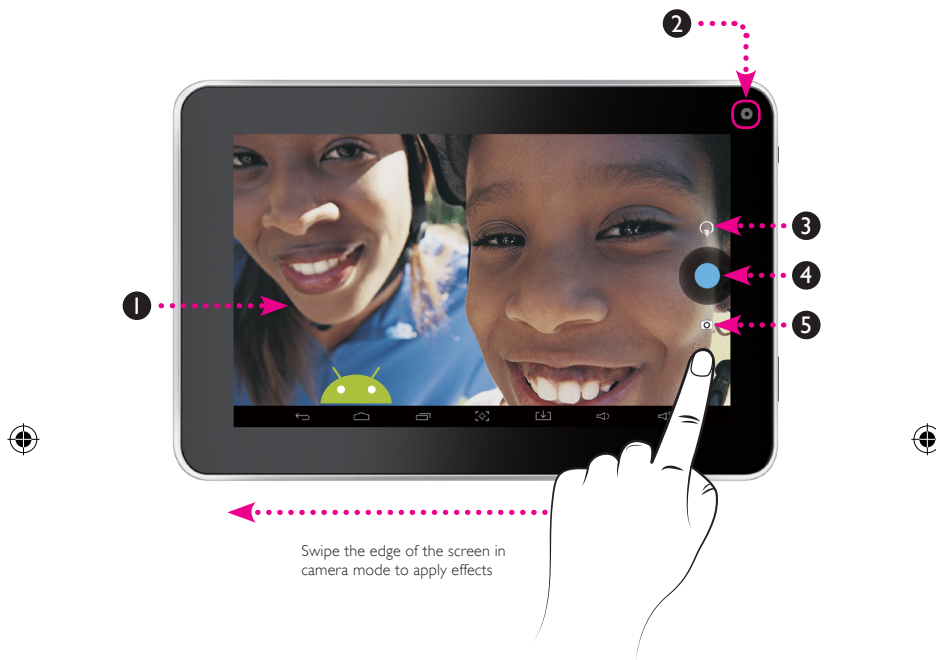
Applying Effects to Pictures

The tablet has different built in effects that can alter an image after it has been captured. These effects can be accessed while in Camera mode by swiping left above or below the main camera controls, or by selecting an image from the Gallery and tapping .



Camera

USING THE CAMERA



- | | |
|--------------------|-------------------------|
| 1. Camera Screen | 4. Capture Image/Video |
| 2. Camera | 5. Camera Mode Selector |
| 3. Camera Settings | |

Company Information

CUSTOMER SUPPORT

Contact Information

Website: www.zekitablet.com

Email Support: prodinfo@dpiinc.com

Email Parts: partsinfo@dpiinc.com

Phone Support: 1-888-999-4215

Warranty Information

For Warranty Information and the most up-to-date version of this User's Guide, go to: www.zekitablet.com

International Support

To download this User's Guide in English, Spanish, or French, or to get answers to frequently asked questions, visit the support section at: www.zeki-tablet.com

Para descargar este Manual del Usuario en inglés, español y francés, o para obtener respuestas a preguntas frecuentes, visite la sección de apoyo en: www.zeki-tablet.com

Pour télécharger ce guide de l'utilisateur en anglais, espagnol ou français, ou pour obtenir des réponses à des questions fréquemment posées, consultez la rubrique d'assistance sur: www.zekitablet.com

Green Initiative

Our environmental commitment to 'Protect for Today and Sustain for Tomorrow'

On a continual basis DPI, Inc. is making efforts to sustain the environment and improve the recyclability of its products and packaging.

Focusing on "protecting for today and sustaining for tomorrow" DPI, Inc. has committed to reducing packaging size, increasing the usage of recyclable plastics, and ensuring that packaging and manuals are made with up to 85% recycled material. In addition to material consideration, DPI, Inc. has also focused on the finer details that positively impact the environment such as employing the usage of soy-based inks.

DPI, Inc. also ensures that the factories that produce the company's wide variety of consumer electronics adhere to environmentally friendly air and water restrictions. This is yet another example that every step of the way DPI, Inc. is making efforts to lessen any impact on the environment.

DPI, Inc. also engages in conversations with Energy Star in order to ensure that the consumer electronics being produced meet high standards of energy efficiency. The ultimate goal is keeping energy costs for consumers low while providing quality, feature-rich products.



Android, Google and other marks are trademarks of Google Inc.
The Android robot is reproduced or modified from work created and shared by Google and used according to terms described in the Creative Commons 3.0 Attribution License.
Copyright © 2014 Digital Products International (DPI, Inc.) | All other trademarks appearing herein are the property of their respective owners. Specifications are subject to change without notice

FCC STATEMENT :

This device complies with Part 15 of the FCC Rules. Operation is subject to the following two conditions:

- (1) This device may not cause harmful interference, and
- (2) This device must accept any interference received, including interference that may cause undesired operation.

Warning: Changes or modifications not expressly approved by the party responsible for compliance could void the user's authority to operate the equipment.

NOTE: This equipment has been tested and found to comply with the limits for a Class B digital device, pursuant to Part 15 of the FCC Rules. These limits are designed to provide reasonable protection against harmful interference in a residential installation.

This equipment generates uses and can radiate radio frequency energy and, if not installed and used in accordance with the instructions, may cause harmful interference to radio communications. However, there is no guarantee that interference will not occur in a particular installation. If this equipment does cause harmful interference to radio or television reception, which can be determined by turning the equipment off and on, the user is encouraged to try to correct the interference by one or more of the following measures:

- Reorient or relocate the receiving antenna.
- Increase the separation between the equipment and receiver.
- Connect the equipment into an outlet on a circuit different from that to which the receiver is connected.
- Consult the dealer or an experienced radio/TV technician for help.

RF warning statement:

The device has been evaluated to meet general RF exposure requirement. The device can be used in portable exposure condition without restriction.