



## QUICK START GUIDE

# DCS-559 ROUTER

Embedded Cellular Router with 802.11

### FCC Statement:

**WARNING:** Changes or modifications to this unit not expressly approved by the party responsible for compliance could void the user's authority to operate the equipment.

**NOTE:** This equipment has been tested and found to comply with the limits for a Class B digital device, pursuant to Part 15 of the FCC Rules. These limits are designed to provide reasonable protection against harmful interference in a residential installation. This equipment generates, uses and can radiate radio frequency energy and, if not installed and used in accordance with the instructions, may cause harmful interference to radio communications.

However, there is no guarantee that interference will not occur in a particular installation. If this equipment does cause harmful interference to radio or television reception, which can be determined by turning the equipment off and on, the user is encouraged to try to correct the interference by one or more of the following measures:

- ☐ Reorient or relocate the receiving antenna.
- ☐ Increase the separation between the equipment and receiver.
- ☐ Connect the equipment into an outlet on a circuit different from that to which the receiver is connected.
- ☐ Consult the dealer or an experienced radio/TV technician for help.

FCC/IC RF Radiation Exposure Statement Caution: To maintain compliance with the FCC's RF exposure guidelines, place the product at least 20cm from nearby persons.



Direct Communication Solutions  
10675 Treana Street, Suite 103  
San Diego, CA 92131

For Technical Assistance  
Email: support@dcsbusiness.com

## Package Contents

- DCS-559 Embedded Cellular Router with 802.11
- Power adapter
- RJ45 Ethernet cable
- Cellular Antenna
- Wireless Antenna
- Quick Start Guide

## Quick Router Setup

**Step 1:** Connect the Cellular Antenna and Wireless Antenna to the DCS-559 Router.

**Step 2:** Connect the power adapter to the DCS-559 Router.

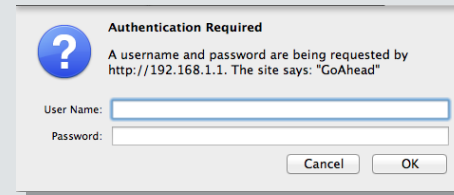
**Step 3:** Connecting to a PC using a RJ45 Ethernet cable from the LAN port of the DCS-559 to a PC.

## Web Management

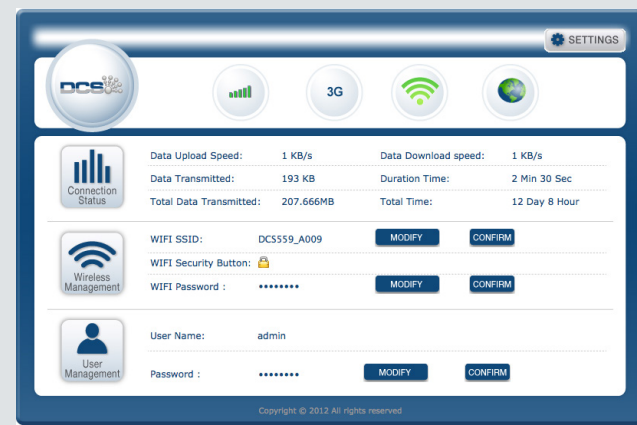
**Step 1:** Open a web browser and type **http://192.168.1.1** in the address bar and press Enter.



**Step 2:** Configure connection popup by typing User name: **admin** and Password: **password**.





**Step 3:** DCS-559 Web User Interface



#### Step 4: Modem activation

##### Have an active data account:

If you have an active account with a network carrier, please click on  to access the **Access Point Status** page. Under **Internet Connection** click on  to start an active connection to the network. Then your current connection status information on the network will be displayed.

**Note:** Network mode will display Inactive until modem has completed hands-free activation process and your device WAN IP will be displayed.

## Restoring Factory Defaults

**Warning:** Restoring the router to factory default settings will result in deleting any saved router configuration settings, all settings will be lost.

Restoring factory default setting on the DCS-559 can be done in two ways:

**Option 1:** While the router is powered on, press the RESET button 5-10 seconds to reset to factory default settings.

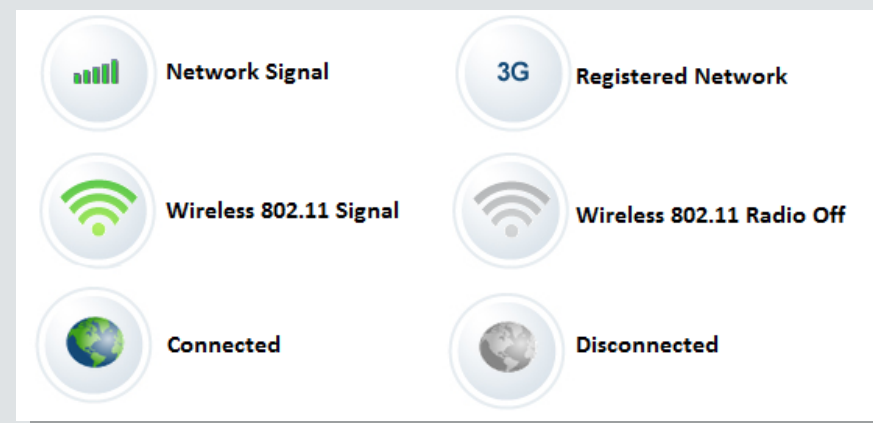
**Option 2:** Using the DCS-559 Web User Interface management portal, click Settings button and click Admin tab, and select Settings. Locate Load Factory Defaults and click Load Default to recover the configuration to factory default settings.

**Caution:** DCS-559 Router will disconnect from 3G network connection and will automatically reboot.





## Network Information

Use the DCS-559 Web user interface to review network information status, click Settings tab, select Admin, then select Status to view system status.



**Connection Status:** Displays the current networks upload and download speeds.

**Wireless Management:** Displays the current router wireless 802.11 name.

To modify, click  and then  for the settings to take effect.

**Default Wireless SSID:** DCS559\_xxxx [XXXX represents the last 4 values of MAC address].

### 802.11 Wireless Security:





This icon means the 802.11 network is secured.



This icon means the 802.11 wireless connections are unsecured.

To secure your 802.11 wireless connections, click the icon and generate your own password.

### User Management Password:

The default password is admin. You can manually modify the login password by clicking the  button on the home page. Click  once you have modified your password.

**System Info:** Displays router system information.

**Internet Connection:** Displays the wide area connection status, connection type and network address information of the cellular network.

**Local Network:** Displays the local area connection status and network address information.