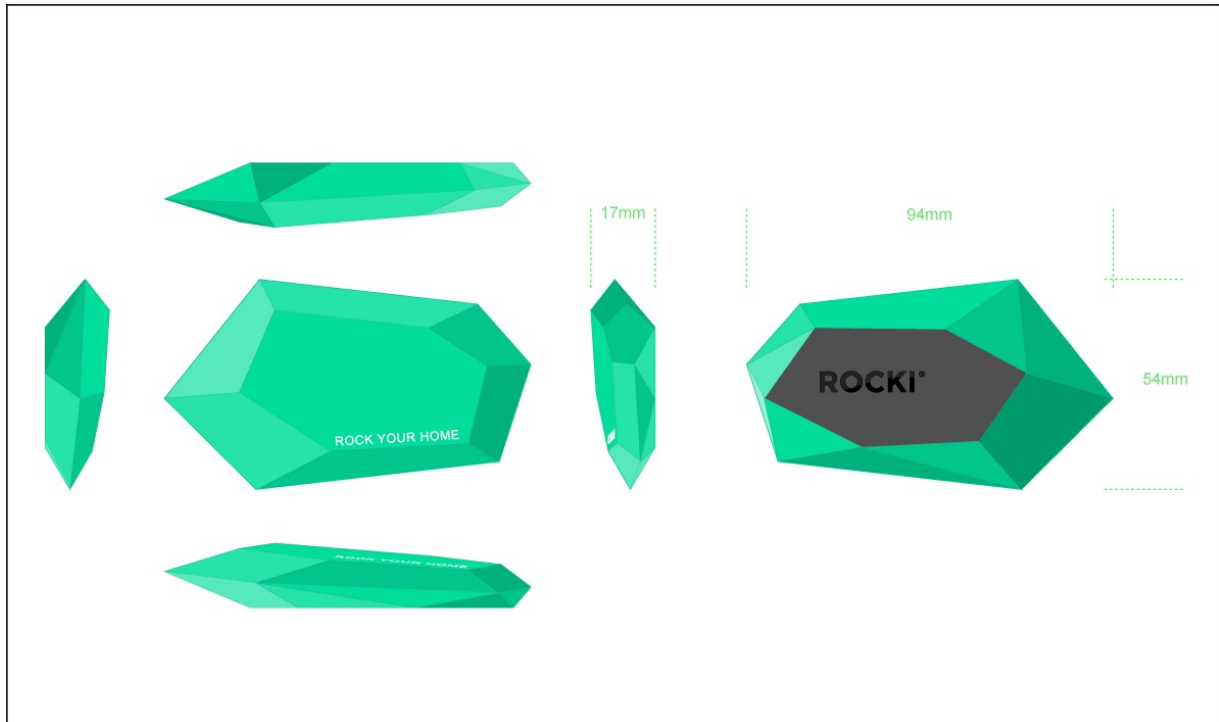


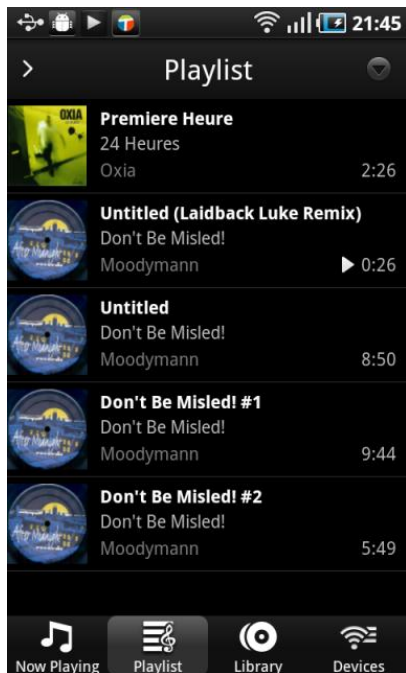
USER MANUAL

What is the Rocki?



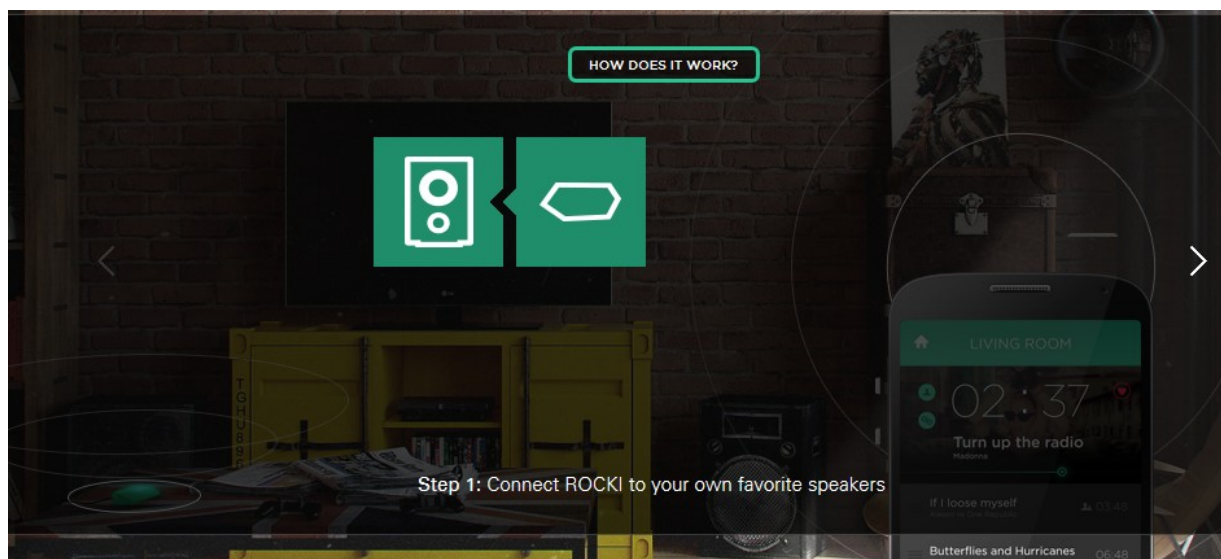
How To Configure?

1. Connect the micro USB interface to power on
2. Scan the SSID , begin with “GMR_XXX_XXXX” , connect to it, password is “87654321”
3. Open IE browser, type “192.168.0.1”, set your router SSID and password.
4. Power off and restart
5. Waiting for the voice promotion “stm connected successful”.
6. Now the device has run on your local network, then you can download the firmware BubbleUpnp from Google market to your smartphone
7. Intall BubbleUpnp and connect to your local network.
8. Run BubbleUpnp, select any songs you like from “Library” TAB and select the Rocki device from “DEVICES” TAB to read play.

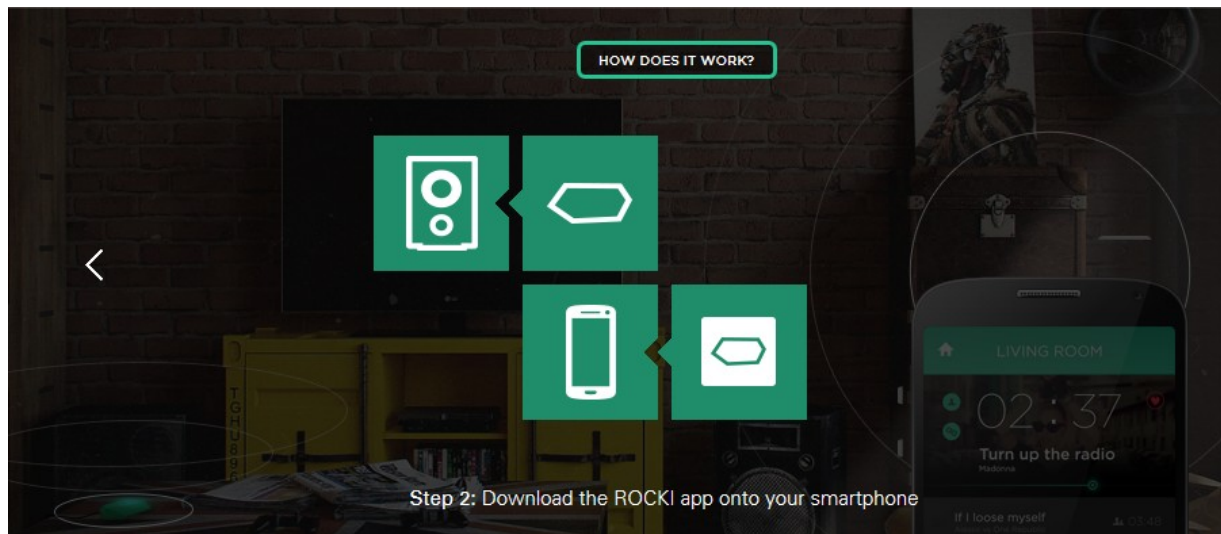


How it works?

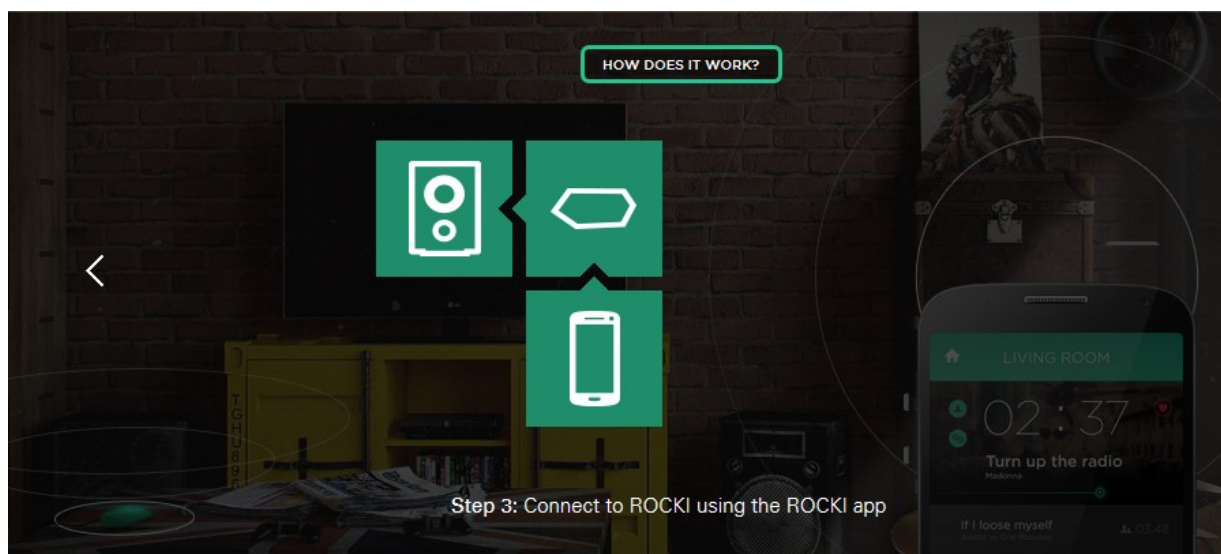
Step1: Connect ROCKI to your own favorite speakers.



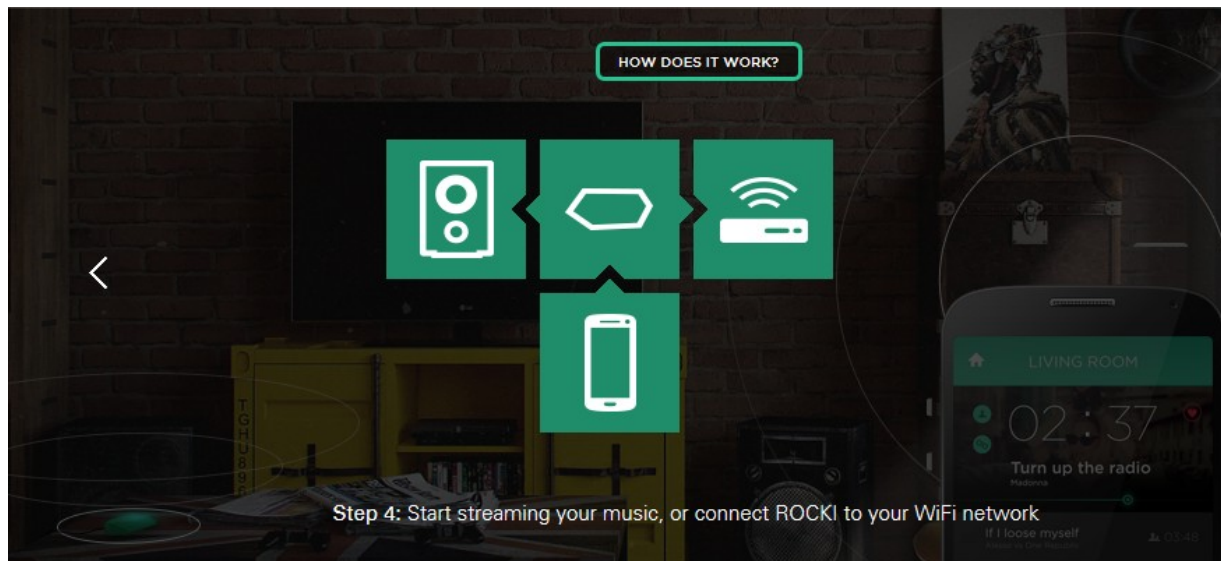
Step2: Download the ROCKI app onto your smartphone.



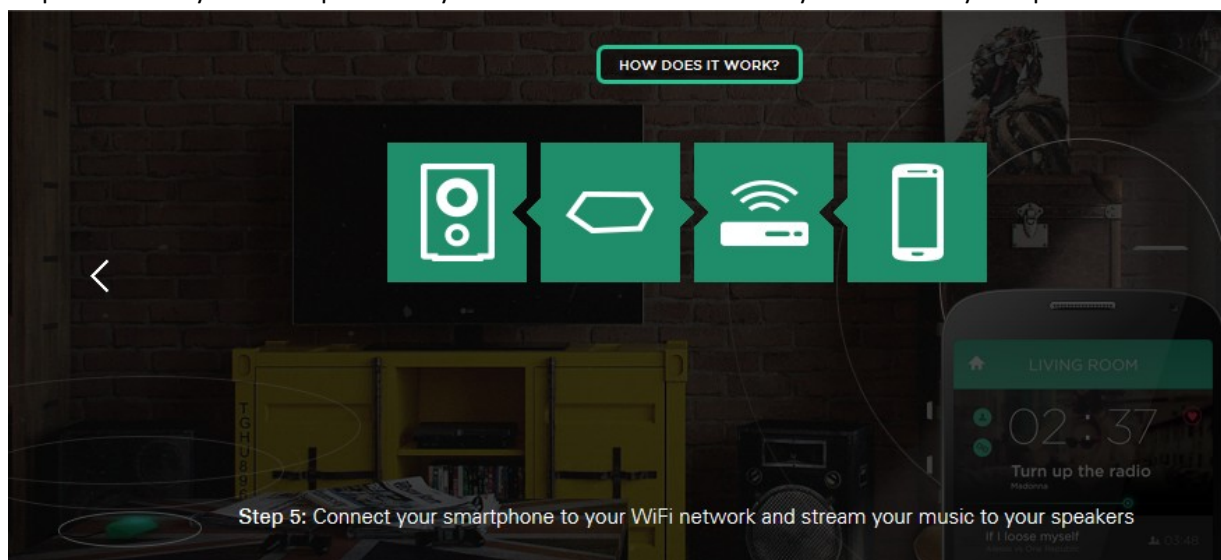
Step3: Connect to ROCKI using the Bubble Upnp(can be downloaded from Google Play market)



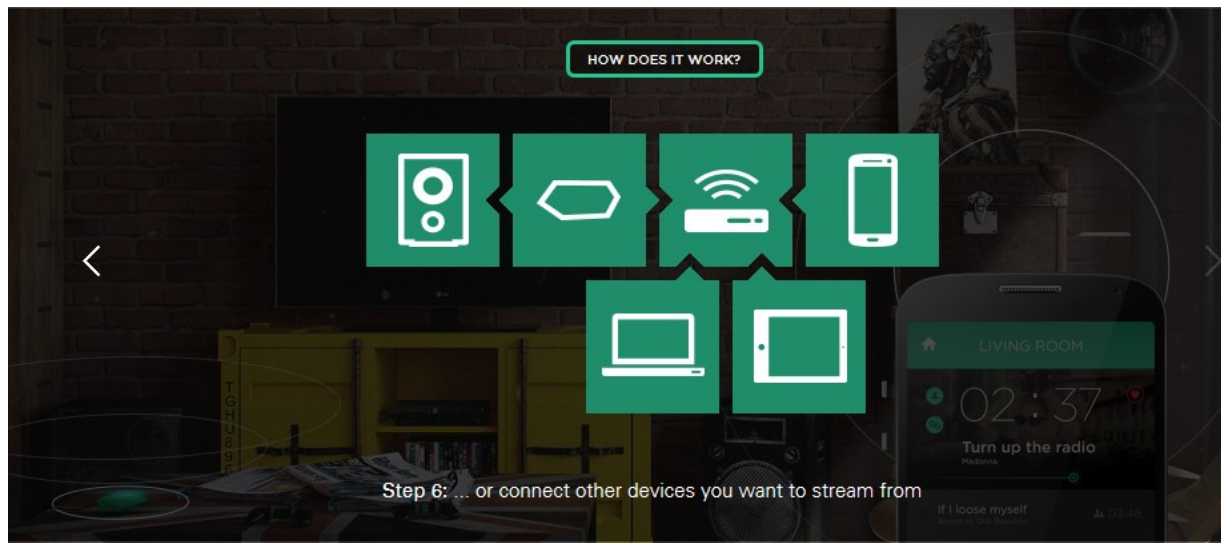
Step 4: Start streaming your music, or connect ROCKI to your WiFi network.



Step 5: Connect your smartphone to your WiFi network and stream your music to your speakers.



Step 6: .. or Connect other devices you want to stream from.



The USB connector is used for charging only.

More information, please visit our website <http://www.myrocki.com>

FCC Statement

This equipment has been tested and found to comply with the limits for a Class B digital device, pursuant to Part 15 of the FCC Rules. These limits are designed to provide reasonable protection against harmful interference in a residential installation. This equipment generates uses and can radiate radio frequency energy and, if not installed and used in accordance with the instructions, may cause harmful interference to radio communications. However, there is no guarantee that interference will not occur in a particular installation. If this equipment does cause harmful interference to radio or television reception, which can be determined by turning the equipment off and on, the user is encouraged to try to correct the interference by one or more of the following measures:

- Reorient or relocate the receiving antenna.
- Increase the separation between the equipment and receiver.
- Connect the equipment into an outlet on a circuit different from that to which the receiver is connected.
- Consult the dealer or an experienced radio/TV technician for help.

This device complies with part 15 of the FCC Rules. Operation is subject to the following two conditions:(1) This device may not cause harmful interference, and (2) this device must accept any interference received, including interference that may cause undesired operation.

Changes or modifications not expressly approved by the party responsible for compliance could void the user's authority to operate the equipment.