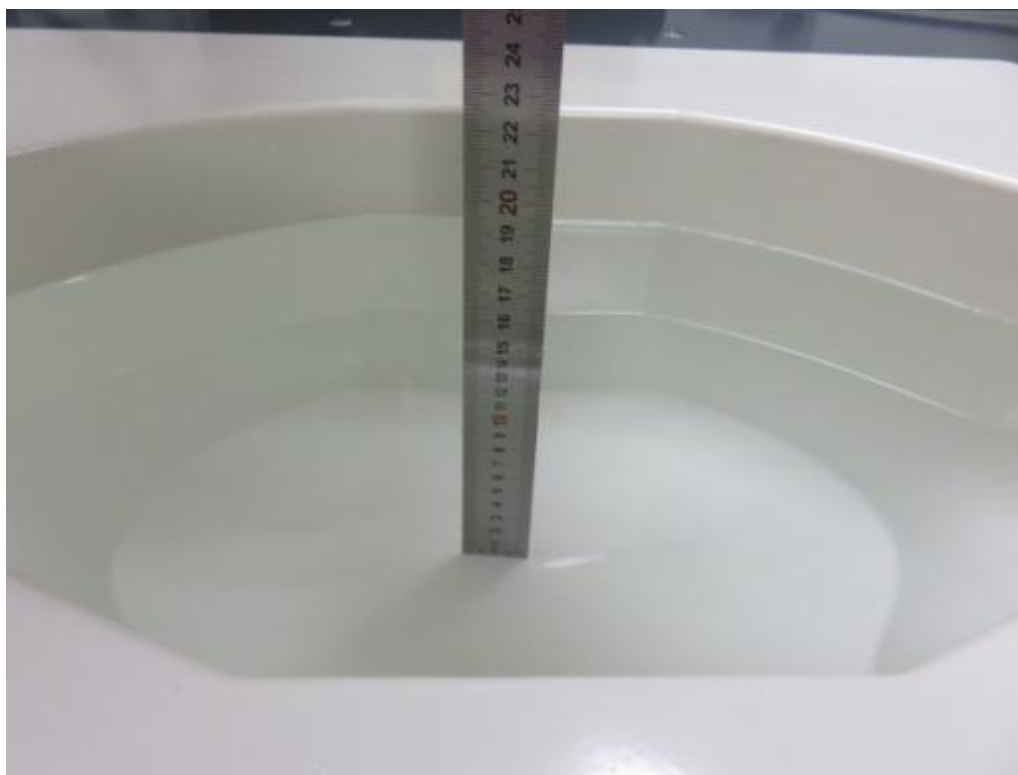
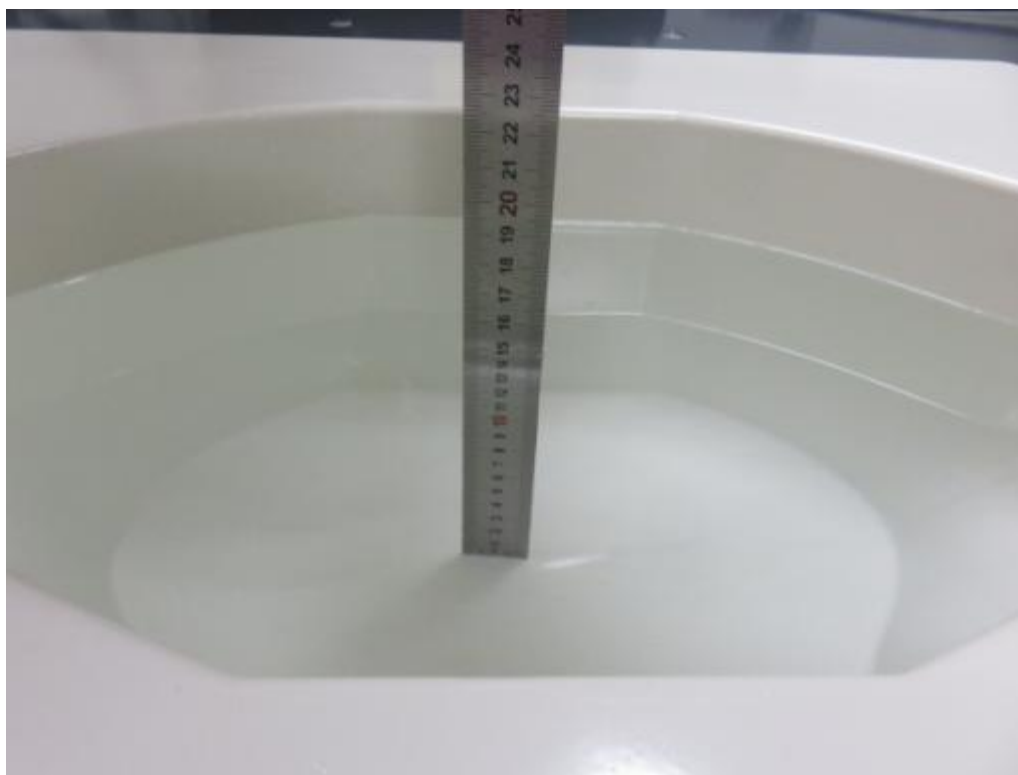


6. EUT TEST PHOTOGRAPHS

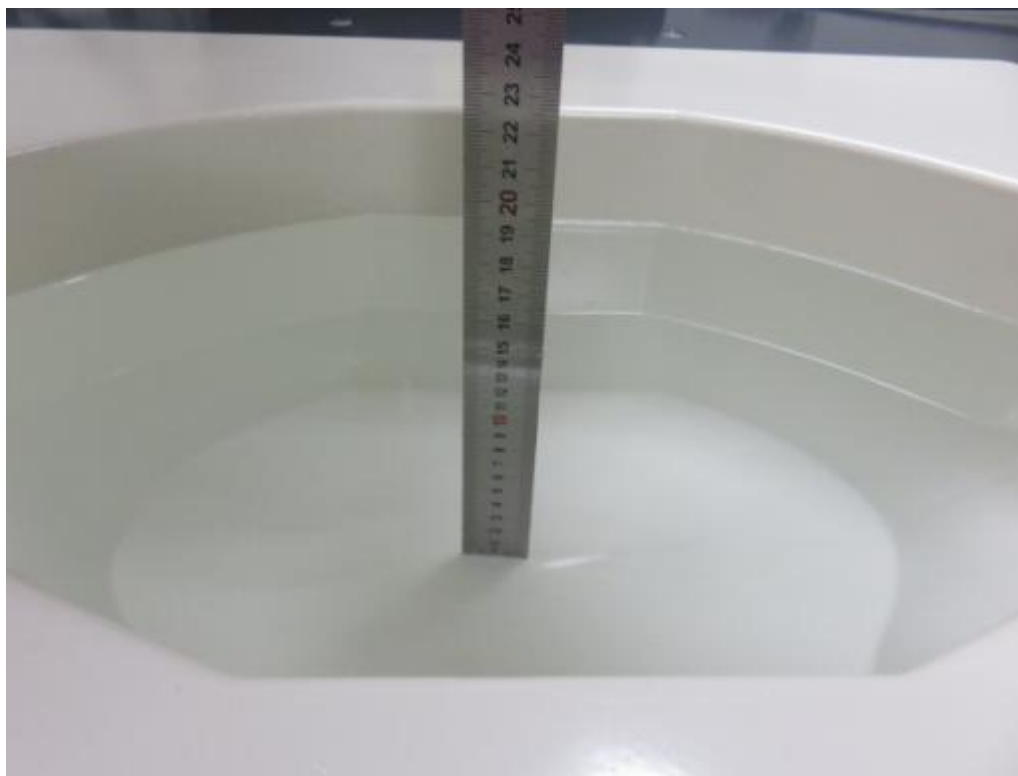
6.1 Photograph of liquid depth



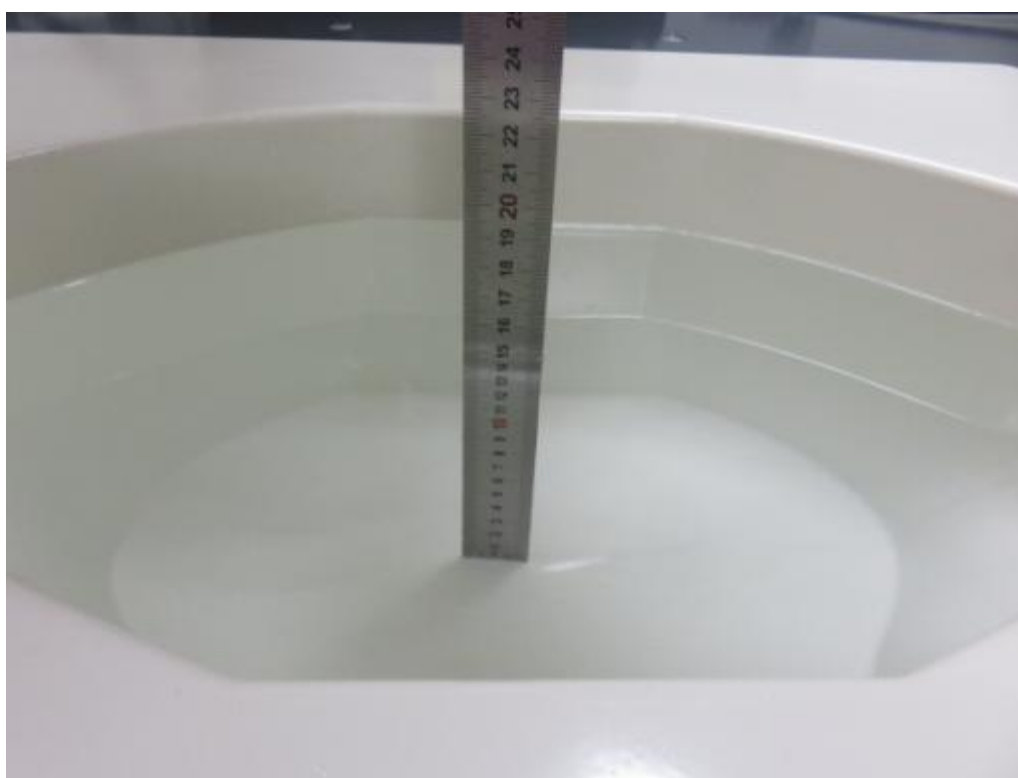
Photograph of the depth in the Body Phantom (750MHz, 15.1cm depth)



Photograph of the depth in the Body Phantom (835MHz, 15.0cm depth)



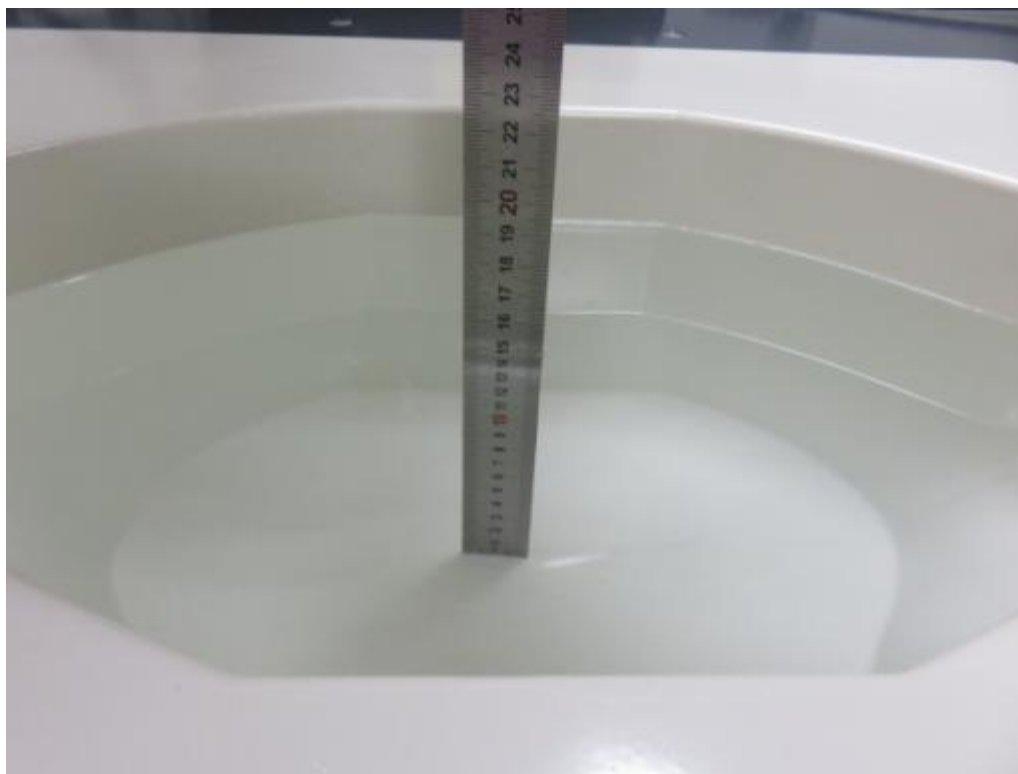
Photograph of the depth in the Body Phantom (1800MHz, 15.2cm depth)



Photograph of the depth in the Body Phantom (1900MHz, 15.4cm depth)



Photograph of the depth in the Body Phantom (2450MHz, 15.1cm depth)



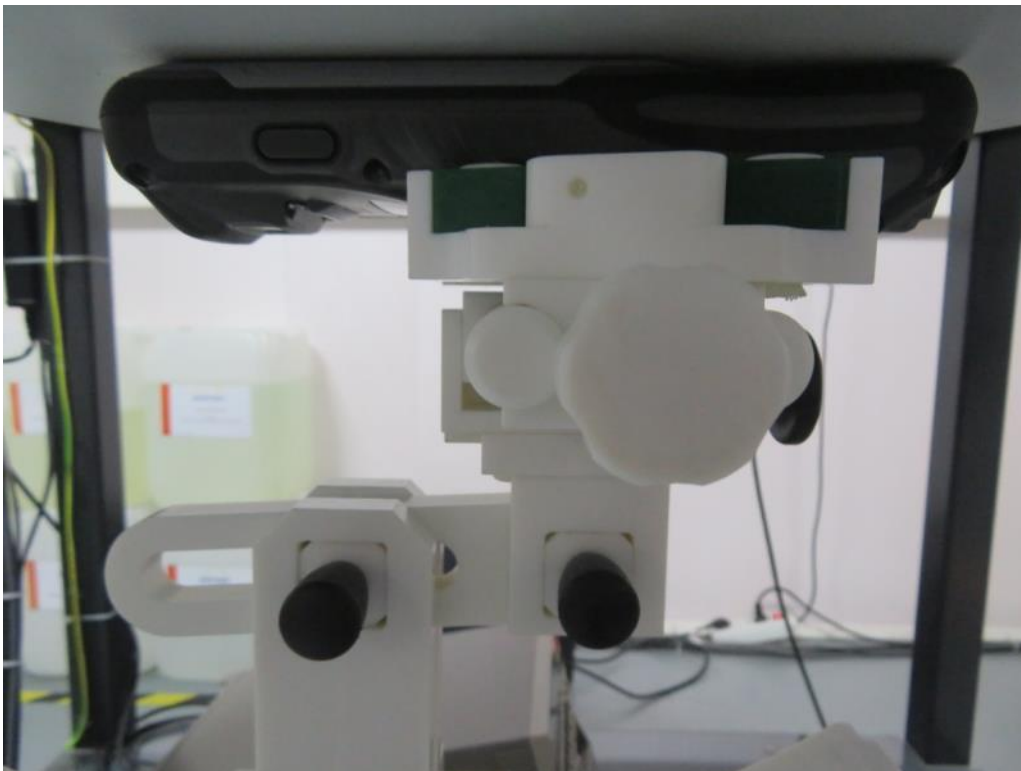
Photograph of the depth in the Body Phantom (2600MHz, 15.3cm depth)

6.2 Photograph of the Test

0mm body-worn Back Side Setup Photo (hotspot)



0mm body-worn Front Side Setup Photo (hotspot)



0mm body-worn Left Side Setup Photo (hotspot)



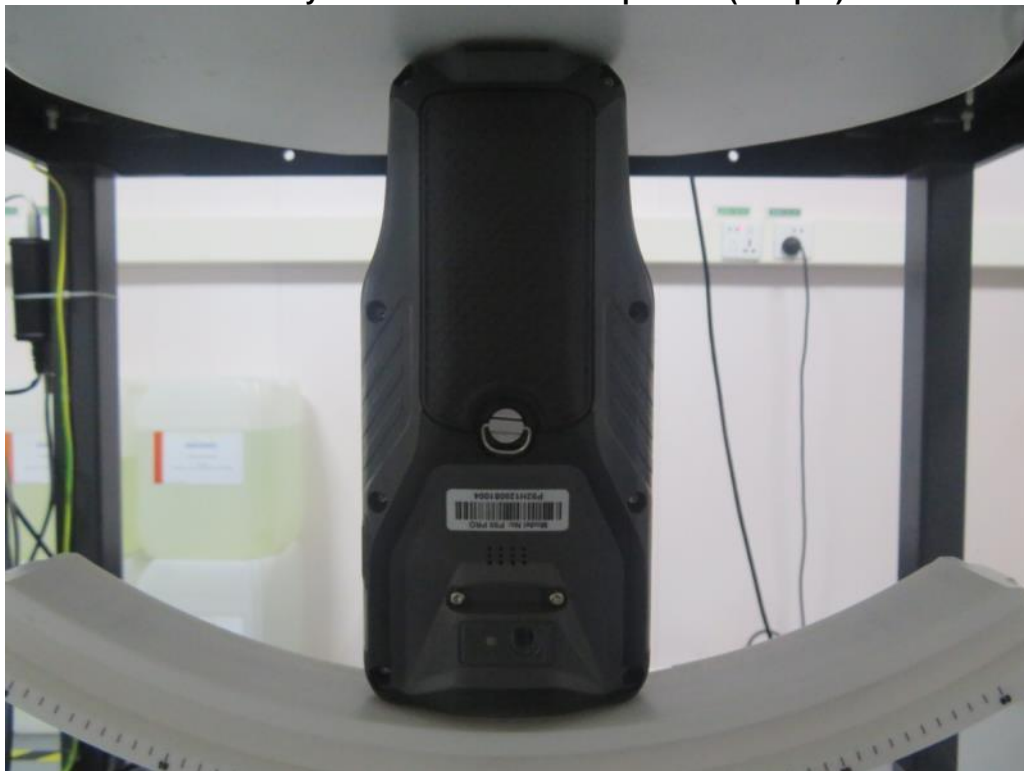
0mm body-worn Right Side Setup Photo (hotspot)



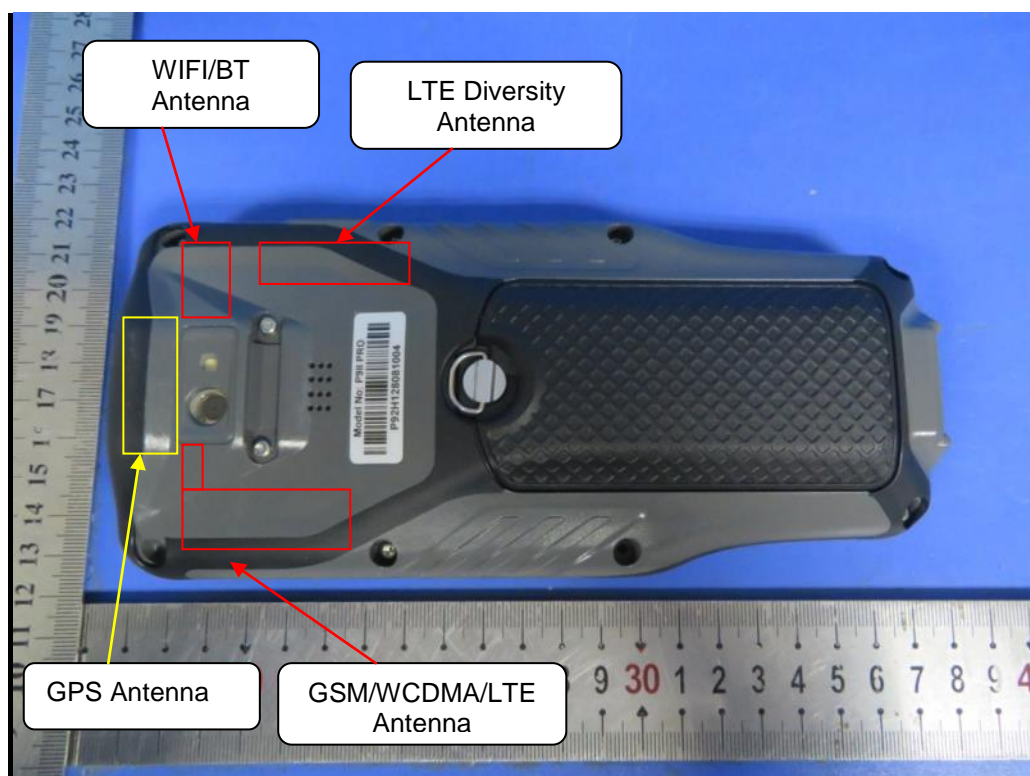
0mm body-worn Top Side Setup Photo (hotspot)



0mm body-worn Bottom Side Setup Photo (hotspot)



7. EUT Photographs



.....The End of Test Report.....