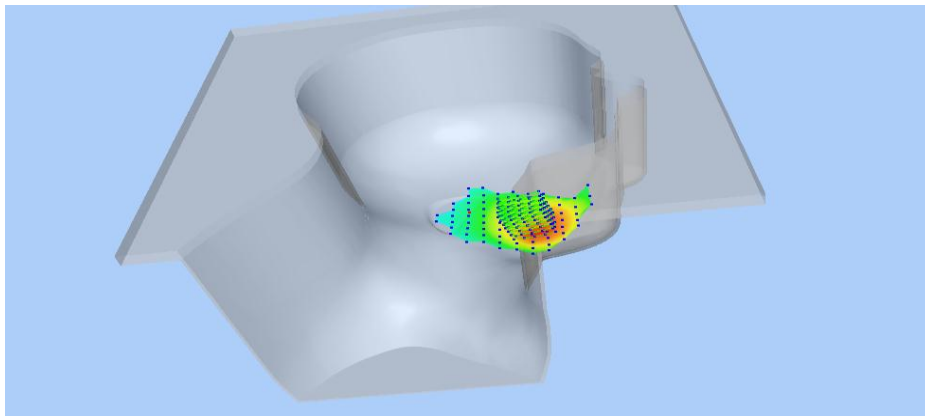


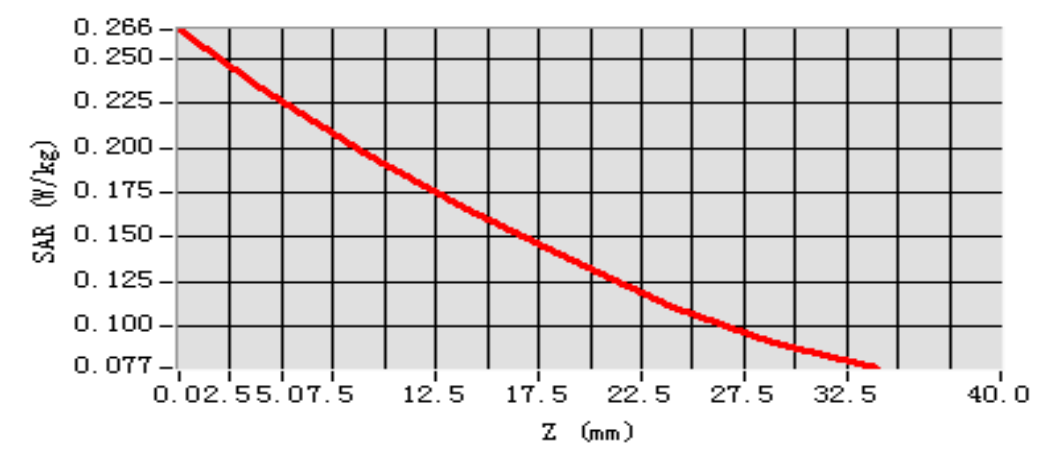
MEAS. 1 Left Head with Cheek on Middle Channel in LTE Band 12 mode

with 1RB

Test Date:	16/5/2016
Measurement duration:	9 minutes 12 seconds
Signal:	LTE, f=707.5 MHz, Duty Cycle: 1:1.0
Liquid Parameters:	Permittivity: 43.28; Conductivity: 0.86 S/m
Test condition:	Ambient Temperature: 21.8°C, Liquid Temperature: 21.2°C
Probe:	SN 34/15 SSE2 EPGO265, ConvF: 1.81
Area Scan:	sam_direct_droit2_surf12mm.txt, h= 5.00 mm
Zoom Scan:	5x5x7,dx=8mm, dy=8mm, dz=5mm,Complete
Maximum location:	X=-48.000000, Y=-36.000000
SAR 10g (W/Kg):	0.181024
SAR 1g (W/Kg):	0.227564
Power drift (%):	-0.71
3D screen shot	



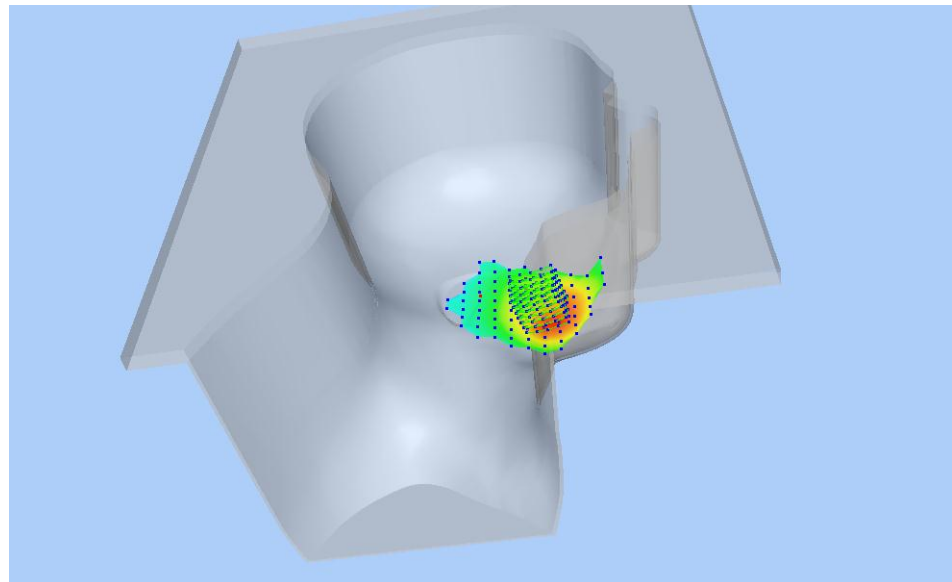
Z Axis Scan



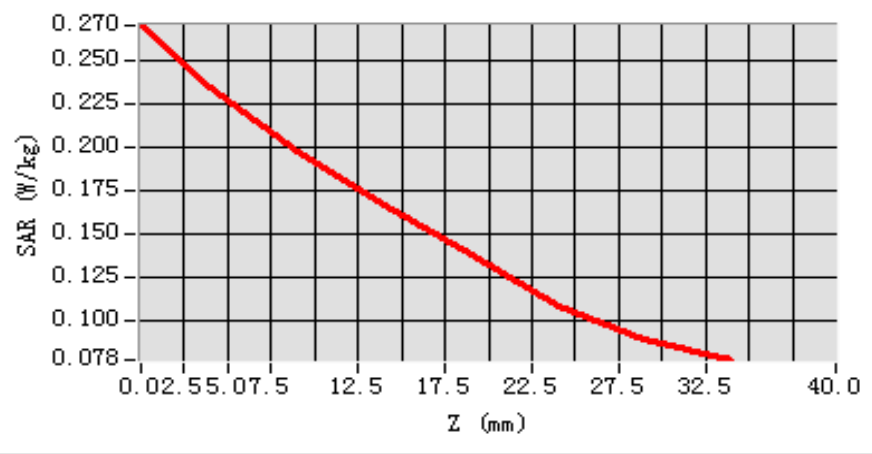
MEAS. 2 Left Head with Cheek on Middle Channel in LTE Band 12 mode

with 50%RB

Test Date:	16/5/2016
Measurement duration:	9 minutes 12 seconds
Signal:	LTE, f=707.5 MHz, Duty Cycle: 1:1.0
Liquid Parameters:	Permittivity: 43.28; Conductivity: 0.86 S/m
Test condition:	Ambient Temperature: 21.8°C, Liquid Temperature: 21.2°C
Probe:	SN 34/15 SSE2 EPGO265, ConvF: 1.81
Area Scan:	sam_direct_droit2_surf12mm.txt, h= 5.00 mm
Zoom Scan:	5x5x7,dx=8mm, dy=8mm, dz=5mm,Complete
Maximum location:	X=-48.000000, Y=-36.000000
SAR 10g (W/Kg):	0.181691
SAR 1g (W/Kg):	0.229169
Power drift (%):	-0.36
3D screen shot	



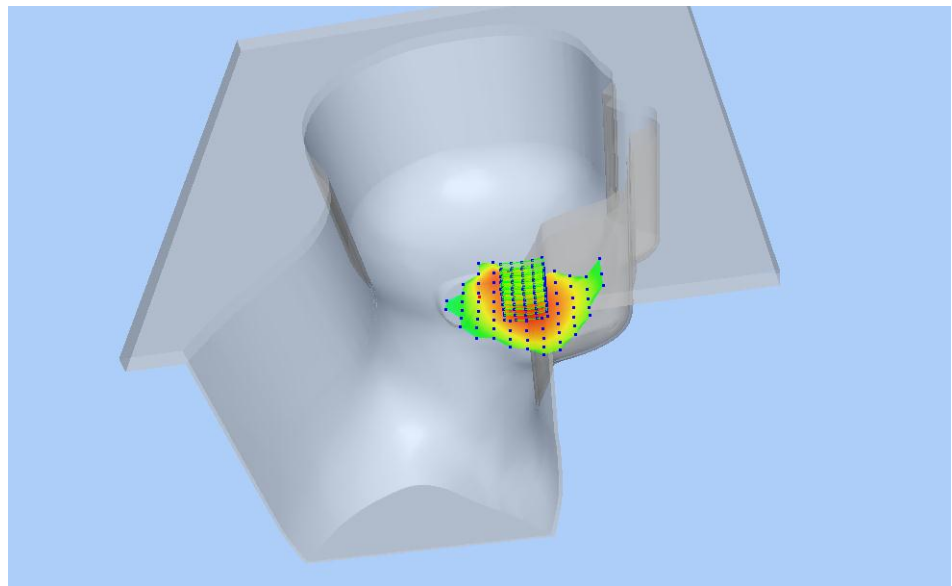
Z Axis Scan



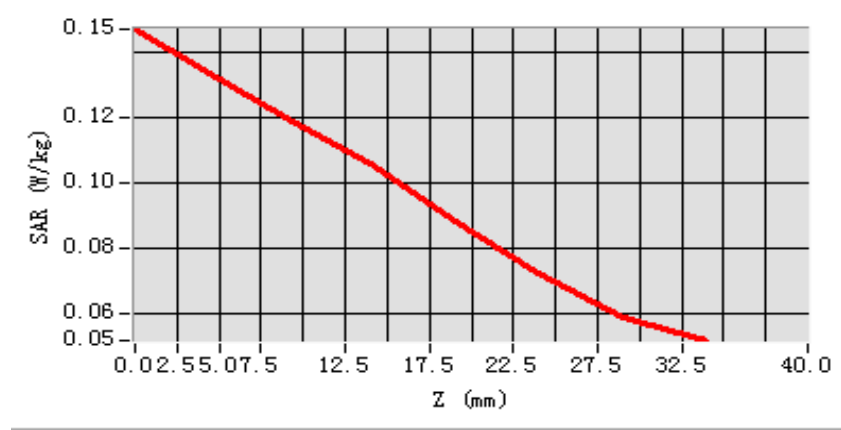
MEAS. 3 Left Head with Tilt on Middle Channel in LTE Band 12 mode

with 1RB

Test Date:	16/5/2016
Measurement duration:	8 minutes 19 seconds
Signal:	LTE, f=707.5 MHz, Duty Cycle: 1:1.0
Liquid Parameters:	Permittivity: 43.28; Conductivity: 0.86 S/m
Test condition:	Ambient Temperature: 21.8°C, Liquid Temperature: 21.2°C
Probe:	SN 34/15 SSE2 EPGO265, ConvF: 1.81
Area Scan:	sam_direct_droit2_surf12mm.txt, h= 5.00 mm
Zoom Scan:	5x5x7,dx=8mm, dy=8mm, dz=5mm,Complete
Maximum location:	X=-36.000000, Y=-24.000000
SAR 10g (W/Kg):	0.110085
SAR 1g (W/Kg):	0.132723
Power drift (%):	-0.03
3D screen shot	



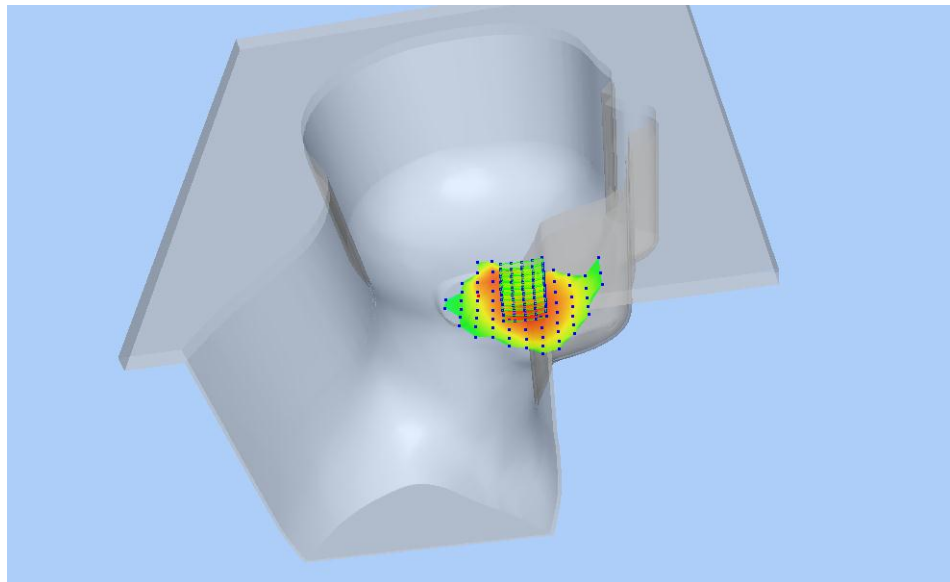
Z Axis Scan



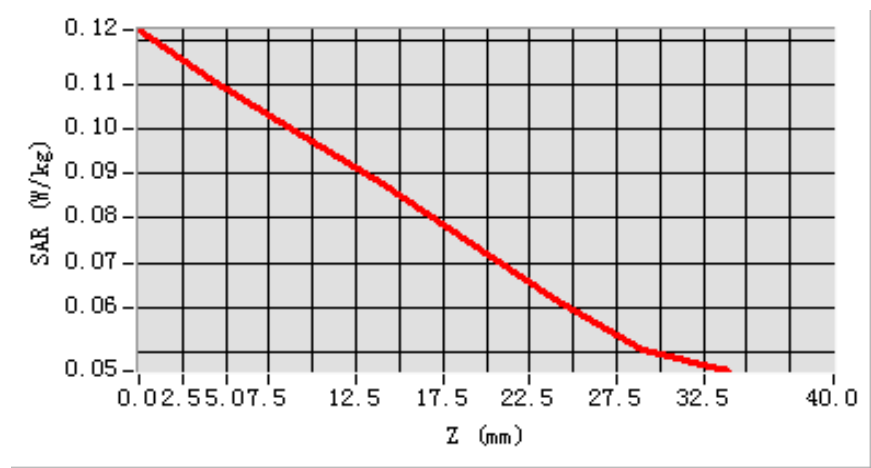
MEAS. 4 Left Head with Tilt on Middle Channel in LTE Band 12 mode

with 50%RB

Test Date:	16/5/2016
Measurement duration:	8 minutes 23 seconds
Signal:	LTE, f=707.5 MHz, Duty Cycle: 1:1.0
Liquid Parameters:	Permittivity: 43.28; Conductivity: 0.86 S/m
Test condition:	Ambient Temperature: 21.8°C, Liquid Temperature: 21.2°C
Probe:	SN 34/15 SSE2 EPGO265, ConvF: 1.81
Area Scan:	sam_direct_droit2_surf12mm.txt, h= 5.00 mm
Zoom Scan:	5x5x7,dx=8mm, dy=8mm, dz=5mm,Complete
Maximum location:	X=-36.000000, Y=-24.000000
SAR 10g (W/Kg):	0.091848
SAR 1g (W/Kg):	0.110240
Power drift (%):	-0.70
3D screen shot	



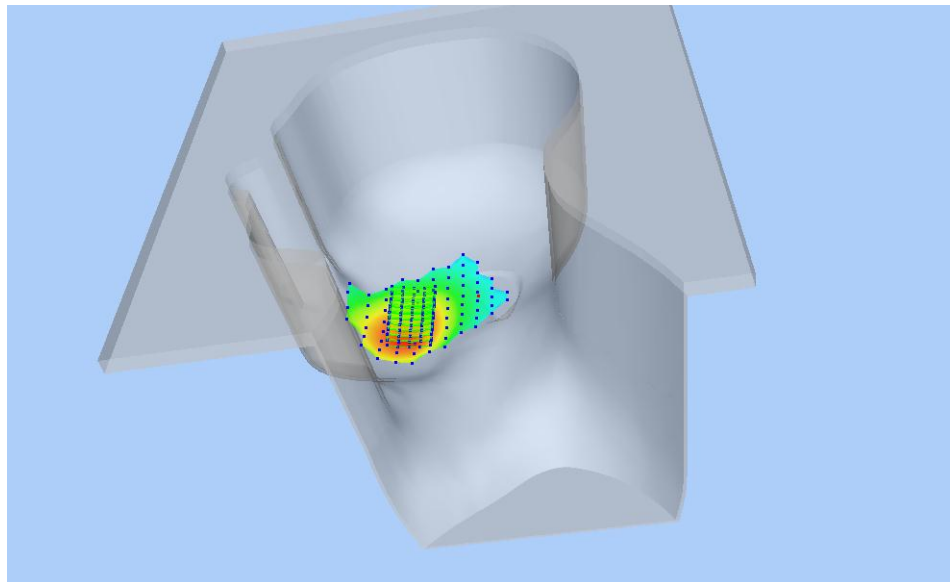
Z Axis Scan



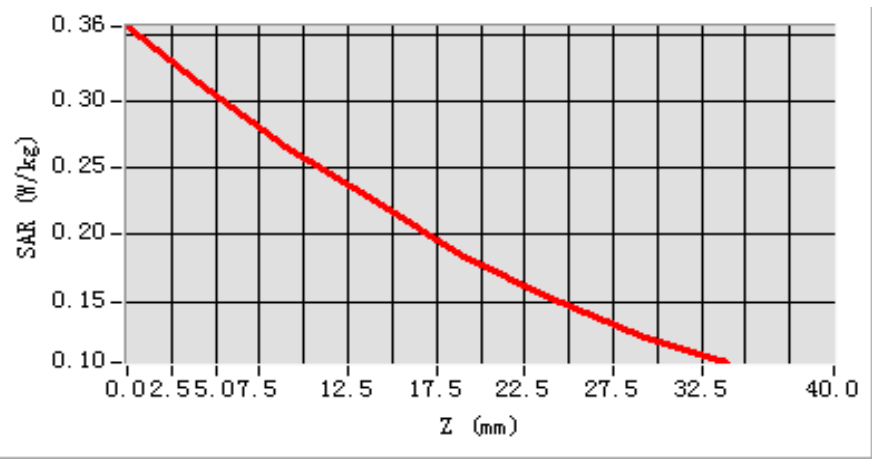
MEAS. 5 Right Head with Cheek on Middle Channel in LTE Band 12

mode with 1RB

Test Date:	16/5/2016
Measurement duration:	9 minutes 23 seconds
Signal:	LTE, f=707.5 MHz, Duty Cycle: 1:1.0
Liquid Parameters:	Permittivity: 43.28; Conductivity: 0.86 S/m
Test condition:	Ambient Temperature: 21.8°C, Liquid Temperature: 21.2°C
Probe:	SN 34/15 SSE2 EPGO265, ConvF: 1.81
Area Scan:	sam_direct_droit2_surf12mm.txt, h= 5.00 mm
Zoom Scan:	5x5x7,dx=8mm, dy=8mm, dz=5mm,Complete
Maximum location:	X=-48.000000, Y=-36.000000
SAR 10g (W/Kg):	0.243508
SAR 1g (W/Kg):	0.305293
Power drift (%):	-0.09
3D screen shot	



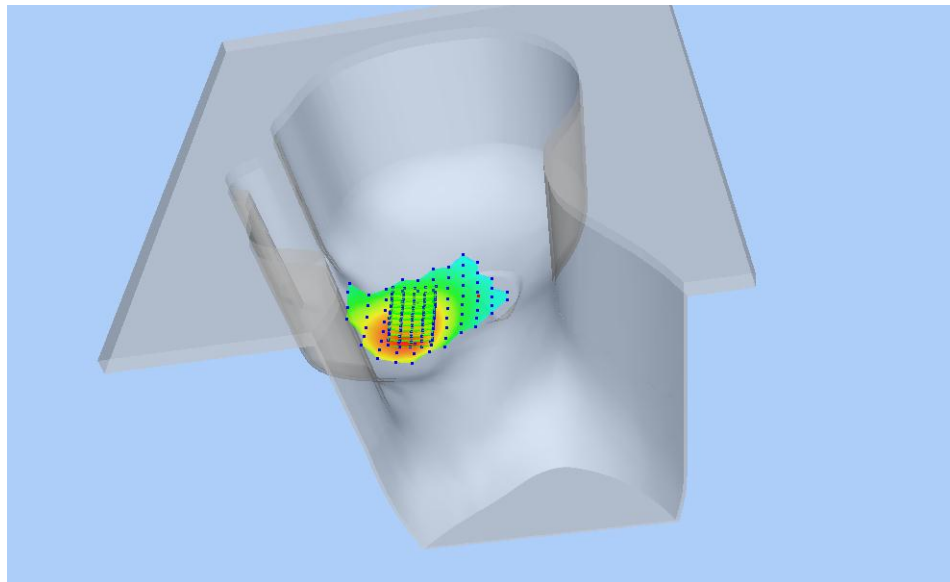
Z Axis Scan



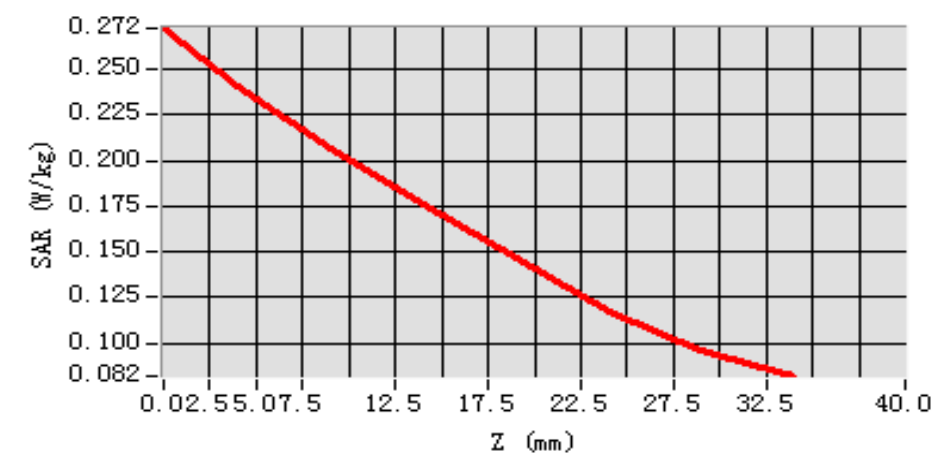
MEAS. 6 Right Head with Cheek on Middle Channel in LTE Band 12

mode with 50%RB

Test Date:	16/5/2016
Measurement duration:	9 minutes 25 seconds
Signal:	LTE, f=707.5 MHz, Duty Cycle: 1:1.0
Liquid Parameters:	Permittivity: 43.28; Conductivity: 0.86 S/m
Test condition:	Ambient Temperature: 21.8°C, Liquid Temperature: 21.2°C
Probe:	SN 34/15 SSE2 EPGO265, ConvF: 1.81
Area Scan:	sam_direct_droit2_surf12mm.txt, h= 5.00 mm
Zoom Scan:	5x5x7,dx=8mm, dy=8mm, dz=5mm,Complete
Maximum location:	X=-48.000000, Y=-36.000000
SAR 10g (W/Kg):	0.189871
SAR 1g (W/Kg):	0.237138
Power drift (%):	-0.68
3D screen shot	



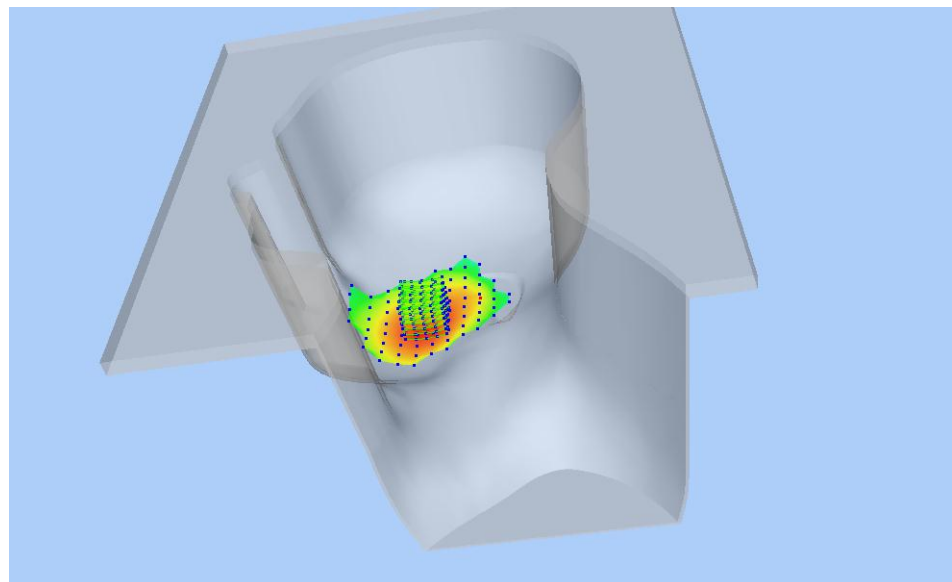
Z Axis Scan



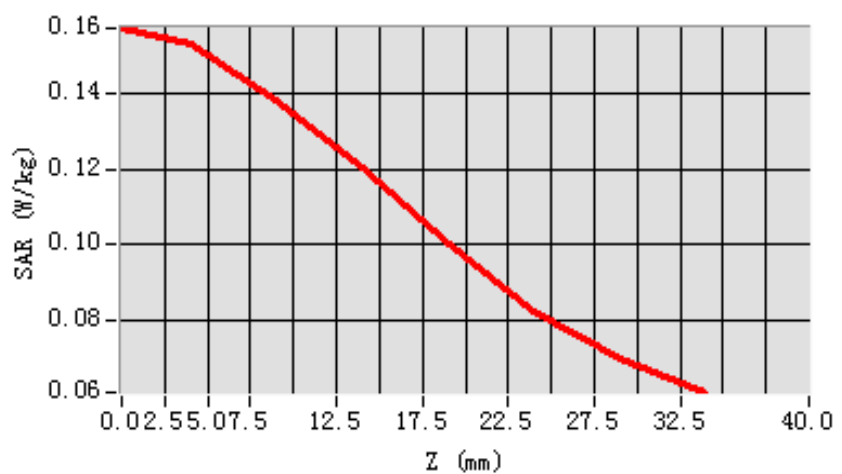
MEAS. 7 Right Head with Tilt on Middle Channel in LTE Band 12 mode

with 1RB

Test Date:	16/5/2016
Measurement duration:	8 minutes 45 seconds
Signal:	LTE, f=707.5 MHz, Duty Cycle: 1:1.0
Liquid Parameters:	Permittivity: 43.28; Conductivity: 0.86 S/m
Test condition:	Ambient Temperature: 21.8°C, Liquid Temperature: 21.2°C
Probe:	SN 34/15 SSE2 EPGO265, ConvF: 1.81
Area Scan:	sam_direct_droit2_surf12mm.txt, h= 5.00 mm
Zoom Scan:	5x5x7,dx=8mm, dy=8mm, dz=5mm,Complete
Maximum location:	X=-36.000000, Y=-24.000000
SAR 10g (W/Kg):	0.125262
SAR 1g (W/Kg):	0.149796
Power drift (%):	-0.82
3D screen shot	



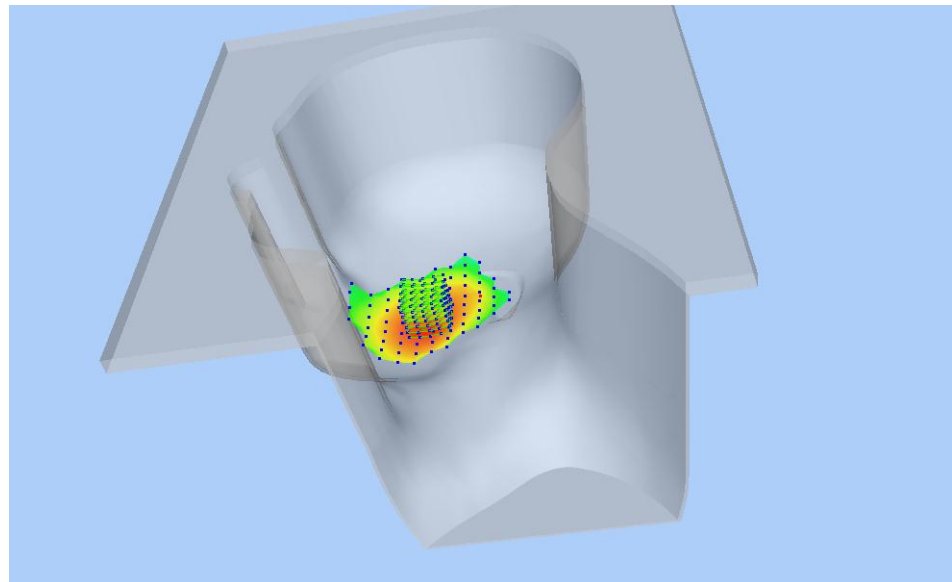
Z Axis Scan



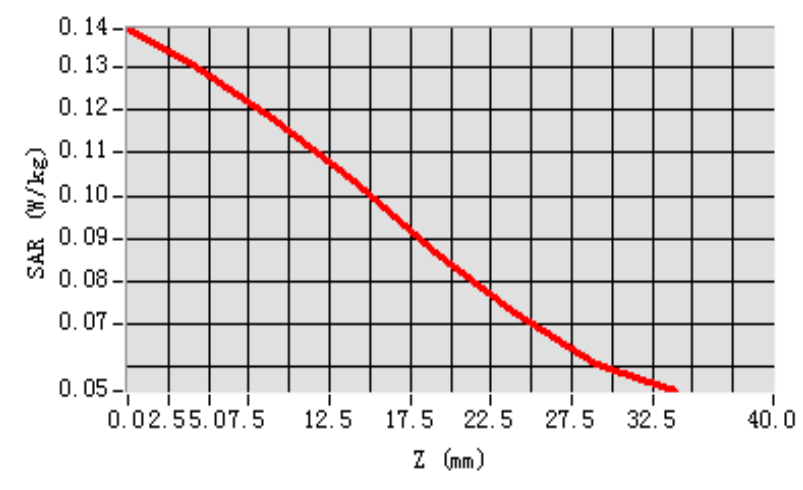
MEAS. 8 Right Head with Tilt on Middle Channel in LTE Band 12 mode

with 50%RB

Test Date:	16/5/2016
Measurement duration:	8 minutes 46 seconds
Signal:	LTE, f=707.5 MHz, Duty Cycle: 1:1.0
Liquid Parameters:	Permittivity: 43.28; Conductivity: 0.86 S/m
Test condition:	Ambient Temperature: 21.8°C, Liquid Temperature: 21.2°C
Probe:	SN 34/15 SSE2 EPGO265, ConvF: 1.81
Area Scan:	sam_direct_droit2_surf12mm.txt, h= 5.00 mm
Zoom Scan:	5x5x7,dx=8mm, dy=8mm, dz=5mm,Complete
Maximum location:	X=-36.000000, Y=-24.000000
SAR 10g (W/Kg):	0.107402
SAR 1g (W/Kg):	0.128237
Power drift (%):	-0.49
3D screen shot	



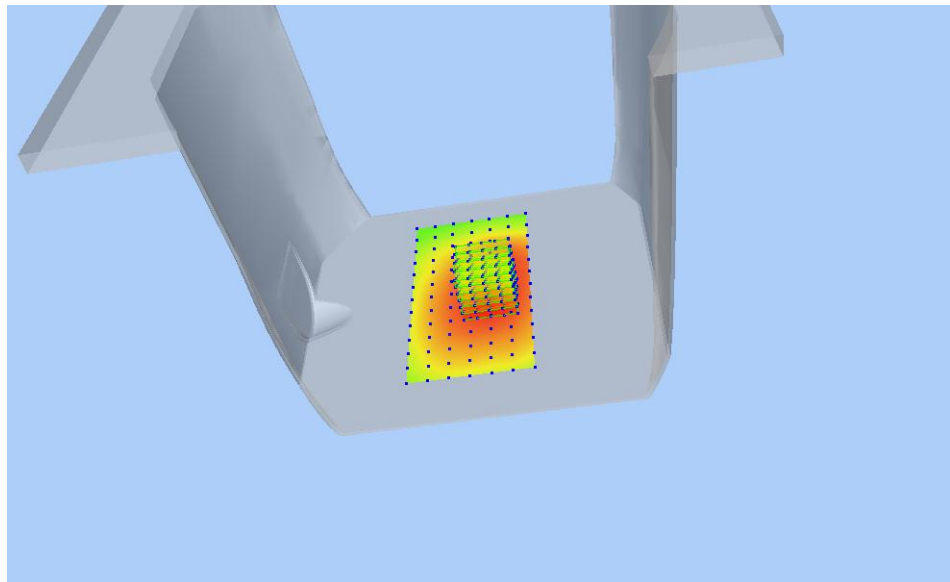
Z Axis Scan



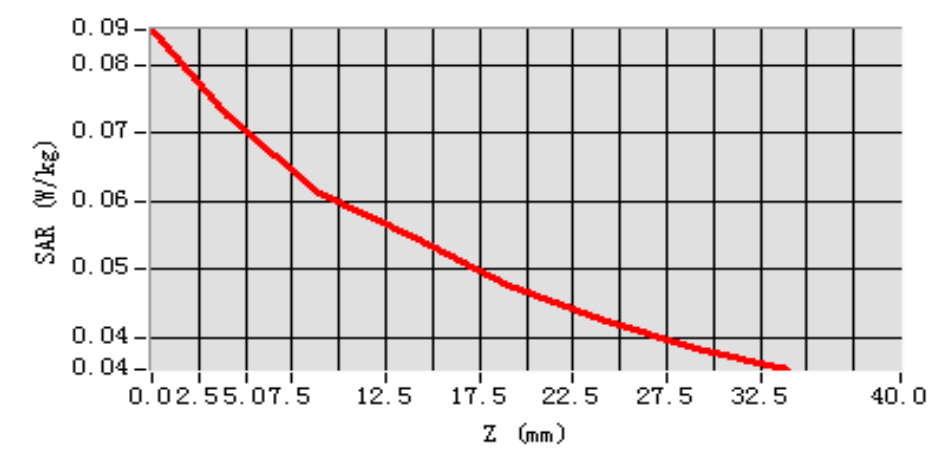
MEAS. 9 Back Side Plane with Front Side on Middle Channel in LTE Band

12 mode with 1RB

Test Date:	18/5/2016
Measurement duration:	11 minutes 58 seconds
Signal:	LTE, f=707.5 MHz, Duty Cycle: 1:1.0
Liquid Parameters:	Permittivity: 57.55; Conductivity: 0.94 S/m
Test condition:	Ambient Temperature: 22.4°C, Liquid Temperature: 21.6°C
Probe:	SN 34/15 SSE2 EPGO265, ConvF: 1.88
Area Scan:	sam_direct_droit2_surf12mm.txt, h= 5.00 mm
Zoom Scan:	5x5x7,dx=8mm, dy=8mm, dz=5mm,Complete
Maximum location:	X=8.000000, Y=-12.000000
SAR 10g (W/Kg):	0.059792
SAR 1g (W/Kg):	0.071796
Power drift (%):	-2.82
3D screen shot	



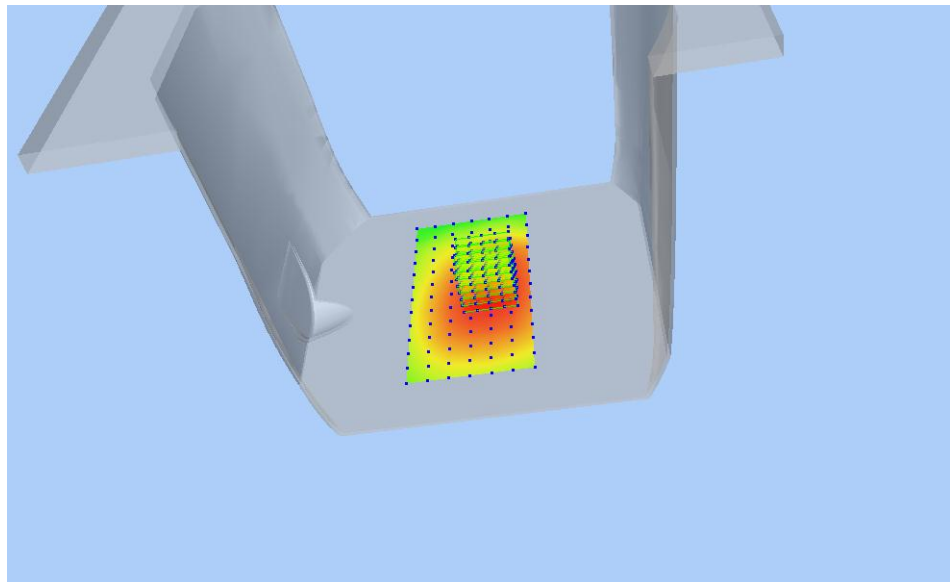
Z Axis Scan



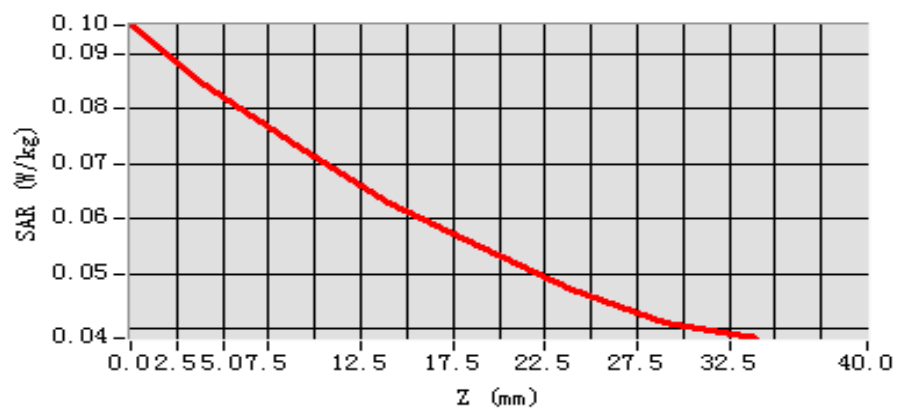
MEAS. 10 Back Side Plane with Front Side on Middle Channel in LTE

Band 12 mode with 50%RB

Test Date: 18/5/2016
Measurement duration: 12 minutes 0 seconds
Signal: LTE, f=707.5 MHz, Duty Cycle: 1:1.0
Liquid Parameters: Permittivity: 57.55; Conductivity: 0.94 S/m
Test condition: Ambient Temperature: 22.4°C, Liquid Temperature: 21.6°C
Probe: SN 34/15 SSE2 EPGO265, ConvF: 1.88
Area Scan: sam_direct_droit2_surf12mm.txt, h= 5.00 mm
Zoom Scan: 5x5x7,dx=8mm, dy=8mm, dz=5mm,Complete
Maximum location: X=8.000000, Y=0.000000
SAR 10g (W/Kg): 0.069596
SAR 1g (W/Kg): 0.084576
Power drift (%): -3.45
3D screen shot



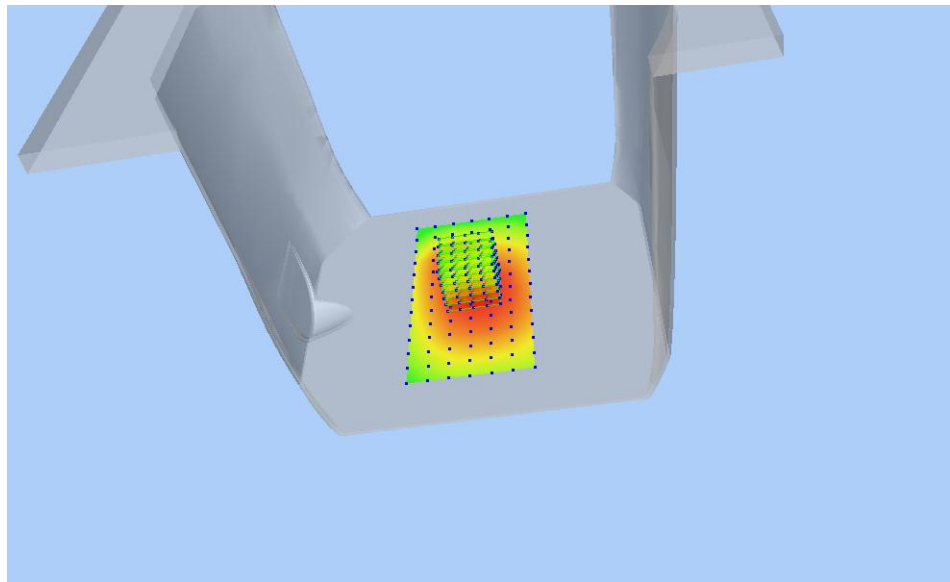
Z Axis Scan



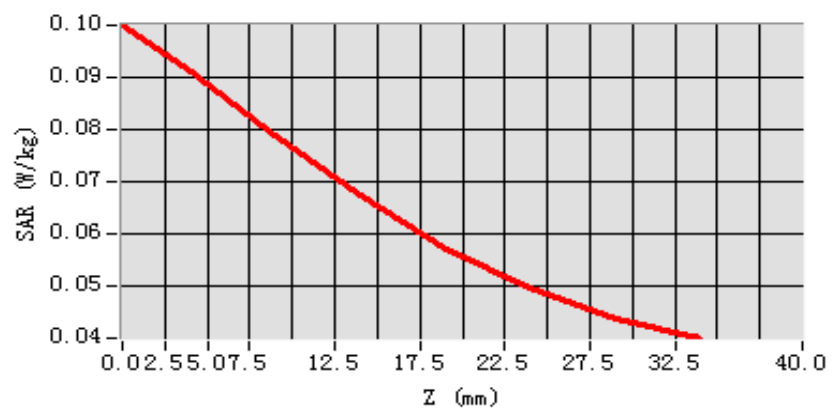
MEAS. 11 Back Side Plane with Back Side on Middle Channel in LTE

Band 12 mode with 1RB

Test Date:	18/5/2016
Measurement duration:	10 minutes 30 seconds
Signal:	LTE, f=707.5 MHz, Duty Cycle: 1:1.0
Liquid Parameters:	Permittivity: 57.55; Conductivity: 0.94 S/m
Test condition:	Ambient Temperature: 22.4°C, Liquid Temperature: 21.6°C
Probe:	SN 34/15 SSE2 EPGO265, ConvF: 1.88
Area Scan:	sam_direct_droit2_surf12mm.txt, h= 5.00 mm
Zoom Scan:	5x5x7,dx=8mm, dy=8mm, dz=5mm,Complete
Maximum location:	X=-4.000000, Y=0.000000
SAR 10g (W/Kg):	0.074110
SAR 1g (W/Kg):	0.089055
Power drift (%):	0.16
3D screen shot	



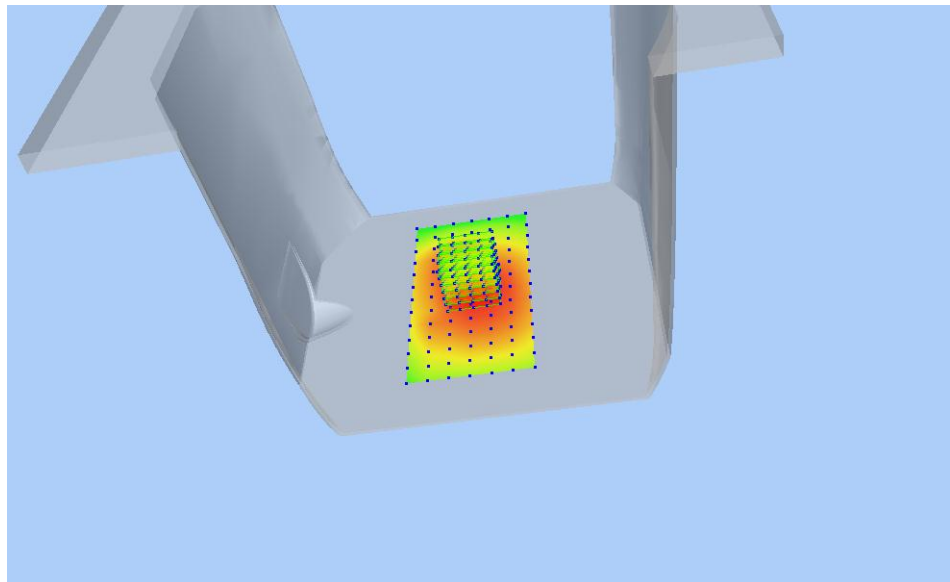
Z Axis Scan



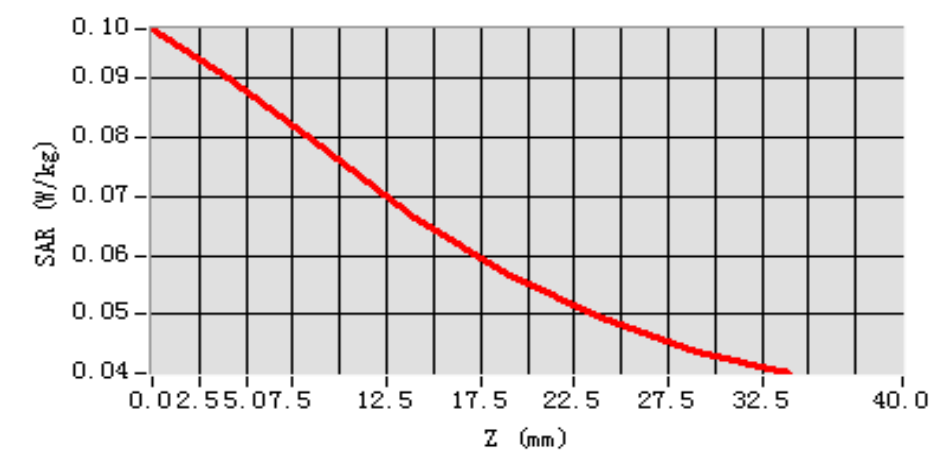
MEAS. 12 Back Side Plane with Back Side on Middle Channel in LTE

Band 12 mode with 50%RB

Test Date: 18/5/2016
Measurement duration: 10 minutes 29 seconds
Signal: LTE, f=707.5 MHz, Duty Cycle: 1:1.0
Liquid Parameters: Permittivity: 57.55; Conductivity: 0.94 S/m
Test condition: Ambient Temperature: 22.4°C, Liquid Temperature: 21.6°C
Probe: SN 34/15 SSE2 EPGO265, ConvF: 1.88
Area Scan: sam_direct_droit2_surf12mm.txt, h= 5.00 mm
Zoom Scan: 5x5x7,dx=8mm, dy=8mm, dz=5mm,Complete
Maximum location: X=-4.000000, Y=0.000000
SAR 10g (W/Kg): 0.073257
SAR 1g (W/Kg): 0.087696
Power drift (%): -0.96
3D screen shot



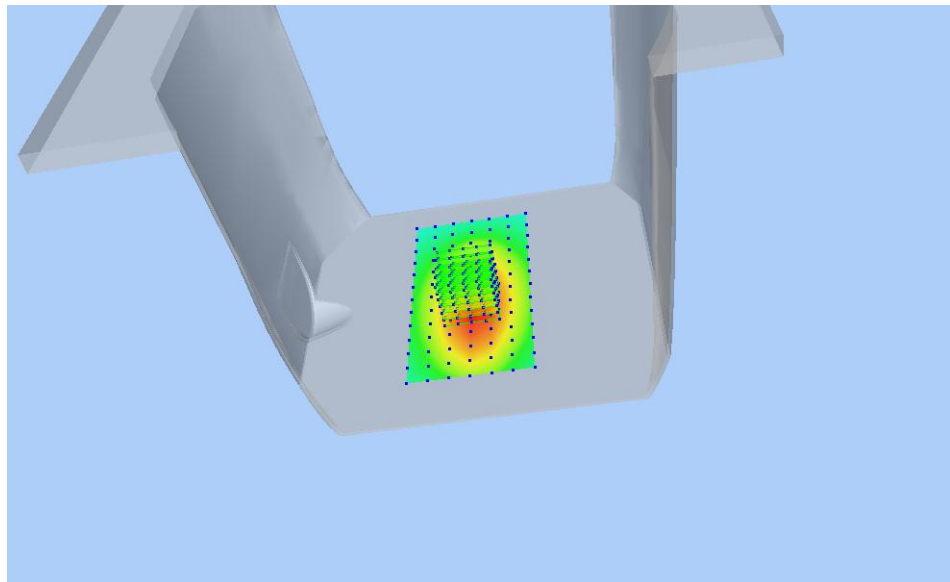
Z Axis Scan



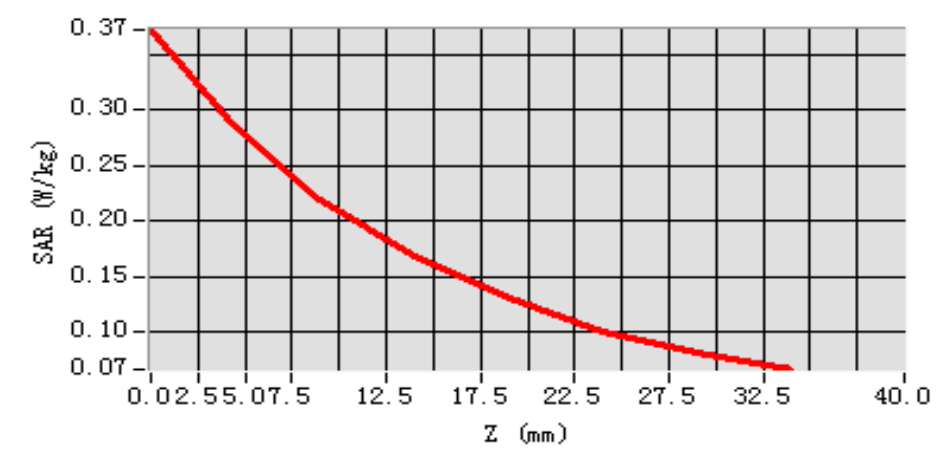
MEAS. 13 Back Side Plane with Left Edge on Middle Channel in LTE

Band 12 mode with 1RB

Test Date:	18/5/2016
Measurement duration:	10 minutes 18 seconds
Signal:	LTE, f=707.5 MHz, Duty Cycle: 1:1.0
Liquid Parameters:	Permittivity: 57.55; Conductivity: 0.94 S/m
Test condition:	Ambient Temperature: 22.4°C, Liquid Temperature: 21.6°C
Probe:	SN 34/15 SSE2 EPGO265, ConvF: 1.88
Area Scan:	sam_direct_droit2_surf12mm.txt, h= 5.00 mm
Zoom Scan:	5x5x7,dx=8mm, dy=8mm, dz=5mm,Complete
Maximum location:	X=-4.000000, Y=-12.000000
SAR 10g (W/Kg):	0.203368
SAR 1g (W/Kg):	0.283288
Power drift (%):	-0.45
3D screen shot	



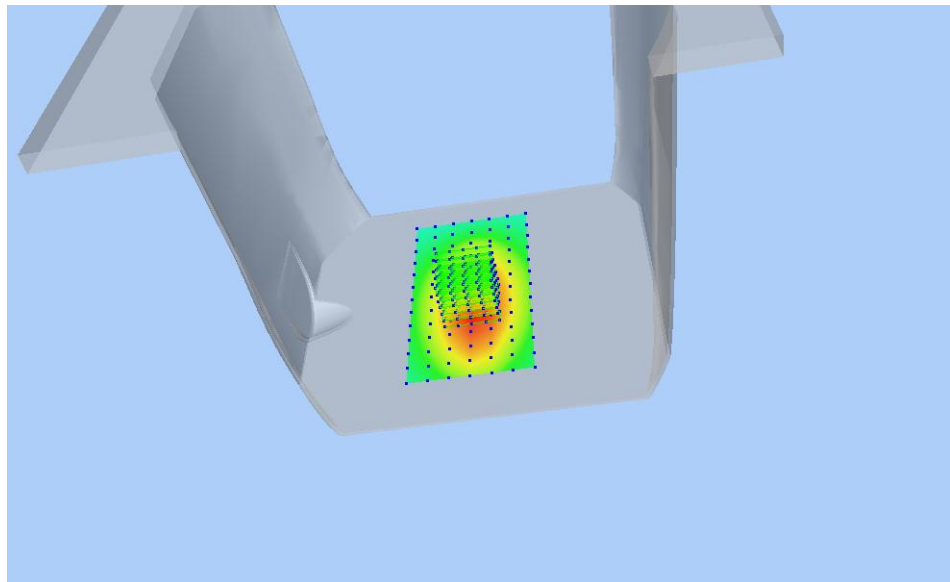
Z Axis Scan



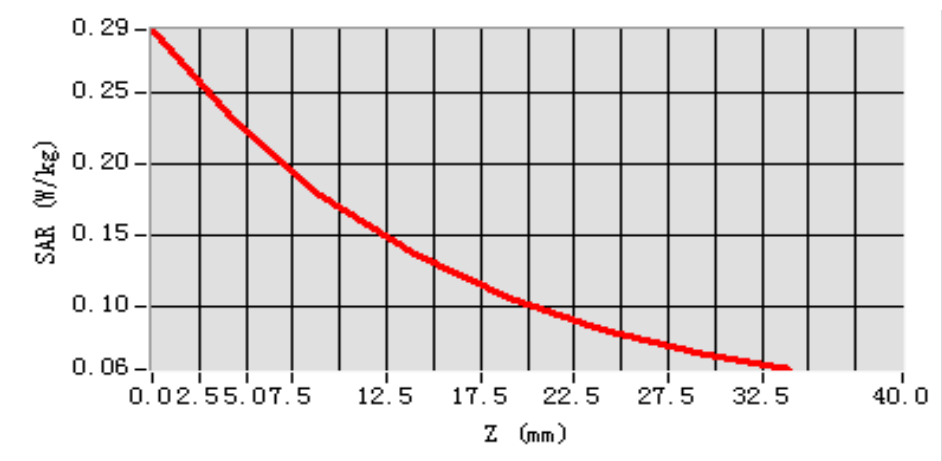
MEAS. 14 Back Side Plane with Left Edge on Middle Channel in LTE

Band 12 mode with 50%RB

Test Date: 18/5/2016
Measurement duration: 10 minutes 19 seconds
Signal: LTE, f=707.5 MHz, Duty Cycle: 1:1.0
Liquid Parameters: Permittivity: 57.55; Conductivity: 0.94 S/m
Test condition: Ambient Temperature: 22.4°C, Liquid Temperature: 21.6°C
Probe: SN 34/15 SSE2 EPGO265, ConvF: 1.88
Area Scan: sam_direct_droit2_surf12mm.txt, h= 5.00 mm
Zoom Scan: 5x5x7,dx=8mm, dy=8mm, dz=5mm,Complete
Maximum location: X=-4.000000, Y=-12.000000
SAR 10g (W/Kg): 0.164950
SAR 1g (W/Kg): 0.227578
Power drift (%): -0.94
3D screen shot



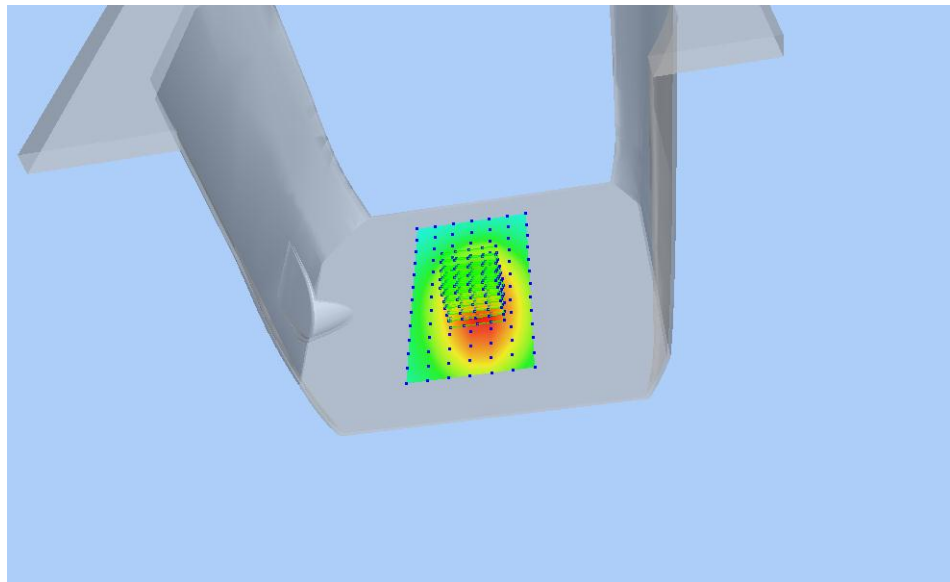
Z Axis Scan



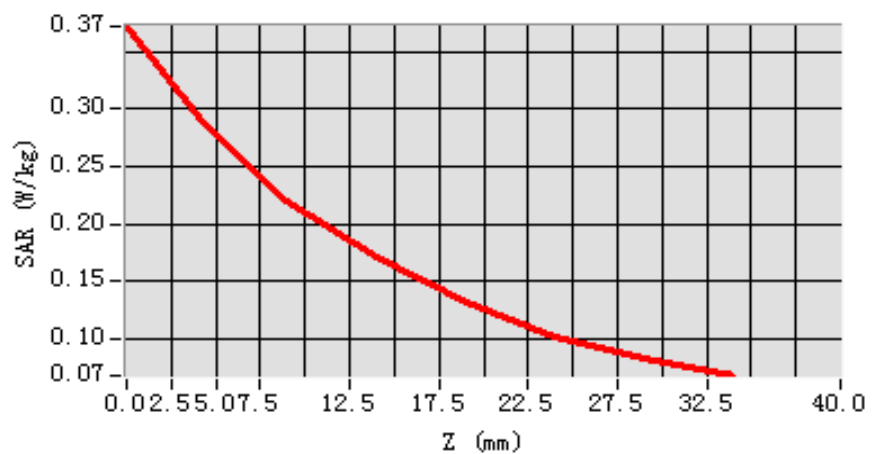
MEAS. 15 Back Side Plane with Right Edge on Middle Channel in LTE

Band 12 mode with 1RB

Test Date:	18/5/2016
Measurement duration:	10 minutes 46 seconds
Signal:	LTE, f=707.5 MHz, Duty Cycle: 1:1.0
Liquid Parameters:	Permittivity: 57.55; Conductivity: 0.94 S/m
Test condition:	Ambient Temperature: 22.4°C, Liquid Temperature: 21.6°C
Probe:	SN 34/15 SSE2 EPGO265, ConvF: 1.88
Area Scan:	sam_direct_droit2_surf12mm.txt, h= 5.00 mm
Zoom Scan:	5x5x7,dx=8mm, dy=8mm, dz=5mm,Complete
Maximum location:	X=-4.000000, Y=-12.000000
SAR 10g (W/Kg):	0.204761
SAR 1g (W/Kg):	0.284400
Power drift (%):	0.48
3D screen shot	



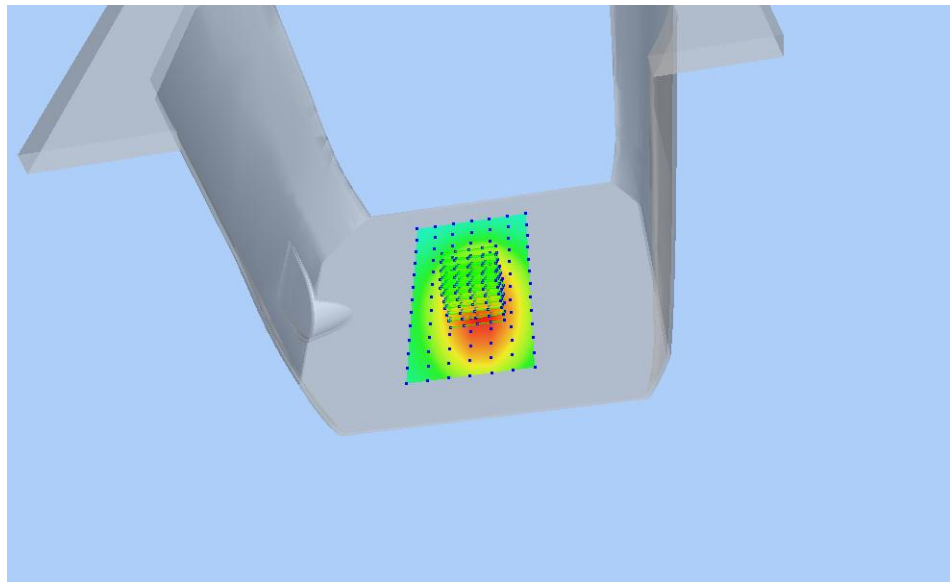
Z Axis Scan



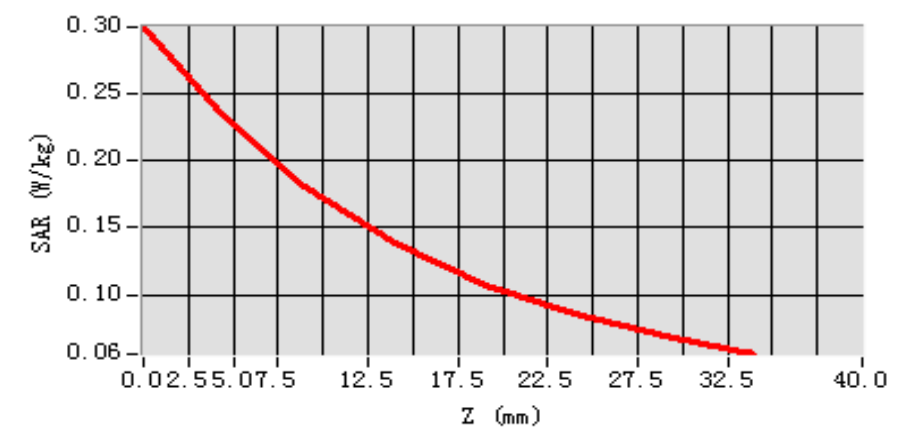
MEAS. 16 Back Side Plane with Right Edge on Middle Channel in LTE

Band 12 mode with 50%RB

Test Date:	18/5/2016
Measurement duration:	10 minutes 47 seconds
Signal:	LTE, f=707.5 MHz, Duty Cycle: 1:1.0
Liquid Parameters:	Permittivity: 57.55; Conductivity: 0.94 S/m
Test condition:	Ambient Temperature: 22.4°C, Liquid Temperature: 21.6°C
Probe:	SN 34/15 SSE2 EPGO265, ConvF: 1.88
Area Scan:	sam_direct_droit2_surf12mm.txt, h= 5.00 mm
Zoom Scan:	5x5x7,dx=8mm, dy=8mm, dz=5mm,Complete
Maximum location:	X=-4.000000, Y=-12.000000
SAR 10g (W/Kg):	0.166958
SAR 1g (W/Kg):	0.230342
Power drift (%):	-0.96
3D screen shot	



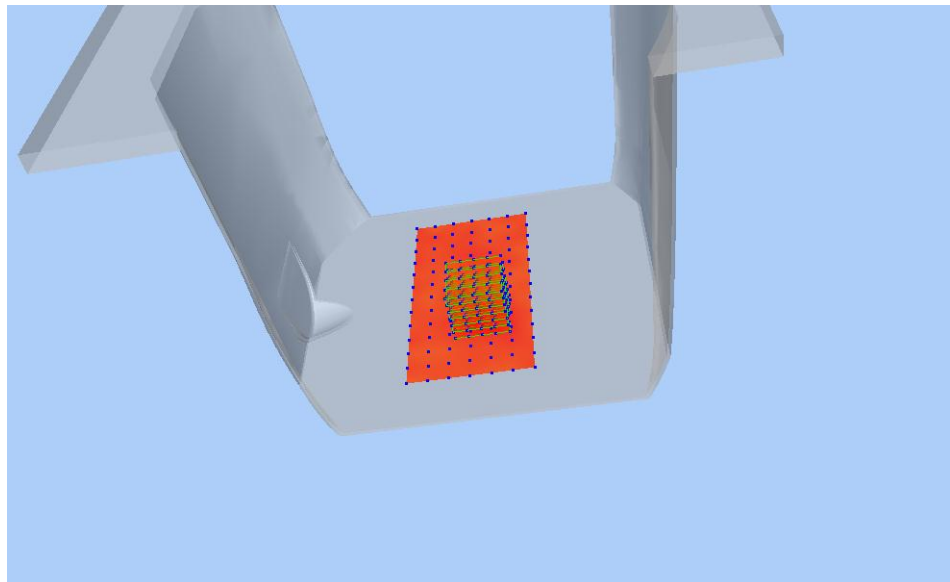
Z Axis Scan



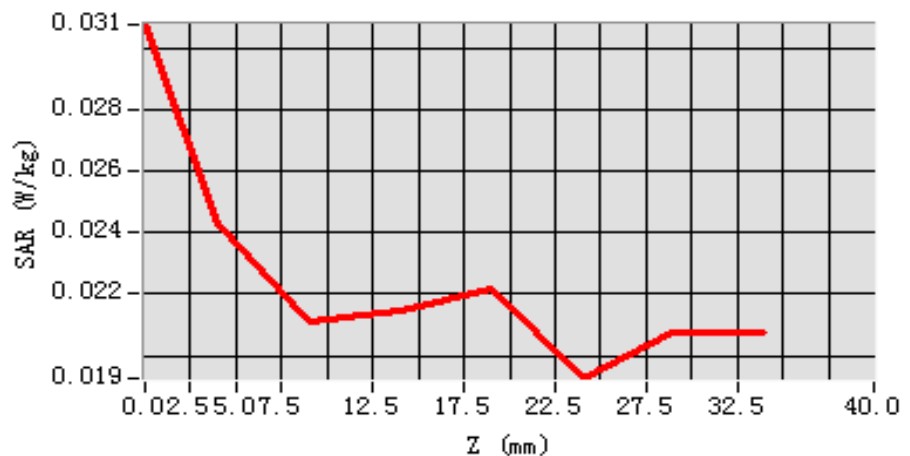
MEAS. 17 Back Side Plane with Bottom Edge on Middle Channel in LTE

Band 12 mode with 1RB

Test Date: 18/5/2016
Measurement duration: 11 minutes 13 seconds
Signal: LTE, f=707.5 MHz, Duty Cycle: 1:1.0
Liquid Parameters: Permittivity: 57.55; Conductivity: 0.94 S/m
Test condition: Ambient Temperature: 22.4°C, Liquid Temperature: 21.6°C
Probe: SN 34/15 SSE2 EPGO265, ConvF: 1.88
Area Scan: sam_direct_droit2_surf12mm.txt, h= 5.00 mm
Zoom Scan: 5x5x7,dx=8mm, dy=8mm, dz=5mm,Complete
Maximum location: X=8.000000, Y=-24.000000
SAR 10g (W/Kg): 0.022370
SAR 1g (W/Kg): 0.024380
Power drift (%): -0.27
3D screen shot



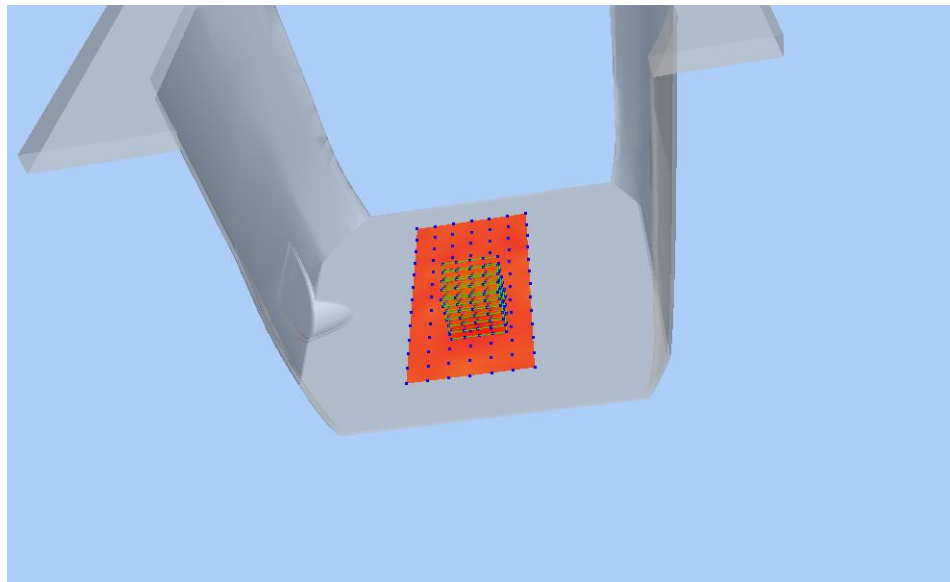
Z Axis Scan



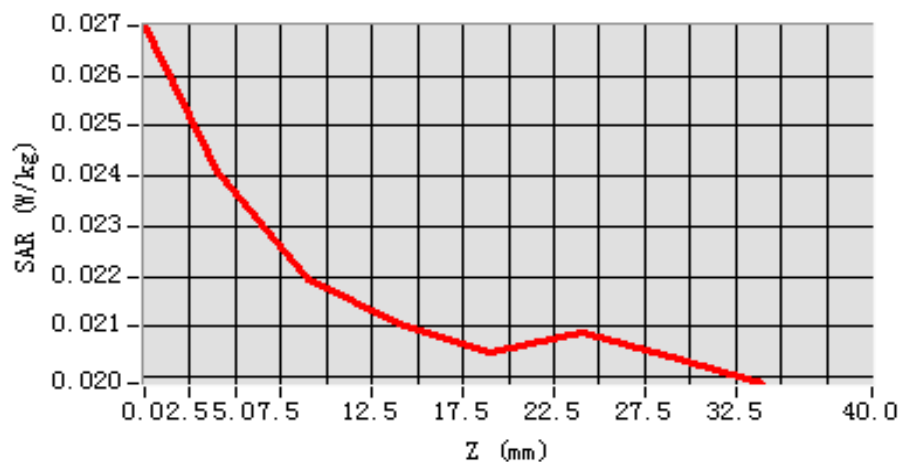
MEAS. 18 Back Side Plane with Bottom Edge on Middle Channel in LTE

Band 12 mode with 50%RB

Test Date: 18/5/2016
Measurement duration: 10 minutes 53 seconds
Signal: LTE, f=707.5 MHz, Duty Cycle: 1:1.0
Liquid Parameters: Permittivity: 57.55; Conductivity: 0.94 S/m
Test condition: Ambient Temperature: 22.4°C, Liquid Temperature: 21.6°C
Probe: SN 34/15 SSE2 EPGO265, ConvF: 1.88
Area Scan: sam_direct_droit2_surf12mm.txt, h= 5.00 mm
Zoom Scan: 5x5x7,dx=8mm, dy=8mm, dz=5mm,Complete
Maximum location: X=-4.000000, Y=-24.000000
SAR 10g (W/Kg): 0.022274
SAR 1g (W/Kg): 0.023919
Power drift (%): -1.39
3D screen shot



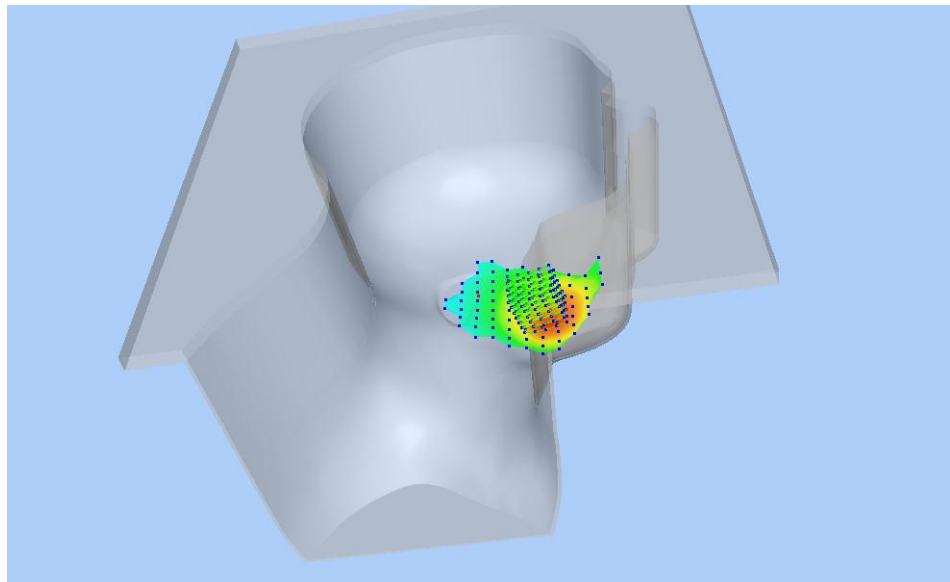
Z Axis Scan



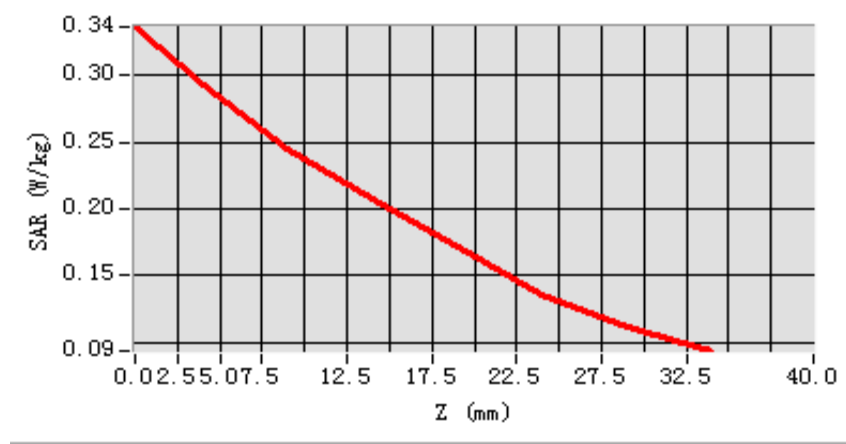
MEAS. 19 Left Head with Cheek on High Channel in LTE Band 17 mode

with 1RB

Test Date:	16/5/2016
Measurement duration:	9 minutes 11 seconds
Signal:	LTE, f=711.0 MHz, Duty Cycle: 1:1.0
Liquid Parameters:	Permittivity: 43.12; Conductivity: 0.87 S/m
Test condition:	Ambient Temperature: 21.8°C, Liquid Temperature: 21.2°C
Probe:	SN 34/15 SSE2 EPGO265, ConvF: 1.81
Area Scan:	sam_direct_droit2_surf12mm.txt, h= 5.00 mm
Zoom Scan:	5x5x7,dx=8mm, dy=8mm, dz=5mm,Complete
Maximum location:	X=-48.000000, Y=-36.000000
SAR 10g (W/Kg):	0.226740
SAR 1g (W/Kg):	0.286314
Power drift (%):	1.47
3D screen shot	



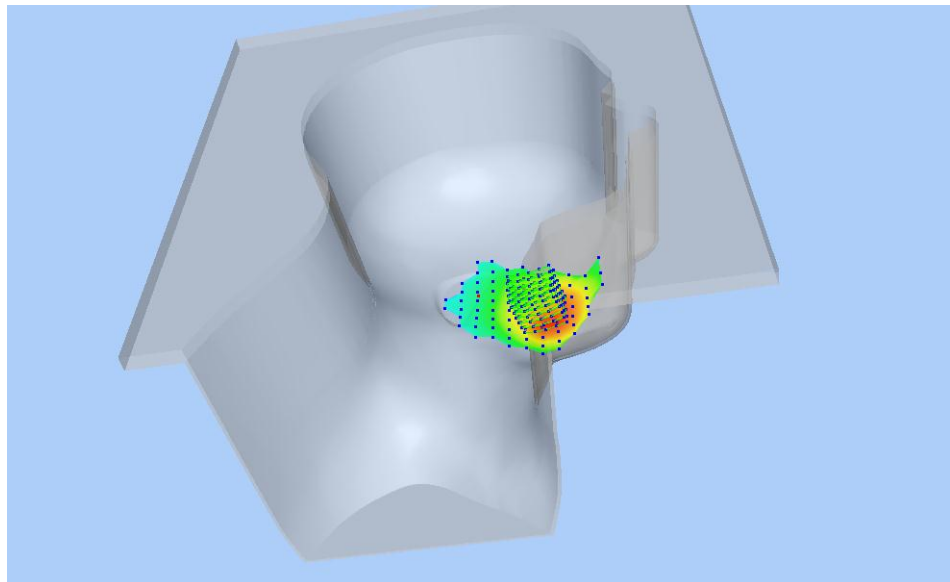
Z Axis Scan



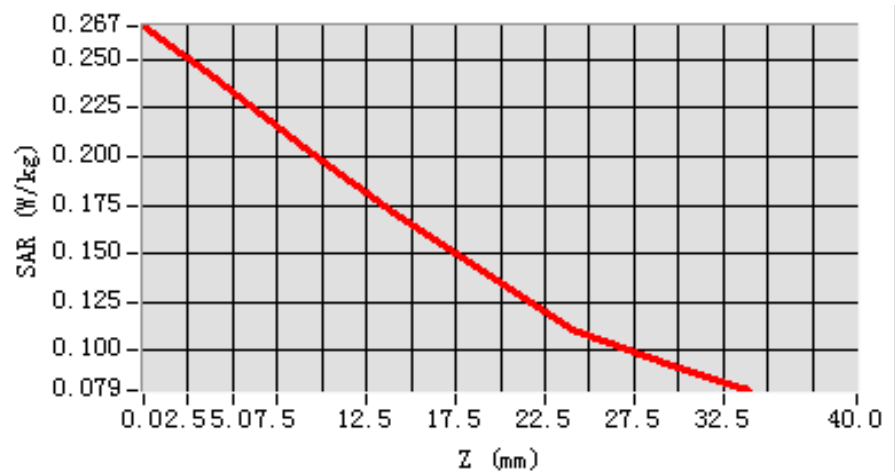
MEAS. 20 Left Head with Cheek on Low Channel in LTE Band 17 mode

with 50%RB

Test Date:	16/5/2016
Measurement duration:	9 minutes 11 seconds
Signal:	LTE, f=709.0 MHz, Duty Cycle: 1:1.0
Liquid Parameters:	Permittivity: 43.23; Conductivity: 0.86 S/m
Test condition:	Ambient Temperature: 21.8°C, Liquid Temperature: 21.2°C
Probe:	SN 34/15 SSE2 EPGO265, ConvF: 1.81
Area Scan:	sam_direct_droit2_surf12mm.txt, h= 5.00 mm
Zoom Scan:	5x5x7,dx=8mm, dy=8mm, dz=5mm,Complete
Maximum location:	X=-48.000000, Y=-36.000000
SAR 10g (W/Kg):	0.186213
SAR 1g (W/Kg):	0.233877
Power drift (%):	-0.09
3D screen shot	



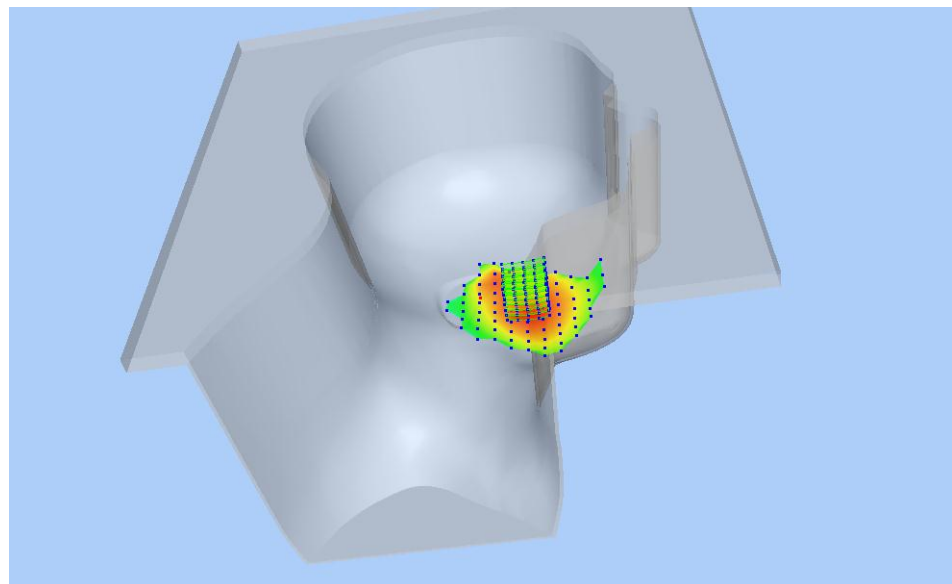
Z Axis Scan



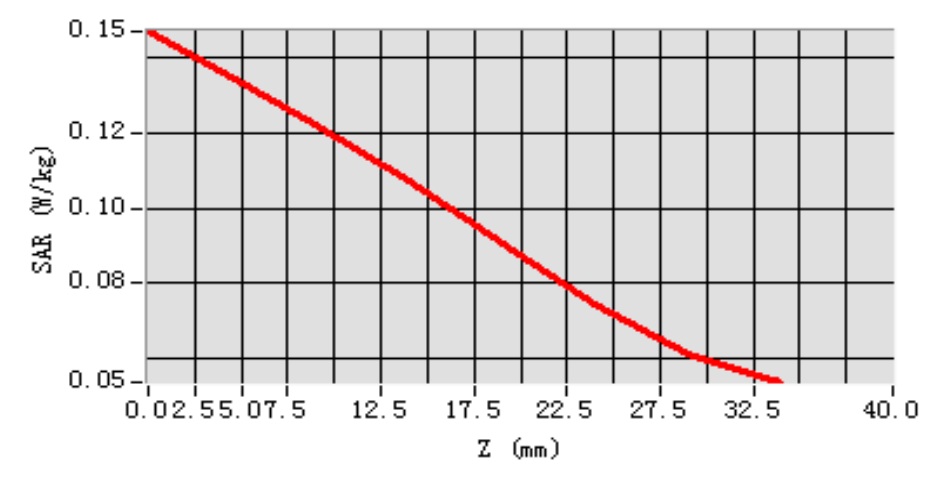
MEAS. 21 Left Head with Tilt on High Channel in LTE Band 17 mode

with 1RB

Test Date:	16/5/2016
Measurement duration:	8 minutes 32 seconds
Signal:	LTE, f=711.0 MHz, Duty Cycle: 1:1.0
Liquid Parameters:	Permittivity: 43.12; Conductivity: 0.87 S/m
Test condition:	Ambient Temperature: 21.8°C, Liquid Temperature: 21.2°C
Probe:	SN 34/15 SSE2 EPGO265, ConvF: 1.81
Area Scan:	sam_direct_droit2_surf12mm.txt, h= 5.00 mm
Zoom Scan:	5x5x7,dx=8mm, dy=8mm, dz=5mm,Complete
Maximum location:	X=-36.000000, Y=-12.000000
SAR 10g (W/Kg):	0.111880
SAR 1g (W/Kg):	0.134099
Power drift (%):	0.44
3D screen shot	



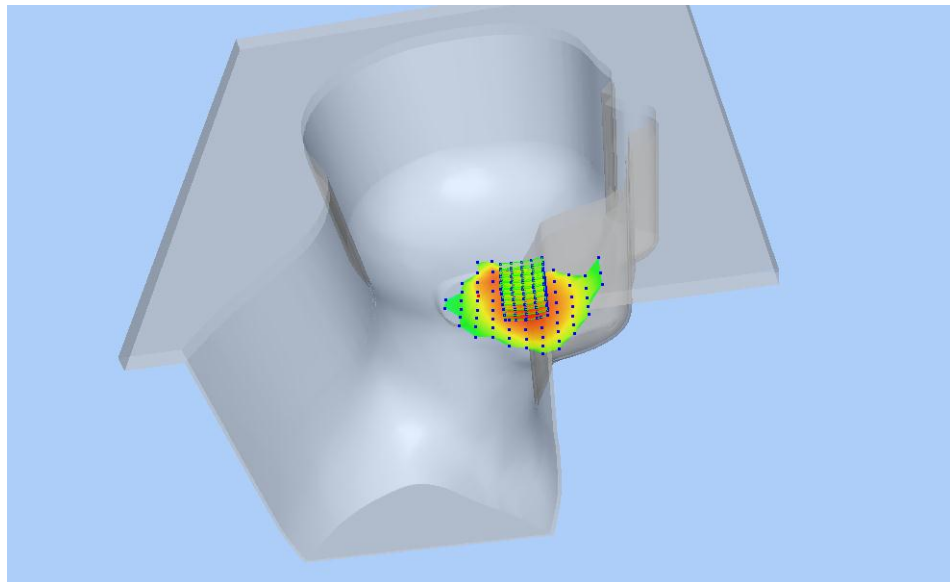
Z Axis Scan



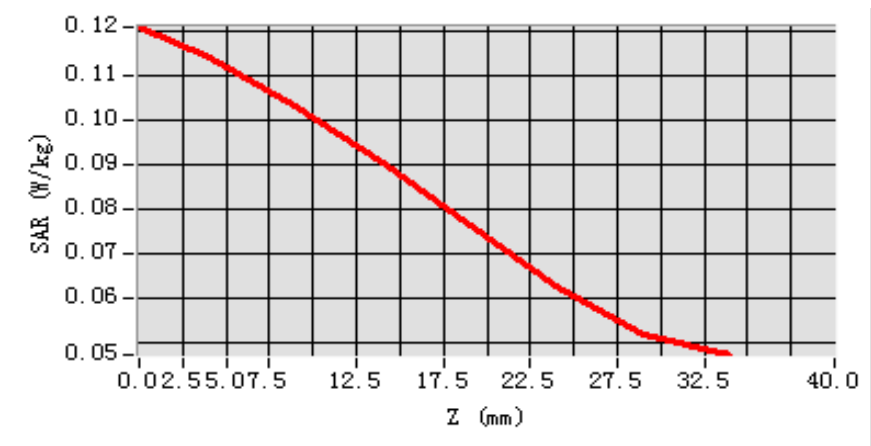
MEAS. 22 Left Head with Tilt on Low Channel in LTE Band 17 mode with

50%RB

Test Date:	16/5/2016
Measurement duration:	8 minutes 28 seconds
Signal:	LTE, f=709.0 MHz, Duty Cycle: 1:1.0
Liquid Parameters:	Permittivity: 43.23; Conductivity: 0.86 S/m
Test condition:	Ambient Temperature: 21.8°C, Liquid Temperature: 21.2°C
Probe:	SN 34/15 SSE2 EPGO265, ConvF: 1.81
Area Scan:	sam_direct_droit2_surf12mm.txt, h= 5.00 mm
Zoom Scan:	5x5x7,dx=8mm, dy=8mm, dz=5mm,Complete
Maximum location:	X=-36.000000, Y=-24.000000
SAR 10g (W/Kg):	0.093964
SAR 1g (W/Kg):	0.112302
Power drift (%):	0.30
3D screen shot	



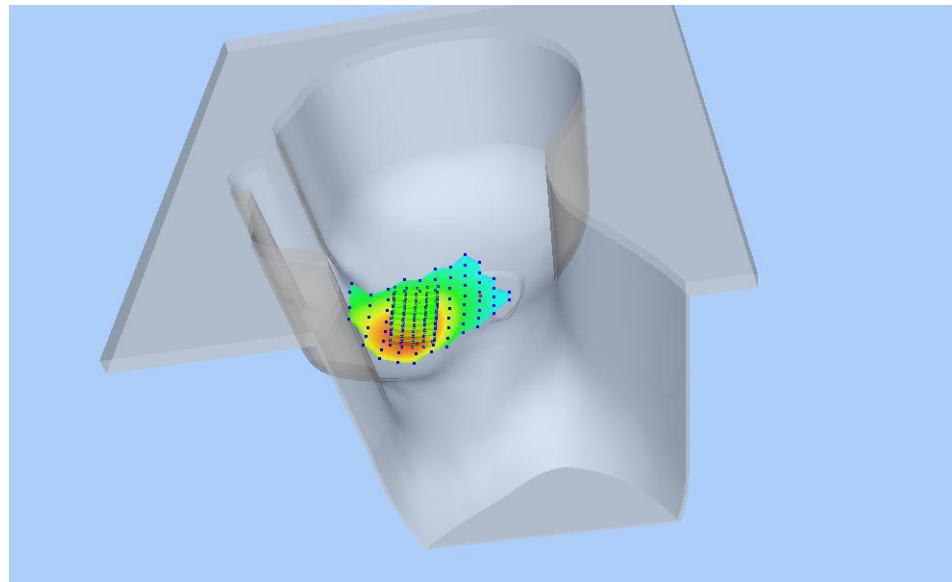
Z Axis Scan



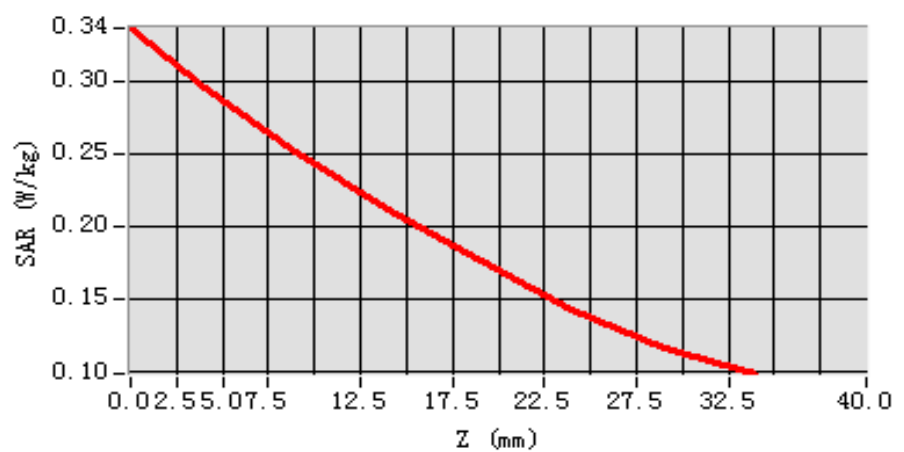
MEAS. 23 Right Head with Cheek on High Channel in LTE Band 17 mode

with 1RB

Test Date:	16/5/2016
Measurement duration:	9 minutes 25 seconds
Signal:	LTE, f=711.0 MHz, Duty Cycle: 1:1.0
Liquid Parameters:	Permittivity: 43.12; Conductivity: 0.87 S/m
Test condition:	Ambient Temperature: 21.8°C, Liquid Temperature: 21.2°C
Probe:	SN 34/15 SSE2 EPGO265, ConvF: 1.81
Area Scan:	sam_direct_droit2_surf12mm.txt, h= 5.00 mm
Zoom Scan:	5x5x7,dx=8mm, dy=8mm, dz=5mm,Complete
Maximum location:	X=-48.000000, Y=-36.000000
SAR 10g (W/Kg):	0.230458
SAR 1g (W/Kg):	0.288661
Power drift (%):	-0.55
3D screen shot	



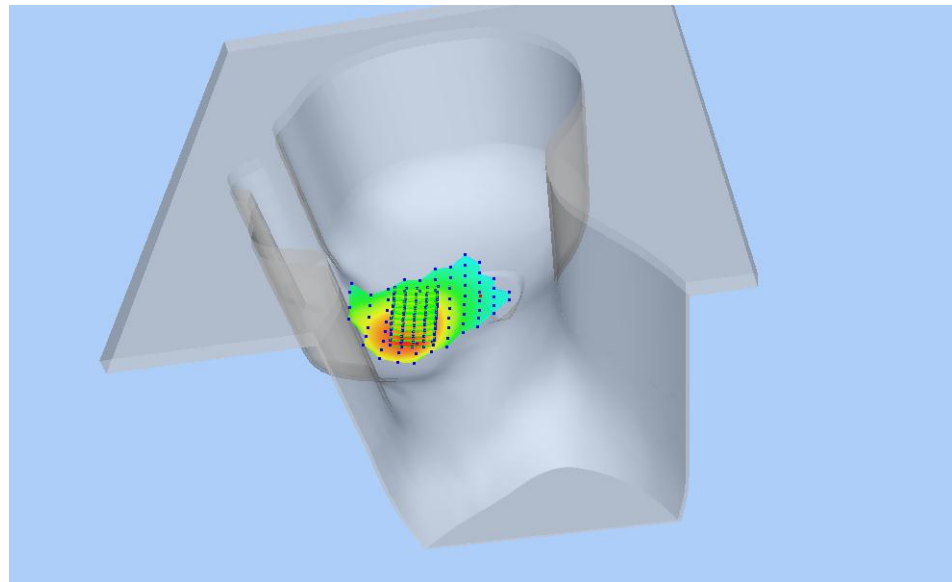
Z Axis Scan



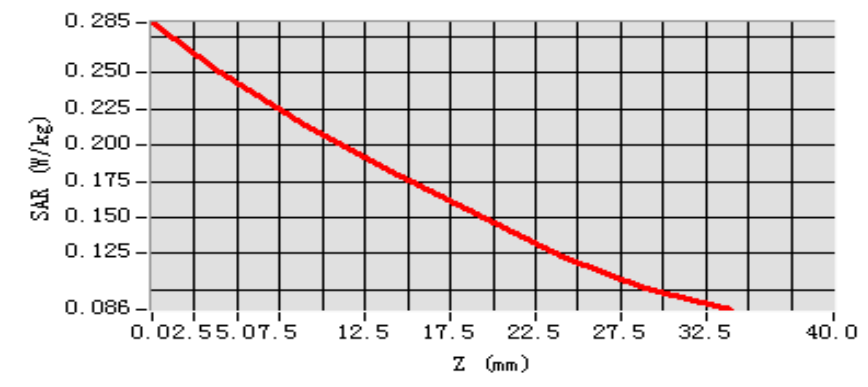
MEAS. 24 Right Head with Cheek on Low Channel in LTE Band 17 mode

with 50%RB

Test Date:	16/5/2016
Measurement duration:	9 minutes 26 seconds
Signal:	LTE, f=709.0 MHz, Duty Cycle: 1:1.0
Liquid Parameters:	Permittivity: 43.23; Conductivity: 0.86 S/m
Test condition:	Ambient Temperature: 21.8°C, Liquid Temperature: 21.2°C
Probe:	SN 34/15 SSE2 EPGO265, ConvF: 1.81
Area Scan:	sam_direct_droit2_surf12mm.txt, h= 5.00 mm
Zoom Scan:	5x5x7,dx=8mm, dy=8mm, dz=5mm,Complete
Maximum location:	X=-48.000000, Y=-36.000000
SAR 10g (W/Kg):	0.197507
SAR 1g (W/Kg):	0.246723
Power drift (%):	1.63
3D screen shot	



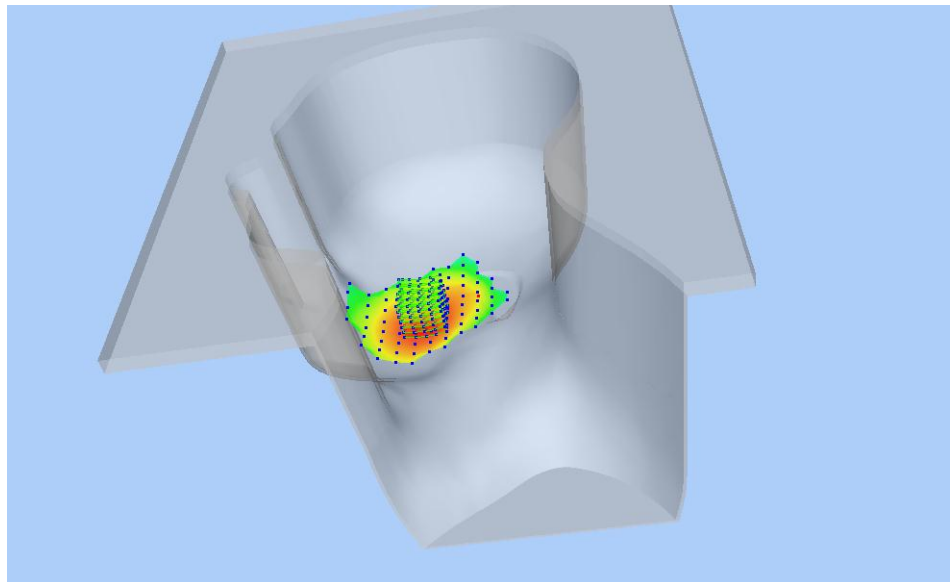
Z Axis Scan



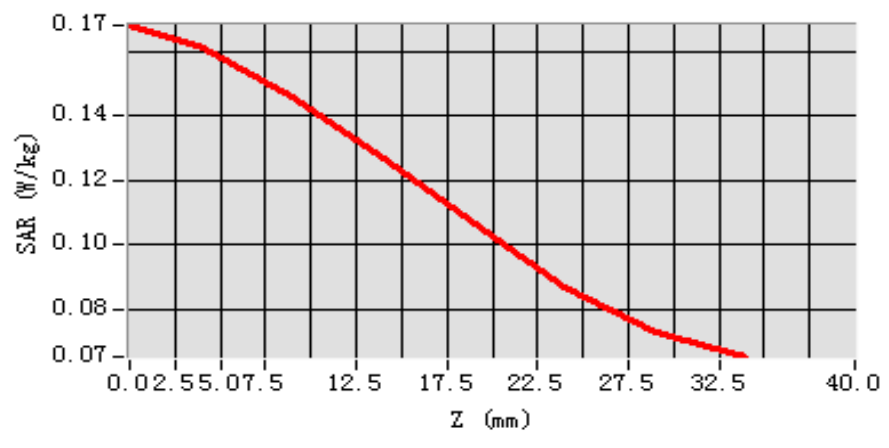
MEAS. 25 Right Head with Tilt on High Channel in LTE Band 17 mode

with 1RB

Test Date:	16/5/2016
Measurement duration:	8 minutes 45 seconds
Signal:	LTE, f=711.0 MHz, Duty Cycle: 1:1.0
Liquid Parameters:	Permittivity: 43.12; Conductivity: 0.87 S/m
Test condition:	Ambient Temperature: 21.8°C, Liquid Temperature: 21.2°C
Probe:	SN 34/15 SSE2 EPGO265, ConvF: 1.81
Area Scan:	sam_direct_droit2_surf12mm.txt, h= 5.00 mm
Zoom Scan:	5x5x7,dx=8mm, dy=8mm, dz=5mm,Complete
Maximum location:	X=-36.000000, Y=-24.000000
SAR 10g (W/Kg):	0.131872
SAR 1g (W/Kg):	0.157624
Power drift (%):	-0.18
3D screen shot	



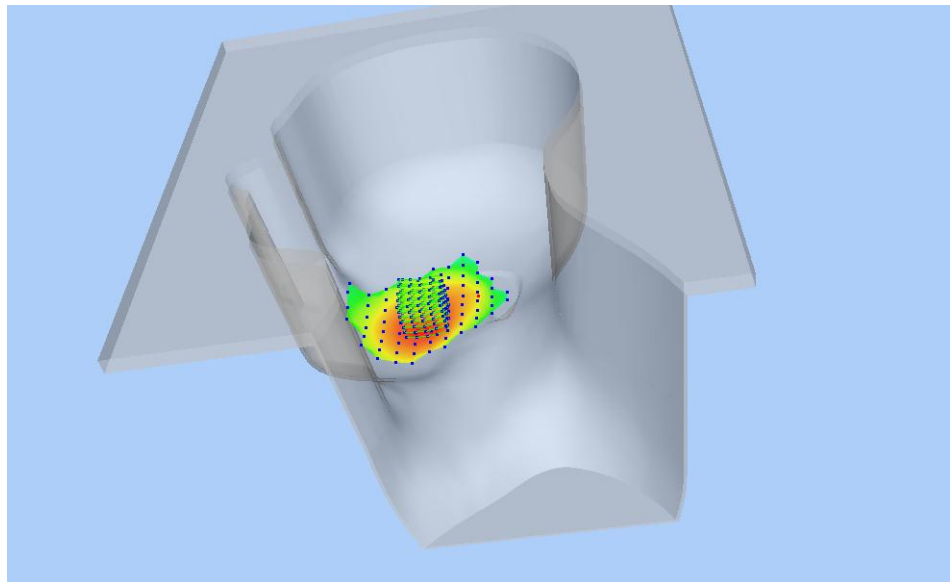
Z Axis Scan



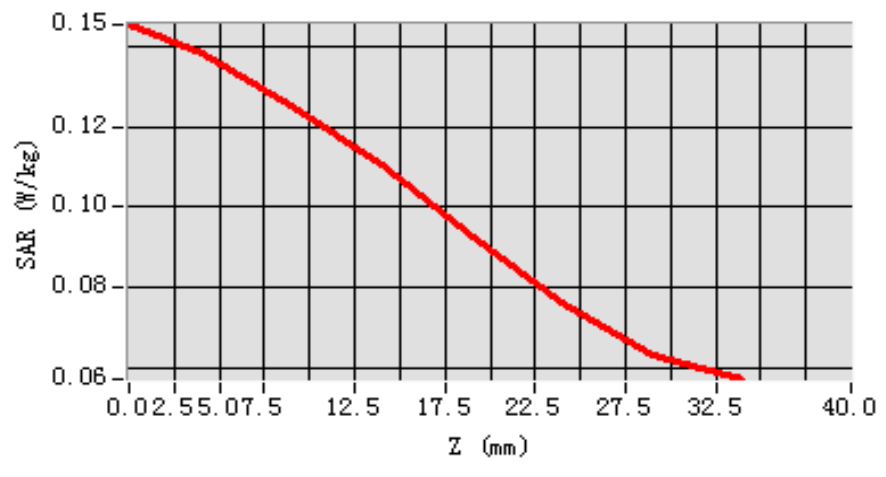
MEAS. 26 Right Head with Tilt on Low Channel in LTE Band 17 mode

with 50%RB

Test Date:	16/5/2016
Measurement duration:	8 minutes 47 seconds
Signal:	LTE, f=709.0 MHz, Duty Cycle: 1:1.0
Liquid Parameters:	Permittivity: 43.23; Conductivity: 0.86 S/m
Test condition:	Ambient Temperature: 21.8°C, Liquid Temperature: 21.2°C
Probe:	SN 34/15 SSE2 EPGO265, ConvF: 1.81
Area Scan:	sam_direct_droit2_surf12mm.txt, h= 5.00 mm
Zoom Scan:	5x5x7,dx=8mm, dy=8mm, dz=5mm,Complete
Maximum location:	X=-36.000000, Y=-24.000000
SAR 10g (W/Kg):	0.113680
SAR 1g (W/Kg):	0.135562
Power drift (%):	-0.61
3D screen shot	



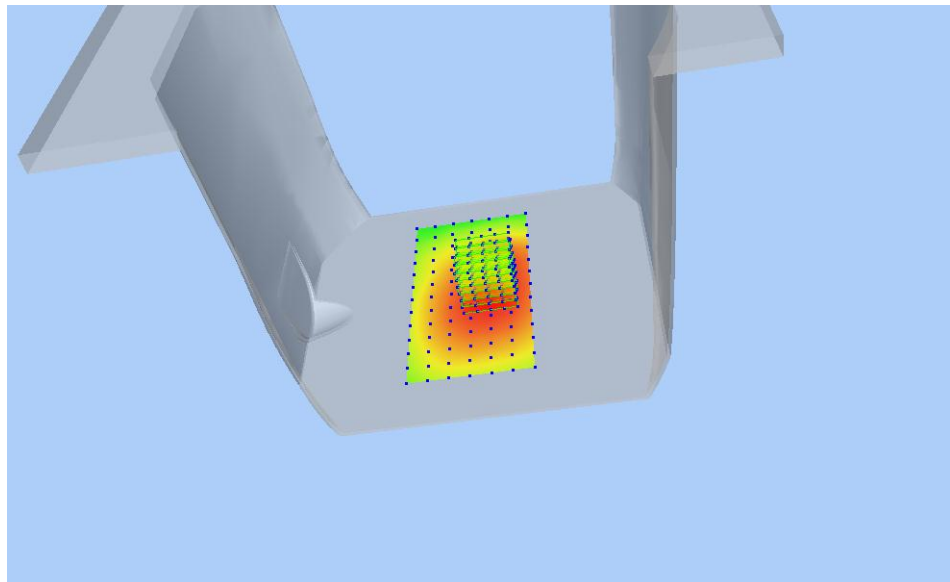
Z Axis Scan



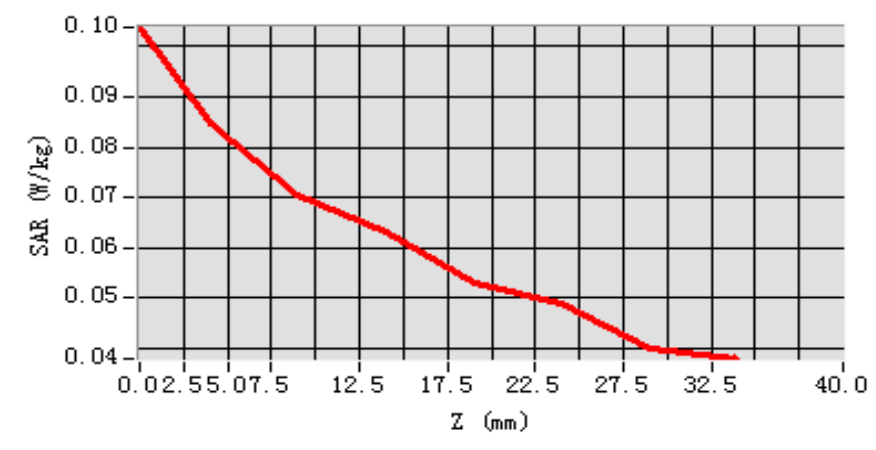
MEAS. 27 Back Side Plane with Front Side on High Channel in LTE Band

17 mode with 1RB

Test Date:	18/5/2016
Measurement duration:	11 minutes 59 seconds
Signal:	LTE, f=711.0 MHz, Duty Cycle: 1:1.0
Liquid Parameters:	Permittivity: 57.21; Conductivity: 0.94 S/m
Test condition:	Ambient Temperature: 22.4°C, Liquid Temperature: 21.6°C
Probe:	SN 34/15 SSE2 EPGO265, ConvF: 1.88
Area Scan:	sam_direct_droit2_surf12mm.txt, h= 5.00 mm
Zoom Scan:	5x5x7,dx=8mm, dy=8mm, dz=5mm,Complete
Maximum location:	X=8.000000, Y=0.000000
SAR 10g (W/Kg):	0.069284
SAR 1g (W/Kg):	0.083028
Power drift (%):	-2.50
3D screen shot	



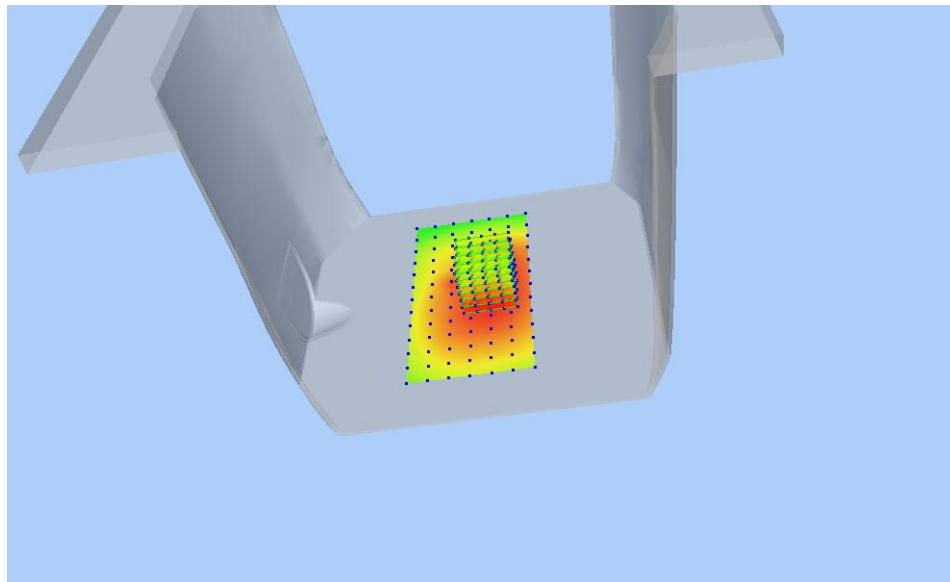
Z Axis Scan



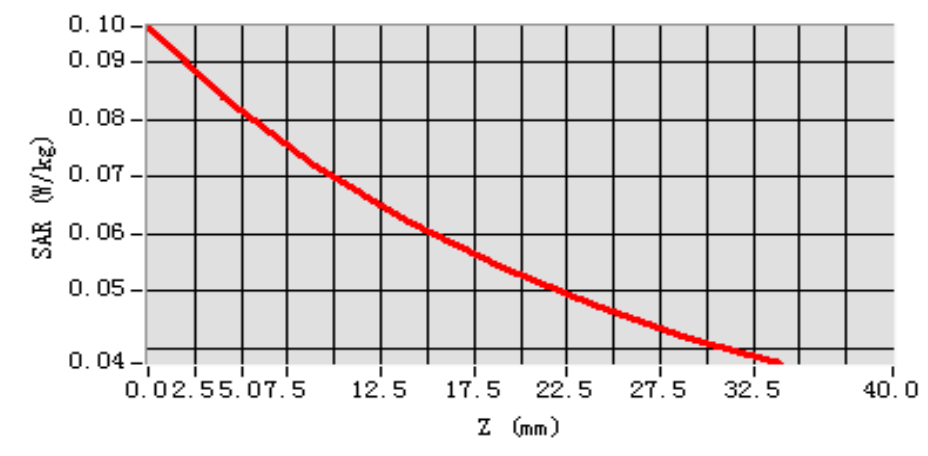
MEAS. 28 Back Side Plane with Front Side on Low Channel in LTE Band

17 mode with 50%RB

Test Date:	18/5/2016
Measurement duration:	11 minutes 58 seconds
Signal:	LTE, f=709.0 MHz, Duty Cycle: 1:1.0
Liquid Parameters:	Permittivity: 57.40; Conductivity: 0.94 S/m
Test condition:	Ambient Temperature: 22.4°C, Liquid Temperature: 21.6°C
Probe:	SN 34/15 SSE2 EPGO265, ConvF: 1.88
Area Scan:	sam_direct_droit2_surf12mm.txt, h= 5.00 mm
Zoom Scan:	5x5x7,dx=8mm, dy=8mm, dz=5mm,Complete
Maximum location:	X=8.000000, Y=0.000000
SAR 10g (W/Kg):	0.068501
SAR 1g (W/Kg):	0.082395
Power drift (%):	-3.68
3D screen shot	



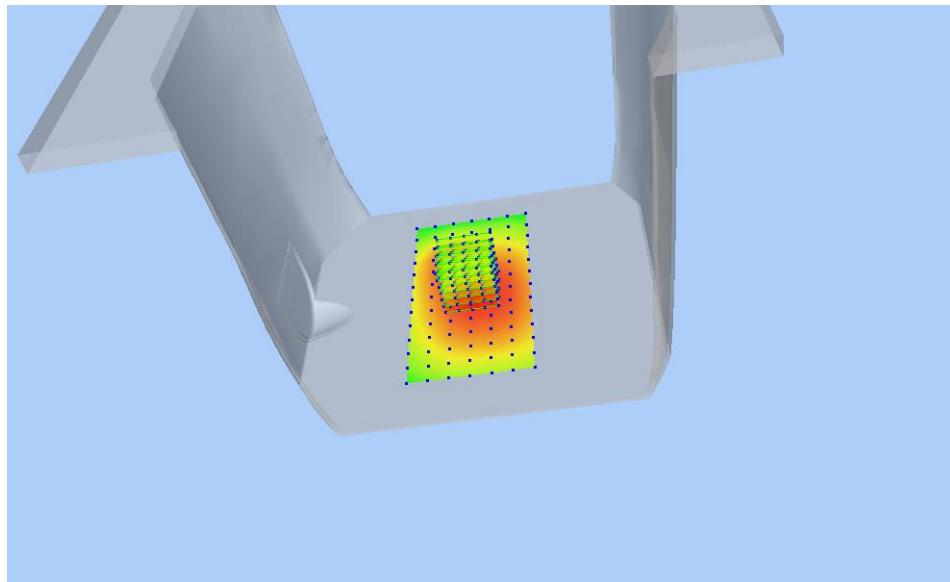
Z Axis Scan



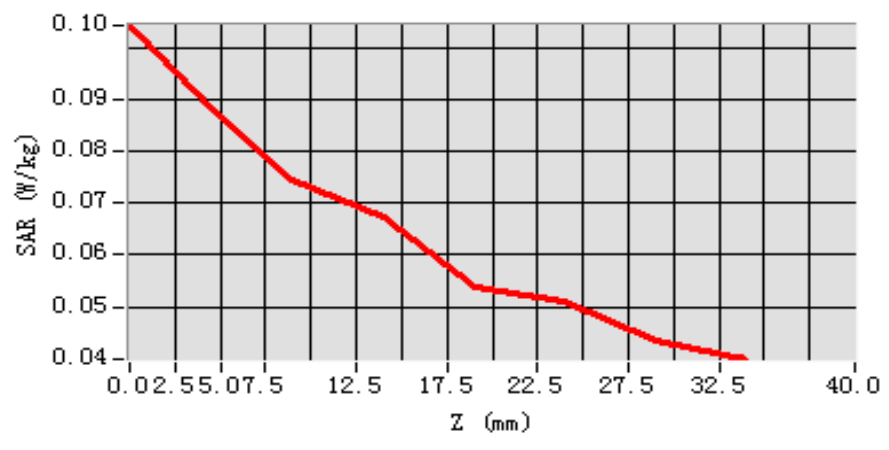
MEAS. 29 Back Side Plane with Back Side on High Channel in LTE Band

17 mode with 1RB

Test Date:	18/5/2016
Measurement duration:	10 minutes 25 seconds
Signal:	LTE, f=711.0 MHz, Duty Cycle: 1:1.0
Liquid Parameters:	Permittivity: 57.21; Conductivity: 0.94 S/m
Test condition:	Ambient Temperature: 22.4°C, Liquid Temperature: 21.6°C
Probe:	SN 34/15 SSE2 EPGO265, ConvF: 1.88
Area Scan:	sam_direct_droit2_surf12mm.txt, h= 5.00 mm
Zoom Scan:	5x5x7,dx=8mm, dy=8mm, dz=5mm,Complete
Maximum location:	X=-4.000000, Y=0.000000
SAR 10g (W/Kg):	0.073387
SAR 1g (W/Kg):	0.087429
Power drift (%):	-3.21
3D screen shot	



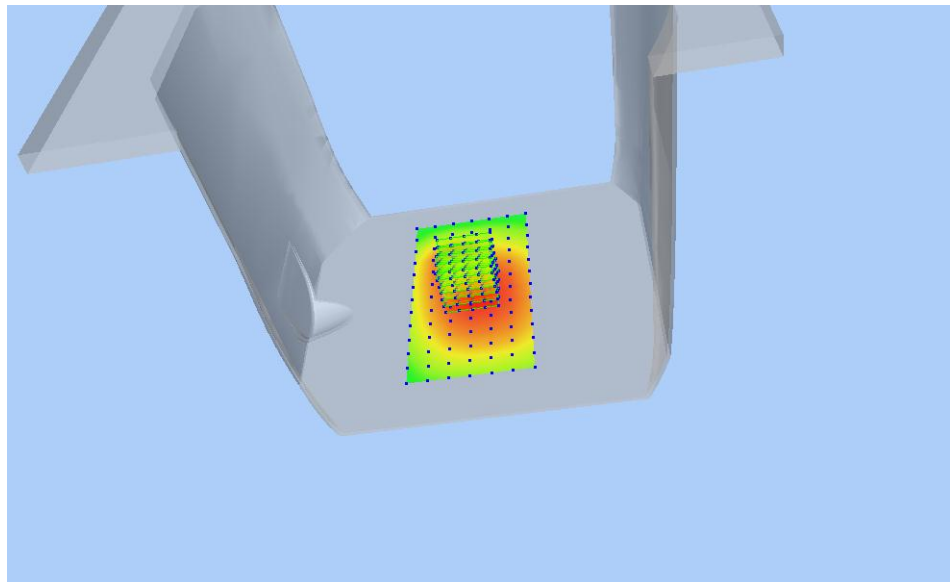
Z Axis Scan



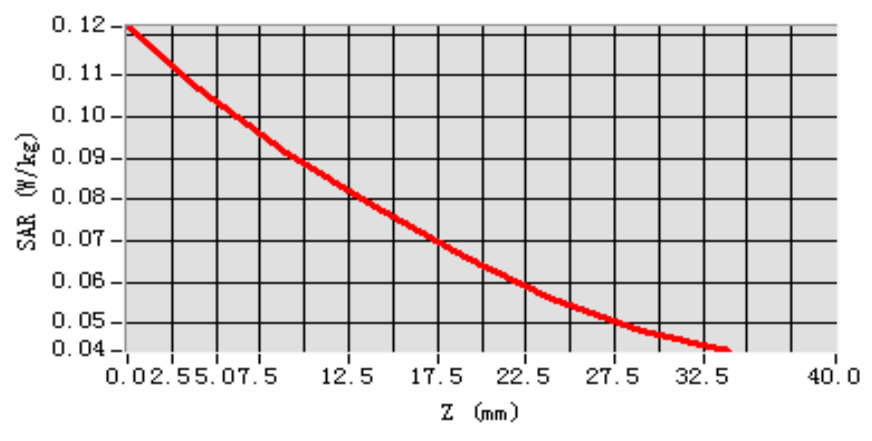
MEAS. 30 Back Side Plane with Back Side on Low Channel in LTE Band

17 mode with 50%RB

Test Date:	18/5/2016
Measurement duration:	10 minutes 25 seconds
Signal:	LTE, f=709.0 MHz, Duty Cycle: 1:1.0
Liquid Parameters:	Permittivity: 57.40; Conductivity: 0.94 S/m
Test condition:	Ambient Temperature: 22.4°C, Liquid Temperature: 21.6°C
Probe:	SN 34/15 SSE2 EPGO265, ConvF: 1.88
Area Scan:	sam_direct_droit2_surf12mm.txt, h= 5.00 mm
Zoom Scan:	5x5x7,dx=8mm, dy=8mm, dz=5mm,Complete
Maximum location:	X=-4.000000, Y=0.000000
SAR 10g (W/Kg):	0.086337
SAR 1g (W/Kg):	0.104948
Power drift (%):	-2.64
3D screen shot	



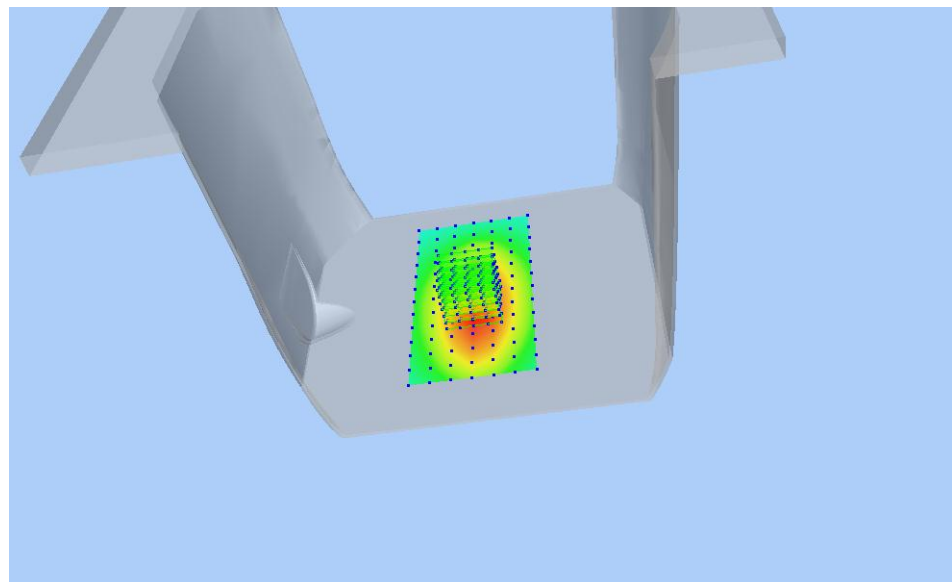
Z Axis Scan



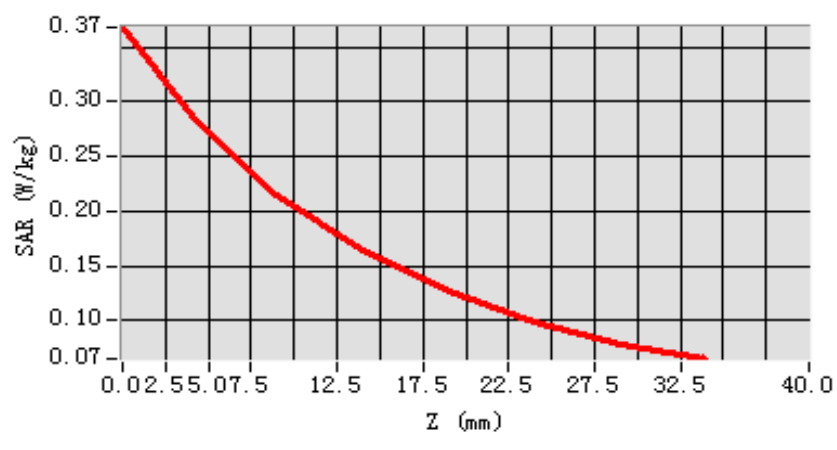
MEAS. 31 Back Side Plane with Left Edge on Low Channel in LTE Band

17 mode with 1RB

Test Date: 18/5/2016
Measurement duration: 10 minutes 18 seconds
Signal: LTE, f=711.0 MHz, Duty Cycle: 1:1.0
Liquid Parameters: Permittivity: 57.21; Conductivity: 0.94 S/m
Test condition: Ambient Temperature: 22.4°C, Liquid Temperature: 21.6°C
Probe: SN 34/15 SSE2 EPGO265, ConvF: 1.88
Area Scan: sam_direct_droit2_surf12mm.txt, h= 5.00 mm
Zoom Scan: 5x5x7,dx=8mm, dy=8mm, dz=5mm,Complete
Maximum location: X=-4.000000, Y=-12.000000
SAR 10g (W/Kg): 0.199706
SAR 1g (W/Kg): 0.278941
Power drift (%): -0.91
3D screen shot



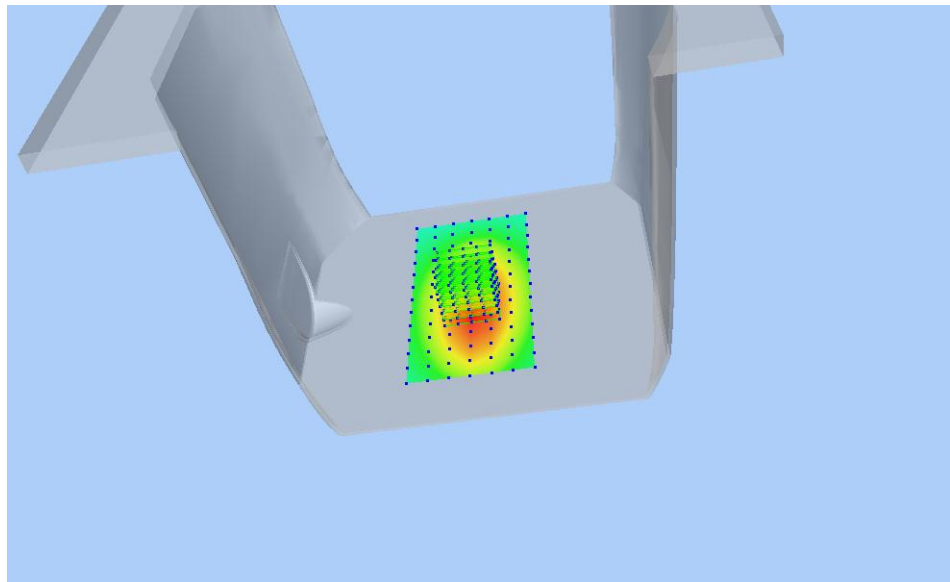
Z Axis Scan



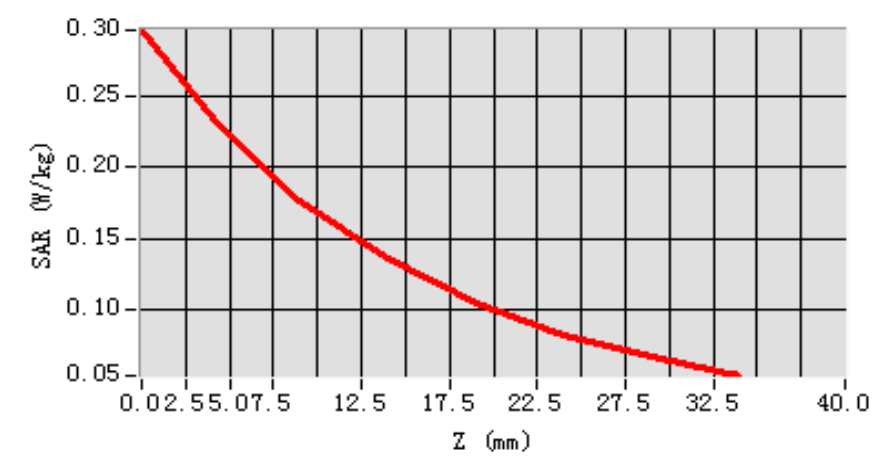
MEAS. 32 Back Side Plane with Left Edge on Low Channel in LTE Band

17 mode with 50%RB

Test Date:	18/5/2016
Measurement duration:	10 minutes 20 seconds
Signal:	LTE, f=709.0 MHz, Duty Cycle: 1:1.0
Liquid Parameters:	Permittivity: 57.40; Conductivity: 0.94 S/m
Test condition:	Ambient Temperature: 22.4°C, Liquid Temperature: 21.6°C
Probe:	SN 34/15 SSE2 EPGO265, ConvF: 1.88
Area Scan:	sam_direct_droit2_surf12mm.txt, h= 5.00 mm
Zoom Scan:	5x5x7,dx=8mm, dy=8mm, dz=5mm,Complete
Maximum location:	X=-4.000000, Y=-12.000000
SAR 10g (W/Kg):	0.163984
SAR 1g (W/Kg):	0.226631
Power drift (%):	-0.95
3D screen shot	



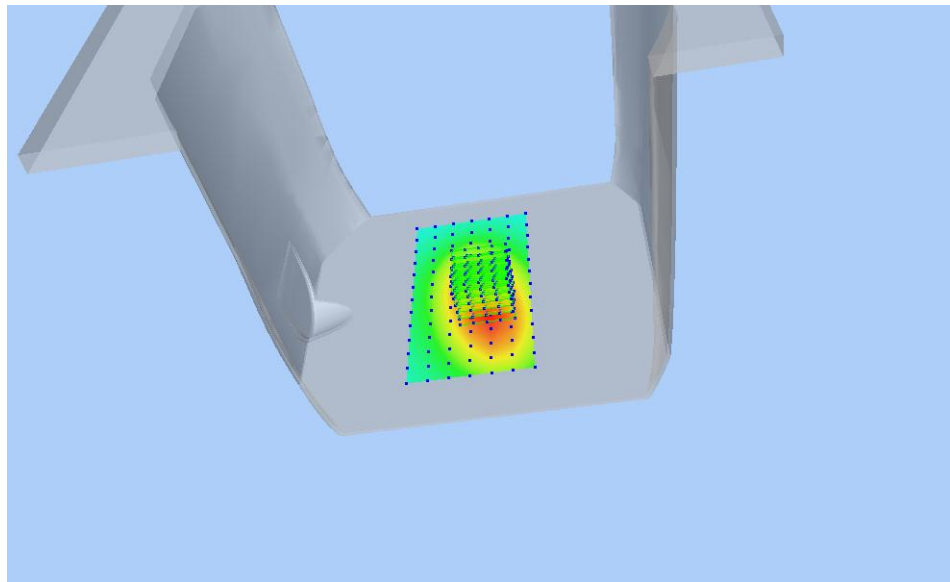
Z Axis Scan



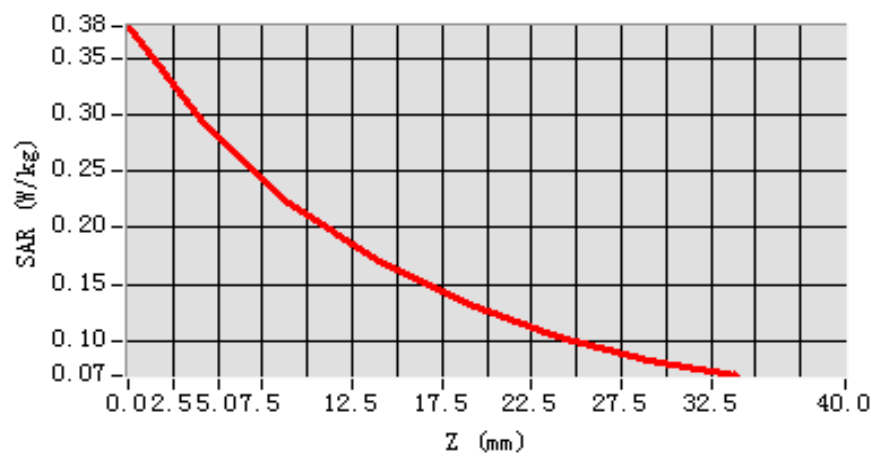
MEAS. 33 Back Side Plane with Right Edge on High Channel in LTE Band

17 mode with 1RB

Test Date:	18/5/2016
Measurement duration:	11 minutes 46 seconds
Signal:	LTE, f=711.0 MHz, Duty Cycle: 1:1.0
Liquid Parameters:	Permittivity: 57.21; Conductivity: 0.94 S/m
Test condition:	Ambient Temperature: 22.4°C, Liquid Temperature: 21.6°C
Probe:	SN 34/15 SSE2 EPGO265, ConvF: 1.88
Area Scan:	sam_direct_droit2_surf12mm.txt, h= 5.00 mm
Zoom Scan:	5x5x7,dx=8mm, dy=8mm, dz=5mm,Complete
Maximum location:	X=8.000000, Y=-12.000000
SAR 10g (W/Kg):	0.205734
SAR 1g (W/Kg):	0.286683
Power drift (%):	-0.96
3D screen shot	



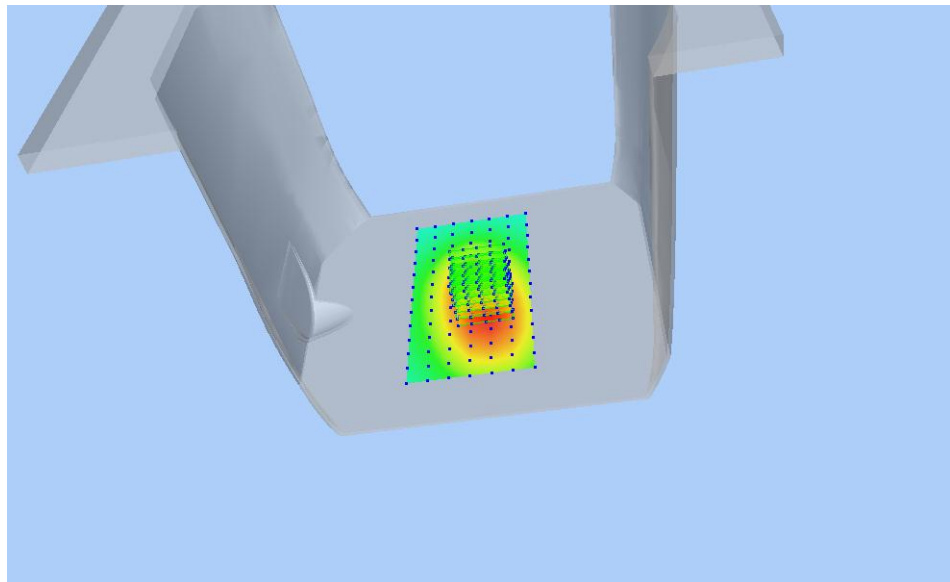
Z Axis Scan



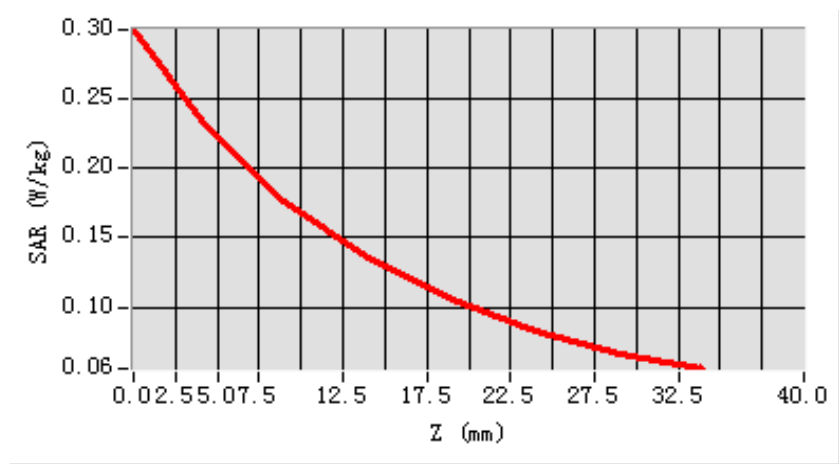
MEAS. 34 Back Side Plane with Right Edge on Low Channel in LTE Band

17 mode with 50%RB

Test Date:	18/5/2016
Measurement duration:	11 minutes 32 seconds
Signal:	LTE, f=709.0 MHz, Duty Cycle: 1:1.0
Liquid Parameters:	Permittivity: 57.40; Conductivity: 0.94 S/m
Test condition:	Ambient Temperature: 22.4°C, Liquid Temperature: 21.6°C
Probe:	SN 34/15 SSE2 EPGO265, ConvF: 1.88
Area Scan:	sam_direct_droit2_surf12mm.txt, h= 5.00 mm
Zoom Scan:	5x5x7,dx=8mm, dy=8mm, dz=5mm,Complete
Maximum location:	X=8.000000, Y=-12.000000
SAR 10g (W/Kg):	0.164283
SAR 1g (W/Kg):	0.227204
Power drift (%):	-4.53
3D screen shot	



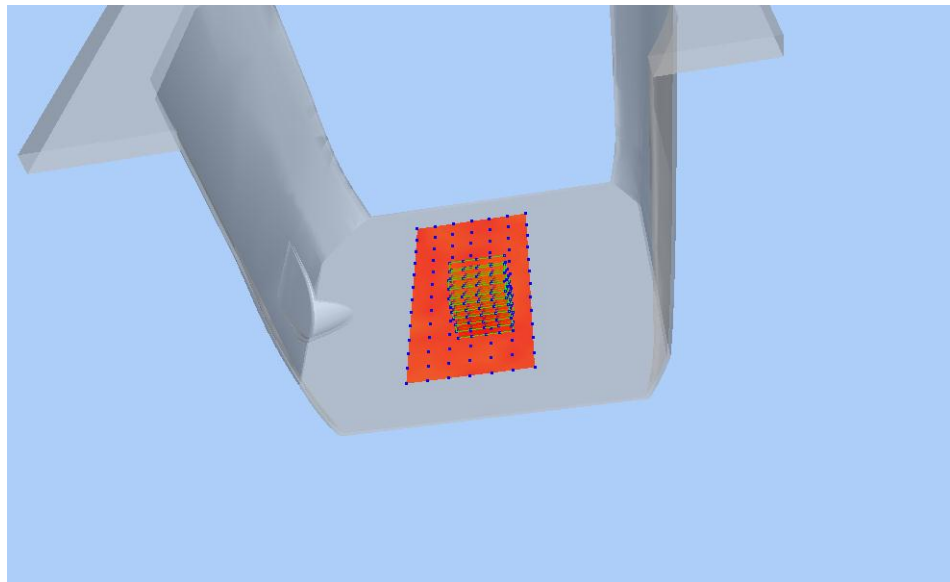
Z Axis Scan



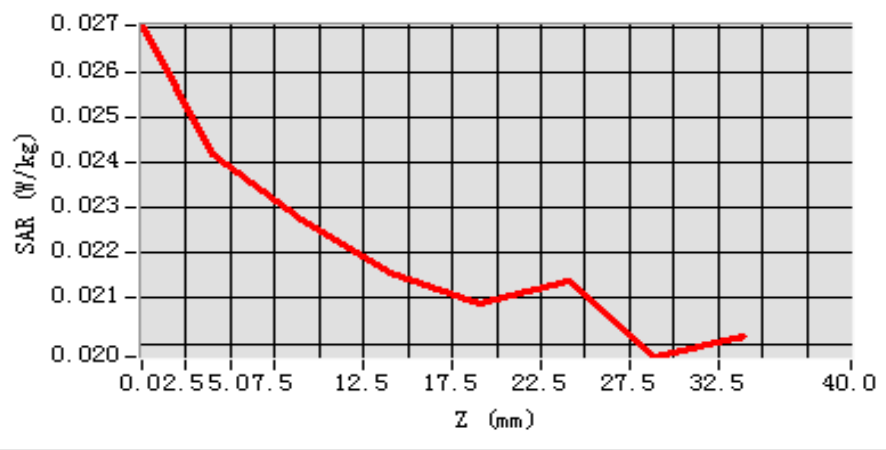
MEAS. 35 Back Side Plane with Bottom Edge on High Channel in LTE

Band 17 mode with 1RB

Test Date: 18/5/2016
Measurement duration: 11 minutes 29 seconds
Signal: LTE, f=711.0 MHz, Duty Cycle: 1:1.0
Liquid Parameters: Permittivity: 57.21; Conductivity: 0.94 S/m
Test condition: Ambient Temperature: 22.4°C, Liquid Temperature: 21.6°C
Probe: SN 34/15 SSE2 EPGO265, ConvF: 1.88
Area Scan: sam_direct_droit2_surf12mm.txt, h= 5.00 mm
Zoom Scan: 5x5x7,dx=8mm, dy=8mm, dz=5mm,Complete
Maximum location: X=8.000000, Y=-24.000000
SAR 10g (W/Kg): 0.022250
SAR 1g (W/Kg): 0.024413
Power drift (%): -2.38
3D screen shot



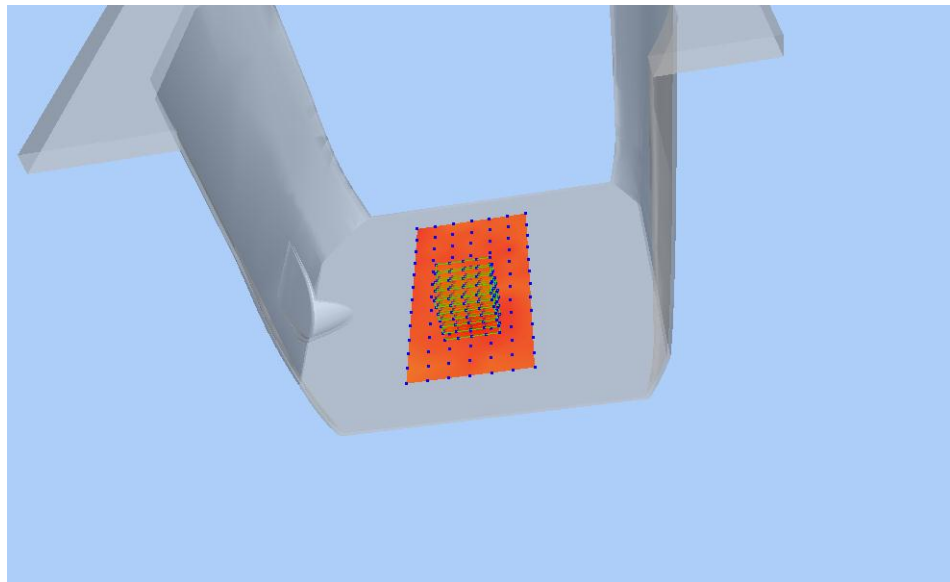
Z Axis Scan



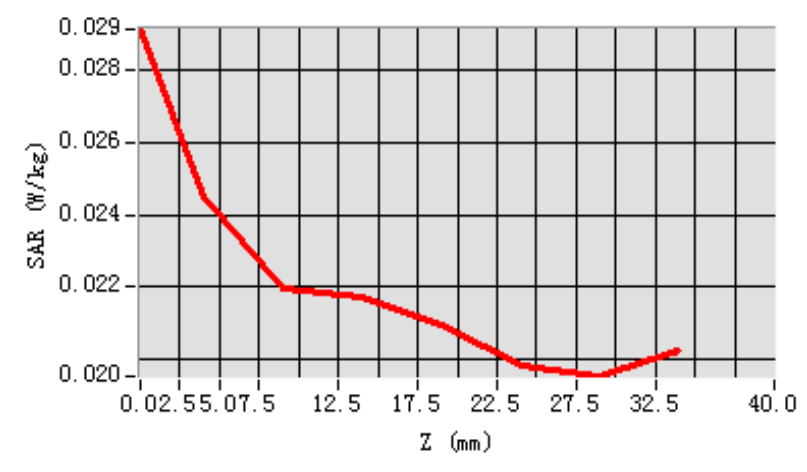
MEAS. 36 Back Side Plane with Bottom Edge on Low Channel in LTE

Band 17 mode with 50%RB

Test Date: 18/5/2016
Measurement duration: 10 minutes 14 seconds
Signal: LTE, f=709.0 MHz, Duty Cycle: 1:1.0
Liquid Parameters: Permittivity: 57.40; Conductivity: 0.94 S/m
Test condition: Ambient Temperature: 22.4°C, Liquid Temperature: 21.6°C
Probe: SN 34/15 SSE2 EPGO265, ConvF: 1.88
Area Scan: sam_direct_droit2_surf12mm.txt, h= 5.00 mm
Zoom Scan: 5x5x7,dx=8mm, dy=8mm, dz=5mm,Complete
Maximum location: X=-4.000000, Y=-24.000000
SAR 10g (W/Kg): 0.022364
SAR 1g (W/Kg): 0.024710
Power drift (%): -3.94
3D screen shot

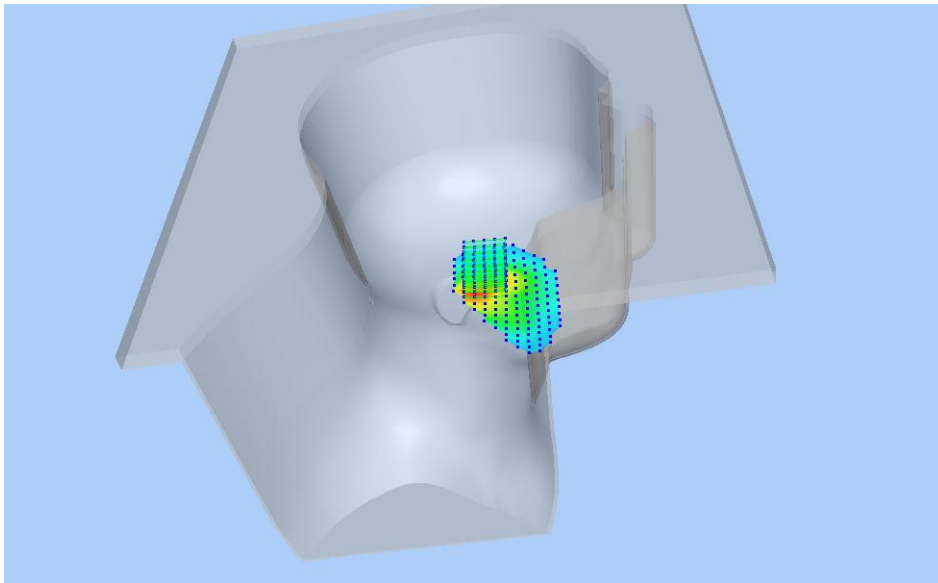


Z Axis Scan

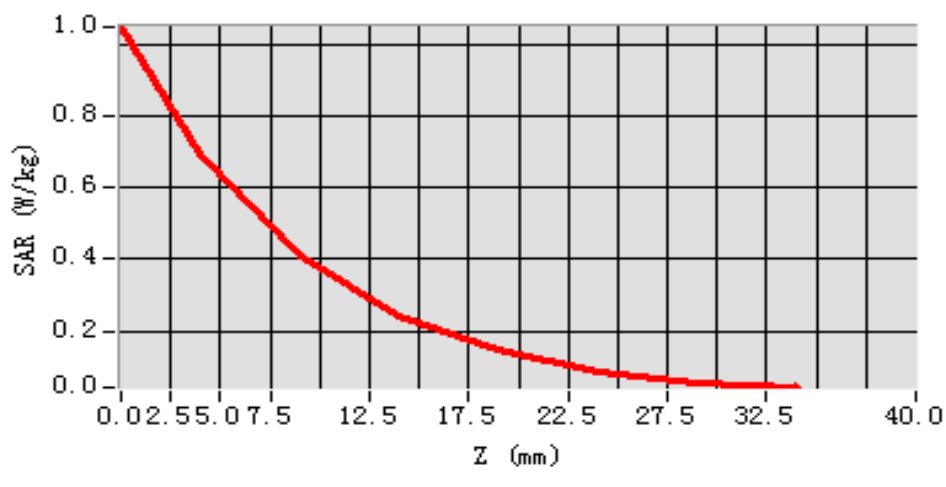


MEAS. 37 Left Head with Cheek on Low Channel in IEEE 802.11 b mode

Test Date: 21/5/2016
Measurement duration: 14 minutes 38 seconds
Signal: WLAN, f=2412.0 MHz, Duty Cycle: 1:1.0
Liquid Parameters: Permittivity: 40.95; Conductivity: 1.78 S/m
Test condition: Ambient Temperature: 22.8°C, Liquid Temperature: 21.3°C
Probe: SN 34/15 SSE2 EPGO265, ConvF: 2.47
Area Scan: sam_direct_droit2_surf8mm.txt, h= 5.00 mm
Zoom Scan: 7x7x7,dx=5mm, dy=5mm, dz=5mm,Complete
Maximum location: X=-8.000000, Y=8.000000
SAR 10g (W/Kg): 0.361468
SAR 1g (W/Kg): 0.659165
Power drift (%): 0.38
3D screen shot

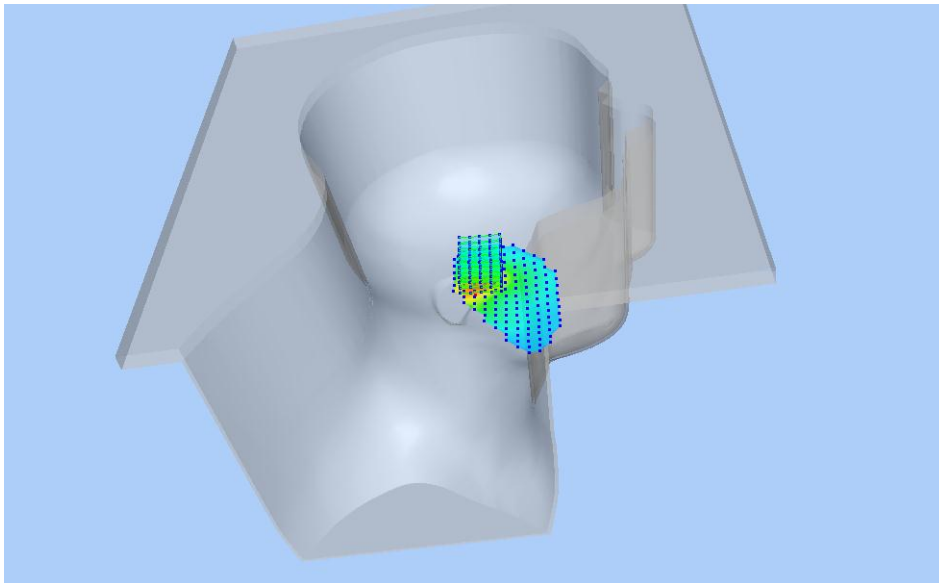


Z Axis Scan

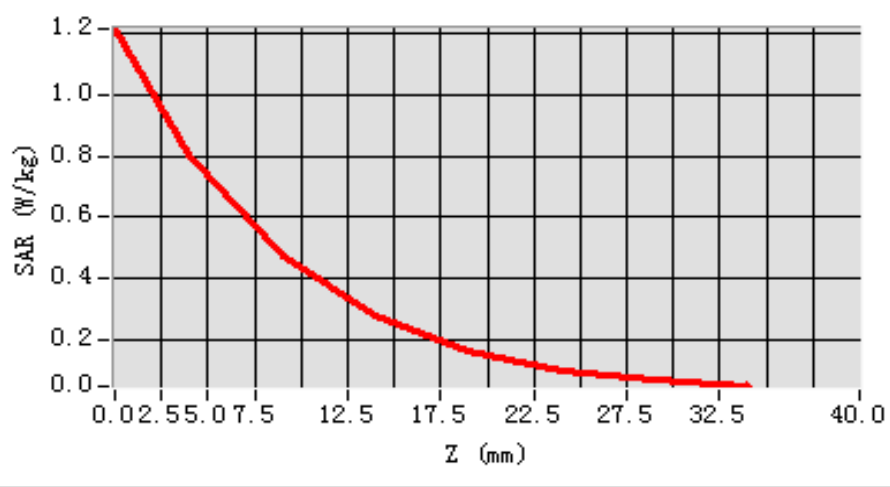


MEAS. 38 Left Head with Tilt on Low Channel in IEEE 802.11 b mode

Test Date: 21/5/2016
Measurement duration: 15 minutes 8 seconds
Signal: WLAN, f=2412.0 MHz, Duty Cycle: 1:1.0
Liquid Parameters: Permittivity: 40.95; Conductivity: 1.78 S/m
Test condition: Ambient Temperature: 22.8°C, Liquid Temperature: 21.3°C
Probe: SN 34/15 SSE2 EPGO265, ConvF: 2.47
Area Scan: sam_direct_droit2_surf8mm.txt, h= 5.00 mm
Zoom Scan: 7x7x7,dx=5mm, dy=5mm, dz=5mm,Complete
Maximum location: X=-8.000000, Y=16.000000
SAR 10g (W/Kg): 0.393956
SAR 1g (W/Kg): 0.748371
Power drift (%): -0.17
3D screen shot

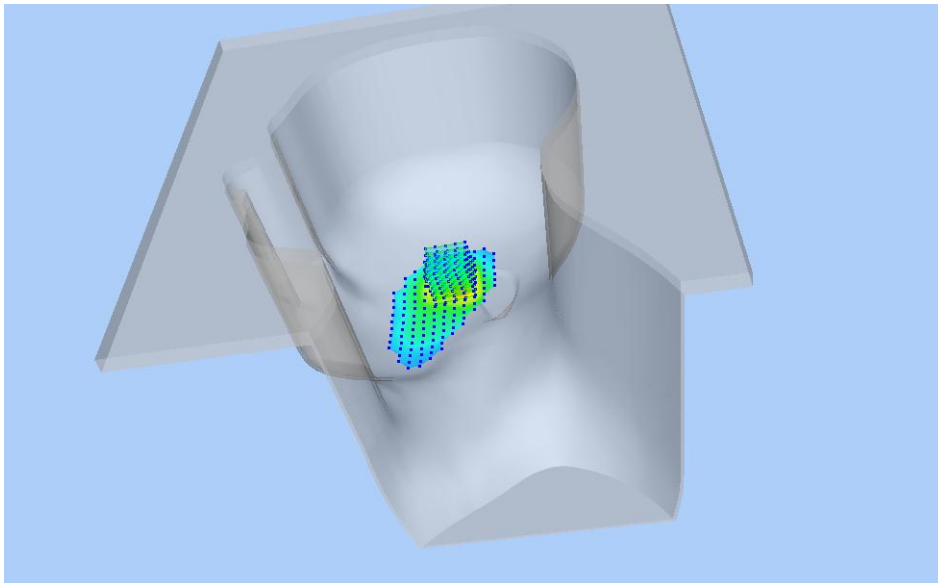


Z Axis Scan

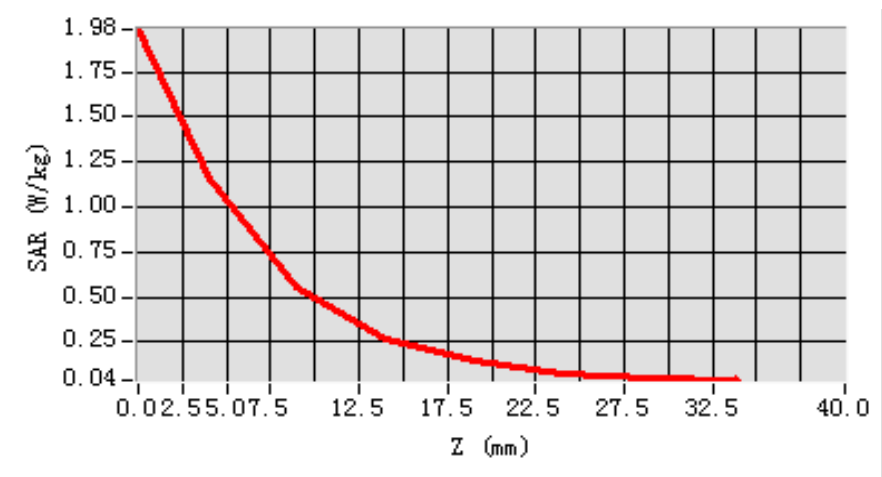


MEAS. 39 Right Head with Cheek on Low Channel in IEEE 802.11 b mode

Test Date: 21/5/2016
Measurement duration: 15 minutes 10 seconds
Signal: WLAN, f=2412.0 MHz, Duty Cycle: 1:1.0
Liquid Parameters: Permittivity: 40.95; Conductivity: 1.78 S/m
Test condition: Ambient Temperature: 22.8°C, Liquid Temperature: 21.3°C
Probe: SN 34/15 SSE2 EPGO265, ConvF: 2.47
Area Scan: sam_direct_droit2_surf8mm.txt, h= 5.00 mm
Zoom Scan: 7x7x7,dx=5mm, dy=5mm, dz=5mm,Complete
Maximum location: X=-16.000000, Y=8.000000
SAR 10g (W/Kg): 0.528407
SAR 1g (W/Kg): 0.985254
Power drift (%): -0.01
3D screen shot



Z Axis Scan

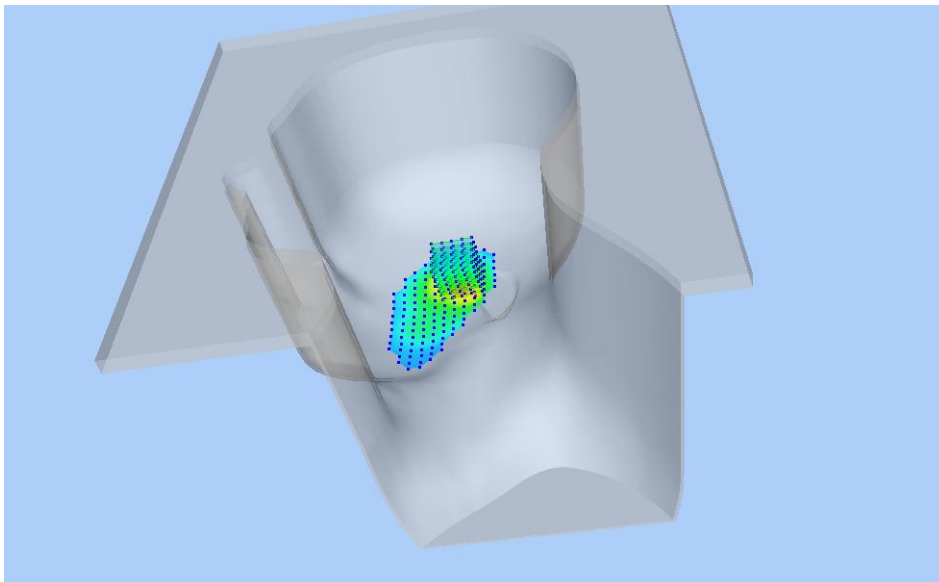


MEAS. 40 Right Head with Cheek on Middle Channel in IEEE 802.11 b

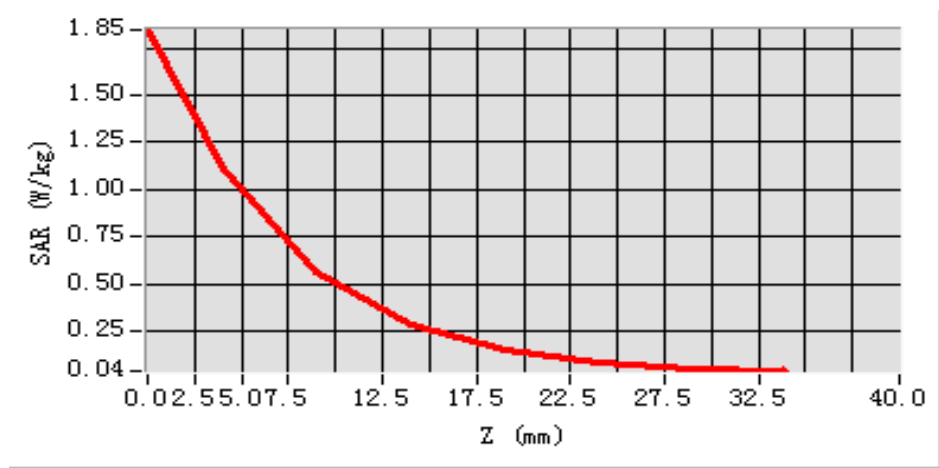
mode

Test Date: 21/5/2016
Measurement duration: 15 minutes 11 seconds
Signal: WLAN, f=2437.0 MHz, Duty Cycle: 1:1.0
Liquid Parameters: Permittivity: 40.44; Conductivity: 1.82 S/m
Test condition: Ambient Temperature: 22.8°C, Liquid Temperature: 21.3°C
Probe: SN 34/15 SSE2 EPGO265, ConvF: 2.47
Area Scan: sam_direct_droit2_surf8mm.txt, h= 5.00 mm
Zoom Scan: 7x7, dx=5mm, dy=5mm, dz=5mm, Complete
Maximum location: X=-8.000000, Y=16.000000
SAR 10g (W/Kg): 0.553992
SAR 1g (W/Kg): 0.996426
Power drift (%): 0.23

3D screen shot



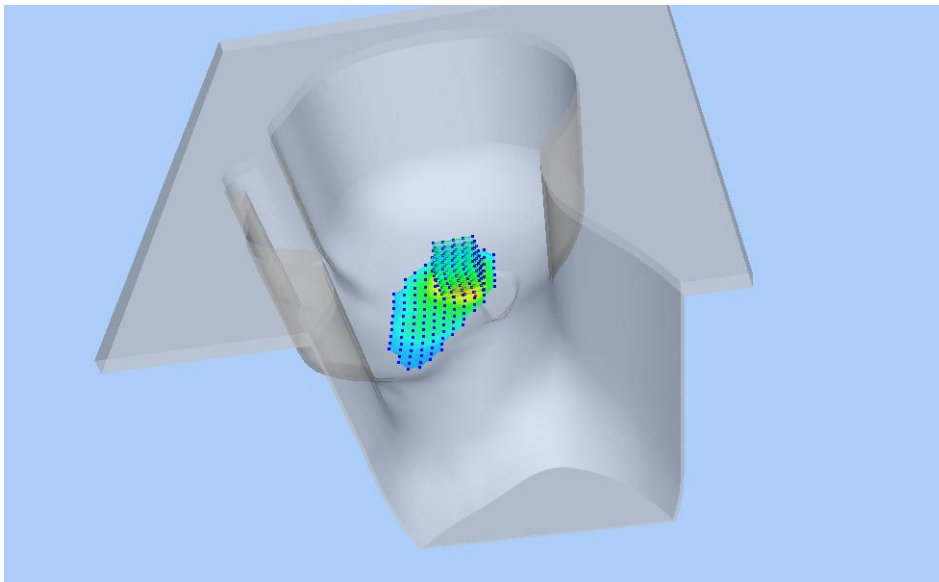
Z Axis Scan



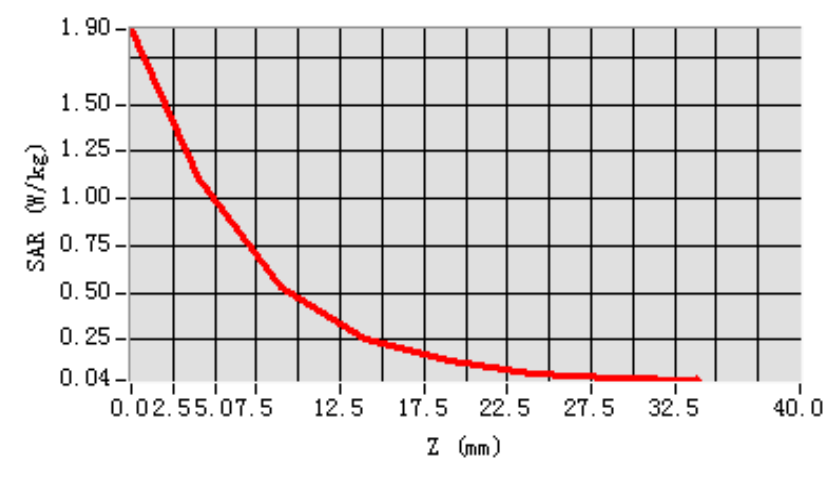
MEAS. 41 Right Head with Cheek on High Channel in IEEE 802.11 b

mode

Test Date: 21/5/2016
Measurement duration: 15 minutes 10 seconds
Signal: WLAN, f=2462.0 MHz, Duty Cycle: 1:1.0
Liquid Parameters: Permittivity: 40.11; Conductivity: 1.85 S/m
Test condition: Ambient Temperature: 22.8°C, Liquid Temperature: 21.3°C
Probe: SN 34/15 SSE2 EPGO265, ConvF: 2.47
Area Scan: sam_direct_droit2_surf8mm.txt, h= 5.00 mm
Zoom Scan: 7x7x7,dx=5mm, dy=5mm, dz=5mm,Complete
Maximum location: X=-8.000000, Y=16.000000
SAR 10g (W/Kg): 0.525027
SAR 1g (W/Kg): 0.987785
Power drift (%): -0.20
3D screen shot

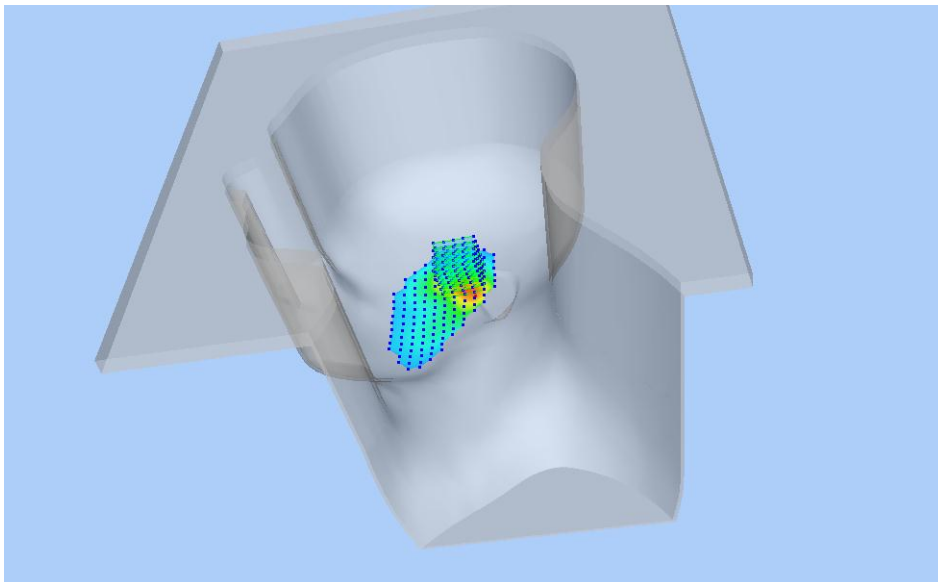


Z Axis Scan

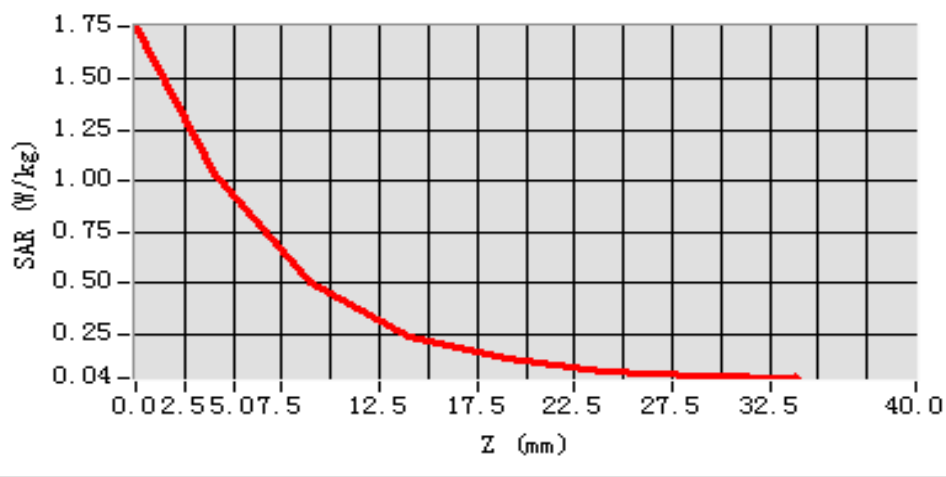


MEAS. 42 Right Head with Tilt on Low Channel in IEEE 802.11 b mode

Test Date: 21/5/2016
Measurement duration: 15 minutes 8 seconds
Signal: WLAN, f=2412.0 MHz, Duty Cycle: 1:1.0
Liquid Parameters: Permittivity: 40.95; Conductivity: 1.78 S/m
Test condition: Ambient Temperature: 22.8°C, Liquid Temperature: 21.3°C
Probe: SN 34/15 SSE2 EPGO265, ConvF: 2.47
Area Scan: sam_direct_droit2_surf8mm.txt, h= 5.00 mm
Zoom Scan: 7x7x7,dx=5mm, dy=5mm, dz=5mm,Complete
Maximum location: X=-8.000000, Y=16.000000
SAR 10g (W/Kg): 0.468866
SAR 1g (W/Kg): 0.948302
Power drift (%): -0.50
3D screen shot



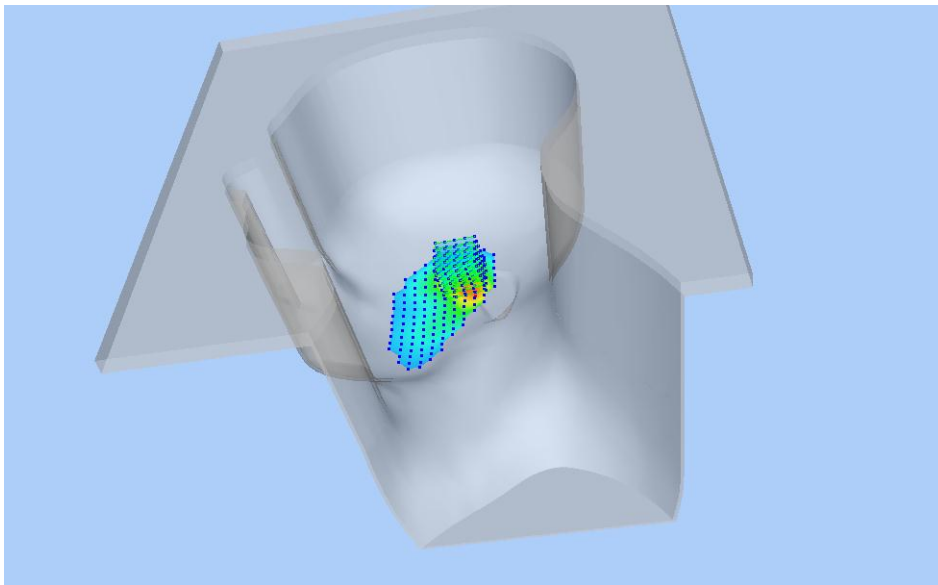
Z Axis Scan



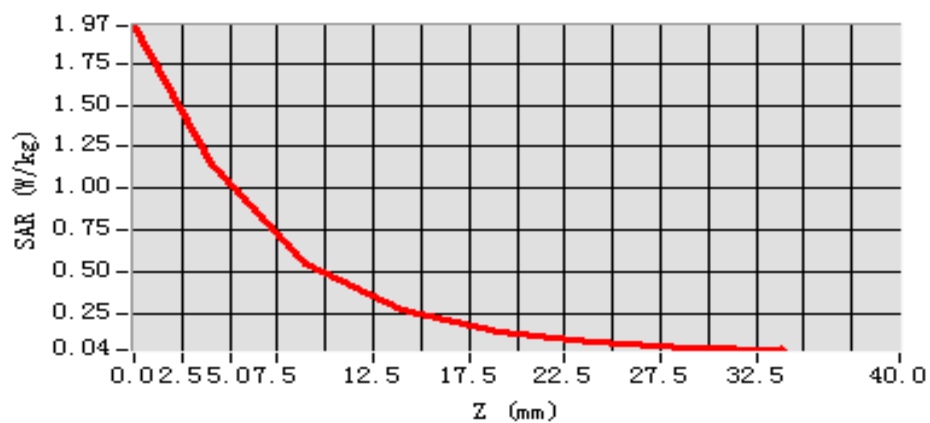
MEAS. 43 Right Head with Tilt on Middle Channel in IEEE 802.11 b

mode

Test Date:	21/5/2016
Measurement duration:	14 minutes 51 seconds
Signal:	WLAN, f=2437.0 MHz, Duty Cycle: 1:1.0
Liquid Parameters:	Permittivity: 40.44; Conductivity: 1.82 S/m
Test condition:	Ambient Temperature: 22.8°C, Liquid Temperature: 21.3°C
Probe:	SN 34/15 SSE2 EPGO265, ConvF: 2.47
Area Scan:	sam_direct_droit2_surf8mm.txt, h= 5.00 mm
Zoom Scan:	7x7x7,dx=5mm, dy=5mm, dz=5mm,Complete
Maximum location:	X=-8.000000, Y=16.000000
SAR 10g (W/Kg):	0.546324
SAR 1g (W/Kg):	1.000258
Power drift (%):	-0.33
3D screen shot	

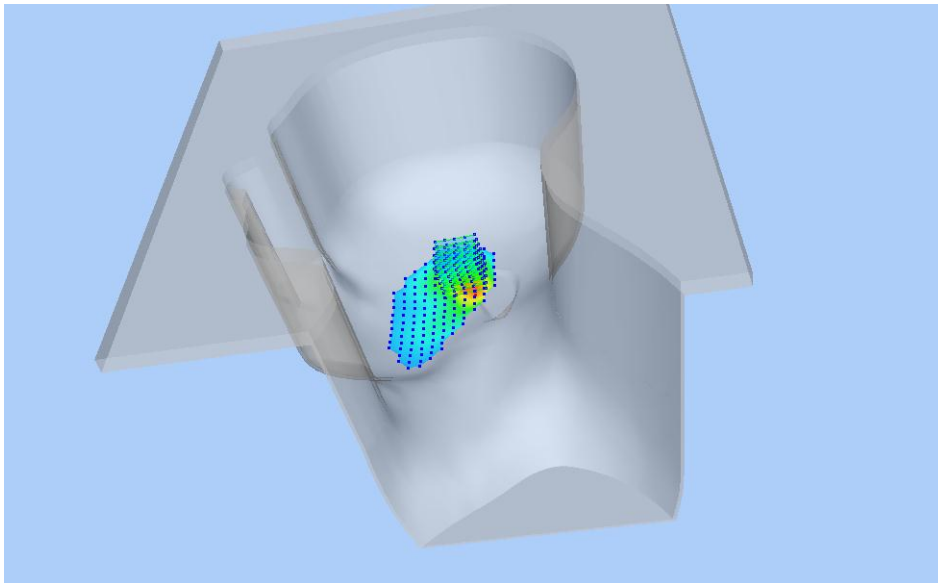


Z Axis Scan

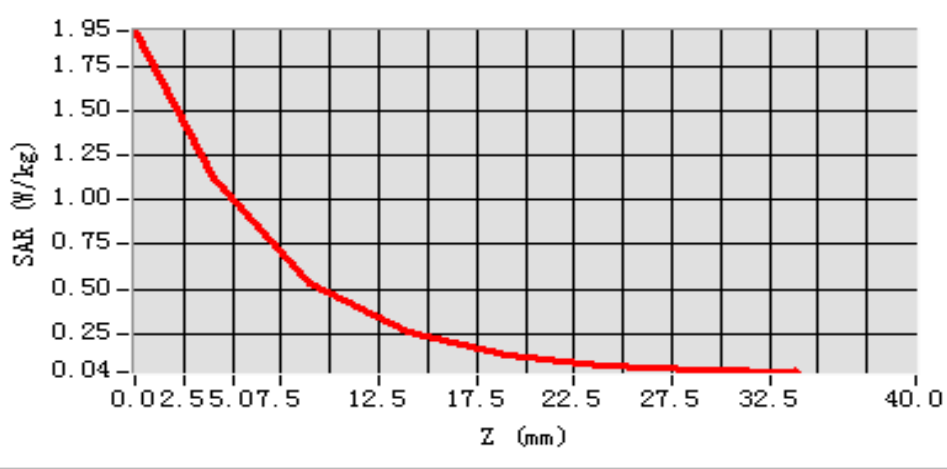


MEAS. 44 Right Head with Tilt on High Channel in IEEE 802.11 b mode

Test Date: 21/5/2016
Measurement duration: 14 minutes 56 seconds
Signal: WLAN, f=2462.0 MHz, Duty Cycle: 1:1.0
Liquid Parameters: Permittivity: 40.31; Conductivity: 1.83 S/m
Test condition: Ambient Temperature: 22.8°C, Liquid Temperature: 21.3°C
Probe: SN 34/15 SSE2 EPGO265, ConvF: 2.47
Area Scan: sam_direct_droit2_surf8mm.txt, h= 5.00 mm
Zoom Scan: 7x7x7,dx=5mm, dy=5mm, dz=5mm,Complete
Maximum location: X=-8.000000, Y=16.000000
SAR 10g (W/Kg): 0.507618
SAR 1g (W/Kg): 0.998255
Power drift (%): -0.75
3D screen shot



Z Axis Scan

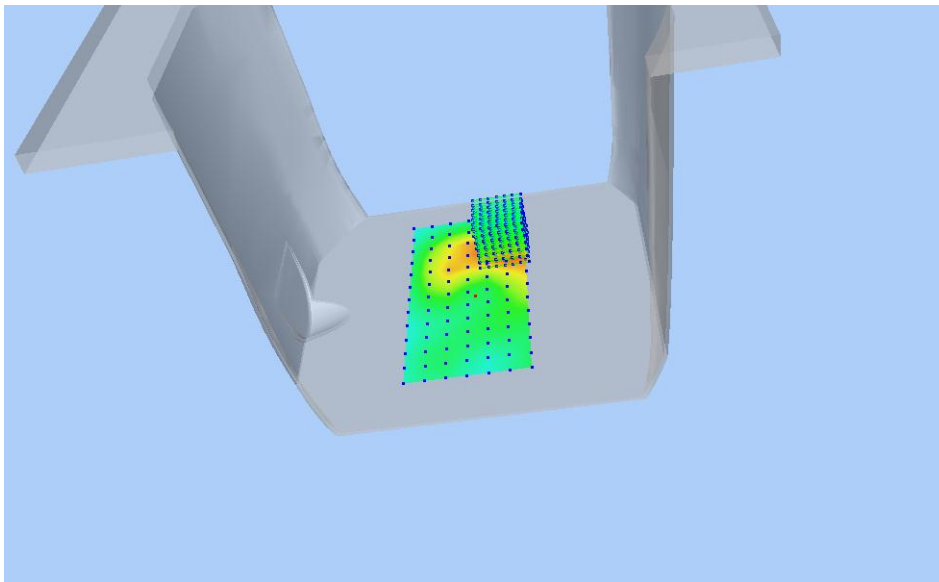


MEAS. 45 Body Plane with Front Side on Low Channel in IEEE 802.11 b

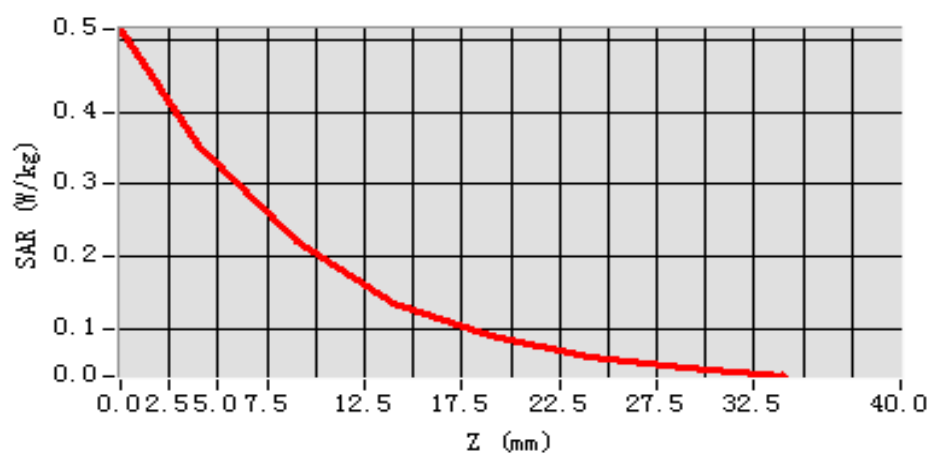
mode

Test Date: 21/5/2016
Measurement duration: 17 minutes 36 seconds
Signal: WLAN, f=2412.0 MHz, Duty Cycle: 1:1.0
Liquid Parameters: Permittivity: 52.16; Conductivity: 1.94 S/m
Test condition: Ambient Temperature: 22.8°C, Liquid Temperature: 21.3°C
Probe: SN 34/15 SSE2 EPGO265, ConvF: 2.55
Area Scan: sam_direct_droit2_surf12mm.txt, h= 5.00 mm
Zoom Scan: 7x7x7,dx=5mm, dy=5mm, dz=5mm,Complete
Maximum location: X=20.000000, Y=36.000000
SAR 10g (W/Kg): 0.201315
SAR 1g (W/Kg): 0.335266
Power drift (%): -2.98

3D screen shot



Z Axis Scan

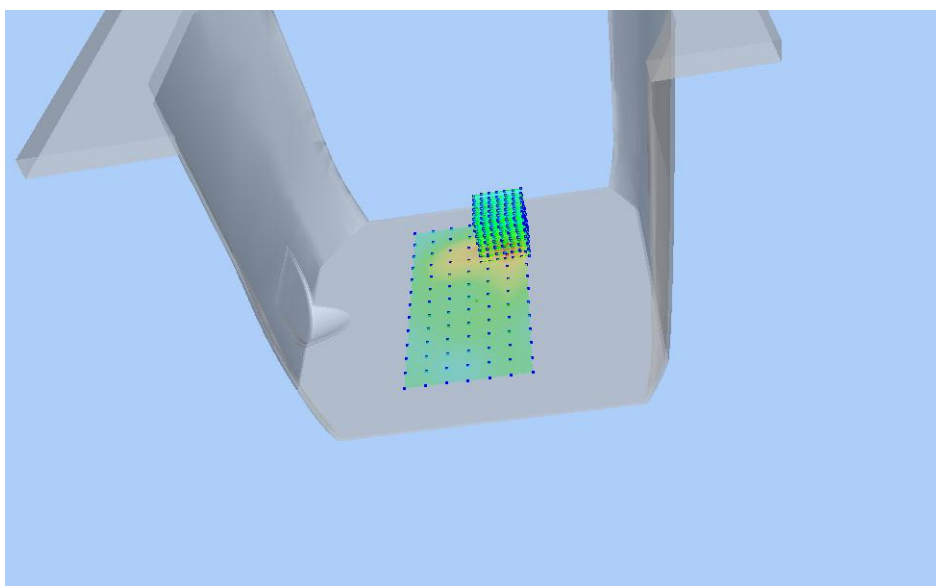


MEAS. 46 Body Plane with Back Side on Low Channel in IEEE 802.11 b

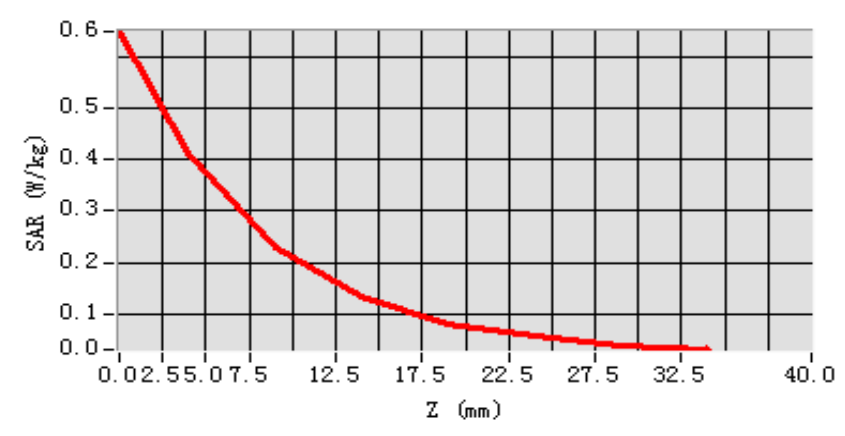
mode

Test Date: 21/5/2016
Measurement duration: 17 minutes 44 seconds
Signal: WLAN, f=2412.0 MHz, Duty Cycle: 1:1.0
Liquid Parameters: Permittivity: 52.16; Conductivity: 1.94 S/m
Test condition: Ambient Temperature: 22.8°C, Liquid Temperature: 21.3°C
Probe: SN 34/15 SSE2 EPGO265, ConvF: 2.55
Area Scan: sam_direct_droit2_surf12mm.txt, h= 5.00 mm
Zoom Scan: 7x7x7,dx=5mm, dy=5mm, dz=5mm,Complete
Maximum location: X=20.000000, Y=48.000000
SAR 10g (W/Kg): 0.199350
SAR 1g (W/Kg): 0.378791
Power drift (%): -0.77

3D screen shot



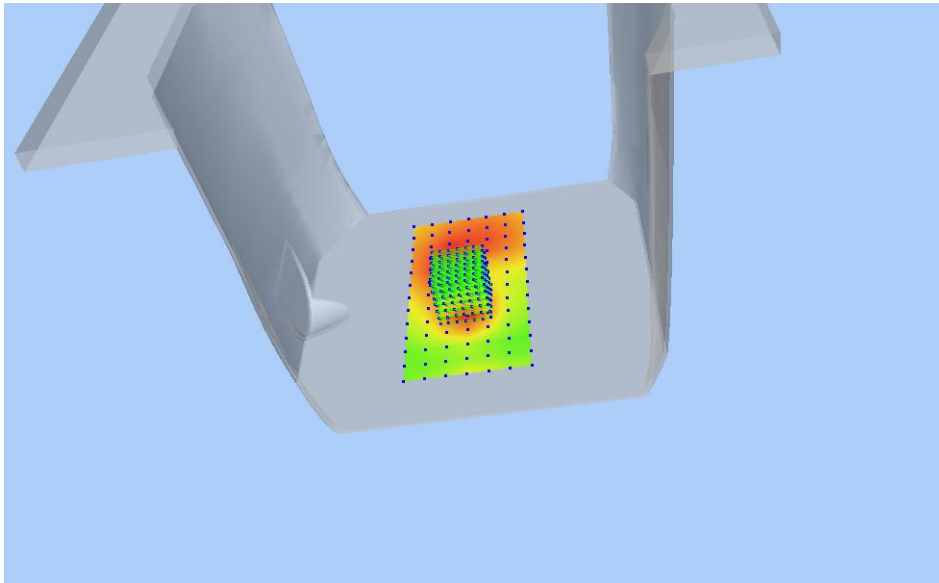
Z Axis Scan



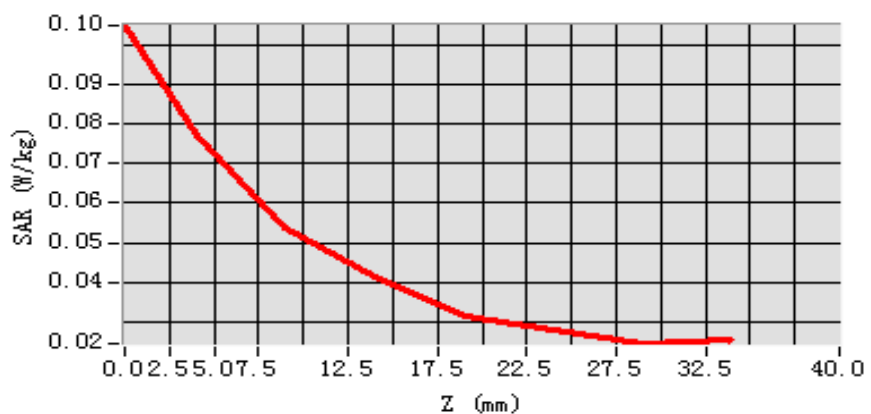
MEAS. 47 Body Plane with Right Edge on Low Channel in IEEE 802.11 b

mode

Test Date: 21/5/2016
Measurement duration: 14 minutes 22 seconds
Signal: WLAN, f=2412.0 MHz, Duty Cycle: 1:1.0
Liquid Parameters: Permittivity: 52.16; Conductivity: 1.94 S/m
Test condition: Ambient Temperature: 22.8°C, Liquid Temperature: 21.3°C
Probe: SN 34/15 SSE2 EPGO265, ConvF: 2.55
Area Scan: sam_direct_droit2_surf12mm.txt, h= 5.00 mm
Zoom Scan: 7x7x7,dx=5mm, dy=5mm, dz=5mm,Complete
Maximum location: X=-4.000000, Y=-12.000000
SAR 10g (W/Kg): 0.051020
SAR 1g (W/Kg): 0.073116
Power drift (%): -1.62
3D screen shot



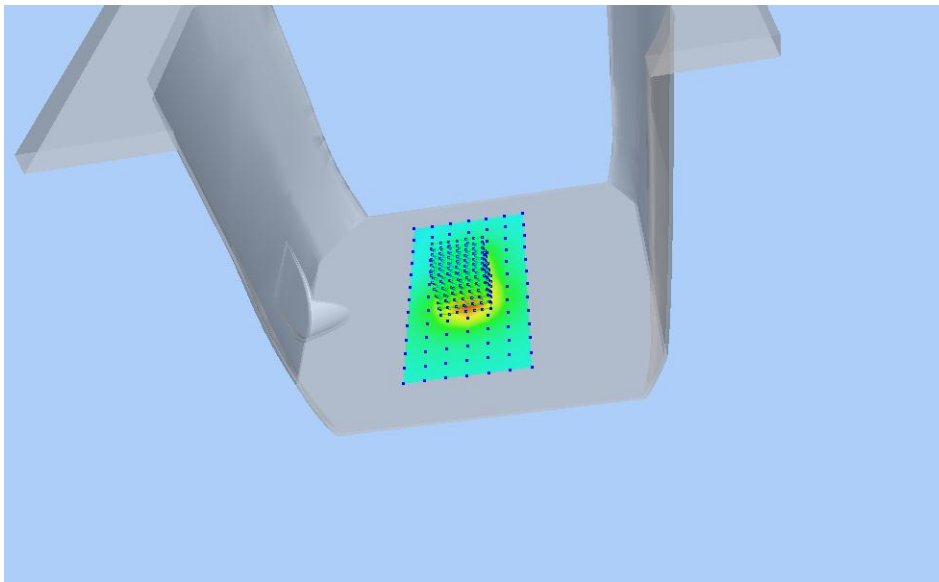
Z Axis Scan



MEAS. 48 Body Plane with Top Edge on Low Channel in IEEE 802.11 b

mode

Test Date: 21/5/2016
Measurement duration: 14 minutes 23 seconds
Signal: WLAN, f=2412.0 MHz, Duty Cycle: 1:1.0
Liquid Parameters: Permittivity: 52.16; Conductivity: 1.94 S/m
Test condition: Ambient Temperature: 22.8°C, Liquid Temperature: 21.3°C
Probe: SN 34/15 SSE2 EPGO265, ConvF: 2.55
Area Scan: sam_direct_droit2_surf12mm.txt, h= 5.00 mm
Zoom Scan: 7x7x7,dx=5mm, dy=5mm, dz=5mm,Complete
Maximum location: X=-4.000000, Y=0.000000
SAR 10g (W/Kg): 0.235149
SAR 1g (W/Kg): 0.424421
Power drift (%): -0.17
3D screen shot



Z Axis Scan

