

The logo for orbic AIRSURF WI-FI is displayed on a dark blue background. The word "orbic" is in white lowercase letters, with a yellow-green circle partially overlapping the letter 'o'. To the right of "orbic" is a registered trademark symbol (®). Below "orbic" is the word "AIRSURF" in yellow uppercase letters. To the right of "AIRSURF" is the text "WI-FI" in white uppercase letters. The background features faint, overlapping circles in shades of blue and yellow-green.

orbic[®]
AIRSURF
WI-FI

**Quick
Start
Guide**

Index

| | |
|---|----|
| Package content | 3 |
| Device Overview | 4 |
| Charge your Orbic Airsurf Wi-Fi PC | 5 |
| Updates management | 6 |
| Windows 11 | 6 |
| Features | 7 |
| Technical datasheet | 8 |
| Use Orbic standard safety information | 10 |
| Support & More | 11 |



Package Content

Verify that the following items are included in the package:



1X Orbic Airsurf Wi-Fi PC

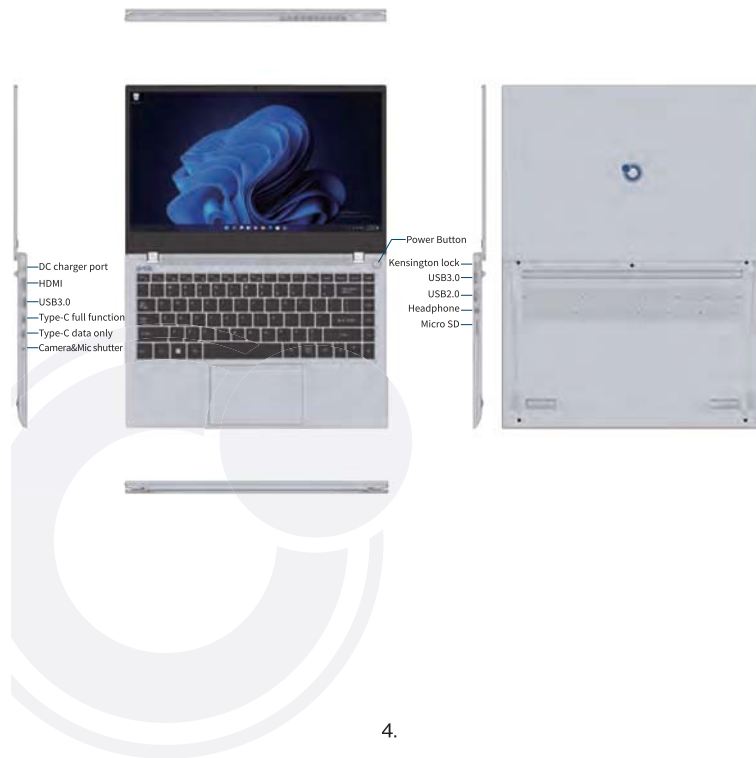
1X Power Adapter

1X Quick Start Guide

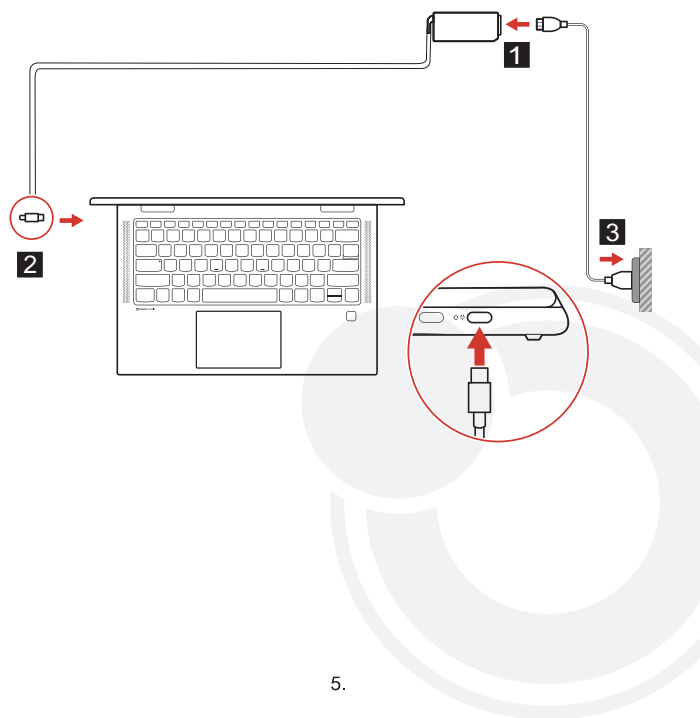
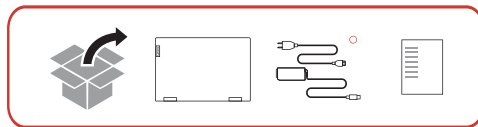
If any of the items are missing or damaged, please contact manufacturer immediately and save the entire package for transport.

Device Overview

Thank you for purchasing Orbic Airsurf Wi-Fi PC



Charge Your Orbic Airsurf Wi-Fi PC



5.

Update Management

During software updates or during download operations do not remove the power supply as it may cause irreversible data loss. Any tampering with the software may generate additional costs for recovery.

Windows 11

Start

Press and release the power button for 1 second. (Note: if there is no response when you press the power button, the device battery may need to be charged).

Power OFF / Reboot

From the Start screen, press the Power button > Standby / Power OFF / Reboot

Lock the Screen

Press the power button.

Wi-Fi Connection

Select the network icon on the taskbar, select the desired Wi-Fi network, connect, then type the password and follow the instructions.

Bluetooth 5.1

Using your Orbic Airsurf bluetooth capability, you can connect all your wireless devices seamlessly.

Changing the Language of the System

From Settings go to Time & Language > Date & Time / Language & Region

Start Menu

Activating the start menu at the bottom left, you will find quick links to File Explorer, Settings, Stop (Suspend, Stop System, Restart System), all Apps.

The applications you used more often appear in the upper left corner. The tiles (live tiles) that appear on the right side of the start menu act as quick links to the applications. You can reorganize, resize, add and remove tiles whenever you want.

Features

Display

Large 14.1 inch FHD display.

Memory

16 GB of RAM and 512 GB of ROM.

Jack Audio 3.5 mm

Connect headphones or earphones through this output.

Camera

The device's built-in camera lets you take photos and videos along with video calling support.

Microphone

It captures your voice and all surrounding incoming sounds.

Speaker

It offers a clear and optimal quality of sound.

Technical Datasheet

Dimensions



Width:320.9mm | Height: 219.25 mm | Thickness: 16.3mm | Weight: 51.8 OZ

Chip



Intel i7,1165G7,2.8GHz
Core Tigerlake x 64
bit operating up to 4.1 GHz

Graphics



Intel® UHD Graphics for
10th Gen Intel® Processors
operating up to 1 GHz

Display



Display 14.1" FHD
Resolution 1920 x 1080 FHD

Keyboard



Keyboard with touchpad
multi touch

Operating System



Windows Home 11
Windows Pro

Memory



RAM LPDDR4 16 GB Storage capacity 512 GB SSD

Inputs | outputs



1 Port **USB 2.0**
2 Port **USB 3.0**
1 Port **USB Type-C full function**
1 Port **USB Type-C data only**
1 Earphone output 3.5 mm

Battery



Lithium polymer battery:
Dual Cell 4825 mAh 11.4 V

Connection




- **Wi-Fi AX201D2W**
- **Bluetooth 5.1**


Camera | Audio





- Audio: **2** integrated speakers
- Camera: **1 MP** Front

Use Orbic Standard Safety Information

 **EXPLOSION HAZARD** if the battery is replaced with a non compliant model, According to the manufacturer's instructions.

 **DO NOT THROW** the battery in municipal waste bins. The X symbol on the disposal bin indicates that the battery should not be thrown in the bins of municipal waste.

 **DO NOT THROW** your Orbic Airsurf Wi-Fi PC in municipal waste bins. This product has been designed to enable the reuse of some parts and the recycling of other parts. The X symbol on the disposal bin indicates that the product (electrical, electronic, batteries containing mercury) should not be thrown in the bins of municipal waste. Check local regulations for proper disposal of electronic products.

 **DO NOT THROW** your Orbic Airsurf Wi-Fi PC in the fire. **DO NOT** create a short circuit between the contacts. **DO NOT** disassemble your product.



Model Name: RC141TLWF

Support & More



Get help using your device and download a User Guide from your computer, visit



<https://orbic.us/pages/support>



Customer service
Call **1-877-872-4555**

