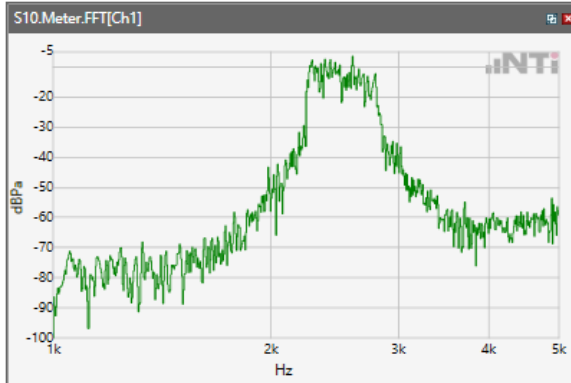
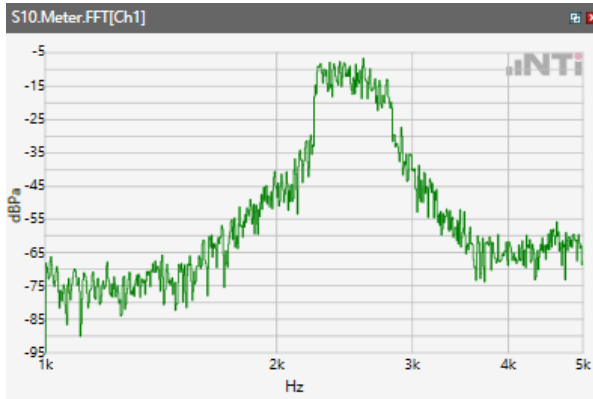


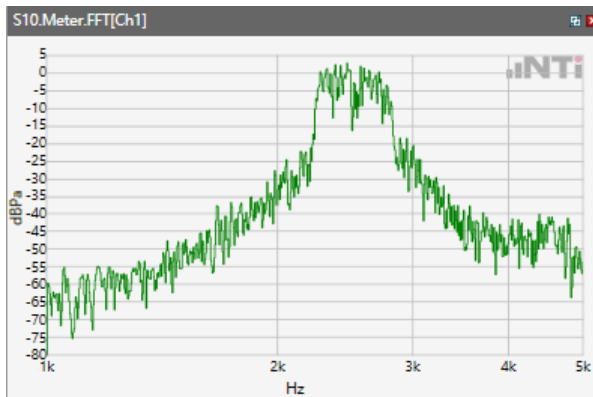
ANSI/TIA 5050-2018 \ 2N HAC ON \ WB 23.85kbps\ 5.2 Receive path – distortion and noise\LTE Band 2



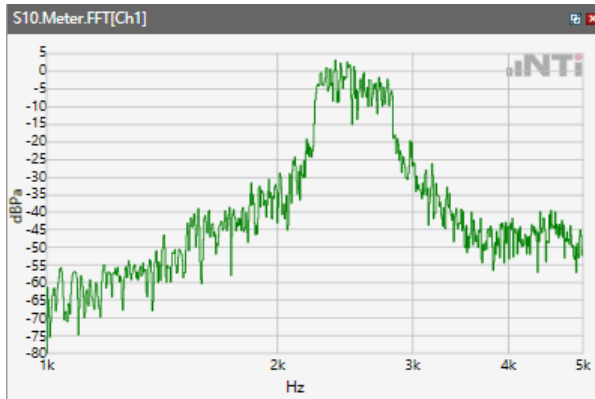
ANSI/TIA 5050-2018 \ 2N HAC ON \ WB 23.85kbps\ 5.2 Receive path – distortion and noise\ LTE Band 4



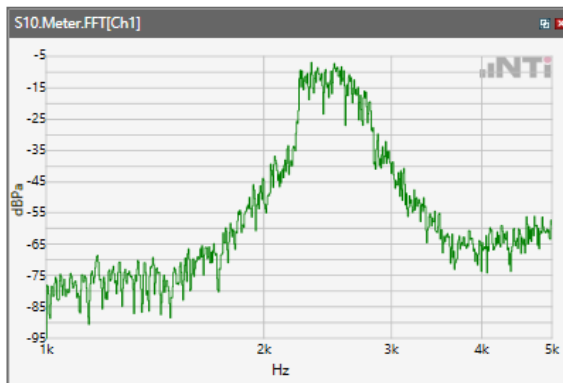
ANSI/TIA 5050-2018 \ 2N HAC ON \ WB 23.85kbps kbps\ 5.2 Receive path – distortion and noise\ LTE Band 5



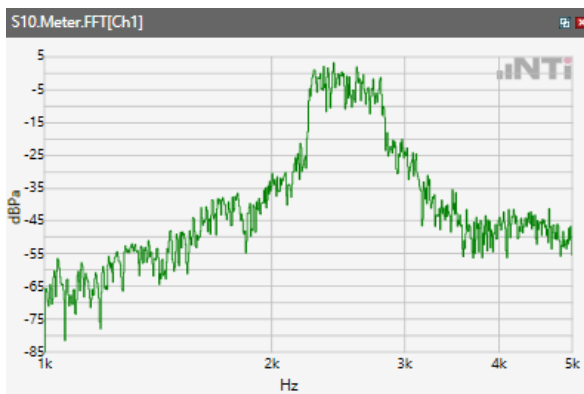
ANSI/TIA 5050-2018 \ 2N HAC ON \ WB 23.85kbps kbps\ 5.2 Receive path – distortion and noise\
LTE Band 7



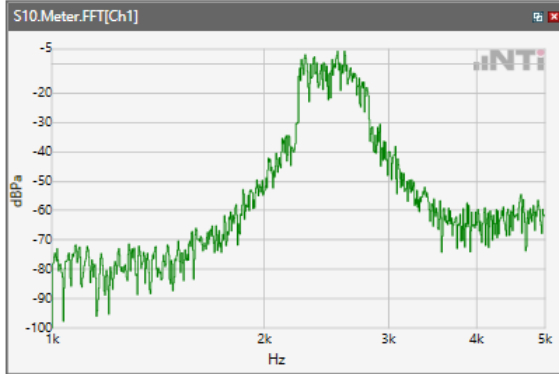
ANSI/TIA 5050-2018 \ 2N HAC ON \ WB 23.85kbps kbps\ 5.2 Receive path – distortion and noise\
LTE Band 12



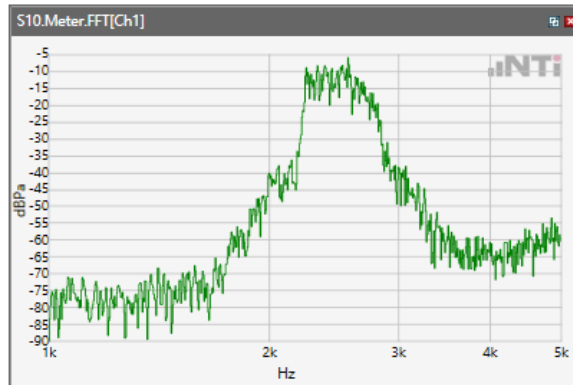
ANSI/TIA 5050-2018 \ 2N HAC ON \ WB 23.85kbps\ 5.2 Receive path – distortion and noise\
LTE Band 13



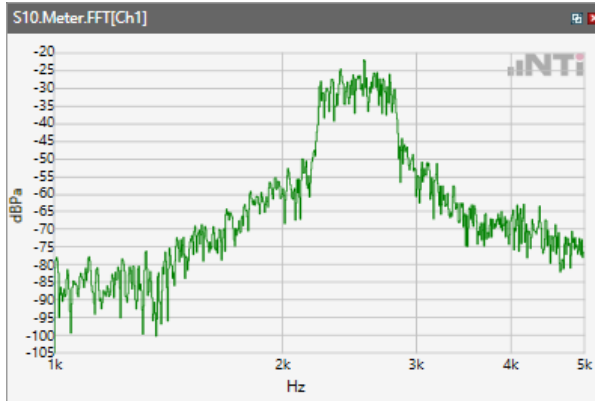
ANSI/TIA 5050-2018 \ 2N HAC ON \ WB 23.85kbps\ 5.2 Receive path – distortion and noise\ LTE Band 48



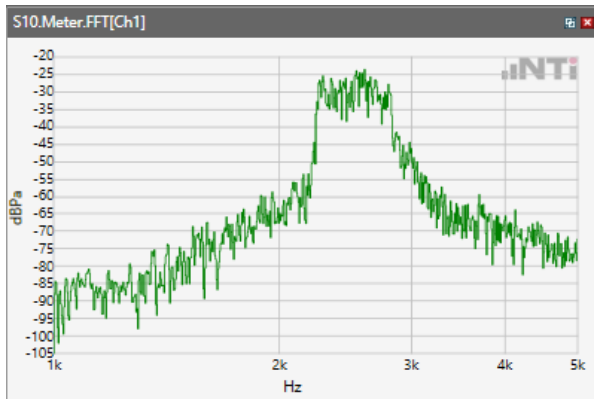
ANSI/TIA 5050-2018 \ 2N HAC ON \ WB 23.85kbps\ 5.2 Receive path – distortion and noise\ LTE Band 66



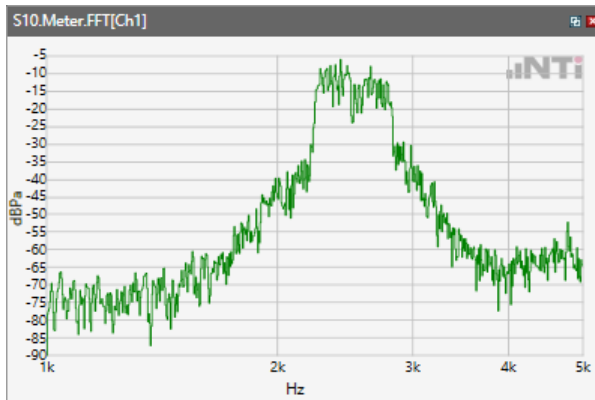
ANSI/TIA 5050-2018 \ 2N HAC ON \ WB 23.85kbps\ 5.2 Receive path – distortion and noise\ WLAN 2.4GHz



ANSI/TIA 5050-2018 \ 2N HAC ON \ WB 23.85kbps\ 5.2 Receive path – distortion and noise\ WLAN 5.2GHz

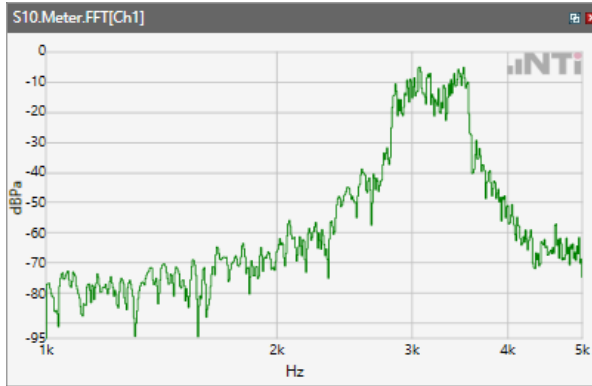


ANSI/TIA 5050-2018 \ 2N HAC ON \ WB 23.85kbps\ 5.2 Receive path – distortion and noise\ WLAN 5.8GHz

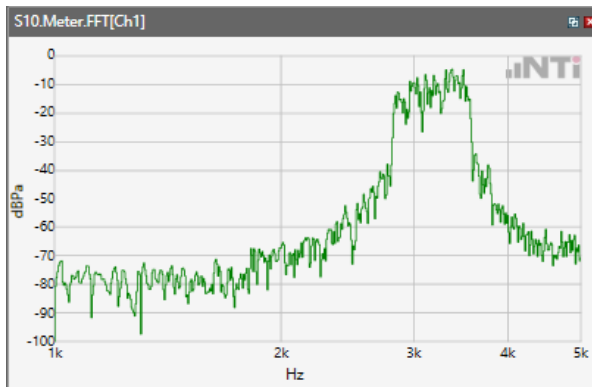


Receive path - distortion and noise 3150Hz WB&NB

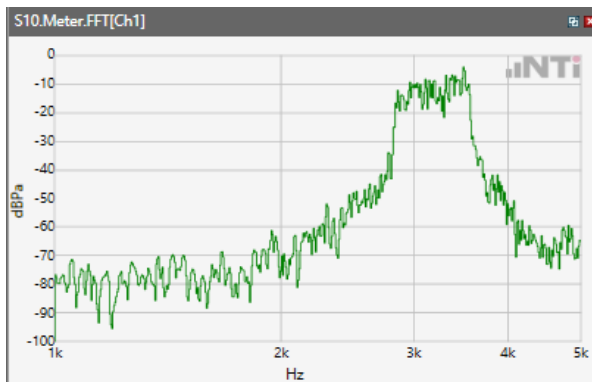
ANSI/TIA 5050-2018 \ 2N HAC ON \ WB 23.85kbps\ 5.2 Receive path – distortion and noise\WCDMA Band II



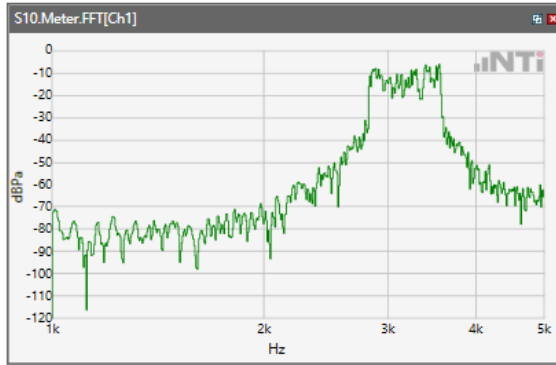
ANSI/TIA 5050-2018 \ 2N HAC ON \ WB 23.85kbps\ 5.2 Receive path – distortion and noise\ WCDMA Band IV



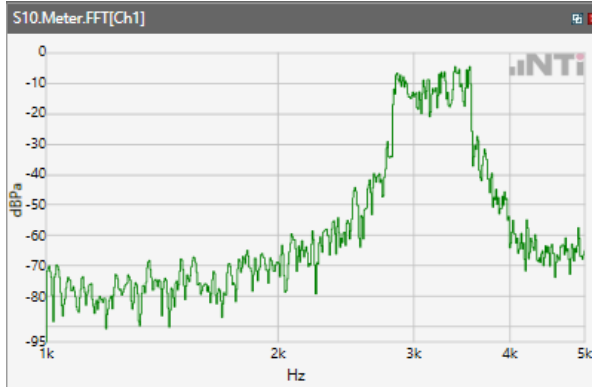
ANSI/TIA 5050-2018 \ 2N HAC ON \ WB 23.85kbps\ 5.2 Receive path – distortion and noise\ WCDMA Band V



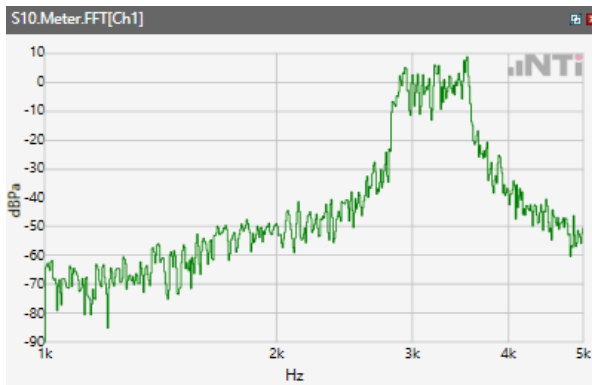
ANSI/TIA 5050-2018 \ 2N HAC ON \ WB 23.85kbps\ 5.2 Receive path – distortion and noise\ LTE Band 2



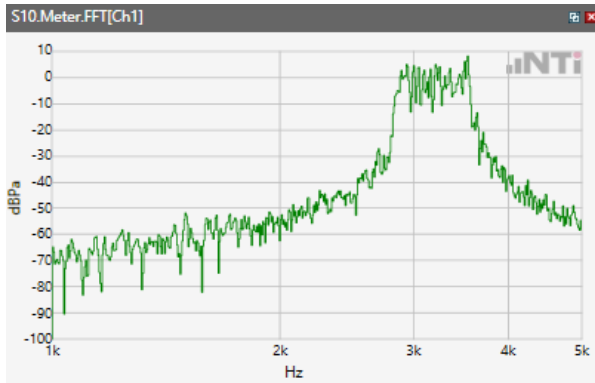
ANSI/TIA 5050-2018 \ 2N HAC ON \ WB 23.85kbps\ 5.2 Receive path – distortion and noise\ LTE Band 4



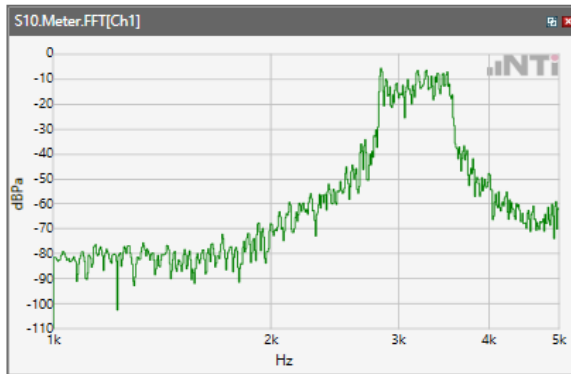
ANSI/TIA 5050-2018 \ 2N HAC ON \ WB 23.85kbps\ 5.2 Receive path – distortion and noise\ LTE Band 5



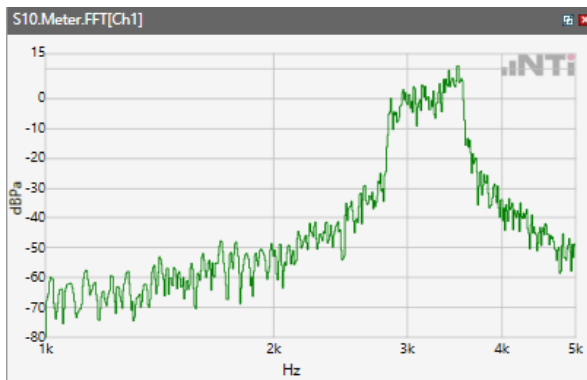
ANSI/TIA 5050-2018 \ 2N HAC ON \ WB 23.85kbps\ 5.2 Receive path – distortion and noise\ LTE Band 7



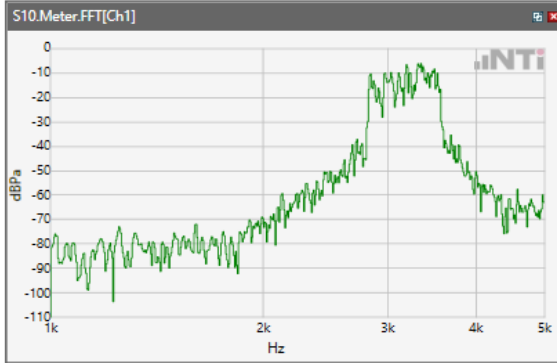
ANSI/TIA 5050-2018 \ 2N HAC ON \ WB 23.85kbps\ 5.2 Receive path – distortion and noise\ LTE Band 12



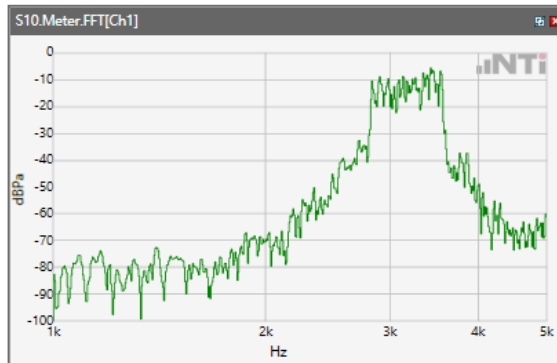
ANSI/TIA 5050-2018 \ 2N HAC ON \ WB 23.85kbps\ 5.2 Receive path – distortion and noise\ LTE Band 13



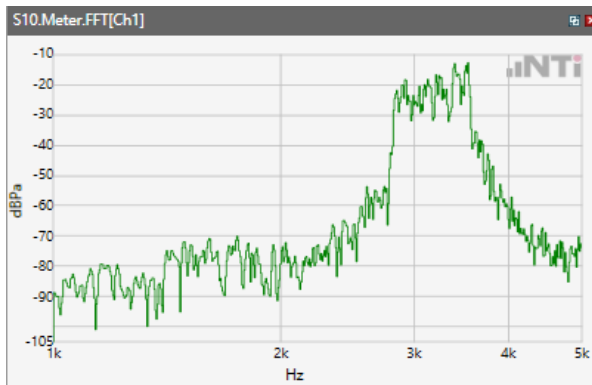
ANSI/TIA 5050-2018 \ 2N HAC ON \ WB 23.85kbps\ 5.2 Receive path – distortion and noise\ LTE Band 48



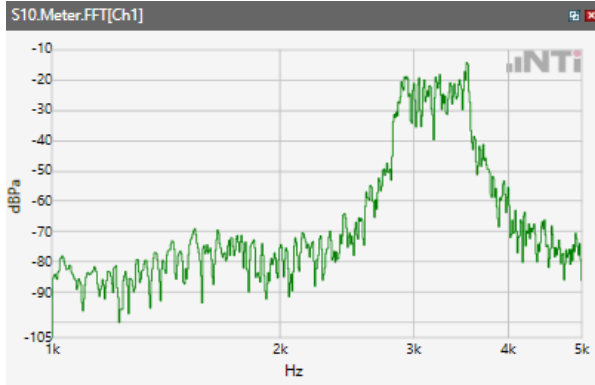
ANSI/TIA 5050-2018 \ 2N HAC ON \ WB 23.85kbps\ 5.2 Receive path – distortion and noise\ LTE Band 66



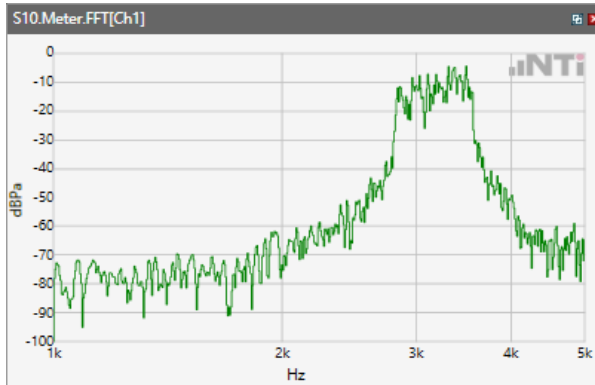
ANSI/TIA 5050-2018 \ 2N HAC ON \ WB 23.85kbps\ 5.2 Receive path – distortion and noise\ WLAN 2.4GHz



ANSI/TIA 5050-2018 \ 2N HAC ON \ WB 23.85kbps\ 5.2 Receive path – distortion and noise\ WLAN
5.2GHz

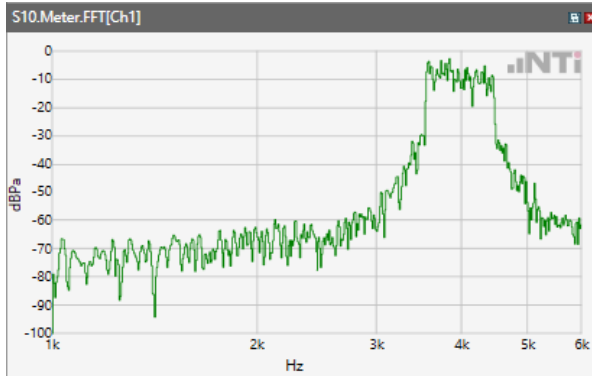


ANSI/TIA 5050-2018 \ 2N HAC ON \ WB 23.85kbps\ 5.2 Receive path – distortion and noise\ WLAN
5.8GHz

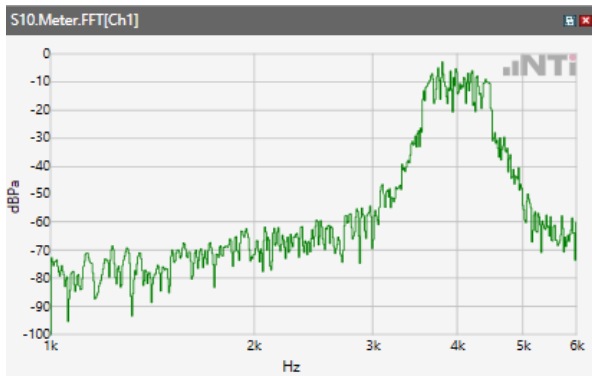


Receive path - distortion and noise 4000Hz WB only

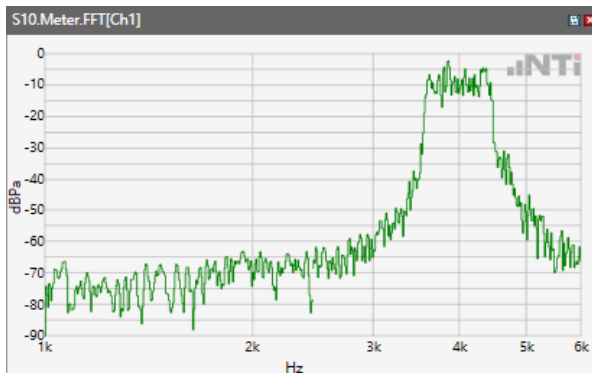
ANSI/TIA 5050-2018 \ 2N HAC ON \ WB 23.85kbps\ 5.2 Receive path – distortion and noise\WCDMA Band II



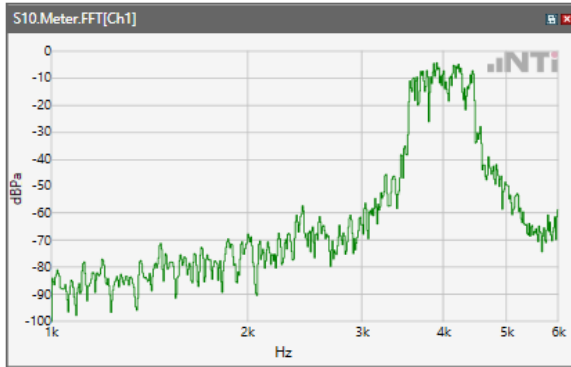
ANSI/TIA 5050-2018 \ 2N HAC ON \ WB 23.85kbps\ 5.2 Receive path – distortion and noise\ WCDMA Band IV



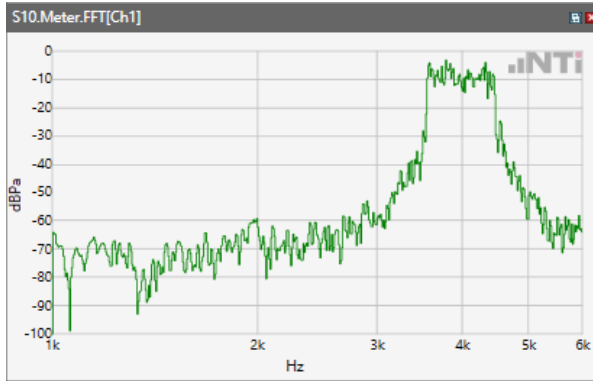
ANSI/TIA 5050-2018 \ 2N HAC ON \ WB 23.85kbps\ 5.2 Receive path – distortion and noise\LTE Band 2



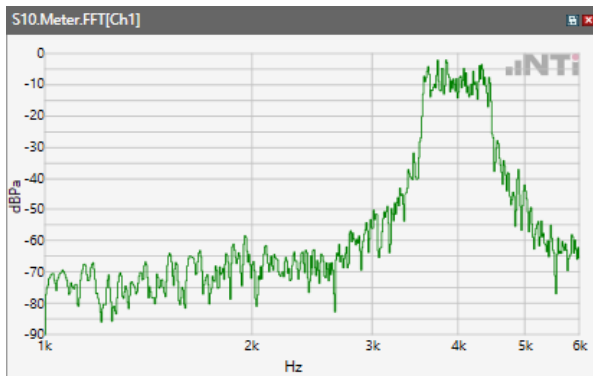
ANSI/TIA 5050-2018 \ 2N HAC ON \ WB 23.85kbps\ 5.2 Receive path – distortion and noise\ LTE Band 4



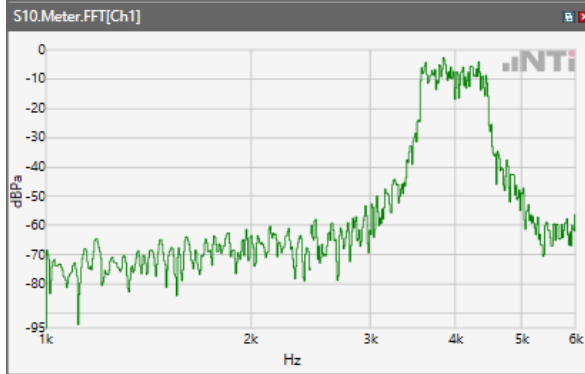
ANSI/TIA 5050-2018 \ 2N HAC ON \ WB 23.85kbps\ 5.2 Receive path – distortion and noise\ LTE Band 5



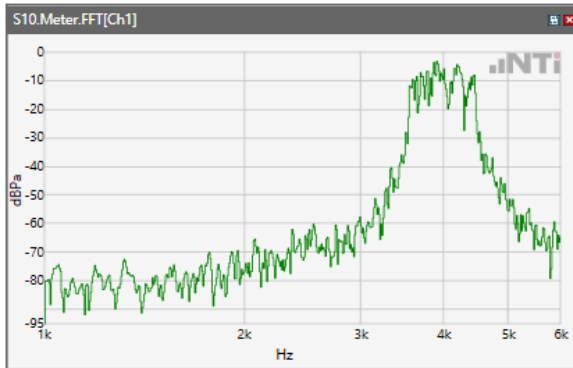
ANSI/TIA 5050-2018 \ 2N HAC ON \ WB 23.85kbps\ 5.2 Receive path – distortion and noise\ LTE Band 7



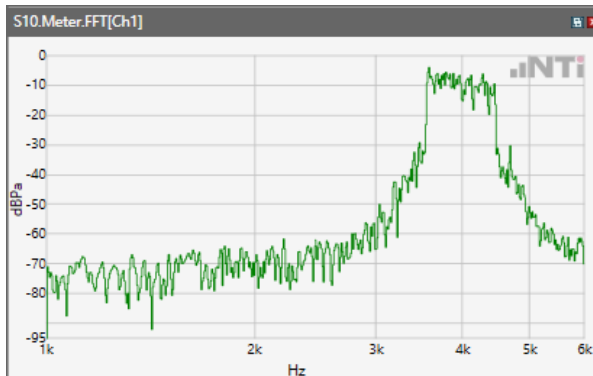
ANSI/TIA 5050-2018 \ 2N HAC ON \ WB 23.85kbps\ 5.2 Receive path – distortion and noise\ LTE Band 12



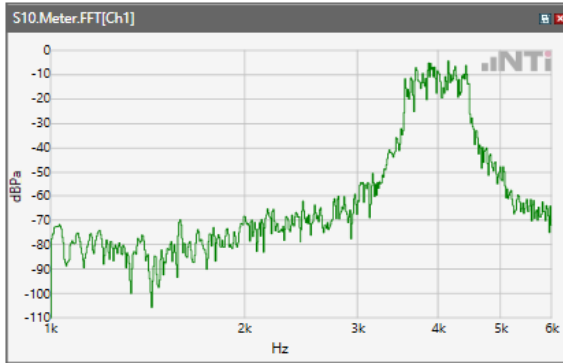
ANSI/TIA 5050-2018 \ 2N HAC ON \ WB 23.85kbps\ 5.2 Receive path – distortion and noise\ LTE Band 13



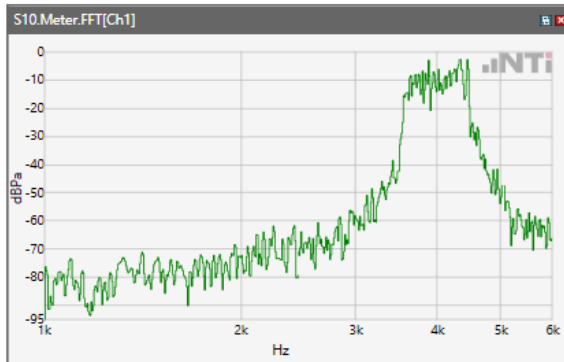
ANSI/TIA 5050-2018 \ 2N HAC ON \ WB 23.85kbps\ 5.2 Receive path – distortion and noise\ LTE Band 25



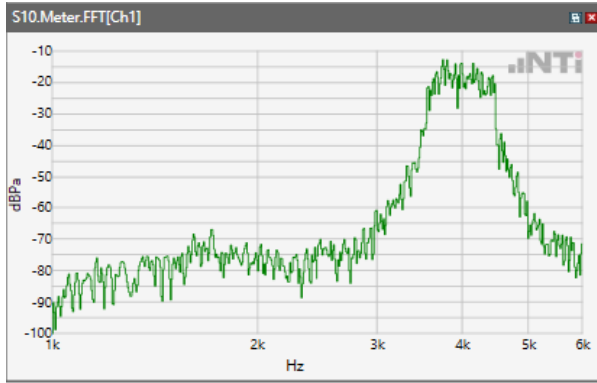
ANSI/TIA 5050-2018 \ 2N HAC ON \ WB 23.85kbps\ 5.2 Receive path – distortion and noise\ LTE Band 66



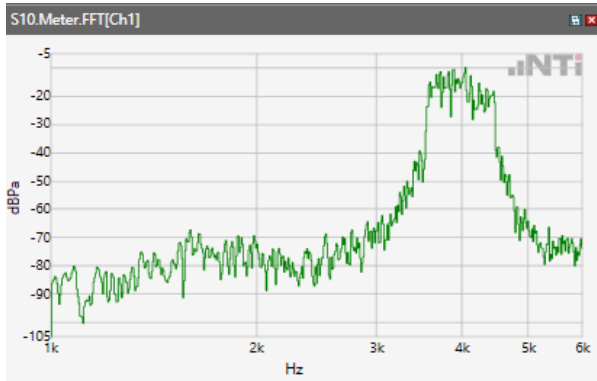
ANSI/TIA 5050-2018 \ 2N HAC ON \ WB 23.85kbps\ 5.2 Receive path – distortion and noise\ WLAN 2.4GHz



ANSI/TIA 5050-2018 \ 2N HAC ON \ WB 23.85kbps\ 5.2 Receive path – distortion and noise\ WLAN 5.2GHz

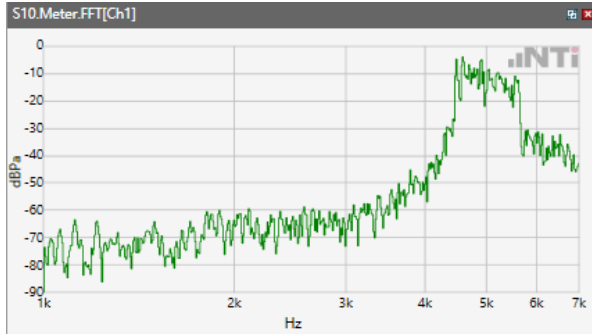


ANSI/TIA 5050-2018 \ 2N HAC ON \ WB 23.85kbps \ 5.2 Receive path – distortion and noise \ WLAN 5.8GHz

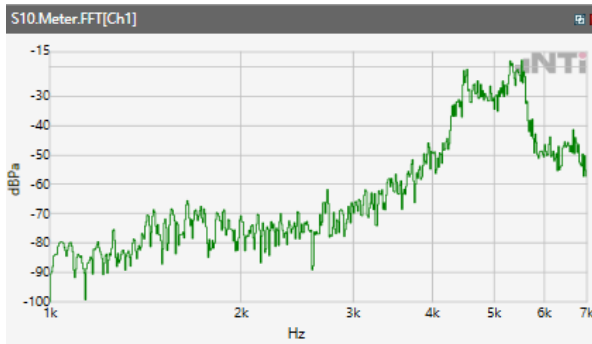


Receive path - distortion and noise 5000Hz WB only

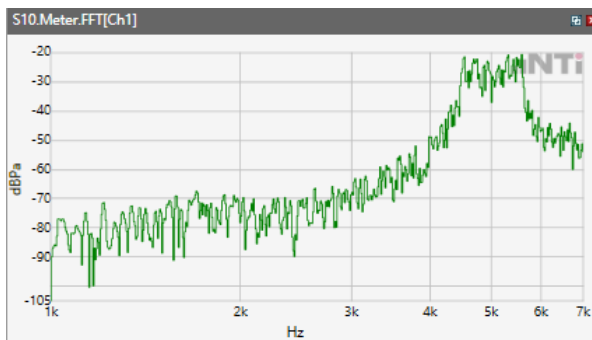
ANSI/TIA 5050-2018 \ 2N HAC ON \ WB 23.85kbps\ 5.2 Receive path – distortion and noise\WCDMA Band II



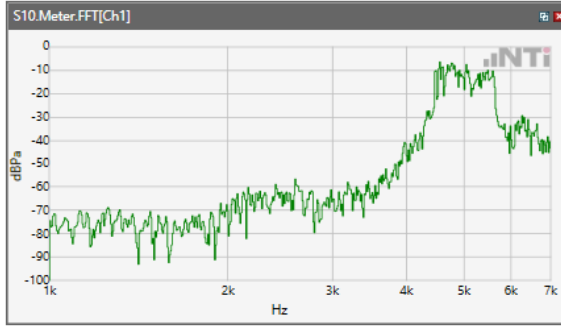
ANSI/TIA 5050-2018 \ 2N HAC ON \ WB 23.85kbps\ 5.2 Receive path – distortion and noise\ WCDMA Band IV



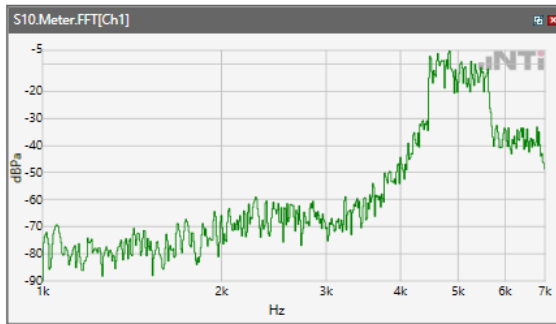
ANSI/TIA 5050-2018 \ 2N HAC ON \ WB 23.85kbps\ 5.2 Receive path – distortion and noise\ WCDMA Band V



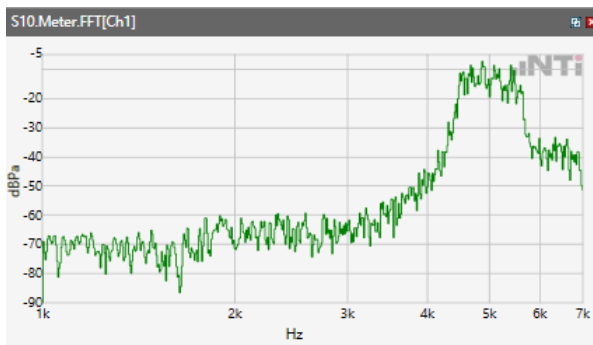
ANSI/TIA 5050-2018 \ 2N HAC ON \ WB 23.85kbps\ 5.2 Receive path – distortion and noise\LTE Band 2



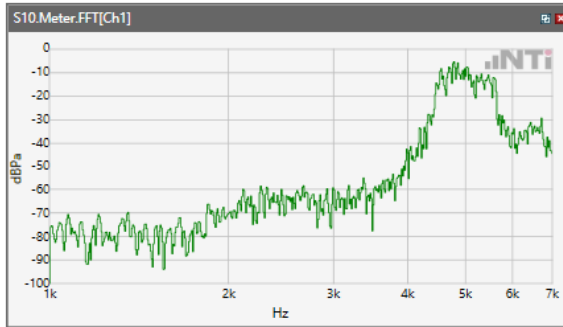
ANSI/TIA 5050-2018 \ 2N HAC ON \ WB 23.85kbps\ 5.2 Receive path – distortion and noise\ LTE Band 4



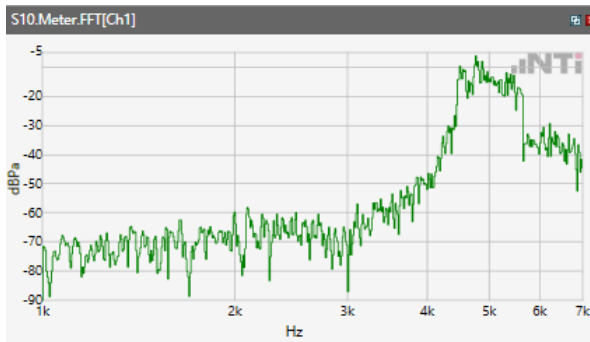
ANSI/TIA 5050-2018 \ 2N HAC ON \ WB 23.85kbps\ 5.2 Receive path – distortion and noise\ LTE Band 5



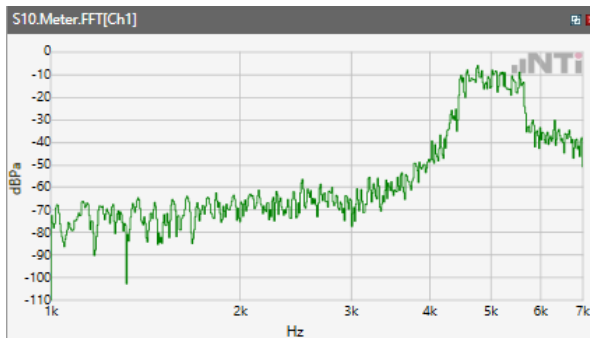
ANSI/TIA 5050-2018 \ 2N HAC ON \ WB 23.85kbps\ 5.2 Receive path – distortion and noise\ LTE Band 7



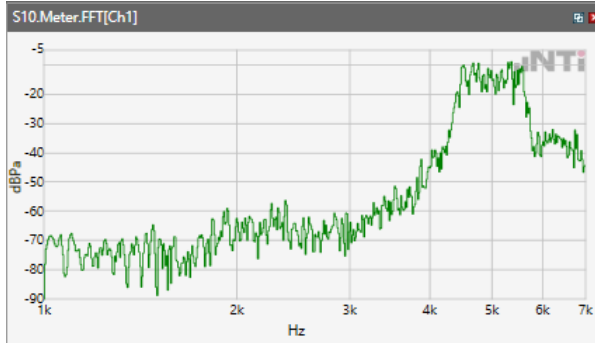
ANSI/TIA 5050-2018 \ 2N HAC ON \ WB 23.85kbps\ 5.2 Receive path – distortion and noise\ LTE Band 12



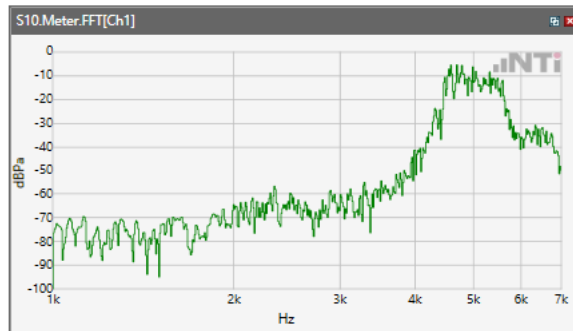
ANSI/TIA 5050-2018 \ 2N HAC ON \ WB 23.85kbps\ 5.2 Receive path – distortion and noise\ LTE Band 13



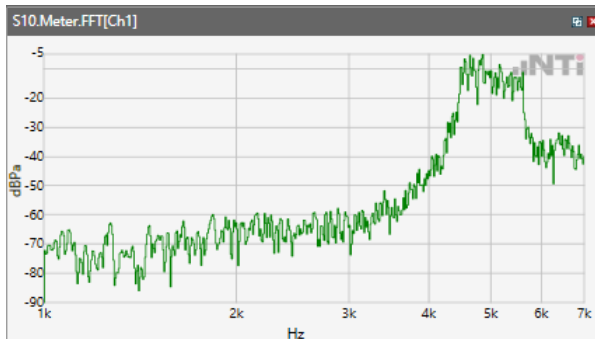
ANSI/TIA 5050-2018 \ 2N HAC ON \ WB 23.85kbps\ 5.2 Receive path – distortion and noise\ LTE Band 48



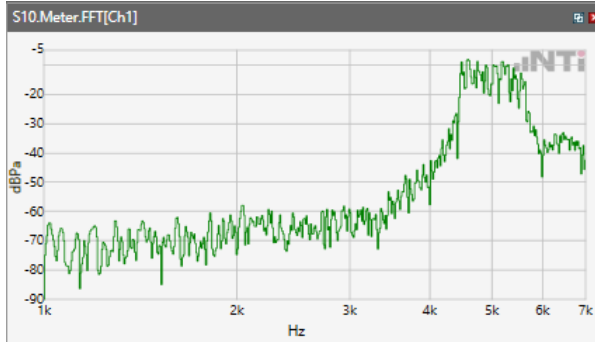
ANSI/TIA 5050-2018 \ 2N HAC ON \ WB 23.85kbps\ 5.2 Receive path – distortion and noise\ LTE Band 66



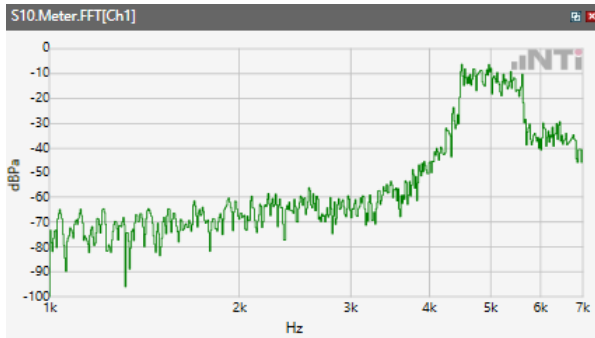
ANSI/TIA 5050-2018 \ 2N HAC ON \ WB 23.85kbps\ 5.2 Receive path – distortion and noise\ WLAN 2.4GHz



ANSI/TIA 5050-2018 \ 2N HAC ON \ WB 23.85kbps\ 5.2 Receive path – distortion and noise\ WLAN
5.2GHz



ANSI/TIA 5050-2018 \ 2N HAC ON \ WB 23.85kbps\ 5.2 Receive path – distortion and noise\ WLAN
5.8GHz

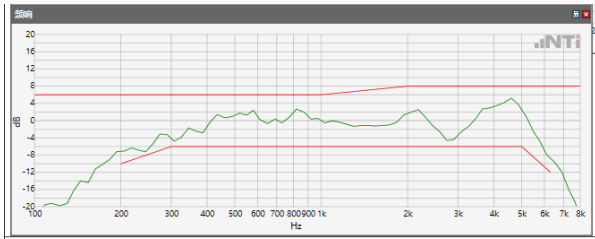


5.2 Receive path – distortion and noise

The distortion and noise test results data are referred to Annex C.

5.3 Receive Acoustic Frequency response Performance

ANSI/TIA 5050-2018 \ 2N HAC ON \ WB 23.85kbps \ WCDMA Band II



Absolute minimal distance

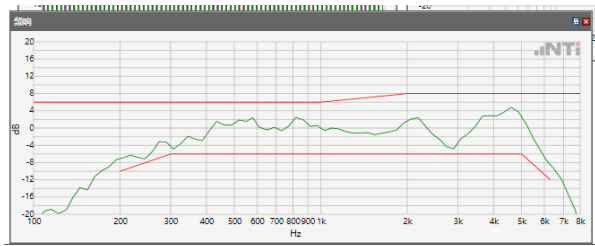
OK

OK

Limits

	lower
Run 1	Fit into tolerance

ANSI/TIA 5050-2018 \ 2N HAC ON \ WB 23.85kbps \ WCDMA Band IV



Absolute minimal distance

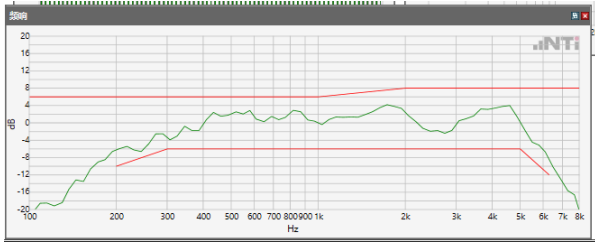
OK

OK

Limits

	lower
Run 1	Fit into tolerance

ANSI/TIA 5050-2018 \ 2N HAC ON \ WB 23.85kbps \ WCDMA Band V



Absolute minimal distance

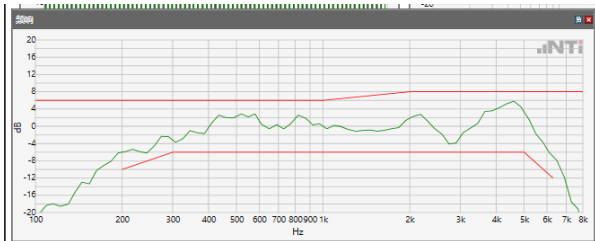
OK

OK

Limits

	lower
Run 1	Fit into tolerance

ANSI/TIA 5050-2018 \ 2N HAC ON \ WB 23.85kbps \ LTE Band 2



Absolute minimal distance

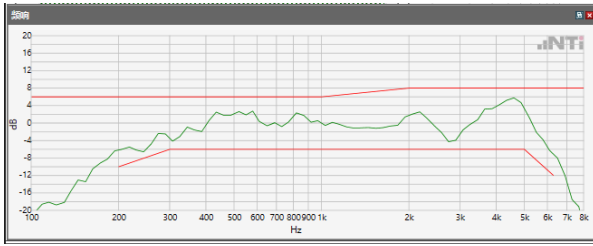
OK

OK

Limits

	lower
Run 1	Fit into tolerance

ANSI/TIA 5050-2018 \ 2N HAC ON \ WB 23.85kbps \ LTE Band 4



Absolute minimal distance

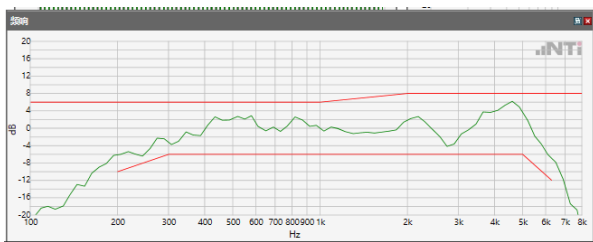
OK

OK

Limits

	lower
Run 1	Fit into tolerance

ANSI/TIA 5050-2018 \ 2N HAC ON \ WB 23.85kbps \ LTE Band 5



Absolute minimal distance

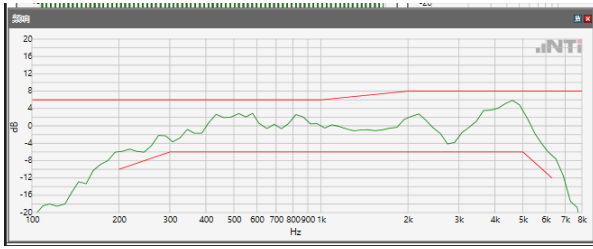
OK

OK

Limits

	lower
Run 1	Fit into tolerance

ANSI/TIA 5050-2018 \ 2N HAC ON \ WB 23.85kbps \ LTE Band 7



Absolute minimal distance

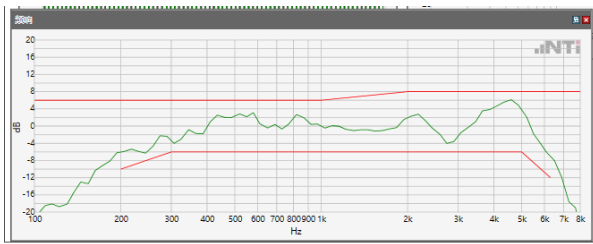
OK

OK

Limits

	lower
Run 1	Fit into tolerance

ANSI/TIA 5050-2018 \ 2N HAC ON \ WB 23.85kbps \ LTE Band 12



Absolute minimal distance

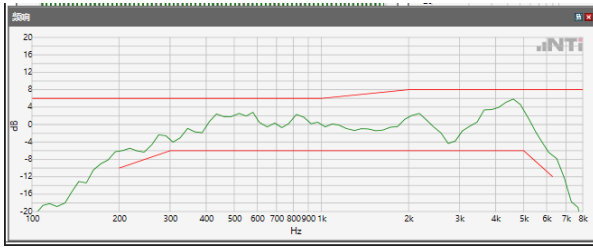
OK

OK

Limits

	lower
Run 1	Fit into tolerance

ANSI/TIA 5050-2018 \ 2N HAC ON \ WB 23.85kbps \ LTE Band 13



Absolute minimal distance

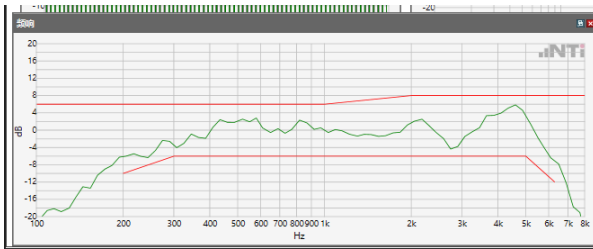
OK

OK

Limits

	lower
Run 1	Fit into tolerance

ANSI/TIA 5050-2018 \ 2N HAC ON \ WB 23.85kbps \ LTE Band 48



Absolute minimal distance

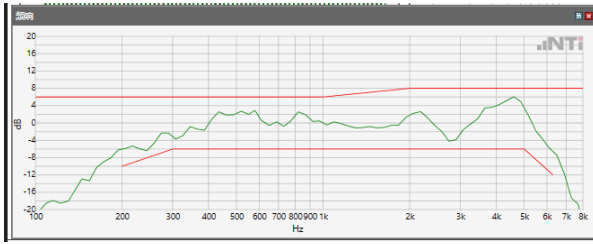
OK

OK

Limits

	lower
Run 1	Fit into tolerance

ANSI/TIA 5050-2018 \ 2N HAC ON \ WB 23.85kbps \ LTE Band 66



Absolute minimal distance

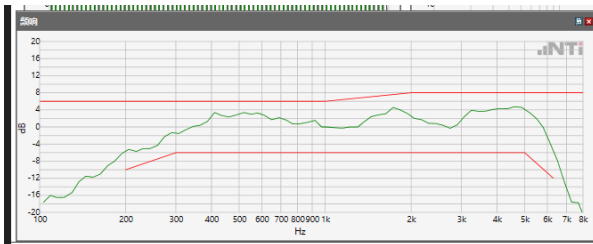
OK

OK

Limits

	lower
Run 1	Fit into tolerance

ANSI/TIA 5050-2018 \ 2N HAC ON \ WB 23.85kbps \ WLAN 2.4GHz



Absolute minimal distance

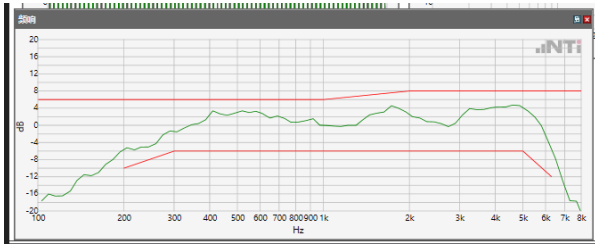
OK

OK

Limits

	lower
Run 1	Fit into tolerance

ANSI/TIA 5050-2018 \ 2N HAC ON \ WB 23.85kbps \ WLAN 5.2GHz



Absolute minimal distance

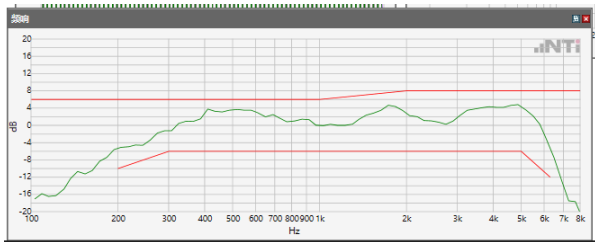
OK

OK

Limits

	lower
Run 1	Fit into tolerance

ANSI/TIA 5050-2018 \ 2N HAC ON \ WB 23.85kbps \ WLAN 5.8GHz



Absolute minimal distance

OK

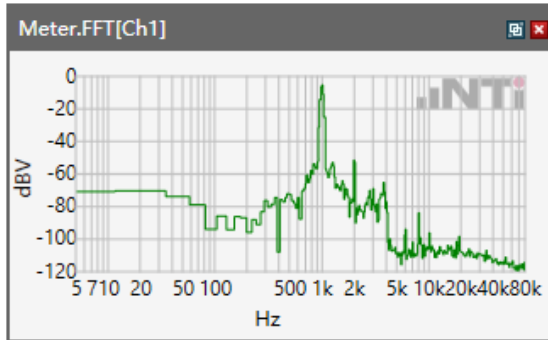
OK

Limits

	lower
Run 1	Fit into tolerance

5.1 Receive Volume Control Performance 2N---EVS NB

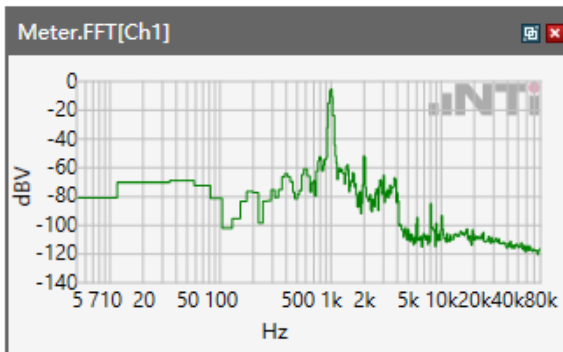
ANSI/TIA 5050-2018 \ 2N HAC ON \ EVS NB 24.4 kbps\LTE Band 2



Speech Level RCV: 87.52 dB[SPL]

Calculated Value: 17.52 dB OK

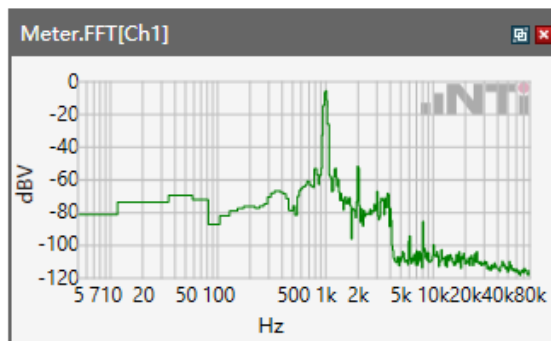
ANSI/TIA 5050-2018 \ 2N HAC ON \ EVS NB 24.4 kbps\ LTE Band 4



Speech Level RCV: 87.41 dB[SPL]

Calculated Value: 17.41 dB OK

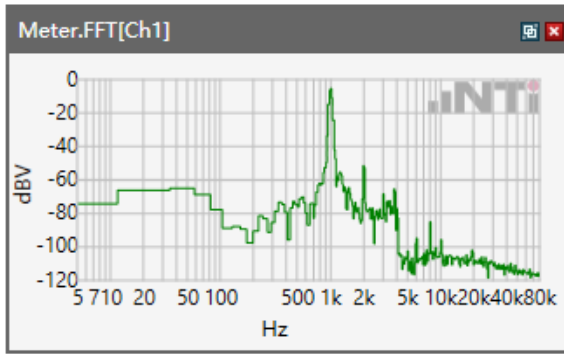
ANSI/TIA 5050-2018 \ 2N HAC ON \ EVS NB 24.4 kbps\LTE Band 5



Speech Level RCV: 87.52 dB[SPL]

Calculated Value: 17.52 dB OK

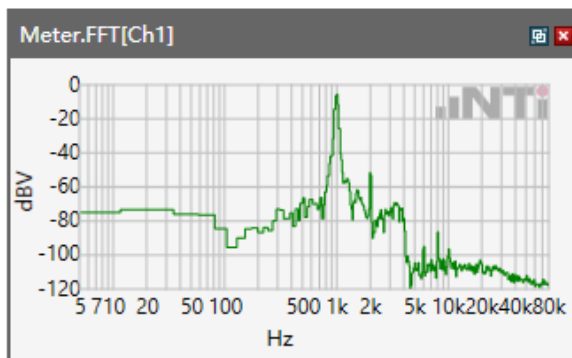
ANSI/TIA 5050-2018 \ 2N HAC ON \ EVS NB 24.4 kbps\LTE Band 7



Speech Level RCV: 87.41 dB[SPL]

Calculated Value: 17.41 dB OK

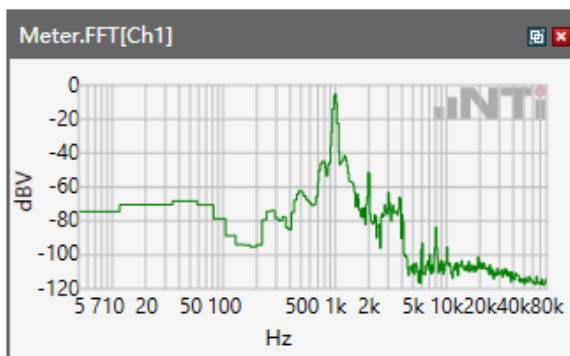
ANSI/TIA 5050-2018 \ 2N HAC ON \ EVS NB 24.4 kbps\ LTE Band 12



Speech Level RCV: 87.43 dB[SPL]

Calculated Value: 17.43 dB OK

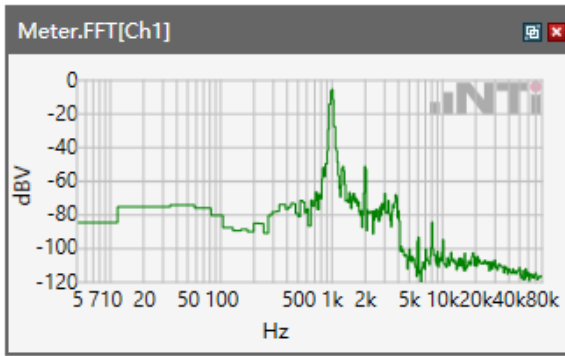
ANSI/TIA 5050-2018 \ 2N HAC ON \ EVS NB 24.4 kbps\LTE Band 13



Speech Level RCV: 87.66 dB[SPL]

Calculated Value: 17.66 dB OK

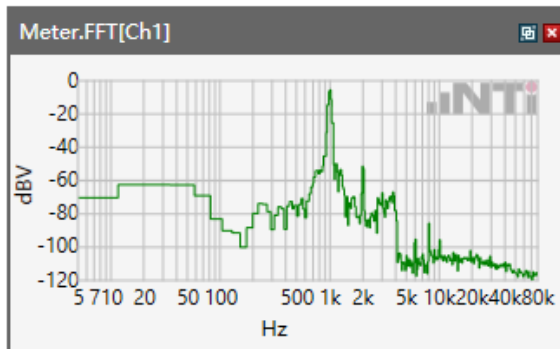
ANSI/TIA 5050-2018 \ 2N HAC ON \ EVS NB 24.4 kbps\ LTE Band 48



Speech Level RCV: 89.57 dB[SPL]

Calculated Value: 19.57 dB OK

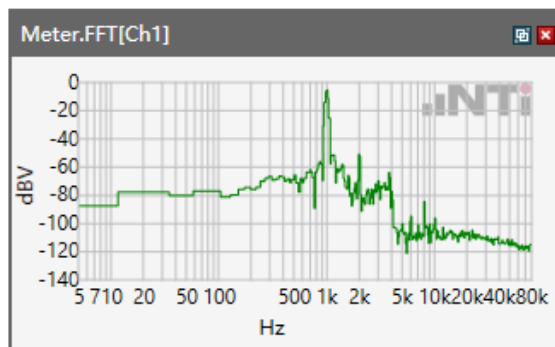
ANSI/TIA 5050-2018 \ 2N HAC ON \ EVS NB 24.4 kbps\ LTE Band 66



Speech Level RCV: 87.44 dB[SPL]

Calculated Value: 17.44 dB OK

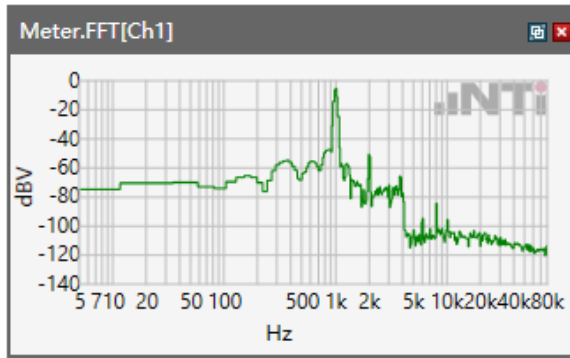
ANSI/TIA 5050-2018 \ 2N HAC ON \ EVS NB 24.4 kbps\ WLAN 2.4GHz



Speech Level RCV: 95.31 dB[SPL]

Calculated Value: 25.31 dB OK

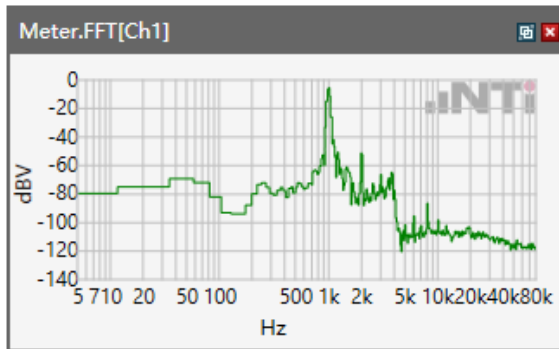
ANSI/TIA 5050-2018 \ 2N HAC ON \ EVS NB 24.4 kbps\WLAN 5.2GHz



Speech Level RCV: 94.72 dB[SPL]

Calculated Value: 24.72 dB OK

ANSI/TIA 5050-2018 \ 2N HAC ON \ EVS NB 24.4 kbps\WLAN 5.8 GHz

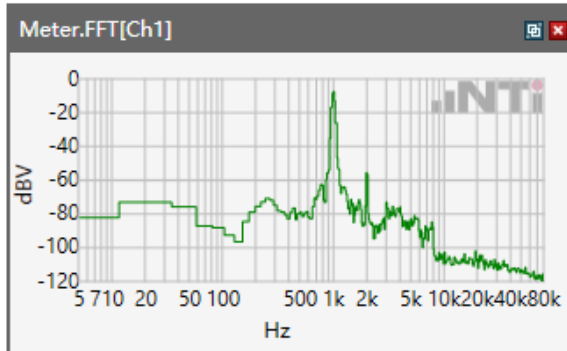


Speech Level RCV: 94.63 dB[SPL]

Calculated Value: 24.63 dB OK

5.1 Receive Volume Control Performance 2N---EVS WB

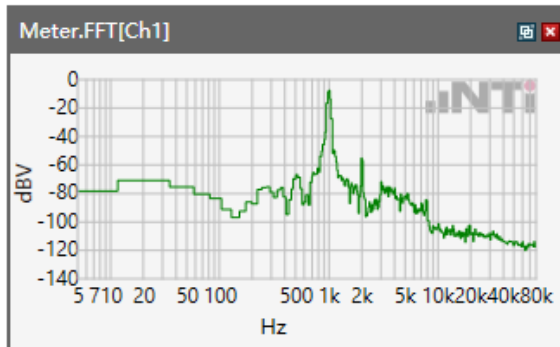
ANSI/TIA 5050-2018 \ 2N HAC ON \ EVS WB 24.4 kbps\LTE Band 2



Speech Level RCV: 79.13 dB[SPL]

Calculated Value: 9.13 dB OK

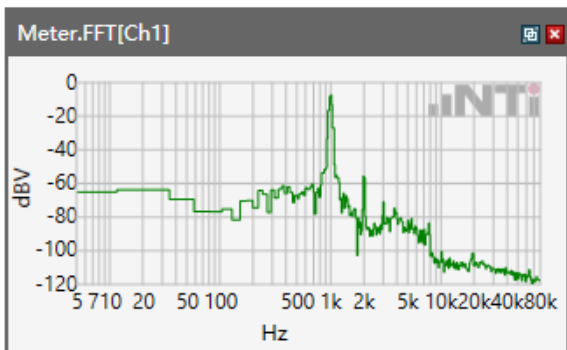
ANSI/TIA 5050-2018 \ 2N HAC ON \ EVS WB 24.4 kbps\ LTE Band 4



Speech Level RCV: 79.2 dB[SPL]

Calculated Value: 9.2 dB OK

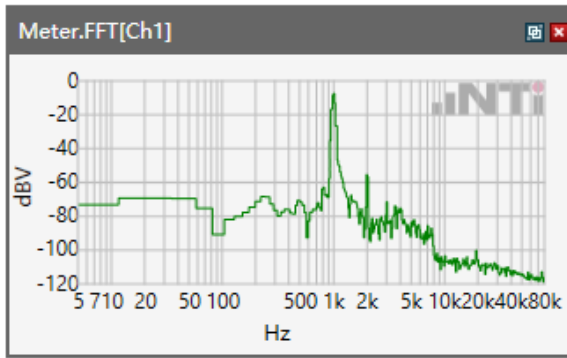
ANSI/TIA 5050-2018 \ 2N HAC ON \ EVS WB 24.4 kbps\LTE Band 5



Speech Level RCV: 79.23 dB[SPL]

Calculated Value: 9.23 dB OK

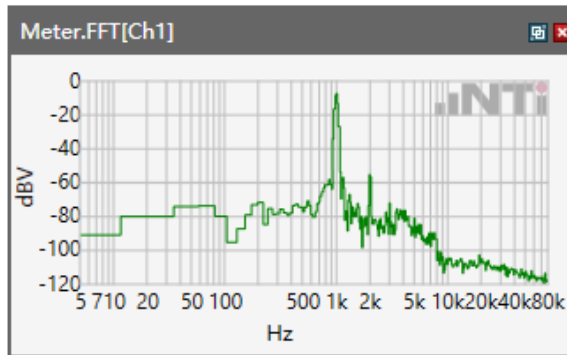
ANSI/TIA 5050-2018 \ 2N HAC ON \ EVS WB 24.4 kbps\LTE Band 7



Speech Level RCV: 79.25 dB[SPL]

Calculated Value: 9.25 dB OK

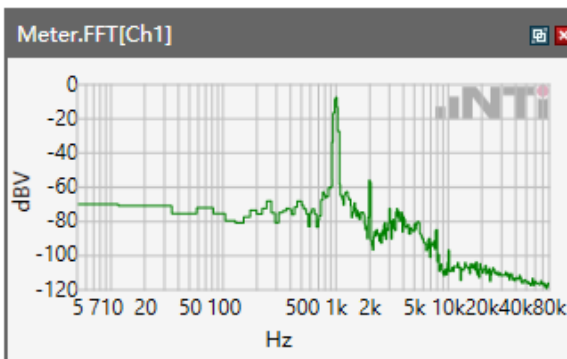
ANSI/TIA 5050-2018 \ 2N HAC ON \ EVS WB 24.4 kbps\ LTE Band 12



Speech Level RCV: 79.21 dB[SPL]

Calculated Value: 9.21 dB OK

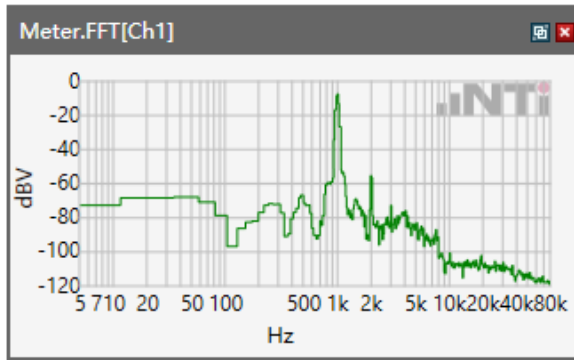
ANSI/TIA 5050-2018 \ 2N HAC ON \ EVS WB 24.4 kbps\LTE Band 13



Speech Level RCV: 79.17 dB[SPL]

Calculated Value: 9.17 dB OK

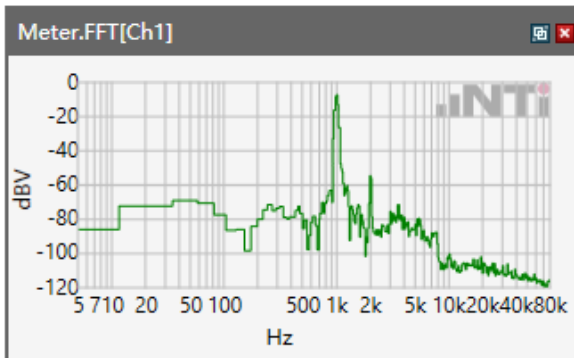
ANSI/TIA 5050-2018 \ 2N HAC ON \ EVS WB 24.4 kbps \ LTE Band 48



Speech Level RCV: 87.83 dB[SPL]

Calculated Value: 17.83 dB OK

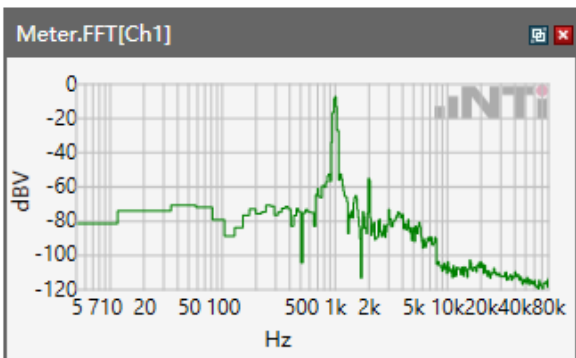
ANSI/TIA 5050-2018 \ 2N HAC ON \ EVS WB 24.4 kbps \ LTE Band 66



Speech Level RCV: 79.25 dB[SPL]

Calculated Value: 9.25 dB OK

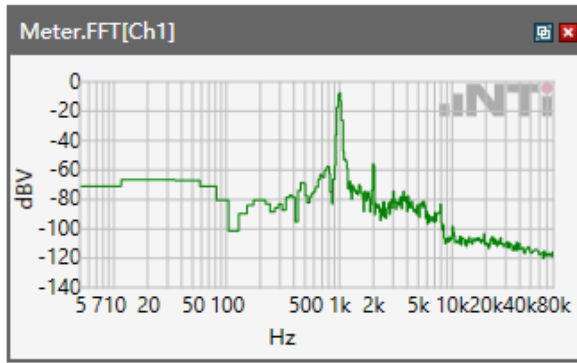
ANSI/TIA 5050-2018 \ 2N HAC ON \ EVS WB 24.4 kbps \ WLAN 2.4GHz



Speech Level RCV: 92.83 dB[SPL]

Calculated Value: 22.83 dB OK

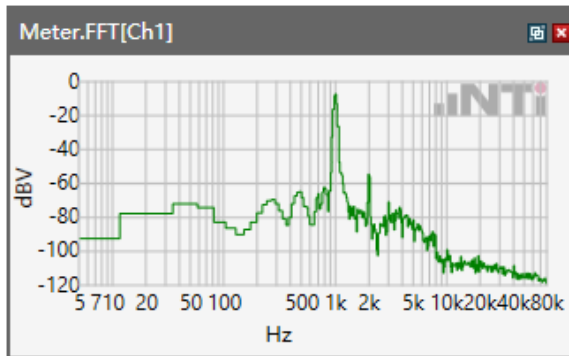
ANSI/TIA 5050-2018 \ 2N HAC ON \ EVS WB 24.4 kbps \ WLAN 5.2GHz



Speech Level RCV: 92.65 dB[SPL]

Calculated Value: 22.65 dB OK

ANSI/TIA 5050-2018 \ 2N HAC ON \ EVS WB 24.4 kbps \ WLAN 5.8 GHz



Speech Level RCV: 92.71 dB[SPL]

Calculated Value: 22.71 dB OK