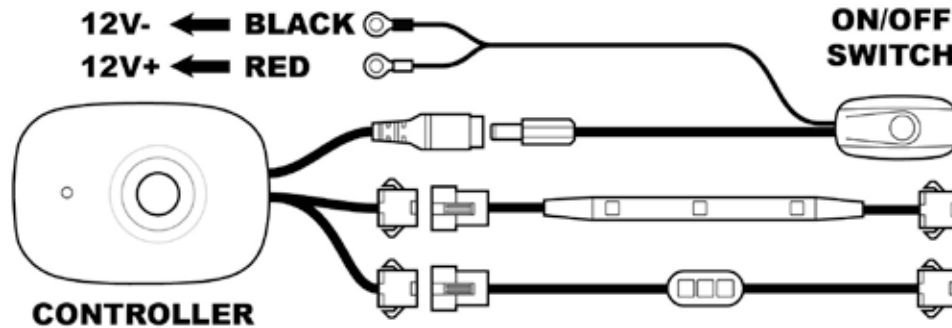


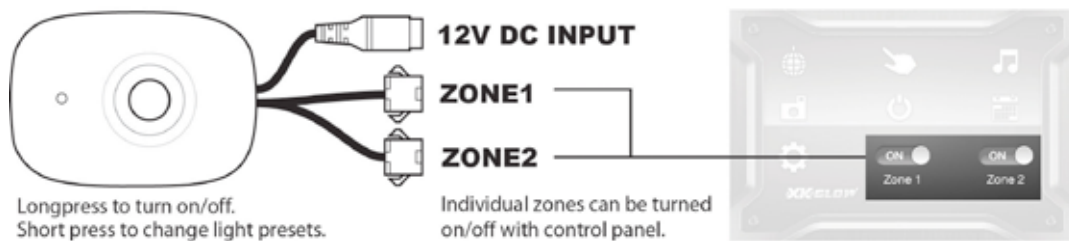
# Installation Guide

## 1. Testing the lights before installation:

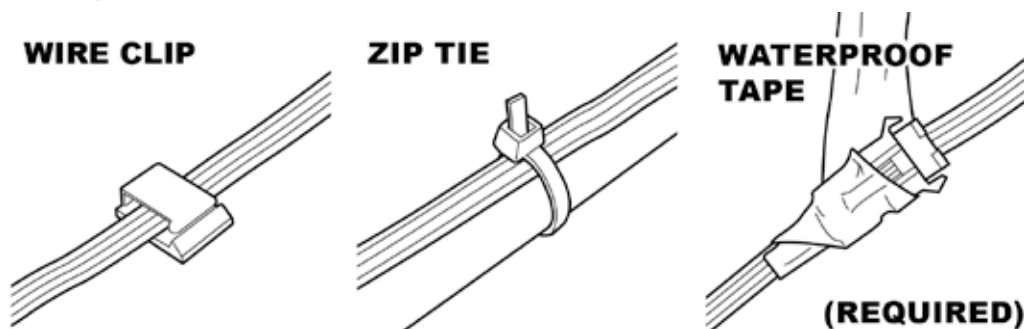
- Connect the lights and control box following the diagram below.
- Connect the red wire of the switch wire to 12V DC battery positive. Connect the black wire to 12V DC battery negative. Push ON/OFF switch until the little blue led indicator in the switch lights up.
- Both the signal LED on the control box and the connected light unit should light up. This indicates the control box and ON/OFF switch wire are working appropriately.
- Disconnect from the power source and then unplug all connectors.



- Planning mounting locations:** Disconnect the vehicle's battery and remove any body work that will have the LED lights located behind them. Clean the mounting surface before attaching lights. LOOSELY mount the LED lights using double-sided tape in the desired locations temporarily with provided extension wires. This controller is capable of splitting lights into two zones and activating them separately.



- Mounting the controller:** Find a cool and dry place to mount the control unit. Make sure that the control box is away from any HOT parts of the vehicle like the engine or exhaust, and not exposed to water or rain.
- Connecting wires:** As shown below, use provided zip ties and wire clips to neatly mount and hide any loose wires. Make sure they are not near any hot parts. Locate the ON/OFF switch in a dry and convenient location. Connect the lights to the output wire from control module.



- Connecting to power source:** Securely connect the input wire terminals to the battery (red → 12V positive. black → 12V negative). Turn on the kit and adjust the light for best lighting effect. Apply 3M Promoter on the mounting surface, and then firmly attach the lights with 3M double side tape. Use zip ties to secure the strips if necessary.
- Apply waterproof tape:** Tightly wrap the connectors with provided elastic waterproof tape. It is required and the tape will protect the connectors against long term water/moisture corrosion.

## How to use the app

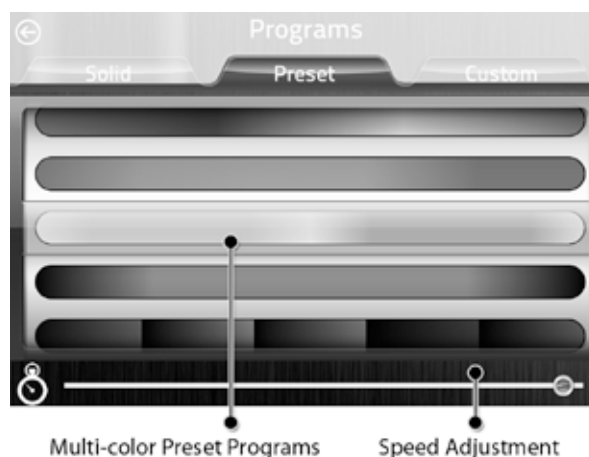
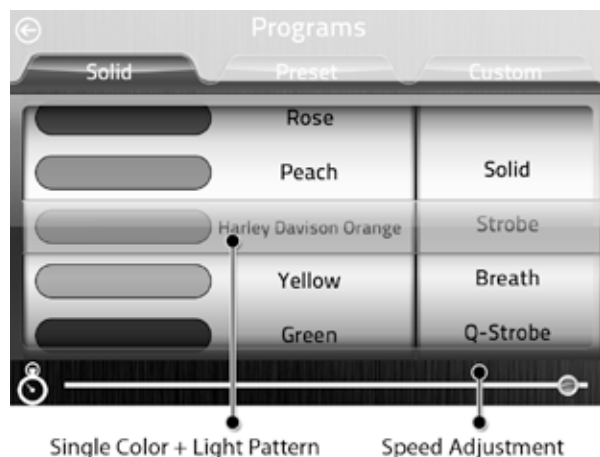


Search “XK Carbon” in app store and install the free control app.

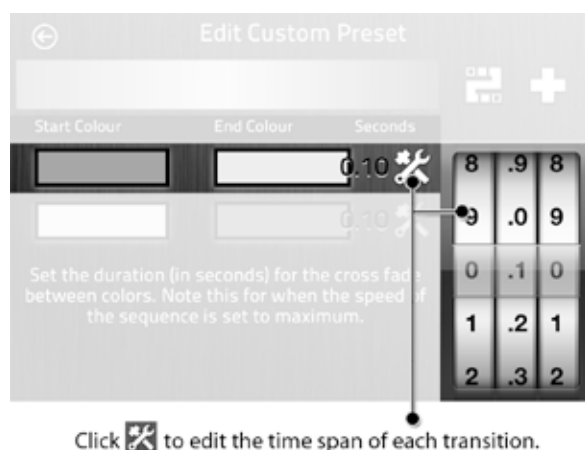
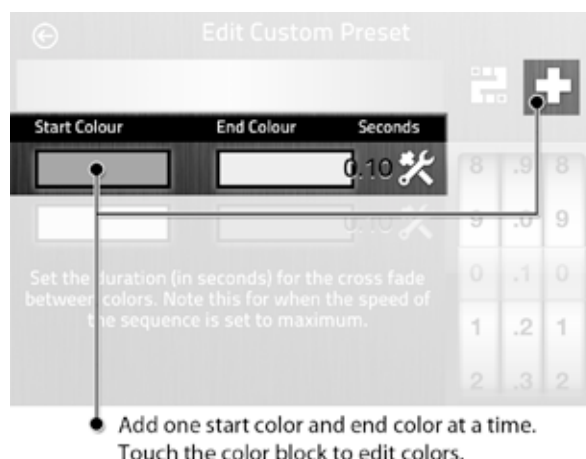
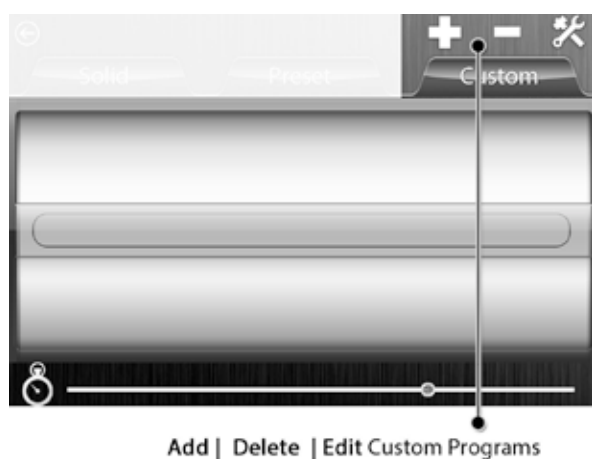
1. Turn on the light kit. You should see the control box led indicator is blinking. Go to the Setting → Wi-Fi on your smart device, find the host name “XKGLOW####” and connect to it. (#### is your unique device number.)
2. Open the app, The home page should appear in 2-3 seconds as shown on the left. **OK. Now comes the fun part!**



### Single Color & Multi Color Presets

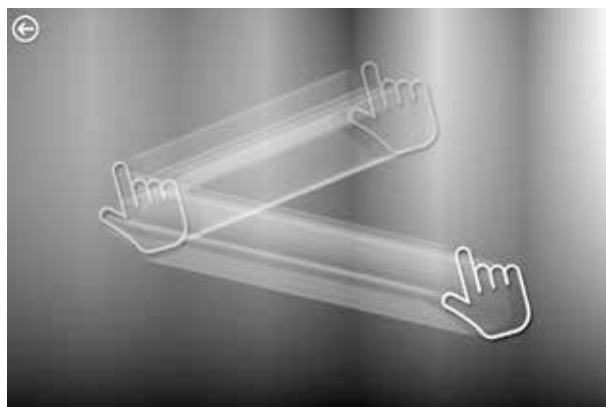


### DIY Custom Programs





### Instant Touch Color Pallet



Move your finger across the screen to see amazing light transition effects.



### Music & Mic Synchronization



1. Create playlist from iTune

2. Play/Pause

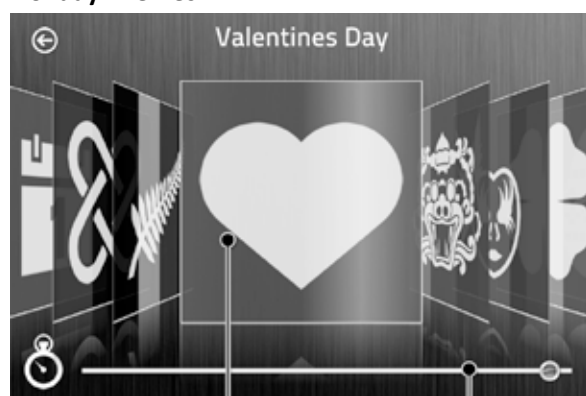


Mic Mode

Click Mic to sync lights with surrounding sound/music



### Holiday Themes



Holiday Color+Pattern themes Speed Adjustment



**Turn off the lights** (control box is still functioning). If you want to completely shut off the system, please push the ON/OFF switch or unplug the power.



**Take photo and share**

**FCC Caution.****§ 15.19 Labelling requirements.**

This device complies with part 15 of the FCC Rules. Operation is subject to the following two conditions: (1) This device may not cause harmful interference, and (2) this device must accept any interference received, including interference that may cause undesired operation.

**§ 15.21 Changes or modification warning**

Any Changes or modifications not expressly approved by the party responsible for compliance could void the user's authority to operate the equipment.

**§ 15.105 Information to the user.**

**Note:** This equipment has been tested and found to comply with the limits for a Class B digital device, pursuant to part 15 of the FCC Rules. These limits are designed to provide reasonable protection against harmful interference in a residential installation. This equipment generates uses and can radiate radio frequency energy and, if not installed and used in accordance with the instructions, may cause harmful interference to radio communications. However, there is no guarantee that interference will not occur in a particular installation. If this equipment does cause harmful interference to radio or television reception, which can be determined by turning the equipment off and on, the user is encouraged to try to correct the interference by one or more of the following measures:

- Reorient or relocate the receiving antenna.
- Increase the separation between the equipment and receiver.
- Connect the equipment into an outlet on a circuit different from that to which the receiver is connected.
- Consult the dealer or an experienced radio/TV technician for help.

**\* RF warning for Portable device:**

The device has been evaluated to meet general RF exposure requirement. The device can be used in portable exposure condition without restriction.