



Thank you for choosing Ditto. We hope it will make your smart phone experience more joyful and less stressful.

If you need help, updates or additional information on how to get the most out of your Ditto, go to: simplematters.com/support

Package Contents

- Ditto
- Battery
- Clip
- Coin door (for an even slimmer profile)
- Wristband (for sleep, swimming, sports, etc.)
- Quick Start Guide



For great tips and ideas on how to wear your Ditto, check out simplematters.com/support

1 Load App



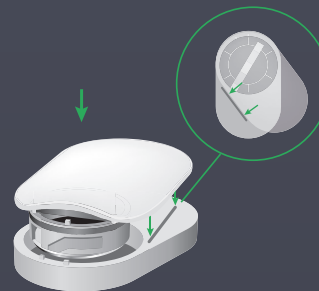
Install the app “Ditto” from the App Store or Google Play.

2 Insert Battery



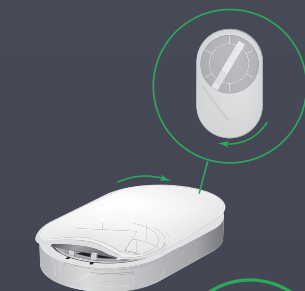
Insert the battery, with the Plus (+) side facing the clip, into the clip.

TIP: the battery may already be inserted into the clip.



Insert the clip gently into the base by aligning the edge of the clip with the diagonal line on the base.

TIP: if you prefer a smaller profile, you can also insert the battery into the coin door.



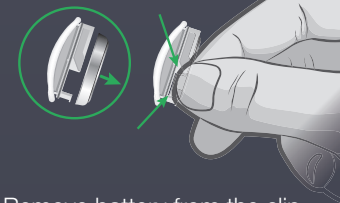
Twist the clip into place so that it aligns with the base. Check to make sure that the clip is not askew.

3 Open Ditto App

Follow the on-screen instructions.

TIP: make sure your mobile phone's Bluetooth® is turned on and the Ditto's battery is inserted correctly.

Replacing Battery



Remove battery from the clip and replace with CR1632 (3V lithium coin type).

Under normal usage conditions, the battery should last approximately 3 to 6 months.



Watch the simplematters.com website for a quick video on how to replace the battery.

Ditto's Water Resistance



Ditto is waterproof and suitable for swimming.

Register

Optionally, go to simplematters.com to register your Ditto and to receive announcements, notices of software updates, tips, and more.

Your privacy is ensured — we will not share your information.

Simple Matters Ditto Limited Warranty

Simple Matters LLC (“Simple Matters”) provides a limited warranty that the Ditto product (including software) (the “Product”) is free of defects in material and workmanship when used as intended for a period of 365 days from the original date of purchase of the Product.

This is a limited warranty and extends to the original purchaser only. It excludes normal wear and tear or any damage resulting from abuse, improper use or handling, accident, modifications or unauthorized repairs, or other

simple **matters**

causes that are not defects in material or workmanship. It is not a warranty or guarantee that operation of the Product will be uninterrupted or error free, or that the user will never miss a notification, call or message, or will not lose or become separated, from his or her paired device. This warranty, the use of the Product and the use of any app or software related to the use of the Product are also subject to any further limitations stated at [**simplematters.com/support**](https://www.simplematters.com/support)

In case of a covered defect, you must return the Product at your expense and the original purchase receipt to Simple Matters as then currently directed on the Simple

Matters web site—[*simplematters.com/support*](https://www.simplematters.com/support)—to obtain warranty coverage. Simple Matters will, at its option and in its sole discretion, repair or replace the defective Product or issue a refund.

Simple Matters specifically disclaims all other warranties, conditions, representations and the provision of or failure to provide any support or other service, information, software, or related content through the Product or as a result of changes in any third party devices or software. This limited warranty excludes all other express or implied warranties of any type, all of which are specifically disclaimed.

Any warranty imposed by operation of law, or course of trade or dealing,

shall be limited to the specific term of this limited warranty. Simple Matters' liability for any direct or indirect, incidental or consequential damages arising out of the use of the Product, or the failure or inability to use the Product, shall be limited to the original purchase price of the Product. No person may change or expand the terms of this limited warranty.

Some jurisdictions do not allow a limitation on implied warranties or the amount or type of damages, so these limitations may not apply to you. This limited warranty gives you specific legal rights, and you may have additional rights that may vary from jurisdiction to jurisdiction.

Regulatory Compliance

FCC & IC

This equipment has been tested and found to comply with the limits for a Class B digital device, pursuant to part 15 of the FCC Rules.

This device complies with Part 15 of the FCC rules and with Industry Canada licence-exempt RSS standard(s). Operation is subject to the following two conditions:

(1) This device may not cause harmful interference, and

(2) this device must accept any interference received, including interference that may cause undesired operation.

Le présent appareil est conforme aux CNR d'Industrie Canada applicables aux appareils radio exempts de licence. L'exploitation est autorisée aux deux conditions suivantes:

(1) l'appareil ne doit pas produire de brouillage, et

(2) l'appareil doit accepter tout brouillage radioélectrique subi, même si le brouillage est susceptible d'en compromettre le fonctionnement.

This equipment generates, uses and can radiate radio frequency energy and, if not installed and used in accordance with the instructions, may cause harmful interference to radio communications.

However, there is no guarantee that interference will not occur in a particular installation. If this equipment does cause harmful interference to radio or television reception, which can be determined by turning the equipment off and on, the user is encouraged to try to correct the interference by one or more of the following measures:

- Reorient or relocate the receiving antenna.
- Increase the separation between the equipment and receiver.

Connect the equipment into an outlet on a circuit different from that to which the receiver is connected.

- Consult the dealer or an experienced radio/TV technician for help

Your device is a radio transmitter and receiver. It is designed and manufactured not to exceed the emission limits for exposure to radio frequency (RF) energy set by the Federal Communications Commission of the U.S. Government. The FCC has established criteria for the amount of radio frequency energy various products may produce depending on their intended usage. This product has been evaluated and found to comply with the FCC's exposure criteria. For body worn operation, the FCC RF exposure guidelines were also met when used with the accessories supplied or designed for this product. Use of other accessories may not ensure compliance with FCC RF exposure

guidelines and should be avoided.

Caution: Any changes or modifications not expressly approved by the party responsible for compliance could void the user's authority to operate this device.

This device must not be co-located with other transmitters.

The installer of this radio equipment must ensure that the antenna is located or pointed such that it does not emit RF field in excess of Health Canada limits for the general population; consult Safety Code 6, obtainable from Health Canada's website [**hc-sc.gc.ca/rpb**](https://www.hc-sc.gc.ca/rpb)


Need more help?


Check our FAQs at [**simplematters.com/support**](https://www.simplematters.com/support)

If you still need assistance, please contact:[**support@simplematters.com**](mailto:support@simplematters.com)

Other ways to keep up to date and get additional support:

- Register your device and/or sign up for updates at [**simplematters.com/support**](https://www.simplematters.com/support)

 Follow us on Twitter @[**wearditto**](https://twitter.com/wearditto)

 Check us out at [**facebook.com/wearditto**](https://facebook.com/wearditto)

© 2014 Simple Matters LLC, all rights reserved. Ditto and Simple Matters are registered trademarks of Simple Matters LLC. The Ditto apps are the property of Simple Matters LCC and are licensed by agreement to users. All other trademarks are property of their respective owners.

U.S. and foreign patents pending



Designed in California and assembled in China

ditto™

Quick Start Guide

Model D101

simple **matters**™