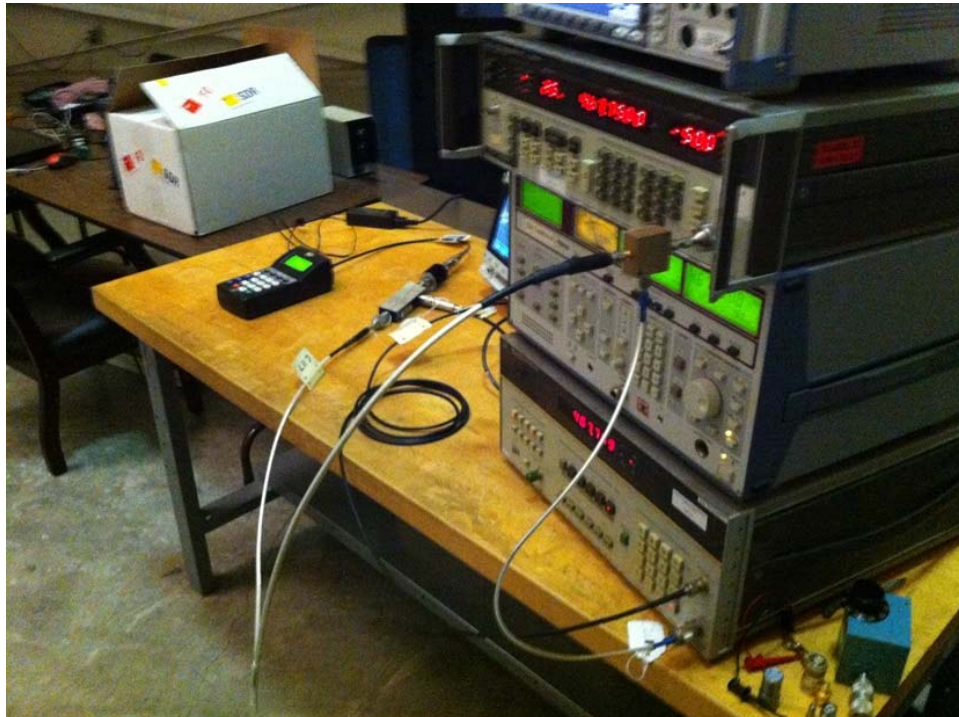




Conducted: Fundamental Power, Spurious, Bandwidth



Transmit Transient

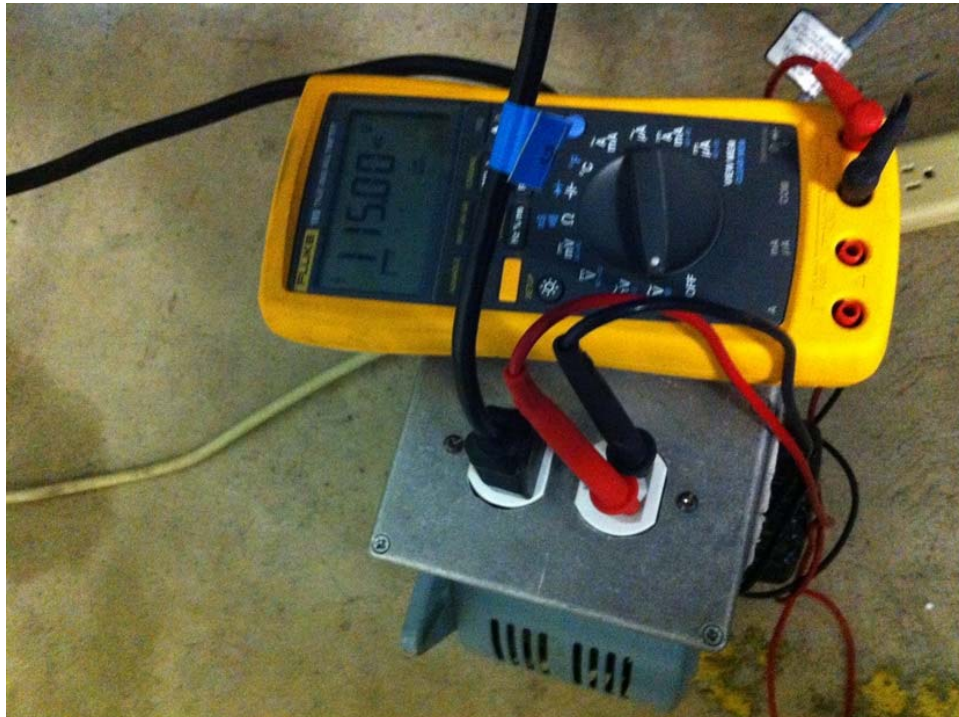


Frequency Stability – Temperatures, 1 of 2

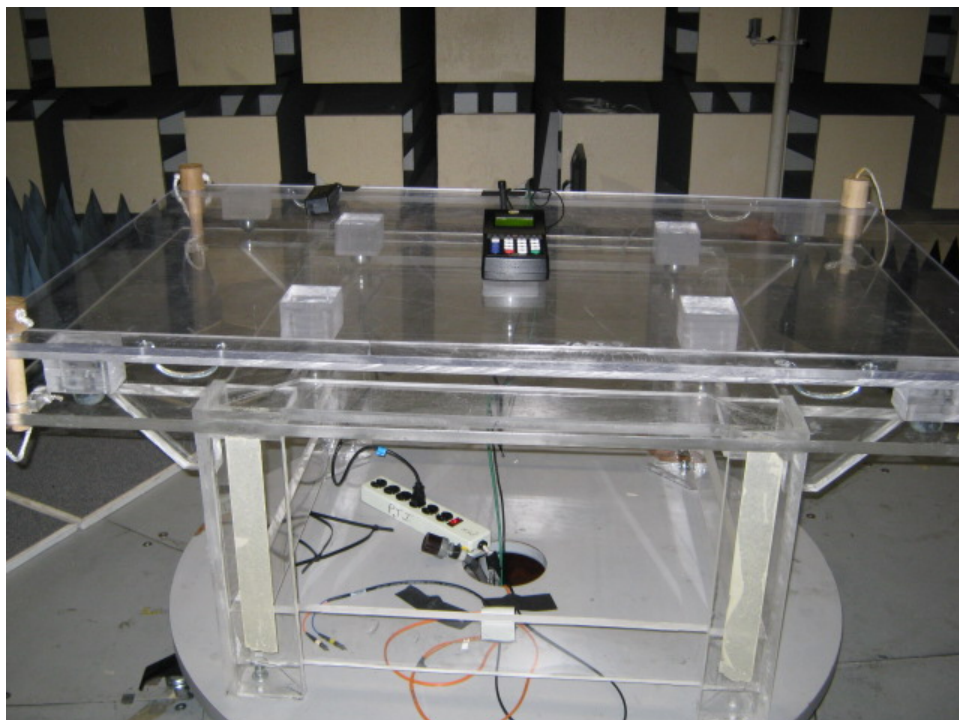




Frequency Stability - Temperatures, 2 of 2

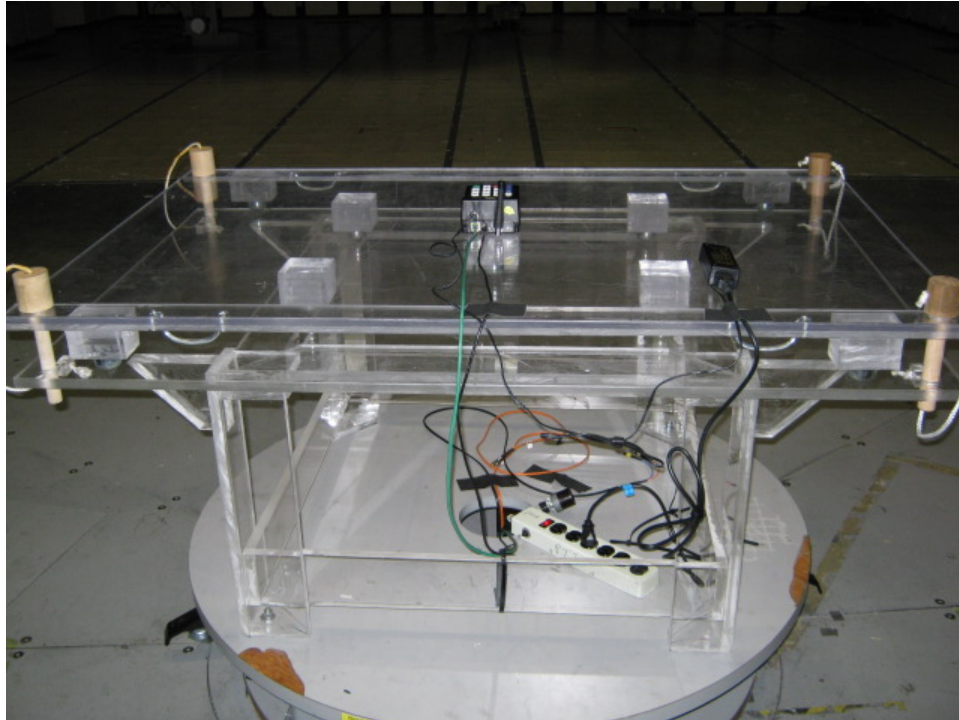


Frequency Stability, Mains Power  
(EUT in temperature chamber.)

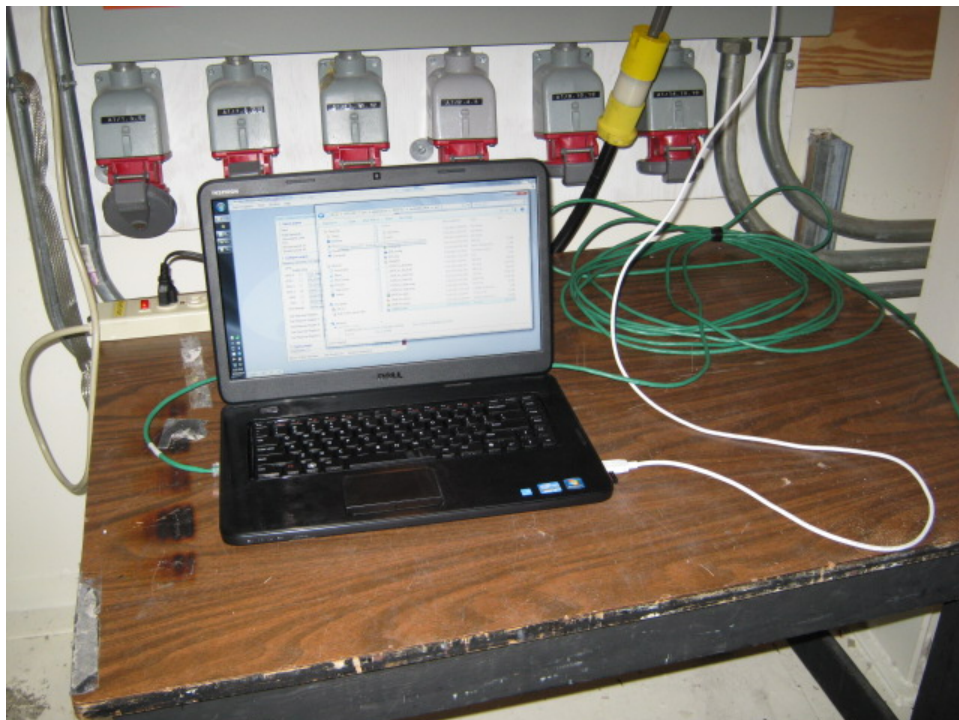


Radiated Emissions, Receive Mode, Front View

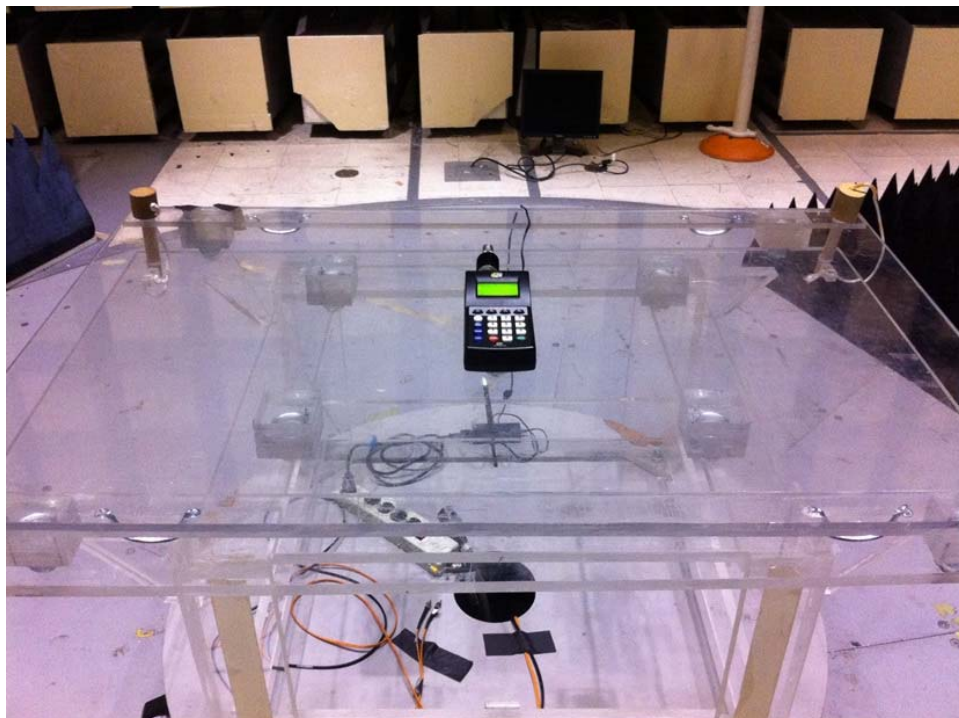




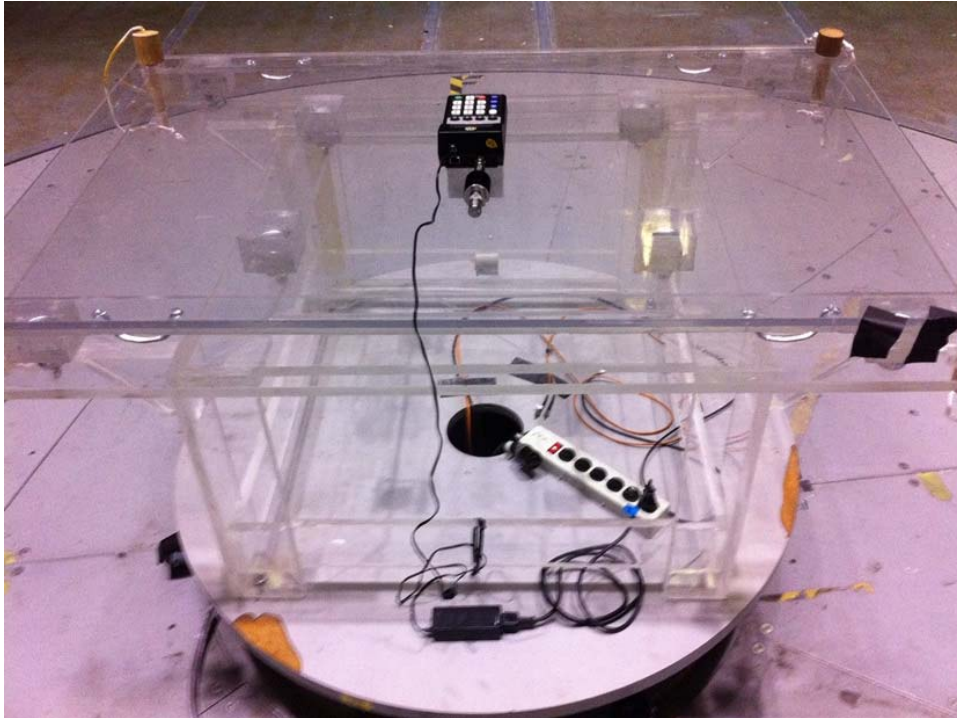
Radiated Emissions, Receive Mode, Rear View



Radiated Emissions, Receive Mode, Support Equipment in Subfloor Chamber



Radiated Emissions, Transmit Mode, Front View



Radiated Emissions, Transmit Mode, Rear View



Radiated Emissions, Transmit Mode, EUT Display with Scrolling Data

\*\*\*