



**7 INCH Tablet PC**  
**SC-3007**  
**User manual**

# Contents

IMPORTANT SAFETY INSTRUCTIONS.....	3
OVERVIEW .....	6
Location of controls.....	6
Keys.....	7
Touch operation.....	7
Tablet Applications.....	7
State Icons.....	8
Preparation.....	9
Connecting PC and Data Transmission.....	9
Charge.....	10
Use Micro SD card.....	10
Basic Function.....	12
Main screen.....	12
Main menu.....	12
Settings.....	13
Wireless and networks.....	14
Device.....	15
Personal.....	15
Accounts.....	16
System.....	17
Music.....	18
Video&Picture.....	18
Online.....	20
Camera.....	21
Email.....	22
Troubleshooting:.....	23
Product specification.....	25

# IMPORTANT SAFETY INSTRUCTIONS



The lightning flash with arrowhead symbol within an equilateral triangle is intended to alert the user to the presence of uninsulated dangerous voltage within the product's enclosure that may be of sufficient magnitude to constitute a risk of electric shock to persons.



The exclamation point within an equilateral triangle is intended to alert the user to the presence of important operating and maintenance (servicing) instructions in the literature accompanying the appliance.



**CAUTION**  
RISK OF ELECTRIC SHOCK  
DO NOT OPEN



**WARNING**  
TO REDUCE THE RISK OF FIRE OR ELECTRIC SHOCK, DO NOT EXPOSE THIS PRODUCT TO RAIN OR MOISTURE

**WARNING**  
TO REDUCE THE RISK OF FIRE OR ELECTRIC SHOCK, AND ANNOYING INTERFERENCE, USE THE RECOMMENDED ACCESSORIES ONLY.

Before using the unit, be sure to read all operating instructions carefully. Please note that these are general precautions and may not pertain strictly to your unit.

1) Read these instructions.

All the safety and operating instructions should be read before the product is operated.

2) Keep these instructions.

The safety and operating instructions should be retained for future reference.

3) Read all warning.

All warnings on the product and in the operating instructions should be adhered to.

4) Follow all instructions.

All operating and use instructions should be followed.

5) Do not use this apparatus near water.

Do not use this product near water and moisture, for example: near a bathtub, Wash bowl, kitchen sink or laundry tub; in a wet basement; or near a swimming pool.

6) Clean only with dry cloth.

Unplug this product from the wall outlet before cleaning. Do not use liquid cleaners or aerosol cleaners. Use a dry cloth for cleaning.

7) Do not block any ventilation openings. Install in accordance with the manufacturer's instructions.

8) Do not install near any heat sources such as radiators, heat registers, stoves, or other apparatus (including amplifiers) that produce heat.

9) Only use accessories specified by the manufacturer.

10) Power source

This product should be operated only from the type of power source indicated in the marking label. If you are not sure of the type of power supply to your home, consult your appliance dealer or local power company. For products intended to operate from battery power, or other source, refer to the operation instructions.

**Note:**

Refer all servicing to qualified service personnel. Servicing is required when the unit has been damaged in any such as the following: the power-supply core or plug has been damaged, liquid has been spilled into the unit, the unit has been exposed to rain or moisture, the unit has been dropped or the unit does not operate normally.

**This manual contains important safety precautions and information for correct usage. Please be sure to read this manual carefully before use to avoid any damage to the device.**

1. Do not place the product in hot, wet or dusty environments.
2. Do not place the product in hot environments. Especially in summer, do not place it in a car with all the windows closed or in the sun.
3. Avoid dropping or smashing the product and do not shake the TFT screen excessively as it may cause damage.
4. Select a suitable volume and avoid loud sound while using headphone/earphones. Turn down the volume or stop using the product if your ears start hurting or ringing.
5. In the following situations, please charge the product:
  - A. when battery is running low a pop up window will alert you to charge.
  - B. System automatically shuts down, and it turns off soon after restart.
  - C. Operation buttons do not work properly.
  - D. The unit will not turn on.

**Note:** Chargers of other models cannot be used for this device because they may cause damage to the device that will void the warranty. Please contact our customer service department if you need a replacement charger.

- Do not disconnect the device while formatting, downloading and/or uploading; otherwise, application errors may occur.
- We are not responsible for any memory erasure or loss caused by damage or product maintenance, or other personal reasons.
- Do not disassemble the product, and avoid cleaning the product with ethyl alcohol, thinner, or benzene.
- Do not use this product in areas which prohibit the use of electronic devices.
- Do not use this product while driving or walking in the street, as it may cause an accident.

**Notes:**

- This device is not waterproof.
- All images in this manual are for reference only. Specifications and appearance of the product and the screens are subject to change without prior notice.

# OVERVIEW

## Location of controls



- ① VOL- key      ② Micro SD      ③ VOL+ key      ④ Micro USB OTG  
⑤ Earphone hole      ⑥ Power key      ⑦      ⑧ Rear camera      ⑨ Speaker

## Keys

No.	Name	Function Definition
⑥	Power key	( 1 ) One long press (about 8sec) to power on the Tablet ( 2 ) One long press (about 8sec) to power off the Tablet ( 3 ) One short press(about 1sec) to activate from standby
①	VOL- Key	Use to decrease the volume
③	VOL+ Key	Use to increase the volume

## Touch operation

No.	Name	Function Definition
1	Short press	Means touching an icon for less than 1.2sec to activate it.
2	Long press	Means touching an icon for more than 1.2sec to activate it.
3	Slide/Drag operation	Means the touch trace direction. Mainly used in picture/page turning/drag etc.....
4	Hand written operation	It is mainly for typing characters/symbols.
5	Virtual key	It belongs to the virtual keyboard.

## Tablet Applications

Some applications can be customized according to the users' needs. The following list is the common basic applications:

Music 

picture library 

browser 

email 

Camera 

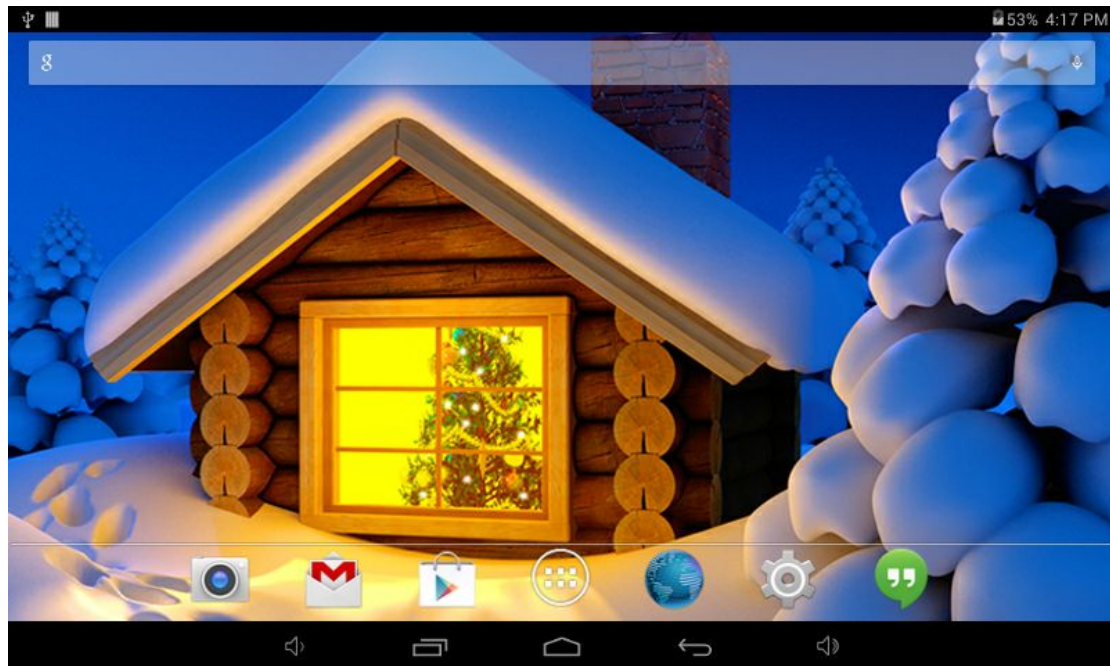
File Manager 

OWL Player 






Calendar 

## State Icons



The Status bar menu is as follows:







On the bottom of screen status bar, there are seven operation icons

Icons	Implications
Return soft key 	Go back /return to previous action
Home soft key 	Go back to Home screen
Shortcut key 	Shows all open applications as thumbnails, select one to open it to full screen.
Volume- 	Decrease Volume
Volume+ 	Increase Volume

The icons below display the current information of the tablet:

Icons	Implications
USB connecting state 	Display the USB connecting status
USB state 	Displays if the USB is connecting correctly.




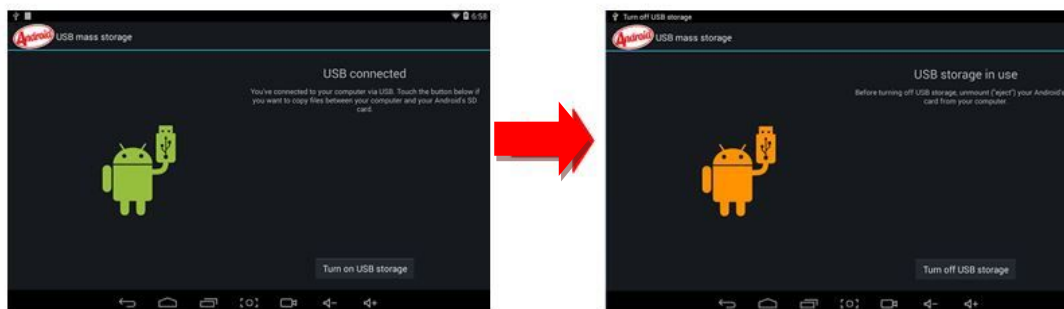
SD card connecting state 	Shows the status of the Micro SD socket.
Time 	Shows the current time
Wi-Fi 	Shows the signal strength of the wifi connection being used with the tablet
Battery 	Shows the current charge left on the battery.

# Preparation

## Connecting PC and Data Transmission

Connect your tablet to your PC by using the USB cable.

1. Use the provided USB cable to connect your PC and Tablet. The USB icon  will appear on the top left side of the status bar, it shows that the devices are connected. press the icon and slide down to open menu.
2. Activate the message USB connected “Touch to copy files to/from your computer. Now press “Turn on USB storage” Now you can transfer files.
3. Doing the above you can also access any inserted Micro SD card and transfer files to and from the PC to the Micro SD card. Press Turn off USB storage to end the connection.



**【Note】** : If you Micro SD card is formatted to NTFS, please safely remove them on your PC, then press “close USB storage device”, otherwise files may be lost, (below shows safely remove)



## Charge

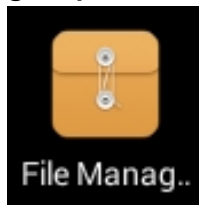
The tablet has a built-in high capacity Polymer Li-Ion-battery. You can charge the battery using the provided battery charger or by using the 5V USB output on a PC with the USB cable provided.

When the battery is low, a pop up window will remind you, so please make sure you always have your battery charged appropriately.

## Use Micro SD card

The Tablet is compatible with SD Micro cards up to 32MB to extend your memory on the Tablet. Please be careful when inserting and removing the Micro SD card.

## File Manager operation:



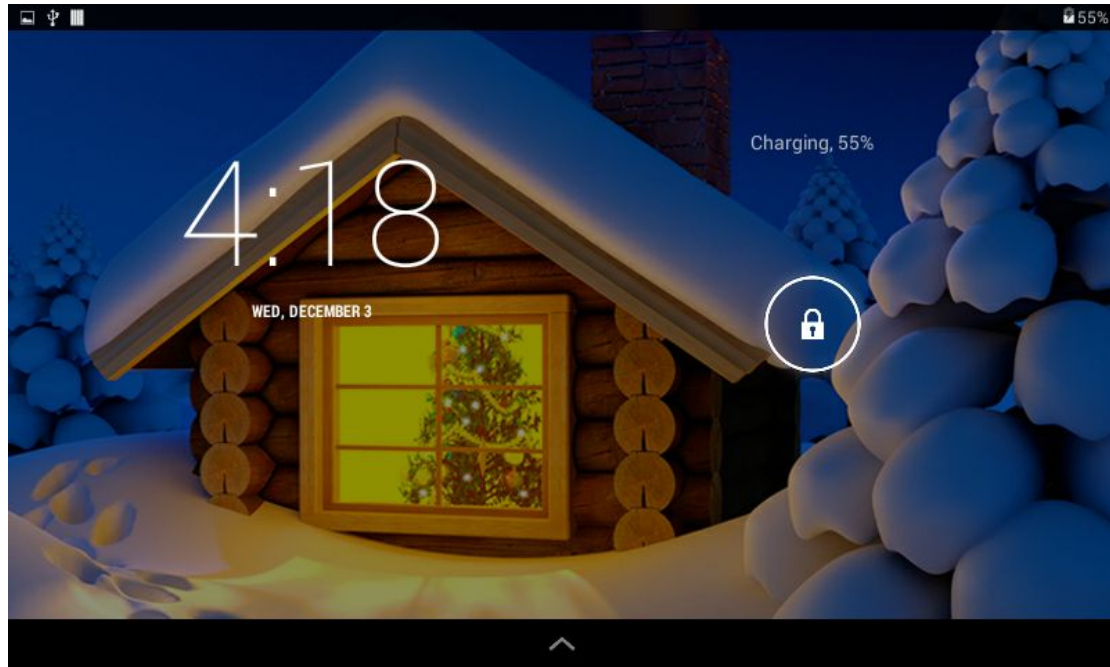
Click the File Manager application icon to view the files on all storage devices such as: SD Micro card, USB device. You can quickly and easily access and use any files on these devices.



# Basic Function



## Main screen

When you first start your tablet the tablet is set to lock the screen. To open you need to drag your finger over the padlock symbol to access your apps and files.




Once you have unlocked and are on the main apps screen you can quickly change the window by sliding left and right to view your apps. The tablet supports 5 windows.

## Main menu

To access the Main screen click on the Home symbol . Press the icon  at the bottom of the Home screen. All your apps will be visible on the screen, slide the window along to view them all.

## Open or switch applications

Select an app icon and press it to open. You can press the Home symbol  at any time to return to the main screen.

### **Add apps to the Home screen**

Press and hold your finger on the app you want to add to the home screen, after a few seconds a short cut to the app will automatically be created and visible on the home screen.



### **Zoom in or zoom out**

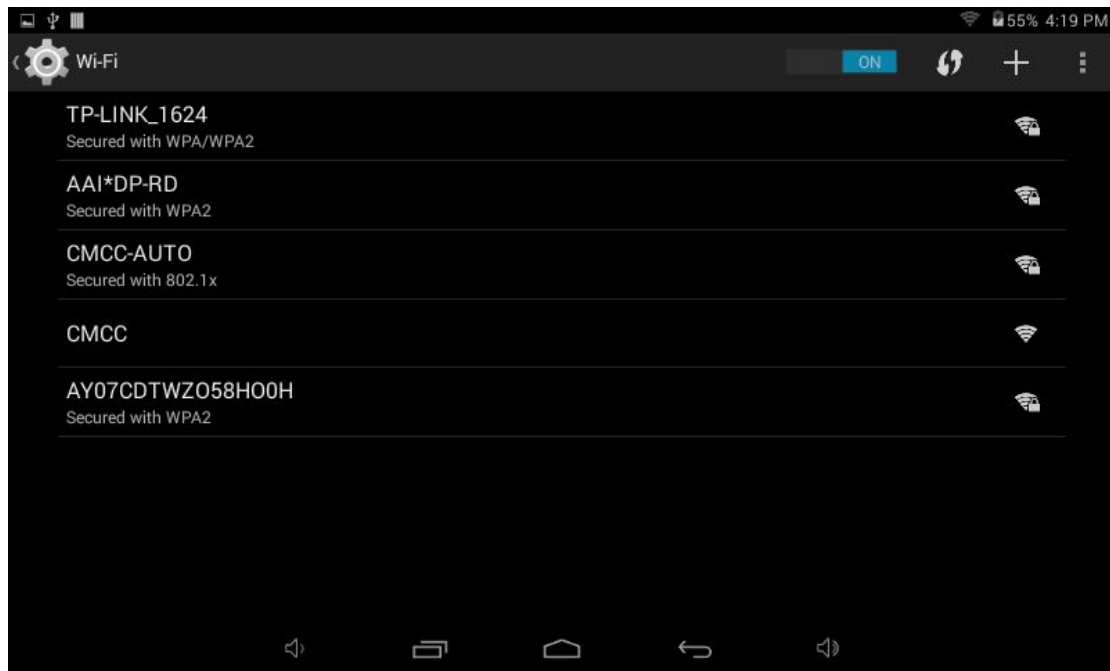
You can enlarge or make smaller your pictures or web viewing by opening and closing your thumb and index finger on the touch the screen.

### **View the tablet horizontal or vertical**

The tablet supports the screen rotation function. So whatever way you are viewing your tablet (wide or long) the screen will automatically adjust and rotate.


## Settings

On the Home screen press the app icon  and select , the settings consists of all wireless, networks , device options, personal options, accounts and system options.




## Wireless and networks

### 1. Connect to Wi-Fi:

- ( 1 ) The Wi-Fi option in Settings needs to be set to ON. Press your chosen Wifi connection and if needed add the Wi-Fi key.
- ( 2 ) After the tablet connects to your Wi-Fi network, the Wi-Fi status bar symbol  will show the signal strength.
- ( 3 ) Once the Wi-Fi connection has been connected. As long as you are in the wifi range of this network every time the tablet is turned on it will automatically connect.
- ( 4 ) In Settings set the Wi-Fi OFF to turn off the Wi-Fi function.

### Reminder:

- (1) Click the icon  on the top right side of the screen and more advanced options for Wi-Fi settings will be available. Each setting is explained on the screen of its function.

### 2. Data Usage Information

Displays the data traffic information, you can also see the information of applications used.

### 3. More

Set Airplane Mode, VPN, Portable hotspot, Mobile network, etc.

If you need to surf the Internet by 3G, first you need to turn off WIFI and Ethernet then plug the 3G dongle with SIM card to tablet's USB port. The tablet will connect the network automatically, once connected the 3G logo will appear in the menu.

## **Device**

Includes sound, display, storage, battery and applications.

### **1. Sound setting**

Enables the user to change all sound settings required for the Tablet and applications.

### **2. Display setting**

Enables the user to customize all aspects of the display on the tablet including Wall paper, Brightness, Font size ect.....

### **3. Storage**

Enables the user to see availability of memory available on all internal and external storage devices.

### **4. Battery**

Shows the level of battery charge still available.

### **5. Applications**

Shows a list of all applications stored on the tablet. By selecting an app you can see all the relative information you need to know regarding that app.

## **Personal**

### **1. Location services**

Allowing apps that use data from sources such as Wi-Fi and mobile networks to determine your approximate location, this system will collect these anonymous location data and send to Google. This can only be activated in the initial setup of the tablet if made available by you.

### **2. Security**

Includes screen security, passwords, device administrators and credential storage.

(1)Screen security:

Screen lock: Choose how and if you want the screen to lock.

Owner information: Set the owner information which will be displayed when the screen

is locked.

Passwords: Enables to display the characters or not option when typing in the password.

(2) Device administration:

- ① Device administrator: View or deactivate device administrators.
- ② Unknown sources: If apps are unknown or maybe dangerous, this setting will warn you each time an app is being downloaded from an unreliable source.

(3) Credential storage:

- ① Trusted credentials: Display confidential CA certification.
- ② Install from SD card: Install certification from SD card.
- ③ Clear evidence: Delete all certifications.

### **3. Language and input**

- (1) Language: Choose the language which you require.
- (2) Spelling checker: Will check and correct your on screen spelling.
- (3) Personal dictionary: Click the “ADD” button on the upper right side of screen; you can add vocabularies to create your own dictionary.
- (4) Keyboard and input: this option list the input installed in MID, you can do some related settings to each input.

### **4. Backup and reset**

- (1) Backup and restore
  - ① Backup my data: Back up app data, Wi-Fi passwords, and other settings to Google servers.
  - ② Backup account: Back up to debug-only private cache.
  - ③ Automatic restore: When reinstalling an app, restore backed up settings and data.
- (2) Personal data:

Factory data reset: Erase all data partition; clear all user data in tablet.

## **Accounts**

Manage accounts and synchronize information. Press “ADD an ACCOUNT” on the upper right side of screen, you can add Google account, company account or email account.



## System

### 1. Date and time

You can acquire date and time automatically or select the date and time manually.

### 2. Accessibility

(1) Large font: Select large font

(2) Autorotation screen: Turn on/off the screen rotation function

(3) System performance: there are three options, including “performance balanced” 、 “power saving prior” and “performance prior”.

① performance balanced: The tablet will adjust the power consumption to that of the performance of the Tablet. (Recommended option)

② Power saving prior: (Not recommended option)

③ performance prior: If you choose this option, the performance of tablet will be the best. Because of the large power consumption, the battery life will be reduced considerably.

**【Note】** : Some apps or games do not allow the screen rotation function. This is not a fault.

### 3. Developer options

This option is only used by developers.

### 4. Printing


With cloud print to a wireless printer you can print over the network to securely send files.

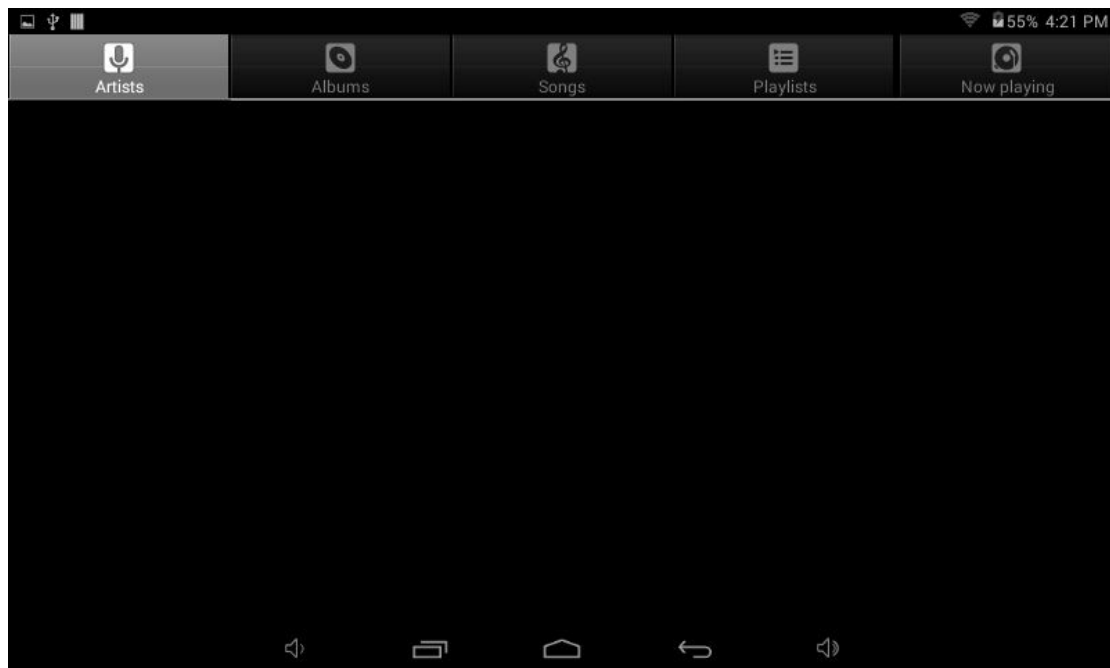
### 5. About tablet

On this option, you can check the status of the tablets, legal information, tablet model number, Android version, kernel version and build number.



# Music



1. Press  to enter the following music library, all the music files are listed separately on the basis of Artists, Albums, Songs, play list and now playing, press any option to enter the list.



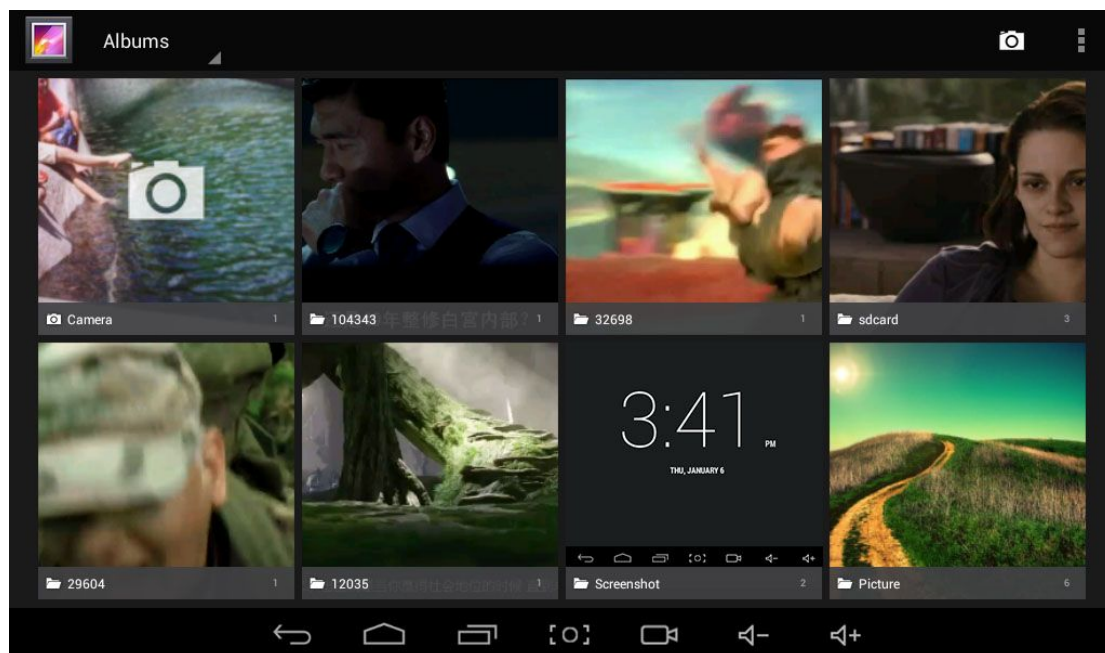
2. A long press on any song or folder name, you can add them to play list, delete them and search them.

You can play music while using other applications. Such as: while browsing pictures /read txt /surf the internet. When the music is playing in the background. On the top left side of the screen the status bar displays , press  and drag down to reveal your menu options to return to the music list.


## Video&Picture

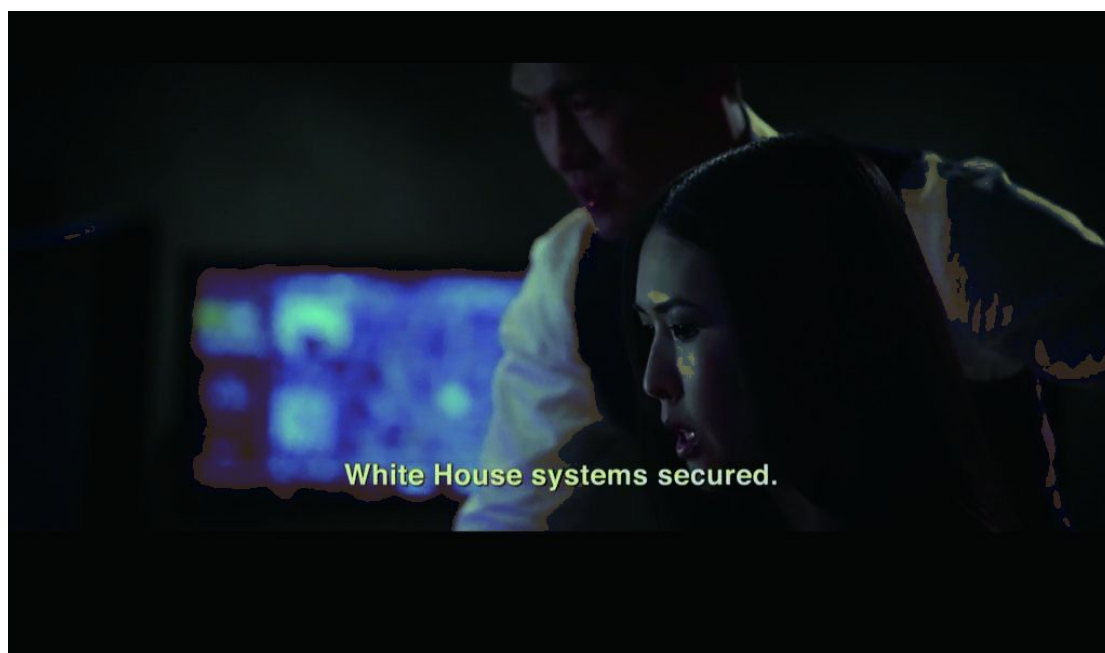


Click the picture library  to view your pictures / images:



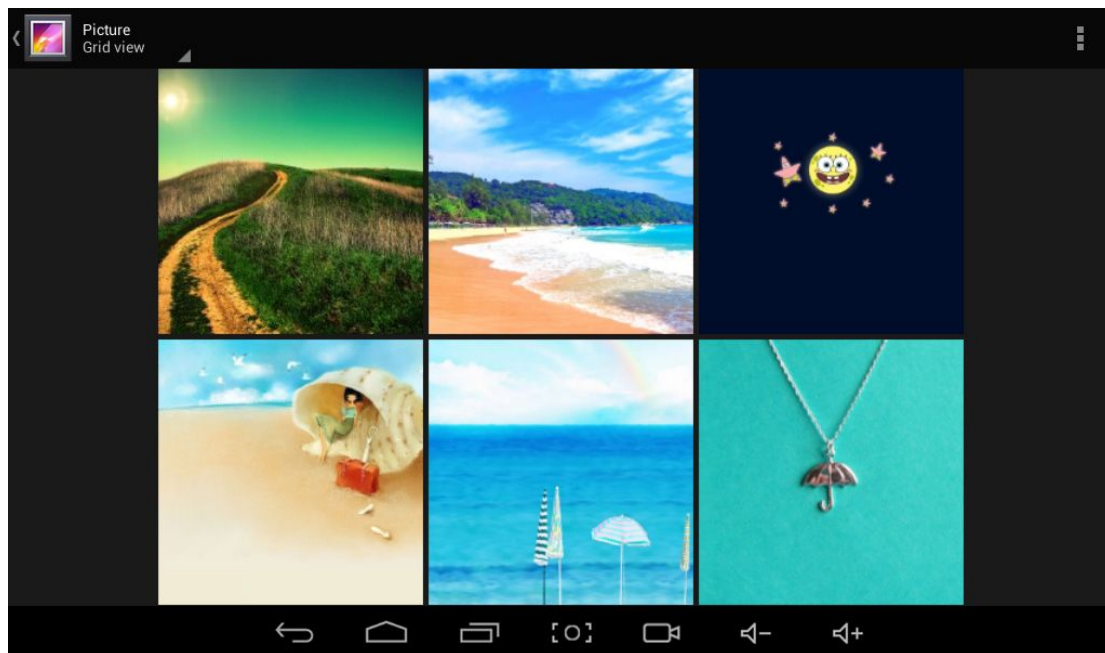
## Video play


Press video folder, and wait a minute. After analyzing, press  to start play, displaying as follows:

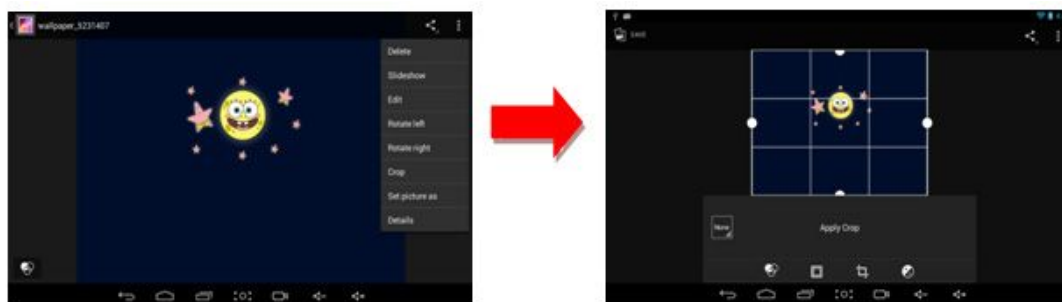


## Picture viewing

Choose picture folder, shown as the following screenshot:




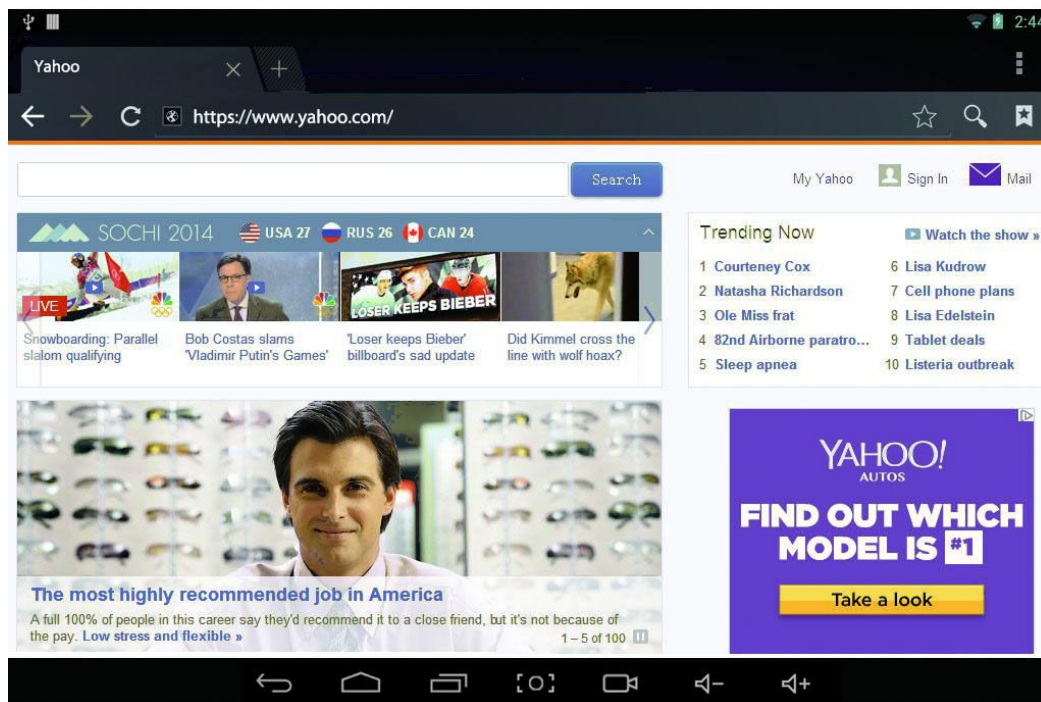
Click the icon , you can choose from the options slideshow, editing, rotating left, rotating right, cropping etc. If you choose “crop”, you can cut and resize the picture. After selecting the area you want to crop, press the “OK” button on the top left of the screen.



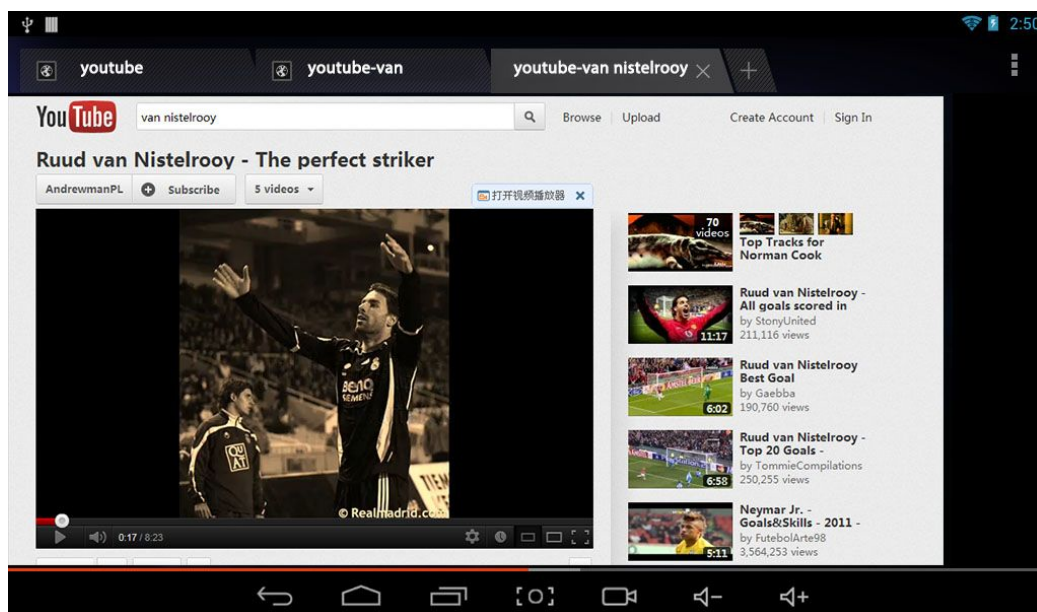
## Online



Open the browser by pressing , enter webpage. Before surfing the Internet, ensuring your tablet has been connected to the Wi-Fi, 3G or Ethernet.  
Example of Yahoo web page below:



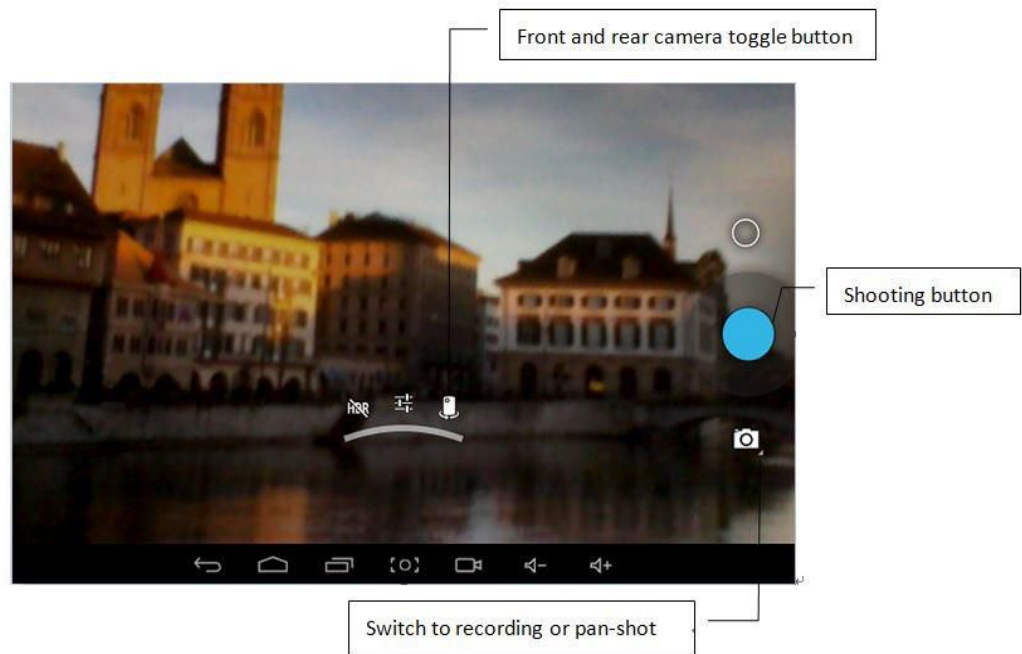
Online video play, such as on sites like Youtube:



## Camera



Press the symbol to operate the camera function.

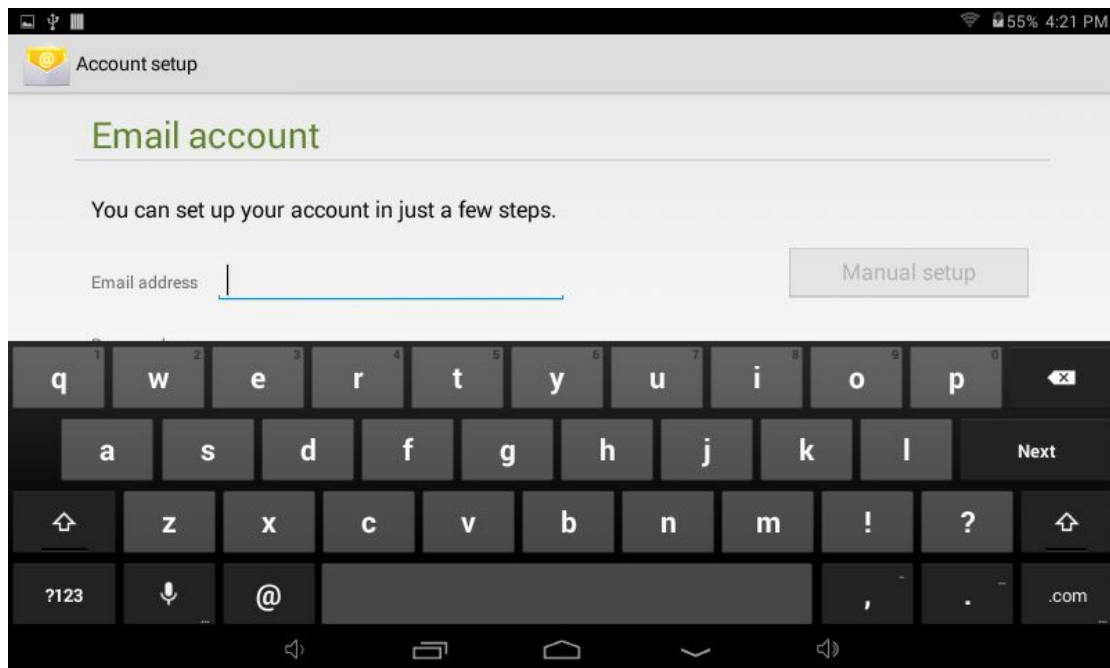


select pan-shot, press photograph icon, move the lens left or right slowly to take photos. Slide the screen to the left to view your photos or videos.

## You can send or receive emails



Click Email , and login your account and password, then you can send emails





# Troubleshooting:

- Cannot power on the Device
  - ◆ Connect the supplied AC/DC Adapter.
- Can not go online
  - ◆ Check if your Wi-Fi setting is correct, correct password may be needed.
  - ◆ Check if your router is working properly.
  - ◆ Check your signal bar on the Device. It may not be connected due to weak signal.
- How to buy/download the applications from the internet
  - ◆ Make sure your device is already connected to the Wi-Fi/ network.
  - ◆ Search, Buy, Download and Install the desired applications by following the on screen instruction.

## **Warning:**

**Personal details and Credit Card information may be required, please stay Alert !**

- Unable to Read E-books
  - ◆ Some online bookshops require their own application to buy, download, read and manage e-book purchases. Applications can be downloaded from the web or by going into the Opera Mini or Amazon APP store and searching for a suitable one.
  - ◆ Barnes and Nobles uses its own reader application, called "Nook". Most other book stores will use third party applications such as Aldiko, which can be downloaded from the Opera Mini or Amazon APP store.
- How to copy and read PDF-DRM and EPUB-DRM books from PC?
  - ◆ The tablet does not support PDF and EPUB-DRM eBooks to be transferred from PC.
- Media files can't be found:
  - ◆ If new files were added onto the device; click the "File Manager" icon on the APPS menu to search.
  - ◆ Use correct Apps to open corresponding media files. Click "OWL Player" to play video files. Click "Gallery" to view photos. Click "Music" Player to play music.
- Can't find the desired button within the screen
  - ◆ Use the arrow keys to scroll Up and Down (Right to Left) to display the buttons behind the main screen.
- Can't turn to next page in e-book reading
  - ◆ Double left click on the mouse or press & hold left mouse button to go from right to left to turn to next page.
- How to enter the Settings menu while applications/programs are running
  - ◆ After turning on the application/program, click the Option button where is normally listed on the bottom of the screen to enter settings menu. Set each setting as instructed by the on screen instructions (functions depend on the software of the applications).
- Cannot connect to Wi-Fi or the Wi-Fi signal is weak

- ◆ Make sure Wi-Fi is available in your location and you are authorized (with correct password) to connect to it.
- ◆ The device may be too far from the signal source. Move your device closer to the signal source.
- How to remove personal data/email accounts from the device:
  - ◆ In the settings menu, select and enter “Backup & reset” setting.
  - ◆ Click “Factory data reset” button to enter.
  - ◆ Click “Reset tablet ” button.
  - ◆ Click “Erase SD card” button to start reset. Wait until the device finishes resetting by itself. The device will turn off automatically. (It may need a few minutes).

**IMPORTANT:**

**After Factory Data reset, all users’ data (users installed applications, passwords, e-mail accounts, g-mail accounts, media files etc...) will be deleted. Backup this data before resetting.**

**Precautions:**

For the correct use and good performance of the player, the user must fully understand the manual as well as following the instructions provided.

- Please avoid high temperatures (over 35 °C) or low temperatures (below -5 °C).
- Avoid any impact to the tablet.
- Never let the tablet come into contact with chemicals such as benzene, thinner etc.
- Do not use the tablet close to strong magnetic fields, electric field etc.
- Keep away from direct sunlight or heating appliances.
- Never privately disassemble, repair or modify the tablet.
- Using the tablet and the earpiece during bicycling, driving a car and motorcycling are likely to cause danger.
- Loud music can damage the ears. Be careful with loud volume.



# PRODUCT SPECIFICATIONS

SC-3007 Technical Data		
Processor	A33 Quad core 1.5 GHz CortexA7	
SDRAM	512 MB DDR3	
Flash memory	Integrated 8GB External SD card up to 32 GB	
Wi-Fi	IEEE802.11 b/g/n Wireless internet	
USB and HDMI	USB 2.0 OTG high speed and HDMI connection	
Screen	Dimensions	7" TFT screen
	Resolution	800x480
	Characteristics	Multi touch screen
Operating System	ANDROID 4.4.2	
Others	Dimensions	192*117*11.7 mm
	Weight	gr
	Battery	Lithium Polymer 2800 mAh, 3,7V
Accessories	Charger Input: AC100V~ 240 50/60 Hz, Output: 5V DC 2 A USB cable, AC Adapter, User manual.	



## FCC Information and Copyright

This equipment has been tested and found to comply with the limits for a Class B digital device, pursuant to part 15 of the FCC Rules.

These limits are designed to provide reasonable protection against harmful interference in a residential installation. This equipment generates,

uses and can radiate radio frequency energy and, if not installed and used in accordance with the instructions, may cause harmful interference

to radio communications. However, there is no guarantee that interference will not occur in a particular installation. If this equipment does

cause harmful interference to radio or television reception, which can be determined by turning the equipment off and on, the user is

encouraged to try to correct the interference by one or more of the following measures:

- Reorient or relocate the receiving antenna.
- Increase the separation between the equipment and receiver.
- Connect the equipment into an outlet on a circuit different from that to which the receiver is connected.
- Consult the dealer or an experienced radio/TV technician for help.

### 15.19 Labelling requirements.

This device complies with part 15 of the FCC Rules. Operation is subject to the following two conditions:

- (1) This device may not cause harmful interference, and
- (2) this device must accept any interference received, including interference that may cause undesired operation.

changes or modifications not expressly approved by the party responsible for compliance could void the user's authority to operate the equipment.

**FCC RF warning** statement: the device has been evaluated to meet general RF exposure requirement , The device can be used in portable exposure condition without restriction.