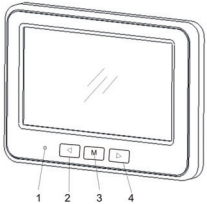


OPERATION

Testing the System

- 1.The blue LED will light when power is on.
- 2.With the park brake applied,turn the vehicle ignition switch to the ON position. Do not start the vehicle.
- 3.Shift the vehicle to reverse to power the transmitter.The blue power LED will light continuously and the monitor will display the image from the camera.
- 4.If the image does not display, check your connections and make sure the camera view is not obstructed.

7.Monitor Controls



Legend
1.Power LED
2.Up Button
3.Menu Button
4.Down Button

Blue Power LED

The LED will blink when the monitor has power and is turned on, but the vehicle is not in reverse (standby mode). When the vehicle is in reverse, and the monitor has power and is turned on, the LED will light continuously.

Adjusting Monitor Settings

To adjust the following monitor settings, make sure the park brake is applied, turn the ignition switch to the ON position and shift the vehicle to reverse.

NOTE In extremely bright conditions, the screen image may take a few seconds to stabilize. Wait until the image has stabilized before backing up.

- 1.Press the menu button to bring up the settings screen.
- 2.Press the menu button to scroll through the different adjustments. Press the up button to increase or the down button to decrease settings.
- 3.The monitor can be mounted in any position. To change the view on the screen, scroll to direction. Press the up or down button to change the view and display the image correctly.
- 4.To exit, scroll to exit and press the down or up button.
- 5.To turn the guidelines on or off, press the guidelines button.

-5-

TROUBLESHOOTING

Problem	Situation	Action
Monitor display is blank or unclear	The camera lens is covered with snow, mud, ice, etc.	Clean lens.
	The camera is mounted incorrectly	Check camera location and alignment. Realign as necessary.
No power to the monitor or camera		Ensure all wires are correctly connected to the monitor, transmitter, camera and into the vehicle reverse light circuit.
		Check all wire connections and splices for proper connection
Camera is angled incorrectly		Adjust camera angle
Screen settings are incorrect		Adjust screen using monitor buttons.
Monitor is angled incorrectly		Adjust monitor angle using adjustment knobs

FCC INFORMATION

This device complies with Part 15 of the FCC rules. Operation is subject to the following two conditions: 1) this device may not cause harmful interference, and 2) this device must accept any interference received, including interference that may cause undesired operation.

Note: This equipment has been tested and found to comply with the limits for a Class B digital device, pursuant to part 15 of the FCC Rules. These limits are designed to provide reasonable protection against harmful interference in a residential installation. This equipment generates uses and can radiate radio frequency energy and, if not installed and used in accordance with the instructions, may cause harmful interference to radio communications. However, there is no guarantee that interference will not occur in particular installation. If this equipment does cause harmful interference to radio or television reception, which can be determined by turning the equipment off and on, the user is encouraged to try to correct the interference by one or more of the following measures:

- Reorient or relocate the receiving antenna.
- Increase the separation between the equipment and receiver.
- Connect the equipment into an outlet on a circuit different from that to which the receiver is connected.
- Consult the dealer or an experienced radio/TV technician for help.

Changes or modifications not expressly approved by the party responsible for compliance could void the user's authority to operate the equipment.

This equipment complies with FCC radiation exposure limits set forth for an uncontrolled environment. User should avoid un-intended operation of usage when it is collocated with other transmitters or antenna. The distance between user and products should be no less than 20cm

-7-

CARE AND MAINTENANCE

Storage

Store this Back-Up Camera in a cool, dry area and keep it away from direct sunlight, heat, excessive humidity and dampness.

Cleaning

Do not clean or wipe the Back-Up Camera with solvents or chemical materials. If necessary, remove dirt or stains using a soft cloth dampened with a mild detergent solution.

Fuse Replacement

1. Turn the cap on the tip of the power plug counterclockwise(no tools needed.)
2. Remove the cap, center pin and fuse.
3. Replace the fuse with a new 1-amp fuse.
4. Replace the center pin and cap. Turn the cap clockwise.

Disposal

The Back-U Camera is designed to provide years of service. The Back-Up Camera should be recycled or safely disposed of at a local recycling center. Examples of places that will accept items like this are: county or municipal recycling drop-off centers or scrap metal dealers.

SPECIFICATIONS

Camera	
Current consumption (with transmitter)	<250 mA
Pixels	640 x 480
View angle (measured 9.8 ft [3 m]from camera)	120 ±15
Power cord fuse	DC12-24V 1A
Transmitter	
Frequency	2414 ±0.3 MHz
RF transmission distance	495 ft (150 m)
Operation/storage temperature	14-140F(-10-60C)
Monitor	
LCD display screen size	4.3 in. (109 mm)
Power cord fuse	DC 5V 1A

-6-

LIMITED WARRANTY

Manufacturer warrants to the original consumer, or purchaser, that the PEAK, PKCOBU4 4.3-inch Back-Up Camera will be free from defects in material and workmanship for 1 year from the date to the original purchaser. Manufacturer hereby excludes and disclaims any and all other warranties, expressed or implied, beyond those warranties specified above. Manufacturer excludes any implied warranty of merchantability or fitness for a particular purpose.

IF YOUR PEAK, BACK-UP CAMERA MALFUNCTIONS DUE TO A DEFECT IN MATERIALS AND WORKMANSHIP WITHIN THE ONE YEAR WARRANTY PERIOD, MANUFACTURER WILL, AT ITS ELECTION REPAIR OR REPLACE IT.MANUFACTURER SHALL NOT, HOWEVER, BE RESPONSIBLE FOR ANY DAMAGE TO YOUR PRODUCT DUE TO ANY CAUSE OTHER THAN DEFECTS IN MATERIAL OR WORKMANSHIP, INCLUDING WITHOUT LIMITATION: FAILURE TO FOLLOW INSTRUCTIONS FOR USE; MISUSE; REPAIRS BY AN UNAUTHORIZED PERSON; MISHANDLING; MODIFICATIONS; NORMAL WEAR AND TEAR; ACCIDENT OR OVERLOAD. REPAIR OR REPLACEMENT AS PROVIDED UNDER THIS WARRANTY IS THE EXCLUSIVE REMEDY OF THE CONSUMER. MANUFACTURER SHALL NOT BE LIABLE FOR ANY INCIDENTAL, CONSEQUENTIAL OR PUNITIVE DAMAGES FOR BREACH OF ANY EXPRESSED OR IMPLIED WARRANTY ON THIS PRODUCT OR BASED ON ANY OTHER CAUSE OR CLAIM.

To Obtain Service:

1. Product to the place of purchase for service. Send your unit, postage prepaid and insured, along with a copy of the original sales receipt and a phone number to the address below. Pack your unit properly, as we are not responsible for any damage caused during shipping.
2. A copy of the original receipt is required for warranty service. If no receipt is provided, the unit manufacturer's date will be used as the date of purchase.

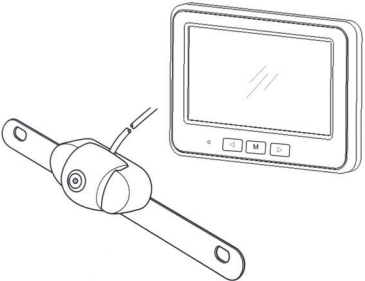
All Rights Reserved
MADE IN CHINA

-8-

WIRELESS BACK-UP CAMERA

WITH 4.3 INCH
COLOR LCD MONITOR

User Manual and Warranty Information



Read these instructions completely before using this Product
Retain this Owner's Manual for future reference.

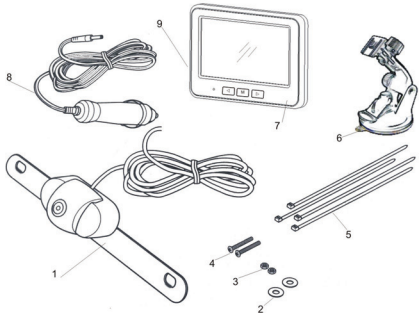
-1-

INTRODUCTION

The Back-Up Camera displays images behind the vehicle, and is used when backing up a vehicle. When the vehicle is driven in reverse, the camera is activated, which sends a signal to the Transmitter. The transmitter sends a video signal to the monitor, which then displays the view captures by the camera.

FEATURES

Color monitor displays view from the rear of the vehicle
Wireless monitor can be suction-mounted to windshield or dash for easy visibility
Adjustable monitor mounting arm
Adjustable vertical camera angle
Weatherproof camera with 120 viewing angle
Reduce the danger of harm or damage due to unseen objects
System activates automatically when car is shifted into reverse



Legend

- 1.Wireless Camera
- 2.Washers
- 3.Lock nuts
- 4.Screws
- 5.Ties
- 6.Monitor Arm
- 7.Wireless Monitor (Built-in Transmitter)
- 8.Monitor Cigarette Lighter/Accessory Socket Power Cord
- 9.Monitor Power Port(USB)

-3-

CONTENTS

SAFETY PRECAUTIONS.....	2
Back-Up Camera Safety.....	2
INTRODUCTION	3
FEATURES	3
INSTALLATION	4
OPERATION	5
CARE AND MAINTENANCE.....	6
Storage	
Cleaning	
SPECIFICATIONS	6
TROUBLESHOOTING	7
FCC INFORMATION.....	7
LIMITED WARRANTY.....	8

SAFETY PRECAUTIONS

WARNING This product contains a chemical known to the State of California to cause cancer or birth defects or other reproductive harm.

This safety alert symbol indicates that a potential personal injury hazard is present. The symbol is usually used with a signal word (e.g., WARNING) which designates the degree or level of hazard seriousness. The signal word WARNING indicates a hazardous situation which, if not avoided, could result in or serious injury. The signal word NOTICE indicates a situation which can cause damage to the product, other personal property and/or to the environment, or cause the product to operate improperly. The combination of the safety alert symbol and signal word is used in safety messages throughout this manual and on safety labels on this product.

WARNING All safety messages that follow have WARNING level hazards. Failure to comply could result in death or serious injury.

Back-Up Camera Safety

- Please check with your local and state authorities to confirm what is legal regarding the mounting of the Back-Up Camera to your vehicle. It is the responsibility of the vehicle owner to understand state and municipal regulations and ensure compliance.
- When installing the Back-Up Camera, the vehicle must be turned off with the vehicle in park and the park brake applied.
- Do not attempt to install the Back-Up Camera while the engine is operating.
- Do not modify the wiring in any way.
- Only install the Back-Up Camera to a 12-volt DC system. Connecting to anything other than a 12-volt DC system may damage the Back-Up Camera components or the vehicle electrical system.
- If you are not confident working with 12-volt DC vehicle wiring, have the Back-Up Camera professionally installed.
- This device as well as other wireless devices may be subject to interference. Interference may be caused by cell phones, Bluetooth headsets, Wi-Fi routers, power lines and other various electrical equipment.
- Keep all power cords and wires away from the vehicle's mechanical controls.
- Do not mount the monitor where it will interfere with your view of the road
- Do not adjust monitor settings while operating the vehicle
- Do not install the Back-Up Camera to the front of your vehicle.
- Do not use in a vehicle which has an alarm or horn when driving in reverse.
- Do not paint or spray the camera.

-2-

INSTALLATION

NOTICE

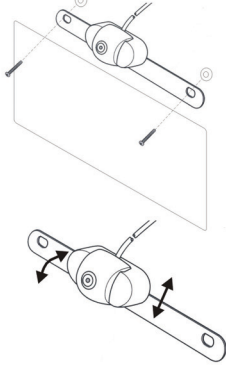
Some states or local governments may have regulations or laws that restrict the use of anything that might impair the clear view of a license plate. Check local laws for compliance.

NOTICE

For the Back-Up Camera to be properly installed, it must be wired into the vehicle's taillight harness. If you are not comfortable or knowledgeable with 12-volt DC wiring, have the system professionally installed.

NOTICE

These instructions are only meant as a general guide due to the number of different makes and models of vehicles. For vehicle-specific questions, contact your vehicle's manufacturer.



- 1.Remove the screws that hold the license plate to the vehicle.
- 2.Position the camera mounting plate behind the license plate.
- 3.Insert the screws through the license plate the camera mounting plate and the washers. If your hardware is not the correct length, use the supplied hardware.

NOTICE

The camera angle should be adjusted to a horizontal position relative to the ground,so as to provide an optimal view of objects behind the vehicle.

4. Adjust the camera as required:
 - To adjust the camera angle, tilt the camera to one of the five positions.
 - The camera should be adjusted to a horizontal position relative to the ground, so as to provide optimal view of objects behind the vehicle.
 - To adjust the camera height, remove the camera adjusting screws, move the camera to line up with the desired holes and install the camera adjusting screws. Make sure the arrows on the back of the camera are pointing upward.

-4-