

ZENI LITE BUOY CO., LTD.



AIS Aids to Navigation Transceiver Installation and operation manual

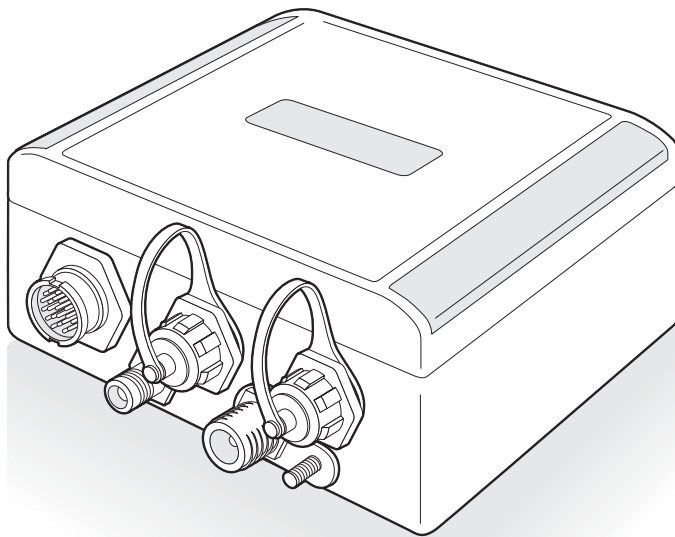


Table of contents

1	Glossary	1
2	Notices	3
2.1	Safety warnings	3
2.2	General notices	3
2.3	Regulatory information	3
3	Introduction	5
3.1	About AIS	5
3.2	System overview	6
3.3	Supported AIS messages	7
4	AIS AtoN product variants	9
5	Installation	10
5.1	What's in the box	11
5.2	Preparing for installation	12
5.3	Mounting the transceiver	13
5.4	Transceiver connections	14
5.5	Connecting power	20
5.6	Installing and connecting the VHF antenna	21
5.7	Installing and connecting a GNSS antenna	22
5.8	Installing the earth connection	22
6	Connecting external sensors and systems	23
6.1	Basic transceiver interfacing	23
6.2	Advanced transceiver interfacing	25
7	Configuration using proAtoN	31
7.1	proAtoN Installation	31
7.2	Application layout	31
7.3	Transceiver configuration	33
7.4	Transceiver diagnostics	41
7.5	Other features	44
8	Operation	45
8.1	Standby operation	45
9	Data messages and data sources	46
9.1	Product variants without the extended sensor interface	46
9.2	Variants with the extended sensor interface	46
10	Manual configuration	53
10.1	Basic Type 1 AIS AtoN configuration (FATDMA operation)	53
10.2	NMEA0183 / IEC61162 configuration sentences	53
10.3	Proprietary configuration sentences	59
11	Technical specification	62
11.1	Applicable equipment standards	62

11.2	AIS Transceiver specification	62
11.3	Configuration interface specification	65
11.4	Drawings and dimensions.....	66
12	Firmware upgrade procedure	67

List of figures

Figure 1	The AIS network	5
Figure 2	Typical AIS AtoN system	6
Figure 3	Typical AIS AtoN system connections	10
Figure 4	What's in the box - typical configuration	11
Figure 5	Mounting the transceiver	13
Figure 6	Transceiver connector locations	14
Figure 7	Accessory cable.....	15
Figure 8	Pin numbering for 18 way connectors 1 and 2	17
Figure 9	Connecting power.....	20
Figure 10	VHF antenna, GPS antenna and earth stud connection.....	21
Figure 11	USER_IO pins reference circuit.....	24
Figure 12	Lamp current sense loop circuit.....	26
Figure 13	Isolated digital input reference circuit	28
Figure 14	Non Isolated digital input reference circuit.....	29
Figure 15	Relay drive output reference circuit	30
Figure 16	proAtoN application layout.....	31
Figure 17	proAtoN tab synchronisation icons	32
Figure 18	proAtoN message schedule tab layout.....	34
Figure 19	Example FATDMA schedule.....	36
Figure 20	Example RATDMA schedule	37
Figure 21	Virtual AtoN configuration tab layout	38
Figure 22	Status input configuration tab layout.....	39
Figure 23	Alert messages configuration tab layout.....	40
Figure 24	Transceiver dimensions.....	66
Figure 25	vxsend utility screenshot.....	67

1 Glossary

AIS	Automatic Identification System
AtoN	Aid to Navigation
BIIT	Built In Integrity Test
FATDMA	Fixed Access Time Division Multiple Access
GLONASS	Global Navigation Satellite System (term specific to the satellite navigation system operated by the Russian Federation)
GNSS	Global Navigation Satellite system (general term used to refer to any satellite navigation system)
GPS	Global Positioning System
IALA	International Association of Lighthouse Authorities
IEC	International Electrotechnical commission
ITU	International Telecommunication Union
MID (in the context of MMSI)	Maritime Identification Digits
MMSI	Maritime Mobile Service Identity
NMEA	National Marine Electronics Association
RACON	A radar transponder used to mark navigational hazards.
RATMDA	Random Access Time Division Multiple Access
RS232	Serial data communications standard - see TIA-232-F
RS422	Serial data communications standard see TIA-422-B
SART	Search And Rescue Transponder
SOLAS	Safety of Life at Sea
SDI-12	Serial Data Interface at 1200 Baud
USB	Universal Serial Bus
UTC	Coordinated Universal Time
VDL	VHF Data Link
VHF	Very High Frequency
VSWR	Voltage Standing Wave Ratio

2 Notices



When reading this manual please pay particular attention to warnings marked with the warning triangle symbol shown on the left. These are important messages for safety, installation and usage of the transceiver.

2.1 Safety warnings



This equipment must be installed in accordance with the instructions provided in this manual. Failure to do so will seriously affect its performance and reliability. It is strongly recommended that a trained technician installs and configures this product.



This equipment is intended as an aid to navigation and is not a replacement for proper navigational judgement. Information provided by the equipment must not be relied upon as accurate. User decisions based upon information provided by the equipment are done so entirely at the users own risk.

2.2 General notices

2.2.1 Position source

All marine Automatic Identification System (AIS) transceivers utilise a satellite based location system such as the Global Positioning Satellite (GPS) network. The general term for satellite based location systems is Global Navigation Satellite System or GNSS. This manual refers to either GNSS or GPS depending on context.



The accuracy of a GNSS position fix is variable and affected by factors such as the antenna positioning, how many satellites are used to determine a position and for how long satellite information has been received.

2.2.2 Product category

This product is categorised as 'exposed' in accordance with the definitions provided in IEC 60945.

2.2.3 Disposal of the product and packaging

Please dispose of this product in accordance with the European WEEE Directive or with the applicable local regulations for disposal of electrical equipment. Every effort has been made to ensure the packaging for the product is recyclable. Please dispose of the packaging in an environmentally friendly manner.

2.2.4 Accuracy of this manual

This manual is intended as a guide to the installation, setup and use of this product. Every effort has been made to ensure the accuracy of this manual, however due to continuous product development this manual may not be accurate in all respects, therefore no guarantee is offered. If you are in any doubt about any aspect of this product, please contact your supplier.

The part number and revision number of this manual are shown on the rear cover.

2.3 Regulatory information

2.3.1 Declaration of conformity - R&TTE

The manufacturer of this product declares that this product is in compliance with the essential requirements and other provisions of the R&TTE directive. The declaration of conformity is provided with the product document pack. The product carries the CE mark, notified body number and alert symbol as required by the R&TTE directive. The product is intended for sale in the following member states: Great Britain, France, Spain, Sweden, Austria, Netherlands, Portugal, Denmark, Norway, Belgium, Italy, Finland, Ireland, Luxembourg, Germany and Czech Republic.

CE0168①

2.3.2 FCC notice

This equipment has been tested and found to comply with the limits for a class B digital device, pursuant to part 15 of the FCC Rules. These limits are designed to provide reasonable protection against harmful interference in a residential installation. This equipment generates, uses and can radiate radio frequency energy and, if not installed and used in accordance with the instructions, may cause harmful interference to radio communications.

This device complies with part 15 of the FCC Rules. Operation is subject to the following two conditions: (1) This device may not cause harmful interference, and (2) this device must accept any interference received, including interference that may cause undesired operation.

Changes or modifications not expressly approved by the party responsible for compliance could void the user's authority to operate the equipment.

2.3.3 Industry Canada notice

This device complies with Industry Canada licence-exempt RSS standard(s). Operation is subject to the following two conditions:

1. This device may not cause interference, and
2. This device must accept any interference, including interference that may cause undesired operation of the device.

This Class B digital apparatus complies with Canadian ICES-003.

Le présent appareil est conforme aux CNR d'Industrie Canada applicables aux appareils radio exempts de licence. L'exploitation est autorisée aux deux conditions suivantes :

1. L'appareil ne doit pas produire de brouillage, et
2. L'utilisateur de l'appareil doit accepter tout brouillage radioélectrique subi, même si le brouillage est susceptible d'en compromettre le Fonctionnement.

Cet appareil numérique de la classe B est conforme à la norme NMB-003 du Canada.

3 Introduction

3.1 About AIS

The marine Automatic Identification System (AIS) is a location and vessel information reporting system. It allows vessels equipped with AIS to automatically and dynamically share and regularly update their position, speed, course and other information such as vessel identity with similarly equipped vessels. Position is derived from GNSS and communication between vessels is by Very High Frequency (VHF) digital transmissions.

There are a number of types of AIS device as follows:

- **Class A transceivers.** These are designed to be fitted to commercial vessels such as cargo ships and large passenger vessels. Class A transceivers transmit at a higher VHF signal power than Class B transceivers and therefore can be received by more distant vessels, they also transmit more frequently. Class A transceivers are mandatory on all vessels over 300 gross tonnes on international voyages and certain types of passenger vessels under the SOLAS mandate.
- **Inland AIS stations.** Similar to Class A transceivers with additional features for use on Inland waterways.
- **Class B transceivers.** Similar to Class A transceivers in many ways, but are normally lower cost due to the less stringent performance requirements. Class B transceivers transmit at a lower power and at a lower reporting rate than Class A transceivers.
- **AIS base stations.** AIS base stations are used by Vessel Traffic Systems to monitor and control the transmissions of AIS transceivers.
- **Aids to Navigation (AtoN) transceivers.** AtoNs are transceivers mounted on buoys or other hazards to shipping which transmit details of their location to the surrounding vessels.
- **AIS receivers.** AIS receivers receive transmissions from Class A transceivers, Class B transceivers, AtoNs and AIS base stations but do not transmit any information about the vessel on which they are installed.

This product is an AIS Aids to Navigation (AtoN) transceiver.

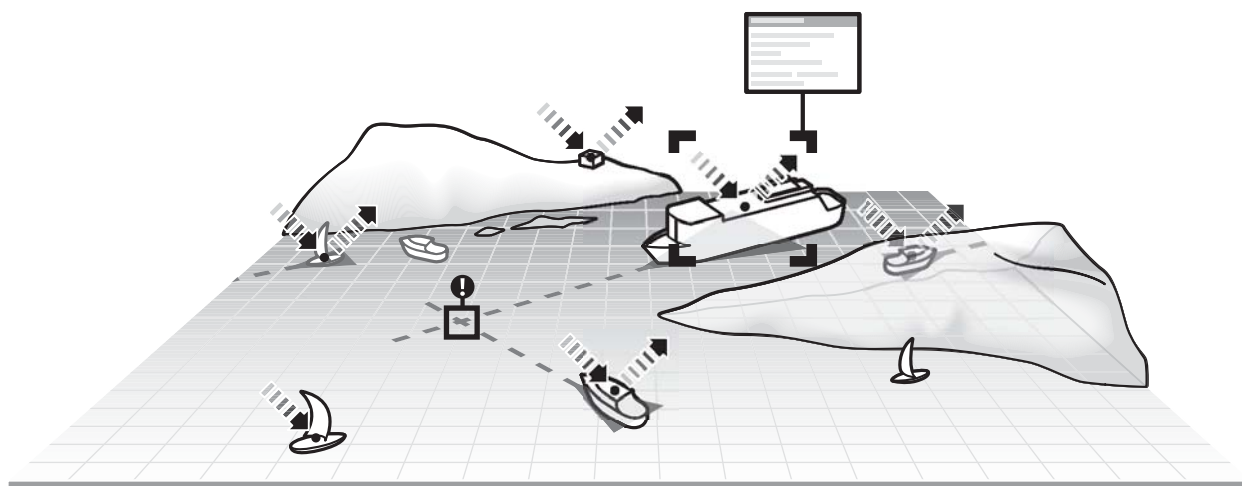


Figure 1 The AIS network

3.2 System overview

This AIS AtoN is a self contained device supporting both Type 1 (transmit only) and Type 3 (transmit and receive) operation. It is designed for installation in exposed locations on physical AtoN structures. The AIS AtoN can be supplied with an optional sensor interface platform which interfaces to sensors (such as weather instruments) and transmits measured data via AIS messages to surrounding vessels and shore stations.

The AIS AtoN has an exceptionally low power consumption making it suitable for installation on floating Aids to Navigation with solar charged power systems. The lowest power consumption is achieved when operating as a Type 1 AIS AtoN transmitting only position information. Further description of Type 1 and Type 3 operation is provided below.

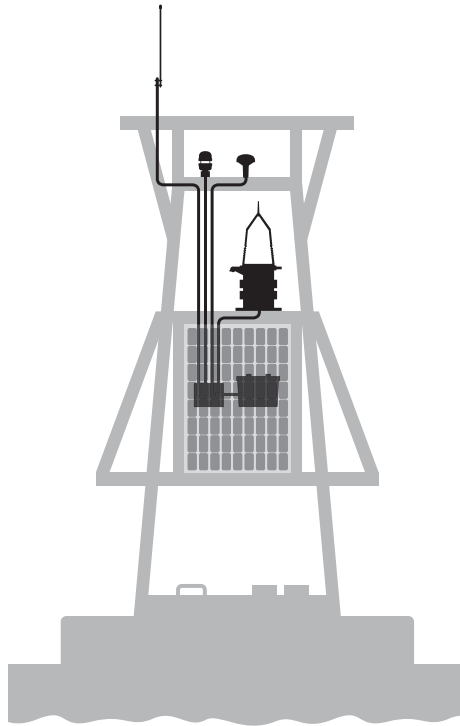


Figure 2 Typical AIS AtoN system

3.2.1 Type 1 AIS AtoN

A Type 1 AIS AtoN is a transmit only device using the FATDMA (Fixed Access Time Division Multiple Access) access scheme. This requires that the AIS AtoN is configured with fixed AIS time slots in which it will transmit AIS messages. Mobile AIS stations operating in the area where a Type 1 AIS AtoN is installed need to be aware of the time slots allocated to the AIS AtoN. The slots allocated to the AIS AtoN are 'reserved' by AIS Base Station transmissions covering the area in which the AIS AtoN is installed.

This mode of operation therefore requires that an AIS base station is operating in the same area as the AIS AtoN and is configured to make the necessary slot reservations.

3.2.2 Type 3 AIS AtoN

A Type 3 AIS AtoN has transmit and receive capability and can therefore use either the FATDMA or RATDMA (Random Access Time Division Multiple Access) access schemes. The RATDMA scheme allows the AIS AtoN to internally allocate slots for transmission of AIS messages without reservation from an AIS Base Station.

AIS receive capability also allows a Type 3 AIS AtoN to be configured and queried for status via AIS messages sent from a shore station (known as VDL configuration). An extension of VDL configuration is 'Chaining' where configuration and query commands are passed along a 'chain' of AIS AtoN stations to a distant station beyond the range of direct communication with a shore station.

3.3 Supported AIS messages

The transceiver supports the following AIS message types.

ITU-R M.1371-4 Message number	Description	Transmitted / Received by AtoN Transceiver	Application
6	Binary addressed message	Transmitted and received	The transceiver uses message 6 to send binary data (relating to connected sensors and systems) to a specific shore station. The transceiver can also receive addressed binary messages for the purpose of configuration and control.
7	Binary acknowledge message	Transmitted and received	This message is transmitted to acknowledge receipt of a binary message. The transceiver can also receive acknowledgements relating to its own addressed binary transmissions.
8	Binary broadcast message	Transmitted	The transceiver uses message 8 to broadcast binary data (relating to connected sensors and systems) to all other AIS stations in range.
12	Addressed safety related message	Transmitted	The transceiver can be configured to transmit an addressed safety related message to a specific shore station to alert the operator to an off position, vessel proximity or built in test failure condition.
13	Acknowledgement of received addressed safety related message	Received	The transceiver receives message 13 in acknowledgement of its transmission of message 12.
14	Safety related broadcast message	Transmitted	The transceiver can be configured to transmit a broadcast safety related message to all AIS stations in range to warn of an off position, vessel proximity or built in test failure condition.

ITU-R M.1371-4 Message number	Description	Transmitted / Received by AtoN Transceiver	Application
20	Data link management message	Received	When operating as a Type 3 transceiver slot reservations made by a shore station using message 20 will be observed by the transceiver.
21	Aids to Navigation report	Transmitted	This is the primary message transmitted by the transceiver. It contains the position, identification and status of the transceiver.
25	Single slot binary message	Transmitted and received	This message can be used for remote (over the air) configuration of the transceiver and configuration of a 'chain' of transceivers.

4 AIS AtoN product variants

The transceiver is available in four variants with different AIS functionality and facilities for connection of external equipment. This manual describes features and functions for all possible product configurations.

The configuration of the AIS AtoN as Type 1 or Type 3 is selected when ordering the device. The possible configurations are listed below.



A system of icons is used throughout this manual to highlight which AIS AtoN configurations a particular section, paragraph or illustration applies to. Sections without any icons apply to all configurations.

- Type 1 without sensor interfaces **T1**
- Type 1 with sensor interfaces **T1+S**
- Type 3 without sensor interfaces **T3**
- Type 3 with sensor interfaces **T3+S**

5 Installation

T1

T1+S

T3

T3+S

The AIS AtoN transceiver has been designed for ease of installation. The transceiver is self contained requiring only an external VHF antenna, GNSS antenna and power source for a basic installation. A typical system and connection diagram is provided in Figure 3.

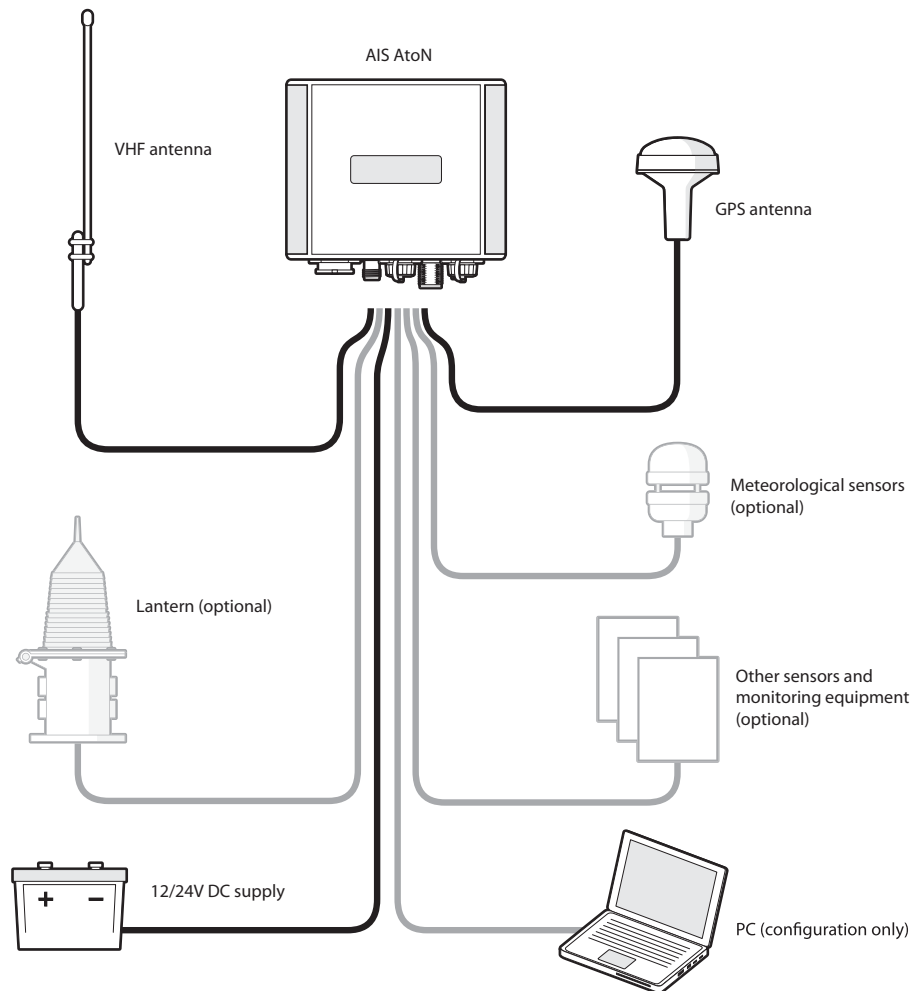


Figure 3 Typical AIS AtoN system connections

The main installation and commissioning steps are:

1. Mount the transceiver in a suitable location on the physical Aid to Navigation
2. Install a VHF antenna according to the manufacturers instructions
3. Install a GNSS antenna according to the manufacturer's instructions
4. Connect any sensor interfaces and lamp / RACON monitoring signals
5. Connect power to the transceiver
6. Configure and commission the transceiver via USB (note that this step can be carried out on shore prior to installation in a remote location)

5.1 What's in the box

Figure 4 shows the typical items included with the AIS AtoN transceiver. Note that the box contents vary with the specific product configuration. The following section gives a brief overview of each item. Please ensure all items are present and if any are missing please contact your supplier.

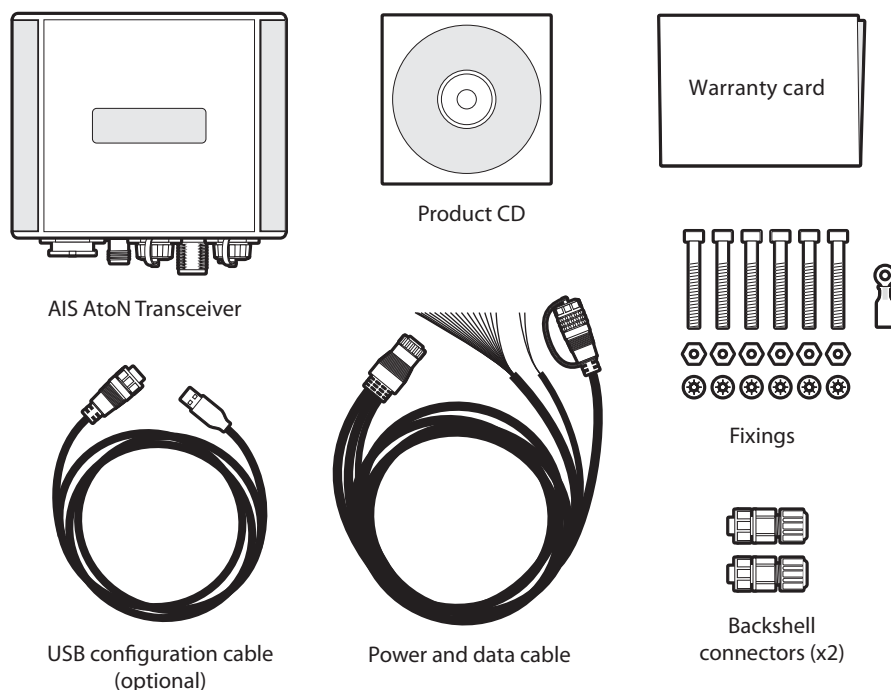


Figure 4 What's in the box - typical configuration

- **AIS AtoN transceiver**
The main transceiver
- **Fixings**
Fixing screws for mounting the transceiver to the physical AtoN structure.
- **Cables**
Cables for connection of power, USB and other interfaces as defined in section 5.4.
- **USB configuration cable - optional**
A 2m (6.6ft) long USB cable for connection to a PC when configuring the transceiver. The USB cable is not supplied as standard and must be ordered separately.
- **Sensor interface cables** **T1+S** **T3+S**
2m (6.6ft) long cables for interfacing the transceiver to external sensors and systems. These cables are optional items and supplied only with transceiver configurations that include a sensor interface. Depending on the supplied configuration a connector shell may be provided in place of the assembled cable.
- **Support tools CD**
CD containing the product manual, transceiver PC configuration and diagnostic tools.

5.2 Preparing for installation

In addition to the items provided with the transceiver the following items will be required to complete the installation.

5.2.1 Tools and wiring accessories

The following tools and wiring accessories are required for installation:

- 4mm hex key
- M5 spanner
- Soldering equipment for wiring of the connectors included
- Self amalgamating tape for use with the VHF and GPS connections

5.2.2 VHF antenna and cable

Connection of a suitable VHF antenna will be required for the AIS AtoN transceiver to operate. A robust marine band VHF antenna suited to the environment in which the AtoN will operate should be selected. The antenna cable should be terminated with a male N type connector. Any joins in the antenna cable should be made with co-axial connectors and sealed appropriately. It is recommended that RG-213 cable (or equivalent) is used to connect the VHF antenna. See section 5.6 for further details.

5.2.3 GNSS antenna and cable

GNSS Antenna and cable. A suitable GNSS antenna will be required for the AIS AtoN transceiver to operate. See section 5.7 for further details.

5.3 Mounting the transceiver **T1** **T1+S** **T3** **T3+S**

The transceiver can be mounted to a physical aid to navigation using fixing screws, washers and nuts. The screws are inserted through the four mounting holes located under the end trims of the enclosure.

Consideration should be given to cable routing and VHF and GNSS antenna location when selecting an installation location.

Overall dimensions for the transceiver are provided in Figure 24.

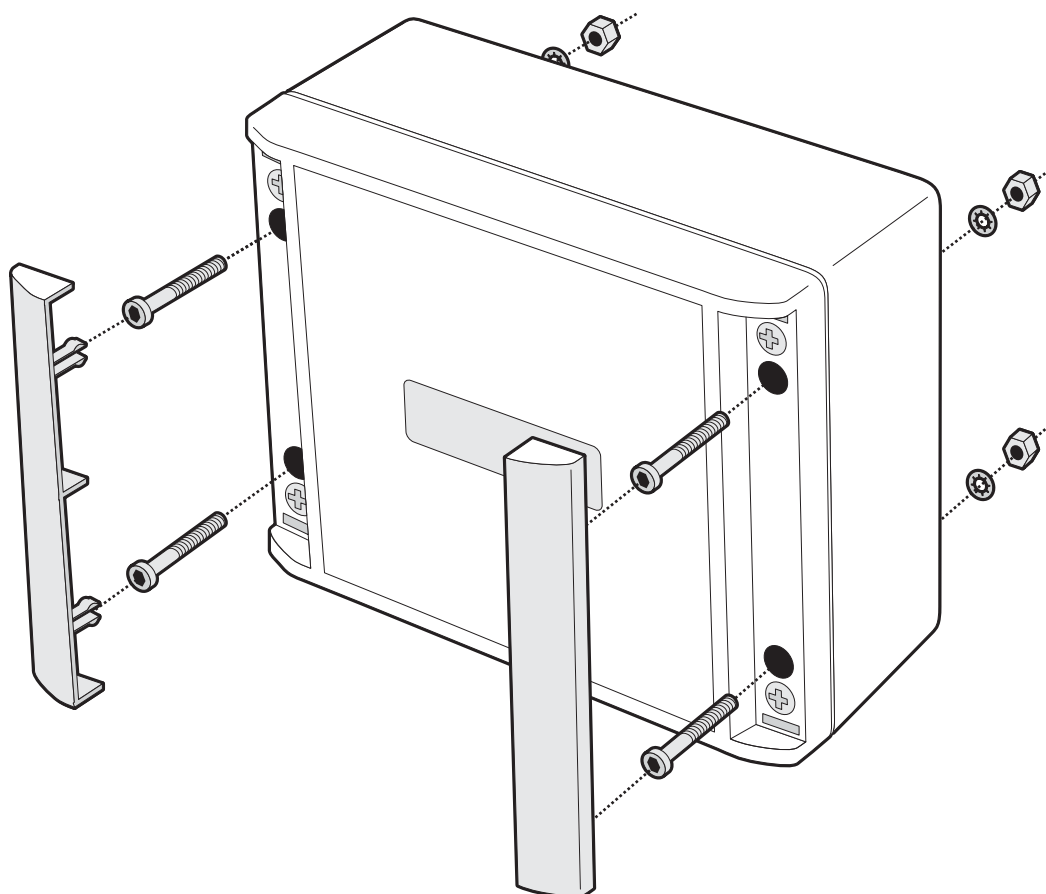


Figure 5 Mounting the transceiver

5.4 Transceiver connections **T1** **T1+S** **T3** **T3+S**



The supplied sealing caps must be fitted to any unused connections.

The function of each connector is identified in Figure 6. Note that the sensor interface connections are only functional in product configurations including sensor interfacing. The function and pin allocation for each connector is described in the following sections.

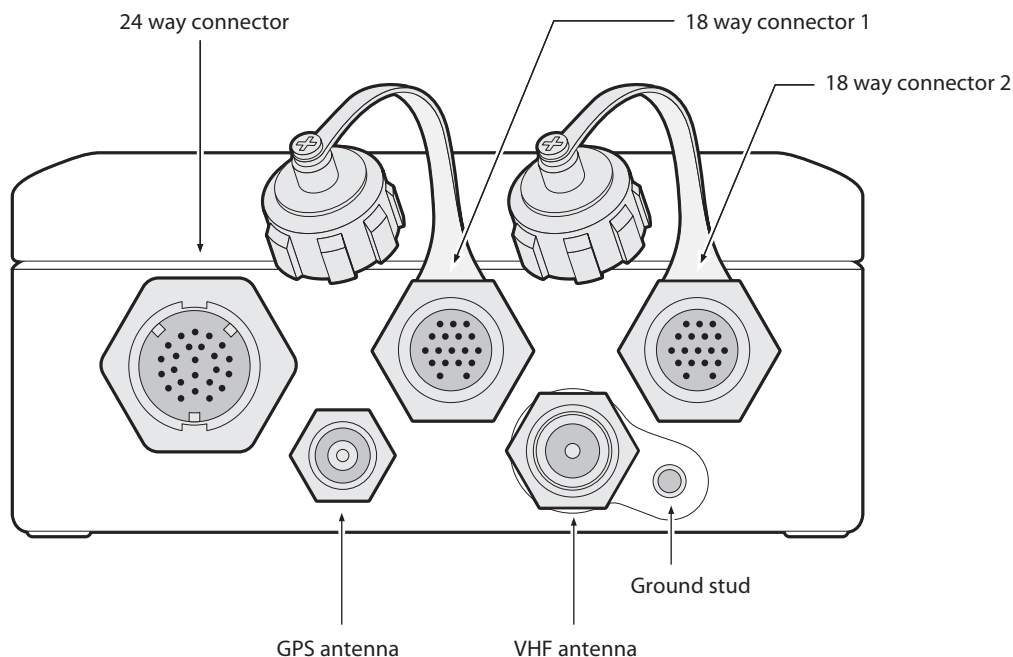


Figure 6 Transceiver connector locations

5.4.1 24 way interface connector **T1** **T1+S** **T3** **T3+S**

This connector provides power to the transceiver along with access to the USB port for configuration. It also provides access to the built in ISENSE loop. An accessory cable for connection to the 24 way connector is provided with the product.

5.4.2 Accessory cable

The accessory cable provided with the product separates into three cables: power, data and USB as shown in Figure 7. Table 1 provides the functions of each of the 24 connections.

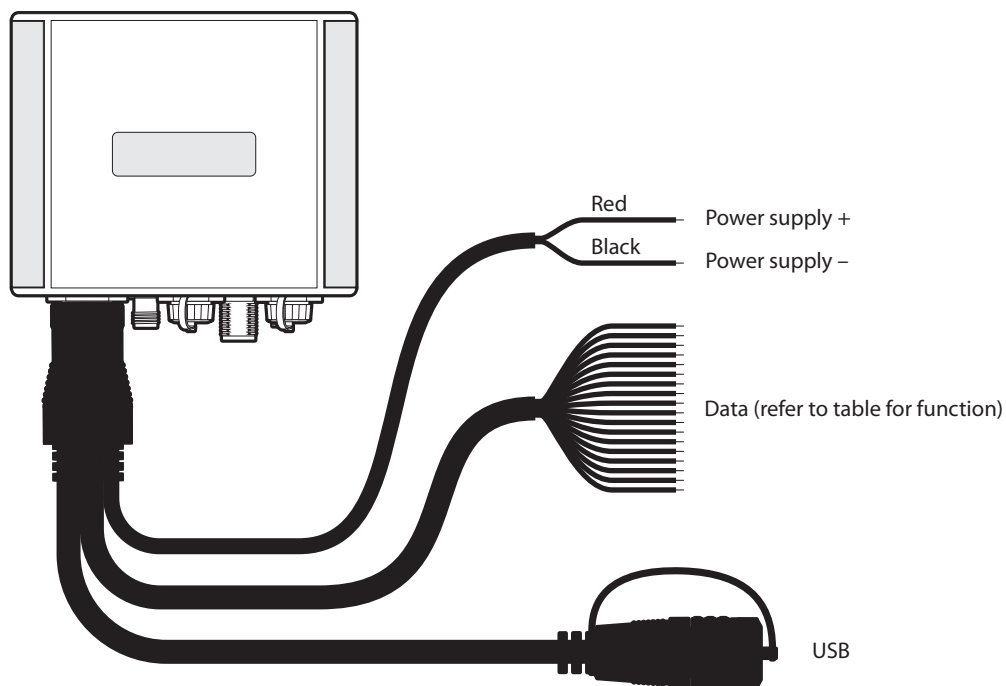


Figure 7 Accessory cable

Pin	Signal Name	Function and Notes	Variant	Conductor ID
1	VIN+	Transceiver power input connection (10 to 32VDC)	(T1) (T1+S) (T3) (T3+S)	Power: Red
2	VIN-	Transceiver power input return / 0V connection	(T1) (T1+S) (T3) (T3+S)	Power: Black
3	ISENSE + (5A)	Lamp current sense loop input (max 5A)	(T1+S) (T3+S)	Data: Red
4	ISENSE -	Lamp current sense loop return (max 5A)	(T1+S) (T3+S)	Data: Black
5	NMEA0183_TX1_A	Transceiver NMEA0183 TX A+ signal (RS422)	(T1) (T1+S) (T3) (T3+S)	Data: Brown
6	NMEA0183_RX1_A	Transceiver NMEA0183 RX A+ signal (RS422)	(T1) (T1+S) (T3) (T3+S)	Data: Orange
7	NMEA0183_TX1_B	Transceiver NMEA0183 TX B- signal (RS422)	(T1) (T1+S) (T3) (T3+S)	Data: Yellow
8	NMEA0183_RX1_B	Transceiver NMEA0183 RX B- signal (RS422)	(T1) (T1+S) (T3) (T3+S)	Data: Green
9	S_RS422_TX1_A	Sensor interface RS422 port TX A+ signal	(T1+S) (T3+S)	Data: Blue
10	S_RS422_RX1_A	Sensor interface RS422 port RX A+ signal	(T1+S) (T3+S)	Data: Purple
11	S_RS422_TX1_B	Sensor interface RS422 port TX B- signal	(T1+S) (T3+S)	Data: Grey

Pin	Signal Name	Function and Notes	Variant	Conductor ID
12	S_RS422_RX1_B	Sensor interface RS422 port RX B- signal	(T1+S) (T3+S)	Data: White
13	S_RS422_GND	Senor interface RS422 port ground	(T1+S) (T3+S)	Data: Pink
14	S_RS232_TX1	Sensor interface RS232 port 1 TX	(T1+S) (T3+S)	Data: Light-green
15	S_RS232_RX1	Sensor interface RS232 port 1 RX	(T1+S) (T3+S)	Data: Black/White
16	S_RS232_TX2	Sensor interface RS232 port 2 TX	(T1+S) (T3+S)	Data: Brown/White
17	S_RS232_RX2	Sensor interface RS232 port 2 RX	(T1+S) (T3+S)	Data: Red/White
18	SDI_DATA	SDI Bus data signal	(T1+S) (T3+S)	Data: Orange/White
19	S_DIG_IO_4	Non-isolated digital IO 4	(T1+S) (T3+S)	Data: Green/White
20	GND	Signal ground		Data: Blue/White
21	USB DM	USB connection is via a Type A connector fitted to the connector cable.	(T1) (T1+S) (T3) (T3+S)	
22	USB DP			
23	USB VBUS			
24	USB Ground			

Table 1 Pin allocation for the 24 way connector



Power connections should be kept as short as possible in order to minimise voltage drop. The cable used to connect power to the connector pins A and C should have conductors with a cross sectional area of 0.75mm².



The connections labeled GND are signal ground connections only and should not be connected to the incoming power supply VIN- (0V) rail. Doing so will bypass internal power supply protection and could result in permanent damage to the transceiver.

5.4.3 18 way connectors **T1+S** **T3+S**

The 18 way connectors provide access to a range of digital IO and ADCs. Two mating connectors are included with the product and should be wired as required according to the pin numbers and functions shown in Table 2, and as shown in Figure 8.

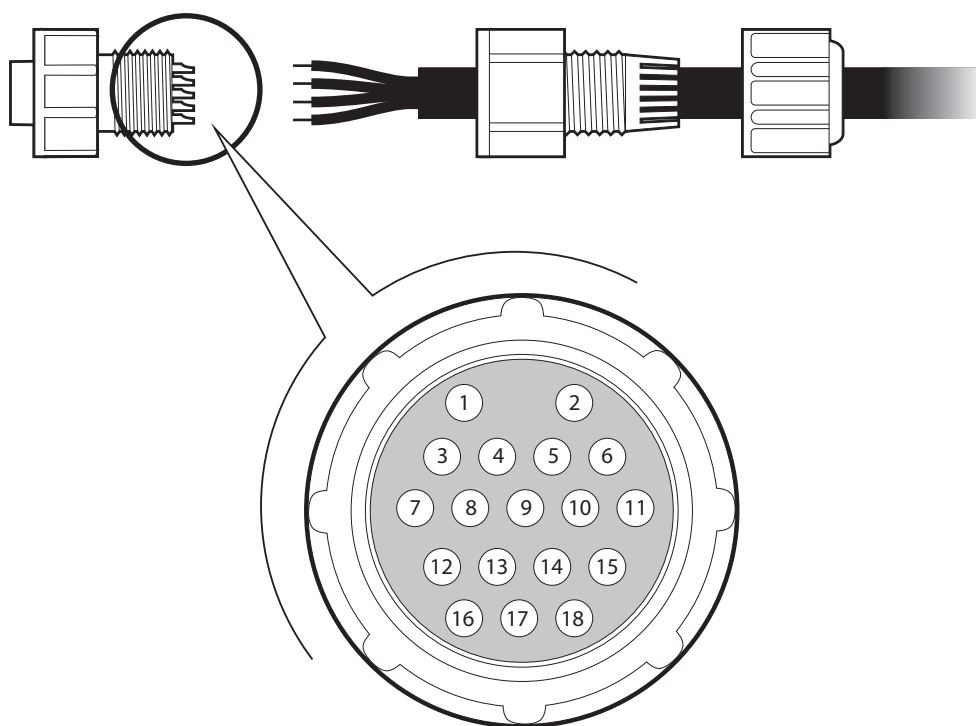


Figure 8 Pin numbering for 18 way connectors 1 and 2

Pin	Signal name	Function and notes	Variant
1	ISO_DI1+	Isolated digital input 1 positive	(T1+S) (T3+S)
2	ISO_DI1-	Isolated digital input 1 negative	(T1+S) (T3+S)
3	ISO_DI2+	Isolated digital input 2 positive	(T1+S) (T3+S)
4	ISO_DI2-	Isolated digital input 2 negative	(T1+S) (T3+S)
5	ISO_DI_3+	Isolated digital input 3 positive	(T1+S) (T3+S)
6	ISO_DI_3--	Isolated digital input 3 negative	(T1+S) (T3+S)
7	ISO_DI_4+	Isolated digital input 4 positive	(T1+S) (T3+S)
8	ISO_DI_4-	Isolated digital input 4 negative	(T1+S) (T3+S)
9	SO_DI_5+	Isolated digital input 5 positive	(T1+S) (T3+S)
10	SO_DI_5-	Isolated digital input 5 negative	(T1+S) (T3+S)
11	S_DIG_IO_1	Non-isolated digital IO 1	(T1+S) (T3+S)
12	S_DIG_IO_2	Non-isolated digital IO 3	(T1+S) (T3+S)
13	S_DIG_IO_3	Non-isolated digital IO 2	(T1+S) (T3+S)
14	GND	Signal ground	(T1+S) (T3+S)
15	ISO_AN_1+	Isolated analogue input 1 positive	(T1+S) (T3+S)
16	ISO_AN_1-	Isolated analogue input 1 negative	(T1+S) (T3+S)
17	ISO_AN_2+	Isolated analogue input 2 positive	(T1+S) (T3+S)
18	ISO_AN_2-	Isolated analogue input 2 negative	(T1+S) (T3+S)

Table 2 Pin allocation for 18 way connector 1

Pin	Signal Name	Function and Notes	Variant
1	USER_PWR	3.3V DC output to supply interface circuits. Maximum output current 200mA.	(T1) (T1+S) (T3) (T3+S)
2	RELAY_DR_1	Relay drive output 1	(T1+S) (T3+S)
3	RELAY_DR_2	Relay drive output 2	(T1+S) (T3+S)
4	GND	Signal ground	
5	USER_IO_0	Transceiver user IO signal 0 (Light on/off input)	(T1) (T1+S) (T3) (T3+S)
6	USER_IO_1	Transceiver user IO signal 1 (Light health input)	(T1) (T1+S) (T3) (T3+S)
7	USER_IO_2	Transceiver user IO signal 2 (RACON health input)	(T1) (T1+S) (T3) (T3+S)
8	USER_IO_3	Transceiver user IO signal 3	(T1) (T1+S) (T3) (T3+S)
9	USER_IO_4	Transceiver user IO signal 4 (wake-up out)	(T1) (T1+S) (T3) (T3+S)
10	USER_WKUP	External wakeup input**	(T1) (T1+S) (T3) (T3+S)
11	GND	Signal ground	
12	EXT_WAKEUP	Sensor external wake up input	(T1+S) (T3+S)
13	AN_1+	Non-isolated analogue input 1 positive connection	(T1+S) (T3+S)
14	AN_1-	Non-isolated analogue input 1 negative connection	(T1+S) (T3+S)
15	AN_2+	Non-isolated analogue input 2 positive connection	(T1+S) (T3+S)
16	AN_2-	Non-isolated analogue input 2 negative connection	(T1+S) (T3+S)
17	AN_3+	Non-isolated analogue input 3 positive connection	(T1+S) (T3+S)
18	AN_3-	Non-isolated analogue input 3 negative connection	(T1+S) (T3+S)

Table 3 Pin Allocation for 18 way connector 2

5.4.4 VHF antenna connector

The VHF antenna connector is a female 'N' type co-axial connector. The antenna ground is galvanically isolated from the AIS AtoN system ground. The connector and mating half must be sealed with self amalgamating tape once mated. A lightning protector may be installed in line with the VHF antenna connector. The recommended lightning protector is Huber+Suhner part number 3401.17.C with gas discharge tube 9071.99.0547. See section 5.6 for further information.

5.4.5 GNSS antenna connector

The GNSS antenna connector is a female 'TNC' co-axial connector. The connector and mating half must be sealed with self amalgamating tape once mated.

Refer to section 5.7 for further detail on the selection and installation of an external GNSS antenna. If the External GNSS antenna connector is not used it must be protected with the supplied blanking cap.

5.4.6 Earth connection stud

The earth connection stud is an M4 stud connected to the VHF antenna ground. This point should be connected to a common grounding point for lightning protection.

5.5 Connecting power **T1** **T1+S** **T3** **T3+S**

The transceiver requires a nominal 12VDC or 24VDC supply and will operate between 10V and 32VDC. The peak current drawn when operating from 12VDC is 3A and when operating from 24VDC is 2.5A. Power should be connected using the supplied interface connector and cable. It is recommended that 5A rated fuses are installed in line with the power supply positive and negative connections.

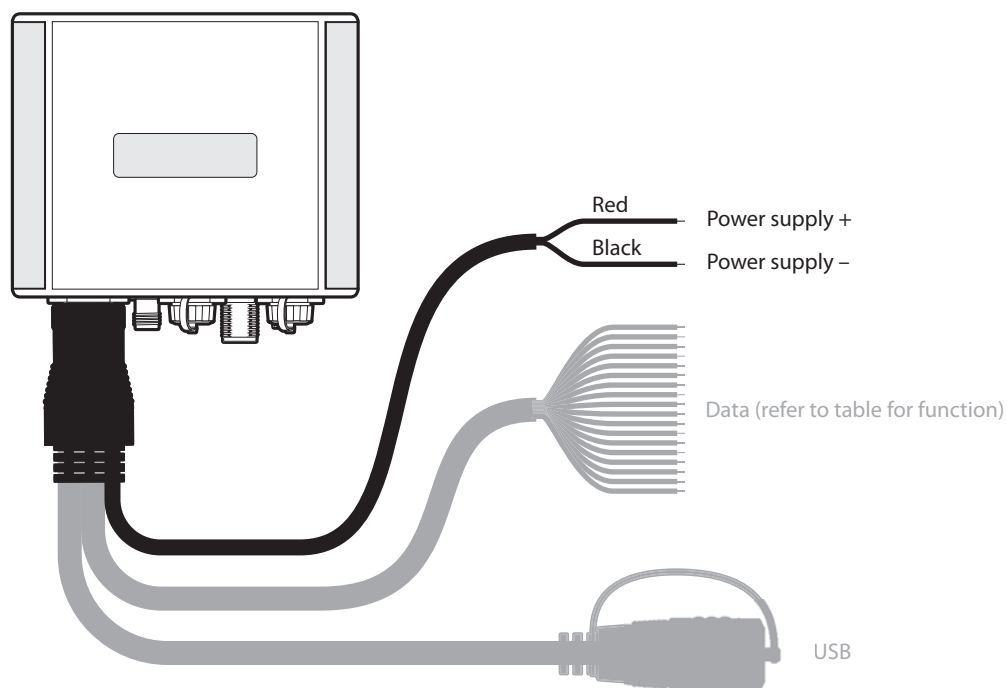


Figure 9 Connecting power

Overall power consumption is dependent on the configuration of the transceiver messaging and sensor interface. Minimum power consumption figures are provided in section 11.

5.6 Installing and connecting the VHF antenna T1 T1+S T3 T3+S



If the transceiver is installed in a location where a risk of lightning strike exists please install an appropriate lightning protector in line with the VHF antenna and connect the transceiver ground stud to an earthed structure.



The performance and reliability of the VHF antenna is essential to correct operation of the transceiver. Ensure that a high quality antenna suitable for use in harsh environmental conditions is selected. Ensure all co-axial connections are well made and watertight.



The VHF antenna should be installed according to the manufacturer's instructions.



The VHF antenna must be installed with at least 1 metre horizontal separation from any other VHF antenna mounted at the same level.

The VHF antenna should have the following specification:

- Centre frequency 159MHz
- VSWR < 2.0
- Impedance 50 Ohms
- Power handling 12.5 Watts
- Gain 3dBi or 6dBi

It is recommended that high quality RG213 or RG214 co-axial cable is used to connect the VHF antenna to the transceiver. The antenna cable should be as short as possible and no more than 30 metres (100 feet) in length.

When selecting the installation location for the VHF antenna:

- Install the antenna as high as possible on the physical aid to navigation
- Keep the antenna away from any large vertical metallic structures.
- Install the antenna with at least 1 metre horizontal separation from any other VHF antenna mounted at the same level.

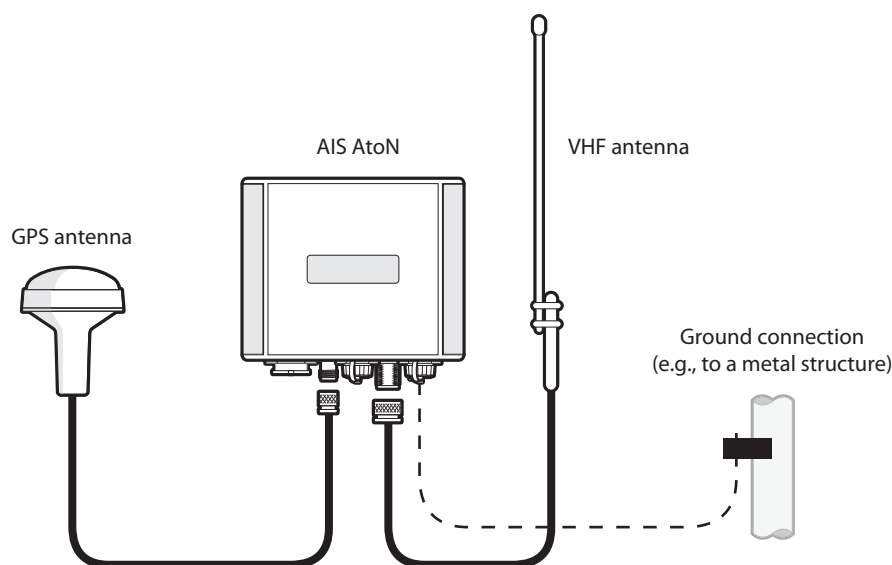


Figure 10 VHF antenna, GPS antenna and earth stud connection

5.7 Installing and connecting a GNSS antenna **T1** **T1+S** **T3** **T3+S**



The performance and reliability of the GNSS antenna is essential to correct operation of the transceiver. Ensure that a high quality antenna suitable for use in harsh environmental conditions is selected. Ensure all co-axial connections are well made and watertight.



The GNSS antenna should be installed according to the manufacturer's instructions.

The installation requires an external GNSS antenna specified as follows:

- Centre frequency 1575.42MHz for GPS operation.
- Active antenna with overall gain of at least 20dB
- Bias voltage 3.3V
- Impedance 50 Ohms
- VSWR <2.0

When installing the transceiver GNSS antenna:

- Make sure the antenna has a clear view of the sky with no overhead obstructions
- Position the antenna as far as possible from any VHF or other transmitting antennas
- Position the antenna as high as possible on the physical aid to navigation.

It is recommended that high quality RG213 or RG214 co-axial cable is used to connect the GNSS antenna to the transceiver. The antenna cable should be as short as possible and no more than 10 metres (30 feet) in length.

5.8 Installing the earth connection

It is recommended that the enclosure is connected to an external earthing point. The ground stud shown in Figure 6 should be used for this purpose along with the supplied ring terminal, washer and nut.

6 Connecting external sensors and systems

The transceiver can be interfaced to external sensors and systems for the transmission of sensor data via the AIS network. Typically metrological and hydrological sensors are interfaced to the transceiver so that local conditions can be shared with other AIS users.

The transceiver is available with and without extended sensor interfaces as described in section 4. Section 6.1 describes the interfaces available without the extended sensor interface while section 6.2 describes the interfaces available with the extended sensor interface.

6.1 Basic transceiver interfacing T1 T1+S T3 T3+S

This section describes the interfaces available without the extended sensor interface. In this version of the transceiver only the power and transceiver interface connector is used for connection of external equipment. The interfaces available are:

- Five user configurable input/output signals
- A bi-directional NMEA0183 port

The transceiver also has the ability to measure the incoming power supply voltage. This measurement is used by the transceivers BIIT (Built In Integrity Test) routines and can be used to trigger changes to the transceiver health flag in AIS message #21 (the AtoN position report) or additional AIS alert messages if so configured.

6.1.1 Basic user configurable input / output signals

The basic user I/O signals are 3.3V logic level signals and configurable as inputs or outputs. These connections can be configured as inputs and mapped to the AtoN status bits in AIS message #21 (the AtoN position report). The default mapping of the signals is described in section 6.1.2. These connections are available via 18 way connector 2 described in section 5.4.3.

Configuration of the source and other settings for AtoN status information is described in section 6.1.3.

6.1.2 Basic Lamp and RACON status interfacing

Additional circuitry may be required to interface the lamp or RACON status outputs to the transceiver. Please contact your supplier with details of the lamp or RACON for further information.



Voltages above 3.3V must not be connected to these inputs. An external circuit and isolation may be required to interface external equipment. Isolated status inputs are available with the extended sensor interface and are described in section 6.2.

Figure 11 below shows the reference circuit for the USER_IO pins

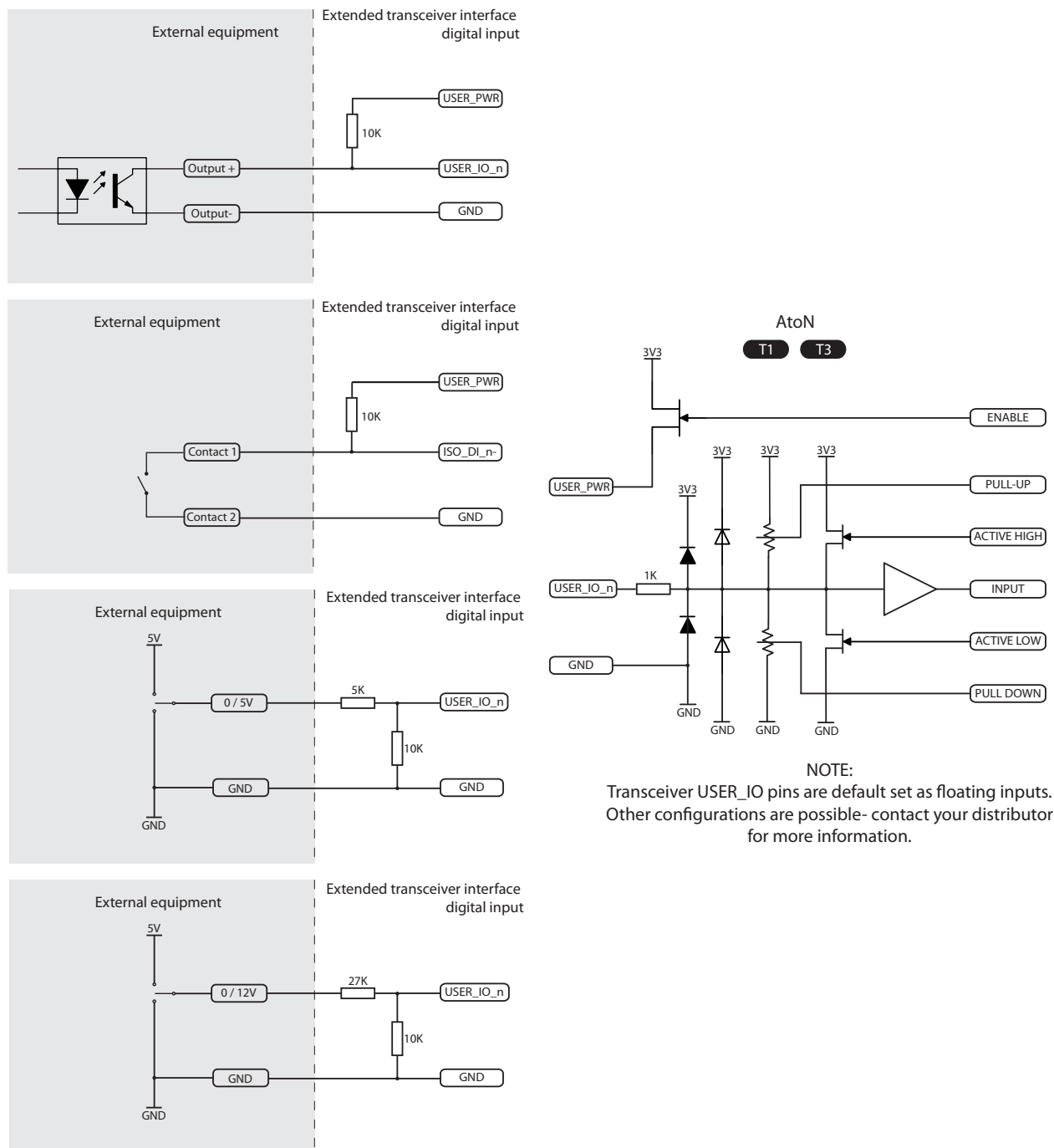


Figure 11 USER_IO pins reference circuit

The encoding of the connected equipment status to the lamp and RACON status is defined below.

- Light on off - User IO 0 (logic high input = light on)
- Light health - User IO 1 (logic high input = light error)
- Racon Health - User IO 2 (logic high input RACON operational)

When appropriately configured the status of the lamp and RACON signals will be sampled prior to each AtoN position report transmission and the status encoded in the message. When the Status bit source is sent to Sensor the input bits are polled once a minute and are not linked to the message #21 broadcast schedule.

6.1.3 AtoN Status source and configuration

AIS AtoN position report messages (AIS message #21) contain status bits describing the status of a connected lamp and RACON. The general health of the transceiver is also provided as either 'good health' or alarm. The transceiver can be configured to obtain status information from one of three sources:

- Directly from the transceiver basic I/O signals described in 6.1.1
- From the extended sensor interface isolated digital inputs described in 6.2.4
- By input of an ACE (Extended General AtoN Station configuration command) sentence to the transceiver's NMEA0183 port. The ACE sentence is described in section 10.2.2. This sentence can be used to supply the status bits for transmission rather than sourcing from the hardware inputs.

The source of the status information is configured using either proAtoN (see section 7). The following settings must also be configured using proAtoN:

- Lamp fitted / not fitted
- Racon fitted / not fitted
- Racon monitored / not monitored

Note that the AIS AtoN 'health' bit is generated internally by the transceiver. However, if the ACE sentence is configured as the source for status information then the AIS AtoN 'health' bit is the combination of the internal transceiver health and the ACE sentence health bit. In this configuration if either the internal transceiver health or the external health status provided by the ACE sentence is set to '1' (alarm) then the status will be transmitted as alarm.

6.1.4 NMEA0183 port

The bi-directional NMEA port is available via the 24 way connector described in section 5.4.1. This port accepts and outputs NMEA0183/IEC61162-1 sentences for configuration of the transceiver and communication of binary message payload data (see section 7) to the transceiver for transmission in AIS messages. Whilst the transceiver is awake own position reports are also output to this port (as AIVDO messages) and in the case of a Type 3 transceiver remote vessel reports (as AIVDM messages) are also output.

The electrical and interface specification for this port is as follows:

- Four wire NMEA0183 / IEC61162-1/2 port (RS422 levels)
- Baud rate 38,400baud
- Isolated receiver circuitry, non-isolated transmitter circuitry

Port signal name	Function
NMEA0183_TX1_A	Transceiver NMEA0183 port 1 TX A+ signal
NMEA0183_TX1_B	Transceiver NMEA0183 port 1 TX B- signal
NMEA0183_RX1_B	Transceiver NMEA0183 port 1 RX B- signal
NMEA0183_RX1_A	Transceiver NMEA0183 port 1 RX A+ signal

6.2 Advanced transceiver interfacing T1+S T3+S

This section describes the connections available with the extended sensor interface. The connections available in addition to those described in section 6.1 are:

- Two fully isolated analogue inputs
- Three non-isolated analogue inputs
- A lamp current sense loop
- Five isolated digital inputs
- Five non-isolated digital inputs / outputs
- A fully isolated RS422 / NMEA0183 port

- Two RS232 ports
- An SDI-12 serial bus interface (one RS232 port is unavailable if this interface is used)
- Two relay drive outputs

The following sections describe the hardware specification and interface to these inputs. The function of the sensor interface (in terms of translation of sensor data to AIS messages) is determined by the software configuration of the AIS AtoN. The default configuration and supported sensors are described in section 8 of this document. For alternate configurations please refer to the additional documentation supplied with the product or contact your supplier.

6.2.1 Isolated analogue inputs

The extended sensor interface includes two isolated analogue inputs. These inputs are available at "18 way connector 2" described in section Table 2. The electrical and measurement specification of these inputs is as follows:

- Differential input range 0 to 36V
- Impedance 620K Ω
- 16 bit resolution

The voltage to be measured should be applied across the differential positive and negative inputs.

6.2.2 Non-isolated analogue inputs

The extended sensor interface includes three non-isolated analogue inputs. These inputs are available via 18 way connector 2 described in section 5.4.3. The electrical and measurement specification for these inputs is as follows:

- Differential input range $\pm 35V$
- Impedance 220K Ω
- 12 bit resolution

The voltage to be measured should be applied across the differential positive and negative inputs.

6.2.3 Lamp current sense loop

The extended sensor interface includes a lamp current sense loop. This facility is intended for health monitoring of a lamp on the physical aid to navigation. Connections for the lamp current sense loop are available via the 24 way connector described in section 5.4.3. The specification of the current sense loop is as follows:

- Maximum current 5A
- Measurement of currents up to 0.5A
- 12 bit resolution

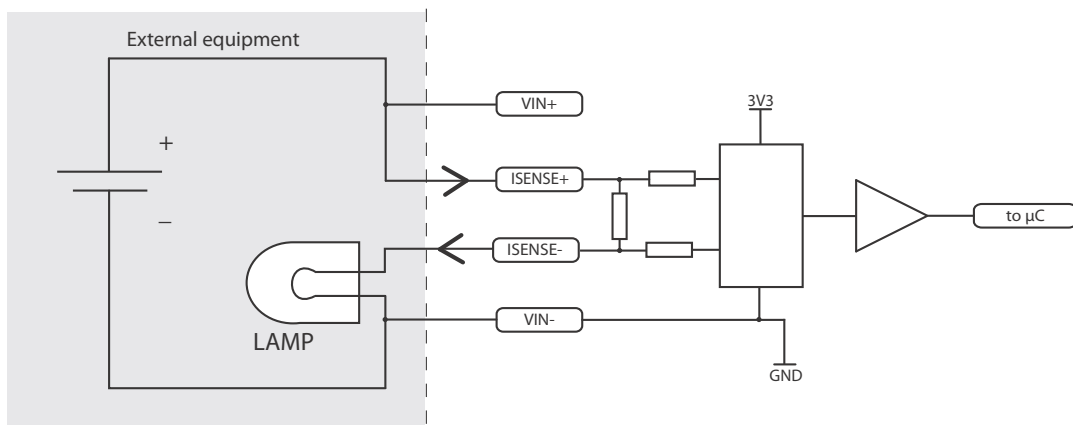


Figure 12 Lamp current sense loop circuit

6.2.4 Isolated digital inputs

The extended sensor interface includes five isolated digital inputs. These inputs are intended for use with status outputs from external equipment such as lamps, RACONs and power supply monitoring systems. The first two inputs are available at the "Sensor Interface Connector X" described in section 5.4.3 and the remaining three inputs at the "Sensor Interface Connector Y" described in section Table 2. The specification for these inputs is as follows:

- Maximum input voltage $\pm 15V$
- Input impedance $1K\Omega$
- Sensitivity $2.5V$

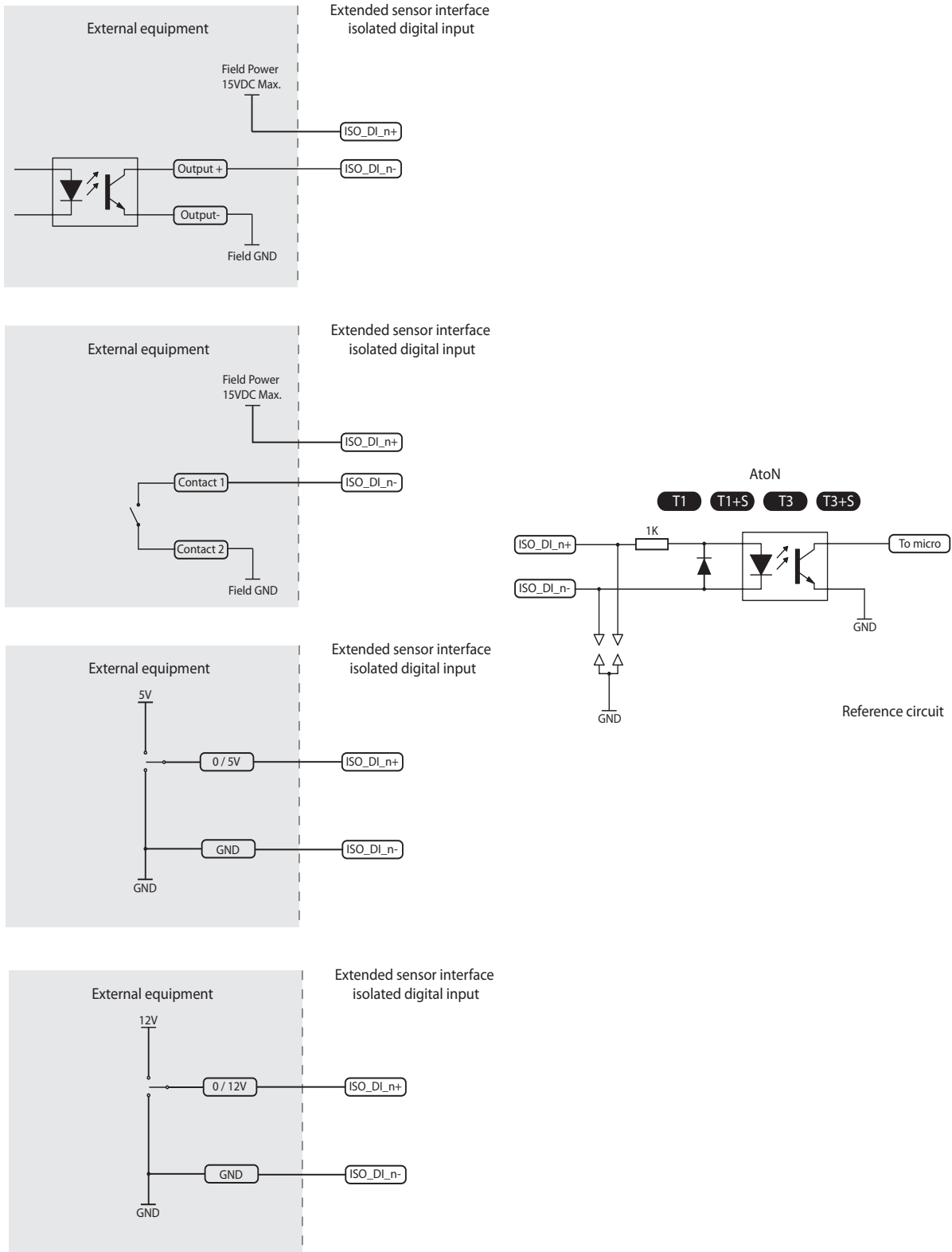


Figure 13 Isolated digital input reference circuit

6.2.5 Non-isolated digital inputs/outputs

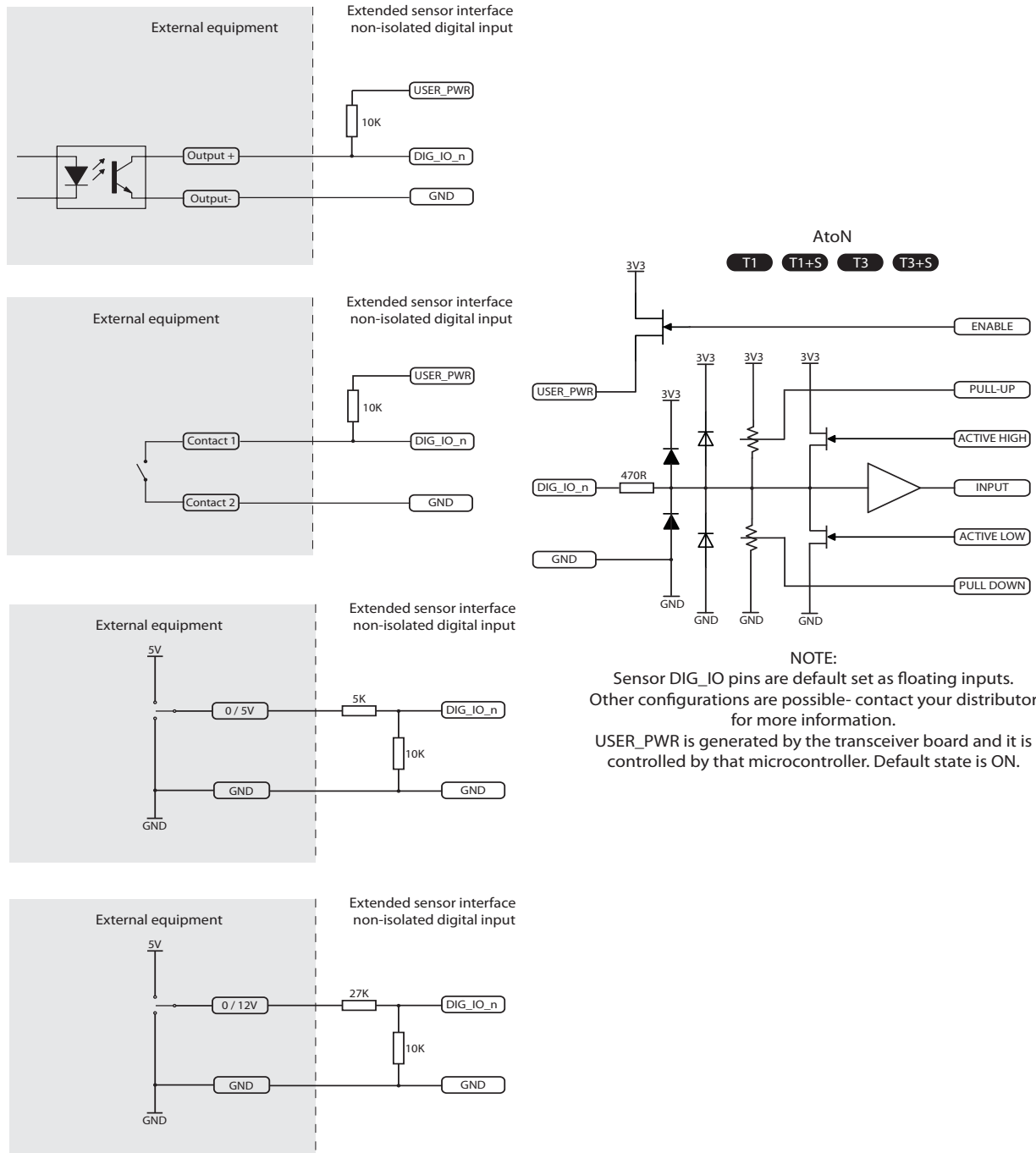


Figure 14 Non Isolated digital input reference circuit

The extended sensor interface includes five non-isolated logic level digital interfaces. When configured as inputs the signal level must not exceed 3.3VDC referenced to the transceiver signal ground. Digital IOs 1 to 3 are available via 18 way connector 1, detailed in section 5.4.3. Digital IO 4 is available via the 24 way connector. Note that the Digital IO 5 acts as the external sensor wakeup pin which can act to 'wake' the sensor interface system from sleep if necessary is located on the 24 way connector detailed in section 5.4.1.

6.2.6 Isolated RS422 / NMEA0183 port

The extended sensor interface provides a fully isolated NMEA0183 (RS422 level) serial interface for connection of external equipment. Connections for the isolated NMEA0183 port are available at the 24 way connector described in section 5.4.1.

The port operates at 38,400baud by default. The data types accepted are determined by the configuration of the sensor interface.

6.2.7 RS232 ports

The extended sensor interface provides two non-isolated RS232 interfaces for connection of external equipment. These ports are available via the 24 way connector described in section 5.4.1.

The port operates at 38,400baud by default. The data types accepted are determined by the configuration of the sensor interface.

RS232 port 2 shares hardware with the SDI-12 interface described in section 6.2.8 and is not available if the SDI-12 interface enabled by configuration.

6.2.8 SDI-12 interface

The extended sensor interface provides an SDI-12 for interface to external sensors supporting this bus. The extended sensor interface operates as an SDI-12 bus master. The electrical interface consists of three connections:

- A serial data line
- A ground line
- A 12-volt line (used to power connected sensors)

For further information on the SDI-12 interface please refer to the specification available at <http://www.sdi-12.org/>. Note that the 12V supply line is not provided by the sensor interface.

6.2.9 Relay drive outputs

The extended sensor interface provides two open drain relay drive outputs that default to the normally open state. The outputs are capable of switching 100mA at 12VDC or 50mA at 24VDC; a circuit diagram of the output driver is provided in Figure 15.

Note that use of the relay drive outputs is restricted to configurations where the extended sensor interface is permanently powered on.

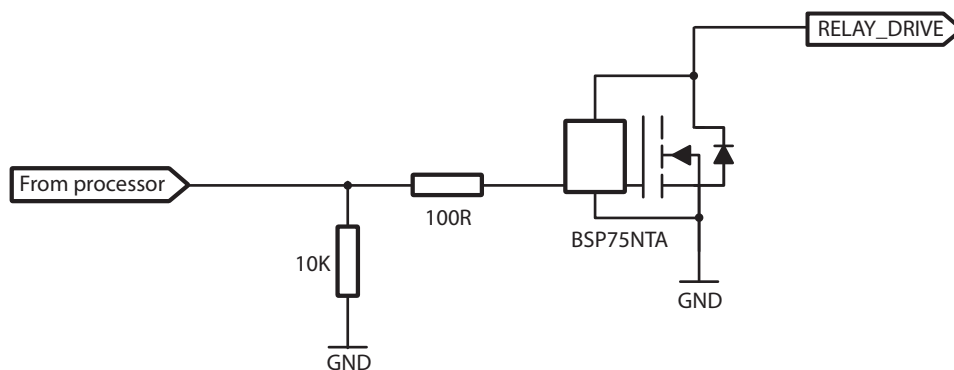


Figure 15 Relay drive output reference circuit

6.2.10 Input voltage monitor

The extended sensor interface has the facility to measure the incoming power supply voltage. This can be used to provide a measurement of the charge state of a battery supply to the transceiver. The voltage measured can be included in transmitted AIS measurements if so configured. No additional connections are required in order to make use of this facility.

7 Configuration using proAtoN T1 T1+S T3 T3+S

The proAtoN PC application is supplied on the CD packaged with the transceiver. The application provides features for configuration of the transceiver and confirming correct operation before deployment. The main features of the application are:

- Configuration of essential transceiver parameters such as MMSI, name and dimensions
- Configuration of reporting schedules
- Configuration of virtual and/or synthetic AtoN reporting schedules
- Configuration of other messaging features
- GNSS diagnostics
- System diagnostics and alarm display
- Configuration of the source for external equipment status information

Carbon units support VDL configuration and chaining. For further information contact your distributor.

7.1 proAtoN Installation

proAtoN should be installed from the CD supplied with the transceiver. The steps to complete the installation are as follows:

1. Insert the CD into your PC
2. Navigate to the *proAtoN* folder on the CD
3. Double click the 'setup.exe' item to start the installation process
4. Follow on screen instructions to complete the installation

Following successful installation the application can be launched from the proAtoN folder in the Windows start menu.

USB device drivers for the transceiver are installed automatically during installation of proAtoN.

7.2 Application layout

The basic layout of the proAtoN application is provided in Figure 16.

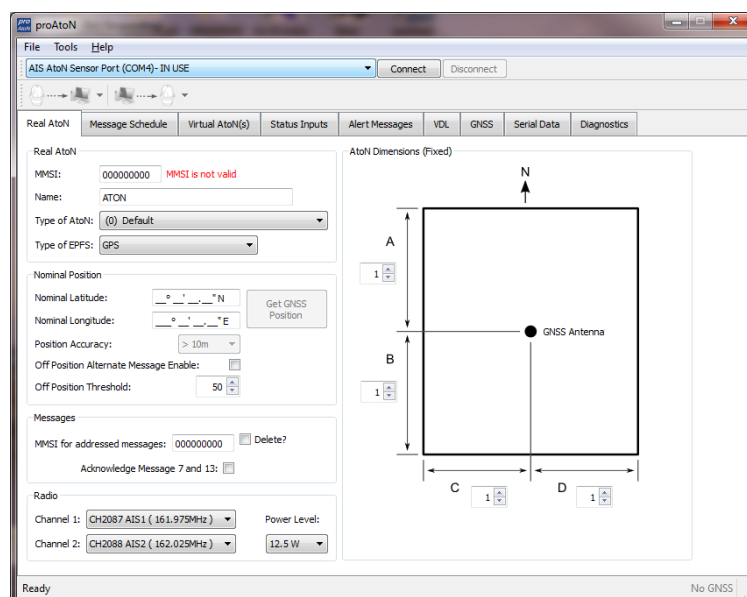


Figure 16 proAtoN application layout

COM Port selection

When connected via USB the COM port associated with the transceiver will be listed in the selection drop down. To connect to the transceiver select the 'AIS AtoN Port' option from the drop down and click the 'Connect' button.

Read / Write configuration

Clicking the left hand button will transfer current configuration information from the transceiver to proAtoN.

Clicking the right hand button will configure the transceiver with the information currently displayed in proAtoN.

It is possible to select transfer of configuration information relating only to the currently selected tab, or to all tabs by clicking the drop down arrow to the right of each button. The default operation for each button is to read or write data relating to the selected tab only. It is highly recommended that prior to deploying the AtoN the "Send all Configuration" option is used on the write button.

Configuration tabs

The configuration and status of the transceiver is displayed through a number of tabs.

- Real AtoN tab
Configuration of AtoN MMSI, name, type, dimensions, position and radio parameters.
- Message schedule tab
Configuration of FATDMA or RATDMA message schedules.
- Virtual AtoN tab
Configuration of virtual and/or synthetic AtoN transmissions.
- Status input tab
Configuration of the source for AtoN status information
- Alert messages tab
Configuration of non-periodic messages (e.g., vessel proximity alert messages).
- GNSS
Displays signal strength and status information for the transceiver GNSS receiver.
- Serial data
Displays raw IEC61162 (NMEA0183) data output from the transceiver.
- Diagnostics
Displays software version information, alarms and other key status information.

When connected to a transceiver a synchronisation status icon is displayed alongside the title of each tab. This icon indicates the current synchronisation status of the information displayed in that tab with the internal configuration of the transceiver. The synchronisation status icons are shown in Figure 17.

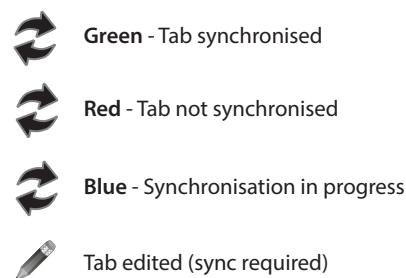


Figure 17 proAtoN tab synchronisation icons

Synchronisation is achieved by either writing the configuration displayed in proAtoN to the transceiver (click the write configuration button), or reading the current configuration from the transceiver for display in proAtoN (click the read configuration button).

Status bar

The status bar displays the current connection status of the application (bottom left) and the current GNSS time (if available, bottom right).

7.3 Transceiver configuration

The following sections describe the configuration options available and their effect on the behavior of the transceiver. Configuration of an AIS AtoN transceiver requires knowledge of the local AIS environment and may require interaction with shore infrastructure. Familiarity with the current IALA guidelines on the use of AIS Aids to Navigation (IALA A-126) is assumed.

7.3.1 Configuration of 'Real' AtoN parameters

The following parameters associated with the 'real' AIS AtoN transceiver should be configured via the 'Real AtoN' tab:

- **MMSI**

The MMSI number associated with the 'real' AtoN. Typically the MMSI number for a 'real' AtoN station follows the format 99MID1XXX where MID is the appropriate national MID and XXX is a number unique to this station.

- **Name**

The name of the AtoN station as broadcast to other AIS users. Up to 34 characters are available for the name.

- **Type of AtoN**

Select from a list of possible types of AtoN. The types are as defined by IALA in IALA A-126.

- **Type of EPFS**

Select the type of EPFS (Electronic Position Fixing System) used by the transceiver. Note this selection does not affect the hardware configuration, only the contents of the 'Type of EPFS' field in transmitted AtoN position reports. The transceiver is equipped with a GPS module by default. Alternatively for a fixed or shore based transceiver a surveyed position type can be selected. Note that when the surveyed position is selected the surveyed position is broadcast to other AIS users and GNSS position information is ignored.

- **Nominal position**

Enter the nominal or charted position of the AtoN. This is the position transmitted to other AIS users for a fixed AtoN when the 'Surveyed' EPFS type is selected. For all other configurations this position is used to perform 'off position' calculations only; the actual GNSS position is broadcast to other users.

- The application can average the current GNSS position over 5 minutes and use this value for the nominal position. Click the 'Get GNSS position' button to the right of the latitude and longitude fields to begin this process.
- The position accuracy can only be entered when the type of EPFS is set to 'Surveyed'. The accuracy should be set in accordance with the accuracy of the surveyed position.

- **Off position alternate message enable**

The current GNSS position is compared to the nominal position according to the algorithm defined in IALA A-126 Annex A, Example 1. The off position threshold distance is specified in metres. If the transceiver determines that it is 'off position' then the alternate reporting schedule for message #21 (index 2) is enabled. For example, the alternate reporting schedule could be configured to decrease the reporting interval if the AtoN has drifted off position. The off position flag in message #21 is set when off position regardless of this setting.

The transceiver off position algorithm is always operational and compares the current GNSS position to the nominal position of the transceiver.



It is essential that valid nominal position is entered and that a reasonable off position threshold is entered. If the default nominal position 00° 00' 00.00"N / 000° 00' 00.00"E is left unchanged then the transceiver will always be 'off position' resulting in the GNSS receiver being permanently enabled. This will lead to significantly increased power consumption and the 'off position' flag in the Aids to Navigation report will be set.

- **MMSI for addressed messages**

This is the destination MMSI used for all addressed message types generated by the transceiver. This is usually the MMSI of a shore station collecting status information from the transceiver. It is also possible to enable the acknowledgement of received binary messages (via message #7 or #13).

- **Dimensions**

The dimensions of the AtoN should be entered to the nearest metre. Guidance on the appropriate configuration of dimensions for various types of AtoN can be found in IALA A-126.

- **Radio channels**

Selection of alternative radio channels for AIS transmission and reception is possible, however in most cases the default channels (AIS1 and AIS2) should be used.

- **Transmitter power level**

The transmitter power level for the transceiver can be selected as 1W, 2W, 5W or 12.5W. The default value of 12.5W is appropriate for most scenarios.

7.3.2 Message schedule configuration

The layout of the message schedule tab is described in Figure 18.

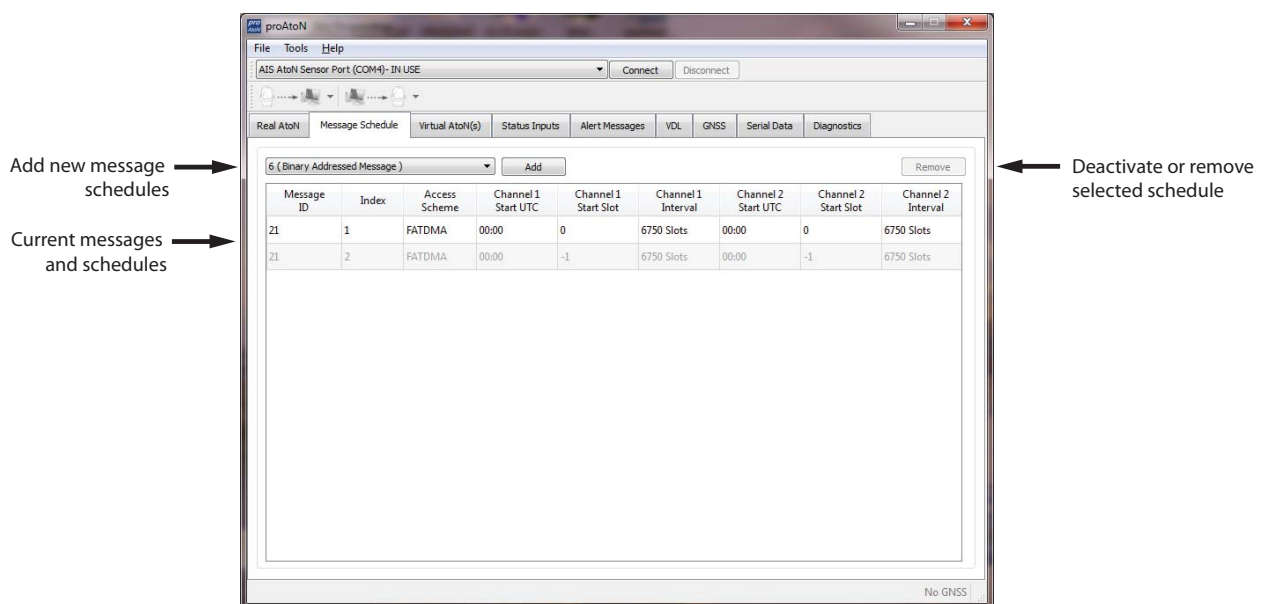


Figure 18 proAtoN message schedule tab layout

Default messages

An AIS AtoN position report is made using AIS message #21. This message occupies two AIS slots. The default configuration shown in proAtoN includes two message #21 schedule configurations. The first configuration, index 1, is the primary position reporting schedule for the transceiver. The second, index 2, is the alternate position reporting schedule selected when the 'off position' monitor is enabled and the AtoN is determined to be off position (see section 7.3.1). If the alternate 'off position' schedule is not required it can be deactivated by selecting the associated row in the message schedule table and clicking the 'Deactivate' button. When deactivated the alternate schedule will be greyed out.

Adding additional messages to the schedule

Additional binary data messages can be added to the schedule table by selecting the required message type from the drop down at the top of this tab, then clicking the 'Add' button. The available message types are:

- Message #8 - for broadcast of binary data to all other stations in range. The binary data may be provided by the extended sensor interface (if present) or third party equipment connected to the transceiver. See section 8 for further information.
- Message #6 - for transmission of binary data to an individual destination MMSI. The destination MMSI is set on the 'Real AtoN' tab. The binary data may be provided by the extended sensor interface (if present) or third party equipment connected to the transceiver. See section 8 for further information.
- Message #12 - for transmission of text messages to an individual destination MMSI. The destination MMSI is set on the 'Real AtoN' tab. This schedule is used for transmission of alert messages (see section 7.3.7).
- Message #14 - for broadcast of text messages to all other stations in range. This schedule is used for transmission of alert messages (see section 7.3.7).

Up to four separate schedules are available for each binary message type. Each individual schedule has an index from 1 to 4 which is used to identify that schedule (for example, message #8 index 2).

Access scheme selection

The access scheme for each message must be selected as either FATDMA or RATDMA (see section 3.2). The selection is made by selecting the required row in the schedule table, then clicking on the current access scheme in that row. A drop down menu will then appear in that location allowing selection of the required access scheme.

- FATDMA **T1** **T1+S** **T3** **T3+S**

Configuration of an FATDMA schedule continues in section 7.3.3.

- RATDMA **T3** **T3+S**

Configuration of an RATMDA schedule continues in section 7.3.4.

7.3.3 FATDMA Schedule configuration **T1** **T1+S** **T3** **T3+S**

Using the FATDMA (Fixed Access TDMA) access scheme the actual slot for each transmission made by the transceiver is specified. There are 2250 slots per minute (or frame) on each AIS channel. The scheduled slots must be reserved for the transceiver by an AIS base station operating in the same area using AIS message #20. Further information on FATDMA reservations and slot allocation schemes can be found in IALA A-124, Appendix 14.

The parameters required for an FATDMA schedule are as follows.

Channel 1 start UTC

This is the hour and minute for transmission on channel 1. This specifies the AIS frame (minute) within a day in which the start slot for channel 1 resides.

Channel 1 start slot

This is the slot number for the first transmission on channel 1. The slot number can range from -1 (transmission disabled on this channel) to 2249. Note that each message #21 transmission occupies two slots and associated base station slot reservations must therefore reserve two slots.

Channel 1 interval

This is the interval in slots between transmissions on channel 1. The interval can range from 0 to 3240000 slots, which equates to an interval of one day. Typically the interval is set to 13500 slots (6 minutes) on each channel which results in an overall interval of 3 minutes.

Channel 2 start UTC

This is the hour and minute for transmission on channel 2. This specifies the AIS frame (minute) within a day in which the start slot for channel 2 resides. Typically the channel 2 start time is offset by 3 minutes from the start time used for channel 1. With a 6 minute reporting interval on each channel this results in a transmission every 3 minutes on alternating channels.

Channel 2 start slot

This is the slot number for the first transmission on channel 2. The slot number can range from -1 (transmission disabled on this channel) to 2249. Note that each message #21 transmission occupies two slots and associated base station slot reservations must therefore reserve two slots.

Channel 2 interval

This is the interval in slots between transmissions on channel 2. The interval can range from 0 to 3240000 slots, which equates to an interval of one day. Typically the interval is set to 13500 slots (6 minutes) on each channel which results in an overall interval of 3 minutes.

Example FATDMA schedule

A typical transmission schedule requires that the AIS AtoN transceiver transmit AIS message #21 every three minutes on alternating channels. The transmission schedule is presented diagrammatically in Figure 19.

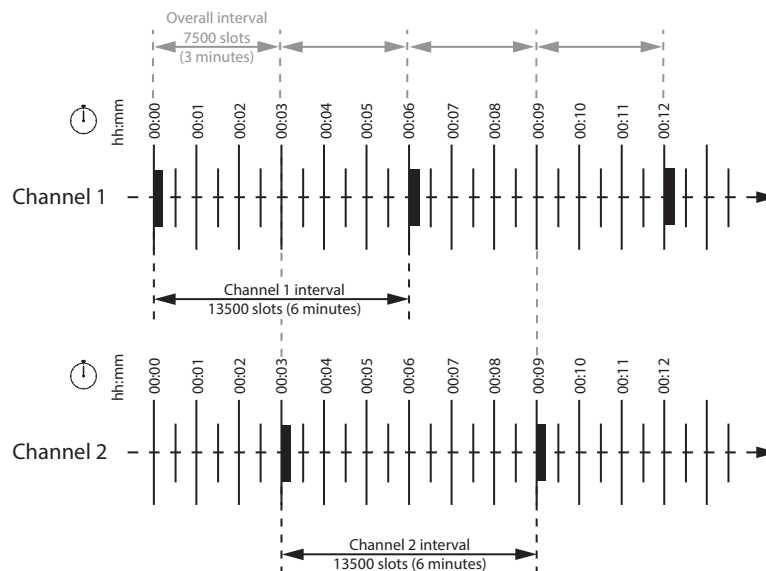


Figure 19 Example FATDMA schedule

This schedule can be configured using the following values:

- Channel 1 start UTC = 00:00 (the first frame of every hour)
- Channel 1 start slot = 0 (the first slot in the frame, so slots 0 and 1 are used by the message #21 transmission)
- Channel 1 interval = 13500 slots (this equates to a 6 minute interval as there are 2250 slots per minute)
- Channel 2 start UTC = 00:03 (the third frame of every hour)
- Channel 2 start slot = 0 (the first slot in the frame, so slots 0 and 1 are used by the message #21 transmission)
- Channel 2 interval = 13500 slots (this equates to a 6 minute interval as there are 2250 slots per minute)

The transceiver is now configured to report message #21 on channel 1 every 6th minute, and on channel 2 every 6th minute, but offset by three minutes from channel 1. This results in a transmission of message #21 every three minutes on alternating channels. The actual start slot selected for each channel will depend on the FATDMA allocations in the area of operation.

7.3.4 RATDMA Schedule configuration **T3** **T3+S**

Using the RATDMA (Random Access TDMA) access scheme the time for each transmission made by the transceiver is specified. The transceiver will determine the actual slots used for transmission based on internal knowledge of the AIS environment gained from the AIS receivers.

The parameters required for an RATDMA schedule are as follows.

Channel 1 start UTC

This is the hour and minute of the frame in which transmission will occur on channel 1. The slot used within this frame will be determined by the transceiver.

Channel 1 interval

This is the interval in minutes between transmissions on channel 1. A typical value is 6 minutes.

Channel 2 start UTC

This is the hour and minute of the frame in which transmission will occur on channel 2. The slot used within this frame will be determined by the transceiver.

Channel 2 interval

This is the interval in minutes between transmissions on channel 1. A typical value is 6 minutes.

Example RATDMA schedule

A typical transmission schedule requires that the AIS AtoN transceiver transmit AIS message #21 every three minutes on alternating channels. The transmission schedule is presented diagrammatically in Figure 20.

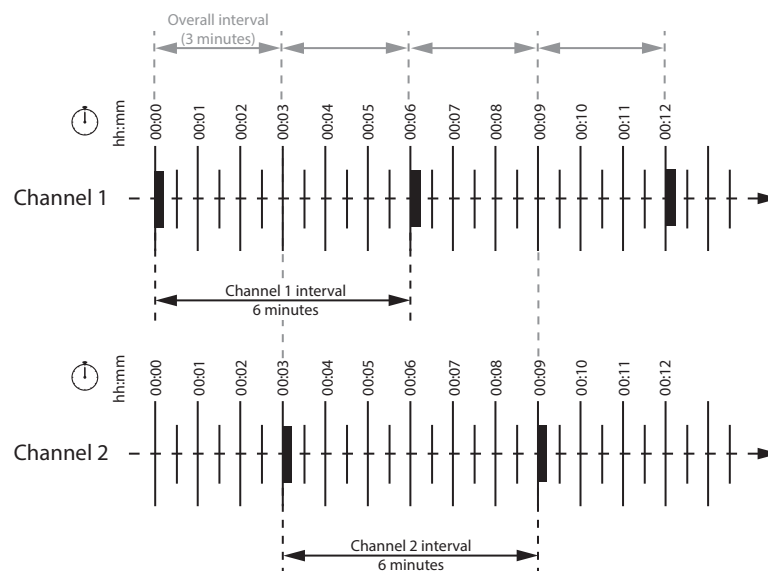


Figure 20 Example RATDMA schedule

This schedule can be configured using the following values:

- Channel 1 start UTC = 00:00 (the first minute of every hour)
- Channel 1 interval = 6 minutes
- Channel 2 start UTC = 00:03 (the third minute of every hour)
- Channel 2 interval = 6 minutes

The transceiver is now configured to report message #21 on channel 1 every 6th minute, and on channel 2 every 6th minute, but offset by three minutes from channel 1. This results in a transmission of message #21 every three minutes on alternating channels. The exact timings of the transmissions within the selected minute will vary as the transceiver selects available slots using RATDMA.

7.3.5 Virtual AtoN configuration

The transceiver can be configured to transmit position reports for up to five virtual or synthetic Aids to Navigation. This configuration is carried out using the *Virtual AtoN(s)* tab in proAtoN. Within this tab there are sub-tabs relating to each of the five virtual or synthetic AtoNs. The sub-tabs are visible at the left hand edge of the window. The layout of the virtual AtoN configuration tab is provided in Figure 21.

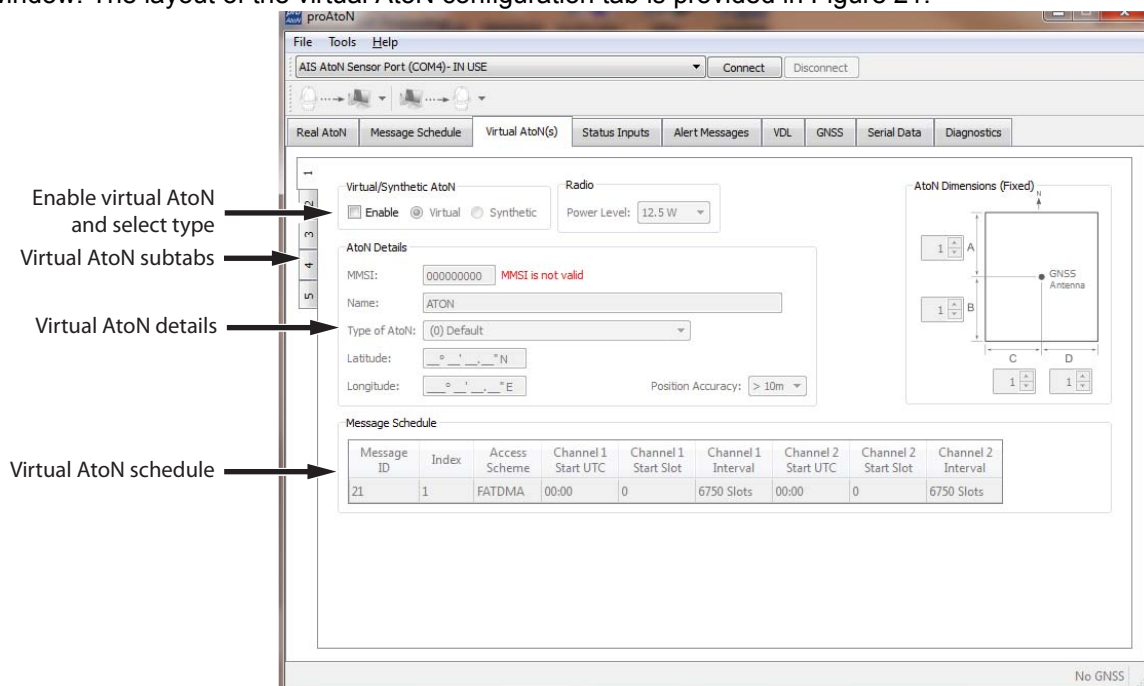


Figure 21 Virtual AtoN configuration tab layout

The following parameters are required to configure a virtual or synthetic AtoN. Note that the 'real' AtoN must be properly configured in order to make use of the virtual AtoN feature.

Virtual / Synthetic AtoN

Each virtual AtoN required must be separately enabled by checking the 'Enable' checkbox. The type of virtual AtoN can then be selected.

- Virtual AtoN

A virtual AtoN is transmission of message #21 for an Aid to Navigation that does not physically exist. A virtual AtoN may be used to mark a temporary hazard to navigation, e.g., a wreck. For further information on the use of virtual AtoNs please refer to IALA A-126, IALA O-143 and IALA guideline 1081.

- Synthetic AtoN

A synthetic AtoN is transmission of message #21 from an AIS station located remotely from the physical Aid to Navigation. An example of use is to provide an AIS AtoN target for a buoy or mark that is not capable of supporting AIS AtoN hardware.

Virtual / Synthetic AtoN Details

The basic configuration of a virtual or synthetic AtoN is comparable to that required for a 'real' AIS AtoN. Note that the MMSI number format is different:

- A virtual AtoN MMSI has the format 99MID6XXX, where MID is the appropriate national MID and XXX is a number unique to this station.

- A synthetic AtoN MMSI has the same format as a real AtoN MMSI, e.g., 99MID1XXX, where MID is the appropriate national MID and XXX is a number unique to this station.

The position of the virtual or synthetic AtoN must be configured appropriately to the position of the aid. Note that a virtual AtoN has no dimensions whereas the dimensions of a synthetic AtoN should be configured.

Virtual AtoN schedule

The transmission schedule for a virtual or synthetic AtoN must be configured in the same way as that for the 'real' AtoN. The TDMA access scheme, start times and intervals must be configured in the virtual AtoN tab following the guidance in section 7.3.3 or 7.3.4 as appropriate. When an FATDMA schedule is used it is important to ensure the slot allocations used for the virtual and real AtoNs are different in every case. Also note that two consecutive slots are used for each virtual AtoN report.

7.3.6 Status input configuration tab

AIS AtoN position reports (message #21) contain status information encoded as a bit sequence. The status bits contain the basic operational state of a connected lamp and RACON along with the overall health of the transceiver itself. Connection of a lamp and/or RACON is optional and requires equipment with a suitable health output. Interfacing of lamp and RACON status is described in sections 6.1.1, 6.1.3 and 6.2.4.

The status information can be obtained from one of three sources as described in section 6.1.3. The status input configuration tab is used to set the source and other associated parameters. The layout of the status input configuration tab is provided in Figure 22.

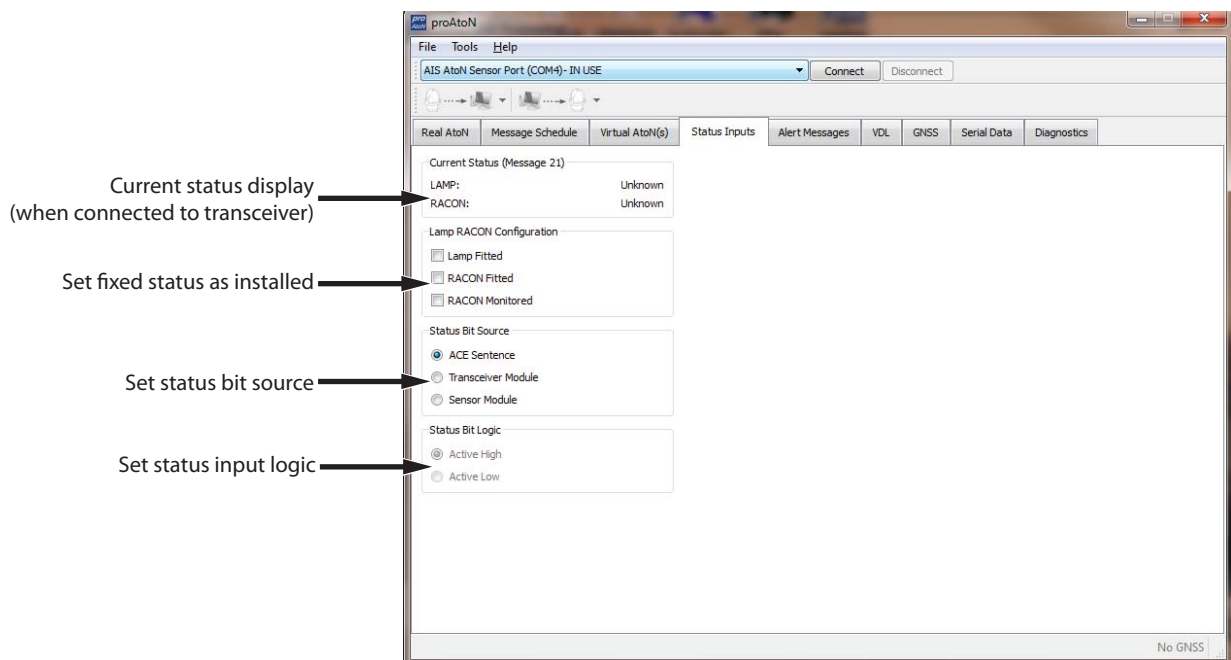


Figure 22 Status input configuration tab layout

Current status (message 21)

This section shows the current lamp and RACON status determined by the transceiver. The transceiver must be connected and powered from a DC supply in order for this display to operate correctly.

Lamp & RACON configuration

This section allows the fixed parameters of the lamp and RACON to be configured. The check boxes should be set according to the physical configuration. For example if a lamp status output is connected to the transceiver then the 'Lamp fitted' check box should be checked. If a RACON is connected it is also possible to define if the RACON is monitored or not.

Status bit source

Select the source for the status information to match the method used to provide status information to the transceiver (this is described in section 6.1.3).

Status bit logic

The logical sense of the physical status bit inputs (at either the basic or extended sensor interfaces) can be set here. This allows for interface of equipment with active high or active low status outputs.

7.3.7 Alert messages

The transceiver can be configured to transmit text messages for three different alert conditions.

- An addressed or broadcast text message can be transmitted when the transceiver detects a Built In Integrity Test (BIIT) failure.
- An addressed text message can be transmitted to an approaching vessel if the vessel comes within a configurable distance of the transceivers location. This function is only available with Type 3 variants and with full time receiver operation.
- An addressed or broadcast text message can be transmitted when the transceiver determines that it is off position (see section 7.3.1). This message is in addition to use of the alternate schedule for off position reporting (if the alternate schedule is enabled) and does not replace that function.

The layout of the alert messages configuration tab is provided in Figure 23.

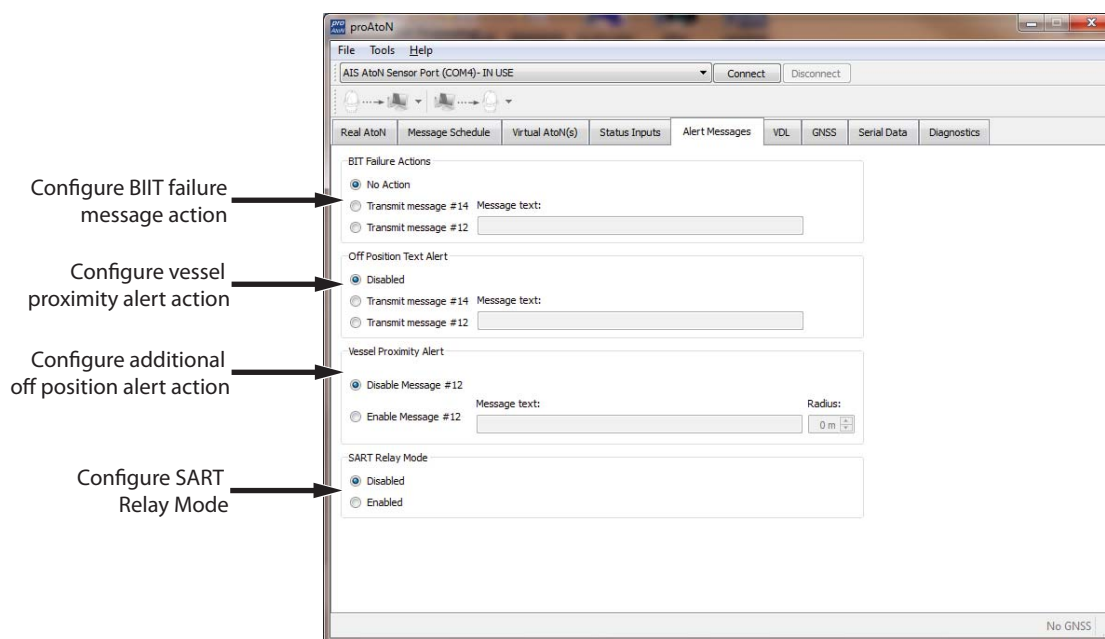


Figure 23 Alert messages configuration tab layout

BIIT failure actions

This section allows configuration of the text message to be transmitted on detection of a Built In Integrity Test failure (BIIT failure). Such a failure may indicate a problem with the transceiver and it may be prudent to warn vessels not to rely on the information provided by the transceiver in this situation. Note that the health of the transceiver is always transmitted as part of the standard Aids to Navigation position report (message #21), however the status contained in that message may not be shown on all display systems.

The available actions on BIIT failure are:

- No action - no message is transmitted on detection of a BIIT failure
- Transmit message #14. A broadcast text message is transmitted on detection of a BIIT failure. The text content of the message must be defined in the 'Message text' box.

- Transmit message #12. An addressed text message is transmitted on detection of a BIIT failure. The destination for the addressed message is configured on the 'Real AtoN' tab (see section 7.3.1)

In addition to configuration of the BIIT failure action a schedule for the associated message must be configured in the 'Message schedule' tab.

- Message #14 Index 1 must be configured if the message #14 action is selected.
- Message #12 Index 1 must be configured if the message #12 action is selected.

Vessel proximity alert

This section allows configuration of the text message to be transmitted on detection of vessel breaching a defined radius (or guard ring) around the transceiver. This message can be used to warn approaching vessels of potential collision with the AtoN. The addressed message is automatically sent to all vessels that breach the guard ring radius.

The available vessel proximity alert actions are:

- Disable message #12 - the vessel proximity alert function is disabled
- Enable message #12 - the function is enabled and the text content of the message to be transmitted must be defined in the 'Message text' box. The guard ring radius for the proximity alert must also be configured in the 'Radius' box; note that the value is set in metres.

In addition to configuration of the vessel proximity alert a schedule for the associated message must be configured in the 'Message schedule' tab.

- Message #12 Index 2 must be configured if the message #12 action is selected.

Off position alert

This section allows configuration of the text message to be transmitted when the transceiver detects that it is off position. The settings for off position detection are made on the 'Real AtoN' tab (see section 7.3.1). The configuration of an alternative off position message #21 reporting schedule is independent of the configuration of this text alert.

The available off position alert actions are:

- Disabled - no text message is transmitted when the transceiver determines that it is off position
- Transmit message #14. A text message is broadcast when the transceiver detects that it is off position. The text content of the message must be defined in the 'Message text' box.
- Transmit message #12. An addressed text message is transmitted on detection of an off position condition. The destination for the addressed message is configured on the 'Real AtoN' tab (see section 7.3.1)

In addition to configuration of the off position alert a schedule for the associated message must be configured in the 'Message schedule' tab.

- Message #14 index 2 must be configured if the message #14 action is selected
- Message #12 index 3 must be configured if the message #12 action is selected

SART Relay Mode

This control enables or disables the repeating of SART (Search and Rescue Transponder) messages detected by the AIS AtoN. This functionality is only relevant to Type 3 devices as receivers are required to detect the messages.

7.4 Transceiver diagnostics

The proAtoN application provides a number of features to assist with installation of an AIS AtoN and diagnosis of fault conditions. These features are available through the GPS, Serial Data and Diagnostics tabs in proAtoN.

7.4.1 GNSS tab

The GNSS tab shows the status of the GNSS receiver built into the transceiver. This provides an indication of the quality of the GNSS satellite signals being received along with the current position of the transceiver.

At least four satellites with a carrier to noise ratio in excess of 40 dBHz are required for an acceptable position fix. Relocating the transceiver or connecting an external GNSS antenna can help improve the signal quality and resulting position accuracy.

The internal GNSS receiver supports SBAS (Satellite Based Augmentation Service) to enable improved accuracy and integrity of GNSS position fixes. The availability of SBAS depends on the installation location of the transceiver (the WAAS SBAS service covers most of the US and the EGNOS service covers Europe).

7.4.2 Serial data tab

The serial data page shows all data output from the transceiver in NMEA0183 / IEC61162-1 format. It is also possible to send NMEA0183 / IEC61162-1 commands to transceiver if required for technical support or custom configuration. A facility to record the data to a file is provided by clicking the 'Log to File' button.

Certain sentence types can be filtered out of the output window by checking the relevant sentence type in the 'Filters' section of this tab.

7.4.3 Diagnostics tab

The Diagnostics tab provides system version and status information. This information may be required when requesting technical support for the product.

AtoN Details

- The connected AtoN Type is displayed as Type 1 or Type 3
- The application and bootloader software versions for the connected AtoN are displayed
- The serial number of the connected AtoN is displayed

Power status

- The VHF antenna VSWR (Voltage Standing Wave Ratio) as measured at the last AIS transmission is displayed. This value is for indication only. A value better than 3:1 is expected for a good antenna system. The alarm limit for antenna VSWR is set to 5:1. A perfect antenna would give a VSWR of 1:1.
- The system supply voltage is displayed in volts. The supply voltage must be between 9.6V and 32.6V for correct operation. The supply voltage alarm will activate outside of this supply voltage range.

Report generation

Clicking the 'Generate' button will produce full report of the transceiver status. This report may be requested by technical support personnel. After clicking the button select a suitable file name and location for the report file before clicking save.

Reported messages

During operation the transceiver will output a variety of status messages relating to the current operating state. These messages are for information only and do not represent a fault condition.

Message text	Description / Resolution
TX attempt failed (msg 6 no payload re-broadcast data)	A transmission of message #6 has failed as the payload data required for this message was not provided (by either the extended sensor interface, or an external system). The likely cause is a configuration error relating to data capture.
TX attempt failed (msg 8 no payload re-broadcast data)	A transmission of message #8 has failed as the payload data required for this message was not provided (by either the extended sensor interface, or an external system). The likely cause is a configuration error relating to data capture.
TX attempt failed (msg 12 no payload re-broadcast data)	A transmission of message #12 has failed as the payload data required for this message was not provided (by either the extended sensor interface, or an external system). The likely cause is a configuration error relating to data capture.
TX attempt failed (msg 14 no payload re-broadcast data)	A transmission of message #14 has failed as the payload data required for this message was not provided (by either the extended sensor interface, or an external system). The likely cause is a configuration error relating to data capture.
Standby blocked: Off position algorithm	The transceiver can't enter standby (low power) mode because the 'off position' algorithm has detected an off position condition. Moving the transceiver within the configured operating radius will resolve this.
Standby Blocked: Acquiring GPS	The transceiver can't enter standby (low power) mode because it is currently acquiring a GNSS position fix. Standby operation will resume when a fix is acquired.
Standby disabled	Standby mode (low power operation) is disabled by configuration.
Standby Blocked: USB connected	The transceiver will not enter standby (low power) mode whilst the USB interface is connected to a PC.
Standby Blocked: Shell running	The transceiver will not enter standby (low power) mode whilst the configuration shell is active.
Standby Blocked: Receivers enabled	The transceiver can't enter standby mode if the current configuration requires that the receivers are active.
Exiting standby	Information only on exit of standby mode.
Entering standby for xx seconds	Information only on entry to standby mode.

Active alarms

The transceiver incorporates BIIT (Built In Integrity Test) routines which continuously monitor key operating parameters. Should an integrity test fail the failure will be indicated in the active alarms area.

Alarm text	Description / Resolution
Tx Malfunction	A transmitter malfunction has been detected - please contact your supplier.
Antenna VSWR exceeds limits	The VHF antenna VSWR is above the permitted limit. Check the VHF antenna, cable and connections are sound. The VSWR measured at the last transmission is displayed on the proAtoN diagnostics tab.
Rx Channel 1 malfunction	A receiver malfunction has been detected - please contact your supplier.
Rx Channel 2 malfunction	A receiver malfunction has been detected - please contact your supplier.
EPFS failure	No position is available from the internal GNSS receiver - please contact your supplier.
DGNSS input failed	No data is available from the external source of differential GNSS correction data. Please check connections, baud rate and equipment configuration.
Supply voltage	The transceiver power supply voltage is outside of the permitted range. The measured supply voltage is displayed on the proAtoN diagnostics tab.
Low forward power	The transmitter forward power is below a preset limit - please contact your supplier.
Synchronisation lost	Timing information is not available from the internal GNSS receiver - please contact your supplier.

7.5 Other features

The proAtoN application provides the following additional features to support transceiver installation and upgrade.

7.5.1 Offline configuration

A complete AtoN configuration including all schedule parameters, virtual AtoN configuration and other settings can be saved to a file. This feature allows a configuration file to be created without access to the transceiver hardware. The file can be loaded at a later time and synchronised with the transceiver hardware.

This feature is available using the 'Save File' and 'Load File' items available on the File menu. The configuration is saved as a .pad file using a format proprietary to the proAtoN application.

When the proAtoN application is launched a new blank configuration file is created. You will be prompted to save this file if changes are made without saving the file prior to closing the application, or if a 'New file' is created from the File menu.

8 Operation T1 T1+S T3 T3+S

Once configured and connected to a power supply and antennas the transceiver will operate autonomously. Correct operation can be confirmed by checking for reception of Aids to Navigation reports (message 21) using another AIS device.

8.1 Standby operation

During operation the transceiver will enter a low power standby mode between scheduled transmissions. The unit will not enter standby mode under the following conditions.



If entry into standby mode is blocked by one or more of these conditions the power consumption of the transceiver will increase significantly.

- USB interface connected - the transceiver will not enter standby mode whilst the USB interface is connected to a PC. The USB interface should be disconnected once the AtoN is configured and deployed.
- GPS acquisition - the transceiver will not enter standby mode for the first 12 minutes of operation with GPS position available after power is first applied. This period is used to acquire the current number of UTC leap seconds from the GPS system. This only occurs at initial power up and subsequently on four occasions during each calendar year when it is possible for the number of leap seconds to change.
- Off-position algorithm - the transceiver will not enter standby mode when the off position algorithm is active and the transceiver is determined to be off position. Whilst off position the GPS receiver is permanently enabled in order to monitor the position according to the algorithm provided in IALA A-126 Annex A1. Should the transceiver return on position standby operation will resume
- Schedule configuration - the transceiver will not enter standby mode if the configured reporting schedule prevents standby operation. The transceiver will only enter standby mode when there is a minimum of 15 seconds between scheduled FATDMA transmissions or 1 minute and 5 seconds between scheduled RATDMA transmissions.
- Vessel Proximity Alert - the transceiver will not enter standby mode when the vessel proximity alert message is enabled. In this scenario, the Carbon unit will be continually monitoring AIS messages to establish the proximity of vessels.

During operation the transceiver will output AITXT sentences to the NMEA0183 port 1 indicating any conditions blocking entry to standby mode.

9 Data messages and data sources

The transceiver can be configured to transmit a range of data messages in addition to the standard AIS AtoN position report. The purpose, content and means of configuring supported message types is described in the table below.

ID	Message type	Description and use	Content sources
6	Addressed binary data	This message is addressed to another individual AIS station, usually an AIS base station, which is configured to decode the message content. The message content is binary data in a standardised or proprietary format. The message may be used to communicate status information about the AtoN and / or metrological and hydrological data captured at the AtoN.	The binary content for this message can be generated by the extended sensor interface, or provided by suitably configured third party equipment. See sections 9.1 and 9.2 for further information.
8	Broadcast binary data	This message is broadcast to all other AIS stations. The message content is binary data in a standardised or proprietary format. The message may be used to communicate status information about the AtoN and / or metrological and hydrological data captured at the AtoN.	The binary content for this message can be generated by the extended sensor interface, or provided by suitably configured third party equipment. See sections 9.1 and 9.2 for further information.
12	Addressed safety related message	This message is addressed to another individual AIS station and contains safety related text. The text can warn of a failure of the AtoN equipment, alert an approaching vessel to danger of collision with the AtoN or indicate that the AtoN is operating off position	See section 7.3.7 for further information.
14	Broadcast safety related message	This message is broadcast to all other AIS stations and contains safety related text. The text can warn of a failure of the AtoN equipment or indicate that it is operating off position	See section 7.3.7 for further information.

Configuration of the AtoN for capture of data for messages #6 and #8 is described in the following sections. The options available for data capture depend on the transceiver variant.

9.1 Product variants without the extended sensor interface **T1** **T3**

The data payload for binary messages #6 or #8 must be provided by external equipment interfaced to the transceiver using the transceiver NMEA0183 port 1 available at the Power and transceiver interface connector described in section 5.4.1. The payload data for the message is requested by the transceiver using a proprietary MCR sentence and provided by the external equipment using the MPR sentence defined in section 10.2.9.

9.2 Variants with the extended sensor interface **T1+S** **T3+S**

The extended sensor interface supports the construction of data payloads for the following messages:

- Message #6
 - UK GLA AtoN monitoring message DAC 235, FI 10 UK (default)
 - Zeni Lite Buoy Co. AtoN monitoring message DAC 000, FI 00 (optionally configured with required DAC and FI)
- Message #8 IMO Metrological and Hydrological data
 - DAC 001, FI 31 (default)
 - DAC 001, FI 11 (optionally configured for use with legacy systems)

9.2.1 Transceiver configuration

In order to transmit the supported binary messages the transceiver must be configured as described below.

For message #6:

- The transceiver must be configured with a schedule for message #6 index 1.
- The schedule can be either FATDMA or RATDMA. The recommended interval for this message is 12 minutes (27000 slots). Configure the transceiver with a schedule for message #6 index 1 using proAtoN following the guidance in section 7.3.2.
- The destination MMSI for addressed messages must also be configured as described in section 7.3.1. This should be the MMSI of a shore station that will receive and display the monitoring message.
- Note that each message #6 occupies one slot.

For message #8:

- The transceiver must be configured with a schedule for message #8 index 1.
- The schedule can be either FATDMA or RATDMA. The recommended interval for this message is 12 minutes (27000 slots). Configure the transceiver with a schedule for message #8 index 1 using proAtoN following the guidance in section 7.3.2.
- Note that each message #8 FI 31 occupies two slots.

9.2.2 Configuration of the extended sensor interface (T1+S) (T3+S)

The extended sensor interface is configured using a range of simple shell commands. The general commands are detailed here. Commands related to specific external devices are detailed in the documents for those devices.

9.2.3 Accessing the extended sensor interface shell

- Connect to the extended sensor interface using a terminal emulator (TeraTerm for example) running on a PC. The PC COM port for the sensor interface can be found from the Device Manager or Serial Connection drop down menu of proAtoN, if connected. The port's friendly name is "AIS AtoN Sensor Port".
- The following terminal configuration is required.
 - Baud rate:38400
 - Data: 8 bit
 - Parity: None
 - Stop: 1 bit
 - Flow Control:None
 - Newline Termination Characters: Receive: <CR>, Transmit: <CR><LF>
- Once connected, the shell can be entered using the +++ command. This command will cause the shell prompt '>' to appear.

9.2.4 General extended sensor interface configuration commands

Table 4 below details the general commands used to configure the extended sensor interface.

Command	Parameter	Description
option	Int: option	Select either Zeni Lite configuration option 0,1, 2, 3 or 4. Defaulted to option 1. Valid option parameter values 0 to 4.
msg6ver	int: version	Selects the version of message #6 to build. 1 = GLA version (Default) 2 = Zeni Lite version
msg6ver	int: version	Selects the version of message #8 to build. 1 = Circ.236 version, FI 11 2 = Circ.289 version, FI 31(Default)
showvalues	none	Displays the current values for all optional configuration parameters.
sensorhealth	none	Displays the health status of external devices for the current configuration option.

Table 4 General Extended Sensor Interface Configuration Commands

9.2.5 Zeni Lite Message #6 configuration commands

The Zeni Lite message #6 has a range of configurable parameters. The related commands are detailed in Table 5 below.

Command	Parameter	Description
msg6dac	int: decimal DAC value	Sets the DAC value to be used in the Zeni Lite version of message #6. Range: 0 (default) to 1023.
msg6fi	int: decimal FI value	Sets the FI value to be used in the Zeni Lite version of message #6. Range: 0 (default) to 63
subid	int: decimal Sub-id value	Sets the Sub-application ID value to be used in the Zeni Lite version of message #6. Range: 0 to 65535. Default = 1.
pwrtype	int: power supply type	Sets the power type value to be used in the Zeni Lite version of message #6. 1 = DC (Default), 2 = AC
voltthresh	int: decimal threshold value	Sets the battery voltage threshold at which the good health flag is set. Range: 0 to 330 (in 0.1volt steps). Default = 100. (Value is only used when pwrtype is 1, DC.)

Table 5 Zeni Lite Message #6 Configuration commands

9.2.6 ADC configuration commands

Two possible ADC sources are used for voltage and current values. The source is selected and the scaling details can be entered using the commands detailed in Table 6 below. Note that installers are responsible for designing and installing the necessary external interface circuitry to make use of the alternate data sources and for setting the scaling values to match the input to output ranges and optimise the output accuracy.

Command	Parameter	Description
voltsource	int: source	Sets the source for voltage data message #6 1 = internal voltage ADC 2 = external isolated ADC 0
setvoltscale	int dividend int divisor int kfactor int offset	User accessible command to set the scaling for the Internal voltage ADC values See section xx.xx for details of the scaling method.
setaltvoltscale	int dividend int divisor int kfactor int offset	User accessible command to set the scaling for the ISO 1 ADC values See section xx.xx for details of the scaling method.
enableisense	int: on/off	Enables the current sense functionality. This is disabled by default for power and processing efficiency.
altisource	Int: on/off	Selects the source for current sense values. 0 = internal ISENSE loop (default) 1 = ADC 2
isensethresh	int: decimal threshold value	Sets the raw ADC count, at which the current OK flag is set / value reported in message #6. Default to 73 = 100mA threshold defined for the GLA message. Using the internal ISENSE loop.
setisensescale	int dividend int divisor int kfactor int offset	User accessible command to set the scaling for the ISENSE ADC values. See section xx.xx for details of the scaling method.
setaltisensescale	int dividend int divisor int kfactor int offset	User accessible command to set the scaling for the ISO ADC 1 ADC values. See section xx.xx for details of the scaling method.

Table 6 ADC configuration commands

9.2.7 ADC Scaling

The raw values read from isolated ADC 1 and 2 can be scaled to suit the input and output ranges and to optimise the accuracy of the reported value. There are a range of factors that influence the accuracy of the scaled value and installations may need to be optimised on a case-by-case basis.

The formula used to scale values is:

$$\text{Scaled_value} = ((\text{Raw_value} - \text{offset}) * \text{dividend}) / \text{divisor} + \text{kfactor}$$

Where:

- offset = the adjustment for raw ADC values that are not zero when the input voltage is zero (a situation that can be caused by some connection circuits).
- dividend = the output range
- divisor = the input range (resolution)
- k_factor = zero

The Isolate ADCs (as described in section 6.2.1) have 16 bit resolution. The non-isolated ADCs, used for internal voltage and ISENSE measurements, have 12 bit resolution.

Installers will need to establish the required scaling values theoretically depending on the use case, input them using the relevant shell commands described in Table 6 and adjust the values experimentally to optimise the result.

Additional sensor shell commands, `getadccont <ADC number; 0 = ISO ADC 1, 1 = ISO ADC 2>` and `getadccontscaled <ADC number>` can be used to evaluate the results. `getadccont` is particularly useful for testing the raw output for the ADCs when zero input voltage is applied. This value can be used as the offset.

For reference, and to enable resetting the values, the default values for the ADCs are:

- Isolated ADC 1 and ADC 2
 - offset = 0, dividend = 1, divisor = 42, k_factor = 0
- Internal ISENSE non-isolated ADC
 - offset = 12, dividend = 5000, divisor = 4095, k_factor = 0
- Internal supply voltage ADC
 - offset = 0, dividend = 180, divisor = 823, k_factor = 0

9.2.8 Message #6 Data Mapping

The tables below show the mapping of data sources to the message #6 fields.

Message #6 DAC 235, FI 10 data field	Data Source	Notes
Analogue voltage (internal)	Supply voltage to the transceiver	No additional connections are required for this measurement
Analogue voltage (external 1)	Extended sensor interface isolated analogue input 1	See pin allocation in section 5.5.4 and input description in section 6.2.1 Note that the default scaling values for this ADC are set for this message.
Analogue voltage (external 2)	Extended sensor interface isolated analogue input 2	See pin allocation in section 5.5.4 and input description in section 6.2.1 Note that the default scaling values for this ADC are set for this message.
Status bits (internal, 5 bits)	Copy of status bits used in message #21	See section 7.4 for information on configuration of status source.

Message #6 DAC 235, FI 10 data field	Data Source	Notes
Status bits (external, 8 bits)	Bit 0 - Isolated digital input 1 Bit 1 - Isolated digital input 2 Bit 2 - Isolated digital input 3 Bit 3 - Isolated digital input 4 Bit 4 - Isolated digital input 5 Bit 5 - Set to 1 if lamp current sense $\geq 100\text{mA}$, else set to 0 Bit 6 - non isolated digital input 1 Bit 7 - non isolated digital input 2	See sections 5.5.3 and 5.5.4 for pin allocations and sections 6.2.3, 6.2.4 and 6.2.5 for descriptions of these inputs. The lamp current sense bit can use the internal ISENSE loop (default) or ISO ADC 2
Off position status	Transceiver off position algorithm	Transceiver off position algorithm
Analogue voltage (internal)	Supply voltage to the transceiver	No additional connections are required for this measurement

Table 7 Data mapping for message #6 DAC 235, FI 10

Message #6 Zeni Lite Format	Data Source	Notes
DAC	User Input	See section 9.2.3.1
FI	User Input	See section 9.2.3.1
Sub-application ID	User Input	See section 9.2.3.1
Voltage Data	Internal Voltage or External Isolated ADC 1	See sections 9.2.3.1, 9.2.3.2 and 9.2.3.3
Current Data	Internal ISENSE loop or External Isolated ADC 2	See sections 9.2.3.1, 9.2.3.2 and 9.2.3.3
Power Supply Type	User Input	See section 9.2.3.1
Light Status	Isolated DI 1	See section 7.4 for information on configuration of status source.
Battery Status	Voltage Data value compared with user input threshold.	Only functions is power supply type is DC
Off-position Status	Transceiver off position algorithm	Transceiver off position algorithm

Table 8 Data mapping for message #6 Zeni Lite format

9.2.9 External device support

The unit currently supports the following external devices which can be configured in number of combinations (“options”) and the data used to populate message #8 Metrological and Hydrological data. Two formats of this message are supported; DAC 001, FI 31 and DAC 001, FI 11.

- Airmar PB200 / 150WX Weather Station
- Impress S12C Water Pressure and Temperature gauge
- RM Young Wind Monitor
- JFE Aadvantch Co. Current Meter AEM-RS
- Zeni Lite GPS Wave Meter
- Vaisala Weather Transmitter WXT520
- Nortek AS Aquadopp Profiler

Separate guides are available for each device detailing the connection and configuration arrangements.

The configuration options are shown in Table 9 below. The default configuration for Akari is ‘Option 1’

Connection	RS422	RS 232 A	RS232 B
Option 0	Airmar PB200 / 150WX*		Impress Water Meter (SDI-12)**
Option 1	RM Young Wind Meter	Advantech Current Meter	Zeni Lite Wave Meter
Option 2	Viasala Weather Station	Aquadopp Current Profiler	Zeni Lite Wave Meter
Option 3	RM Young Wind Meter	Aquadopp Current Profiler	Zeni Lite Wave Meter
Option 4	Viasala Weather Station	Advantech Current Meter	Zeni Lite Wave Meter

Table 9 Sensor Configuration Options

* this device can be connected via RS422 or RS232

** this device is connected via SDI-12 (which disables RS232 B)

The extended sensor interface can also be adapted through software changes to support almost any equipment that might be encountered in an AtoN application. If your application requires interface to equipment other than that listed here please contact your supplier to discuss your requirements.

10 Manual configuration T1 T1+S T3 T3+S

The transceiver is configured using standardised NMEA0183 (IEC61162-1/2) sentences developed for configuration of AIS Aids to Navigation transceivers.

10.1 Basic Type 1 AIS AtoN configuration (FATDMA operation)

The following information is the minimum required configuration for a Type 1 AIS AtoN reporting message #21 only.

- The AtoN station must be configured with the 'real' AtoN MMSI using the AID command.
- The AtoN station must be configured with an Name, Charted position, operating radio channels and dimensions using the ACF and ACE commands.
- The AtoN should be configured to broadcast message 21 using the AAR command. Note that the slots selected for the AIS AtoN transmissions in FATDMA mode must be reserved by a base station operating in the area in which the AIS AtoN will be deployed.

10.2 NMEA0183 / IEC61162 configuration sentences

The following section documents the standardised NMEA0183/IEC61162 sentences used for AIS AtoN configuration and control.

Please refer to IEC61162-1 (Edition 4) for complete details of the configuration sentence structure.

The configuration sentence formats described in this section are used to both configure the device and as the response format from the device when queried for current status. The query command format is as follows:

\$--AIQ,ccc*hh<CR><LF>

└─ Sentence formatter of data being requested
(e.g.,AAR)

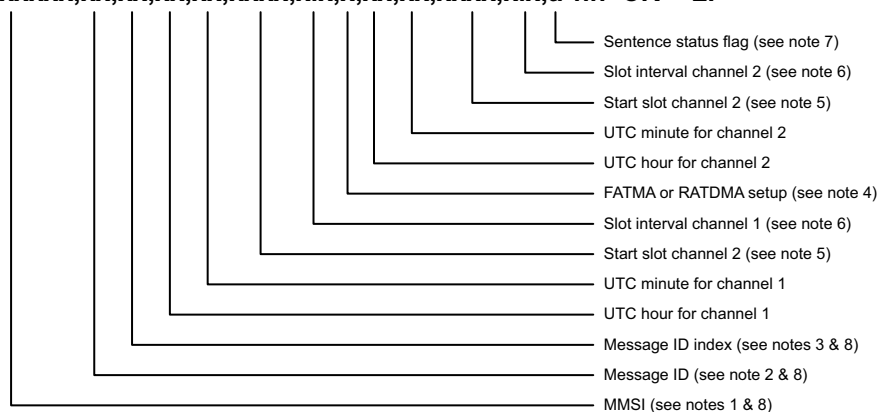
For example the query command \$ECAIQ,AAR*21 requests the transceiver output an AAR sentence containing the currently configured broadcast rates for the AtoN station.

Configuration sentences are communicated using the transceiver USB interface.

10.2.1 AAR - Configure broadcast rates for AtoN station

This sentence assigns the schedule of slots that will be used to broadcast Message 21 and other allowed AIS AtoN Station messages. It provides the start slot and interval between the slots used for consecutive transmissions for the message. The AIS AtoN Station should apply the information provided by this sentence to autonomously and continuously transmit the VDL messages until revised by a new AAR sentence. The AIS AtoN Station, upon receipt of an AAR Query for this information, will generate sentences for configured messages providing the current broadcast schedule. New AAR assignments will override existing AAR assignments.

\$--AAR,xxxxxxxx,xx,xx,xx,xx,xxxx,x.x,x,xx,xx,xxxx,x.x,a*hh<CR><LF>



- Note 1 The MMSI is defined in the AID sentence. This field contains the linkage between the MMSI definition (AID), Message 21 configuration (ACF, and ACE) and scheduling (AAR) of Message 21 transmissions.
- Note 2 Message ID is the message identification of the message being scheduled. When Message ID is 0 this indicates that the slots being defined will be used for chaining messages. These slots are not reserved on the VDL via a Message 20 until the competent authority requires their use and will reserve the slots at that time for the proper duration. These slots can be used for chaining or for MPR single transmission.
- Note 3 Message ID Index is used when there are multiple versions of a Message ID. This index value should start at 1.
- Note 4 Used to select whether the AAR is configuring an FATDMA schedule or RATDMA/CSTDMA schedule (0 indicates FATDMA, 1 indicates RATDMA)
- Note 5 For all messages which need to be transmitted in FATDMA mode, starting slot ranging from -1 to 2249 should be used. A value of -1 discontinues broadcasts of the message when the AAR sentence is sent to the AtoN Station, and indicates that no message has been broadcast if the AAR sentence is received from the AtoN Station. A null field indicates no change to the current start slot setting when sent to the AtoN Station, and indicates that the start slot has not been set, i.e. is unavailable, when the AAR sentence is received from the AtoN Station. For an RATDMA transmission schedule, this field will be Null.
- Note 6 For all messages which need to be transmitted, in FATDMA mode slot Interval ranging from 0 to (24*60*2250; once per day) and in RATDMA/CSTDMA mode, time interval ranges from 0 to (24*60*60) s. A null field indicates no change to the current slot interval setting when sent to the AtoN Station, and indicates that the slot interval has not been set, i.e. is unavailable, when the AAR sentence is received from the AtoN Station.
- Note 7 This field is used to indicate a sentence that is a status report of current settings or a configuration command changing settings. This field should not be null.
"R" = sentence is a query response
"C" = sentence is a configuration command to change settings.
- Note 8 The MMSI/Message ID/Message ID index are used to reference a table of messages loaded using MPR, ACF/ACE; this sentence defines the broadcast schedule for each message. Each message in this table is referenced by the combination of MMSI, Message ID, and Message ID index.

10.2.2 ACE - Extended general AtoN Station configuration

This sentence and the ACF sentence are used to configure the AtoN Station parameters when it is initially installed, and later in order to make changes to the way it operates. This sentence supports system administration of the AIS AtoN Station operation.

\$--ACE,xxxxxxxx,hh,xxxx,x,x,x,c--c,xxxxxxxx,a,*hh<CR><LF>



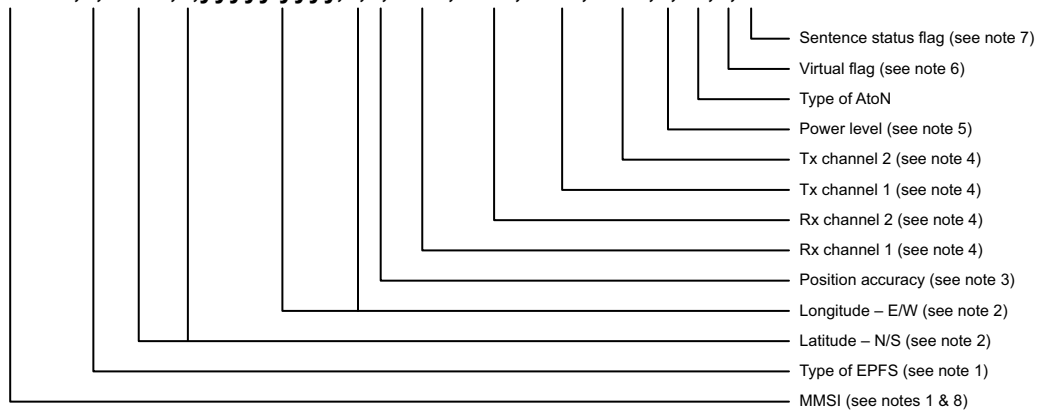
- Note 1 AtoN status bits, indication of the AtoN status, default "00hex": for a Virtual AtoN, this field should be 00hex. The three most significant bits represent the page ID.
- Note 2 The off-position indicator is generated when this threshold is exceeded (distance in metres).
- Note 3 Determines the behaviour of AtoN for message acknowledgement (Message 7 and 13):
0 will provide acknowledgement as defined by manufacturer,
1 will not provide acknowledgement.
- Note 4 Off-position behaviour:
0 – maintain current transmission schedule,
1 – use new reporting interval configured by AAR using message ID index.
- Note 5 Synch lost behaviour:
0 – silent,
1 – continue as before.
- Note 6 Name of the AtoN: maximum 34 characters.
- Note 7 Reference point of reported position; should be given as dimension (aaabbbccdd) of the buoy.
(See IALA A-126)

- Note 8 This field is used to indicate a sentence that is a status report of current settings or a configuration command changing settings. This field should not be null.
 "R" = sentence is a query response,
 "C" = sentence is a configuration command to change settings.

10.2.3 ACF - General AtoN Station configuration

This sentence and the ACE sentence are used to configure Message 21 content for the AtoN Station and all of the Synthetic/Virtual AtoN Stations associated with the AtoN Station.

\$--ACF,xxxxxxxx,x,IIII.IIII,a,yyyyy.yyyy,a,x,xxxx,xxxx,xxxx,xxxx,x,xx,x,a*hh<CR><LF>

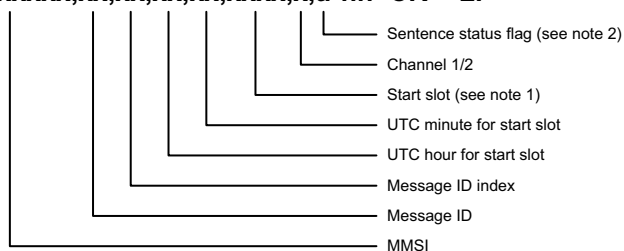


- Note 1 Identifies the source of the position, see ITU-R M.1371 Message 21 parameter (type of electronic position fixing device).
- Note 2 Nominal or charted position.
- Note 3 0 = low > 10 m,
1 = high < 10 m; differential mode of DGNSS. VHF channel number, see ITU-R M.1084.
- Note 4 VHF channel number, see ITU-R M.1084.
- Note 5 0 = default manufacturer power level (nominally 12,5 W),
1 to 9 as defined by the manufacturer.
- Note 6 Virtual AtoN flag
0 = Real AtoN at indicated position (default),
1 = Virtual AtoN,
2 = Synthetic AtoN (flag remains 0 in message 21 but the repeat indicator must be > than 0).
- Note 7 This field is used to indicate a sentence that is a status report of current settings or a configuration command changing settings. This field should not be null.
 "R" = sentence is a query response,
 "C" = sentence is a configuration command to change settings.
- Note 8 The MMSI/Message ID/Message ID Index are used to reference a table of messages loaded using MPR/ACF/ACE. This sentence defines the broadcast schedule for each message. Each message in this table is referenced by the combination of MMSI, Message ID and Message ID Index.

10.2.4 AFB - Forced broadcast

This sentence is used to force a transmission of the indicated VDL message, this message is already known to the AIS AtoN Station through AAR/MPR or ACE/ACF/AAR configuration commands.

\$--AFB,xxxxxxxx,xx,xx,xx,xx,xxxx,x,a*hh<CR><LF>



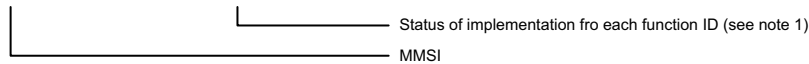
- Note 1 If the start slot is null, the AtoN Station will use RATDMA for transmission.

- Note 2 This field is used to indicate a sentence that is a status report of current settings or a configuration command changing settings. This field should not be null.
 "R" = sentence is a query response
 "C" = sentence is a configuration command to change settings.

10.2.5 AFC - AtoN function ID capability

This sentence is used to provide the capability information of implemented function ID by the EUT. This sentence is initiated with a QAFC and the response is the AFC.

\$--AFC,xxxxxxxx, hhhhhhhhhhhhhhhhh*hh<CR><LF>

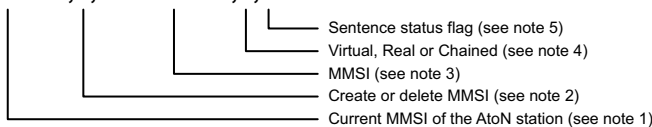


- Note 1 Each bit corresponds to the function ID number and the bit value "0" indicates the function ID number is not supported and "1" indicates supported. The most significant bit is function ID "0".

10.2.6 AID - MMSI configuration

This sentence is used to load, for an AtoN Station, its Real, Virtual and chained MMSI(s). The MMSI from the factory shall be as defined by the manufacturer. Each AtoN Station will maintain a table of its MMSI(s) and the messages associated with these MMSI(s). This sentence is also user to load the destination MMSI for addressed messages. To set the destination MMSI using this sentence set the 'Virtual, Real or Chained' field to 0. Note that only one destination MMSI can be configured

\$--AID,xxxxxxxx,x,xxxxxxxx,a,a*hh<CR><LF>

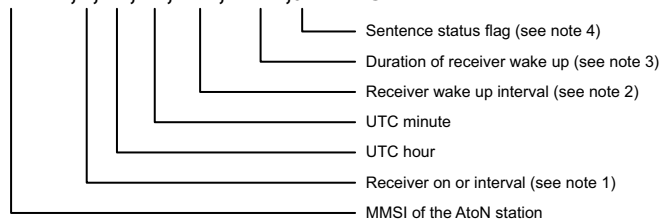


- Note 1 The MMSI of the station being addressed. The initial factory setting should be defined by the manufacturer, for example 000000000.
- Note 2 The indicator to define if the MMSI is being created/changed (1) or deleted (0). If own station MMSI is deleted it should revert to the factory setting. If a Virtual AtoN is deleted, then all associated messages for that Virtual AtoN are also deleted.
- Note 3 The current MMSI to be created/changed/or deleted.
- Note 4 Real AtoN, chained, or Virtual AtoN – Real is own station, chained indicates an MMSI that this station is responsible for relaying messages to and from, a Virtual AtoN indicates an MMSI that this station is responsible for generating at least a Message 21.
 "R" – Real AtoN;
 "V" = Virtual/Synthetic AtoN;
 "P" = parent AtoN in the chain;
 "C" = child AtoN in the chain.
 "0" = Set destination MMSI for addressed messages.
- Note 5 This field is used to indicate a sentence that is a status report of current settings or a configuration command changing settings. This field should not be null.
 "R" = sentence is a query response,
 "C" = sentence is a configuration command to change settings.

10.2.7 ARW -Configure the receiver turn-on times

This sentence defines the operational period for the receivers. When chaining the duration of receiver wake up time must be sufficient to allow correct operation of a chain.

\$--ARW,xxxxxxxx,x,xx,xx,xxx,xxx,a*hh<CR><LF>



Note 1 0 = use interval setting as defined below;
1 = turn receiver on.

Note 2 Interval between receiver activation:
1 – 60 min if UTC hour is set to 24;
1 – 256 h if UTC hour is 0- 23;
(Note: 168 h is once per week).

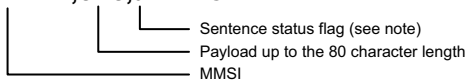
Note 3 Maximum awake time (1 440 min is 24 h).

Note 4 This field is used to indicate a sentence that is a status report of current settings or a configuration command changing settings. This field should not be null.
"R" = sentence is a query response,
"C" = sentence is a configuration command to change settings.

10.2.8 MCR - Configure proprietary AtoN control

The payload of this sentence will be proprietary information used to control the AtoN Station.

\$--MCR,xxxxxxxx,c--c,a*hh<CR><LF>

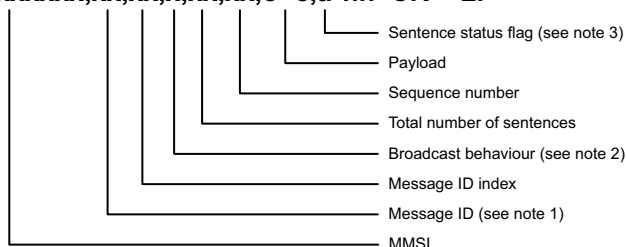


Note 1 This field is used to indicate a sentence that is a status report of current settings or a configuration command changing settings. This field should not be null.
"R" = sentence is a query response,
"C" = sentence is a configuration command to change settings.

10.2.9 MPR - Message configuration of payload re-broadcast

This message will be used to command the AIS AtoN Station to rebroadcast the payload or to define a new message for autonomous, continuous transmission. The AAR configuration with message ID/message ID index for a specific MPR must precede the MPR to identify it as autonomous continuous transmission. If it is a single transmission, this payload will be broadcast using the slots reserved by the AAR with message ID/message ID Index = 0, or it will use the next available slot.

\$--MPR,xxxxxxxx,xx,xx,x,xx,xx,c--c,a*hh<CR><LF>



Note 1 The following messages are supported by ITU-R M.1371 Messages 6, 8, 12, 14, 25, 26 and other appropriate messages.

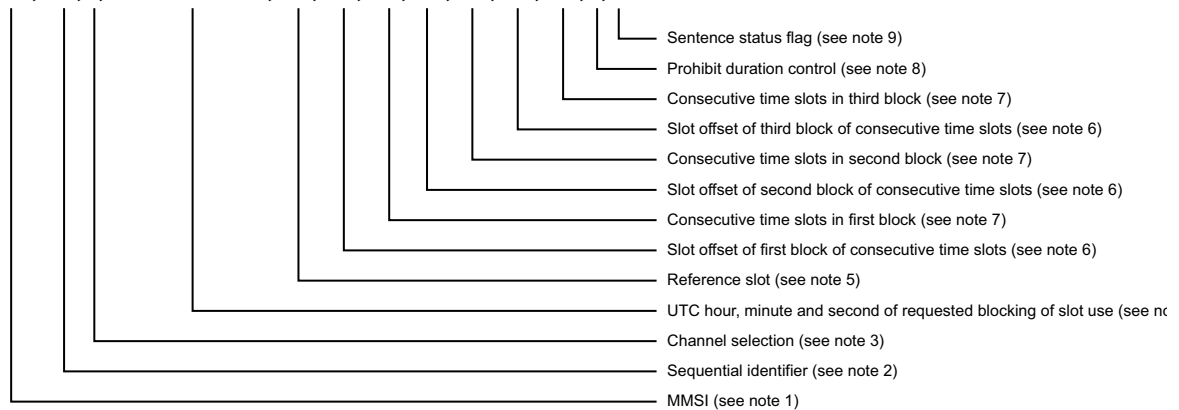
Note 2 0 = use AAR definition,
1 = use next available slot.

- Note 3 This field is used to indicate a sentence that is a status report of current settings or a configuration command changing settings. This field should not be null.
 "R" = sentence is a query response,
 "C" = sentence is a configuration command to change settings.

10.2.10TSP - Transmit slot prohibit

This sentence is used to prohibit an AIS station from transmitting in the specified slots. The AIS Station receiving this sentence should not use the next occurrence of the indicated slots. This sentence is designed to be used to protect interrogation responses from interference from Base Station transmissions and for use with AtoN Stations. For an AtoN Station the Unique Identifier is the AtoN Station Real MMSI.

\$--TSP,c--c,x.x,x,HHMMSS.SS,x.x,x.x,x.x,x.x,x.x,x.x,x.x,a*hh<CR><LF>

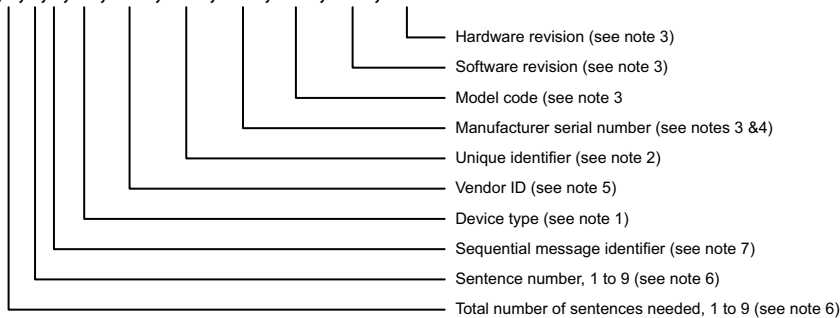


- Note 1 The MMSI is defined in the AID sentence and is the MMSI of the Real AtoN.
- Note 2 The sequential identifier provides an identification number from 0 to 99 that is sequentially assigned and is incremented for each new TSP sentence. The count resets to 0 after 99 is used. This sequential identifier is used to identify the Base Station's response to this TSP-sentence when it replies with a slot prohibit status report (see TSR-sentence).
- Note 3 1 = Channel 1,
2 = Channel 2.
- Note 4 This is for record keeping. It contains the hour, minute, and second of this request.
- Note 5 This is the slot from which the following slot offsets are referenced.
- Note 6 Slot offset of the first slot in the block of slots to be blocked from use by the Base Station.
0 indicates no prohibited slots.
- Note 7 Total number of consecutive slots to be blocked from use by the Base Station. The first slot of the block is also part of the count. Therefore, the minimum value is 1.
1-5 = number of prohibited slots.
- Note 8 This field is used to control the prohibited slots. This field should not be null.
C = immediately restore for use all slots currently prohibited from use,
E = the slot prohibition expires for the slots identified in this sentence after their next occurrence,
P = prohibit the use of slots identified in this sentence. Slots are restored for use using "C" or "R",
R = restore the use of slots identified in this sentence.
- Note 9 This field is used to indicate a sentence that is a status report of current settings or a configuration command changing settings. This field should not be null.
"R" = sentence is a query response,
"C" = sentence is a configuration command to change settings.

10.2.11VER - Version

This sentence is used to provide identification and version information about a talker device. This sentence is produced either as a reply to a query sentence. The contents of the data fields, except for the unique identifier, should be manufactured into the talker device. The unique identifier is the AtoN Station Real MMSI. In order to meet the 79-character requirement, a "multi-sentence message" may be needed to convey all the data fields.

\$--VER,x,x,x,aa,c--c,c--c,c--c,c--c,c--c*hh<CR><LF>



- Note 1** The device type is used to identify the manufactured purpose of the device. Choice of the device type identifier is based upon the designed purpose of the device. It is set into the equipment based upon the primary design of the device and remains constant even if the user defined talker identifier feature is used (see BCF-sentence). For AIS device types, use one of the following talker identifier mnemonics:
 AB: independent AIS Base Station;
 AD: dependent AIS Base Station;
 AI: mobile class A or B (see IEC 61993-2 and IEC 62287-1) AIS station;
 AL: limited AIS Base Station;
 AN: AIS aids to navigation station;
 AR: AIS receiving station;
 AS: AIS physical shore station;
 AT: AIS transmitting station;
 AX: AIS simplex repeater station;
 DU: duplex repeater station;
 UP: microprocessor controller;
 U#: (0 ≤ # ≤ 9) user configured talker identifier.
- Note 2** The unique identifier is used for system level identification of a station, 15 alphanumeric character maximum. For an AtoN Station, this is the Real AtoN MMSI number.
- Note 3** The data field length may be 32 characters maximum. The length of 32 characters is chosen in order to be consistent with similar data field lengths in the IEC 61162 standard. When large character lengths are used and the 80 character sentence limit would be exceeded for a single sentence, a series of successive VER sentences should be used to avoid the problem (using data fields 1 and 2 to ensure the multiple VER sentences are properly associated by the listener). Null fields can be used for data fields contained in other sentences of the series. Every VER sentence shall contain the unique identifier.
- Note 4** The manufacturer's serial number for the unit. Note, this "internal" manufacturer's serial number may or may not match the physical serial number of the device.
- Note 5** Vendor identification.
- Note 6** Depending on the number of characters in each data field, it may be necessary to use a "multi-sentence message" to convey a "VER reply." The first data field specifies the total number of sentences needed, minimum value 1. The second data field identifies the sentence number, minimum value 1.
- Note 7** The third data field provides the sequential message identifier. The sequential message identifier provides a message identification number from 0 to 9 that is sequentially assigned and is incremented for each new multi-sentence message. The count resets to 0 after 9 is used. For a VER reply requiring multiple sentences, each sentence of the message contains the same sequential message identification number. It is used to identify the sentences containing portions of the same VER reply. This allows for the possibility that other sentences might be interleaved with the VER reply that, taken collectively, contain a single VER reply. This data field may be a null field for VER replies that fit into one sentence.

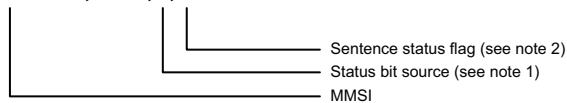
10.3 Proprietary configuration sentences

The following section documents the proprietary NMEA0183/IEC61162 sentences used for AIS AtoN configuration and control. These sentence relate mainly to configuration of data capture and integration with external equipment.

10.3.1 Status Bit Source

The MCR SBS command is used to set the source for the AtoN status bits which are transmitted in AIS AtoN position reports (message #21). Refer to sections 6.1.1 and 6.1.3 for further information on the available interfaces for status information.

\$--MCR,xxxxxxxx,SBS,x,a*hh<CR><LF>



Note 1 Status bit source is either:

0 = ACE sentence provides status bits

1 = Transceiver basic IO connections provide status bits

2 = Extended sensor interface provides status bits (applies only to variants including the extended

Note 2 This field is used to indicate a sentence that is a status report of current settings or a configuration command changing settings. This field should not be null.

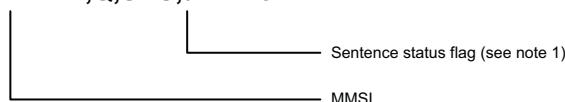
"R" = sentence is a query response,

"C" = sentence is a configuration command to change settings.

10.3.2 Status Bit Source Query

This command issued to query the transceiver for the current Status Bit Source configuration. The response will be in the format described in 10.3.1.

\$--MCR,xxxxxxxx,Q,SBS,a*hh<CR><LF>



Note 1 This field is used to indicate a sentence that is a status report of current settings or a configuration command changing settings. This field should not be null.

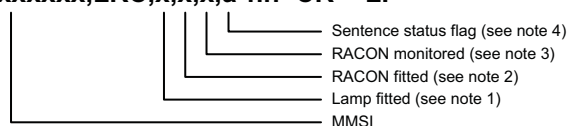
"R" = sentence is a query response,

"C" = sentence is a configuration command to change settings.

10.3.3 Lamp / RACON configuration

The MCR LRC command is used to configure the fixed status of a connected Lamp and / or RACON. This affects the setting of the related status bits transmitted in message #21.

\$--MCR,xxxxxxxx,LRC,x,x,x,a*hh<CR><LF>



Note 1 Set the lamp fitted status, 1 = lamp fitted, 0 = lamp not fitted

Note 2 Set the RACON fitted status, 1 = RACON fitted, 0 = RACON not fitted

Note 3 Set the RACON monitored status, 1 = RACON monitored, 0 = RACON not monitored

Note 4 This field is used to indicate a sentence that is a status report of current settings or a configuration command changing settings. This field should not be null.

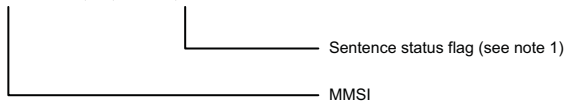
"R" = sentence is a query response,

"C" = sentence is a configuration command to change settings.

10.3.4 Lamp / RACON configuration query

This command issued to query the transceiver for the current Lamp / RACON configuration. The response will be in the format described in 10.3.3.

\$--MCR,xxxxxxxx,Q,LRC,a*hh<CR><LF>



Note 1 This field is used to indicate a sentence that is a status report of current settings or a configuration command changing settings. This field should not be null.
 "R" = sentence is a query response,
 "C" = sentence is a configuration command to change settings.

10.3.5 General MCR query

\$---Q,MCR*hh

This query command will return all the MCR commands as used for direct transceiver configuration.

A general query for MCR using \$--Q,MCR will also return ACQ (Acquisition Configuration) information for all messages. This is used as part of the configuration of a complete AtoN that includes a sensor module; the information within the ACQ details the acquisition time the sensor module needs from the transceiver before a transmission is going to take place, thus allowing the sensor module sufficient time to collect and average data as required for a transmission.

When the AIS Transceiver is not configured with a sensor module the ACQ data is not required but will still get displayed when queried.

11 Technical specification

11.1 Applicable equipment standards

IEC62320-2 Edition 1.0, 2008	Maritime navigation and radiocommunication equipment and systems – Automatic identification system (AIS) – Part 2: AIS AtoN Stations – Operational and performance requirements, methods of testing and required test results
ITU-R M.1371-4 April 2010	Technical characteristics for an automatic identification system using time-division multiple access in the VHF maritime mobile band
IEC61162-1 Edition 4.0, 2010	Maritime navigation and radiocommunication equipment and systems – Digital interfaces – Part 1: Single talker and multiple listeners
IEC61162-2 Edition 1.0, 1998	Maritime navigation and radiocommunication equipment and systems – Digital interfaces – Part 2: Single talker and multiple listeners, high-speed transmission
IEC61108-1 Edition 1.0, 2002	Global Navigation Satellite Systems (GNSS) –Part 1: Global positioning system (GPS) - Receiver equipment - Performance standards, methods of testing and required test results
IEC60945 2002	Maritime navigation and radiocommunication equipment and systems – General requirements – Methods of testing and required test results
SDI-12 Version 1.3, 2009	A Serial-Digital Interface Standard for Microprocessor-Based Sensors

11.2 AIS Transceiver specification

11.2.1 Physical

Transceiver dimensions	288mm (height) x 180mm (maximum diameter), excluding bird deterrent. See also section 11.4.
Transceiver weight	1.3Kg excluding mounting bracket, cables and accessories.

11.2.2 Environmental

Operating temperature range	-25°C to +55°C
Water ingress rating (enclosure)	IPx6 and IPx7
Water ingress rating (power and data connectors)	IPx6 and IPx7 when mated or capped
Water ingress rating (RF connectors)	IPx6 and IPx7 when mated

11.2.3 Electrical

Nominal supply voltage	12 to 24VDC
Absolute min and max supply voltages	10 to 32VDC
Power consumption at 12VDC supply	Type 1 (FATDMA) with message #21 transmission every 3 minutes, 0.1Ah/day Type 3 (RATDMA) with message #21 transmission every 3 minutes, 1.0AH/day

11.2.4 GPS

Receiver channels	50
Time to first fix (cold start)	<36 seconds
Frequency	L1 band, 1575.42MHz
Accuracy	2.5m CEP / 5.0m SEP without differential correction 2.0m CEP / 3.0m SEP with SBAS or RTCM DGPS correction
Antenna requirement	Internal antenna or active external antenna (3.3V bias) with gain >20dB

11.2.5 TDMA transmitter

Frequency range	156.025MHz to 162.025MHz
Channel bandwidth	25kHz
Output power	Configurable 1W, 2W, 5W or 12.5W
Data transmission rate	9600 bits/s
Modulation mode	25kHz GMSK

11.2.6 TDMA receivers

Number of receivers	2
Frequency range	156.025MHz to 162.025MHz
Channel bandwidth	25kHz
Sensitivity	<-107dBm for 20% PER
Modulation mode	25kHz GMSK
Adjacent channel sensitivity	70dB
Spurious response rejection	70dB

11.2.7 Supported AIS messages (transmission)

Message #6	Binary data for addressed communication
Message #8	Binary data for broadcast communication
Message #12	Safety related data for addressed communication
Message #14	Safety related data for broadcast communication

Message #21	Position and status report for aids-to-navigation
Message #25	Short unscheduled binary data transmission (Broadcast or addressed)
Message #26	Scheduled binary data transmission (Broadcast or addressed)

11.2.8 Connector types

Power and basic transceiver interfaces	Selwyn Electronics 24024525-02-RC
Extended sensor interfaces 1	Selwyn Electronics 23018525-02-RC
Extended sensor interfaces 2	Selwyn Electronics 23018525-02-RC
VHF antenna	Female N-type coaxial connector
External GPS antenna	Female TNC type coaxial connector
Ground stud	M5 threaded stud

11.2.9 Transceiver data interfaces

USB	USB interface for configuration and diagnostics
NMEA0183 / IEC61162 / RS422	1x bi-directional RS422 level interface carrying IEC61162 sentences for configuration, diagnostics and sensor data interface (receiver optically isolated)
Non-isolated digital I/O	6x 3.3V logic level I/O signals, Inputs 0 – 3 mapped to AtoN status bits in message #21.

11.2.10 Extended sensor interface specification **T1+S** **T3+S**

USB	USB interface for configuration and diagnostics
RS232	Two RS232 level interfaces for connection of external equipment*
NMEA0183 / IEC61162 / RS422	One fully optically isolated RS422 level interface for connection of external equipment
SDI-12	One SDI-12 compliant interface for connection of external sensors supporting the SDI-12 protocol*
Non-isolated digital I/O	5x non-isolated logic level I/O signals (3.3V logic levels)
Isolated digital inputs	5x optically isolated digital inputs, sensitivity 2.5V, max input voltage $\pm 15V$.
Isolated analogue inputs	Two isolated analogue inputs. Range $\pm 13.75V$, 16 bit resolution.
Non-isolated analogue inputs	Three non-isolated analogue inputs. Range $\pm 37.2V$, 12 bit resolution.
Current sense loop	Lamp current sense loop, max 5A. Measurement of currents up to 0.5A with 12bit resolution.
Relay drive	2x relay driver outputs, max load 200mA at 60VDC.

*Only one RS232 port is available when the SDI-12 interface is enabled.

11.3 Configuration interface specification

The transceiver is configured via a USB interface and compatible Virtual COM Port (VCP) driver. One VCP is created for the transceiver configuration interface and a second VCP for the extended sensor interface configuration port (if the extended sensor interface is present). A USB configuration cable is available from SRT.

All configuration is performed via the USB VCP using the standardised and proprietary IEC61162 sentences defined in section 10.2.

11.4 Drawings and dimensions

AWAITING DRAWING

Figure 24 Transceiver dimensions

12 Firmware upgrade procedure **T1** **T1+S** **T3** **T3+S**

The transceiver firmware can be updated should a new version be made available. The firmware update is transferred to the transceiver using the USB interface. The pre-requisites for carrying out a firmware update are:

- AIS AtoN Transceiver, connected to a 12 or 24V power supply. The power supply must not be interrupted during the software update.
- The USB configuration cable
- A PC running Windows (XP, Vista, Windows 7) with a spare USB port
- Prior installation of the USB driver for the AIS AtoN transceiver.
- A software update file for the AIS AtoN transceiver (available from your supplier)
- The 'vxsend' PC software update utility (available from your supplier)

To update the firmware carry out the following steps:

1. Apply power to the transceiver and connect the USB configuration cable to the transceiver and PC
2. Install and run the 'vxsend' utility (screenshot shown in Figure 25)
3. Click the Browse (...) button for the Image file, then navigate to and select the appropriate update file.
4. Select the COM port assigned to the AIS AtoN port or AIS AtoN Sensor port, depending on which element is being updated. Select the 115200 baud rate option
5. Click 'Start' and wait for the update to complete. Notification is given when the update has completed successfully.
6. Power cycle the transceiver and confirm normal operation before it is deployed.

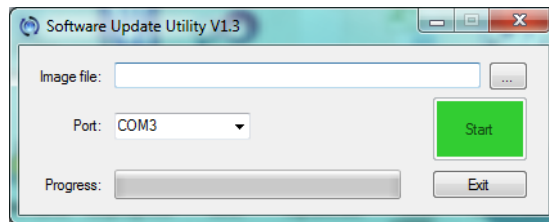


Figure 25 vxsend utility screenshot

