



TVAC16010C



US	User guide
FR	Notice d'utilisation
PT	Manual de instruções
ES	Manual de instrucciones

For more information and additional FAQ's please visit us on the world wide web at : www.abus.com/plug-and-play

English

This user manual contains important information for the installation and operation of the TVAC16010C Home Surveillance Camera. Please take special care to store this manual for future reference.

A list of contents with the corresponding page number can be found in the index on **page 9**.

Français

Cette notice d'utilisation comporte des informations importantes pour l'installation et la commande de la caméra de surveillance du domicile TVAC16010C. Veuillez conserver ce manuel pour une utilisation ultérieure.

Vous trouverez le récapitulatif des indications du contenu à la table des matières avec mention de la page correspondante à la **page 21**.

Português

Este manual de instruções contém informação importante sobre a instalação e funcionamento da Câmara para Sistema de Vigilância Doméstica TVAC16010C. Por favor, tenha o cuidado de guardar este manual para consulta futura.

Uma lista de conteúdos com o respetivo número de página pode ser consultada no índice na **página 33**.

Español

Este mManual de instrucciones contiene información importante para la instalación y el uso de la cámara de vigilancia doméstica TVAC16010C. Asegúrese de guardar este manual para futuras consultas.

En el índice de la **página 45** encontrará un listado de los contenidos con las páginas donde podrá consultarlos.



TVAC16010C

IR wireless outdoor camera, 2.4 GHz

User manual

Version 04/2014

*Original user guide in English.
Retain for future reference.*



Introduction

Dear Customer,

Thank you for purchasing the ABUS TVAC16010C Home Surveillance System Camera.

To ensure optimum performance and condition of this system is maintained, please read carefully the enclosed operating manual.

This operating manual is meant to guide you through the process of operating the TVAC16010C Home Surveillance System Camera. This manual contains instructions for the system's set up/installation, maintenance and relevant safety information.

In the event you have questions regarding the system, installation or operating procedures please consult your local authorized dealer or our customer service team.

ABUS USA, LLC surveillance products are not manufactured and/or sold with the intent to be used for illegal purposes. ABUS USA, LLC expects consumer's use of these products to be in compliance with local, state and federal law. For further information on video and audio recording legal requirements, please consult your local, state and federal law.

Thank you,

ABUS USA, LLC



Data storage is subject to national data privacy guidelines.



Disclaimer

This user guide has been produced with the greatest of care. Should you discover any missing information or inaccuracies, please contact us under the address shown on the back of the manual.




ABUS USA, LLC does not accept any liability for technical and typographical errors, and reserves the right to make changes to the product and user guide at any time and without prior warning.

ABUS USA, LLC is not liable or responsible for direct or indirect damage resulting from the equipment, performance and use of this product. No forms of guarantee are accepted for the contents of this document.



ABUS USA LLC. products are not manufactured and/or sold with the intent to be used for illegal purposes. ABUS USA LLC. expects consumer's use of these products to be in compliance with all local, state and federal law. For further information on video surveillance and audio recording legal requirements, please consult your local, state and federal law.

© 2014, All rights allowed by law are hereby reserved.

Icon explanation

	A flash in the triangle is used if there is danger for the health, e.g. by an electric shock.
	This triangular with the exclamation mark warning symbol indicates important notes in the operating instructions which should be observed.
	This symbol indicates special information bulletins and notes on the operation of the unit.

Important safety advice

	All warranty claims are invalid in the event of damage caused by operating the system in non-compliance with this user guide. ABUS USA LLC cannot be held liable for resulting damages.
	In the event of material or personal damage caused by improper operation or non-compliance with the safety information, we cannot be held liable. All warranty claims are voided in such cases.

The device has been manufactured in compliance with international safety standards. Please read these safety advices carefully.

Safety advice

1. Mains supply
110 V AC voltage, 60 Hz (using a power supply unit for 5 V DC)
Operate this product only from the type of power supply indicated on the marking label. If you are not sure of the type of power supplied to your home, consult your local power company. Disconnect the product from the mains before you start any maintenance or installation procedures. The power supplies are only for indoor usage.
2. Overloading
Do not overload a wall outlet, extension cord or adapter as this may result in electric fire or shock.
3. Liquids
Protect the device from any kind of liquids entering.
4. Cleaning
Disconnect the product from the wall outlet before cleaning. Use a light damp cloth (no solvents) to dust the product.
5. Accessories
Do not use any unsupported accessories as these may be hazardous or cause damage the product.
6. Location
 - This device can be used in inside as well as outside.
 - The product will be damaged even it falls from a low height.
 - During the installation of the camera please take care that direct sunlight cannot fall onto the image sensor of the device. Please follow the installation instructions in the corresponding chapter of this user manual.
 - Do not place the device near a radiator or heat register.
 - Only operate the device at locations where temperatures within the permitted ambient temperature range of 14 °F to 122 °F prevail. Outside the predetermined temperature range operation is possible, but cannot be guaranteed.

7. Wireless transmission

The wireless range depends on a variety of environmental factors. The local conditions at the installation site may have a negative impact on the range. When there are no obstructions between the receiver and transmitter, a range of up to 325 feet is possible, but this range will be considerably less within buildings. The following environmental conditions compromise both the range as well as the frame rate:

Mobile communication towers, high-tension pylons, electrical wires, ceilings and walls, devices with the same or an adjacent wireless frequency.



Disclaimer

ABUS USA LLC. products are not manufactured and/or sold with the intent to be used for illegal purposes. ABUS USA LLC. expects consumer's use of these products to be in compliance with all local, state and federal law. For further information on video surveillance and audio recording legal requirements, please consult your local, state and federal law. It is your responsibility to be aware of the local, state and federal regulations regarding image storage and use.

Warnings

Follow all safety and operating advises before starting-up the device!

1. Follow these directions in order to avoid damage of the power cord or plug:
 - Do not modify or process the power cord or plug arbitrarily.
 - Make sure to disconnect the power cord holding the plug.
 - Keep heating appliances as far as possible from the power cord in order to prevent the cover vinyl from melting.
 - The outdoor camera's power supply unit must be protected against humidity and damp. It is only for indoor usage.
2. Follow these directions. Failure to follow any of them may cause electrical shock:
 - Do not open the main body or the power supply.
 - Do not insert metal or inflammable objects inside the product.
 - In order to avoid any damage during lighting use a surge protection.
3. Do not use the product when it is out of order. If you continue to use the product when defective, serious damage can be caused to it. Make sure to contact your local product distributor if the product is out of order.



During the installation into an existing video surveillance system make sure that all devices are disconnected from the low and supply voltage circuit.



If in doubt allow a professional electrician to mount, install and wire-up your device. Improper electrical connection to the mains does not only represent a threat to you but also to other persons.
Wire-up the entire system making sure that the mains and low voltage circuit remain separated and cannot come into contact with each other in normal use or due to any malfunctioning.

Avoid using the device under the following unfavorable ambient conditions:

- moisture or excessive air humidity
- extreme cold or heat
- direct sunlight
- dust or combustible gases, vapors or solvents
- strong vibration
- strong magnetic fields, such as those found in the vicinity of machinery or loudspeakers
- the camera must not be directed into the sun as this can destroy the sensor.
- the camera may not be installed on unstable surfaces

Unpacking

While you are unpacking the device please handle it with utmost care.



If you notice any damage of the original packaging, please check at first the device.
If the device shows damages, please contact your local dealer.

FCC Compliance Information

Part 15 Compliance Statement

This device complies with Part 15 of the FCC Rules. Operation is subjected to the following two conditions: (1) this device may not cause harmful interference, and (2) this device must accept any interference received, including interference that may cause undesired operation.

This equipment has been tested and found to comply with limits for a Class B digital device, pursuant to Part 15 of the FCC rules and ETSI (EN) 300328. These limits are designed to provide reasonable protection against harmful interference in residential installations. This equipment generates, uses, and can radiate radio frequency energy, and if not installed and used in accordance with the instructions, may cause harmful interference to radio communications.

However, there is no guarantee that interference will not occur in a particular installation. If this equipment does cause interference to radio or television equipment reception, which can be determined by turning the equipment off and on, the user is encouraged to try to correct the interference by one or more of the following measures:

- Reorient or relocate the receiving antenna.
- Move the equipment away from the receiver.
- Plug the equipment into an outlet on a circuit different from that to which the receiver is connected.
- Consult the dealer or an experienced radio/television technician for additional suggestions.

CAUTION! Any changes or modifications to this equipment not expressly approved by the party responsible for compliance could void your authority to operate the equipment.

RF Exposure Information

The antenna used for this transmitter must be installed to provide a separation distance of at least 20 cm (7.9") from all persons and must not be collocated or operating in conjunction with any other antenna or transmitter.

All declarations and certificates of conformity can be ordered from:

ABUS USA LLC
23910 N. 19th Ave.
Unit #56
Phoenix, AZ 85085-1850
Ph.: 1-623-516-9933
Mail: customerservice@us.abus.com

One-year Limited Warranty

Important: Evidence of original purchase is required for warranty service.

WARRANTOR:

ABUS USA LLC

ELEMENTS OF WARRANTY:

ABUS USA LLC warrants, for one year, to the original retail owner, this ABUS Product to be free from defects in materials & craftsmanship with only the limitations or exclusions set out below.

WARRANTY DURATION:

This warranty to the original user shall terminate & be of no further effect 12 months after the date of original retail sale. The warranty is invalid if the Product is (A) damaged or not maintained as reasonable or necessary, (B) modified, altered, or used as part of any conversion kits, subassemblies, or any configurations not sold by ABUS USA LLC, (C) improperly installed, (D) serviced or repaired by someone other than an authorized ABUS service center for a defect or malfunction covered by this warranty, (E) used in any conjunction with equipment or parts or as part of any system not manufactured by ABUS, or (F) installed or programmed by anyone other than as detailed by the owner's manual for this product.

STATEMENT OF REMEDY:

In the event that the product does not conform to this warranty at any time while this warranty is in effect, warrantor will either, at its option, repair or replace the defective unit & return it to you without charge for parts, service, or any other cost (except shipping & handling) incurred by warrantor or its representatives in connection with the performance of this warranty. Warrantor, at its option, may replace the unit with a new or refurbished unit. THE LIMITED WARRANTY SET FORTH ABOVE IS THE SOLE & ENTIRE WARRANTY PERTAINING TO THE PRODUCT & IS IN LIEU OF & EXCLUDES ALL OTHER WARRANTIES OF ANY NATURE WHATSOEVER, WHETHER EXPRESSED, IMPLIED OR ARISING BY OPERATION OF LAW, INCLUDING, BUT NOT LIMITED TO ANY IMPLIED WARRANTIES OF MERCHANTABILITY OR FITNESS FOR A PARTICULAR PURPOSE. THIS WARRANTY DOES NOT COVER OR PROVIDE FOR THE REIMBURSEMENT OR PAYMENT OF INCIDENTAL OR CONSEQUENTIAL DAMAGES. Some states do not allow this exclusion or limitation of incidental or consequential damages so the above limitation or exclusion may not apply to you.

LEGAL REMEDIES:

This warranty gives you specific legal rights, & you may also have other rights which vary from state to state. This warranty is void outside the United States of America & Canada.

PROCEDURE FOR OBTAINING PERFORMANCE OF WARRANTY:

If, after following the instructions in the owner's manual you are certain that the Product is defective, pack the Product carefully (preferably in its original packaging). Disconnect the battery from the Product & separately secure the battery in its own separate packaging within the shipping carton. The Product should include all parts & accessories originally packaged with the Product. Include evidence of original purchase & a note describing the defect that has caused you to return it.

The Product should be shipped freight prepaid, by traceable means, to warrantor at:

ABUS USA LLC
23910 N. 19th Ave.
Unit #56
Phoenix, AZ 85085-1850
Ph.: 1-623-516-9933
Mail: customerservice@us.abus.com
Website: www.abus.com/us

(See www.abus.com for current hours of operation.)

Table of contents

1. Intended Use	10
2. Scope of delivery	10
3. Features and functions	10
4. Description of device	10
4.1 Overview	10
4.2 Camera description	11
5. Installation.....	11
5.1 Pairing the camera and monitor	11
5.2 Installing the camera	12
6. Maintenance and cleaning.....	13
6.1 Maintenance.....	13
6.2 Cleaning	13
7. Disposal.....	13
8. Technical data.....	14

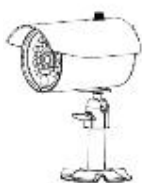
1. Intended Use

This 2.4 GHz IR wireless outdoor camera is an optional accessory for the 7" wireless monitor (TVAC16000C). You have the option of connecting up to 4 cameras to the monitor. You can use this 2.4 GHz IR wireless outdoor camera for easy wireless transmission of video signals to the wireless monitor.

Wireless signal transmission is an advantage in all locations where cables cannot be laid: the camera transmits the video signal to the monitor without the need for wires. Faults and interference can be avoided due to the conversion into digital signals.

A detailed function description can be found in chapter 3 ("Description and functions").

2. Scope of delivery



1x IR wireless external 2.4 GHz camera,
including camera mount and
installation material



1x Power supply unit



1x Antenna

3. Features and functions

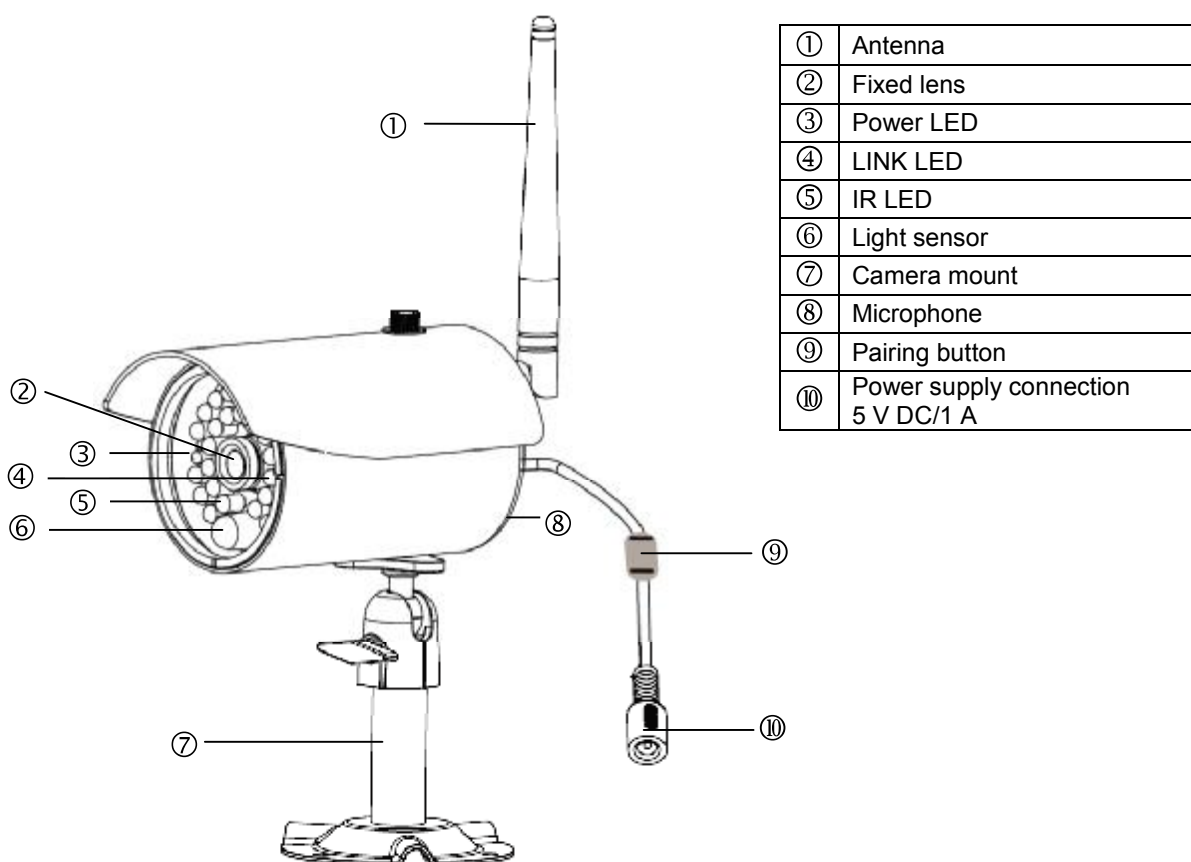
- Compact IP66 outdoor camera with infrared night vision function
- Integrated digital 2.4 GHz transmitter for encrypted wireless video data transmission
- IR digital wireless outdoor camera for integrating in TVAC16000B wireless monitor
- 640 x 480 pixel resolution, 3.6 mm fixed lens

4. Description of device

4.1 Overview

Item number	TVAC16010C
Resolution	640 x 480 pixel
IR	✓
IR cut filter (ICR)	✓
Operating voltage	5VDC

4.2 Camera description



5. Installation

5.1 Pairing the camera and monitor

To connect a camera with the monitor, proceed as follows:

1. Connect the power supply to the cameras and monitor.
2. In the monitor's menu "Camera Setup" > "Pairing" select the camera you require (1–4). The system starts a 60 second countdown.
3. During the 60 seconds, press the PAIRING button on the camera cable until the green LINK LED on the front of the camera starts to flash.
4. Once the connection is successful, the LINK LED on the camera lights up continuously.



Warning:

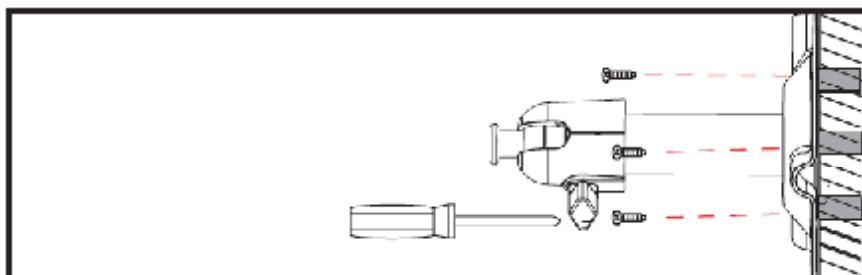
Please note that connection can take up to 60 seconds.

5.2 Installing the camera

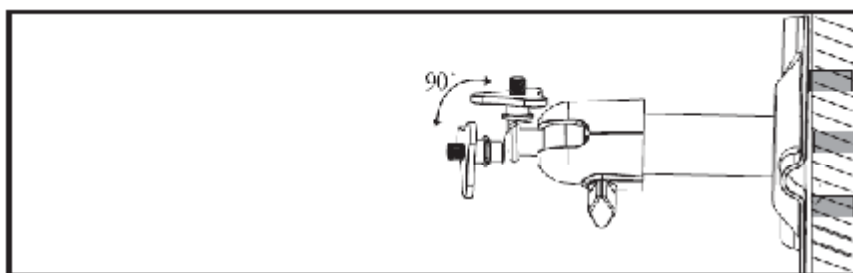
Select a suitable place for installing the camera using the camera mount. Mark the drill holes on the base and pre-drill them. Insert the wall plugs provided and attach the mount with the screws.

**Warning:**

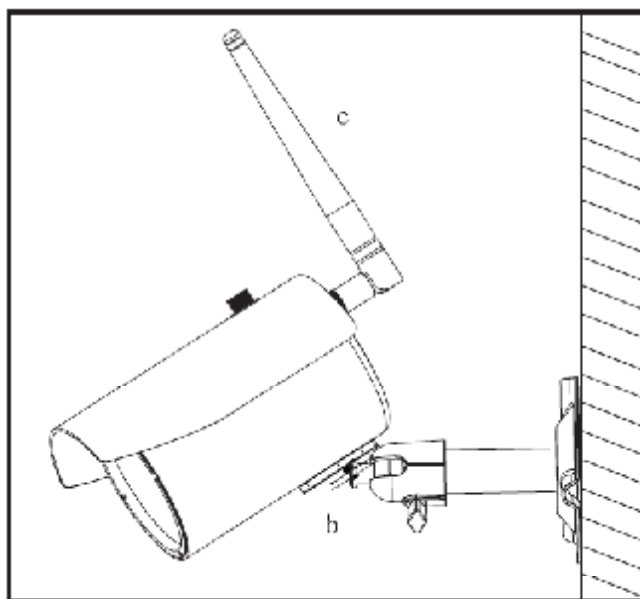
Before you start with the installation, make sure that the wireless transmission range reaches your desired installation location.



You now have the option of swivelling the mount by 90° to position it where you want it. Loosen the screw at the side and set the angle of view required. Then tighten the screw in the required position to fasten.



Then screw the camera onto the mount and the power supply unit with the camera.



6. Maintenance and cleaning

6.1 Maintenance

Regularly check the product's physical state, e.g. check for damage of the housing.

If you suspect that safe operation cannot be guaranteed anymore, disconnect the product and ensure that it cannot be used by mistake.

You can assume that safe operation is not possible anymore when

- The device shows visible damage.
- The device does not function anymore.



Please note:

The product is maintenance free. Inside the product are no parts that can be checked or adjusted. Please do not open the housing or attempt to modify this product in anyway.

6.2 Cleaning

Wipe the product with a clean, dry cloth. If the device is very dirty, you can moisten the cloth with lukewarm water.



Make sure that no liquids can enter the equipment as the device can be destroyed. Never use chemical detergents as they could attack the surface of the device

7. Disposal

Recycling and Disposal Information

- Do not dispose of electronic devices or any of their components (especially batteries and LCD displays) in your municipal trash collection.
- Please recycle batteries to help save our planet's resources. When you throw away dead batteries, be sure to cover their terminals and always observe local laws and regulations.
- Consult your local waste management authority or a recycling organization like Earth911.com to find an electronics recycling facility in your area.
- If you are unable to locate proper recycling facilities in your area, please contact ABUS USA and we will assist you in locating a proper recycling facility in your local area.

8. Technical data

Model number	TVAC16010C
Frequency	2414.25-2461.50MHz
Modulation	GFSK
Sensitivity	-80 dBm
Image sensor	1/4" CMOS
Resolution	640 × 480 pixel (VGA)
No. of IR LEDs	25 IR LEDs
Lens	3.6 mm
Angle of view	60° (H)/43° (V)
Night vision function range	16 – 26 feet
IR swivel filter	Yes
IP protection class	IP66
Wireless range	approx. 325 m (clear sight line)*
Power supply	5 V DC/1 A
Power consumption	Max. 550 mA
Operating temperature	14 °F – 122° F
Dimensions (L × W × H)	150 × 74 × 68 (without antenna and mount)
Weight	390 g
Certifications	FCC

* The range depends on the ambient conditions (e.g. mobile phone towers, high-tension electricity pylons, power lines, ceilings and walls, etc.).
If the conditions are unfavourable, the range may be very restricted.