

1. 제품 개요

The Bikey is smartkey system for motorcycle. It using the wireless authentication between FOB and Controller.

When you engine start, you don't need key any more, If do you have FOB in your pocket, can start engine just push the start button.

Also, It is into auto arming state. So It can be protection from shock, tilt, try abnormal start by theft.

2. Function chart

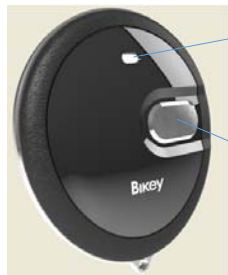
Button Operating

function	condition	button/Operating	status
start normal	FOB within 1.5m	grib on brake, push the start buttonstart button	Engine on after authentication
start Emergency	FOB battery discharge state, FOB within 3cm on ext antenna	grib on brake, push the start buttonstart button	Engine on after authentication
stop (시동ON상태에서)	with stop on motorcycle	using stop button	engine off
	without stop on motorcycle	using start button	engine off
	with side Kick off	side stand	engine off
search(panic)	range min 30m	FOB short click	winker/horn blink 2times
low battery warning	FOB battery voltage low	only warning when engine start	winker/horn fast blink 2times
warning on	abnormal start	push the start button without FOB	winker/horn blink 3times
	shock	shock,tilt detect	winker/horn blink 20times, stop when input the search function
warning off		abnormal start, shock, tilt	not working warning function

warning ON/OFF set

function	condition	button/조작	status
Warning ON	FOB within 30m, warning off state	FOB long click over 2sec	winker/horn blink 1time
Warning OFF	FOB within 30m, warning on state	FOB long click over 2sec	winker/horn blink 2times

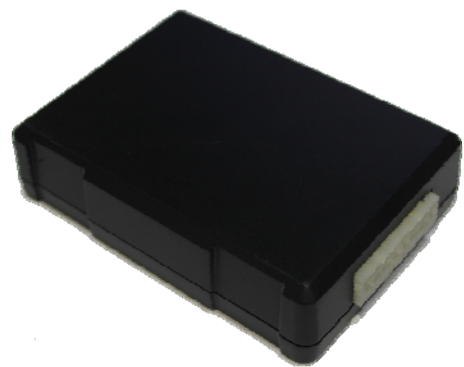
3. Install & Exterior description



State LED
RF transmitter display

Function Button
- Search/Panic : click
- Warning set On/Off : Long click over 2sec

FOB (S-10F)



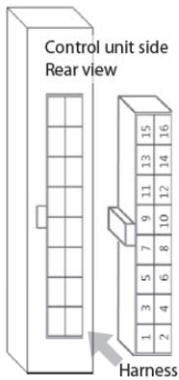
Controller (S-10C)



Cable



EXT_Antenna



No	Wire color	Assign(connecting point)
1	RED	BATTERY +
2	BLACK	GROUND
3	ORANGE	AC Generator
4	WHITE	IGNITION
5	GREEN	HORN 1
6	YELLOW	Start/Stop SWITCH OUT
7	GRAY	HORN 2
8	PURPLE	Start/Stop SWITCH IN
9	LIGHT BLUE	INDICATOR-R
10	BROWN	STARTER RELAY
11	PINK	INDICATOR-L
12	GRAY	No connect (UART-Rx)
13	BLUE	BRAKE signal
14	GREEN	No connect (UART-Tx)
15	BLACK	LF ANT- (connector)
16	WHITE	LF ANT + (connector)