

# Operating Manual of Padcoat Bluetooth Keyboard

- Thank you for using our Bluetooth keyboard. Please read the following instructions before use.



Note: The product may vary from content of this Operating Manual due to changes in future.

➤ Packing list:

- Bluetooth keyboard;
- Fine package;
- Micro USB charging cable;
- Operating Manual

➤ Features:

- As a product customized for iPads, it has special and personalized PU leather design and guarantees compatibility for iPads, making it more convenient to take iPads along and use them horizontally or vertically.

- With a repeatedly chargeable and highly safe polymer lithium battery, it can be used for about 30 days in the normal conditions after one charging.
- Immediate return to the main screen can be realized after a specially designed main screen key on it is gently pressed.
- It can realize gentle and silent key strokes and is dust and water proofing and easy to be cleaned.
- With a power-saving sleep mode, it will enter a sleep status automatically if not used in several minutes and be activated immediately after any key is pressed.
- After a key is pressed, the key light will flicker to make the product respond and send a character.

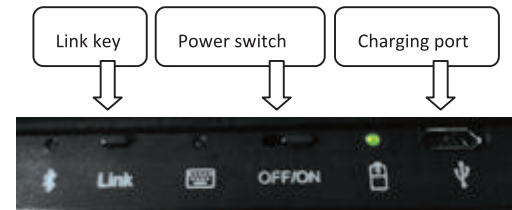
## Bluetooth Keyboard Code and Its Operation

➤ Specifications:

- The chip used complies with the 3.0 interface standard.
- Wireless operating distance of Bluetooth: 10 m
- System mode: GFSK 2.4G
- Transmitting power: Class 2
- Operating voltage : 3- 5V
- Operating current: <6.0mA
- Conventional current: 4.5mA
- Sleep current: <400uA
- Charging current: >100mA
- Normal life after once charging: 30 days
- Continuous operating time: 30 hours
- Life of lithium battery: 2 years
- Specification of lithium battery: 50X37X2.0mm
- Charging time: 3-4 hours
- Capacity of lithium battery: 300 mA/h
- Trigger force of keys: 80 +/- 10g
- Key life: 2 million times
- Ambient temperature: -10℃ - +55℃

➤ Keyboard code:

- Step 1: Turn on the power switch. After that, the key light will flicker for one time and the power light and the code light will remain lit and go out automatically 5 seconds later.
- Step 2: Press key "Link" (code key). After that, the code light will flicker, which suggests that the product is ready for code matching and that code matching can be now done for the iPad.



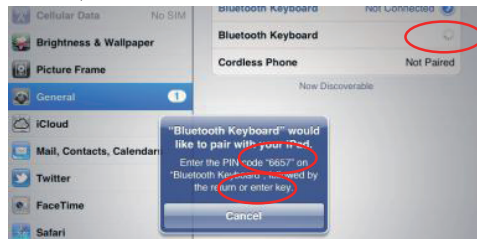
- Step 3: Power on or unlock the iPad and click the setup icon on the main screen to open the setup menu.



- Step 4: Click the “Bluetooth” icon on the next interface. After that, a “Bluetooth” word will appear in the right column. Set it in the ON state. The iPad will then begin to search for a nearby Bluetooth device and wait until a “Bluetooth keyboard” is found (or a Bluetooth is found) (see the figure below).



- Step 5: Click the found keyboard for linking. A dialog box will pop up on the iPad (see the figure below).



- Step 6: Input the same codes (such as “9331”) as that in the dialog box through the keyboard and press Enter (do remember to do this). Upon successful code matching, the dialog box will be closed automatically; the flickering code light on the keyboard will go out and the power light will remain lit.



### Code matching succeeded

#### ➤ Application instructions:

The wireless Bluetooth keyboard can be used for the following products:

1. iPads of the first, second and third generations, iPhone4G, iPod touch and other Apple products with an operating system of iOS4.0 or above.
2. Samsung cell phones, tablet PCs, Motorola cell phones, HTC cell phones and other products with an operating system of Android 2.35 or above (the cell phones and tablet PCs made in China possibly need to install keyboard driver software).
3. Keyboard driver software needs to be installed in the Symbian systems of Nokia smart phones and in the Windos Mobilek systems of HTC cell phones and some Samsung cell phones.

#### ➤ Charging:

When the internal lithium battery of the product is critically low, the power light will begin to flicker to remind the user to charge the product.

1. Insert one end of the USB charging cable into the Micro USB port of the product and the other end into the USB port on the PC or charger.
2. After that, the charging light will begin to remain lit to suggest a charging status of the product. After the lithium battery is fully charged, the charging light will go out automatically.

#### ➤ Power-saving sleep mode:

If the product has not been used for 10 minutes, it will enter a sleep mode automatically and the power light on it will go out. When the product needs to be used again, click any key on it. The product will resume its operating mode 3 seconds later.

#### ➤ Correct use of the product:

- Do not touch it with sharp tools.
- Do not put too heavy articles on it.
- Do not put it in a microwave oven.
- Do not strike other things with it.
- Keep it from oils or corrosive chemicals.
- Do not put it in water (however, it may be cleaned with wet cloth and a little water).

#### ➤ Cleaning:

- The product may be cleaned with a little water and detergent.

#### ➤ Troubleshooting:

##### Linking failure

- Make sure the power switch is in the ON position.
- Make sure there is an effective distance between the product and the object of operation.
- Make sure the lithium battery has sufficient capacity.
- Make sure the object of operation can be linked and has already been started.
- Make sure the product has already linked with the object of operation rather than any other object.

##### Charging failure

- Before charging, make sure a 5VDC power supply is used for charging the product. A 5VDC charger with a USB port or a computer’s USB port may be used for charging.

- Make sure the charging power supply or the computer has been linked with the USB cable.
- Make sure the USB cable has been linked with the charging port of the product.
- The charging light will remain lit in normal charging.

#### ➤ Special keys for iPads:

	Ipads Main Screen		Mute
	Keyboard Switching		Volume/-
	Search		Volume/+
	Command/Main Menu		Last
	Control		Next
	Change		Play/Pause

Switching between different languages can be realized through simultaneous use of keys “command” and “space” at the same time.

Brightness of the screen of an iPad can be adjusted through simultaneous use of keys “Fn” and “<”, or keys “Fn” and “>”.

The product has passed the following international certifications:

U.S.: FCC standard

EU: CE standard

Company: **Hi Glory Electronic Industry (SuZhou) Co. Ltd.**

Name: **Bluetooth Keyboard Cover For Ipad**

Model Number: **For Ipad**



**FCC ID: 2AATEFORIPAD**

This device complies with Part 15 of the FCC Rules. Operation is subject to the following two conditions: (1) this device may not cause harmful interference, and (2) this device must accept any interference received, including interference that may cause undesired operation.

Note: This equipment has been tested and found to comply with the limits for a Class B digital device, pursuant to part 15 of the FCC Rules. These limits are designed to provide reasonable protection against harmful interference in a residential installation. This equipment generates, uses and can radiate radio frequency energy and, if not installed and used in accordance with the instructions, may cause harmful interference to radio communications. However, there is no guarantee that interference will not occur in a particular installation. If this equipment does

cause harmful interference to radio or television reception, which can be determined by turning the equipment off and on, the user is encouraged to try to correct the interference by one or more of the following measures:

- Reorient or relocate the receiving antenna.
- Increase the separation between the equipment and receiver.
- Connect the equipment into an outlet on a circuit different from that to which the receiver is connected.
- Consult the dealer or an experienced radio/TV technician for help.

changes or modifications not expressly approved by the party responsible for compliance could void the user's authority to operate the equipment.