

# EB-310



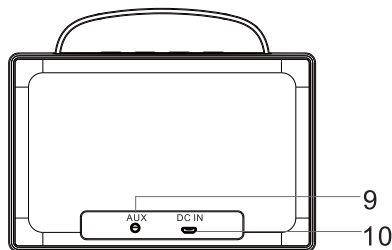
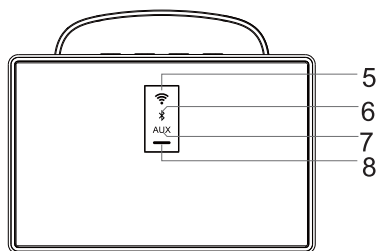
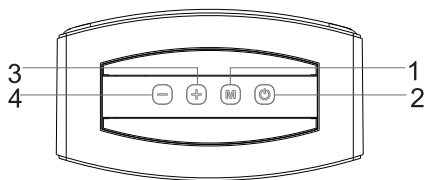
## EB-310 User Manual

Portable WiFi & Bluetooth Streaming Speaker

English

## Wi-Fi Smart Speaker

---



- 1. Power On/Off/Pause/Play
- 2. Mode/WPS/Restore
- 3. Next Track / Volume Up
- 4. Previous Track / Volume Down
- 5. WiFi Indicator

- 7. AUX / Line In Indicator
- 8. Charging Indicator
- 9. AUX IN/ Lock Up Reset
- 10. DC IN Charging Socket

### Getting Started

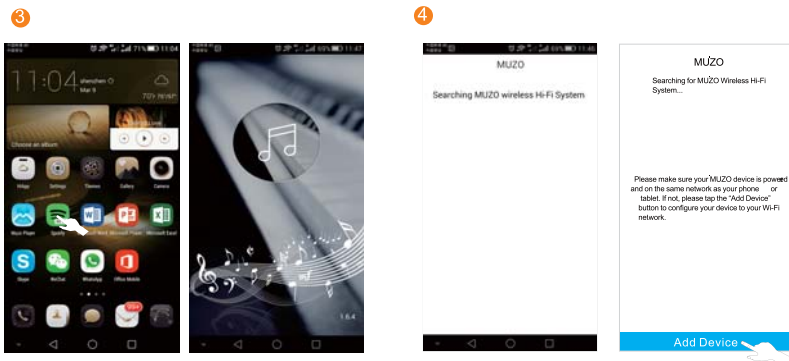
How to stream with router and MUZO app.

1. Search for Muzo Player in APP store and install it



2. Connect the speaker(s) to your wifi network

- 1 Press and hold the power button for 3 seconds to turn on the speaker. You will hear "Power On" and "WiFi mode", and following you will hear 2 tones.
- 2 Go to your cellphone's WLAN setting, choose your intended wifi network and connect with your password.



## Wi-Fi Smart Speaker

- 5 Press and hold the M button for 3 seconds till tone "Searching for Wi-Fi connection" heard.
- 6 Enter the password to your chosen wifi network and press CONNECT.



- 7 While the speaker is being connected to the router, you will hear "Waiting for wifi connection".
- 8 When the speaker successfully connected to wifi router, you will hear "wifi connected", then press FINISH and go for music streaming.

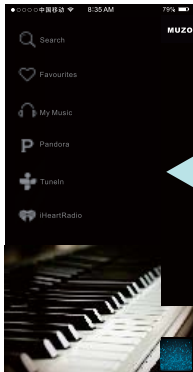


## Wi-Fi Smart Speaker

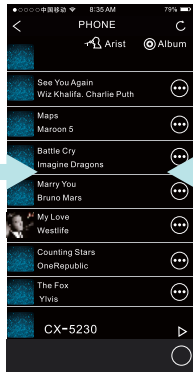
### Get to know the APP Interface

There are three interfaces. Menu, Music List & Player and Device List, you

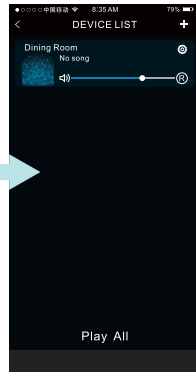
#### 1 Menu;



#### 2 Music list & player;



#### 3 Device List.



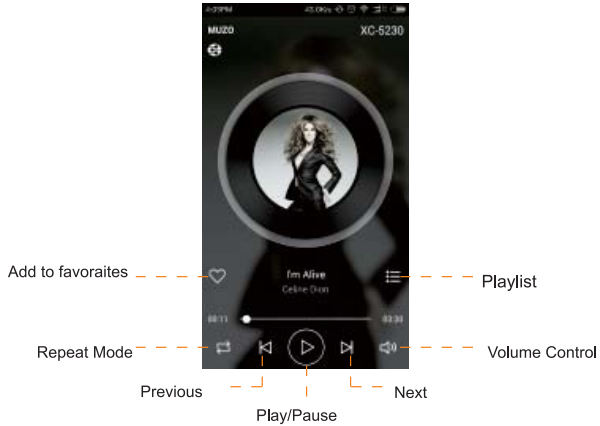
### Menu

- a). Search: search for music
- b). Favorites: your favorite music list.
- c). My Music: It shows music from your local folders, shared music, your playlist and songs recently played.
- d). Pandora
- e). TuneIn
- f). iHeartRadio
- g). Spotify
- h). TIDAL

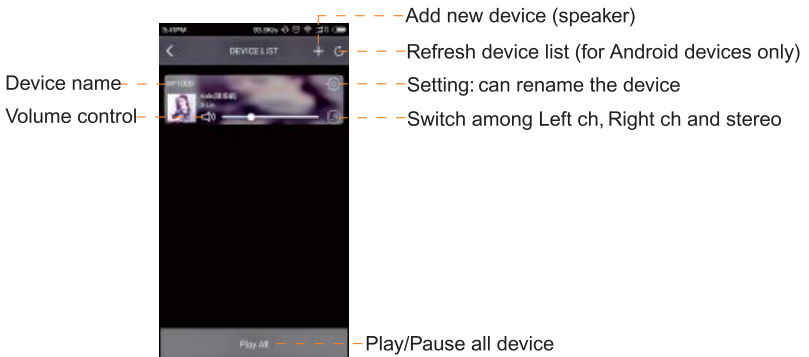
# Wi-Fi Smart Speaker

---

## 2 Player



## 3 Device List

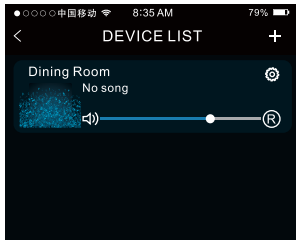


## Wi-Fi Smart Speaker

### Multi-room Function

Add another speaker to the WiFi network

- 1 Press the + icon on the DEVICE LIST page



- 2 Follow steps 5 to 8 of point 2 to add more speakers

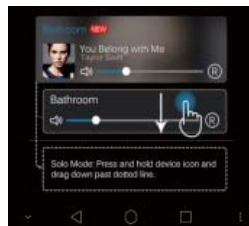


Press the WPS button to configure network



In the DEVICE LIST, you can make the devices play in Multi Mode or Solo Mode.

- a Multi Mode: Make one speaker the master and drag others to join it, all devices in the same group play the same song simultaneously.
- b Solo Mode: Separate the speakers and each one can play different song individually.



### Switch to bluetooth mode under multi-room situation

With many speaker connected to the same network, choose one and make it a master speaker, click M button to change to bluetooth mode and connect your cellphone's bluetooth, play some music from any music APP and it's synced to all the speakers connected.

## Wi-Fi Smart Speaker

---

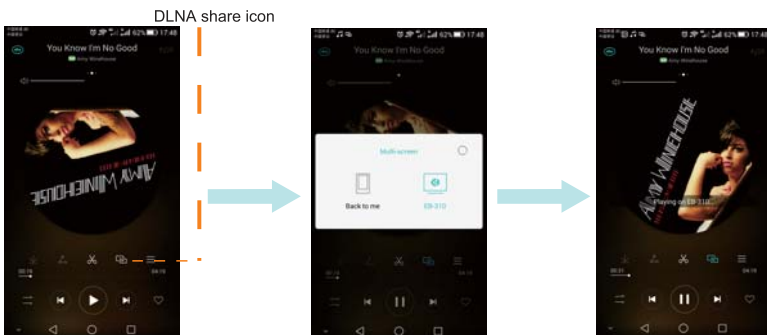
### How to stream music without router

In case there is no router, please use the speaker as an AP(Access Point) and connect your mobile device to the speaker's network directly. When connected, you can play local music through MUZO app or any other APP that supports Airplay, DLNA, UPnP or Spotify Connect.

### Cast music through DLNA

After connecting your mobile device to the speaker, you can play musci by MUZO app or start any other APP supports DLNA. Find the DLNA share icon then choose the cast device EB-310.

Note: DLNA share icon in different music play may vary and some apps require DLNA to be set open state. The icon location may also vary.





## Wi-Fi Smart Speaker

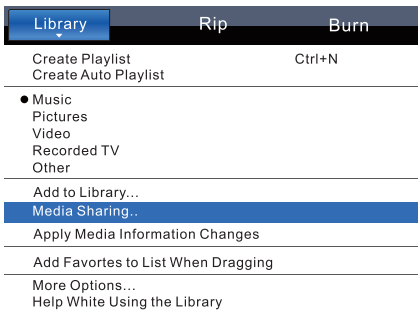
---

### How to connect the Speaker by UPnP from PC

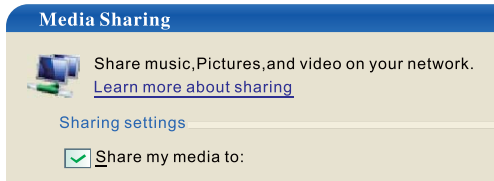
- The speaker must be connected to the same network as your PC.
- For UPnP playback, a UPnP enabled player is required such as WMP, BubbleUPnP, Foobar 2000( upnp add on needed).
- To connect your PC and speaker in the same network, a wireless adapter may be needed is you're using a desktop PC.

Let's take WMP for example.

1. Click the arrow below the Library tab, and then click Media Sharing.



2. In the Media Sharing dialogue box, select the Share my media check box.



## Wi-Fi Smart Speaker

---

### Choose which devices to share your media with

After you turn on media sharing, you need to select the devices that should have access to your Player library.

1. In the list of devices below the Share my media to check box, select a device  
For example, EB-310



2. Do one of the following:

- If you want to share your media with the computer or device you have selected, click Allow. click DENY is you don't want to share.

For information about how to customise what media you share with the device, see "Change settings for sharing media" in Windows Media Player Help.

Note that you can also allow or deny devices by clicking the notification that appears when the Player detects a new device on your network.

### Play shared media


After you have allowed your computers and speaker to access your Player library, you are ready to use your speaker or other computer to select content to play.

Note: Set up may differ depending on DLNA player used.

## Wi-Fi Smart Speaker

---

### Stream music through Bluetooth

You will see the name "EB-310" appear in the device list. Select it to pair, and if a password or PIN is needed enter the numbers "0000". You may have to then select "EB-310" and press "CONNECT". After a successful connection has been made the  icon of (6) LED

### LINE IN function

The tower speaker will enter AUX mode and play the music of player through AUX. If the tower speaker does not enter AUX mode, press the (5) M button to select the AUX mode.

### Trouble Shooting

1. If your smart device is connected to a 5GHz router, the speaker cannot receive the connecting request sent by the smart device. This device operates on 2.4GHz frequency.
2. The router is connected with your smart device by Enterprise WPA which is not supported by the speaker
3. Limitations from the router as follows:
  - A. The router is set to configure static IP.
  - B. The router is set a MAC address restriction, only given addresses can connect to it.
  - C. The router is set as an internal portal, which means after connecting to the router, the smart device will appear a pop-up page automatically or by hand. Users need to enter a password to connect the internet, but, this action is not available for the speaker
4. A restriction set by the IGMP of the router may lead to failing to add device.
5. A bad network environment, long distance from the router and weak signal will lead to failing to add the device.

This device complies with part 15 of the FCC Rules. Operation is subject to the following two conditions: (1) This device may not cause harmful interference, and (2) this device must accept any interference received, including interference that may cause undesired operation.

Any changes or modifications not expressly approved by the party responsible for compliance could void the user's authority to operate the equipment.

NOTE: This equipment has been tested and found to comply with the limits for a Class B digital device, pursuant to Part 15 of the FCC Rules. These limits are designed to provide reasonable protection against harmful interference in a residential installation. This equipment generates, uses and can radiate radio frequency energy and, if not installed and used in accordance with the instructions, may cause harmful interference to radio communications. However, there is no guarantee that interference will not occur in a particular installation.

If this equipment does cause harmful interference to radio or television reception,

which can be determined by turning the equipment off and on, the user is encouraged to try to correct the interference by one or more of the following measures:

- Reorient or relocate the receiving antenna.
- Increase the separation between the equipment and receiver.
- Connect the equipment into an outlet on a circuit different from that to which the receiver is connected.
- Consult the dealer or an experienced radio/TV technician for help.

The device has been evaluated to meet general RF exposure requirement.

The device can be used in portable exposure condition without restriction.

FCC ID: 2AASC-EB310