

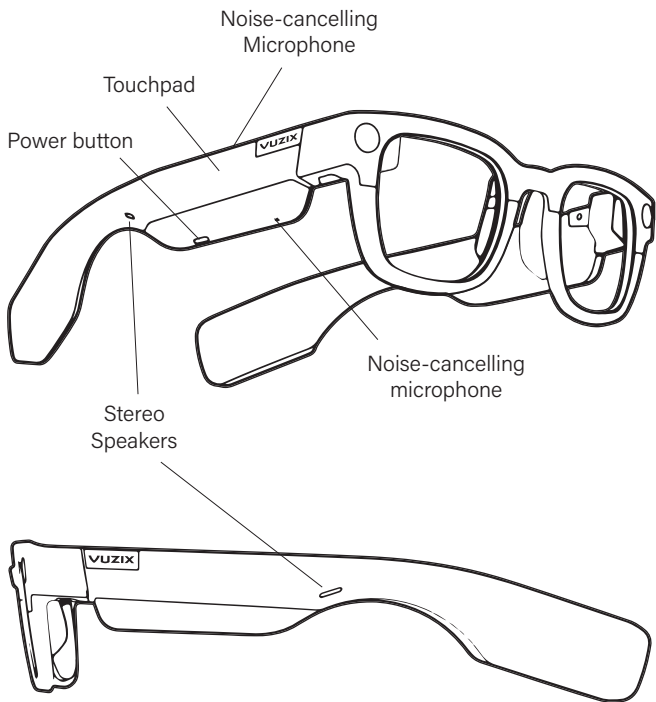


# **VUZIX SHIELD™**

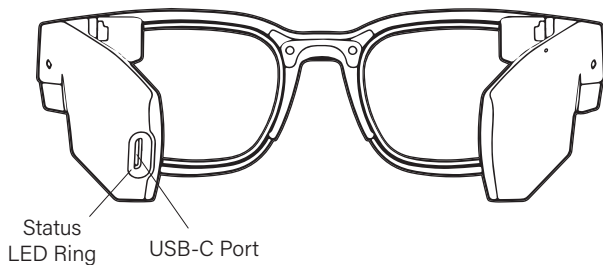
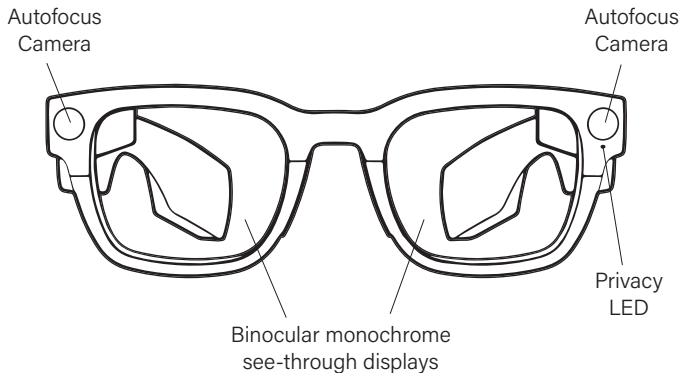
User Manual

Model 492




# Overview



# Overview



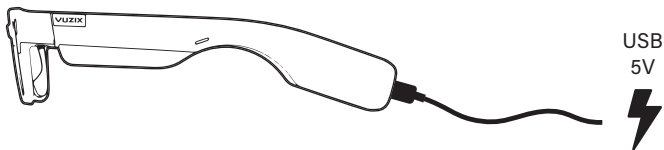
# What's Included

<p>Vuzix Shield™ Smart Glasses</p> 	<p>Storage Case</p> 	<p>USB-C to USB-C Cable</p> 
--	---	---

## Charging

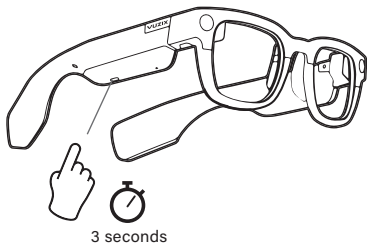
**i** *Your Vuzix Shield™ is shipped with a partial charge. It is recommended that the battery be fully charged for first time use.*

To charge the device, connect the USB-C Port to a USB 5V power source with the USB-C cable



## Powering On

To power the device on, press and hold the Power Button on the bottom of the right temple for 3 seconds.



## Powering Off

To power the device off, press and hold the Power Button for 3 seconds. Select and tap "Power Off" from the menu.



## Battery State

If the device does not power on, the following icons may appear:

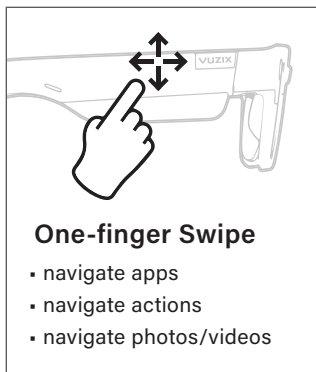
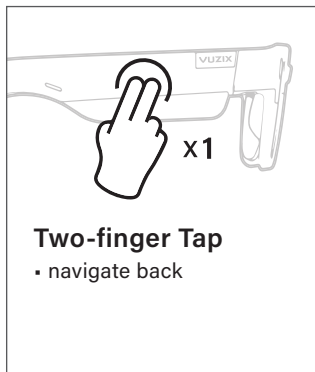


Low battery, plug in device to charge

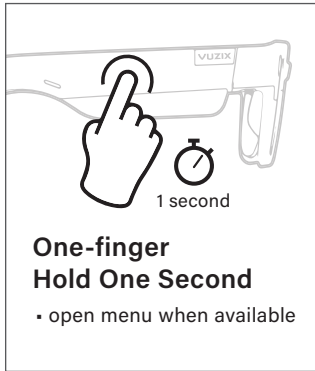
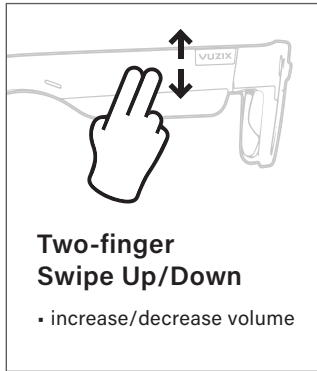


Low battery, device is charging

# Touchpad Gestures



## Touchpad Gestures, CONTINUED

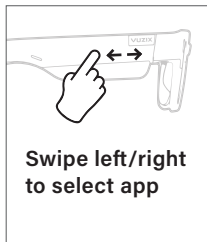
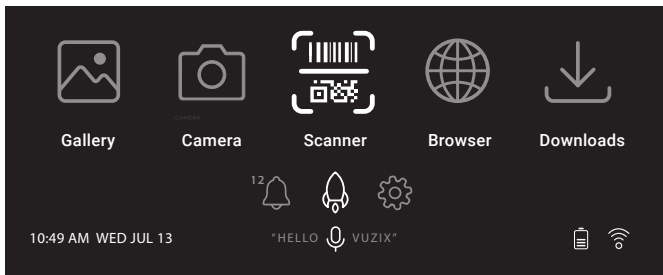


# Home

## Launcher

On boot-up, Home will display automatically with the Launcher selected. Swipe left/right to select an app, tap to launch.

 *Note: Actual interface and icons may vary.*



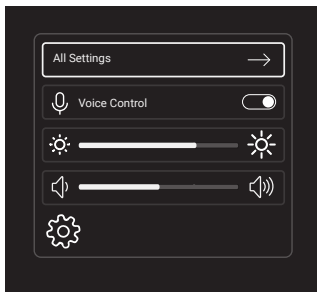
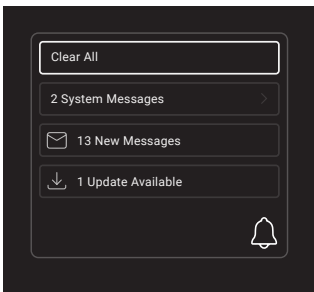


## Home, CONTINUED

### Notifications Quick Settings

To navigate to Notifications or Quick Settings, swipe down from the Launcher, left/right to select the icon, then one-finger tap.

 *Note: Actual interface and icons may vary.*



Within Notifications and Quick Settings, swipe up/down to navigate items, one-finger tap to select, then swipe or tap to adjust. Two-finger tap to exit and return to Launcher.

# WiFi Quick Connect

The easiest and fastest method to connect your Vuzix smart glasses to WiFi is by using a QR code:

Visit [www.vuzix.com/wifiQR](http://www.vuzix.com/wifiQR) on your phone or computer to securely generate a QR code for your WiFi settings.

**Launch the Scanner app** on your smart glasses and look at the QR code to connect to your network.

Example:



The screenshot displays a web form for generating a WiFi QR code. It includes the following elements:

- WIFI NAME:** A text input field containing "yournetworkname".
- PASSWORD:** A text input field containing "yourpassword".
- ENCRYPTION:** A dropdown menu with "WPA/WPA2/WPA3" selected.
- HIDDEN NETWORK:** A checkbox that is currently unchecked.
- GENERATE:** A red button with white text.
- QR Code:** A large QR code generated from the form data, overlaid with a diagonal "SAMPLE ONLY" watermark.

# Applications / Standards

The Vuzix Shield safety spectacles are designed to protect the user against eye injuries through mechanical impact and flying particles. The Vuzix safety spectacles will ensure a secure and comfortable fit and protect against common hazards.

This product can be used in a wide range of applications including:

- Construction
- Engineering
- General assembly
- Inspection work
- Light duty maintenance and repair

These safety spectacles do not provide unlimited eye protection. For your own protection read these instructions completely before using this eye protection.

This protective eyewear has been shown to meet the basic safety requirements under Directives 2001/95/EC and comply with the requirements of (EU) Regulation 2016/425. This product has been examined at the design stage by DIN CERTCO Gesellschaft für Konformitätsbewertung mbH, Alboinstr. 56, 12103 Berlin, Germany; Notified Body: 0196. This product was tested, and approved against EN 166:2001 and EN 170:2002 ANSI\_ISEA Z87.1:2015.

The applicable regulations can be viewed at the EU Declaration of Conformity link:

**<https://www.vuzix.com/support/legal>**

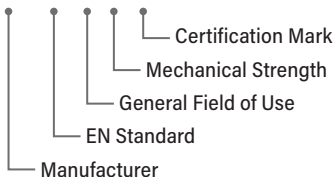
# Eye Protection Marking

## Frame Markings

EN166

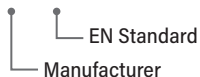
VUZ 166

S CE



Z87.1

VUZ Z87



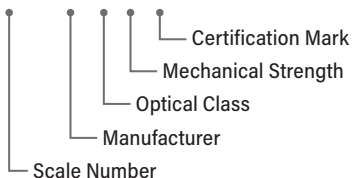
## Lens Markings

EN166

2C-1,7

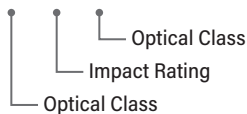
VUZ 1

S CE



Z87.1

VUZ Z87 U5



*Note: If the symbols of the marking are not common to different parts of the protection equipment, the lower protection level shall be assigned to the complete protection equipment.*



*Note: If the General Field of Use is not a T, then the eye protector shall only be used against high speed particles at room temperature.*

# Optical Quality and Useful Life

The Vuzix Shield design provides excellent coverage and good field of vision.

Optical class 1 lenses are particularly suitable when a high level of visual performance is required while protecting the human eye against damage that could result in defective vision, even when worn for prolonged periods of time.

## EN166 Optical properties

<b>Optical class</b>	<b>Spherical refractive power</b>	<b>Astigmatic reflective power</b>
Class 1	± 0.06 dpt.	± 0.06 dpt.
Class 2	± 0.12 dpt.	± 0.12 dpt.
Class 3	± 0.12, -0.25 dpt.	± 0.25 dpt.




When stored correctly at a cool and dry place without use, the maximum lifetime of a safety eyewear product is 6 years. Depending on the intensity of use and wear caused by external influences, the maximum life of a product is 2 years. If protective eyewear has been scratched or otherwise damaged it must be replaced.

# General Warnings

- Always perform a visual inspection of the glasses prior to use.
- Pitted or scratched lenses reduce vision and seriously reduce protection and should be immediately replaced.
- Eye and face protectors that have been subjected to an impact should not be used and should be discarded and replaced.
- This product is for eye protection against moderate impact hazards but is not unbreakable.
- Do not use this product against hazards other than those specified in this document.
- Do not modify or alter the product.
- Always check with supervisory personnel to ensure you are being given the proper protection relative to working conditions.
- No parts of the safety spectacles which are in contact with wearer are made of materials which are known to cause any skin irritation. The material of the eye-protection, which is directly in contact with skin, will not do any harm to the skin. But to those who are easily allergic, there might be allergic reactions.
- Safety spectacles that protect against high speed particles worn over ophthalmic spectacles may transmit impacts, thus creating a hazard to the wearer.
- In accordance with EN 166:2001 and EN 170:2002 safety spectacles cannot be tested and approved for use against liquid droplets. Where liquid protection is specified a suitable product should be considered, for example safety goggles.
- This product is not suitable for grinding or welding.
- This eye protector only protects against physical hazards.

# Cleaning

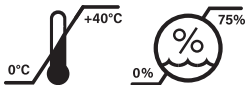
Treat your Shield as you would any quality eyewear. It is mostly maintenance free and only requires to be wiped down periodically, using only a microfiber cloth to clean the device.

-  *Caution: Do not spray with cleaners. If required, use microfiber cloth moistened with standard eyeglass cleaner. Avoid spills. Solvents, household cleaners and paper towels should never be used on your Vuzix Shield.*
-  *Caution: Vuzix Shield is not water resistant. Avoid submerging or exposure to moisture. Excessive moisture will damage the device.*
-  *Caution: Do not pack loose objects in the zipper case with the Shield. Loose objects may cause damage to the device.*

# Climate

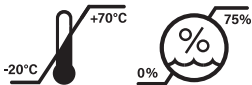
## Operation:

0 to 40°C, 0 to 75% RH



## Storage:

-20 to 70 °C, 0 to 75% RH



# Usage

SAR limits are usually expressed in units of W/kg. Shield has been tested at its highest transmission levels and placed in a position that simulates use against the head with no separation.

Shield maximum determined SAR value over all possible transmission modes is 1.06 W/kg, averaged over 1gm of tissue.

# Support

For further documentation and support scan the QR code or visit **[vuzix.com/pages/shield-support](https://www.vuzix.com/pages/shield-support)**

For safety, warranty and regulatory information, go to the Vuzix legal page at: **[www.vuzix.com/support/legal](https://www.vuzix.com/support/legal)**

SCAN QR FOR SUPPORT



For more information on Vuzix products and accessories visit:

**[vuzix.com](https://www.vuzix.com) | [vuzix.eu](https://www.vuzix.eu) | [vuzix.uk](https://www.vuzix.uk) | [vuzix.jp](https://www.vuzix.jp)**

**Vuzix Corporation**  
25 Hendrix Road  
West Henrietta, NY, USA 14586

**UK Importer - Vuzix (Europe) Limited**  
St. John's House, 5 South Parade  
Summertown, Oxford, OX2 7JL

© 2022 Vuzix Corporation. These instructions are subject to change. Please read the Safety and Warranty booklet before operating this product. All trademarks belong to the respective owners.

492PB0001 (0001) USER GUIDE, SHIELD



## Conformité FCC et ISED

Cet appareil est conforme à la section 15 des règles de la FCC et aux spécifications des normes radioélectriques (RSS) applicables aux émetteurs / récepteurs exempts de licence d'Innovation, Sciences et Développement économique Canada (ISED). Son utilisation est soumise aux deux conditions suivantes: (1) Cet appareil ne doit pas causer d'interférences nuisibles et (2) cet appareil doit accepter toutes les interférences reçues, y compris celles pouvant entraîner un fonctionnement non souhaité.

Les changements ou modifications non expressément approuvés par le fabricant peuvent annuler le droit de l'utilisateur à utiliser l'équipement.

Cet équipement a été testé et déclaré conforme aux limites imposées aux appareils numériques de classe B, conformément à la section 15 du règlement de la FCC. Ces limites sont conçues pour fournir une protection raisonnable contre les interférences nuisibles dans une installation résidentielle. Cet équipement génère, utilise et peut émettre de l'énergie de fréquence radio. S'il n'est pas installé et utilisé conformément aux instructions, il peut causer des interférences nuisibles aux communications radio. Cependant, rien ne garantit que des interférences ne se produiront pas dans une installation particulière. Si cet équipement provoque des interférences nuisibles avec la réception de radio ou de télévision, ce qui peut être déterminé en éteignant et en rallumant l'équipement, l'utilisateur est invité à tenter de corriger l'interférence en appliquant l'une ou plusieurs des mesures suivantes:

- Réorienter ou déplacer l'antenne de réception.
- Augmenter la distance entre l'équipement et le récepteur.
- Connectez l'équipement à une prise d'un circuit différent de celui auquel le récepteur est connecté.
- Consultez votre revendeur ou un technicien expérimenté en radio / télévision pour obtenir de l'aide.

Cet équipement est conforme aux limites d'exposition aux radiofréquences (RF) FCC (US) et ISED (CAN) définies pour un environnement non contrôlé, lorsqu'il est utilisé comme prévu, décrit et expliqué dans le guide de l'utilisateur. Le guide d'utilisation fait partie du paquet livré et est fourni via notre page d'accueil.

Les limites SAR sont généralement exprimées en W / kg.

La Vuzix Shield a été testée à ses niveaux de transmission les plus élevés et placée dans une position simulant l'utilisation contre la tête sans séparation.

La valeur DAS maximale déterminée pour tous les modes de transmission possibles est de 1.06 W / kg, en moyenne sur 1 g de tissu.

### Canada

L'installateur de cet équipement radio doit s'assurer que l'antenne est située ou orientée de manière à ne pas émettre de champ RF supérieur aux limites fixées par Santé Canada pour la population en général consulter le code de sécurité 6, disponible sur le site Web de Santé Canada:

<https://www.canada.ca/en/health-canada/services/environmental-workplace-health/reports-publications/radiation/understanding-safety-code-6.html>

Le fonctionnement de 5150-5250 MHz est limité à une utilisation en intérieur uniquement.

## FCC and ISED Compliance

This device complies with part 15 of the FCC Rules and with the Radio Standards Specifications (RSS) for licence-exempt transmitters/receivers of Innovation, Science and Economic Development Canada (ISED). Operation is subject to the following two conditions: (1) This device may not cause harmful interference, and (2) this device must accept any interference received, including interference that may cause undesired operation.

Changes or modifications not expressly approved by the manufacturer could void the user's authority to operate the equipment.

This equipment has been tested and found to comply with the limits for a Class B digital device, pursuant to part 15 of the FCC Rules. These limits are designed to provide reasonable protection against harmful interference in a residential installation. This equipment generates, uses and can radiate radio frequency energy and, if not installed and used in accordance with the instructions, may cause harmful interference to radio communications. However, there is no guarantee that interference will not occur in a particular installation. If this equipment does cause harmful interference to radio or television reception, which can be determined by turning the equipment off and on, the user is encouraged to try to correct the interference by one or more of the following measures:

- Reorient or relocate the receiving antenna.
- Increase the separation between the equipment and receiver.
- Connect the equipment into an outlet on a circuit different from that to which the receiver is connected.
- Consult the dealer or an experienced radio/TV technician for help.

This equipment complies with the FCC(US) and ISED(CAN) radio frequency (RF) exposure limits set forth for an uncontrolled environment, when used as intended, described and instructed in the user guidance. User guidance is part of the delivered package and provided through our home page.

SAR limits are usually expressed in units of W/kg.

The Vuzix Shield has been tested at its highest transmission levels and placed in a position that simulates use against the head with no separation.

The maximum determined SAR value over all possible transmission modes is 1.06 W/kg, averaged over 1g of tissue.

### Canada

The installer of this radio equipment must ensure that the antenna is located or pointed such that it does not emit RF field in excess of Health Canada limits for the general population; consult Safety Code 6, obtainable from Health Canada's website:

<https://www.canada.ca/en/health-canada/services/environmental-workplace-health/reports-publications/radiation/understanding-safety-code-6.html>

Operation of 5150-5350 MHz is restricted to indoor use only.