



Congratulations on
purchasing our Backup Camera System!



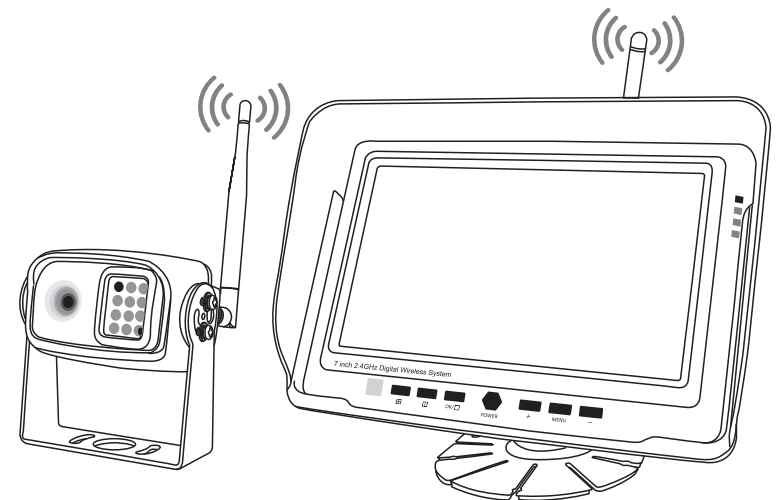
***We recommend doing a benchmark test before installation
to ensure that all components are working properly.***



**IN NO EVENT SHALL SELLER OR MANUFACTURER BE LIABLE FOR ANY
DIRECT OR CONSEQUENTIAL DAMAGES OF ANY NATURE, OR LOSSES
OR EXPENSES RESULTING FROM ANY DEFECTIVE PRODUCT OR THE
USE OF ANY PRODUCT.**

INSTRUCTION MANUAL

AHD 1080P Wireless Rear View Camera System QUAD VIEW (4) CAMERA



Please read this manual before using the product. It may be different from
how it is described in the manual depending on the software version

Package contents

- ▶ Wireless camera x 1
- ▶ 7" wireless monitor x 1
- ▶ Mount Bracket x 1
- ▶ Monitor sunshade x 1
- ▶ Antenna x 2
- ▶ Screw Kit for Camera Installation x 1
- ▶ Camera Power Cable x 1

Before Beginning Installation

Before drilling, please check that no cable or wiring is on the other side of the wall. Please clamp all wires securely to reduce the possibility of them being damaged while vehicle is in use.

Keep all cables away from hot or moving parts and electrical noisy components.

We recommend doing a benchmark test before installation to insure that all components are working properly.

Step 1: Choose the monitor and camera locations.

Step 2: Install all cables in vehicle, when necessary a 0.8 (20mm) hole should be drilled for passing camera cable through vehicles walls. Install split grommets where applicable.

Step 3: Once all cables and wiring have been properly routed, perform a system function test by temporarily connecting the system. If the system seems to not be operating properly see troubleshooting.

Installation Guide

Camera Installation

1. Attach camera bracket close to rear marker lights, centered on vehicle.
2. Camera: drill a 20mm (0.8in) diameter hole into vehicle body near the camera and bracket. Insert camera cable into vehicle not to kink cable) and fit grommet into hole. Apply sealant around grommet to increase resistance to water penetration. connect camera to the camera extension cable which runs inside the vehicle.

Troubleshooting

● Monitor Displays Blue Screen & Displays No Signal

Do a hard reset, unplug all cables and power cables and leave them out for 2 minuteS and then re-connect them.

Check to ensure that the connection to the camera is tight.

● Monitor Will Not Power-Up (no backlight no power button)

Check fuse

Check 12v+ to monitor

● No Image On Screen

Verify camera is connected with antenna

Verify camera is connected to cable

How to playback the recordings saved

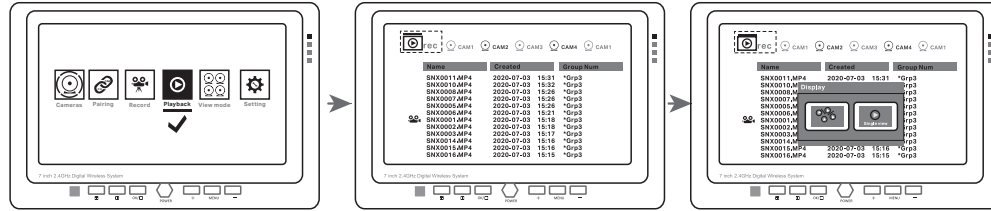
Press " Menu" button

Press "+" or "-" scroll to " PLAYBACK"

Press "OK"

Press "+" or "-" scroll to the footage you want to playback

Press " OK", playback starts

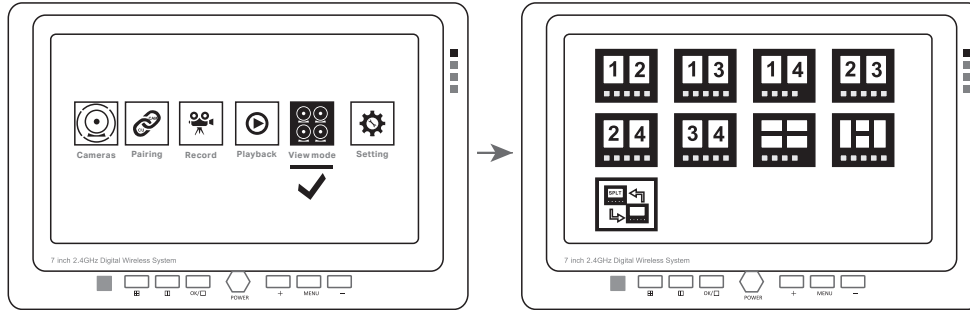


How to choose display view mode

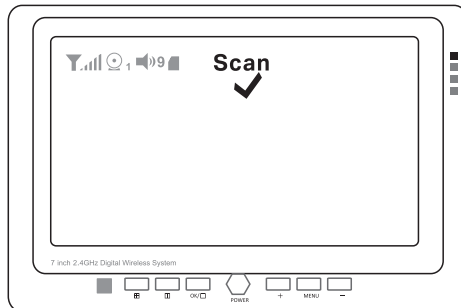
Press " Menu" button

Press "+" or "-" scroll to " View mode"

Choose desired view mode when you have two or more cameras installed, Press "OK"



If you hope to see each camera in loop viewing automatically, choose and " SCAN" appears on the screen in this mode



3. Feed as much cable as possible into vehicle with clamp securely. This reduces the possibility of cable being hooked or snagged. The aviation camera cable uses aircraft grade connectors which means the camera cable can be exposed to all weather conditions.

4. Attach camera to bracket using screws and adjust the angle.

5. Wiring camera

connect the POWER (red) to 12V and the GROUND (black).

Installation Guide

Monitor

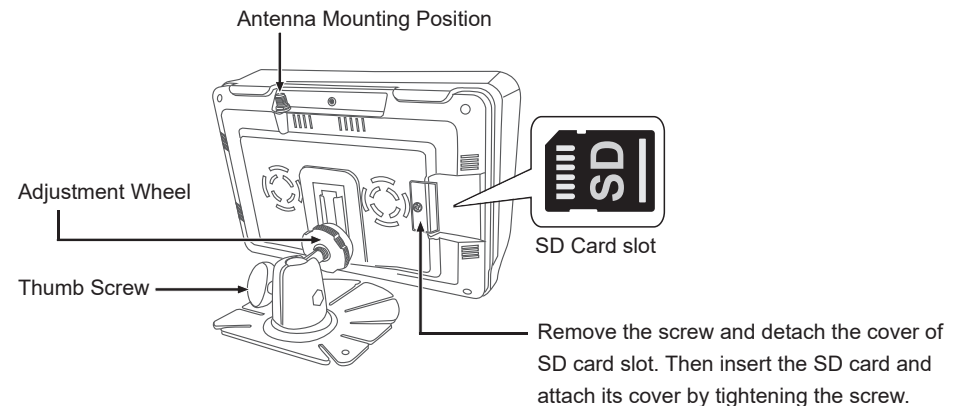
1. To attach the pedestal mount to the dashboard or to the headliner use self-tapping screws and/or the adhesive pad.
2. Attach monitor to mount, and adjust mounting angle to allow optimum driver viewing comfort.

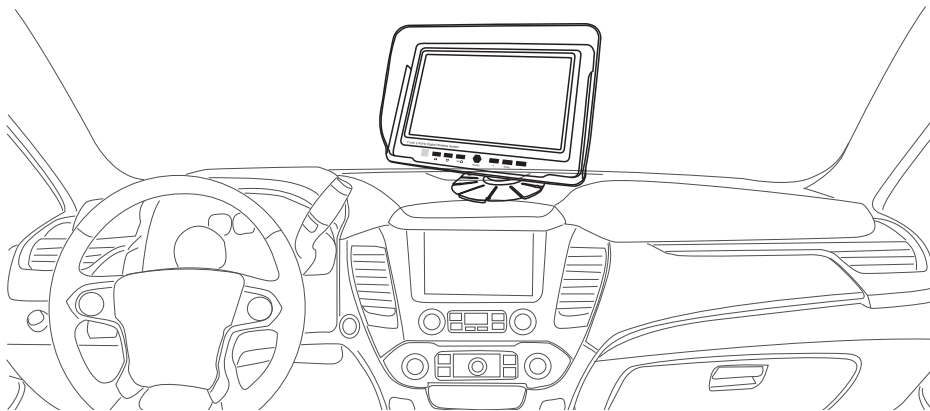
Infrared technology built into camera IRs are activated automatically according to the lighting conditions.

Grid lines function can be turned on/off by manually from menu.

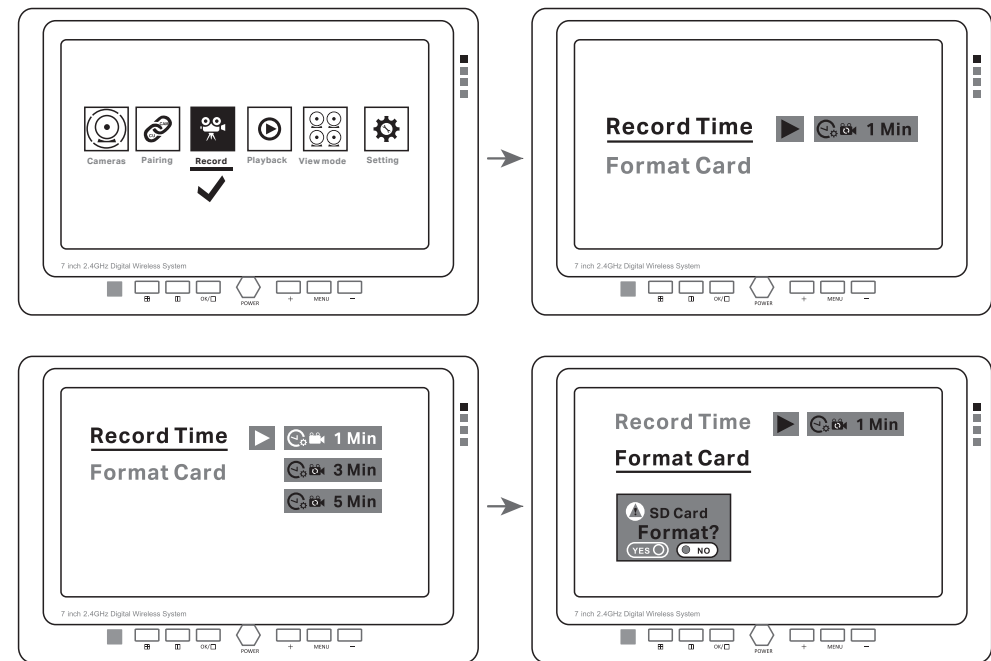
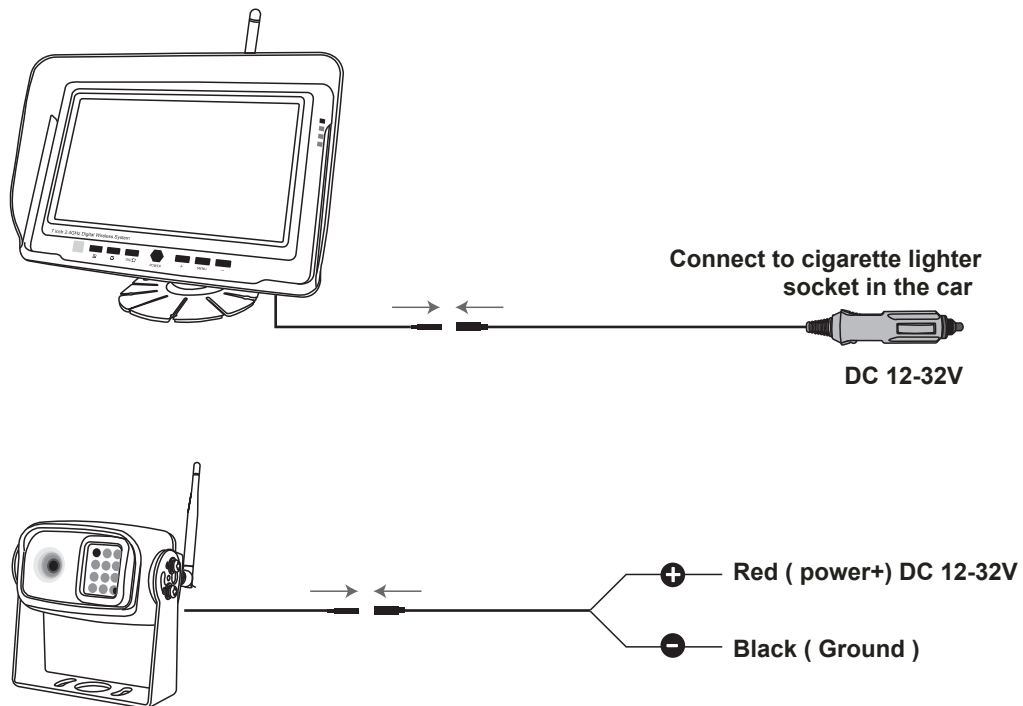
(Note: if connecting power directly to battery, the camera is always ON and therefore can drain battery. Therefore it is recommended to connect power to an ignition switched accessory power source.)

Install the monitor



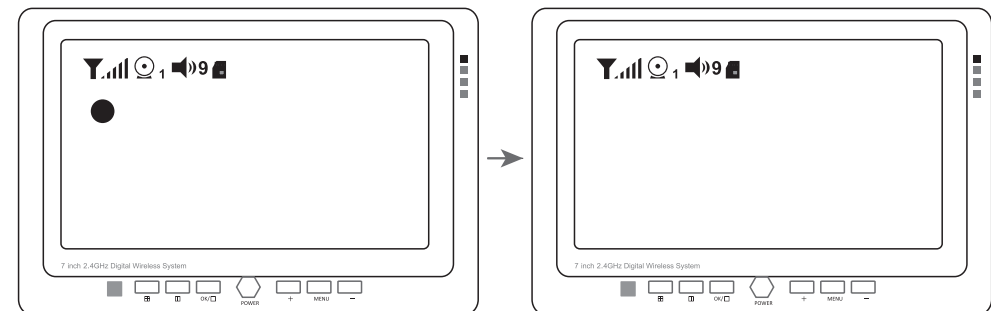


Installation Diagram



How to set up Record on/off

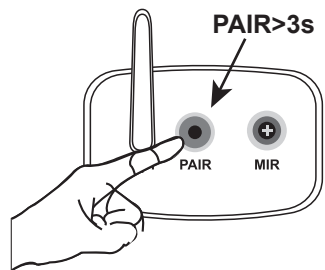
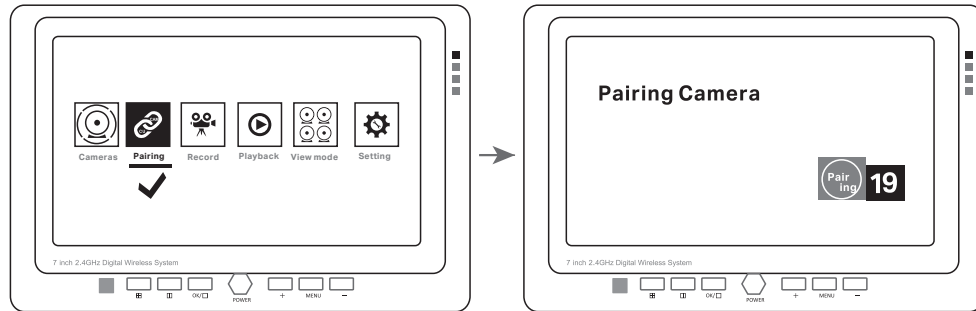
When you use one camera mode, press " MENU" > 2S to turn on Record
Press " MENU" > 2S again to turn off Record



Camera Pairing

This system is default being paired, it displays camera image as soon as power connection finished.

Camera pairing is needed to use when you need to repair camera and monitor if it loses signals or when you need to add more cameras to this system.



Press "Menu", press "+" or "-" scroll to Pairing
Press "OK", it appears countdown "20 seconds" on the monitor
Press "Pair" button > 3s in the back of camera
Monitor displays camera image when pairing complete

Record

This monitor has built-in DVR, it can record video footage if you like to.

Note: SD card supports up to 128GB (up to level 4)

SD card is NOT included in the package

Press "Menu" button

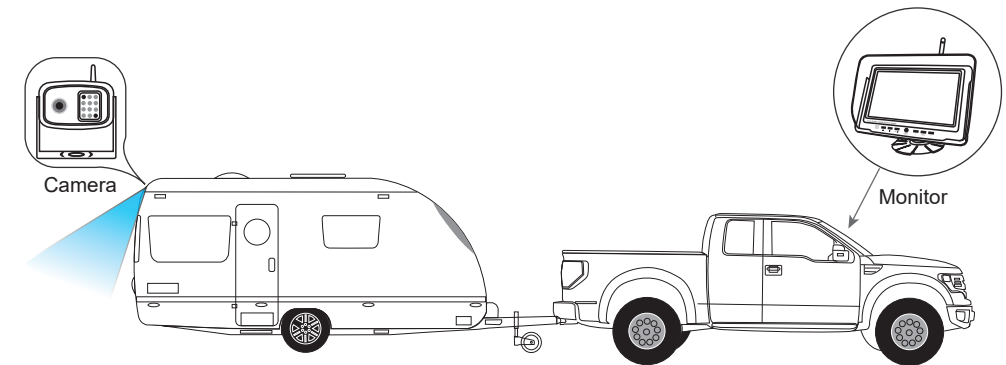
Press "+" or "-" scroll to "Record"

Press "OK"

Press "+" or "-" scroll to set up record time (can setup 1-5 mins for one footage to save)

Or Format SD card when you need

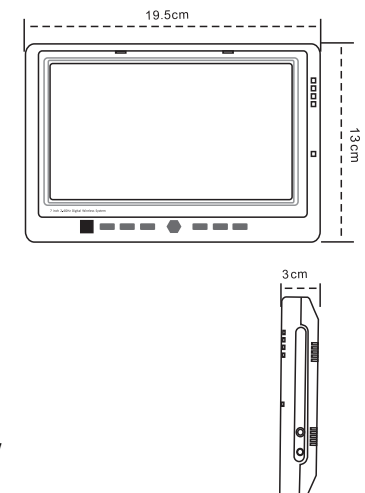
Positioning



Monitor Specifications

FULL AHD Wireless Monitor

- Screen Size 7" (diagonal length)
- Technology 2.4GHz Digital Wireless
- Transmission Distance 330ft / 100m
- Frequency 2400 -2483.5 MHz
- Camera Max support 4 cameras
- Resolution 1024 x 600 (RGB)
- Display Format 16:9 /500:1
- Display Brightness 400cd/M²
- Viewing Angle U: 50° / D: 50° / R: 70°
- Video Source 1Vp-p, 75Ω
- Power Source DC 12-32V
- Display Mode Single, Split view, Quad view
- Power Consumption < 500mA
- Operating Temperature -30℃ ~ +80℃
- Video System Auto NTSC / PAL
- Overall Dimension 19.5cm (L) x 3cm (D) x13cm (H)
- Weight 0.4kg
- Sync System Internal

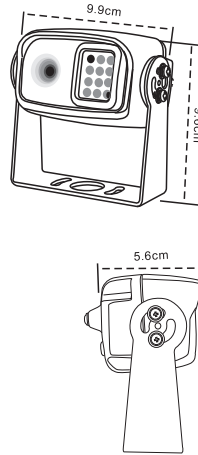


Note: this monitor can recording video footage

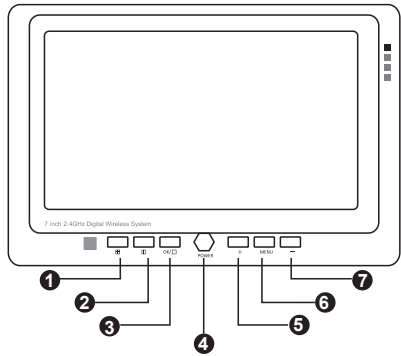
- DVR Storage SD card supports up to 128GB (up to level 4)
SD card is NOT included in the package
- Feature Overview Preview / Recording / Playback

Camera Specification

- Camera Image 1080P
- Type Wireless 2.4GHz
- View Angle 110°
- Sync System Internal
- Transmission Distance 330ft / 100m
- Infrared distance 50 Feet (18 Infrared IR)
- Illumination 0 Lux (IR on)
- Power Source DC 12V -32V
- S/N Ratio more than 48dB
- Electronic Iris 1/50, 160-1/100000S
- Waterproof Rating IP69K
- IR switch control ACDS automatic Control
- Impact Rating 20G vibration / 100G shock
- Operating Tempt -30 ℃ ~ +80 ℃ / RH95% max
- Storage Tempt -40 ℃ ~ +60 ℃ / RH95% max
- Dimension 9.9cm (L) x 5.6cm (D) x9.6cm (H)



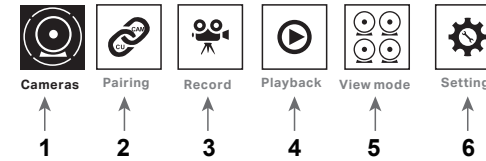
Monitor Operation



- 1 Quad view (4 camera) display mode
- 2 Split view (2 camera) display mode
- 3 Single view (1 camera) selection
OK: confirm button in sub-menu
- 4 Power on / off button
- 5 UP Arrow
- 6 Menu / Selection button
- 7 Down arrow

- To turn on the monitor, press "POWER" button
- To get to the menu, press " MENU" and use arrows to choose your settings.
- To display options, press " MENU" to select
- To confirm your choose press "MENU" as confirm

Main Menu

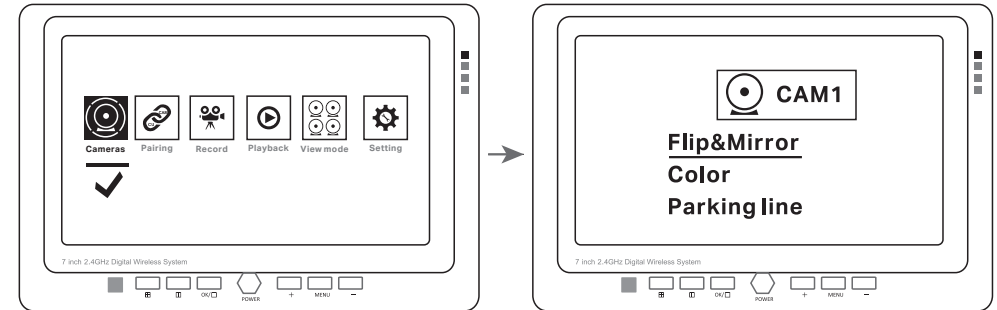


1. Camera settings: normal / mirror; color; parking line on/off
2. Pairing: to repair camera and monitor or add a camera
3. Record: to set up recording time; format card
4. Playback: to play recording footage
5. View mode: to select quad view; split view mode; auto display 1 to 4 camera on/off
6. Setting: to setup delay time, date / time; display camera selection

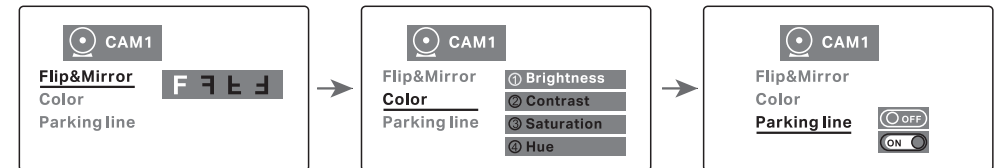
How to set up camera

Press "MENU" button

Press "OK" button



Press "+" or "-" scroll to setup camera FLIP / MIRROR image; Color; Parking Line on/off
Press " OK" button confirm settings



FCC Caution.

§ 15.19 Labelling requirements.

This device complies with part 15 of the FCC Rules. Operation is subject to the following two conditions: (1) This device may not cause harmful interference, and (2) this device must accept any interference received, including interference that may cause undesired operation.

§ 15.21 Information to user.

Any Changes or modifications not expressly approved by the party responsible for compliance could void the user's authority to operate the equipment.

§ 15.105 Information to the user.

Note: This equipment has been tested and found to comply with the limits for a Class B digital device, pursuant to part 15 of the FCC Rules. These limits are designed to provide reasonable protection against harmful interference in a residential installation. This equipment generates uses and can radiate radio frequency energy and, if not installed and used in accordance with the instructions, may cause harmful interference to radio communications. However, there is no guarantee that interference will not occur in a particular installation. If this equipment does cause harmful interference to radio or television reception, which can be determined by turning the equipment off and on, the user is encouraged to try to correct the interference by one or more of the following measures:

- Reorient or relocate the receiving antenna.
 - Increase the separation between the equipment and receiver.
 - Connect the equipment into an outlet on a circuit different from that to which the receiver is connected.
 - Consult the dealer or an experienced radio/TV technician for help.
-