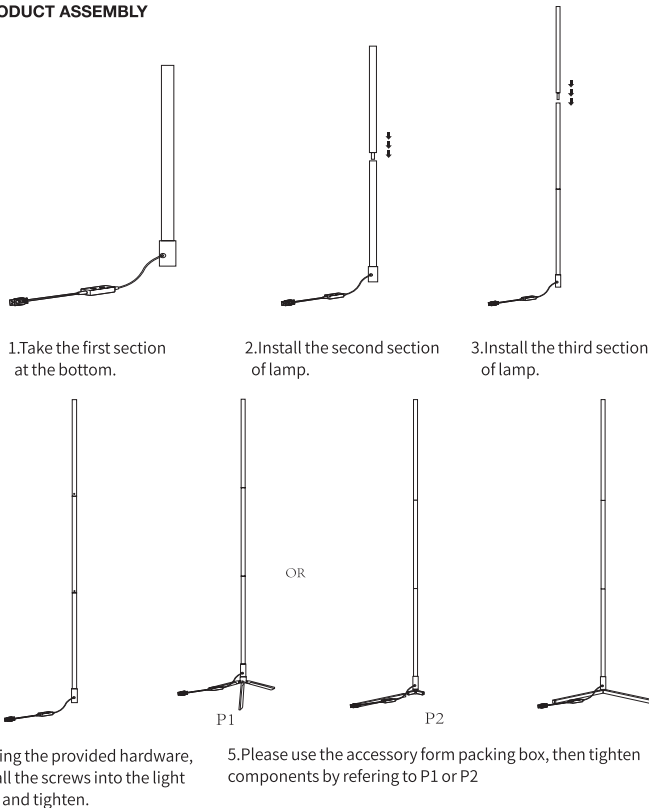




## Installation manual

### PRODUCT ASSEMBLY



## Magic Touch Controller Manual

### 一、 Basic parameters

Working voltage: DC5-24V  
Effect model: 358 kinds of effect  
Control point figure: Aximum adjustable to 2048 pixels  
Remote control distance: ≤30m  
Batory model: AAA Battery(remote control battery)

### 二、 Remote control operation instructions

— : On/of key(power on/off)  
○ : Pause button(long press this button for 5 seconds to enter the point adjustment state under shutdown state)

Color ring(touch the corresponding color and the light strip will display the corresponding color)

M+: Mode plus(next effect)  
M-: Mode minus(last effect)  
S+: Speed up(the light runs faster)  
S-: Slow down(the running speed of the light slows down)  
B+: Increase in brightness  
B-: Decrease in brightness

**Auto play:** press any key of color ring first,then press the pause button loop from the first effect to the last effect

**Regulating point function:** First,press — "On key"to turn of the machine. In the shutdown state, long press the ○ "pause"button for 5 seconds to enter the point adjustment state.Press "M+"and "M-"to adjust the points. After adjustment, press "On"to save.

**Code function:** in any case,long press the color ring "top blue key"for 5 seconds(can not shake left and right),can be achieved  
One-to-one matching between the remote control and the controller. After the match, the blue light flashes three times, at which time only the remote control can control the controller.

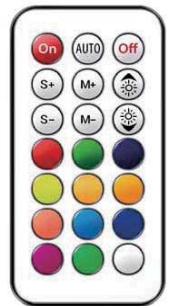
**Code clearing function:** in any case,long press the "yellow key at the bottom"of the color ring for 5 seconds(can not shake left and right),can be rem  
One-to-one matching between the remote control and the controller. Restore all remote controls in common. After successful lifting, the light with the yellow light flashes three times, then all the remote control You can control the controller.



## Magic Touch Controller Manual

### Remote control operation instructions

On : Power/Play pause  
AUTO : 1. Auto play 366 Modes  
2. In the off state, press this button to enter the setup menu, then press the M+or M-to adjust LED pixels. Press the blue button to adjust the RGB sequence. After complete setting, press OFF to save/exit.  
OFF : Shutdown.Auto save when shutdown  
S+ : Speed+ (10 levels speed adjust)  
S- : Speed- (10 levels speed adjust)  
M+ : Mode+ (366 kinds mode switching)  
M- : Mode- (366 kinds mode switching)  
Brightness+ (Brightness adjustment(32levels)  
Brightness- (Brightness adjustment(32levels)



### Monochrome Display Press these buttons, light strip displays its corresponding colors.

RGB sequence adjustment function In the state of shutdown, press the AUTO to enter the setup menu. Now, the first three lights of LED strip display the current RGB sequence. Press this button to adjust the RGB sequence until the sequence of the previous three lights are red, green and blue. Then press the OFF button to save.

Press 5 seconds, remote controls ara one to one matching (only this remote control can control it) (This feather is available only for the RF version)

Press 5 seconds to cancel the remote control matching. All remote controls can control it.(this feature is available only for the RF version)

## LED mobile phone Bluetooth controller

### Product Features:

- LED Bluetooth controller is directly via mobile phone control remote distance can reach 10m without the need to set up, easy to connect open the software within 5 seconds you can automatically connect the controller
- Flow the rhythm of the music changes
- Group control
- Brightness, speed addition and subtraction
- Maximum can be 10 meters SPI driven strip, up to 200 pixels.
- The software shows that the text is based on the language of the mobile phone set up automatic transformation of Chinese, English and other local languages.

### Animation Effect:

- Different color control of each group of LED point.
- Colorful gradient
- All kinds of monochrome, double color gradient
- All kinds of monochrome, double color, colorful flashing
- Colorful jump
- Follow the rhythm of the music changes

### Product Parameters:

- SPI Strip Type: WS2811, SM16703, 16730p, SG1903, etc.
- Bluetooth: BLE V4.2
- Input Voltage: 4.5~12V
- Working Temp: -25~75 °C
- Size: 43\*22\*11mm

### APP Program Usage

### Scan two-dimensional code download App

- ① Connect LED color strip and controller, power on controller
- ② Scan two-dimensional code download APP:



- ③ Start APP, search and connect controller
- ④ Enjoy the Bluetooth wireless control experience



### Portable IR Controller



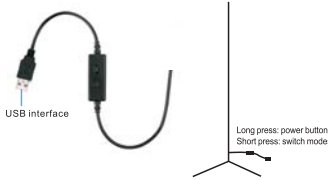
Portable and easy to use IR controller.

### Key Functions:

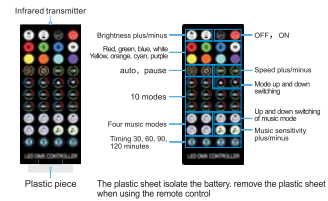
1. Turn on, turn off lights
2. Auto loop all modes
3. Speed +/-
4. Mode up/down
5. Lights +/-
6. 12-classic color shortcuts.

### Product Description

Bluetooth Symphony Controller



Remote control:



### Instructions

LED DMX 00-XXXX ( With voice control )

LED DMX 01-XXXX ( No voice control )

On the homepage interface, pull down to refresh, the APP will automatically search for nearby devices. After finding the device, click the device icon to enter the light control interface. You can also click the "G" button in the upper right corner, select the device and enter the light control interface. (Select LED DMX 00-XXXX device)



1. ⚙️ Setting: You can set RGB sorting, timing, shake, and change skin.



### Download App Software

Please search LED LAMP in major Appcenters, or scan below QR code.



1. Download the "LED LAMP" APP with your mobile phones by scanning the QR code on user manual or search the "LED LAMP" APP in iPhone APP store or Google play store.
2. After the APP are downloaded successfully, you need to turn on Bluetooth function on your phone firstly, then plug in the strip light, then open the APP, your APP will pair with the strip light automatically and you can control it.

Android phones need to open the location function and allow permission

### Unable to Connect Troubleshooting

- (1) Check if the power supply of the light strip is normal.
- (2) Check if the Bluetooth is turn on.
- (3) Check if there are other mobile phone are connected. Bluetooth 4.0 only support connections one to many, dose not support many to many.
- (4) Check APP Bluetooth setting if the phone is connected to the device, if connect, exit the APP and reopen, the APP will go to connect automatically.
- (5) Normal operations and can not connect, please exit the APP and reopen.
- (6) Exit APP, restart mobile phone, power on the strip light, reopen the APP, then they will connect automatically.

2. 🌈 Color interface: The color interface has three parts: color ring, aisle and monochrome.



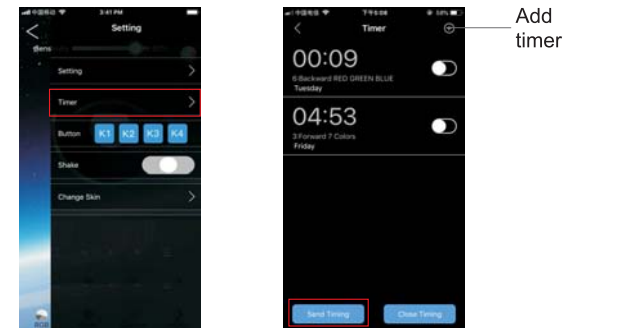
3. 🎵 Mode interface: you can choose the mode, adjust the speed, adjust the brightness what you want;



5. 🎵 Music interface: It is composed of two parts: voice control and music. The voice control interface has hundreds of voice control modes to choose from. The music interface requires a mobile phone to play songs.



6. Timer: can set the desired time period to open the desired mode, turn off the desired Mode.



This device complies with part 15 of the FCC Rules. Operation is subject to the following two conditions: (1) this device may not cause harmful interference, and (2) this device must accept any interference received, including interference that may cause undesired operation.

Any changes or modifications not expressly approved by the party responsible for compliance could void the user's authority to operate the equipment.

NOTE: This equipment has been tested and found to comply with the limits for a Class B digital device, pursuant to Part 15 of the FCC Rules. These limits are designed to provide reasonable protection against harmful interference in a residential installation. This equipment generates, uses and can radiate radio frequency energy and, if not installed and used in accordance with the instructions, may cause harmful interference to radio communications.

However, there is no guarantee that interference will not occur in a particular installation.

If this equipment does cause harmful interference to radio or television reception, which can be determined by turning the equipment off and on, the user is encouraged to try to correct the interference by one or more of the following measures:

- Reorient or relocate the receiving antenna.
- Increase the separation between the equipment and receiver.
- Connect the equipment into an outlet on a circuit different from that to which the receiver is connected.
- Consult the dealer or an experienced radio/TV technician for help.

The device has been evaluated to meet general RF exposure requirement. The device can be used in portable exposure condition without restriction