

# App-Controlled Automatic Pet Water Fountain

User manual

---

## Automatic Pet Water Fountain

Model: TK-WF004

Made in China

TK-WF001\_V1.0



This device complies with Part 15 of the FCC Rules. Operation is subject to the following two conditions: (1) this device may not cause harmful interference, and (2) this device must accept any interference received, including interference that may cause undesired operation.

Model : TK-WF004

Before using the product, please read this manual thoroughly and retain it for future reference.

# Contents

|                                  |    |
|----------------------------------|----|
| Safety Precautions               | 1  |
| Product Overview                 | 2  |
| How to Use                       | 4  |
| Care Instructions                | 7  |
| How to Clean the Pump            | 8  |
| How to Font looks different here | 9  |
| Troubleshooting                  | 10 |
| Specifications                   | 11 |
| Warranty                         | 12 |

## Safety Precautions

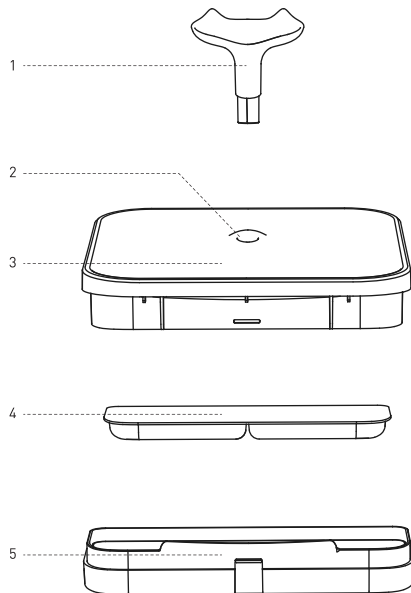
### ! Warning

- Dispose of all packaging materials properly. Keep the polybags away from children and pets as these bags could cause suffocation.
- Do NOT allow children to play with, in or around the pet water fountain.
- To avoid injury, please keep close supervision when the appliance is used near children.
- Do NOT use the water fountain with pets not able to reach the water tray or with any physical disability.
- Do NOT place any foreign object in the water tank.
- Do NOT disassemble the pet fountain other than components as instructed in this User Manual.
- Do NOT use the pet fountain for anything other than its intended use.
- Only use attachments recommended or sold by the manufacturer. The use of attachments not recommended or sold by the manufacturer may cause an unsafe condition. Do NOT modify the pet fountain.
- Do NOT operate any appliance if the unit is malfunctioning or has been damaged. Do not attempt repairs on the device yourself. Contact our customer service immediately for further instructions.
- Be sure to disconnect the power supply for safety when the appliance is not in use.
- Please disconnect the power supply before maintaining and cleaning the machine.
- Always unplug the appliance when not in use; or before putting on or taking off parts and before cleaning.
- The power adapter and wire plug must not be flooded during cleaning.
- This product is for indoor use only.
- This product is not allowed to run without water.
- Never pull the electrical power cord to remove the plug from the wall outlet.
- If the plug of this device gets wet, turn off the electricity of that wall outlet. Do NOT attempt to unplug.
- Check the device after installation. Do NOT plug in if there is water on the contact points or plug.
- To avoid tripping, always position the power cord out of the way of foot traffic.
- Do not use the appliance in the bathroom.
- Change the filter every 2 weeks or when the flow rate has noticeably reduced. For two or more cats, you may need to replace the filters more regularly if it becomes blocked.

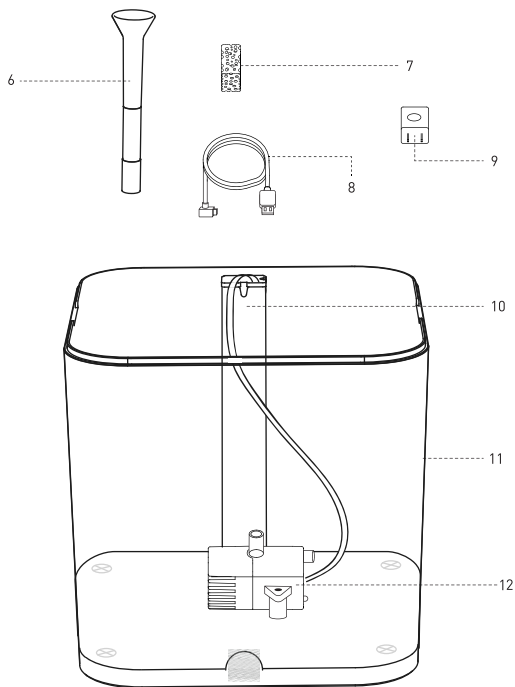
### Caution

- Do NOT allow pets to chew on or swallow any parts. If you are concerned about the power cord, purchase a cord conduit (a hard-plastic protector) at any hardware store to protect the power cord.
- If an extension cord is necessary, one unit with a proper rating should be used.
- Do NOT install or store the pet water fountain where it will be exposed to weather or temperatures below 0°C / 40°F.
- Read and observe all important notices listed on the pet water fountain and in the packaging.

## Product Overview



- |                 |                |
|-----------------|----------------|
| 1) Spout        | 4) Filter      |
| 2) Water Outlet | 5) Filter Tray |
| 3) Water Tray   |                |



- |                |                                |
|----------------|--------------------------------|
| 6) Water Pipe  | 10) Cord Slot                  |
| 7) Foam Filter | 11) Water Tank                 |
| 8) USB cable   | 12) Water pump with power cord |
| 9) Charger     |                                |

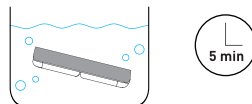
## How To Use

### Step 1

**Soak the filter in a clean bowl for 5 minutes.**

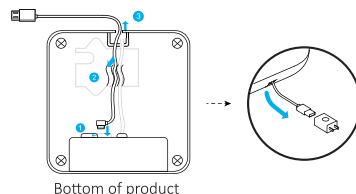
Notes:

- 1) The filter must be fully soaked before the fountain is turned on; otherwise, water may not flow through the filter smoothly and cause spillage.
- 2) Please rinse the filter under the water tap thoroughly (illustrated).
- 3) Do not soak the filter in the water tank of the fountain in case of any surface dust.

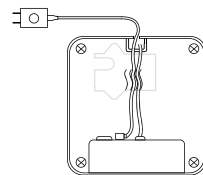


### Step 2

**Insert the Type-C USB power cord.**



Bottom of product

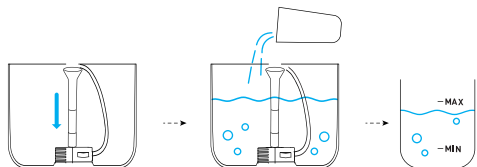


Elevation view

### Step 3

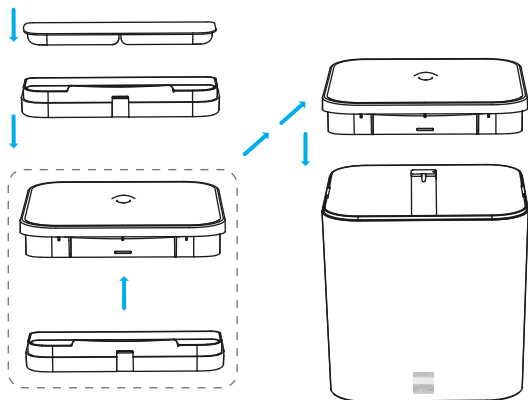
**Install the water pipe on the pump. Add water to the tank.**

Note: Keep the water level between the Min and Max level. If the water under the Min level, the indicator light will turn to red color.



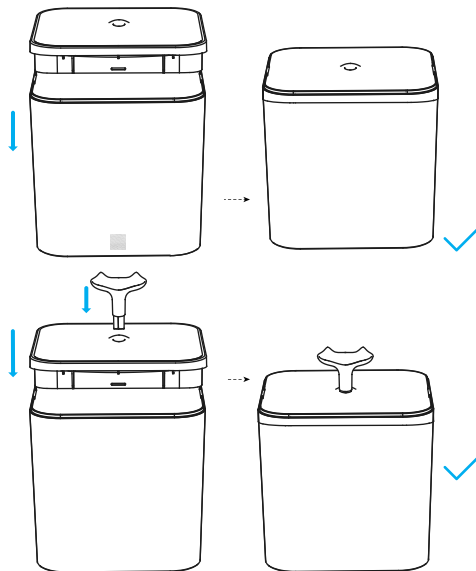
### Step 4

**Install the filter tray and place the filter on the filter tray. Press down firmly to make sure the pipe outlet comes out.**



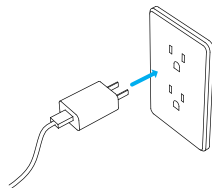
### Step 5

**Install the water tray. Whether to install the spout depends on your pet's drinking preference.**



### Step 6

**Connect the power adapter.**



## Care Instructions

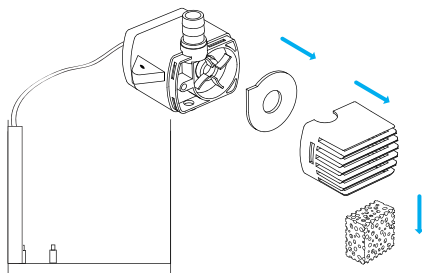
- 1) Replace the filter and foam every 2 weeks.
- 2) Clean the pump and fountain every 2 weeks.
- 3) To extend the life of pump, please add water before starting the machine.

## How to clean the pump

### Step 1

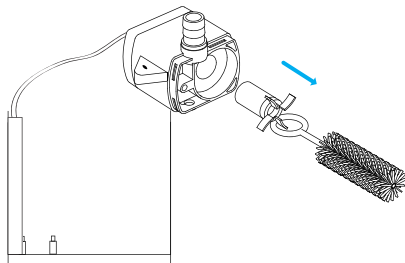
**Remove the pump cover and impeller cover in sequence.**

Note: The foam filter is in the pump cover, change the foam every 2 weeks.



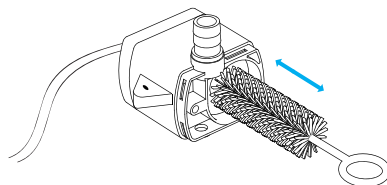
### Step 2

**Remove the impeller by the brush hook.**



### Step 3

**Use the brush to clean the parts with water.**



Tip: The brush can also be used to clean the spout. Recommended to clean the spout every 2 weeks.

## How to bind app

### Step 1. App download and installation

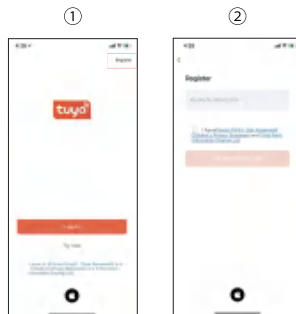
Please scan the QR code or QR code on the packaging box to download TuyaSmart app and complete the installation.



Or manually look up TuyaSmart App on your phones app store.

### Step 2. App Registration

1. Please open "TuyaSmart" APP and click "Register"
2. Enter your email address.
3. Please input verification code sent to your email address
4. Please set up login password and login successfully



③



④



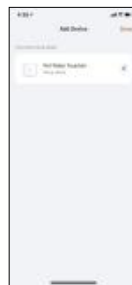
⑤



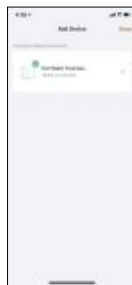
④ Enter Wi-Fi Password



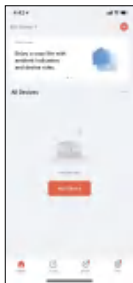
⑤ Connecting...



⑥ Device added successfully



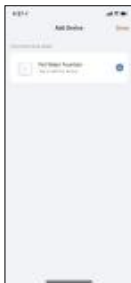
### Step 3. Pet Fountain Configuration



① After log in, click "add device"

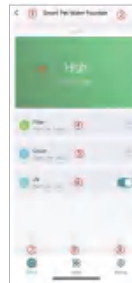
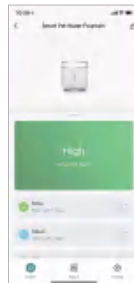


② Click Pet Fountain (Wi-Fi)



③ Confirm indicator rapidly blink

### Step 4: Interface introduction



① Device name, It can be modified.  
② Setting functions.

③ Water level, two status:  
【High】 and 【Low】. If it displays 【Low】 , it means the device lacks water.  
【High】 it means there is sufficient water in water tank.

④ Remind filter replace time.

⑤ Remind cleaning time,  
⑥ Display UV running time.

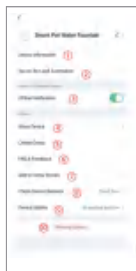
⑦ Turn on/off the device.

⑧ Two status: normal and smart. ( On smart mode cannot adjust the settings as settings are put on what is recommended, whereas on normal mode can adjust the settings to your preference.)

⑨ Settings: set filter replace time, UV Running time etc.



## Step4.Setting introduce



- ① Set filter replace time.
- ② Set clean pump, water tank time.
- ③ After replace filter, click it, start timing.
- ④ After clean pump, water tank, click it, start timing.
- ⑤ Adjust water stream.
- ⑥ Adjust the indicator light.
- ⑦ Set UV running time.
- ⑧ Set change water time.
- ⑨ After change water, click it, start timing.

- ① View the device ID, IP address, MAC, zone time, signal.
- ② If the device is offline, the APP will send a message after 30 minutes.
- ③ Tap-to-Run and Automation
- ④ it can share to other mobile numbers.
- ⑤ Create Group.
- ⑥ FAQ & Feedback.
- ⑦ Add to Home Screen.
- ⑧ Check Device Network.
- ⑨ Device Update.
- ⑩ Remove device will delete the Wifi information from the device. Then use a new account to connect.

## Troubleshooting

| Problem   | Solution   |
|---|--|
| Water keeps spilling out of the water tray.               | The filter may not be fully soaked. Please soak the filter in a clean bowl (not in the water tank) for 5 minutes before the first use.   |
| The pump stops working.                                   | 1) Fill in water between MIN and MAX. The pump will fail if it runs dry.<br>2) Clean the pump, water tank, and drinking basin.<br>3) If the above solutions don't work, please contact us, or alternatively find a replacement online through online stores such as amazon |
| How often should I change the filters? Where to get them? | It's recommended to replace the filters every 2 weeks. Please contact us to purchase new filters, or alternatively find them online through online stores such as amazon   |
| Why do I need to soak the filter before first use?        | The filters absorb more water (and therefore clean more water) when they're wet and expanded. Soaking the filter removes particulate matter that may have settled on the filter.   |
| Water output speed slows down.                            | For the first use (or reuse after long-time storage), the water pump needs to discharge air, it's normal if the water output speed slows down.   |

## Specifications

|                     |  |
|---------------------|--|
| Model               | CLEANWATER PRO                           |
| Power Adapter       | Input: 100-240V 50/60Hz<br>Output: 5V/1A |
| Material            | ABS                                      |
| Water Tank Capacity | 2.2 L                                    |
| Dimensions          | 175*160*160 mm / 8.9 x 5.6 x 5.5 inch    |
| Net Weight          | 700g/24.7oz                              |

## Warranty

- 12-month warranty
- Life-time support

Please contact our customer service for warranty extension or any questions about the product.



This device complies with Part 15 of the FCC Rules. Operation is subject to the following two conditions: (1) this device may not cause harmful interference, and (2) this device must accept any interference received, including interference that may cause undesired operation

NOTE: This equipment has been tested and found to comply with the limits for a Class B digital device, pursuant to Part 15 of the FCC Rules. These limits are designed to provide reasonable protection against harmful interference in a residential installation. This equipment generates, uses and can radiate radio frequency energy and, if not installed and used in accordance with the instructions, may cause harmful interference to radio communications. However, there is no guarantee that interference will not occur in a particular installation.

If this equipment does cause harmful interference to radio or television reception, which can be determined by turning the equipment off and on, the user is encouraged to try to correct the interference by one or more of the following measures:

- Reorient or relocate the receiving antenna.
- Increase the separation between the equipment and receiver.
- Connect the equipment into an outlet on a circuit different from that to which the receiver is connected.
- Consult the dealer or an experienced radio/TV technician for help.

Warning: changes or modifications not expressly approved by the party responsible for compliance could void the user's authority to operate the equipment

#### Radiation Exposure Statement

This equipment complies with FCC radiation exposure limits set forth for an uncontrolled environment.

This equipment should be installed and operated with minimum distance 20cm between the radiator and your body.