

Smart Color Changing Outdoor String Lights

User Manual



Please read this carefully before using.

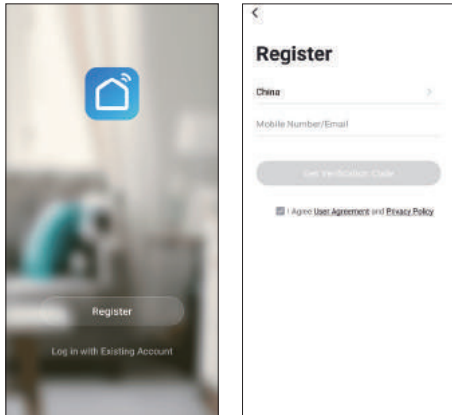
Before going to next steps, please download the APP by scanning above code or simply search keywords:"Smart Life" in the APP store or Google Play.

Model: DCWZB9A-24TC-W,
DCWZB9A-24TC-B, DCWZB9-24TC-W,
DCWZB9-24TC-B, DCWZB9A-21TC

1. Add devices in Smart Life APP

1.1 Register and Login

Open Smart Life APP and Log in your account (sign up a new account if you don't have one).



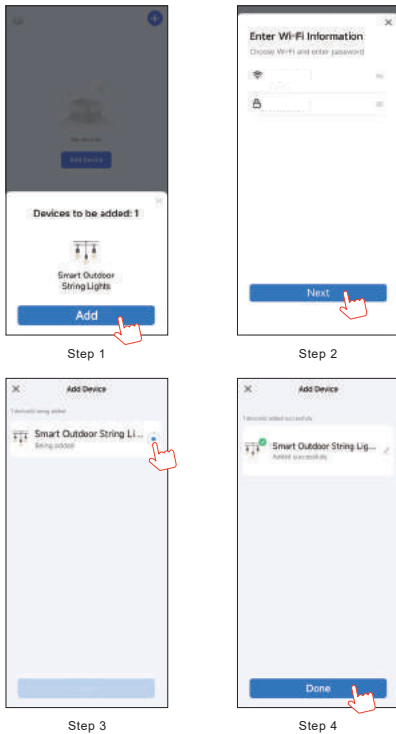
1.2 APP connection

1.2.1 Preparation jobs: Power on the LED lamp and enter the home of APP, please make sure your mobile and the smart kits are connected to the same WIFI.

1.2.2 Connect the LED lamp Solution 1):

(1) The LED lamp will flash after powered on, tap the button of "Add all devices" on the APP. The APP will popup an interface with a tips about the info of the LED lamp, tap the "Add" button, it will shows the interface of "Bluetooth devices", then tap the "+" to next interface and log in with the WiFi password, the devices turn to connecting automatically.

(2) just wait until pairing success and tap "Done" to enter into the mode control interface. (If solution 1 not suitable for your devices, please try solution 2)

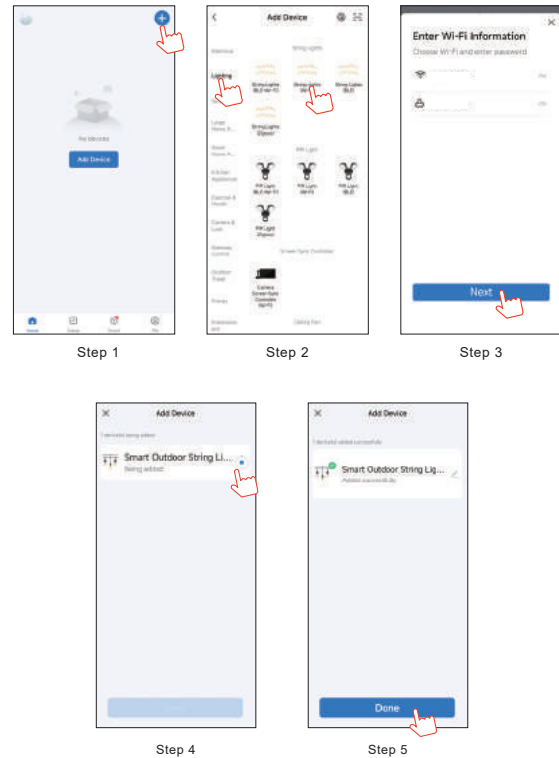


Solution 2):

(1) The LED lamp will flash after powered on, tap the button of "Add all devices" on the APP. Enter into the interface of "Add manually" and choose "Lighting" then the corresponding "LED lamp".

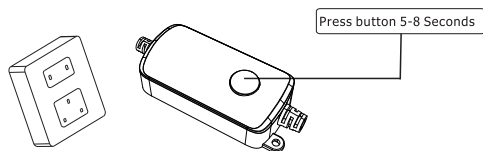
(2) We will turn to the interface of devices pairing, log in the correct WiFi name and password and tap "Next" (make sure all devices should be connected to the same WIFI).

(3) Make sure the LED lamp is under quick flash status, then tap "Next" to start pairing. Just wait until pairing success and tap "Done" to enter into the mode control interface

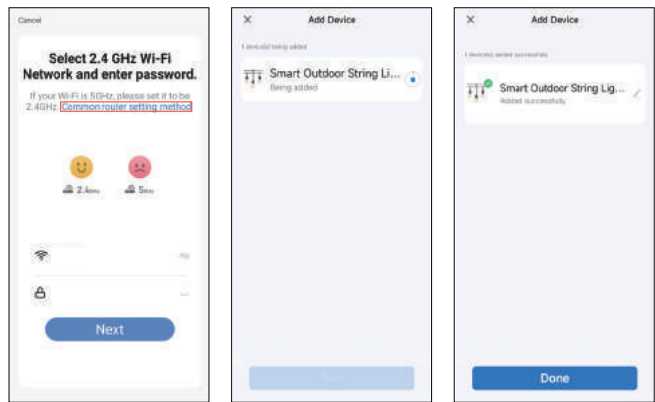


3. When the LED lamp not quick flash after powered on. Please press the switch button for over 5-8 seconds, then the light turn to quick flash, enter into the APP and choose to add all the device in the corresponding room in the APP. Enter into the interface of adding lighting device and match the LED lamp

How to make the color changing string lights into blinking rapidly status and get ready to pair to the smart life APP?

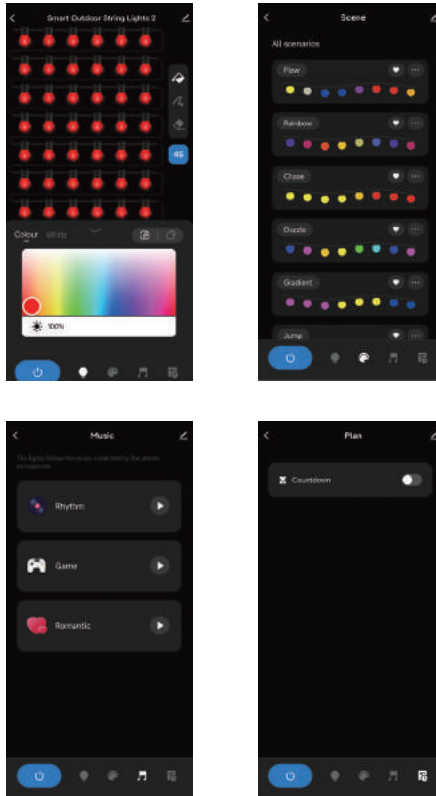


1. Power on the color changing string lights
2. Long press the round button on the power adapter for 5-8 seconds
3. During long press the button, when all bulbs appear and blinking rapidly in Red color Lights are ready to pair, go back to your smart Life APP.
4. Enter WiFi password, tap the "next" and wait till the pairing process is done. (Important tip: The Smart Life APP only support 2.4GHz signal, the pair process would be failed under 5GHz signal).

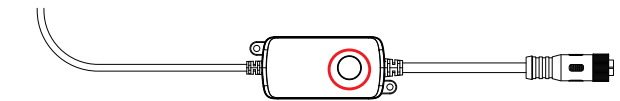


Interface Introduction:

The app operating page of string light has a variety of color selection methods, which can select color individually, select color as a whole, turn off the bulb individually, and adjust the brightness.

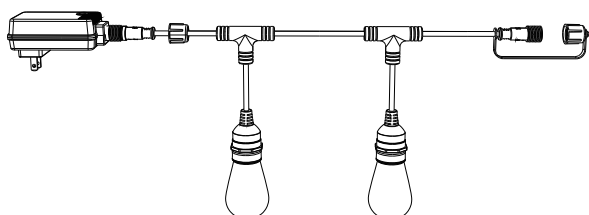


5. Button Function Description:
Control: single press: power on-Mode Adjust
double press: power off
long press 5 seconds: reset

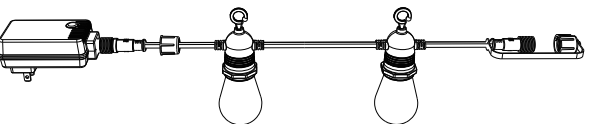


Wiring diagram

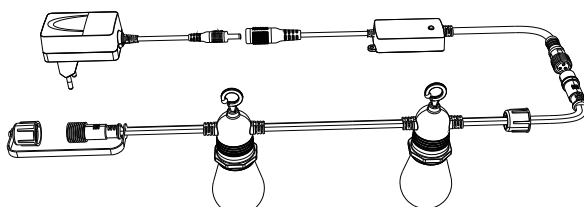
Model No:
DCWZB9A-24TC-W, DCWZB9-24TC-B



DCWZB9A-24TC-W, DCWZB9A-24TC-B



DCWZB9A-21TC



The picture is for reference only, it will be subject to the actual product.

Attentions

1. Do not cover any metal parts on the power supply to avoid affecting the control signals.
2. This product should not be used in water, be careful of electric shock.
3. Before replacing, please unplug the adapter and let it cool to avoid electric shock or burns.
4. Do not overload! When connecting a string of lamps, the overall maximum power capacity is 45 bulbs (maximum).
5. Please stop twisting the bulbs once the bulbs have been lighten enough, otherwise, it will slip.



For outdoor use, install in a waterproof socket!

Remote Control Function description:

Remote operation instructions:

This RGBW string light has memory function.
Every time when you turn on the light, it will start as the lasttime when you turn off.

[Important] Request Code Matching Before Using the Remote Cotroller

1. Power on the light and pair the remote controller with the light within 30 seconds
2. and press the button of "Multi"+"Random" for over 5 seconds at the same time
3. When the lights flash, it means the pairing successfully.

1	ON	ON
2	OFF	OFF
3	★	Brightness Increase
4	⚙	Brightness Reduction
5	+	Speed Up
6	-	Speed Down
7	Static Color	Red→Green→Blue Yellow→Warmwhite→Cyan→Orange→Purple
8	Multi	Various colors
9	Random	Various colors flash randomly
10	Strobe	Switchable & random mode with background color
11	Breath	Optional Various colors breath + automatic Various colors breath
12	Flash	Switchable Various colors flash + automatic Various colors flash



4. Specification

Item	Rating	Unit
Length	48	Ft
Sockets qty.	15	PCS
Distance from main plug to first sockets	2.2	Ft
Distance from last plug to last sockets	0.82	Ft
Waterproof standard	IP65	-
Bulb materials	PET	-
Bulb voltage	DC12	V
Max load bulbs qty.	45	PCS
Input voltage	AC100-240	V
Operation temperature	-20~+45	℃
Bulb type	E26	-
Beam angle	270°	-
Optimal remote distance	48	Ft

5. Package include



CAUTIONS:

Before replacing, turn off and let it cool to avoid electrical shock or burn.
This bulb is not intended for use with emergency exit fixtures rated average life based on engineering testing and probability analysis. Risk of electric shock. DO NOT USE IT DIRECTLY IN WATER.
STRING CABLE WITH BULB IS WATERPROOF, BUT ADAPTER ISN'T. NOT COMPATIBLE WITH INCANDESCENT LIGHT. BULBS DO NOT OVERLOAD! THE OVERALL MAXIMUM WATTAGE CAPACITY WHEN CONNECTING STRING LIGHT SETS IS 45 PCS BULBS(MAXIMUM).

FCC Statement

This device complies with Part 15 of the FCC Rules. Operation is subject to the following two conditions:
(1) This device may not cause harmful interference.
(2) This device must accept any interference received, including interference that may cause undesired operation.

2.Changes or modifications not expressly approved by the party responsible for compliance could void the user's authority to operate the equipment.
Note: This equipment has been tested and found to comply with the limits for a class B digital device, pursuant to Part 15 of the FCC Rules. These limits are designed to provide reasonable protection against harmful interference in a residential installation. This equipment has been tested and found to comply with the limits for a Class B digital device, pursuant to part 15 of the FCC Rules. These limits are designed to provide reasonable protection against harmful interference in a residential installation. This equipment generates, uses and can radiate radio frequency energy and, if not installed and used in accordance with the instructions, may cause harmful interference to radio communications. However, there is no guarantee that interference will not occur in a particular installation. If this equipment does cause harmful interference to radio or television reception, which can be determined by turning the equipment off and on, the user is encouraged to try to correct the interference by one or more of the following measures:

- Reorient or relocate the receiving antenna.
- Increase the separation between the equipment and receiver.
- Connect the equipment into an outlet on a circuit different from that to which the receiver is connected.
- Consult the dealer or an experienced radio/TV technician for help.

This equipment should be installed and operated with a minimum distance of 20 cm between the radiator and your body



ISED Statement

This device contains licence-exempt transmitter(s)/receiver(s) that comply with Innovation, Science and Economic Development Canada's licence-exempt RSS(s). Operation is subject to the following two conditions:
This device may not cause interference.
This device must accept any interference, including interference that may cause undesired operation of the device.
This equipment should be installed and operated with a minimum distance of 20 cm between the radiator and your body (For Smart LED Outdoor String Lights)

Le présent appareil est conforme aux CNR d'Industrie Canada applicables aux appareils radio exempts de licence. L'exploitation est autorisée aux deux conditions suivantes :
(1) l'appareil ne doit pas produire de brouillage, et
(2) l'utilisateur de l'appareil doit accepter tout brouillage radioélectrique subi, même si le brouillage est susceptible d'en compromettre le fonctionnement.

Cet équipement doit être installé et utilisé avec une distance minimale de 20 cm entre le radiateur et votre corps (For Smart LED Outdoor String Lights).