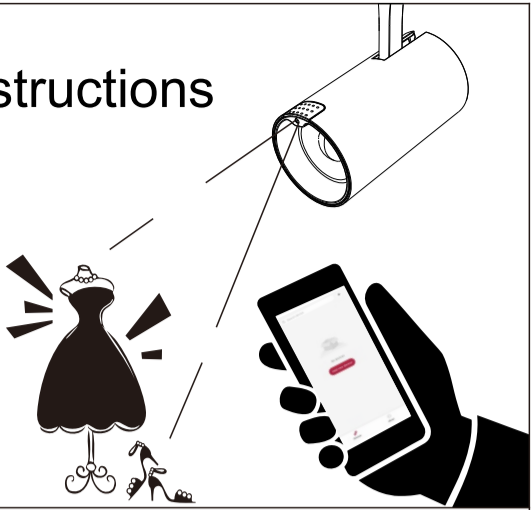


# AiScene-Track Light Instructions



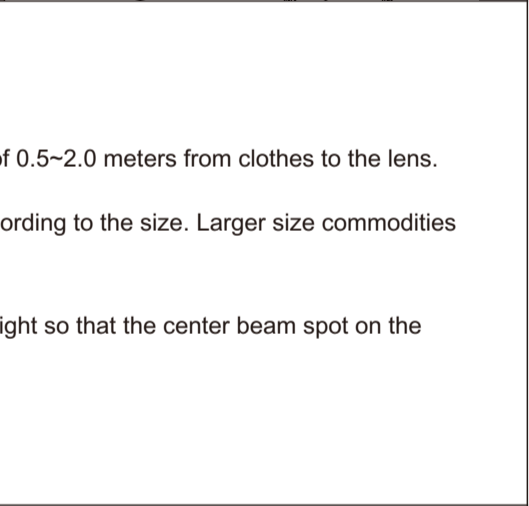
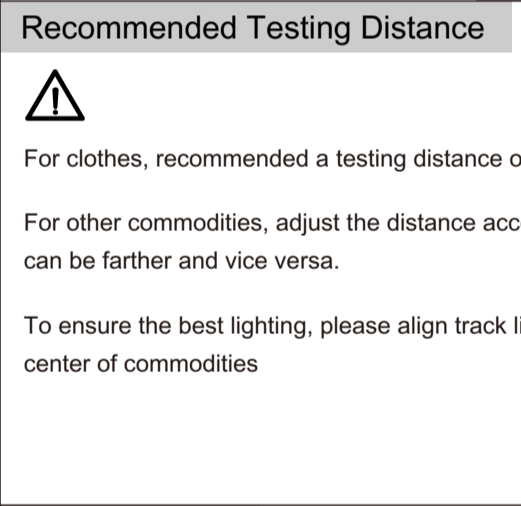
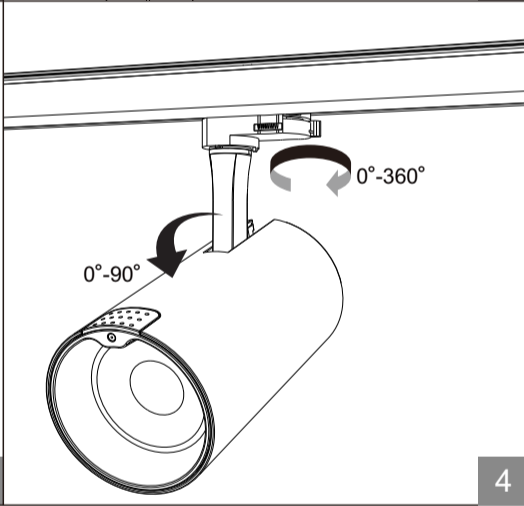
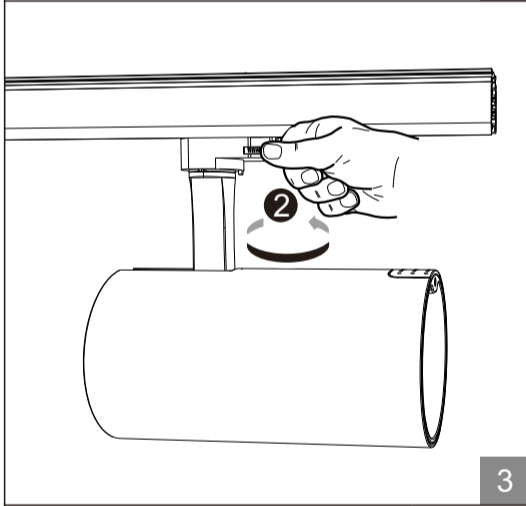
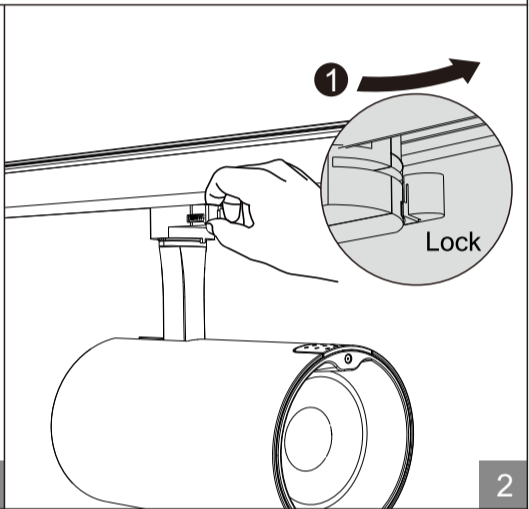
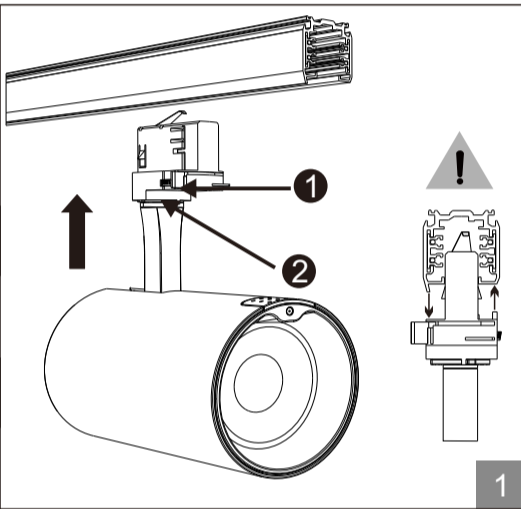
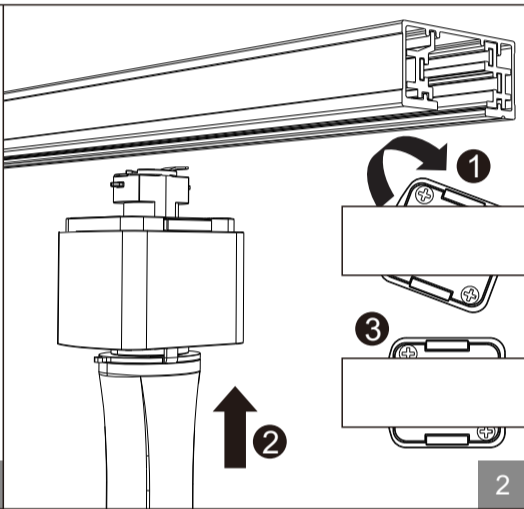
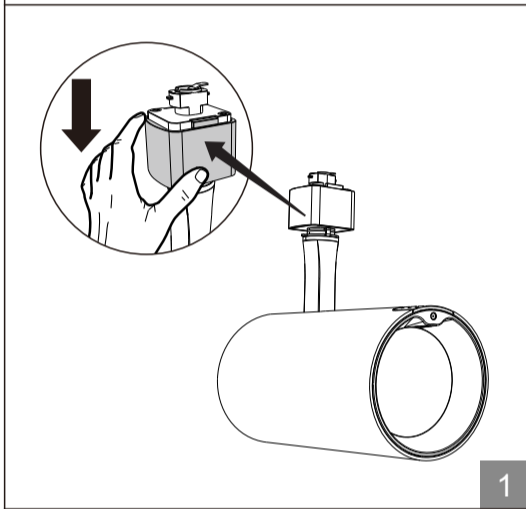
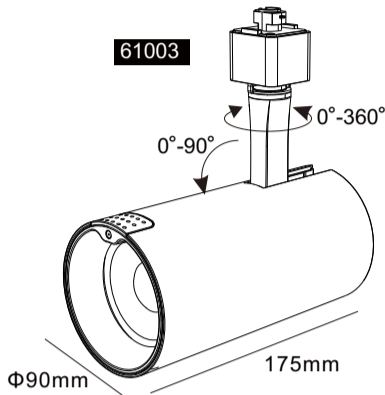
These AiSCENE™ luminaires is part of the product portfolio of the AiSCENE™ Retail platform which stands for the design of smart, automation and autonomous light color enhancement & control solutions based on Artificial Intelligent(AI) and Internet of Things in retail lighting. These AiSCENE™ Retail products equipped with sensors and powered by its brain—an AI deep learning microcontroller, they'll revolutionize retail lighting industrial.

There are always new challenges facing businesses as the retail industry rapidly changes due to technological evolution. According to study, "Personalized shopping experience" and "Ability to preview products in-person before purchase commitment" is the top reasons why shoppers still prefer brick-and-mortar. AiSCENE™ Retail platform gives you the tools you need to overcome these challenges and get started with insight business opportunities.

## Instructions



Please follow the sequence of installation step by step, Switch off the electricity before commencing installation



## Download and Install App

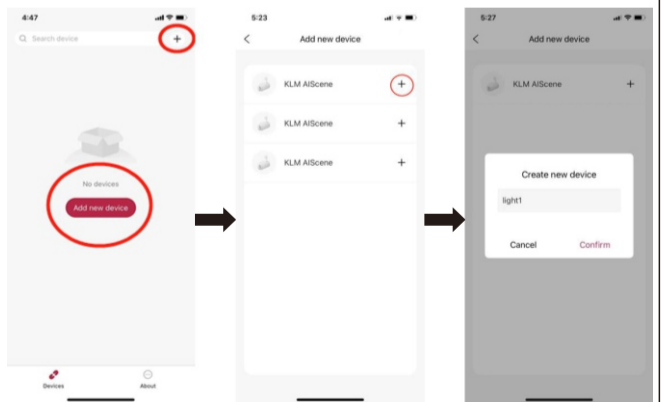
For iPhone (iPad works as well, however, interface needs to be improved), search "AiScene" from APP Store. Download and Install the APP, and open it. (Android version will be released later)



## Add devices

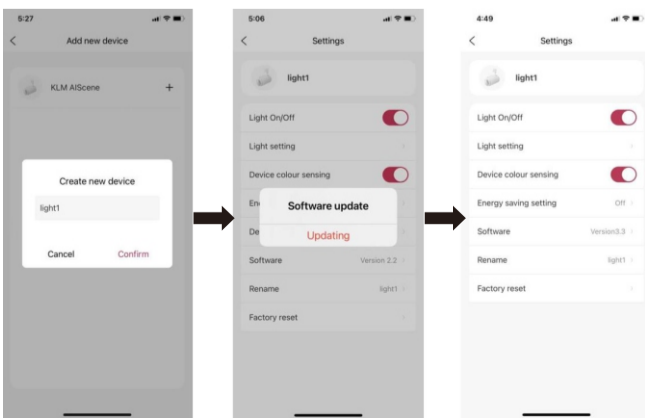
Step 1: Tap "Add new device" or "+" on the top right of this page to view all the lights within Bluetooth reach.

Step 2: Tap "+" behind the device name, The light will be flashing 5 times. Choose a light and rename the device, such as light1.



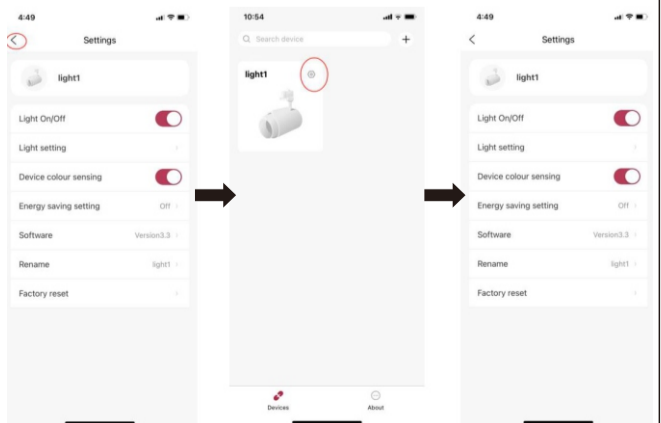
Step 3: Tap "Confirm" to finish setting. The light will flash five times to indicate the light that you just added.

Note:  
A) Once connected, it will get into the device settings page directly.  
B) Device colour sensing defaulted active for built-in sensor track light. If software update pops up, please update the software first.



## Device Settings

On the Settings page, tap top left corner to return to Devices page. Tap settings icon on the top right corner of light icon on the Devices page can also get into Settings page.



Device Settings Overview

**Light On/Off** : Turn on light or turn off light by APP.

**Light Setting** : Use APP to set the light by using a photo, or taping into "Customization" manually.

**Device Colour Sensing** : When turn on the light by APP or by switch with "Device colour sensing" on, or turn "Device colour sensing" from off to on, the colour sensor on the light will detect the commodity and output light according the commodity detected. If this function is set as off by user, the light will output the light last set when turn on the light. This item is set as on by default in factory.

**Energy saving setting** : When it is set as on and no customers are detected around the light, the light will be turned down to save energy.

This item is set as off by default in factory.

**Software**: The software on the light, tap to update it to the latest version.

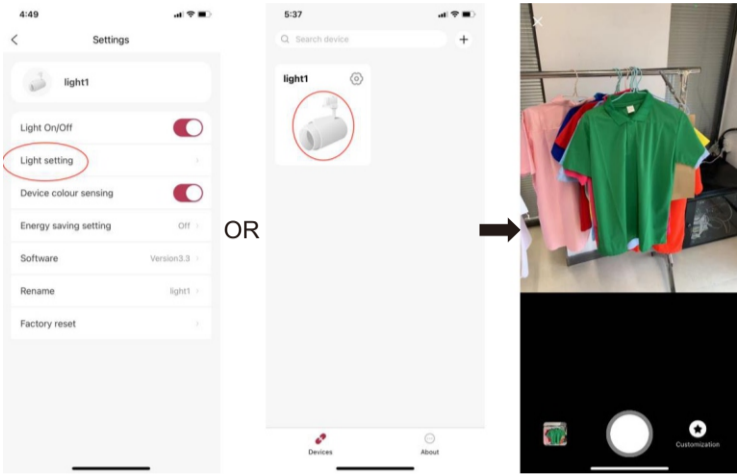
**Rename**: Rename the light.

**Factory reset** : Reset the light to factory setting, and the light will still be kept on APP.

Light Setting

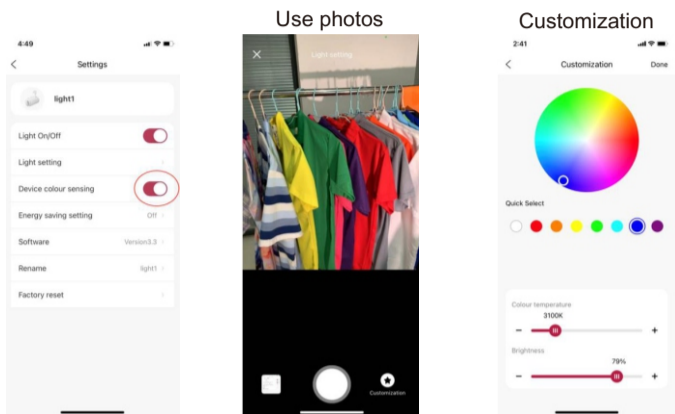
To get into light setting page, tap item "Light Setting" on device Settings page.

Or, tap the light icon to get into light setting page.



There are three ways to set the light.

Device Colour Sensing On  
(This is default, but once set light by the App, it will be disabled.)

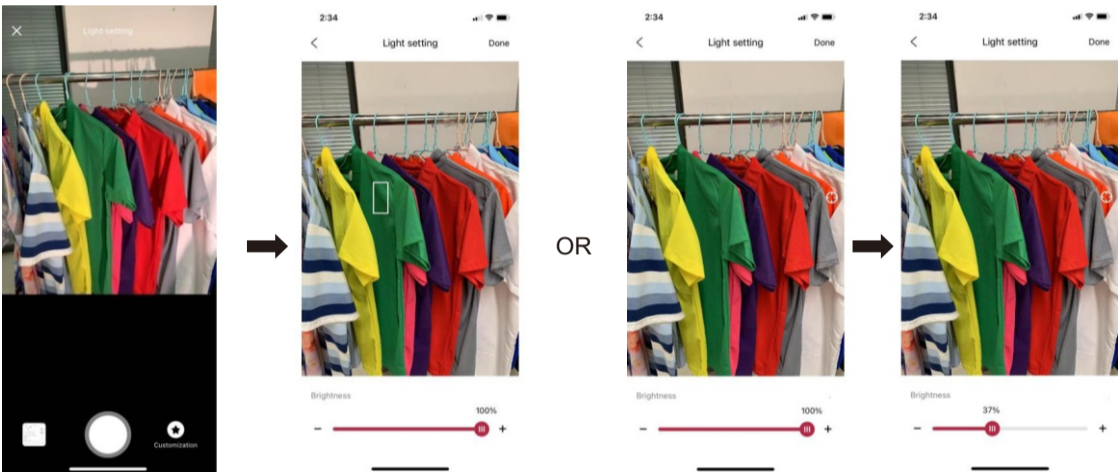


Light Setting: Take a photo

Take a photo of target commodity or choose a photo from albums. Draw a box on the target colour or tap on the target colour, and the light will be changed accordingly.

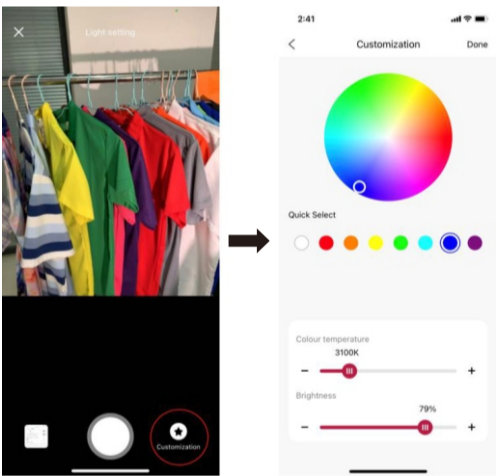
Usually drawing a box is suitable for large area of a colour or mixed colour, and taping is more suitable for choosing one kind of small area colour from mixed colours.

The brightness can also be dimmed by dragging the slider below. If return, the light will turn back to previous setting. Tap "Done", keep the setting and "Device colour sensing" will be off automatically.



Light Setting: Customization

Tap "Customization" into "Customization" page. User can tune the colour, colour temperature, saturation and brightness of the light. If return, the light will turn back to previous setting. Tap "Done", keep the setting you choose.

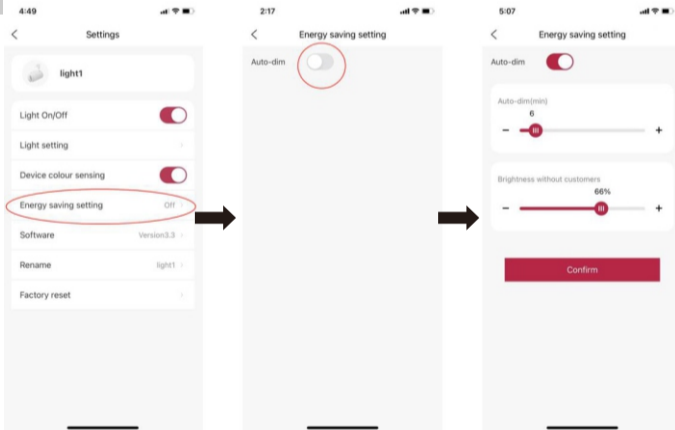


Energy Saving Setting

If customer(s) detected by the built-in sensor on the light, turn the brightness to 100%.

If no customer(s) detected, dim the light to the pre-set brightness level after a choosen time.

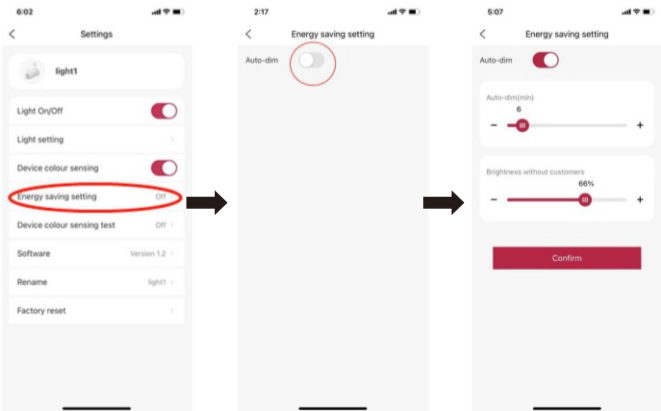
Note: This function is off by default. To activate this function, follow the instructions.



Auto-dim(min): how many minutes the light starts to dim after customers leave. The range is from 1 minute to 60 minutes.

Brightness without customers: what percentage of brightness to illuminate at the standby status. The range is from 0%-100%.

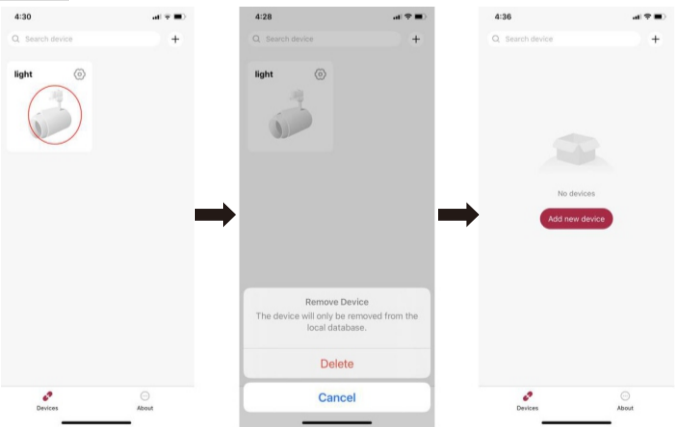
Tap "Confirm" to complete the setting. Return to abandon.



Remove a device from APP

Tap on the light icon and hold, and a menu pops up. Choose "Delete" to remove a light from your APP, and choose "Cancel" to abandon.

Note: the light will keep the settings. Other users can control it as normal one.



Ongoing & Further Development Includes

Ongoing development includes:

Don't have to dim the light while built-in sensor is sensing commodity. More details about commodities will be recognized.

Don't have to put target commodity in light beam center accurately. We use a deep learning model to find out the target commodity.

Further development by customization includes:

Heatmap: detect how many people enter the area around the light during a period based on a statistical model.

Etc

Questions & Feedback?

If you have any questions and feedback on the AiScene products or APP

Please send email to [KL37@Kinglumi.com](mailto:KL37@Kinglumi.com)

**FCC Statement:**

This equipment has been tested and found to comply with the limits for a Class B digital device, pursuant to part 15 of the FCC Rules. These limits are designed to provide reasonable protection against harmful interference in a residential installation. This equipment generates, uses and can radiate radio frequency energy and, if not installed and used in accordance with the instructions, may cause harmful interference to radio communications. However, there is no guarantee that interference will not occur in a particular installation. If this equipment does cause harmful interference to radio or television reception, which can be determined by turning the equipment off and on, the user is encouraged to try to correct the interference by one or more of the following measures:

- Reorient or relocate the receiving antenna.
- Increase the separation between the equipment and receiver.
- Connect the equipment into an outlet on a circuit different from that to which the receiver is connected.
- Consult the dealer or an experienced radio/TV technician for help.

Changes or modifications not expressly approved by the party responsible for compliance could void the user's authority to operate the equipment.

This device complies with part 15 of the FCC Rules. Operation is subject to the following two conditions:

- (1) This device may not cause harmful interference, and (2) this device must accept any interference received, including interference that may cause undesired .operation.

**RF Exposure Statement**

The distance between user and products should be no less than 20cm.