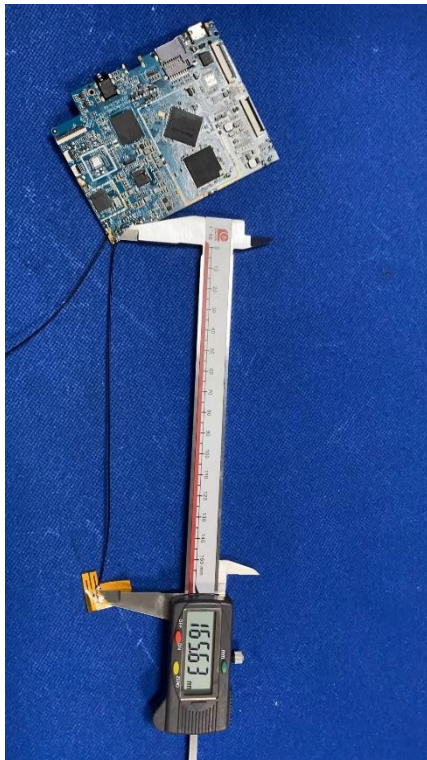


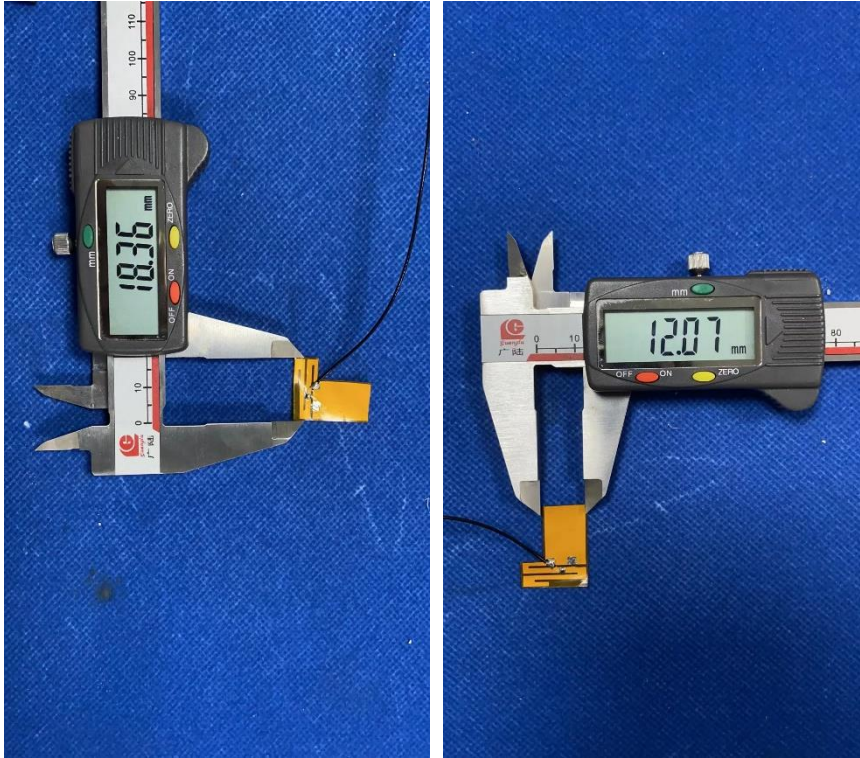
1. Antenna Description:

| | |
|-----------------|--|
| Antenna type | PIFA antenna |
| Model | AMICUS-Prime |
| Frequency range | 2402-2480MHz |
| Manufacturer | Shenzhen Huayuanlai Technology Co., Ltd. |
| ANT Peak Gain | 1.98 dBi |

2. Antenna Photo:

Length :22.62mm
Width:18.36mm





3. Test Equipment & Conditions

3.1 Test instrument

VSWR is tested using Agilent E5071B connected to a hand mechanism, and the status is free space.

3.2 Test environment and methods

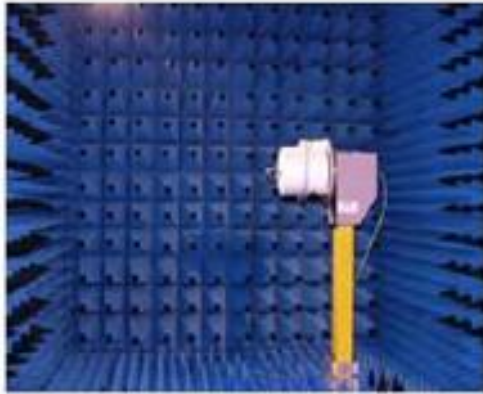
Dark room specifications: ETS-743

TD-SCDMA test equipment: StarPoint SP6010/Agilent 8960

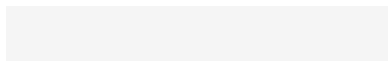
LTE-TDD/FDD-SCDMA test equipment: StarPoint SP8011/CMW500

WCDMA/GSM/CDMA test equipment: Agilent 8960

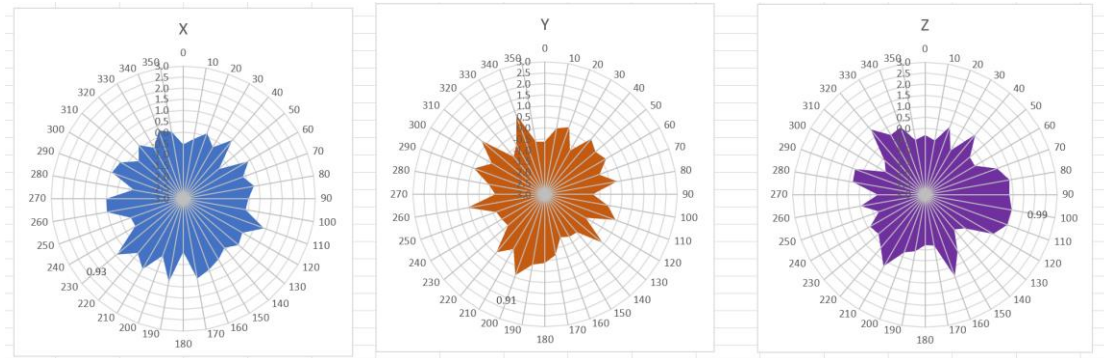
Passive efficiency testing equipment: Agilent Technologies E5071B



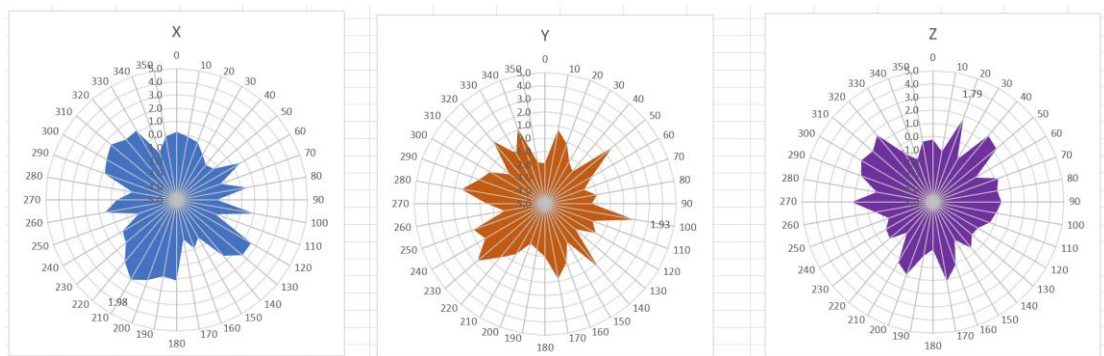
4 . Antenna Radiation Pattern



2402MHz



2440MHz



2480MHz

