

深圳力同创科技有限公司

Shenzhen Li Tongchuang Technology Co., Ltd.

NC65测试报告

Antenna Test Report

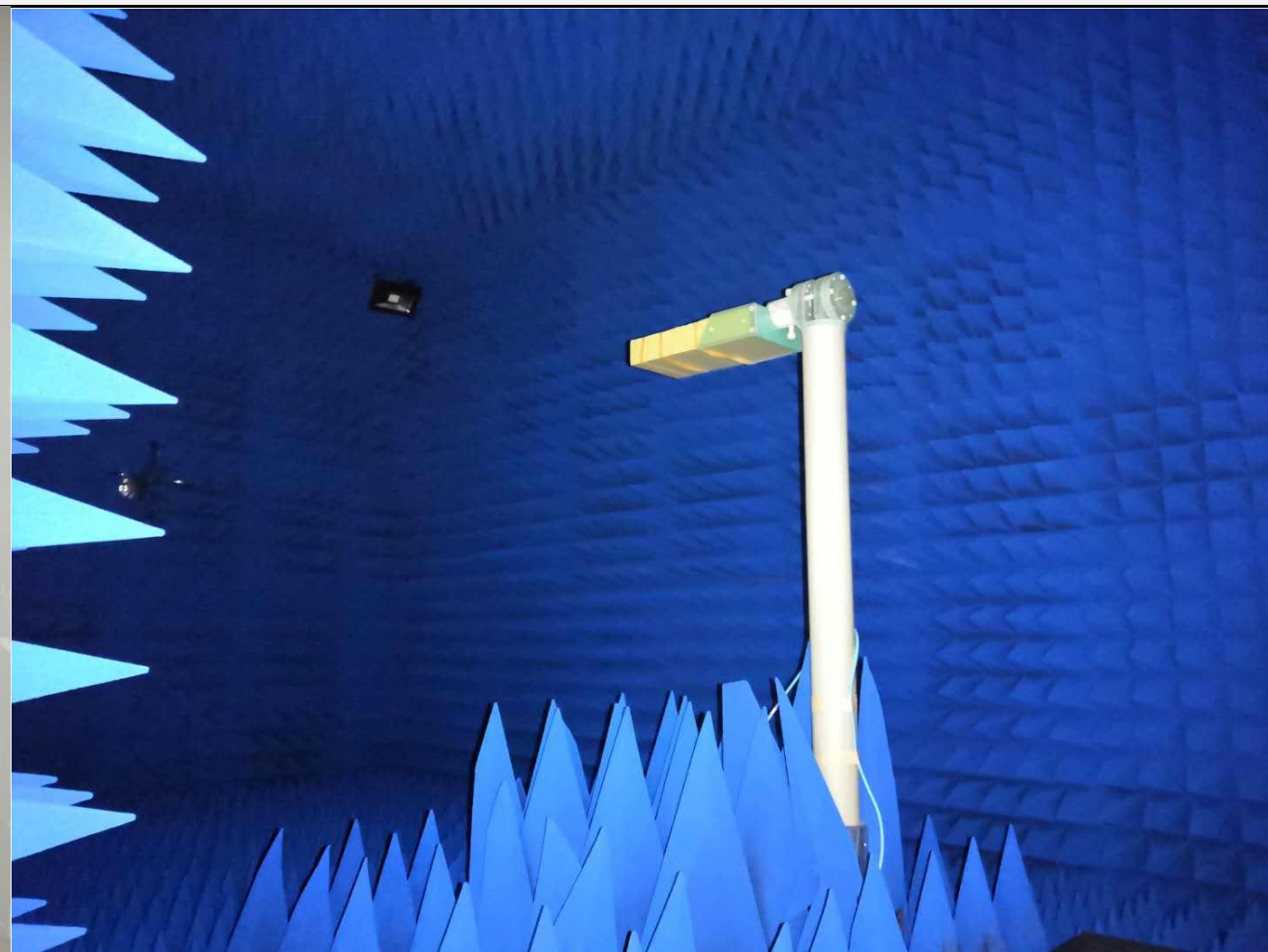
◆ 日期：2022年9月2日



| | | | |
|----|-----------------|-------|-------------|
| 客户 | 佳利得 | 项目名 | NC65 |
| 频段 | 2400MHZ-2500MHZ | 天线工程: | 黄瑞乐 |
| 日期 | 2022/09/02 | 联系电话: | 18682200138 |

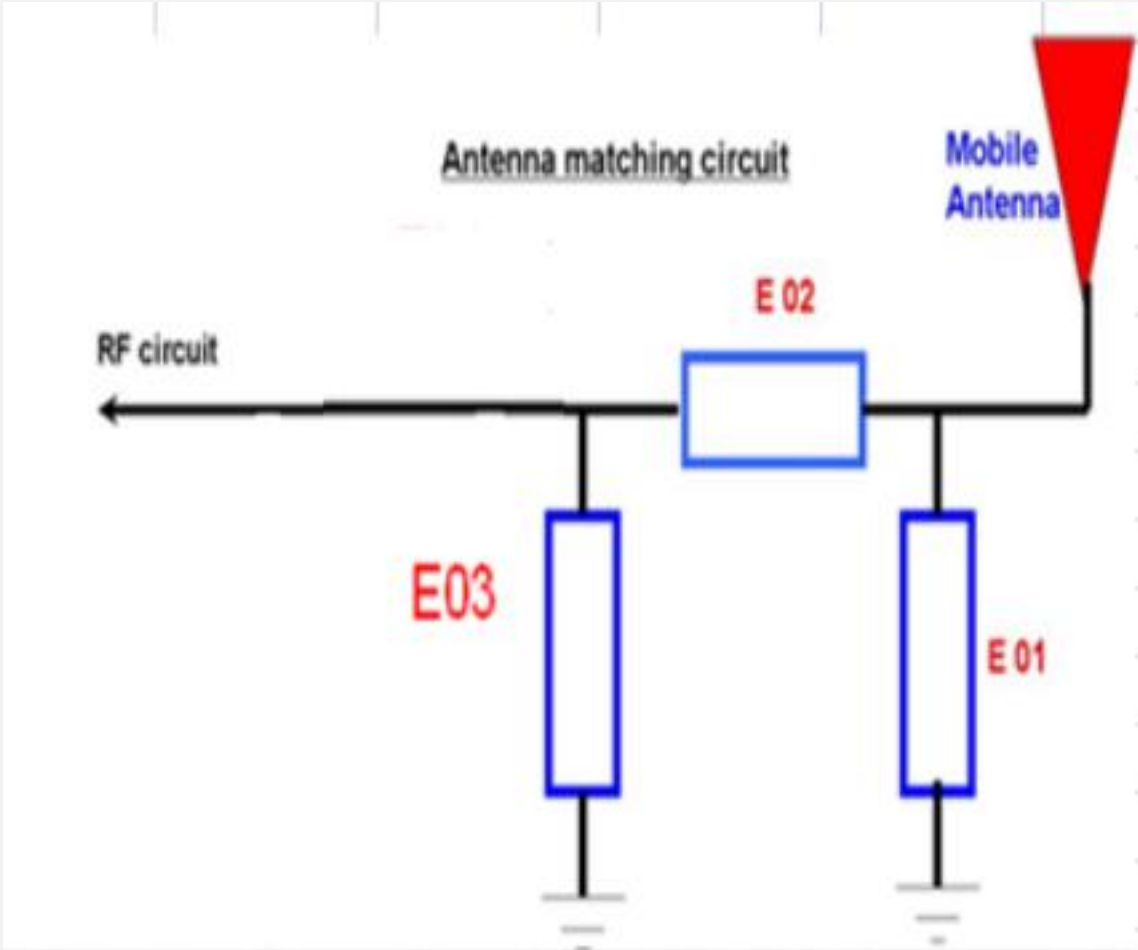
1.测试工具

| | |
|-------------|--|
| 矢量网络分析仪&综测仪 | Agelent Techmologies E5071B & R&S CMW500 |
| 暗室 | Atenlab M3 |
| 测试工程师 | 黄瑞乐 |
| 温度 | 25℃ |
| 湿度 | 65%（RH） |





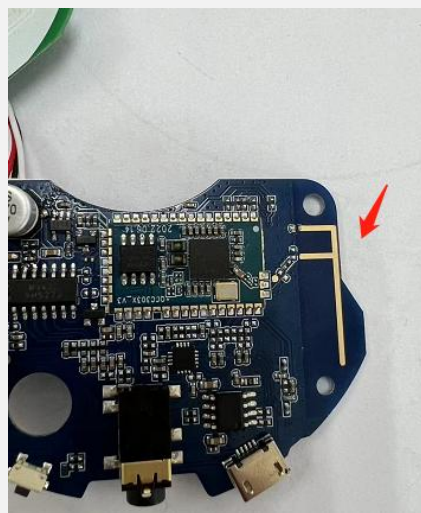
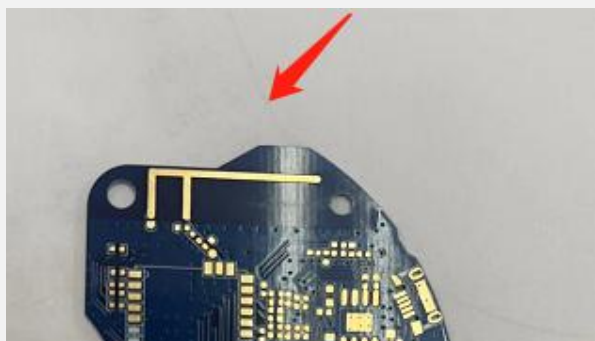
原天线匹配电路图：



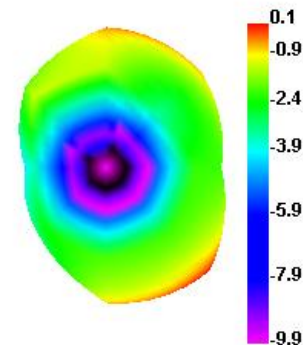
| E01 | N/C |
|-----|-----|
| E02 | OR |
| E03 | N/C |
| | |

天线增益效率

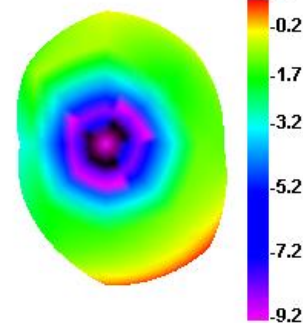
| Freq (MHz) | Effi (%) | Effi (dB) | Gain (dBi) |
|---------------|-------------|--------------|---------------|
| 2400 | 49.71 | -3.04 | 0.31 |
| 2410 | 45.26 | -3.64 | 0.36 |
| 2420 | 45.56 | -3.41 | 0.51 |
| 2430 | 51.01 | -2.92 | 0.68 |
| 2440 | 47.58 | -3.81 | 0.73 |
| 2450 | 48.9 | -3.11 | 0.79 |
| 2460 | 48.16 | -3.17 | 0.84 |
| 2470 | 48.24 | -3.17 | 0.89 |
| 2480 | 48.39 | -2.81 | 0.65 |
| 2490 | 47.76 | -4.23 | 0.44 |
| 2500 | 44.69 | -3.5 | 0.48 |



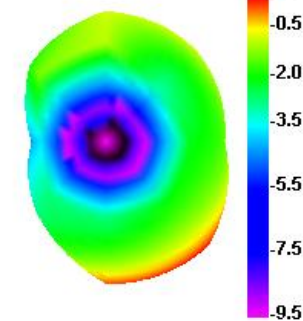
2400.000MHz



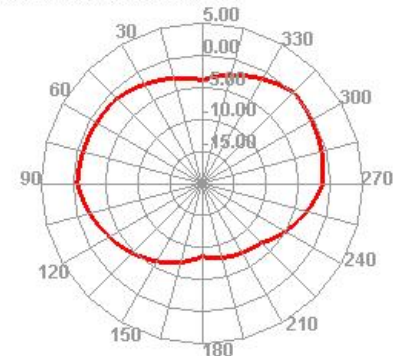
2450.000MHz



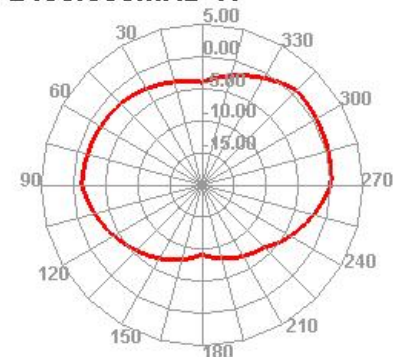
2500.000MHz



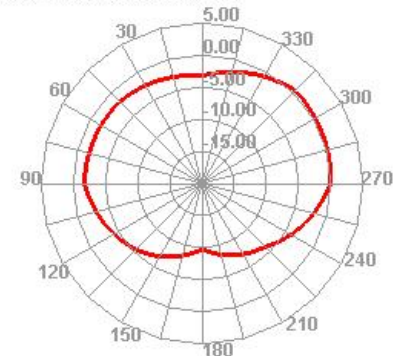
2400.000MHz H



2450.000MHz H



2500.000MHz H

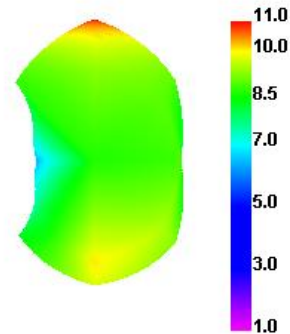




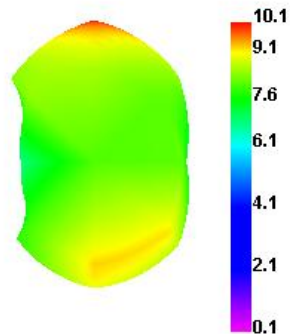
OTA有源测试数据

| ANT EIRP&EIS parameter Summary NC65 | | | |
|-------------------------------------|---------|--------|--------|
| 频段 | BT 2.4G | | |
| 信道 | 0 | 39 | 78 |
| TRP (dBm) | 4 | 6.04 | 7 |
| TIS (dBm) | -89.27 | -87.11 | -85.24 |

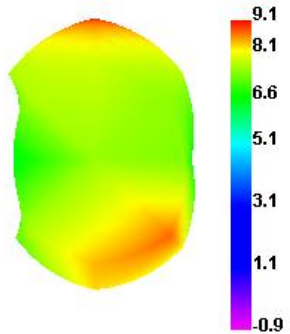
Bluetooth 0 TRP



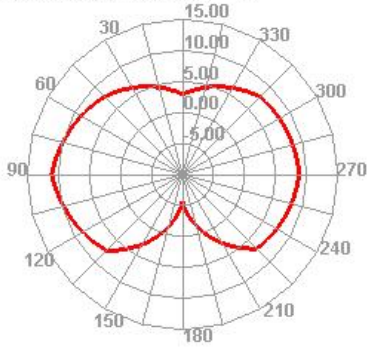
Bluetooth 39 TRP



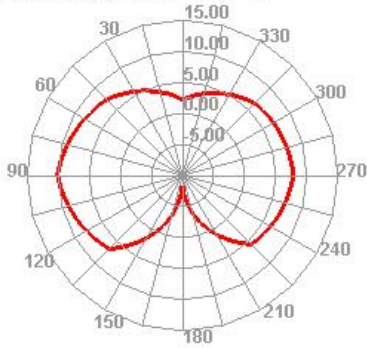
Bluetooth 78 TRP



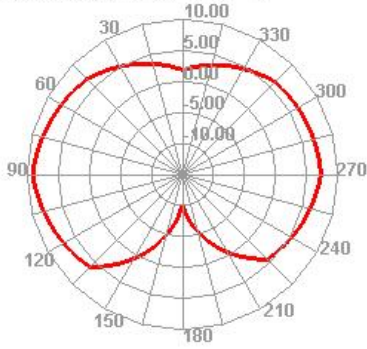
Bluetooth 0 TRP H



Bluetooth 39 TRP H



Bluetooth 78 TRP H



An aerial photograph of a city skyline, likely New York City, featuring numerous skyscrapers and the Chrysler Building. The image is partially covered by a large, semi-transparent yellow triangle that points towards the right. The text is positioned on the white background to the right of the yellow triangle.

感谢您的观看！
合作愉快