

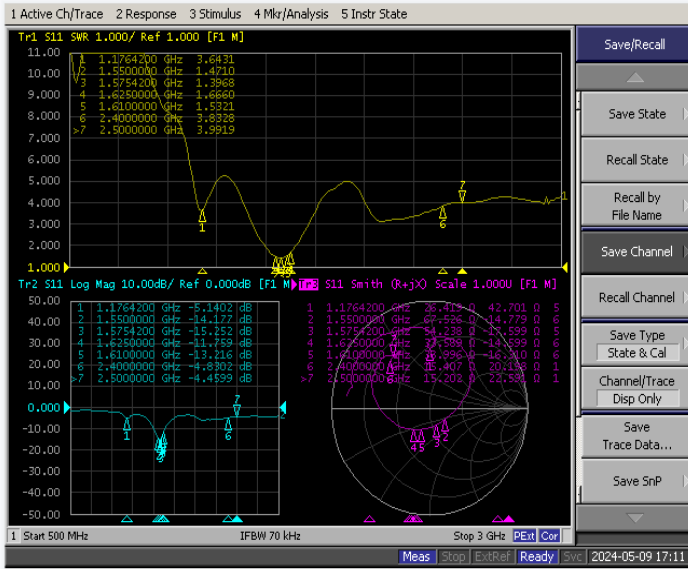


Antenna Report

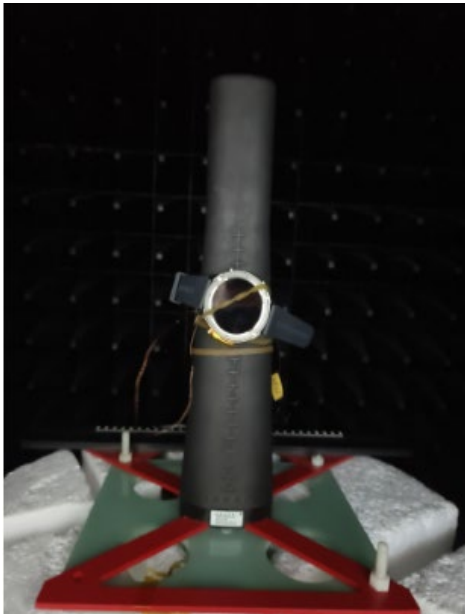
报告主要内容

天线初步调试

天线无源S11参数



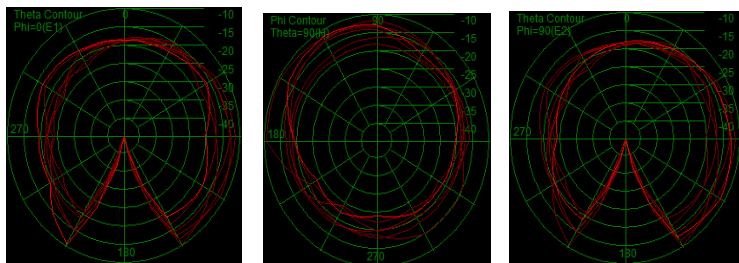
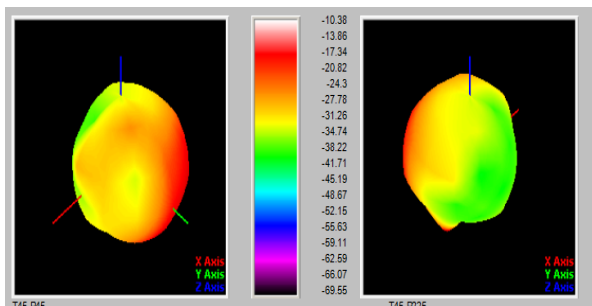
暗室测试环境



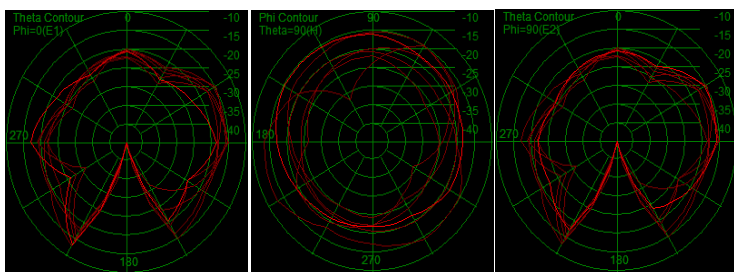
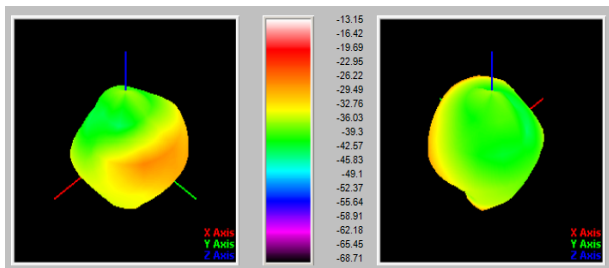
天线效率参数测试情况-

手臂测试结	频点	增益(dBi)	效率 (dB)	效率 (%)
	Freq (MHz)	Gain (dBi)	Efficiency (Efficiency (%)
	1150	-16.30	-15.7	2.7
	1155	-14.30	-15.1	3.1
	1160	-13.85	-14.6	3.5
	1165	-13.15	-14.4	3.6
	1170	-11.93	-14.7	3.4
	1175	-11.59	-15.1	3.1
	1180	-11.43	-15.5	2.8
	1505	-5.03	-11.5	7.1
	1515	-4.98	-11.4	7.3
	1525	-4.92	-11.3	7.4
	1535	-5.14	-11.3	7.5
	1545	-5.51	-11.2	7.6
	1555	-5.84	-11.1	7.8
	1565	-6.77	-11.1	7.9
	1575	-6.93	-10.8	8.4
	1585	-6.63	-10.9	8.2
	1595	-6.65	-10.9	8.1
	1605	-6.44	-11.0	7.9
	1615	-6.10	-11.1	7.8
	1625	-6.03	-11.2	7.7
	2400	-13.45	-13.3	4.6
	2420	-12.17	-13.5	4.5
	2440	-10.94	-13.7	4.2
	2460	-10.38	-14.1	3.9
	2480	-10.51	-14.4	3.6
	2500	-10.82	-14.4	3.5

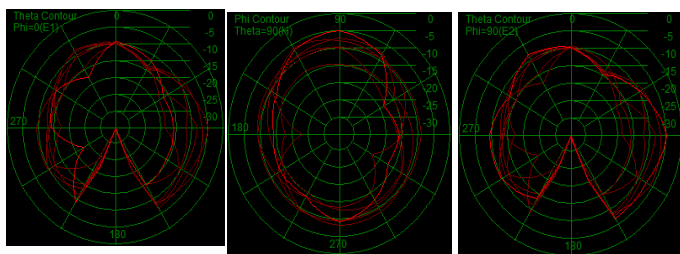
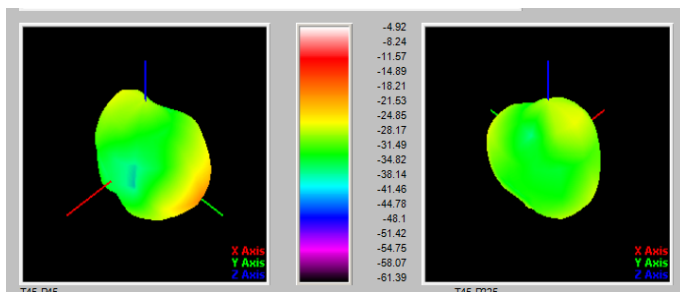
天线方向图-BT



天线方向图-GPS



如上为GPS-L1



如上为GPS-L5

Antenna picture

Antenna Size:

