

## 1. Antenna Description:

Antenna type	PIFA antenna
Model	CUL8JN
Frequency range	2400-2500MHz, 5180MHz-5240MHz, 5260MHz-5320MHz, 5745MHz-5825MHz
Manufacturer	Shenzhen Alldocube Science and Technology Co., Ltd.
ANT Peak Gain	2400-2500MHz: 1.18 dBi; 5180MHz-5240MHz: 0.88 dBi; 5260MHz-5320MHz: 1.03 dBi; 5745MHz-5825MHz: 1.25 dBi

## 2. Antenna Photo:

Length :49.40mm  
Width:24.20mm



### 3. Test Equipment & Conditions

#### 3.1 Test instrument

VSWR is tested using Agilent E5071B connected to a hand mechanism, and the status is free space.

#### 3.2 Test environment and methods

Dark room specifications: ETS-743

TD-SCDMA test equipment: StarPoint SP6010/Agilent 8960

LTE-TDD/FDD-SCDMA test equipment: StarPoint SP8011/CMW500

WCDMA/GSM/CDMA test equipment: Agilent 8960

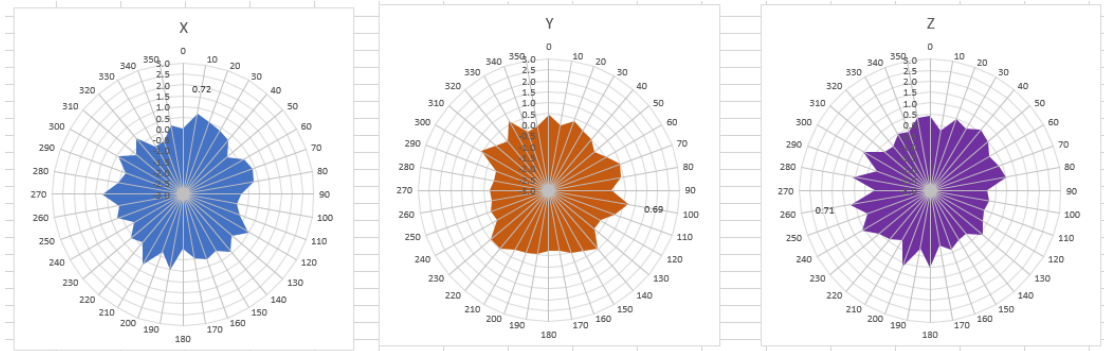
Passive efficiency testing equipment: Agilent Technologies E5071B



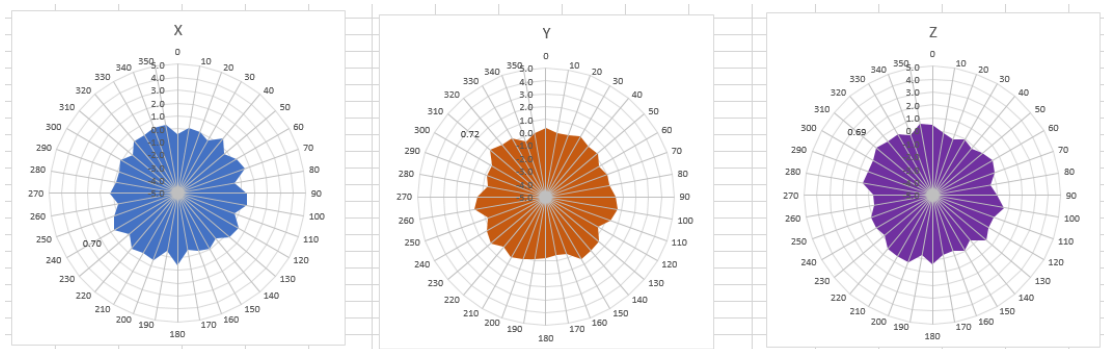
### 4 . Antenna Radiation Pattern



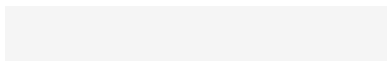
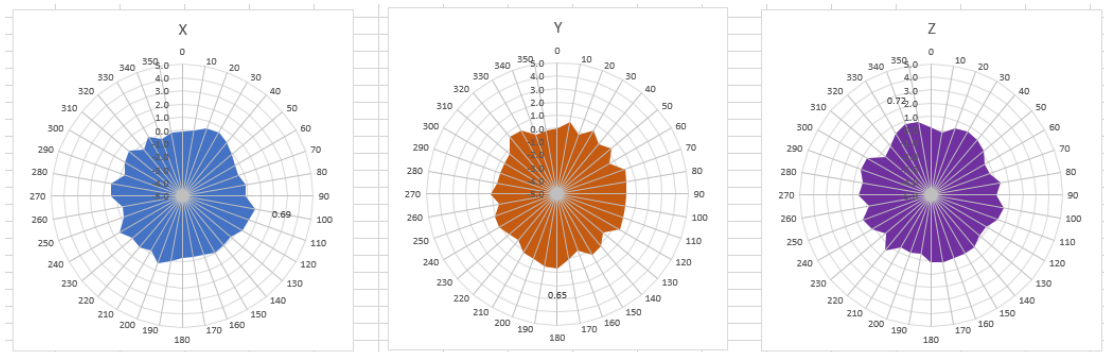
# 2400MHz



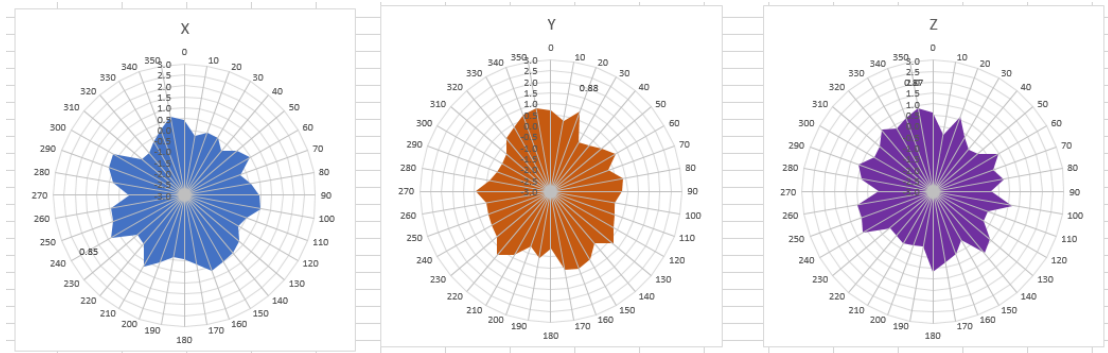
# 2450MHz



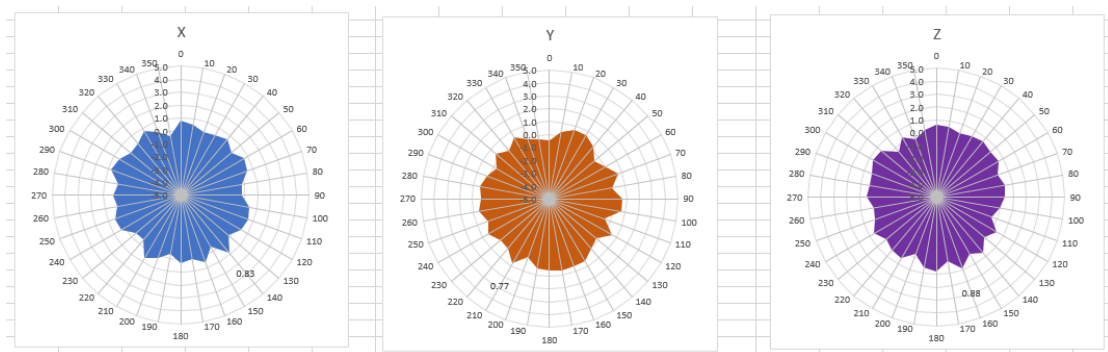
# 2500MHz



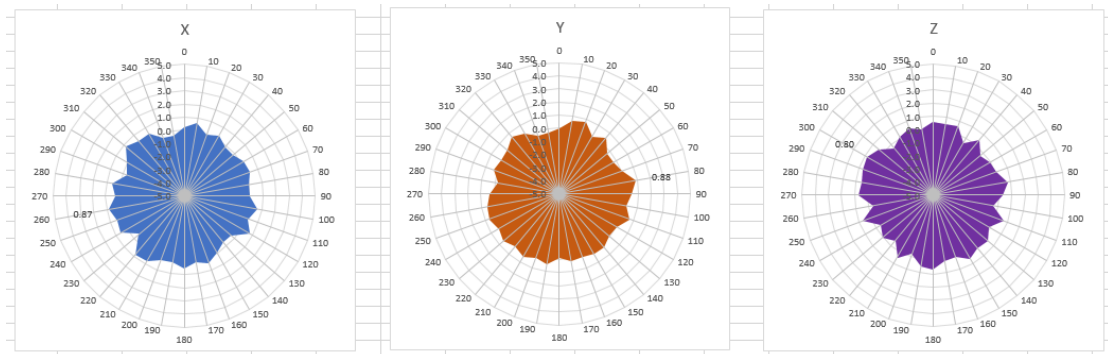
# 5180MHz



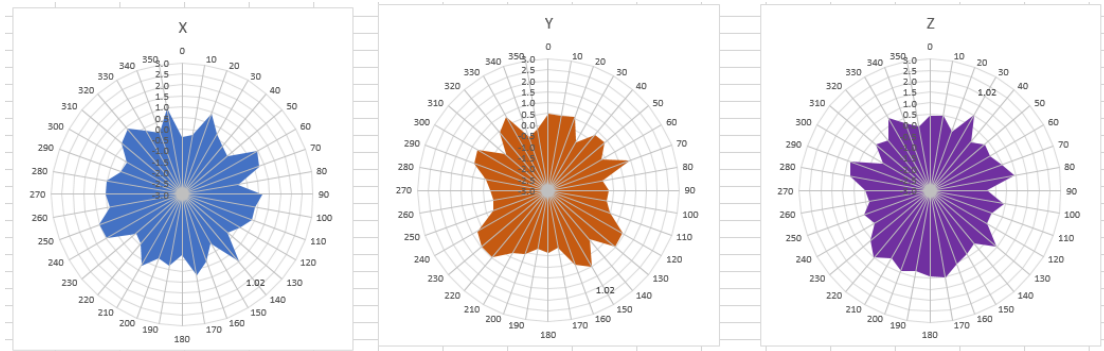
# 5220MHz



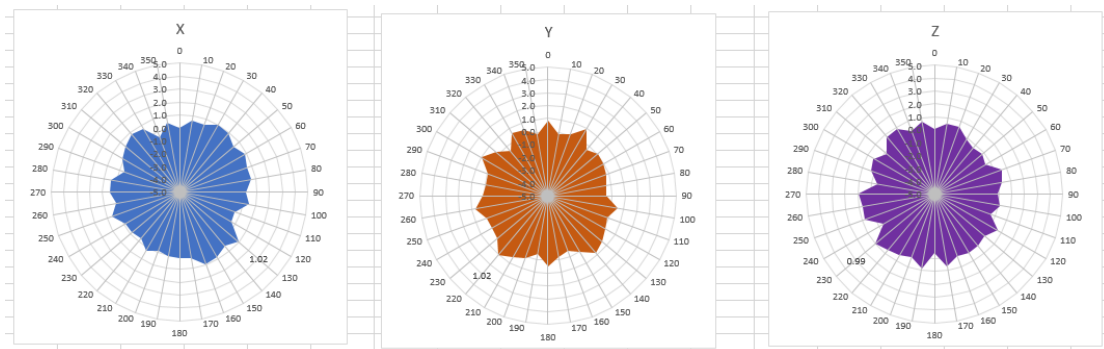
# 5240MHz



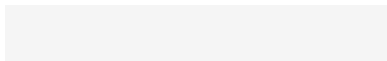
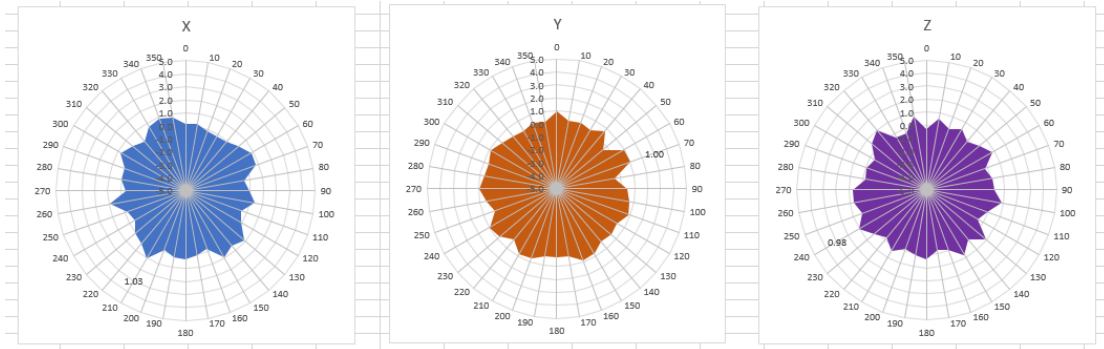
# 5260MHz



# 5300MHz

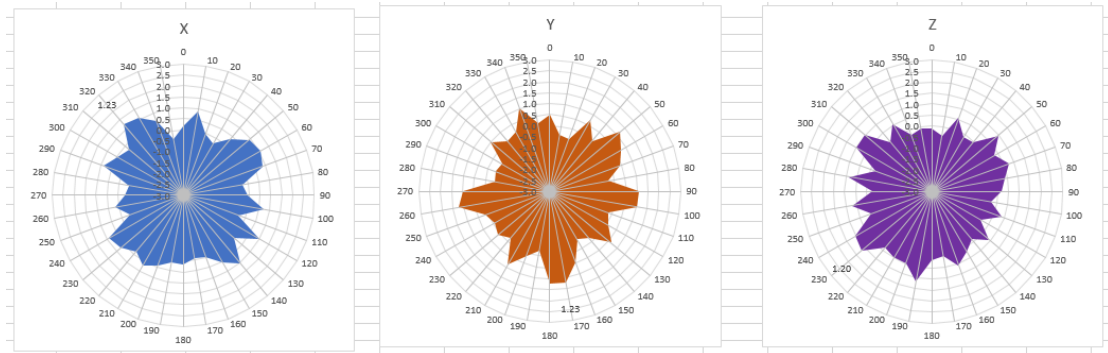


# 5320MHz

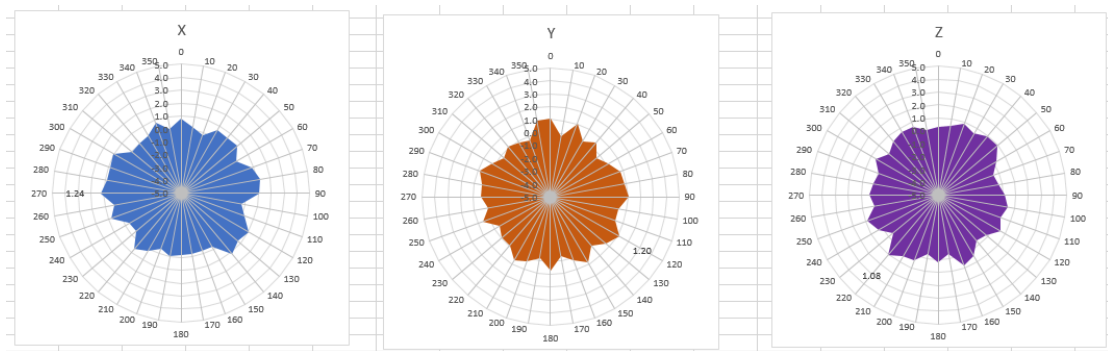




# 5745MHz



# 5785MHz



# 5825MHz

