

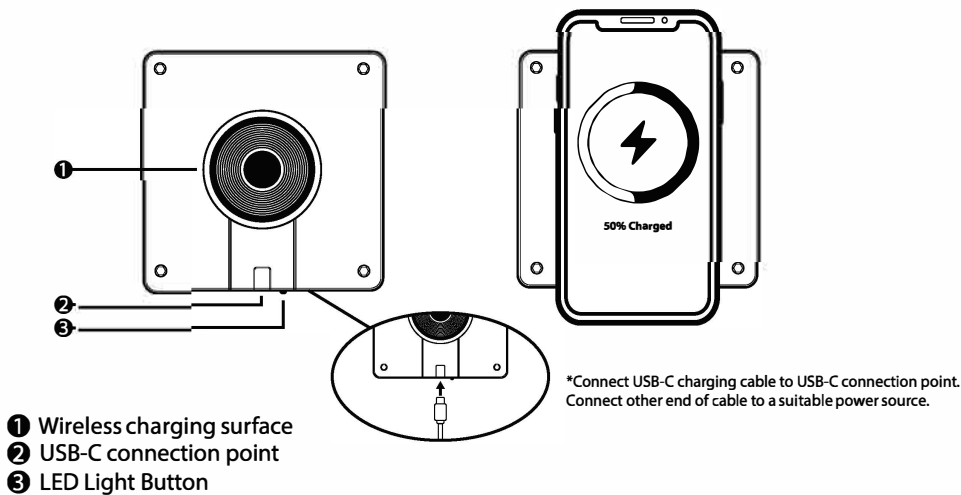
Front

LOFI wireless charger

TECH SPECS:

- Input: 5V2A, 9V2A
- Output: 15W max
- Material: Acrylic

PRODUCT OVERVIEW:



USING THE ACRYLIC WIRELESS CHARGER

Connect the included USB-C charging cable to the USB-C port on the charging pad
Plug the other end of the charging cable into an appropriate power source.
Place your wireless charging enabled device on the center of the charging pad with the screen facing up. The charging pad will glow with a green light to indicate a successful charging connection.

LED LIGHT FUNCTION

To turn on the LED light, press the LED light button.
To change the color of the LED light, press the LED light button once to cycle through each color. There are 8 total color display options.
To turn off the LED light, press the LED light button to cycle through each of the colors until the light is off.
Long press the button to adjust the light brightness.

*Note: The wireless charger will always display the green LED light to indicate a successful wireless charge connection. This function cannot be turned off. The green LED light will be illuminated for approx. 30 seconds and then it will shut off.

Back

TROUBLESHOOTING:

Device not charging

Make sure your device is wireless charging capable
Make sure the charging pad is connected to a working power source
Make sure that your wireless charging capable device is positioned properly on the top side of the charging pad
Make sure there are no other objects on the charging pad
Remove your device's case. This could block a wireless charging signal

Device charging slowly

Your device may charge more slowly with the charging pad than with a charging cable. This is normal behavior
Make sure your device is positioned in the center of the charging pad

SAFETY INFORMATION

Do not attempt to disassemble the product. It may result in short-circuit or damage
The product should be kept in a dry and ventilated environment. Do not store it in areas with high humidity or temperature
Keep out of reach of children

FCC Caution:

This device complies with part 15 of the FCC Rules. Operation is subject to the following two conditions: (1) This device may not cause harmful interference, and (2) this device must accept any interference received, including interference that may cause undesired operation.

Any changes or modifications not expressly approved by the party responsible for compliance could void the user's authority to operate the equipment.

NOTE: This equipment has been tested and found to comply with the limits for a Class B digital device, pursuant to Part 15 of the FCC Rules. These limits are designed to provide reasonable protection against harmful interference in a residential installation. This equipment generates, uses and can radiate radio frequency energy and, if not installed and used in accordance with the instructions, may cause harmful interference to radio communications. However, there is no guarantee that interference will not occur in a particular installation.

If this equipment does cause harmful interference to radio or television reception, which can be determined by turning the equipment off and on, the user is encouraged to try to correct the interference by one or more of the following measures:

- Reorient or relocate the receiving antenna.
- Increase the separation between the equipment and receiver.
- Connect the equipment into an outlet on a circuit different from that to which the receiver is connected.
- Consult the dealer or an experienced radio/TV technician for help.

FCC Radiation Exposure Statement

The equipment complies with FCC radiation exposure limits set forth for an uncontrolled environment.

During the operation of device a distance of 15 cm surrounding the device and 20 cm above the top surface of the device must be respected.

Responsible Party: Handstands Promo LLC
Company Name: HPG Brands
Address: 1770 S 5350 W Salt Lake City, UT
84104 USA
Tel: (801) 727-1400
<https://hpgbrands.com/handstands/>