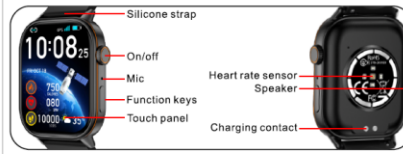




## Smart Watch User Manual

English

### Basic introduction to the product



### Basic Product Operation



1. Press the key for 3 seconds to turn on or off.
2. On the main interface, Press the screen to switch the dial.

### APP download, installation and use

1. Scan the following QR code or enter each major application market to download and install "GloryFitPro"

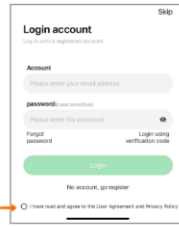
Equipment requirements: ios 9.0 and above; Android 5.0 and above

GloryFitPro

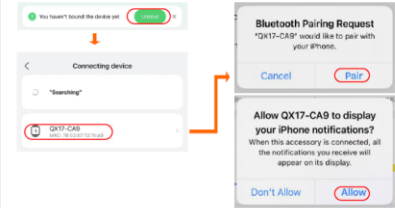


English

2. After the download is completed, start the new user registration or third-party login. And improve personal basic information



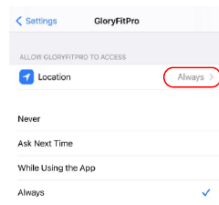
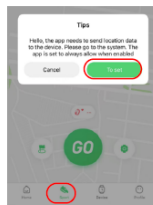
3. Start binding watch



4. After the binding is successful, start to set the functions of the watch in the APP according to your habits

English

### Important Note about GPS ★



### Basic product functions



English

### Matters needing attention

- 1, Please avoid strong impact, high temperature and exposure to the sun.
- 2, Do not disassemble, repair or modify the machine by yourself.
- 3, This machine can be charged with 5V 500MA -- 5V 2A charger. It is strictly prohibited to use the over-voltage load power supply for charging.
- 4, It is prohibited to charge when there is water stain.
- 5, This product is an electronic consumption monitoring product and is not used for medical purposes. The measured data are for reference only.

#### FCC Warning

This device complies with part 15 of the FCC Rules. Operation is subject to the following two conditions:

- (1) This device may not cause harmful interference, and
  - (2) this device must accept any interference received, including interference that may cause undesired operation. Any Changes or modifications not expressly approved by the party responsible for compliance could void the user's authority to operate the equipment.
- Note: This equipment has been tested and found to comply with the limits for a Class B digital device, pursuant to part 15 of the FCC Rules. These limits are designed to provide reasonable protection against harmful interference in a residential installation. This equipment generates uses and can radiate radio frequency energy and, if not installed and used in accordance with the instructions, may cause harmful interference to radio communications. However, there is no guarantee that interference will not occur in a particular installation. If this equipment does cause harmful interference to radio or television reception, which can be determined by turning the equipment off and on, the user is encouraged to try to correct the interference by one or more of the following measures:
- Reorient or relocate the receiving antenna.
  - Increase the separation between the equipment and receiver.
  - Connect the equipment into an outlet on a circuit different from that to which the receiver is connected.
  - Consult the dealer or an experienced radio/TV technician for help.
- The device has been evaluated to meet general RF exposure requirement. The device can be used in portable exposure condition without restriction.

#### Notice:

The company reserves the right to modify the contents of this manual without any notice. It is normal that some functions are different in specific software versions.