

6.1.5 Setting the Range of the gimbal

At the transmitter, it is possible to define the range of motion for the gimbal.

1. Place the magnetic key (a) on the cover ring (b) of the gimbal and remove it from position (c).



Fig. 6.19



Fig. 6.20



Fig. 6.21

2. Setting the Upper Motion Limit of the Throttle stick:

Insert the "allen key" into screw „E“.

Turning the screw counterclockwise increases the range of motion (see Fig. 6.22).

Turning the screw clockwise decreases the range of motion (see Fig. 6.22).

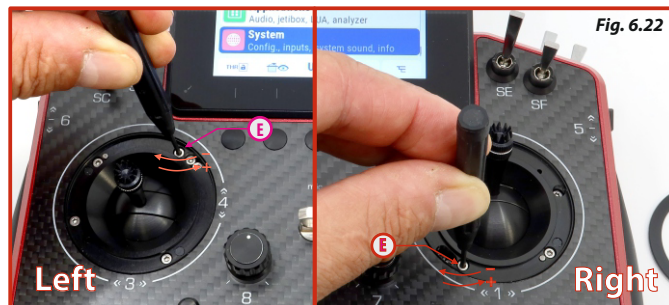


Fig. 6.22

Note: When fully loosened, the head of the screw (a) must not be higher than the seating surface of the cover ring (b) (Fig. 6.15).

Note: It is recommended to determine the desired position of the stop (end of travel) by gradually moving in the adjusted axis (during the adjustment).

Caution:

Tighten the screws with care to avoid damaging the gimbal.

3. Setting the Downward Movement Limit of the Throttle stick:

Insert the "allen key" into screw "A".

Turning the screw counterclockwise increases the range of motion (see Fig. 6.23).

Turning the screw clockwise decreases the range of motion (see Fig. 6.23).

Note: When fully loosened, the head of the screw (a) must not be higher than the seating surface of the cover ring (b) (Fig. 6.15).

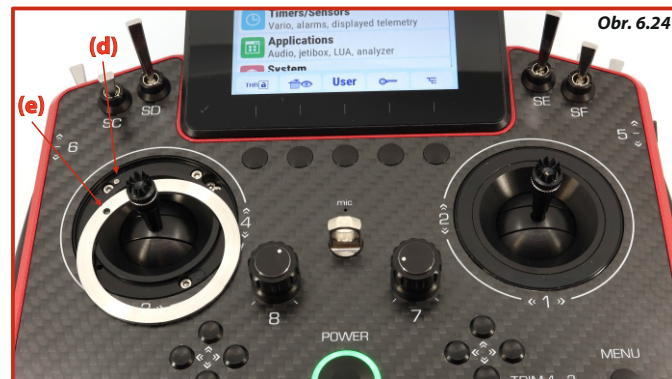
Note: It is recommended to determine the desired position of the stop (end of travel) by gradually moving in the adjusted axis (during the adjustment).



Caution:

Tighten the screws with care to avoid damaging the gimbal.

- Place the cover ring back onto the gimbal so that its groove (e) fits precisely over the locking pin (d) (in the area of adjustment screw "D" on the gimbal. Visually, the ring should lie in line with the front side of the transmitter.).



- Turn on the transmitter and in the "menu/system/input display," press the "F1" button ("Calib") and perform a new calibration of the throttle stick and its range.

6.1.6 Changing the Transmitter Mode from 1 (3) to 2 (4)

The transmitter is equipped with universal gimbals. Both gimbals are identical, and by adjusting them, the transmitter can be set to modes 1 through 4. After the mechanical adjustment, it is necessary to set the specific mode of the transmitter in the "menu/system/configuration -> Mode 1-4."

1. Place the magnetic key (a) on the cover ring (b) of the gimbal and remove it from position (c).



Fig. 6.25



Fig. 6.27



2. Deactivating the Throttle Stick and Setting the Center Position with Spring Centering:

Loosen screws „F“ and „G“ by turning them counterclockwise to the maximum, so that no locking (braking) occurs.

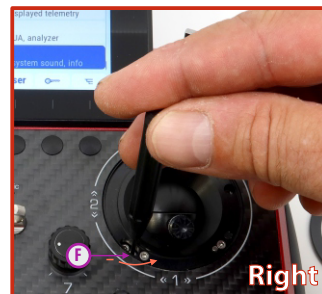
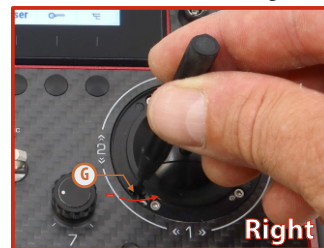


Fig. 6.28



Loosen screw „C“ by turning it counterclockwise to the maximum, which will gradually activate the center return spring. You can adjust the strength of the return spring using the adjustment screw „D“.



Fig. 6.30



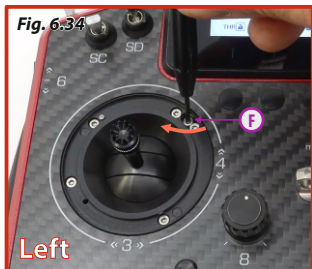
Fig. 6.31

3. Activation of the throttle stick with locking (brake) adjustment and limitation of centering using a spring:

Use the screw to reduce the strength of the return spring „D” (to avoid unnecessary tension).
Tighten screw „C” by turning it clockwise to the maximum, which will gradually deactivate the center return spring.



By tightening screws „F” (ratchet) and „G” (smooth) clockwise, adjust the locking force (brake) of the throttle stick.



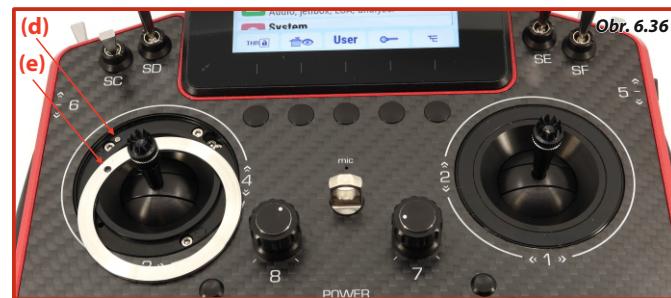
Caution:

Tighten the screws with care to avoid damaging the gimbal.

Note: When fully loosened, the head of the screw (a) must not be higher than the seating surface of the cover ring (b)



- Place the cover ring back onto the gimbal so that its groove (e) fits precisely over the locking pin (d) (in the area of adjustment screw „D”) on the gimbal. Visually, the ring should lie in line with the front side of the transmitter).



- Turn on the transmitter and in the "menu/system/input display," press the "F1" button ("Calib") and perform a new calibration of the throttle stick and its range.

6.1.7 Changing the Transmitter Mode from 2 (4) to 1 (3)

The transmitter is equipped with universal gimbals. Both gimbals are identical, and by adjusting them, the transmitter can be set to modes 1 through 4. After the mechanical adjustment, it is necessary to set the specific mode of the transmitter in the "menu/system/configuration -> Mode 1-4."

1. Place the magnetic key (a) on the cover ring (b) of the gimbal and remove it from position (c).



Fig. 6.37



2. Deactivating the Throttle Stick and Setting the Center Position with Spring Centering:

Loosen screws „F“ and „G“ by turning them counterclockwise to the maximum, so that no locking (braking) occurs.



Loosen screw „C“ by turning it counterclockwise to the maximum, which will gradually activate the center return spring. You can adjust the strength of the return spring using the adjustment screw „D“.



3. Activation of the throttle stick with locking (brake) adjustment and limitation of centering using a spring:

Use the screw to reduce the strength of the return spring „D“ (to avoid unnecessary tension).
Tighten screw „C“ by turning it clockwise to the maximum, which will gradually deactivate the center return spring.

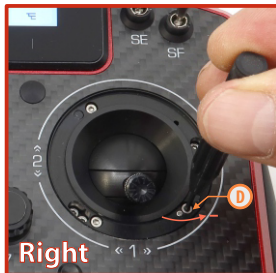


Fig. 6.44



Fig. 6.45

By tightening screws „F“ (ratchet) and „G“ (smooth) clockwise, adjust the locking force (brake) of the throttle stick.



Fig. 6.46



Fig. 6.47

Caution:

Tighten the screws with care to avoid damaging the gimbal

Note: When fully loosened, the head of the screw (a) must not be higher than the seating surface of the cover ring (b)



- Place the cover ring back onto the gimbal so that its groove (e) fits precisely over the locking pin (d) (in the area of adjustment screw „D“) on the gimbal. Visually, the ring should lie in line with the front side of the transmitter).

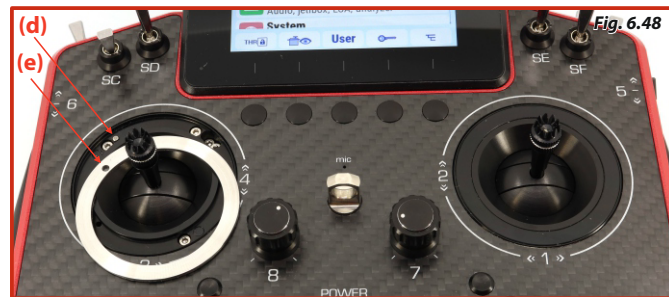


Fig. 6.48

- Turn on the transmitter and in the "menu/system/input display," press the "F1" button ("Calib") and perform a new calibration of the throttle stick and its range.