

Portable Thermal Printer User Manual

Scan to download the app



Download on the
App Store

Get it on
Google Play

Operational Video



Scan to watch the
instructional video

Driver Download



<https://www.luckjingle.com/video?type=TPA46X>

Scan the QR code for more language instructions.

English、Français、Deutsch、Italiano、Español、Português、
日本語、한국어、Bahasa Indonesia、Bahasa Melayu、
Türkçe、Русский、Dansk、Čeština、Nederlands、Svenska、
Ελληνικά、Polski、Magyar、简体中文、繁體中文、ภาษาไทย、
Tiếng Việt、Filipino、Български、Hrvatski、Suomi、Latviešu、
Lietuvių、Română、Slovenčina、Slovenščina、Eesti、Bokmål



Product Information

Product model:	TPA46X
Product weight:	516g
Product size:	266mm*59mm*31mm
Print type:	Thermal print
Input voltage:	5V \equiv 2A
Battery capacity:	1500mAh(7.4V)
Automatic shut-down:	30min
Standby time:	About 30 days
Charging time:	About 3 hours
Continuous printing:	90 sheets of tattoo printing paper
Paper width specifications:	210mm or 216mm
Charging port:	USB-C

EN

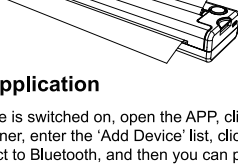
Product introduction

Open button
Power button Long press
for 3 seconds to turn
on/off



Setting the paper for printing tattoos

Pull out the interlayer paper in the middle of the tattoo printing paper then tear off the yellow paper, put the white front side neatly into the printer input port, and the printing paper will be sucked in automatically.



Connect application

After the device is switched on, open the APP, click the button in the upper right corner, enter the 'Add Device' list, click the device you want to connect to Bluetooth, and then you can print.

★Tips: When connecting, please make sure that the Bluetooth of the mobilephone is turned on, and the device is close to the mobile phone

Safety and precautions

- 1 Do not charge or use the printer in high temperature, humid or dusty places.
- 2 Please use 5V2A input to charge, you can use mobile phone power adapter to charge.
- 3 After printing, do not touch the print head directly to prevent overheating and scalding.
- 4 Please insert or pull out the charging cable gently to avoid damage to the interfacel due to excessive force.
- 5 Improper charging may cause print head damage.
- 6 Unplug the charging cable in time after charging is completed.
- 7 Place the machine on a firm and stable level to prevent the machine from slipping and being damaged.
- 8 When not using the machine for a long time. please turn off the power of the machine.
- 9 Prevent foreign matter from entering the machine, so as not to cause malfunction or other risks.

Frequently Asked Que tions

Frequently Asked Que tions

Q: When the APP adds a device, no connectable device is found?

A: Please check whether the device is turned on to ensure that the Bluetooth is working.

Q:The device cannot print, what should I do?

A:1.Confirm whether the Bluetooth of the mobile phone is turned on, and rule out the possibility of others connecting to this device.

2.Check if the tattoo printer is jammed.

3.Whether the print head is overheated, if it is overheated, please wait for the print head to cool down before trying to print.

Q: Why are all the printed pages blank with no content?

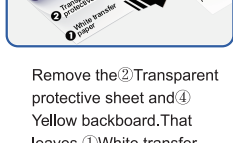
A: It may be caused by incorrect installation of the printing paper. Please refer to the introduction of replacing the printing paper to reinstaltft.

Q: Why is the printed word faded?

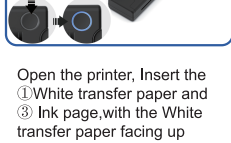
A:1.Please check if the device is low on battery.

2.Check if the print head is full of dirt, please wipe it gently with a cloth dampened with alcohol.

Tattoo Paper Operating Procedure



Remove the②Transparent protective sheet and④Yellow backboard.That leaves ①White transfer paper and③Ink page



Open the printer, Insert the ①White transfer paper and ③ Ink page,with the White transfer paper facing up

Note: Tattoo printer in the absence of paper, the indicator light will blink, this is a normalphenomenon.The quality of the transfer paper will affect the printing effect (the quality of the transfer paper is determined by the uniformity of the ink sheet)

Large multi-copy printing clipping function



Select image crop vertical plus 1, cross plus 1, you can print 4 pieces of Mosaic pattern

FCC Statement

1.This device complies with Part 15 of the FCC Rules. Operation is subject to thefollowing two conditions:

(1)This device may not cause harmful interference.

(2)This device must accept any interference received, including interference that may cause undesired operation

2. Changes or modifications not expressly approved by the party responsible forcompliance could void the user's authority to operate the equipment.Note:This equipment has been tested and found to comply with the limits for a class Bdigital device,pursuant to Part 15 of the FCC Rules. These limits are designed to providereasonable protection against harmful interference in a residential installation.

This equipment generates uses and can radiate radio frequency energy and,ifnot installed and used in accordance with the instructions,mayharmfucauseinterference to radio communications.However,there is no guarantee that interferenceWll not occur in a particular installationif this equipmment does cause harmfuinterference to radio or television reception,which can be determined by turning theequipment off and on,the user is encouraged to try to correct the interference by one ormore of the following measures.

- Reorientor relocate the receivina antenna.
- Increase the separation between the equipment and receiver.
- Connect the equipment into an outlet on a circuit different from that to which thereceiver is connected.
- Consult the dealer or an experienced radio/TV technician for help.

The device has been evaluated to meet general RF exposure requirement

The device can be used in portable exposure condition without restriction.