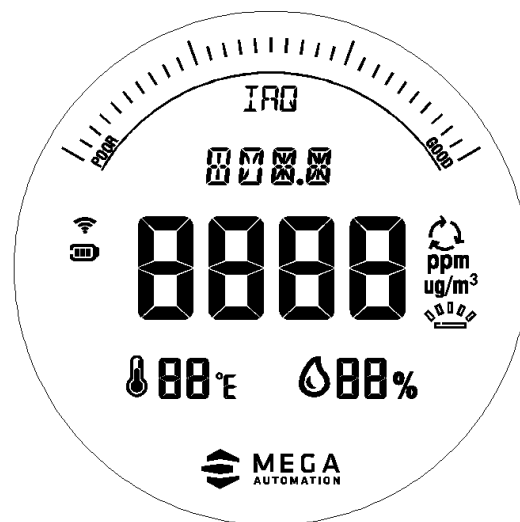


A. major function

- 3 function keys: TOUCH keys [Touch], [POWER/LIGHT] and [Cycle];
- 4 digits display data;
- IAQ air quality is GOOD, Moderate and POOR;
- IAQ power supply sampling period is 5 seconds
- PM2.5 display range of pm: 0-500ug/m;
- PM10 display range: 0-500 ug/m;
- TVOC display range: 0-9999 ug/m;
- HCHO display range: 0-1230ug/m;
- **CO2 display range: 0-5000 ppm;**
- Indoor temperature detection range:-9°C ~ 50°C; Ambient humid
- Temperature and humidity sampling period is 60 seconds.
- Low electric indication; If there is one battery left, turn it off and
- Charging indication, charging icon flashes during charging;
- Battery power supply, LED backlight delay for 30 seconds;



B. Power-on & reset

- When it is powered on or reset, the LCD is fully displayed for 3 seconds, and the backlight lights up for 30 seconds to start displaying data;
- The accurate data needs to be turned on for 3 minutes before it can remain stable.

C. Operation and display

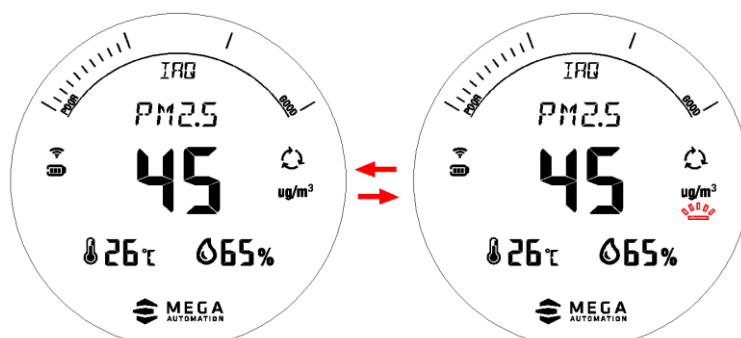
1. Key function

- 3 function keys: TOUCH keys [Touch], [POWER/LIGHT] and [CYCLE]

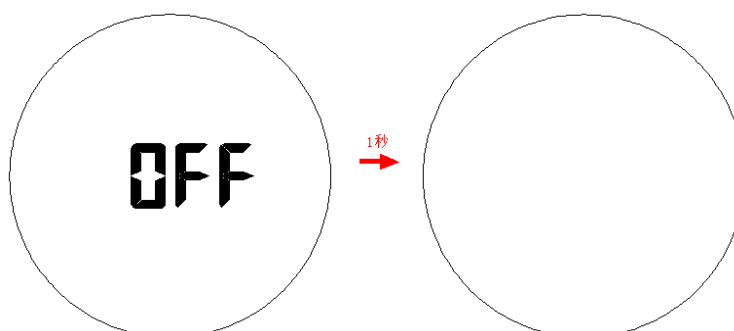
	【TOUCH】	【POWER/LIGHT】	【CYCLE】 / WIFI
Singl e press	Battery power illuminates backlight for 30S. 2.5-PM10-CO2-HCHO-TVOC data display switching	Press to enable the light to stay on.	Switch PM2.5-PM10-CO2-HCHO-TVOC data cycle display
Press for 3 secon ds.	---	Switch machine	WIFI distribution network

2. Key operation

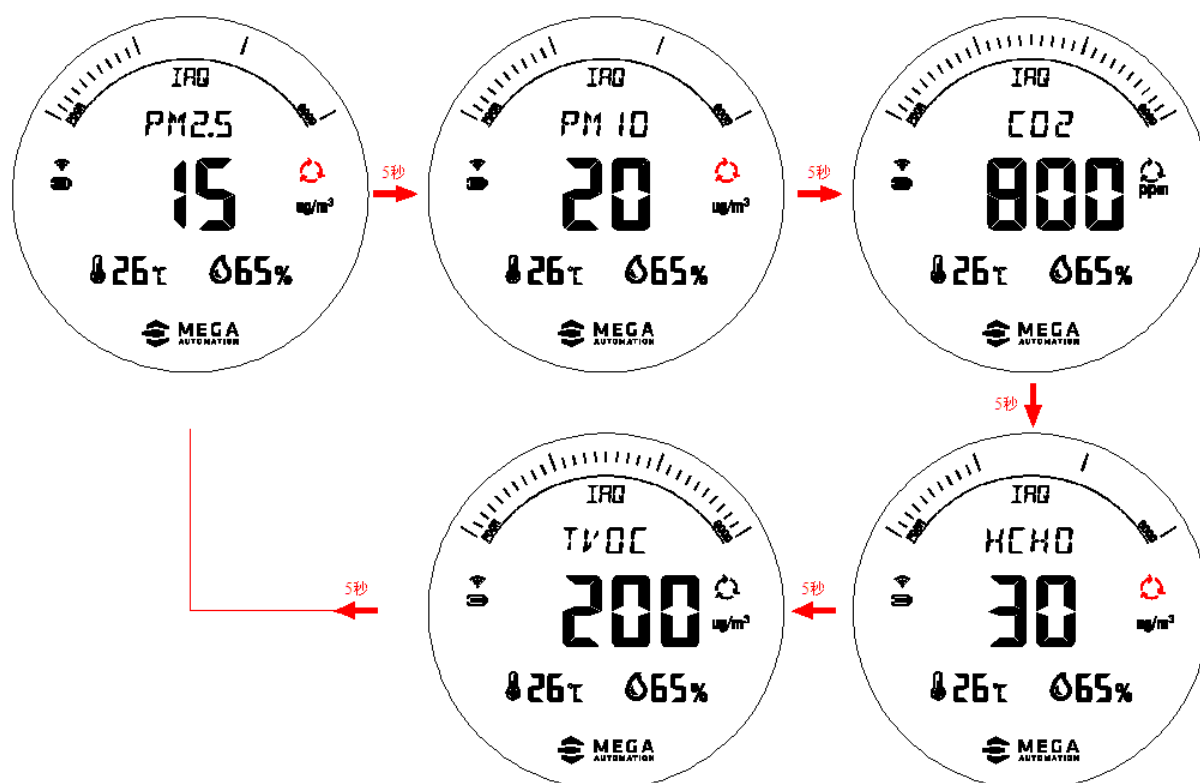
- Press the [TOUCH] button, the backlight will be lit for 30 seconds by battery power, and the PM2.5-PM10-CO2-HCHO-TVOC data display will be switched;
- Press the [POWER/LIGHT] switch to enable the light to stay on; MARK is a light indicator icon.



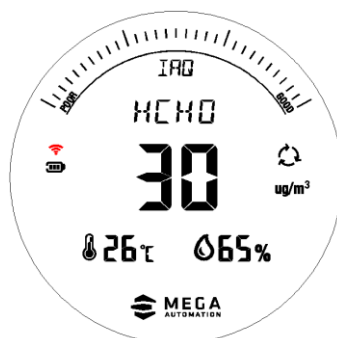
- Press [POWER/LIGHT] for a long time to switch on and OFF, and the shutdown will show off. Shut down after 1 second, shutdown interface diagram



- Press [CYCLE] to display the cycle icon, and the data is displayed in cycle at PM2.5-PM10-CO2-HCHO-TVOC, with a cycle interval of 5 seconds. Press once to turn off the cycle display, and the default is the cycle mode, with the icon in red.



- Press and hold [Cycle] for 3 seconds to turn on or reset the WIFI network (it will not turn off), and the red WIFI symbol.



D. Function and effect description

1. TVOC/CO2/PM2.5 data

	Good	Moderate	Poor
PM2.5	0-15 ug/m ³	15-40 ug/m ³	>40 ug/m ³
PM10	0-20 ug/m ³	20-100 ug/m ³	>100 ug/m ³
CO2	0~800ppm	800~1000ppm	>1000ppm
HCHO	0-30 ug/m ³	30-100 ug/m ³	>100 ug/m ³
TVOC	0-200 ug/m ³	200-600 ug/m ³	>600 ug/m ³

- ✎ CO2 1000ppm means that the air concentration of carbon dioxide reaches 1%
- ✎ The detection of CO content in serum (plasma) is one of the indexes of metabolic acidity and alkalinity, which basically represents the situation of acid-alkali reserves in plasma. When the volume fraction of carbon dioxide in the air is 1%, I feel stuffy, dizzy and palpitation; 4%-5% feel dizzy; More than 6% will make people delirious, gradually stop breathing and cause death. The density of carbon dioxide is higher than that of air. When carbon dioxide is low, it is harmless to human body, but when it exceeds a certain amount, it will affect people's breathing (other organisms too). The reason is that the concentration of carbonic acid in blood increases, acidity increases, and acidosis occurs.

2. IAQ air quality grade

- ✎ GOOD: when all five indicators are Good, the IAQ level is GOOD, and the LED lights are green.
- ✎ Poor: When any of the five indicators is POOR, IAQ level is POOR, and the LED lights are red.
- ✎ Moderate: others are Moderate, and the LED lights are yellow.

3. Temperature and humidity function:

- ✎ Indoor temperature range: -9°C ~ 50°C, HH.H is displayed above 50°C, and LL. L is displayed below -9°C;
- ✎ Indoor humidity range: 20-99%; More than 99% show HH and less than 20% show LL;
- ✎ Indoor temperature detection period: 60 seconds.

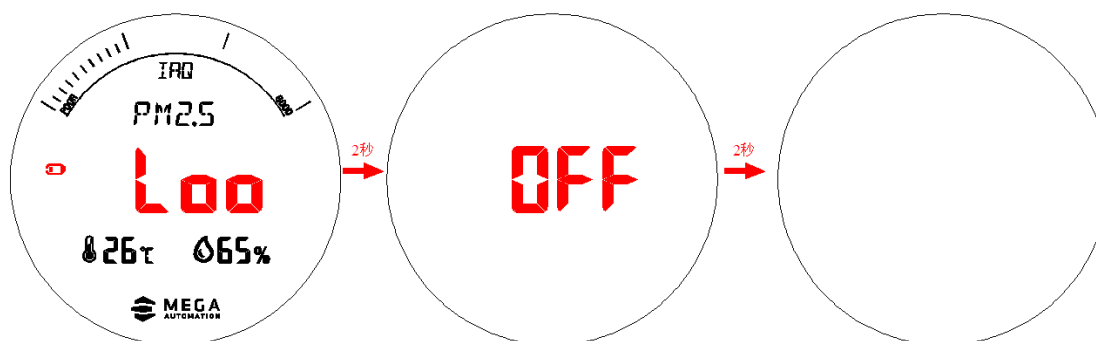
4. The LED lighting backlight conditions:

- ✎ Fire DC power supply, after power-on or RESET, LED highlights;

- ✎ Dry battery power supply, power on or press [TOUCH] alone, the LED will highlight for 30 seconds, and then turn off.

5. Low electric indication

- ✎ Low electric indication; If there is one battery left, turn it off and prompt the user to charge.



E. accuracy.

		section of a normal route	error	section of a normal route	error
PM2.5	ug/m ³	0-100 ug/m ³	±20ug/m ³	101-500ug/m ³	±10-15%
PM10	ug/m ³	0-100 ug/m ³	±25ug/m ³	101-500ug/m ³	±25%
TVOC	ug/m ³	0-200 ug/m ³	±20ug/m ³	200-600 ug/m ³	±25%
HCHO	ug/m ³	0-100 ug/m ³	±20ug/m ³	30-100 ug/m ³	±10%
CO2	ppm	400~5000	±5%+50ppm		

F. working parameter

This product needs to always use the TYP.C data cable to maintain the power supply system, and the backup battery is only used for auxiliary power supply. The battery can only work continuously for about 3 hours.

project	unit	MIN	TYPE	MAX
operating voltage	V	2.4	3.7-5.0	5.5
quiescent current	uA	--	20	50
operational current	mA	--	200	four hundred
Working temperature	°C	-10	--	50

G. FCC Statement:

This equipment has been tested and found to comply with the limits for a Class B digital device, pursuant to part 15 of the FCC Rules. These limits are designed to provide reasonable protection against harmful interference in a residential installation. This equipment generates, uses and can radiate radio frequency energy and, if not installed and

used in accordance with the instructions, may cause harmful interference to radio communications. However, there is no guarantee that interference will not occur in a

particular installation. If this equipment does cause harmful interference to radio or television reception, which can be determined by turning the equipment off and on, the user is encouraged to try to correct the interference by one or more of the following measures:

- Reorient or relocate the receiving antenna.
- Increase the separation between the equipment and receiver.
- Connect the equipment into an outlet on a circuit different from that to which the receiver is connected.
- Consult the dealer or an experienced radio/ TV technician for help.

This device complies with part 15 of the FCC Rules.

Operation is subject to the following two conditions:

- (1) This device may not cause harmful interference, and
- (2) this device must accept any interference received, including interference that may cause undesired operation.

Caution

Any changes or modifications not expressly approved by the party responsible for compliance could void the user's authority to operate the equipment.

FCC Radiation Exposure Statement

This equipment must be installed and operated in accordance with provided instructions and the antenna(s) used for this transmitter must be installed to provide a separation distance of at least 20 cm from all persons and must not be co-located or operating in conjunction with any other antenna or transmitter. End-users and installers must be provided with antenna installation instructions and transmitter operating conditions for satisfying RF exposure com