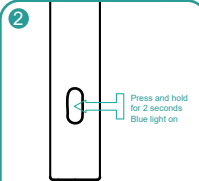


USER MANUAL

Intelligent visual ear pick



Scan the QR code
Download APP



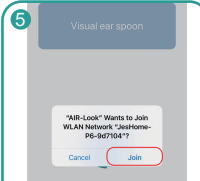
Long press the device
power button to turn it on



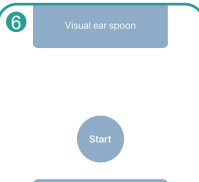
Turn on the cellular
settings WiFi switch



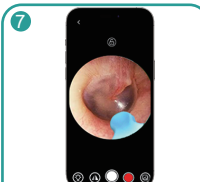
Tap Not connected
Automatically connect
to product WiFi



Pop up product WiFi-
JesHome-P6-XXX-tap Join



Tap Start to use it.



This page The product
can be used

Product parameters

Product Name: Intelligent visual ear pick
Product Model: P6
Ambient Temperature: -10°C~+50°C
Battery Capacity: 130mAh
Charging Time: 40 minutes
Service Time: 40 minutes
Working Voltage: 3.7V~4.2V
Input Voltage: 5V=1A
Output Power: 0.5W
Charging interface: Type-C

Network Standard: IEEE 802.11b/g/n
Operating Frequency: 2.4GHz
Image Sensor: CMOS
Lens Diameter: 3.5mm
Image Transmission Pixel: 8MP
Image Transmission Rate: 30FPS
Gravity Sensor: 3-axis G-Sensor
Product Size: 14mm * H145mm
Product Weight: 14.2g

Product accessories

Main unit × 1
Type-C charging cable × 1
Instructions × 1
Silicone Earpick Sleeve × 5

Mobilephone system support instructions

- 1.For Android phones :support 5.0 and above
- 2.For iPhone :supports 10.0 and above.

Cautions

- 1.It is recommended to carefully clean the lens with cotton swab.
- 2.Please observe the surroundings before use, do not use it in an environment where it may come into contact with moving people or animals, do not use it in a moving vehicle, or in other unstable environments. Please keep your body stable when using it.
- 3.This product is not suitable for children under 3.
- 4.To avoid accidental injury, children are prohibited from using this product alone.
- 5.Do not place the machine in a humid environment for a long time, or immerse the whole machine in liquid.
- 6.The product has built-in polymer battery, which must be charged once a month if not used frequently.
- 7.Please charge the device with 5V charger. It is forbidden to use this device when it is under charging state.
- 8.Avoid exposing the product to direct sunlight.
- 9.Do not place heavy objects on top of the machine.
- 10.During use, the temperature of the product will rise slightly (up to about 35°), which is normal
- 11.Do not put the product in water for cleaning to avoid damage.

Troubleshooting

S/N	Fault	Solution
1	No response after startup	Please charge with the provided charging cable. The charging duration is 40 minutes
2	Camera indicator does not light up	Shut down and restart or reconnect to WiFi
3	APP crashes	Uninstall the existing APP and rescan the QR code to install the latest version of APP
4	Silicone sleeve is loose	Remove the silicone sleeve and slowly re-insert the earpick, or replace the silicone sleeve
5	Blue indicator flashes quickly	Low battery, please charge the product with the provided charging cable
6	Unstable connection, it is easy to disconnect or freeze when using	Restart the earpick and reconnect to the APP
7	After the product is connected to APP, image cannot be displayed normally	Disconnect the phone from the WiFi of the earpick, restart the earpick, and reconnect to WiFi

If the above operation still fails to solve the problem, please contact our customer service staff, we will further provide you with practical solutions on APP-Personal Center-FAQ

Component Name	Restricted substances and its chemical symbols					
	(Pb)	(Hg)	(Cb)	(Cr(VI))	(PBB)	(PBDE)
Circuit board	○	○	○	○	○	○
casing	○	○	○	○	○	○
wires	○	○	○	○	○	○
plastic silicone accessories	○	○	○	○	○	○

Note: "○" means that the percentage content of this hazardous substance does not exceed the standard

FCC COMPLIANCE STATEMENT:

This device complies with part 15 of the FCC Rules.

Operation is subject to the following two conditions:

- (1) This device may not cause harmful interference, and
- (2) this device must accept any interference received, including interference that may cause undesired operation.

Note: This equipment has been tested and found to comply with the limits for a Class

B digital device, pursuant to Part 15 of the FCC Rules. These limits are designed to

provide reasonable protection against harmful interference in a residential installation.

This equipment generates, uses and can radiate radio frequency energy and, if not installed and used in accordance with the instructions, may cause harmful interference to radio communications.

However, there is no guarantee that interference will not occur in a particular

installation. If this equipment does cause harmful interference to radio or television reception, which can be determined by turning the equipment off and on, the user is encouraged to try to correct the interference by one or more of the following measures:

Reorient or relocate the receiving antenna.

Increase the separation between the equipment and receiver.

Connect the equipment into an outlet on a circuit different from that to which the receiver is connected.

Consult the dealer or an experienced radio/TV technician for help.

Warning: Changes or modifications to this unit not expressly approved by the part

responsible for compliance could void the user's authority to operate the equipment.

FCC Radiation Exposure Statement

The device has been evaluated to meet general RF exposure requirement.

The device can be used in portable exposure condition without restriction.