

PETJC

Shen zhen shi ju chong shi ye you xian gong si

Address: shen zhen shi long hua qu guan lan jie dao da fu she qu da fu gong ye qu
22 hao A1 dong 301 gui gu dong li shu ma yuan A1 dong 3 lou

Product Name: Self-Cleaning Cat Litter Box
Executive Standard: GB4706.1-2005
Product Model: AU01-III
Dimensions: 616*570*690mm
Net Weight: 12.3kg
Gross Weight: 15.3kg
Rated Voltage: 12V
Maximum Output: 12W
Input Voltage: 100-240V
FCC-ID: 2A60D-AU01-III

FCC Warning

This device complies with part 15 of the FCC rules. Operation is subject to the following two conditions: (1) this device may not cause harmful interference, and (2) this device must accept any interference received, including interference that may cause undesired operation.

Changes or modifications not expressly approved by the party responsible for compliance could void the user's authority to operate the equipment.

NOTE: This equipment has been tested and found to comply with the limits for a Class B digital device, pursuant to part 15 of the FCC Rules. These limits are designed to provide reasonable protection against harmful interference in a residential installation. This equipment generates uses and can radiate radio frequency energy and, if not installed and used in accordance with the instructions, may cause harmful interference to radio communications. However, there is no guarantee that interference will not occur in a particular installation. If this equipment does cause harmful interference to radio or television reception, which can be determined by turning the equipment off and on, the user is encouraged to try to correct the interference by one or more of the following measures:

- Reorient or relocate the receiving antenna.
- Increase the separation between the equipment and receiver.
- Connect the equipment into an outlet on a circuit different from that to which the receiver is connected.
- Consult the dealer or an experienced radio/TV technician for help.

Radiation Exposure Statement

This equipment complies with FCC radiation exposure limits set forth for an uncontrolled environment. This equipment should be installed and operated with minimum distance 20cm between the radiator and your body.



APP scan the QR code
to download the APP

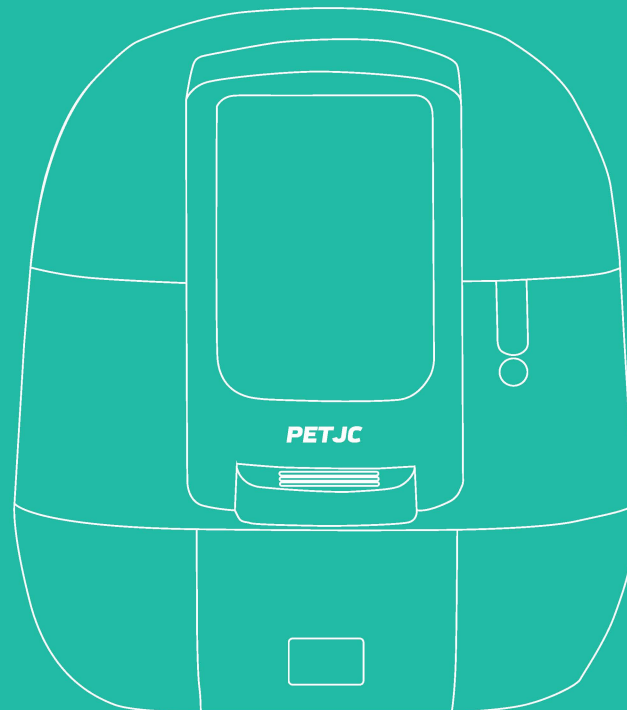


video teaching



PETJC

SELF-CLEANING CAT LITTER BOX PRO



Shen zhen shi ju chong shi ye you xian gong si

Thank you for choosing PETJC Self-Cleaning Cat Litter Box

© Before using this product, please read through all instructions and warning tips on the manual and product, and observe the basic precautions while using. It means that all safety instructions have been read once the product is used.

Notice:

The following instructions are suited for the product, tools, accessories, and any power supply that are needed to be used.

1. Please follow the manual strictly to install and use the product
2. Cats under 3 months old or under 1KG are not allowed to use this device or please use the device without power.
3. The ground at the bottom of the machine must be kept clean and flat. The machine must not be against the wall and nothing should be placed at the top.
4. There is a weight sensor at the bottom of the product, please be careful when handling the product and do not drag the product.
5. The device runs in low voltage, but pets tearing the wires may still cause leakage
6. Please use the original adapter, otherwise it may damage the device or cause safety hazards
7. The bottom of the mainframe of this device is not allowed to be immersed or rinsed directly
8. If there are children using the device, please make sure to use it under the guidance of an adult
9. When traveling, Make sure there is enough litter in the litter box and enough space in the Rubbish box
10. Do not place the device in a hot, humid environment
11. The product is sorted as large items, in order to better enjoy the after-sales service, we recommend that you keep the outer packaging for more than 7 days, and then discard them after you are satisfied with the trial.
12. Please observe the basic common sense of electric using when using the device
13. If you have any questions during the use, please contact the after-sales service in time

suggestions of use:

1. The machine is suitable for small granular cat litter, in order to ensure a better experience of using the automatic cat litter box, it is recommended to choose bentonite cat litter, crushed tofu cat litter. Normal tofu cat litter is recommended to choose specifications below 1.5mm in diameter
2. The amount of crushed tofu cat litter is about 2.7-3.5kg, and the amount of bentonite cat litter is about 5-5.5kg. It is best to lay it flat to just cover the edge of the anti-adhesive soft rubber bottom.
3. Intelligent litter adding mode can be used to add cat litter, or can be added manually. Add in appropriate amount of cat litter from above the machine until a beeping tone sound.
4. PRO version can last up to 15 days without cleaning, normal use is recommended to clean once every 2-3 days
5. Please adjust your WIFI signal to 2.4G frequency when connecting the APP, otherwise it may lead to connection failure.
6. When the machine happens to have a program error, please unplug the power for 7 seconds and then reconnect to reboot the machine.

Warranty regulations:

This product after-sales service is strictly in accordance with the "Protection of Consumer Rights and Interests Law of the People's Republic of China", "Product Quality Law of the People's Republic of China" to implement after-sales service, service content is as follows:

1. Within 7 days from the date of purchase, If the quality problem of the product is identified by the company, consumers can enjoy return or exchange services.
2. Within 15 days from the date of purchase, If the quality problem of the product is identified by the company, consumers can enjoy exchange or repair services.
3. Within 12 months from the date of purchase, If the quality problem of the product is identified by the company, consumers can enjoy free repair services
4. Within 7-15 days from the date of purchase, When returning, the product and accessories should be kept intact and no cosmetic damage, and keep the packaging intact.

Non-warranty regulations

The following cases (but not limited to the following) are not included in the warranty services.

- 1, Has exceeded the validity of the warranty services;
- 2, Damage caused by unauthorized disassembly or repair.
- 3, Damage caused by not using or maintaining in accordance with the requirements of this manual
- 4, Damage caused by force majeure such as fire, lightning, floods, pet bites, etc..
- 5, The normal fading and aging of the product during use.
- 6, Random gifts.

Common problems and solutions

If you meet the problem does not appear here, please promptly contact the after-sales solution.

1. Device cannot be turned on
Re-plug the power cable, press and hold the power button for 2 seconds to turn on the machine, if it still cannot be booted, please contact customer service.
2. The power is normal, but the machine does not clean up
First look at the weight displayed on screen
① If the weight is 0KG and do not clean up: during the cleaning process, the cat go into (orlying on the threshold) will start the anti-clamp function and reset, until the next use to clean up completely.
② When the screen shows that the weight is greater than 0.3 kg, but not cleaning: trigger the cat anti-clamp protection program, the machine may be against the wall, or pressing the cat litter mat, so there will be an inflated weight. After eliminating the above problems, switch to 'reset' mode, and it can be used normally after the reset is completed.
3. When the display indicates that "foreign objects have entered the drawer", check whether the garbage bag is installed in the correct way, press down the small flap to avoid triggering the infrared protection program, open the door frame and the top cover, take out the inner barrel and remove the foreign objects in the flap above the collection box.
4. After each part is installed, but the device still beeping: make sure that the door frame and the top cover are installed in place. Note that the bottom edge of the door frame is aligned, and the top cover is installed with the edges aligned, if there is still a beeping sound after alignment, please check whether the magnet of the door frame has fallen off.

5. Open the APP, add the device, check the box "The screen is displayed as WIFI setting mode" and click next.



6. Enter the correct home WIFI password on the APP and click Next.

7. If you are using IOS, this process will appear "whether to allow to join the network" and "PETJC" wants to find and connect to the local network on the device", click "Join" and "Yes"



8. The APP will start pairing with the litter box, it is normal that the phone cannot connect to the network during the pairing process, no need to deal with it, the network will be restored after successful pairing.

9. Please try to put the phone as close as possible to the device when APP is pairing.

10. The APP and the litter box are correctly paired and connect successfully

APP can't be connected/problem solving

Check if your home router is on 2.4G frequency, if there are 2 WIFIs at home, one with _5G suffix and one without, please link the WIFI signal without _5G suffix. When connecting APP, if the signal of "GRANWIN_AP" is not found, you need to press and hold the power button until it is turned off, then press and hold the function switch button to switch to "WIFI setting" and re-operate the connection steps. If you cannot connect to the "Granwin_AP" signal, please try to restart the device or restore the factory settings and try to reconnect.

How to turn on the "Location service permission" of APP

Android: Open Settings → Applications and Services → Permissions management → Location information → Find the app "PETJC" → Location permission set to "always allow"

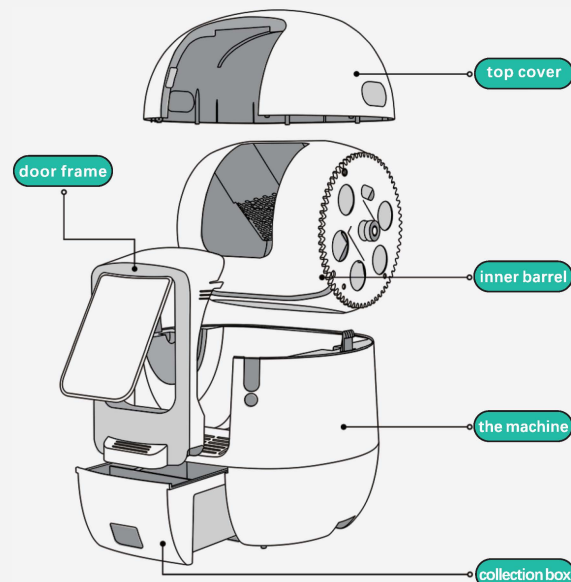
IOS (Apple): Open Settings → Find APP "PETJC" → Location → Click "Allow".

Generic method: Uninstall the APP and reinstall it. When the APP is installed or opened after the installation is completed, a pop-up will appear "whether to give the APP permission to use location services". Click Allow

The "GRANWIN_AP" signal is a virtual WIFI signal issued by the device, the APP pairs with the device by connecting the virtual WIFI signal, if the signal cannot be searched when connecting, please try to solve the problem by the fourth step.

Check the accessories and premiums

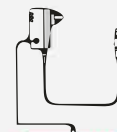
(some of the accessories are placed in the inner barrel or in the collection box)
The first time after opening the box to count the accessories and premiums are neat and intact



anti-bite rubber strip



litter bag

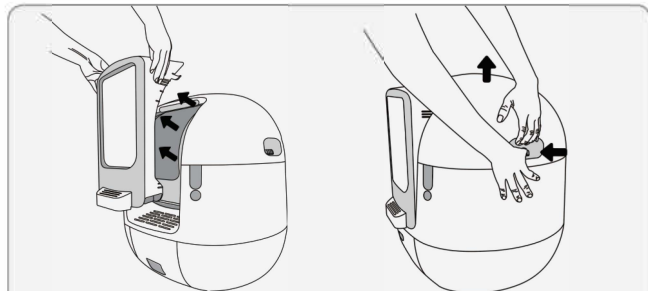


power cable

The illustration is a generic version. The model shown is the Pro version

Disassemble the machine

Remove the external protective film of the machine, the door frame, and the top cover

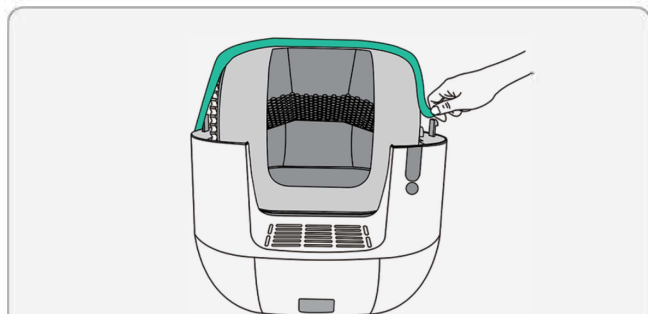


Remove the door frame

Remove the door frame by holding down the clips inward on both sides of the top of the door frame at the same time, and install the same way

Remove the top cover

Press the side clasps of the top cover until they are loosened, lift the top cover upward to complete disassembly



Remove the external protective film

Remove the film under the top cover

APP Network Matching

Please strictly follow the instructions

APP Download

Android: You can download the latest version from the official website or reply "APP" to the official WeChat public number to get it.

IOS: You can download it directly from APP Store by searching for "PETJC".

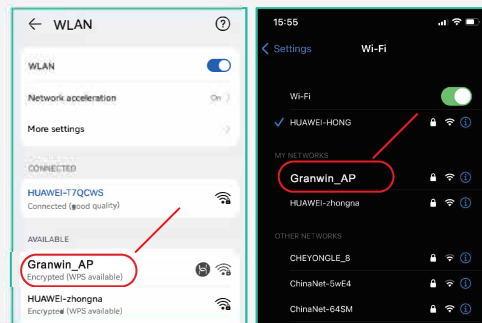
Installation instructions

Android: Please agree to the permissions requested by the APP when installing the APP, the APP only provides connection and litter box related functions.

IOS: After installation, when you open the network mode for the first time, APP will apply for "Location Service Permission" for the "WIFI setting" of the litter box, please agree with APP to obtain this permission, otherwise it may cause the APP cannot connect to the litter box normally (need to open the precise positioning).

Steps of WIFI setting:

1. turn on both WIFI and Bluetooth of the phone.
2. touch the function switch button to switch the menu to "WIFI setting" and press the confirm button
3. Find the WIFI "GRANWIN_AP".
4. Directly connect to the signal "GRANWIN_AP", the password is 12345678.



If the router is a dual-mode band, please select the signal band without the "_5G" suffix.

Select litter type by using the APP

Follow the steps to select current used litter


1

Auto Cat Toilet

Insufficient cat litter, please add cat litter

0.0kg

Cat litter margin



Power on

Power off

Manual clean

One-click sand clean

Sanding mode

milk

Weight 15.00kg

Average duration 0s

Times 0

Usage record

2

Setting

Auto Cat Toilet ☒

Device ID: A8032A9255A8

Online

Do Not Disturb mode ☐

Litter Type Custom

Sand weight (g) 5000

Lack of sand weight (g) 4000

3

PETJC tofu litter

PETJC bentonite litter

Custom

Cancel

The cat has completed the operation

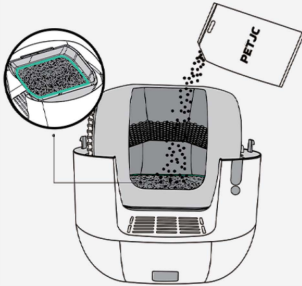
Set the type of cat litter through the APP.

Open the APP and click on the current device, enter the device and click on "..." in the upper right corner to enter the device setting page, click on the type of litter to set the current type of litter used

Note: Different types of litter have different suggested weights, so choose accurately according to the actual litter used.

Addition of cat litter

It is recommended to use bentonite clay litter or crushed tofu litter.

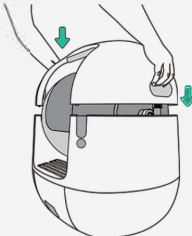
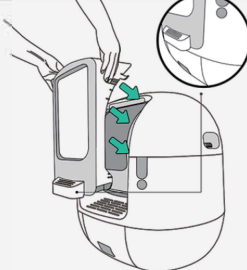


Pour in the cat litter

Be careful not to exceed the edge of the soft rubber pad of the inner barrel after the litter is leveled

Small granular tofu cat litter 2.7-3.5kg

Bentonite cat litter 5-5.5kg

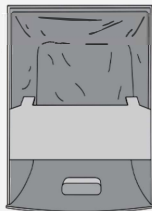
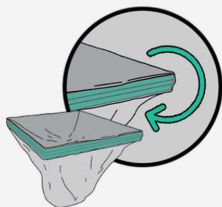
Install the top cover

Align the connection column above the screen and the fixed snap position on both sides, and press firmly after alignment

When installing the door frame, align the lower side of the door frame with the body, and press both sides of the snap to install in place. If the door frame is not installed correctly, the machine will keep beeping

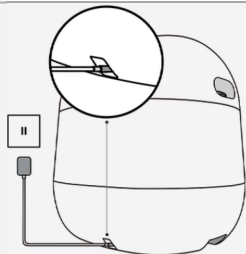
Installment of the litter bag/Boot the machine

No other objects should be against or on the top of the machine



Install the litter bag

Put the litter bag into the fixed bracket and wrap the edge around the fixed bracket. Put the litter bag into the box, press the bottom to discharge excess air to keep the surrounding flat.



Turn on the power

Insert the power adapter into the power connector at the back of the machine and the power socket



Boot the machine

The machine will automatically turn on after the power is connected, touch the center console to switch functions, press the confirmation button to execute the operation

Function introduction of APP page

Function annotation of cat litter basin setting page



Setting

Name



Auto Cat Toilet



rename the device

Device ID: A8032A9255A8

Online

Current device status

Do Not Disturb mode



Set the specified time to avoid cleaning, after the set time to resume normal cleaning

Litter Type

Custom



Customize the weight of full litter
Customize the weight of lacking litter

Sand weight (g)

5000

Lack of sand weight (g)

4000

Different cat litter is full and short of sand reminder weight will be different, please choose a reasonable or through the custom manual setting

Automatic cleanup delay settings

1min

Clean-up delay setting

Reminder to clear the stool drawer



Usage record push switch

Lack of sand reminder



Litter shortage information push switch

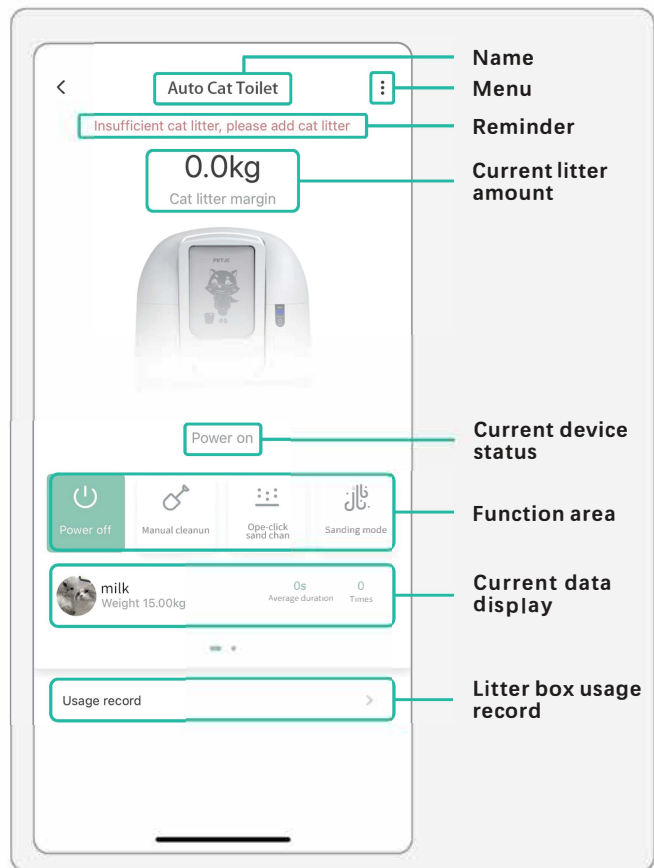
The cat has come to rest



Usage reminder push switch

Function introduction of APP page

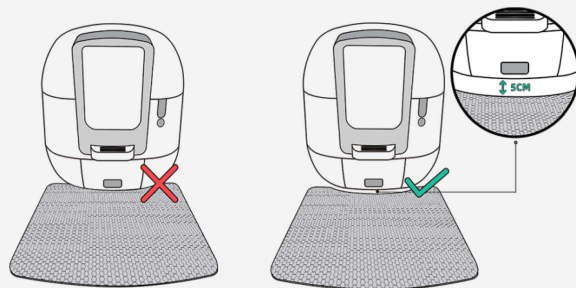
Function annotation of cat litter basin setting page



Placement of the litter mat

The litter mat is not standard, but free for some versions

Place the hidden litter mat directly in front of the litter box, and keep a distance of more than 5cm from the machine. The litter mat touching the machine or at the bottom of the machine may affect the accuracy of the weight sensor detection and trigger the cat protection mode.

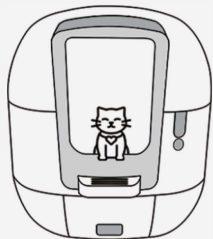


After setting the machine, place the litter mat on the ground directly in front of the entrance of the machine. Keep the litter mat at a distance of about 5cm from the machine.

Please install the litter bag and litter mat correctly and keep the litter bag flat, otherwise it may affect the weight sensing and infrared sensing of the litter box and trigger the bottom foreign object error alert.

Safety Protection

This patented intelligent safety system ensures the safety of cats children/users

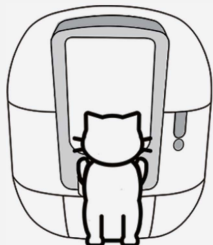


Kitten protection

active kitten protection program. The minimum value set by the machine to start cleaning is 1000 grams, and kittens below 1000 grams will not be able to trigger the machine to start the cleaning process when they enter the machine.

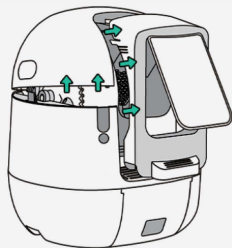
Weight protection

With eight weight sensors, in the process of cleaning, cats touch or enter the machine, weight sensors sense the weight change. When the weight change reaches 300 grams, the machine instantly suspend cleaning until the cat leaves the device will continue to work



Infrared protection

The infrared sensor at the bottom of the machine is always monitoring the entry of cats, when the entry of cats is monitored, immediately stop cleaning, machine reset, to prevent cats from being trapped



Magnetic suction anti-pinch

When cat is clamped, the device and the top cover connection magnetic suction switch will be separated by force, the machine immediately reset to prevent cats from being clamped

Structural separation

Structural separation is the last physical line of defense of the machine, in the case of any protection sensors are out of order, the top cover automatically separates the body when the cat is caught, ensuring that the cat can escape freely

Cleaning Instructions

Please follow the instructions below

1. unplug the power cable to ensure that the litter box is powered off, remove the door frame, top cover, and pull out the collection box.

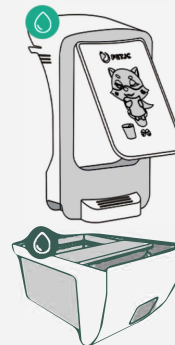
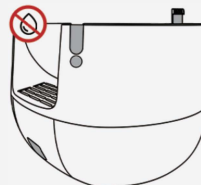
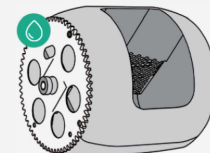
The door frame can be washed all over

The top cover can be washed all over

Inner barrel can be washed all over

The collection box can be washed all over

There are circuits in the base which are not allowed direct washing. The base can be wiped with a wet cloth, or with a neutral cleaning solution (no alcohol / no chemical reagents)



Attention

Machine electronic parts are in the body, please do not wash! Machine damage caused by water washing is not included in the warranty service! Please follow the above instructions to clean the machine!

2. After cleaning, dry the parts, install the collection box, inner barrel, top cover, door frame in turn and turn on the power to boot the machine

3. After all parts are installed, if there is a beeping sound, please check again if the parts are installed.

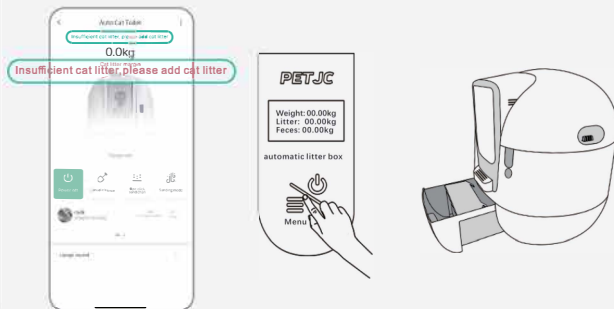
*It is recommended to clean once a month to give cats a healthier toilet environment.

Cleaning/pairing

Please follow the steps to connect the APP

Cleaning tips

When the collection box is full and needs to be cleaned up, there will be cleaning reminder on the screen and APP. Please don't clean up the box during the cleaning process. When reloading the garbage bag after cleaning, pay attention to keep the garbage bag entrance flat, otherwise it may affect the work of the infrared sensor, the machine will automatically boot itself after the collection box is installed.



Phone pairing

Scan the code to download and install the "PETJC", turn on the Bluetooth and positioning function on the phone, switch the menu to "WIFI connecting" mode, follow the Page 16, the detailed procedures, to complete the pairing, and you can remotely view and control the device on phone

This product can be used by multiple phones connected to the network at the same time, refer to the detailed network steps for specific operation

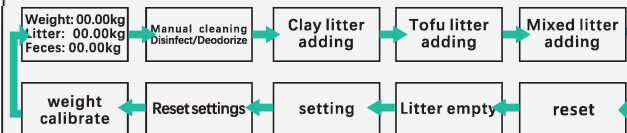


Center Console Operation Instructions

Details of functions

menu

List of the menu from left to right:



Weight/Litter/Feces

Weight: weight of the cat

Litter: weight of litter

Feces: weight of feces in collection box

Manual cleaning, Disinfect/Deodorize

Whole cleaning process (cleaning-disinfect-deodorize) will process when function selected in normal condition,

Clay litter adding

1. Clay litter adding mode, the barrel inlet rotates to the highest position, remove the door frame and top cover to add litter
2. Clay litter should be about 5-5.5kg, the device will sound a beep sound continuously when appropriate amount of litter is added
3. After litter is added, install the top cover and door frame, switch to the "reset/cleaning" function, and return to normal condition after cleaning

Tofu litter adding

1. Tofu litter adding mode, the barrel inlet rotates to the highest position, remove the door frame and top cover to add litter
2. Tofu litter should be about 5-5.5kg, the device will sound a beep sound continuously when appropriate amount of litter is added
3. After litter is added, install the top cover and door frame, switch to the "reset/cleaning" function, and return to normal condition after cleaning

Mixed litter adding

1. Mixed litter adding mode, the barrel inlet rotates to the highest position, remove the door frame and top cover to add litter
2. Mixed litter should be about 5-5.5kg, the device will sound a beep sound continuously when appropriate amount of litter is added
3. After litter is added, install the top cover and door frame, switch to the "reset/cleaning" function, and return to normal condition after cleaning

Reset:

Select this function during any action of the machine, it will perform reset operation. After resetting, weight data will be reset and cat litter will be leveled. Do not leave the machine when the "reset" is executed to beware of cats entering

Litter empty

1. The inner barrel inlet rotates to the lowest level and empty the litter into the collection box.
2. Before selecting the "litter empty" function, make sure the collection box has enough capacity to hold the litter in the inner barrel.
3. After emptying the litter, you can switch to the "litter adding" function and reset after adding litter.

WiFi setting

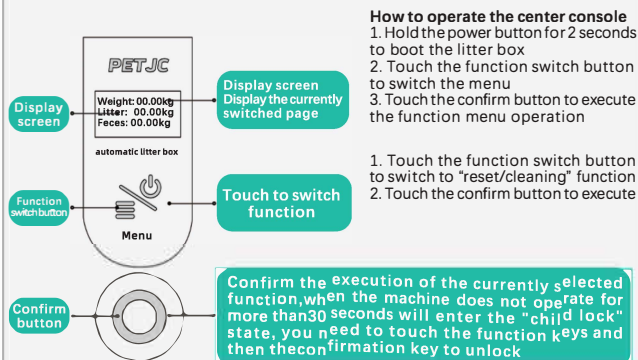
1. Download and install "PETJC" APP
2. Select "WiFi setting", the device will open the communication module and connect the phone for remote control
3. This requires normal communication network at home, WIFI signal format of 2.4G band

Reset settings

Restore all data to factory setting

Weight calibrate

1. Data of Weight / Litter / feces are cleared to zero
2. Weight calibration function needs to ensure that the inner barrel, top cover, curtain, and collection box are all installed
3. Keep the floor clean/level and the device is not against anything all around



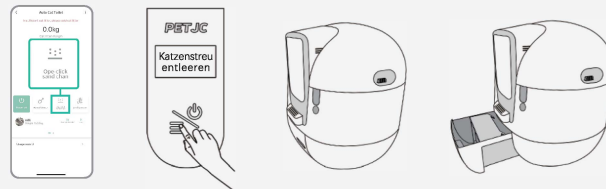
Operation instructions

"Intelligent litter addition" and "Litter adding"

Empty the litter

After the litter is used for a period and needed to be renewed, switch to "litter empty" mode or choose "Intelligent litter addition" mode in the APP, the inner barrel inlet rotates to the lowest level and empty the litter into the collection box.

Before selecting the "litter empty" function, make sure the collection box has enough capacity to hold the litter in the inner barrel



Litter adding

When the remaining amount of litter is less than the setting value, there will be a reminder on both the display and the APP. To add the litter, switch to "Litter adding" mode or choose in the APP. The barrel inlet will rotate to the highest position, remove the door frame and top cover to add litter. After litter is added, install the top cover and door frame, switch to the "reset/cleaning" function, and return to normal condition after cleaning

