

## Technical Specification

**Manufactured:** Shenzhen Qianmu Communication Technology Co.,Ltd.

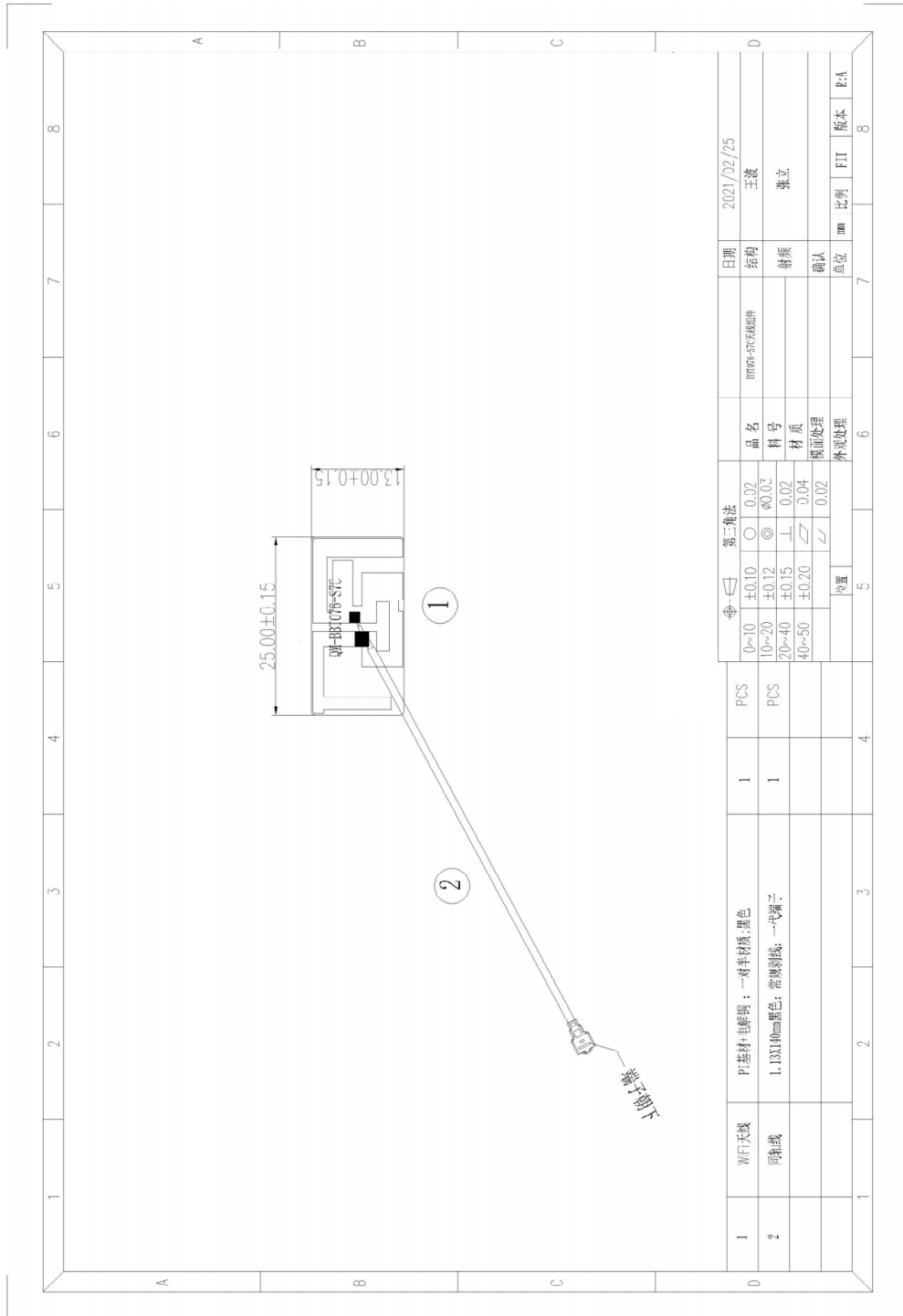
**Address:** No. 425, 443, 4th Floor, Building A, Huafeng Zhigu - Hangcheng High tech Industrial Park, Hangcheng Street, Sanwei Community, Bao'an District, Shenzhen, China

<b>Antenna Model</b>	BBT076-S7C-I
<b>Type</b>	FPC

## Technical Specification

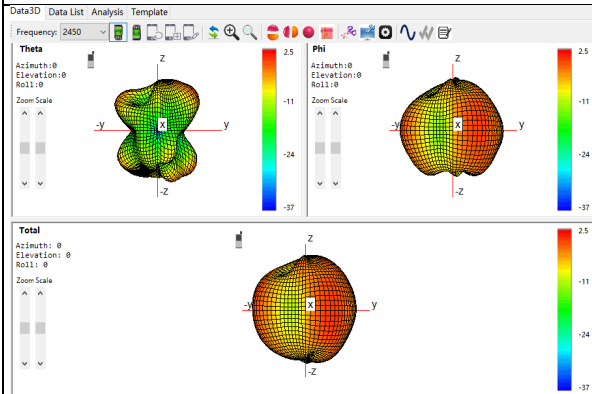
	Band	Mode	Name	Frequency	Antenna Type	Antenna Max Gain	
<b>WiFi</b>	<input checked="" type="checkbox"/> 802.11b/g/n	2.4GHz	Wi-Fi 4	2401-2495	PIFA	1.75	dBi
	<input checked="" type="checkbox"/> 802.11a/n/ac/ax	5GHz	Wi-Fi 5/6	4910-5895		2.09	
<b>BT</b>	<input checked="" type="checkbox"/> Bluetooth			2400-2500	PIFA	1.75	dBi

Size: 1.13\*140mm

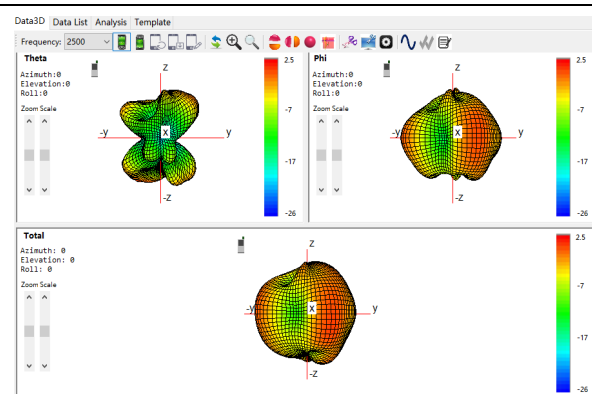


# Technical Specification

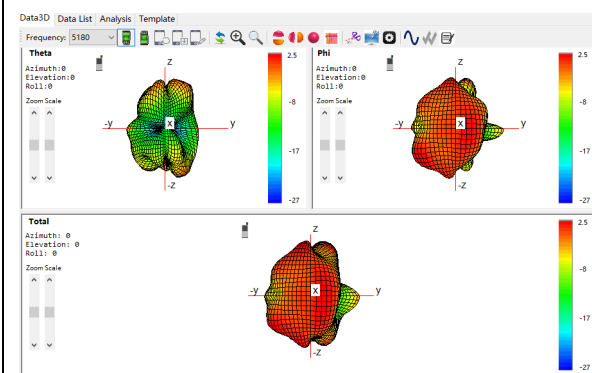
## G/W/B 3-D Patten Plots



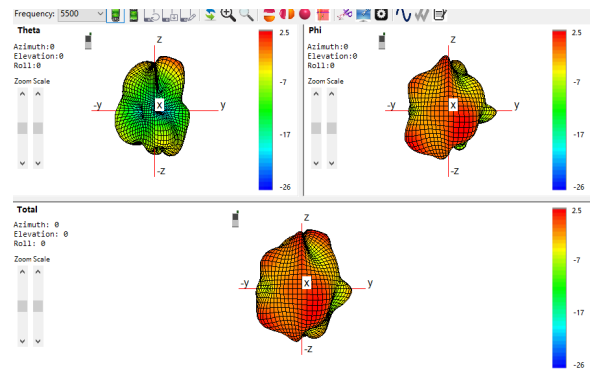
W/B: 2450Mhz



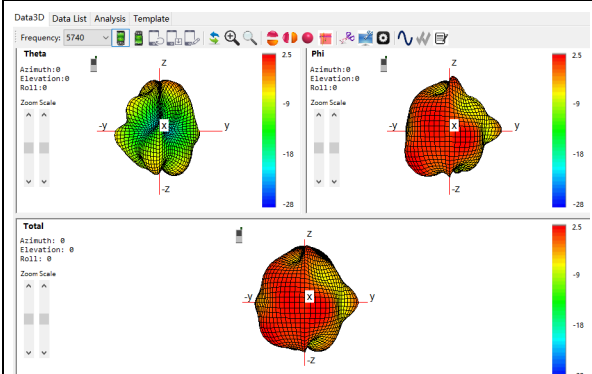
W/B: 2500Mhz



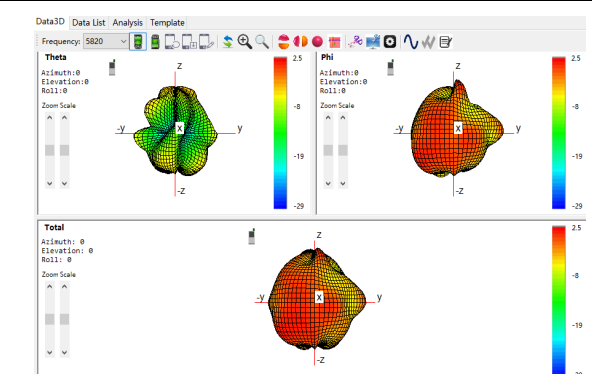
W/B: 5180Mhz



W/B: 5500Mhz



W/B: 5740Mhz



W/B: 5820Mhz