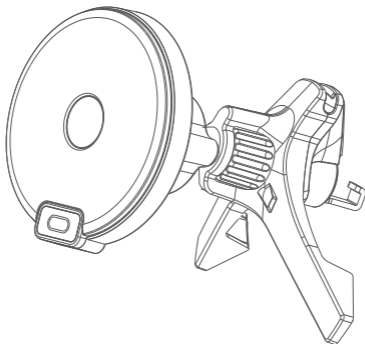
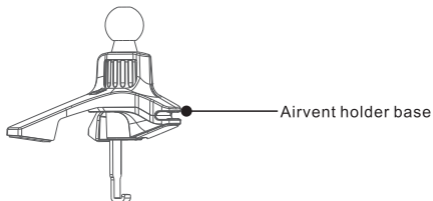
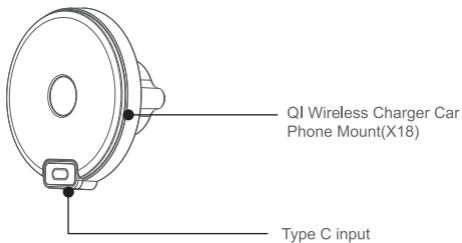


MAGNETIC CAR CHARGING MOUNT

User Manual





Specifications

- Input: DC 5V2A, 9V2.22A
- Output: DC 5V/1A, 7.5V/1A, 9V/1.12A, 9V/1.66A (5W, 7.5W, 10W, 15W)
- Transmission distance: ≤5mm
- Charging efficiency: 75% Max

Note

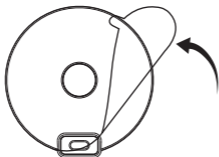
- Only for iPhone 13/12 Series (MagSafe Case Friendly):
iPhone 13 / iPhone 12, iPhone 13 Pro /iPhone 12 Pro /
iPhone 13 Pro Max / iPhone 12 Pro Max / iPhone 13 Mini /
iPhone 12 Mini

Note: Please use case with official MagSafe case Magnetic case.
Not applicable to other phone cases!

How to use and wireless charging

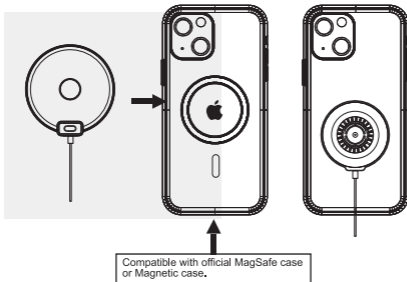
Unscrew the mounting ring, insert the ball through the mounting ring, then position your preferred angle and tighten the ring to secure the mount.

Please tear off the protective film before using.



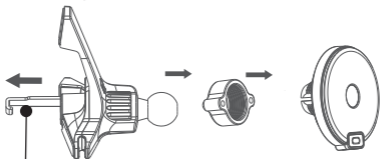
Work MagSafe® Compatible Devices

*Up to 7.5W wireless charging for iOS devices.

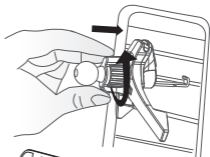
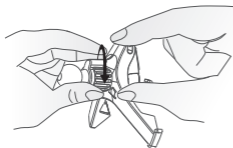


How to use and wireless charging

Unscrew the mounting ring, insert the ball through the mounting ring, then position your preferred angle and tighten the ring to secure the mount.



Applicable blade
width: ≤ 30mm



USB-A

*QC3.0 Car Charger not included.

Notes

1. Do not squeeze or collisions.
2. Do not disassemble or throw into fire or water, to avoid causing a short circuit leakage.
3. Do not use wireless charger in severely hot, humid or corrosive environments, to avoid circuit damage and occurs leakage phenomenon.
4. Do not place too close with magnetic stripe or chip card (ID card, bank cards, etc.) to avoid magnetic failure.
5. Please keep the distance at least 20cm between implantable medical devices (pacemakers, implantable cochlear, etc.) and the wireless charger, to avoid potential interference with the medical device.
6. To take care of the children, to ensure that they won't play the wireless charger as a toy, to avoid unnecessary accidents.

The involved images are sketch maps, the final product as per the material subjects.



RoHS
compliant



Made in china

This device complies with part 15 of the FCC Rules. Operation is subject to the following two conditions: (1) This device may not cause harmful interference, and (2) this device must accept any interference received, including interference that may cause undesired operation.

Any changes or modifications not expressly approved by the party responsible for compliance could void the user's authority to operate the equipment.

NOTE: This equipment has been tested and found to comply with the limits for a Class B digital device, pursuant to Part 15 of the FCC Rules. These limits are designed to provide reasonable protection against harmful interference in a residential installation. This equipment generates, uses and can radiate radio frequency energy and, if not installed and used in accordance with the instructions, may cause harmful interference to radio communications. However, there is no guarantee that interference will not occur in a particular installation.

If this equipment does cause harmful interference to radio or television reception, which can be determined by turning the equipment off and on, the user is encouraged to try to correct the interference by one or more of the following measures:

- Reorient or relocate the receiving antenna.
- Increase the separation between the equipment and receiver.
- Connect the equipment into an outlet on a circuit different from that to which the receiver is connected.
- Consult the dealer or an experienced radio/TV technician for help.

FCC Radiation Exposure Statement

This equipment complies with FCC radiation exposure limits set forth for an uncontrolled environment. This equipment should be installed and operated with a minimum distance of 20 cm between the radiator and your body.

FCC ID: 2A6IU-X18