

EuroFone®

S6-1200m



Multi-intercom helmet Bluetooth headset

S6 1200m.

User Manual

Thank you for choosing our EUROPHONE S6 motorcycle helmet Bluetooth intercom headset. Please carefully read this manual. S6 is a perfect Bluetooth intercom, with a more stylish design and big buttons to operate. After the six Bluetooth headphones are paired separately, they support speaking with the other 5 people respectively, during the cycling process, it provides you with a complete communication system to meet all your communication needs. High-tone quality 40MM speaker and noise reduction mic that will allow you to listen to cell phone MP3 music, GPS voice navigation, and answer cell phone calls. More importantly, it can be compatible with other brands of helmet Bluetooth headset connectivity or normal Bluetooth headset, allowing you to keep in touch with your friends during the ride.

For People:

Helmet of Motorcycle, bicycle, skiing, electric motorcycle, construction, mining workers, fire fighting, traffic police and so on.

Main performance and specifications:

The maximum call distance between the two riders, up to 1200 meters, supports pairing with 5 Bluetooth headphones with full dual wireless communication between any two riders

Maximum noise reduction speed: 120km/ h

Automatically answer mobile phone calls and ride safely

Bluetooth CSR BC8 CVC8.0 automatic noise reduction scheme

Advanced A2DP & EDR Bluetooth features

Strong shaking stereo music / audio features (phone / MP3/GPS using A2DP)

DSP noise elimination function

Built-in polymer lithium battery is 800mAh

Standby time: 400 hours

Continuous calls or intercom for more than 22 hours

Listen to the music for over 72 hours continuously

Charging time is 2.5 hours

National Grade 6 waterproof standard

1. Buttons Function Introduction



(Fig. 1.)

1. Power On/Off Button
2. Multi-Function Button /Play Button
3. Volume Up +
4. Volume Down -
5. Charging Jack/ headphone Jack (Micro interface)
6. The A, B, C, D, E intercom Buttons
7. Hard microphone, Soft microphone (replaceable)
8. Stereo Ear Speaker

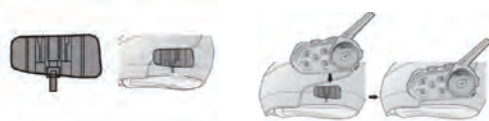
2. How to Install It

2.1. Screwdriver Installation: Loosen the clip screw clockwise with the provided screwdriver along the arrow, open the lining of the helmet, install the clip on the left, tighten the screw (screw will damage the clip), and slide the Bluetooth host into the slot on the clip holder to ensure that it is firmly locked. for example (Figure 1).



(Figure 1.)

2.2. Installation of the Magic stick clip: Wipe the helmet, then tear off the white paper on the clip, stick the host to the right left side of the helmet, and then point the Bluetooth headset at the card slot of the clip, and push it in place. (Recommended to stick 3M Sticker to the helmet for 24 hours) , such as (Figure 2)



(Figure 2.)

2.3. Headphone Installation: open the helmet lining, find the helmet closest to the ear, clean the magic patch surface, paste the speaker corresponding to the magic cap patch and arrange the helmet lining, insert the headset plug into the corresponding Bluetooth host headset socket, insert can be installed, such as (Figure 3).



(Figure 3)

3. Function and Operation Methods

3.1.1 Power on: under the shut down state, press the power button for 2 seconds, you can listen "power on". After the device starts and hears the power broadcast, it will automatically switch to Bluetooth pairing mode.

3.1.2 Power off: in start up state, press the power button for 5 seconds, hear "power off", and the equipment turns off

3.1.3 Answer the Call: Press Play briefly to answer the call; automatically after 10 seconds after any operation.

3.1.4 Rejects a Call: Press Play for 2 seconds.

3.1.5 Audio Assistant: When the headset connects to the phone on standby, press the Play key for 2 seconds (this function requires the phone to support voice dialing)

3.1.6 Termination: Press Play briefly during the call.

3.1.7 End Redial: In connected, double-click Play.

3.1.8 Music Play/Pause: Mobile phone music, short press Play, music pause, repeated operation, music play.

3.1.9 Up / Next: Volume-, last song, Volume +, next song.

3.1.10 Increase/Decrease Volume: in music, press the volume +, make the volume up. Press the volume -, the volume decreases. The volume moves to maximum or maximum and a "tick" is heard.

3.1.11. Initiate and End Intercom Mode: in pairing state, briefly press A, B, C, D, E to initiate intercom; in intercom mode, briefly press Play key to end the intercom.

3.1.12 Phone, Intercom, Music switch: when listening to music or Bluetooth intercom, call will automatically switch to the phone state, when the call, automatically restore the phone state; want to talk to A, press A button, want to speak to B, press B button.. (must paired with A\B\C\D\E first), will enter the intercom state, and then press Play button, intercom end, press more Play button, music automatically resume playback; Note: It takes about 5 seconds to switch between each state.

3.1.13. Chinese and English Language Switch: in pairing mode, double-click the volume Up + and volume Down-
(Customize other languages, the customer provide the language voice List).

3.1.14. Restore factory settings: In pairing mode, press volume + and Play for 5 seconds.

4. Pairing with Mobile Phone and Headsets

4.1. Pairing with Mobile phone

4.1.1 The needs a paired Bluetooth headset within 1 meter away from the phone with Bluetooth.

4.1.2 In shutdown state, press power button for 5 seconds, and the red and

blue lights flash

4.1.3 Turns on the phone with Bluetooth, and the phone automatically searches for Bluetooth headset devices.

4.1.4. Selects "S6" Bluetooth device and matches, and will hear the voice of "Bluetooth is connected". The Bluetooth headset is successfully paired with the mobile phone, which can transmit and answer the mobile phone through the Bluetooth headset.

4.2. Two Bluetooth Intercom Pairing

4.2.1 Two Bluetooth headphones to be paired are placed within a visual range of 1 meter apart.

4.2.2 Press Power On button 2 seconds, blue light, namely, automatically play after power, into the red and blue light flash, and press the A button of any Bluetooth headset, the Bluetooth headset flash for about 3 seconds, enter the intercom pairing mode, Power on another Bluetooth headset and pairing mode, no operation, to be searched, the red and blue light flashing and hear the intercom connected prompt, that is into the intercom mode (intercom pairing for 120 seconds, intercom pairing will automatically exit the intercom pairing mode and prompt connection timeout).



2 Bluetooth Headset Pairing

4.2.3 In intercom mode, the ear opportunity has the intercom prompt voice: "the intercom is connected", which means that Bluetooth pairs to connect the headset successfully, so you can make the intercom. Press Play short to close the intercom.

4.2.4. intercom: after the intercom or two paired Bluetooth headset restart, want to speak again, just press the A button once (must remember which button paired, press which button), the main opportunity to prompt voice: "start intercom", two Bluetooth can hear "intercom already connected", then can speak.

4.3. 6 Bluetooth Headsets Pairing

The S6 supports 6 Bluetooth headphones to be paired each other and realize the switch pair between each two knights. The matching method is to take a Bluetooth headset as the host. The host must be paired with the other five Bluetooth headphones respectively. The steps are as follows:



(6 Bluetooth Headsets Pairing)

4.3.1. Paired with A, two Headsets power on to pairing state, press A button of A machine and PLAY key, enter intercom mode for 3 seconds. Short press PLAY button, finish the intercom and turn off the A.

4.3.2. Paired with B, two Headsets power on to pairing state, press B button of B machine and PLAY key, enter intercom mode for 3 seconds. Short press PLAY button, finish the intercom and turn off the B.

4.3.3. Paired with C, two Headsets Power on to pairing state, press C Button of C and enter intercom mode for 3 seconds. Short press PLAY button to finish the intercom and shut off C.

4.3.4. Paired with D, two Bluetooth power on to pairing state, press D key of D machine and PLAY key, and enter intercom mode for 3 seconds. Short press PLAY button to finish the intercom and turn off the D.

4.3.5. Paired with E, two Bluetooth power on to the pairing state, and press the E key and PLAY button of the E machine, and enter the intercom mode for 3 seconds, you can speak.

4.3.6. After the host is paired with A, B, C, D, E 5 Bluetooth headsets, press A, B, C, D, for 3 seconds. Power on all of them, When the host wants to talk to A, only press A; want to speak to B, only press B, and so on.

4.3.7. If A wants to speak to B, C, D, E, A must be paired with the B, C, D, E like as the first host. The same for B, C, D, E, operating with the matching method of the first host.

5. Pair with other Brand Helmet Bluetooth Headset

For Example :Paired with V6-1200

5.1.1. S6 and any other brand of a Bluetooth intercom headset is placed within 1 meter apart



5.1.2. Press the V6-1200 Power button, long until the red light flashes and loose, Bluetooth on, long press any B, C, D, E on the host panel, red and blue lights flash to enter the pairing mode.

5.1.3 long press S6 power button 3 seconds to see the blue light for 2 seconds to loose, will listen to the POWER ON prompt and then play power, such as connected to the phone, cannot find the phone and turn to the red blue light flashing, into the pairing state, now press A and Play for 3 seconds, Play button with blue light flashing, into intercom pairing mode, about 120 seconds, V6-1200 blue light, two Bluetooth headset pairing successfully. S6 will have a prompt voice:" the intercom is connected", directly into the intercom mode, you can call the intercom. The V6-1200 has no voice prompt.



5.1.4. **Briefly Press the S6 Play Key to End the Intercom:** to speak again, press the B key of S6 (which key to press the intercom, V6-1200 can not actively initiate or end pairing with other Bluetooth headphones, so it does not support pairing with other brands of Bluetooth headset).

6. Battery Description

Using a polymer battery, make sure to place it in a dry place. If not used for more than three months, charge it once a month to ensure the service life of the product.

7. Product Specifications

Bluetooth Version: 5.1V

Bluetooth protocol Profile:HSP,HFP,A2DP,AGHSP

2 People intercom Distance: 1,200m

Standby time: 400 hours

Working hours: 22 hours

Charging time: 2.5 hours

Charging interface / headphone interface: Android universal plug

Battery type: Rechargeable lithium polymer battery, 800mAh

Power supply requirements: 5V=1A

Operating temperature: 14F~131F (-10 °C ~55 °C)

Storage temperature: -4F~140F (-20 °C~60 °C)

Certification: CE, CE-UK, ROHS, FCC, TELEC (available)

* The actual time may vary depending on the type of phone and usage state.
If the working distance of * is without obstacles, some deviation occurs due to environment and climate.

8. Notes

8.1. The applicable storage temperature of this product is-20 °C to 60 °C, do not store in too high temperature or too low environment, otherwise it will affect the service life of the product;

8.2. Do not Expose this Product to an Open Fire to Avoid Explosion;

8.3. If the Product is not Used for a Long Time, Please Store it in a Dry Place and Charge the Product Regularly (once in three months) to Ensure That the Product Works Normally.

9. Bluetooth Status Indication and Prompt

9.1. Turn on ("Bluetooth connected" when Bluetooth is connected, and the blue indicator flashes once every 10 seconds);

9.2. When Bluetooth disconnects from the phone, you hear "pairing mode" and the red and blue lights flash alternately.

9.3. Low power alarm (prompt "Low battery power, please charge" every 60 seconds)

9.4. Charging state (the red light is long when charging, the red light off the blue light is often lit.Out in 8 seconds.).

9.5. Power on power voice prompt Please charge from 100% power 10%.

Product quality warranty card

Customer Name:	Contact telephone number:
Contact Address:	Product model:
Problem description:	

Warranty Description:

Thank you for purchasing S6 products, to ensure your legitimate interests, please read the following:

This card is the product warranty certification. When the product needs maintenance, please provide the card together with the product.

This card is only valid for products under the warranty, as shown below:

1. Products of the Company obtained through legal and formal channels;
2. Non-human damaged products include, but not limited to the case of improper disassembly and use of natural disasters, not within the scope of warranty;
3. Not exceeding the product warranty period;

Notes include, and are not limited to, the above.

The Company reserves the right of final interpretation.

FCC Statement

This equipment has been tested and found to comply with the limits for a Class B digital device, pursuant to part 15 of the FCC Rules. These limits are designed to provide reasonable protection against harmful interference in a residential installation. This equipment generates, uses and can radiate radio frequency energy and, if not installed and used in accordance with the instructions, may cause harmful interference to radio communications. However, there is no guarantee that interference will not occur in a particular installation. If this equipment does cause harmful interference to radio or television reception, which can be determined by turning the equipment off and on, the user is encouraged to try to correct the interference by one or more of the following measures:

- Reorient or relocate the receiving antenna.
- Increase the separation between the equipment and receiver.
- Connect the equipment into an outlet on a circuit different from that to which the receiver is connected.
- Consult the dealer or an experienced radio/TV technician for help.

Caution: Any changes or modifications to this device not explicitly approved by manufacturer could void your authority to operate this equipment.

This device complies with part 15 of the FCC Rules. Operation is subject to the following two conditions: (1) This device may not cause harmful interference, and (2) this device must accept any interference received, including interference that may cause undesired operation.

RF Exposure Information

The device has been evaluated to meet general RF exposure requirement. The device can be used in portable exposure condition without restriction.