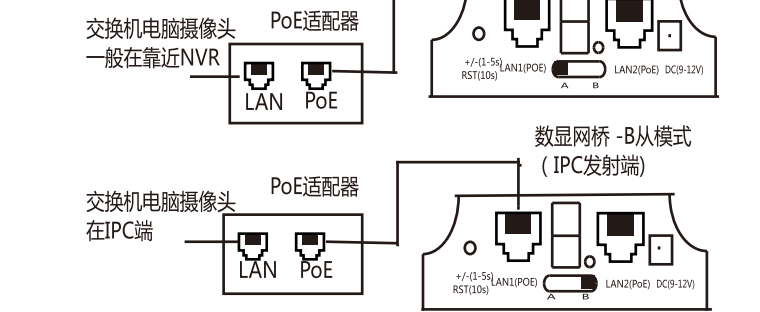


无线网桥说明书

wireless bridge

Model:ZE-CPE820



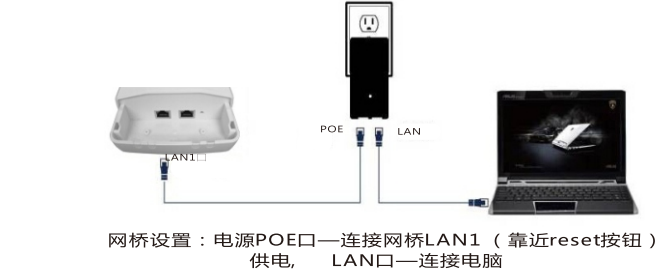
- 1. 首先通过A-B拨码开关设置A B模式，led会出现L并闪烁。L消失后表示配置保持成功
- 2. 通过reset按钮设置led数字显示，按一下，启动配置状态，再按一下自动增加。可以连续增加。
- 3. 假设，配置数字为1的一对网桥A设置成1后，在把B设置成1 期间LED会先闪烁，出现L闪烁表示应用配置，请耐心等待，L后闪烁变成数字1山下后，1会持续闪烁，直到A,B连接成功后，LED显示1常亮，不闪烁，表示AB已经组网成功

Link	网桥连接成功，link灯亮，不连接不亮
LAN1	数据接通点亮，通信闪烁，不亮数据不通
LAN2	数据接通点亮，通信闪烁，不亮数据不通
PWR	电源指示灯，上电点亮
LED	显示H,表示配置为人工设置状态
LED	显示L并闪烁，表示设置应用
LED	闪烁，表示修改配置，或者正在连接中
圆灯	A,B状态灯，不亮表示A模式，亮表示B模式
RST	1-5s短按，led数字自动增加，从0-F循环
RST	长按10s以上，松开复位，系统自动重启

LED	A IP	B IP	2.4 ID	5.8 ID
0	192.168.255.100	192.168.255.200	0	0
1	192.168.255.101	192.168.255.201	1	165
2	192.168.255.102	192.168.255.202	2	161
3	192.168.255.103	192.168.255.203	3	157
4	192.168.255.104	192.168.255.204	4	153
5	192.168.255.106	192.168.255.205	5	149
6	192.168.255.106	192.168.255.206	6	48
7	192.168.255.107	192.168.255.207	7	44
8	192.168.255.108	192.168.255.208	8	40
9	192.168.255.109	192.168.255.209	9	36
a	192.168.255.110	192.168.255.210	10	140
b	192.168.255.111	192.168.255.211	11	132
C	192.168.255.112	192.168.255.212	13	124
D	192.168.255.113	192.168.255.213	96	116
E	192.168.255.114	192.168.255.214	50	108
F	192.168.255.115	192.168.255.215	55	100

高级设置-自定义设置

- 1. 电脑设置调试图如下

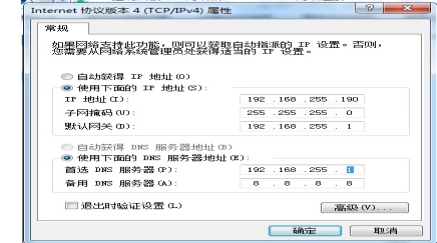


网桥设置：电源POE口—连接网桥LAN1（靠近reset按钮）供电， LAN口—连接电脑

Link	Bridge connection is successful, link lights, not connected Off
LAN1	Turning on the lighting data, the communication flashing, off data nowhere
LAN2	Turning on the lighting data, the communication flashing, off data nowhere
PWR	Power indicator, power on
LED	Display H, expressed configured to manually set state
LED	L displayed and flashes, represents settings
LED	Flashing, it indicates to modify the configuration, or is connected to the
Round light	A, B status lights, light that is not mode A, mode B light that
RST	1-5s press, led digital automatic increase, 0-F from circulation
RST	Press over 10s, release the reset, the system automatically restart

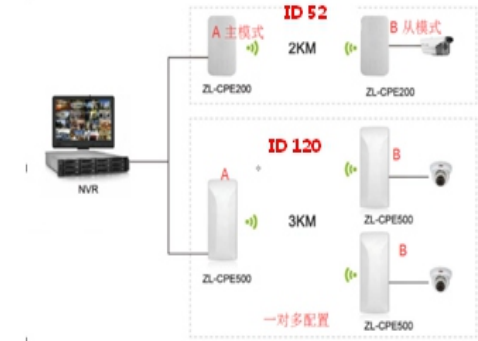
LED	A IP	B IP	2.4 ID	5.8 ID
0	192.168.255.100	192.168.255.200	0	0
1	192.168.255.101	192.168.255.201	1	165
2	192.168.255.102	192.168.255.202	2	161
3	192.168.255.103	192.168.255.203	3	157
4	192.168.255.104	192.168.255.204	4	153
5	192.168.255.106	192.168.255.205	5	149
6	192.168.255.106	192.168.255.206	6	48
7	192.168.255.107	192.168.255.207	7	44
8	192.168.255.108	192.168.255.208	8	40
9	192.168.255.109	192.168.255.209	9	36
a	192.168.255.110	192.168.255.210	10	140
b	192.168.255.111	192.168.255.211	11	132
C	192.168.255.112	192.168.255.212	13	124
D	192.168.255.113	192.168.255.213	96	116
E	192.168.255.114	192.168.255.214	50	108
F	192.168.255.115	192.168.255.215	55	100

- 2. 通电后，配置PC的ip地址，电脑配置的ip地址是 192.168.255.x，如图所示

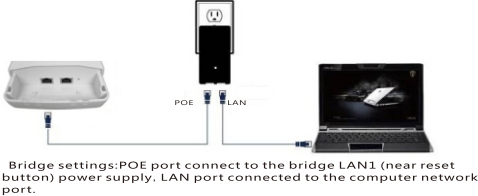


- 3. 通过谷歌浏览器，在IE地址栏输入网桥的ip地址，拨码按照拨码图标，数显按照数显图标，常规的按照背标

- 4. [设置向导]-[网桥设置]或者直接进入[网桥设置]，这里可以关闭拨码或者数显功能

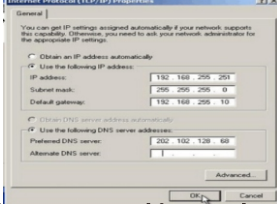


2.The Building Diagram as follows



4 Landing

- 1.After power-on, Connect device LAN2 port to the PC network port, Added IP address and subnet mask of 192.168.255.X segment in PC

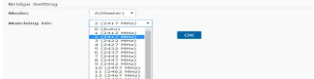


- 2.Open your browser, and input the login IP address of the device (if the device is A enter: http://192.168.255.1; if the device is a B enter http://192.168.255.2) and press Enter for login WEB Management interface.

In order to ensure the best display for WEB , Make sure to use the latest version

A device configuration

- 1.Enter the interface of [Bridge Set]
- 2.Bridge mode is set to mode A
- 3.Set the ID number (The ID number of device A is same with pairing device B)
- 4.After Press the [Application settings] Bottom the configuration is effective



B device configuration

- 1.Enter the interface of [Bridge Set]
- 2.Bridge mode is set to mode B
- 3.Set the ID number (The ID number of device B is same with pairing device A)
- 4.After Press the [Application settings] Bottom the configuration is effective



Note: 1. For One-to-many Setting. The ID number must be same for A device and mroe devices B
2.For more "One-to-many Setting" . Keep the ID number are different, for this can Avoid connecting to each other.

A设备配置方法

- 1.进入【网桥设置】设置界面
- 2.网桥模式设置为A模式
- 3.设置ID号（ID要和配对的B设备的ID号一致）
- 4.【应用设置】后配置即生效

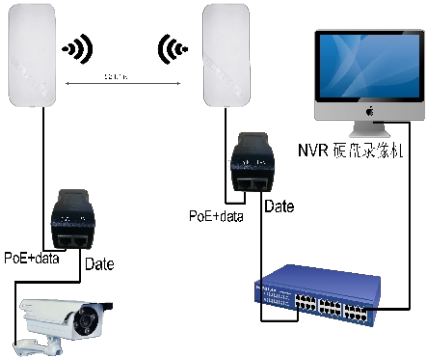


B 模式配置（接收端）

- 1.进入【网桥设置】设置界面
- 2.网桥模式设置为B模式
- 3.设置ID号（ID要和配对的A设备的ID号一

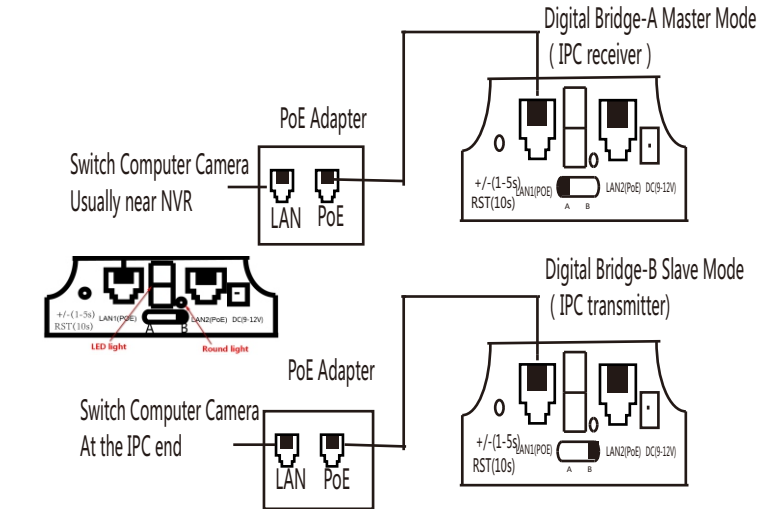


使用示意图



The Wireless Bridge Manual

Digital Display Wireless Bridge



- 1. First Set A B A-B mode DIP switch, led L appears and blinks. After the disappearance of L shows an arrangement remain successful.

- 2. The reset button to set the led digital display, click the startup configuration status, then click the automatic increase. Can be continuously increased

- 3. Assume that a pair of bridges with a number of 1 is configured

After A set to 1, after the B set to 1, during the LED will flash, L application configuration appears blinking, wait, L foot after flashing into a digital 1, 1 will continue to flash until the A, B are connected After the success, the LED display 1 is always on, not flashing, indicating that the AB has been successfully networked.

FCC Warning Statement

Changes or modifications not expressly approved by the party responsible for compliance could void the user’ s authority to operate the equipment. This equipment has been tested and found to comply with the limits for a Class B digital device, pursuant to Part 15 of the FCC Rules. These limits are designed to provide reasonable protection against harmful interference in a residential installation. This equipment generates uses and can radiate radio frequency energy and, if not installed and used in accordance with the instructions, may cause harmful interference to radio communications. However, there is no guarantee that interference will not occur in a particular installation. If this equipment does cause harmful interference to radio or television reception, which can be determined by turning the equipment off and on, the user is encouraged to try to correct the interference by one or more of the following measures:

- Reorient or relocate the receiving antenna.
- Increase the separation between the equipment and receiver.
- Connect the equipment into an outlet on a circuit different from that to which the receiver is connected.
- Consult the dealer or an experienced radio/TV technician for help.

This device complies with part 15 of the FCC Rules. Operation is subject to the following two conditions: (1) This device may not cause harmful interference, and (2) this device must accept any interference received, including interference that may cause undesired operation.

RF Exposure Statement

To maintain compliance with FCC's RF Exposure guidelines, This equipment should be installed and operated with minimum distance of 20cm the radiator your body. This device and its antenna(s) must not be co-located or operation in conjunction with any other antenna or transmitter.