



Category

REMINDER.....	2
Installation guide	3
1. Install a Micro SD card. 32GB-256GB.....	3
1) Format the memory card on your S2 dash camera.	4
2) Format MicroSD card on the computer.....	4
Reminder:	5
2. What's in the box?	6
3. Camera overview	6
Button Function Explanation.....	6
4. LED indicator	7
5. Install dash cam.....	7
5.1. Install dash cam without GPS	7
5.2. Install dash cam with GPS.....	9
5.3 Rear Camera Installation:.....	10
System	11
Screen Overview	11
Basic Operation.....	12

There are two ways to power ON/OFF the camera	13
MENU Settings	13
Viewing Video/Photos on the Camera.....	21
WiFi & APP & GPS	22
Download APP	22
Connect phone to S2	22
How to view GPS logs?	34
Export the videos & photos to PC.....	42
Specifications	43
To avoid damage:.....	44
Warranty & Support.....	44
Trouble Shooting.....	45
System Update.....	47
Hardwire Kit	49

REMINDER

(Please read the manual carefully before use).

After-sale service team e-mail: support@iiwey.com

- ✔ 32GB SD card is installed in the front camera, please check the card slot.
- ✔ Please connect to power and charge the S2 dash cam for 5 minutes at least before use. The dash cam will turn off within 5 seconds when you turn off the engine, it is default setting to save power for parking monitoring and emergency video backup.
- ✔ After stop recording each time, please wait for 2-3 seconds until the dash cam saves all the videos before performing other operations. High frequency operation may cause the screen to freeze, if you encounter this problem, you can reset the camera (tap the rest hole). When the dash cam is recording, we can't operate the dash cam through the touchscreen, unless we press the OK button to stop recording first, then we can use the touchscreen to operate.
- ✔ The dash cam comes with Reversing Aid function. If you need this function, please connect the **Red Wire** of the rear camera to the live wire of the reverse lamp. If you don't need this function, please ignore the red wire and hide it, just connect the

2

do not use U1 class. Because S2 model with a high configuration, SD card needs high read and write speed to work well. U1 can't meet this demand very well. If you use a U1 memory card, the camera will prompt 'card slow' after a period of use (choose the SD card like below). Please format the SD card on the dash cam and computer before the first use.

1) Format the memory card on your S2 dash camera.

[Carefully insert the memory card into the camera's card slot until it clicks. To remove the card, power off the camera first, then push the card into the slot until it clicks again.]

Insert the memory card and connect to power, if the dash cam start recording automatically please click the **Start/Stop Recording** icon (the icon in the lower left corner of the screen) to stop recording first, then click the **MENU Setting** icon (Icon in the lower right corner of the screen) to enter the MENU setting page, swipe your finger UP on the screen to find the Format function.

If you meet 'Card error' 'Memory error' after you format it on the camera, please format the memory card again on the computer.

2) Format MicroSD card on the computer

If you use a 128GB or 256GB memory card and meet a 'memory error', this step is very necessary.

Format on the Mac. Please format it to 'exFAT'

4

rear camera to the main camera, these two cameras will work well without any problem. Since the reversing lamps are different for each car, we cannot provide precise installation guidance for the red wire. It is recommended to consult a professional if you need to install the red wire.

- ✔ The dash cam has GPS function. After installing the GPS, you needn't to set the time manually. You just need to set the **time zone** according to your location and choose **the summer time (If in summer)**. Then the time will rectify itself.

Installation Video guide

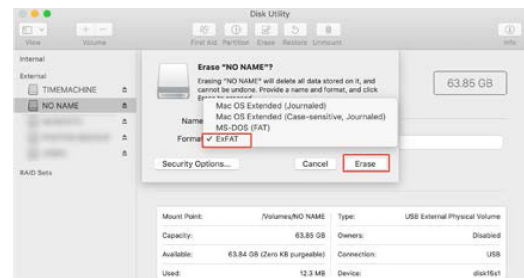
<https://youtu.be/rUYGSv1FXQk>

The video Guide shows **How to install the S1 dash cam**, S2 is the upgraded version of S1 model. It gets a great improvement in chip, image sensor and system. But the installation method of the two models is the same, the only difference is that we choose a different rear-view camera for S2 kit to satisfy more people demand. The rear-view camera of S2 is waterproof, you can refer to the video guide to install it in the car, you can also install it outside the car. The rear camera installed outside has a better video performance than installed inside the car.

1. Install a Micro SD card. 32GB-256GB

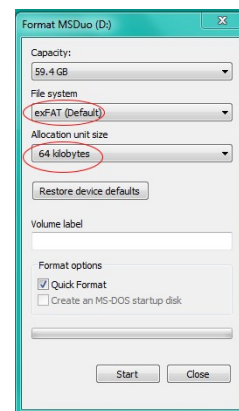
Reminder: We recommend a Class 10 and above U3 MicroSD card,

3



Format on the Windows. Please format it to 'exFAT'

Reminder: Set the 'Allocation unit size' to 32KB or 64KB



Reminder:

1. Ideally, the MicroSD card should be formatted every 2 weeks to

5

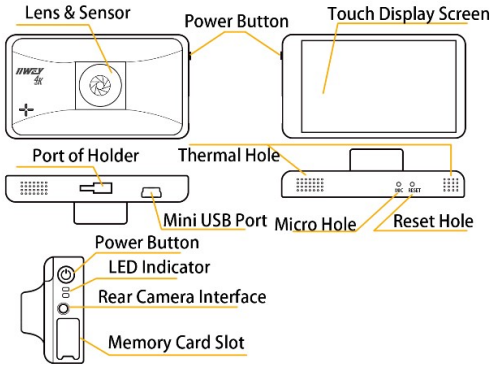
maximize the lifetime of the memory card.

2. Please do not remove the card while the camera is recording to prevent data loss/corruption.

2. What's in the box?

IIWEY S2 Dash Cam Main Camera	
1080P Rear Camera	Suction Mount
USB Data Cable	User Manual
Warranty Card	GPS
Car Charger with Built-in Mini USB Cable	

3. Camera overview



Button Function Explanation

Name	Function Explanation
Power button	1. Short press to power it on 2. Press 3 seconds it powers off when it powers on 3. Press it a short time to extinguish the screen and light it up again
Reset button hole	When the device is out of control or destroyed, please press this button by reset needle or other tools to restore the device
Mini USB Port	Mini 5pin port

4. LED indicator

Charge Indicator Red light. It always light on when the device is charged, and it goes off when it is fully charged.

Active Indicator Blue light. Flashes during recording, and always on when recording stops.

5. Install dash cam

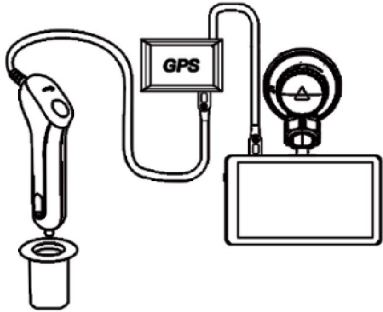
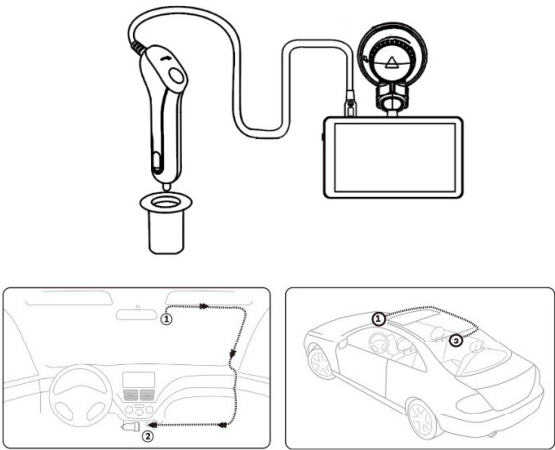
5.1. Install dash cam without GPS

- Plug the rear camera connecting cable into the ③ rear camera connecting port, and install the ③ rear camera properly.(NOTE: the rear camera can be installed inside or outside, it is waterproof. We recommend you install it outside to get a batter video quality)
- Adjust the ① Dash Cam to keep the lens level with the ground.
- Start the car engine to check if the ① Dash Cam is working properly.

5.2. Install dash cam with GPS

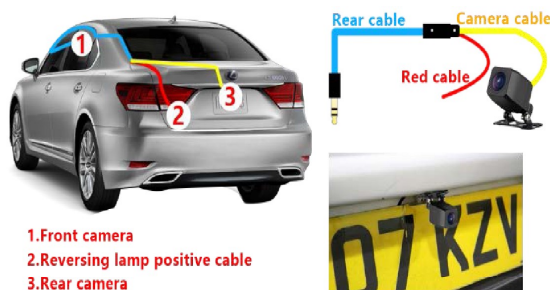
Stick the GPS on the windshield, then connect to car charger and main camera. **NOTE: GPS symbol will keep flashing if there is no GPS signal or the dash cam has not received GPS signal. It will become stable status and stop flashing once it receive GPS signal** (Under normal circumstances, the GPS receiver will detect the GPS signal within 2 minutes as soon as the car running on the road).

- Turn off the car engine.
- Fix the IIWEY ① Dash Cam onto the suction mount.
- Stick the car mount onto your car windshield (ideally right in the middle).
- Connect the USB cable to the micro USB port of the ① Dash Cam. Run the cable along the edge of the windshield, tucking it away in the seams, and extend it all the way to the USB port of the ② Car Charger. Be sure to keep it away from the airbag area.
- Insert the ② Car Charger into your cigarette lighter, connect the ① Dash Cam to the Car Charger.



5.3 Rear Camera Installation:

- ①. Remove the protective film on the bracket;
- ②. Install the bracket on the camera and adjust it to a suitable position;
- ③. Press the bracket firmly on the windshield, and turn the bracket knob to the specified position



Picture 1



Picture 2

10

4. Video Lock Button
 5. Folder
 6. WIFI
 7. Recording Status
 8. Remaining Recording Time
 9. WIFI OFF
 10. GPS Symbol
 11. Loop Recording
 12. WDR
 13. Parking Monitor
 14. Current Video is Locked
 15. Motion Detection
 16. Audio ON
 17. MicroSD Card Installed (Package not include SD card)
 18. Power Connected
- Reminder: You can swipe left and right on the screen to switch the front and rear lens view.

Basic Operation

REMINDER: Touch and swipe to complete all settings, please remember some convenient operations:

Switch display mode: swipe to right

Menu function search: swipe to left after entering the MENU setting to switch to the next setting page.

12

The rear camera is waterproof, so you can install it outside the car like the **Picture 1** shows, or you can install it inside the car like **Picture 2** shows.

REMINDER: The rear camera comes with reversing aid function, if you need it please connect the red wire of the rear camera to the live wire of the reversing lamp. If you don't need this function you don't need to connect the red wire.

System

Screen Overview



1. Start Recording/ Stop recording
2. Take photo
3. MENU setting

11

There are two ways to power ON/OFF the camera

A. Manually

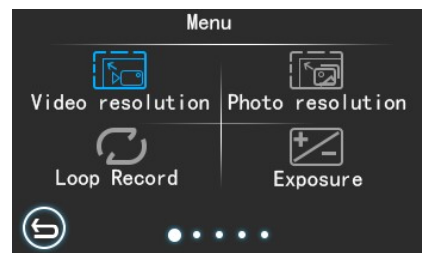
Single press the Power Button to power ON the camera unit, long press the button to power it OFF.

B. Automatically

When connected to the car charger, the camera will auto-power ON after starting your car and the battery charging will commence. The camera will power OFF in 5 seconds after you turn off the car engine.

MENU Settings

After powering ON the camera, click the MENU icon to enter the setup process.



-Video Resolution: By default (SINGLE FRONT mode) the front camera will record at 4K (3840*2160P @30fps), you can choose 2.5K (2560*1440P@30fps), 1920x1080P@60fps or 1920x1080P@30fps. In DUAL CAMERA RECORDING MODE (FRONT CAM+REAR CAM), you can choose 4K

13

(2160P@24fps)+1080P or 2.5K+1080P@30fps. **REMINDER:** when you set the dash cam recording mode to SINGLE FRONT, the dash cam will automatically cut off the rear camera signal, the display will only show the front camera view, when you switch it to DUAL CAMERAS MODE, it will restore to two cameras view.

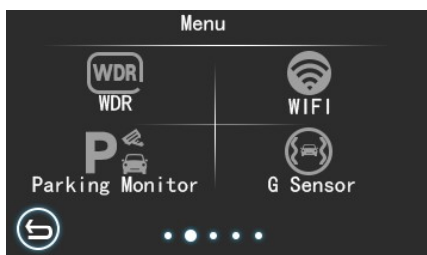
-Photo Resolution: Default is set to 12M 4032x2034.

Other options: 10M 3648x2736; 8M 3264*2448; 5M 2992X1696; 3M 2048X1536; 2MHD 1920X1080; VGA 640*480; 1.3M 1280X960

-Loop Record: By default the camera will cycle record at 3minutes per video clip. Click icon to change the duration: 1, 3, 5, or OFF. When the SD card is full, the dash cam will overwrite the oldest video for continues recording.

-Exposure: Default is set to 0.0. +2, +5/3, +4/3, +1.0, +2/3, +1/3, +0.0, -1/3, -2/3, -1.0, -4/3, -5/3, -2.

Adjust the amount of light entering the lens.

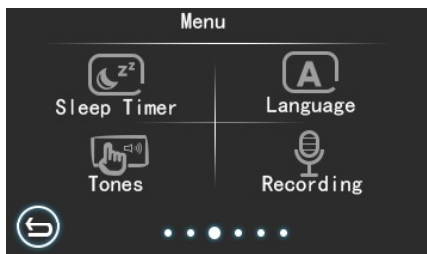


-WDR: Wide Dynamic Range. Default is ON.

14

video will be locked). ② If the dash cam does not connect to any external power, it will automatically shut off usually after you turn off the engine. At that time the dash cam will auto power on and record a 30s emergency video when it detect collision and shake, then auto shut off after that. So we recommend to hard wire your dash cam if you want to use the Parking monitor function well.

-G-sensor: Default is set to Low. You can choose off/ Low/ Medium/ High. We recommend you set it to Low level sensitivity.



-Sleep Timer: Default is set to 3 Minutes. You can choose to off/ 1 minutes/ 3 minutes/ 5 minutes/ 10 minutes. If you set it to 1 minute, the screen will auto shut down if there is no operation within 1 minute.

We recommend you set the Screen save to 1 minutes or 3 minutes to reduce power consumption and heat, to extend camera and memory card life.

16

-WIFI: Default is set to OFF. Please turn off the WIFI if you don't use App. Turning on WIFI for a long time when dash cam is recording will cause unnecessary power consumption and affect the video recording.

The dash cam WIFI is AP mode, also named Local mode, NOT an IP/4G Dash Cam - It does NOT allow you to view your recording remotely. The dash cam WIFI can only work when the dash cam is ON and you are close to the dash cam within 10-ft.

NOTE: after connect to WIFI, you cannot operate on the screen except Start or Stop recording, Lock or unlock video, and turn off WIFI. If you do other operation, the dash cam will prompt 'please disconnect WIFI'.

-Parking Monitor: Default is set to OFF.

If you set the parking guard to ON, there are two different situations after the parking guard is triggered: ① if the camera remains connected to the power source even after turn off the engine (such as you connect it to the power bank with USB cable or you have hardwired your S2 dash cam), the dash cam is continues recording under this situation; if you turn off the dash cam manually (long press the POWER button) after parking, the dash cam will automatically power on the and start to record a 30s emergency video when it detect collision and shakes, and the dash cam will be continues recording after the 30s emergency video (Emergency

15

-Language: Default is set to English.

-Tones: Default is set to off.

-Recording: Default is set to ON.



-Motion Detection: Default is set to off. When you turn it on, the dash cam will automatically start recording when the front camera detect object move. The front and rear cameras will record at the same time but please note: the motion sensor is installed in the main camera, so the dash cam does record only when the front camera detect motion.

The dash cam will record a 22 seconds videos normally if the motion detection is triggered. If the front camera does not detect the object move after the 22 seconds video recording finished, the dash cam will stop recording, otherwise the dash cam will continue to record.

REMINDER: We recommend to turn off the motion detection

17

function when driving, and turn it on after parked. This function only work when the dash cam is Turned ON, so we recommend you connect the dash cam to an external power or hard wire it after parked if you want to use the Motion Detection and Parking Monitor function well.

-Frequency: Default is 50Hz. Options: 50Hz/60Hz

To set or reset the frequency of the AC power to reduce interference of fluorescent lights (We recommend to set it to 50Hz).

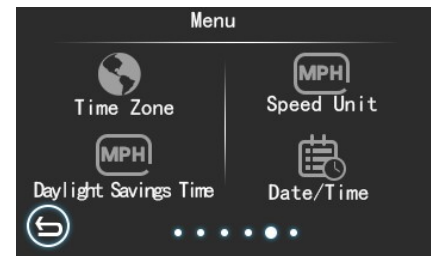
-Reverse Power: Default is set to ON. You can switch the rear camera from Mirror mode to Normal mode.

Mirror Mode: when you watch the rear camera video on the display, the things on the right are actually on the right side behind you, but when you playback the video on your PC, it will shows the things on the right are actually on the left side behind you. If you need the Reversing function, please set the mode to Mirror Mode.

Normal Mode: This mode is exactly the opposite with the Mirror Mode, when you watch the rear camera video on the display, the things on the right are actually on the left side behind you, but when you playback the video on your PC, it will shows the things on the right are actually on the right side behind you.

-GPS: Only when you connect the GPS it will shows on the MENU setting page. GPS symbol will be turn green when it receives signal.

18



(These functions shows on the MENU setting when you connect tot GPS module)

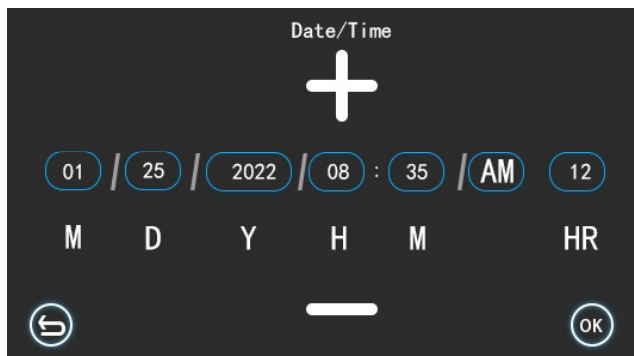
-Time Zone: Default is set to GMT+0:00. From GMT-12:00 TO GMT+12:00. **Please set it to correct one according to your location**, because the GPS will automatically correct the time, so if the Time Zone is incorrect, it will affect the time you set.

-Speed Unit: Default is set to KM/H. off/ MPH/ KM/H.

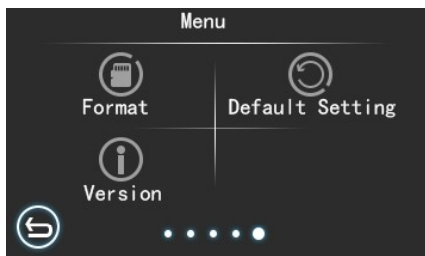
-Daylight Saving Time: Default is set to off. Please turn it on when your location use summer time.

-Date/Time: You can set the time here. When setting the Year, the year setting will flash. You can select the correct year by clicking the up and down arrows. After completing the year setting, click on the month to switch to the month setting. The setting method is the same as Year setting. After all the settings are completed, click the confirm button.

19



[DATE/TIME setting page]



-Format: Options: No/Yes

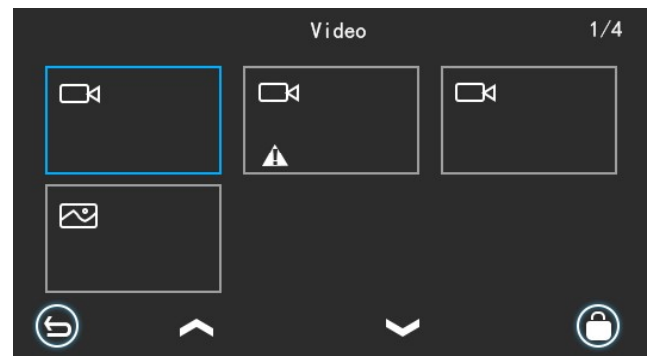
All data will be deleted when you click yes. This function will format (erase all data) the MicroSD Card.

20

-Default Setting: Restore factory settings, this option will erase all your previous settings.

-Version: To check the device version.

Viewing Video/Photos on the Camera



Please confirm the camera is stopped recording, click the **Video Folder** to find all the videos (include front and rear cameras videos) and photos. You can playback, delete, lock and unlock the videos in this mode. Swipe up or down on the screen or swipe left or right to see more videos.

The **Exclamation Mark sign** means this video is locked, when you playback the locked videos on the camera, you can see a symbol of small 'KEY' on the top of screen.

21



WiFi & APP & GPS

Download APP



WitCam Pro
(For Android)



WitCam
(For IOS)

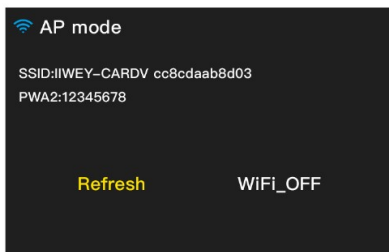
Android

--Download APP **"WitCam Pro"** from Google Play.

--Download APP **"WitCam"** from App Store

If you cannot find the App in the play store, please download APK file from Google cloud: <https://bit.ly/3zh2aBb>

22

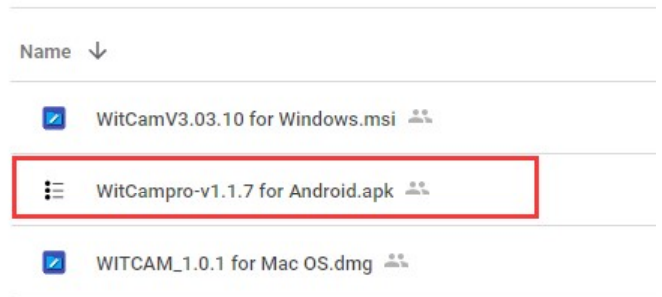


2. Turn on the WIFI function of your smart phone, find SSID name, input password, and connect WIFI.

-REMINDER: After you connect to the WIFI, android smart phone will have a prompt **'the WLAN network has no internet access. Connect anyway?'**, please select **'CONNECT'** otherwise you cannot use the App well.

IOS smartphone doesn't have this prompt.

24



(How to install apps outside of Google-play)

<https://www.nextpit.com/install-apps-outside-of-google-play>

(Please use the second way to install App if you can't find "WitCam Pro" from Google Play)

IOS

Connect phone to S2

1. Click WI-FI button on the screen to turn on the WI-FI, it will show SSID name and password, SSID name is like:

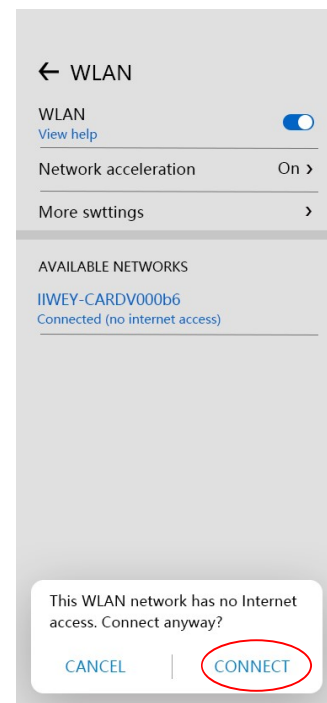
IIWEY-CARDV000b6,

Default Password: **12345678**

(Each device has a separate WIFI name, but all start with

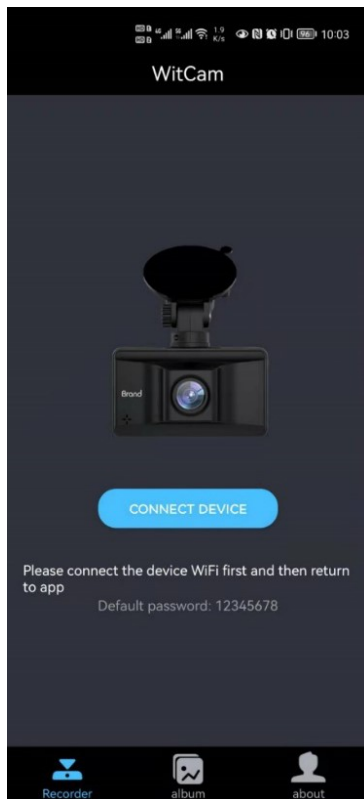
IIWEY-)

23



3. Open **"WitCam"** on the phone, the App will show the dash cam model you are using. You can press the **CONNECT** button to connect the dash cam now.

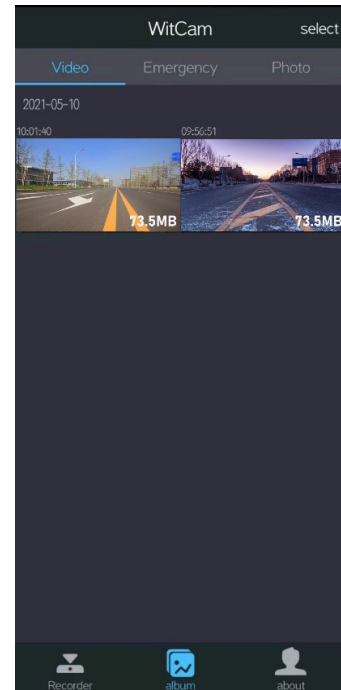
25



26

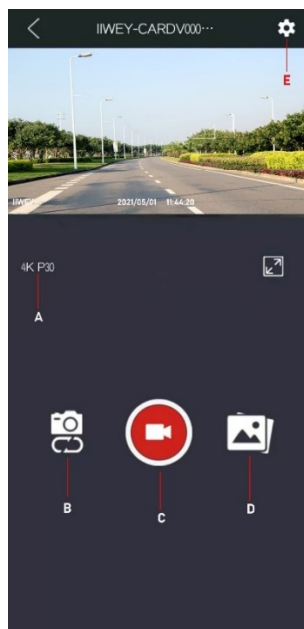
ALBUM PAGE

All the downloaded photos and videos will be saved here.



27

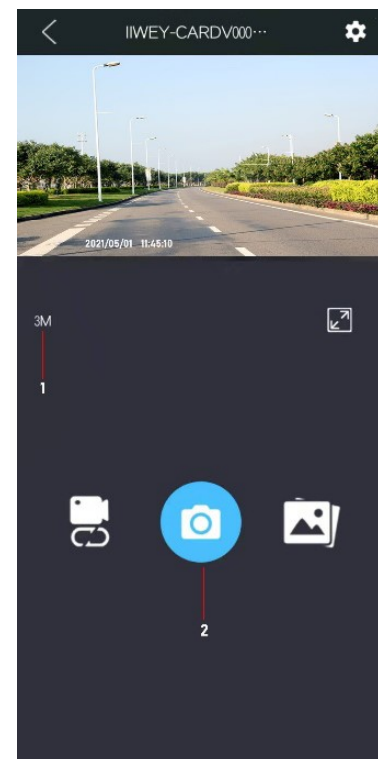
APP GUIDE:



- A: Resolution
- B: Record mode & Photo mode switch button
- C: Start/ Stop Record button
- D: Folders
- E: Setting

28

PHOTO MODE

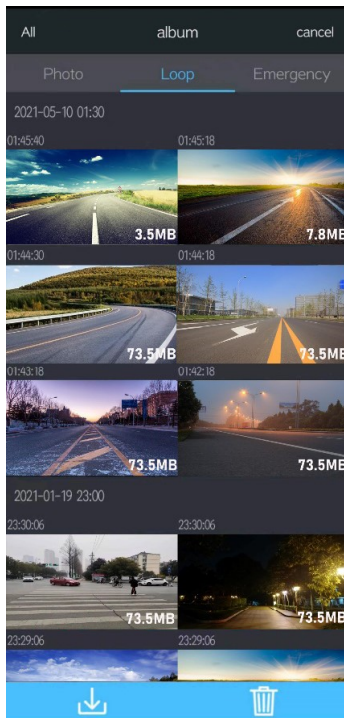


- 1: Photo resolution
- 2: Take Photo

29

FOLDERS

Download and playback the video



Three folders: Photo Loop, and Emergency

Photo: Saved all the photos

30

Loop: Saved all the loop recording videos

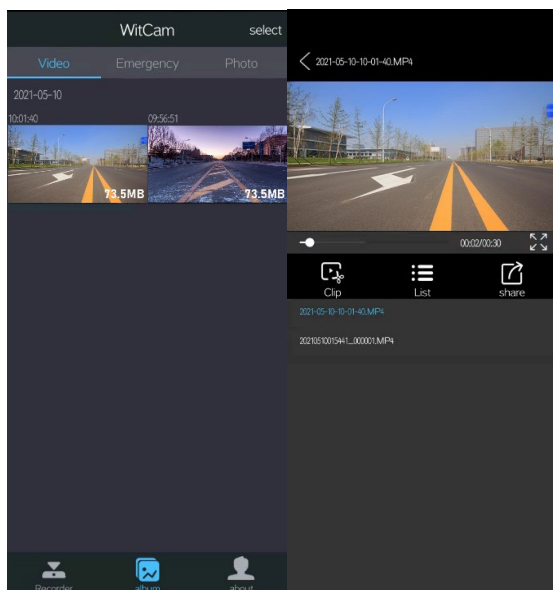
Emergency: Saved all the locked videos

- When you enter the Loop folder, click the 'select' button on the upper right corner or long-press the video file, you can download or delete the video you want.
- When you enter the Emergency folder, you can only download the locked video, cannot delete the videos.
- You can playback the videos on the folders directly or download it to your phone, then back to the Home page of App, enter the Album to playback, edit, or share the videos downloaded.

Edit and share the videos

After you download the video, please return to the **Home Page of the App**, enter the **Album**, click the video to playback AND edit. You can check the GPS logs and share the video from here.

31

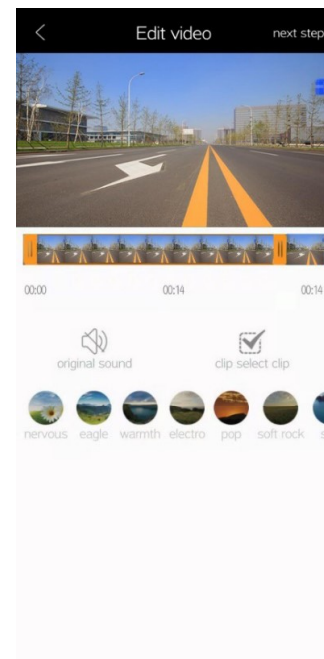


Click the **Clip** button to enter the **Edit page**:

(This is an extended function, if you are interested you can try it. It is used to intercept video clips and add background music)

When you finish the Edition, click 'next step' to share the video.

32



REMINDER: If it stops at 95% progress during the download process, rectify by the following method:

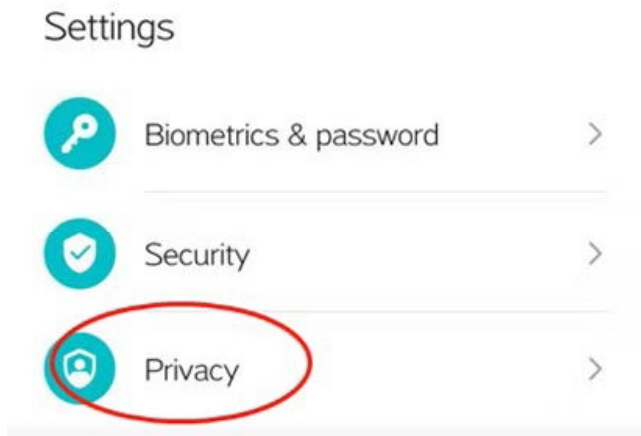
- ① Please make sure that your phone is always connected to WIFI. (Please note: If the phone screen shut down during the download process, the camera's WIFI connection may be

33

disconnected, so please keep the phone during the download process. The screen keeps on);

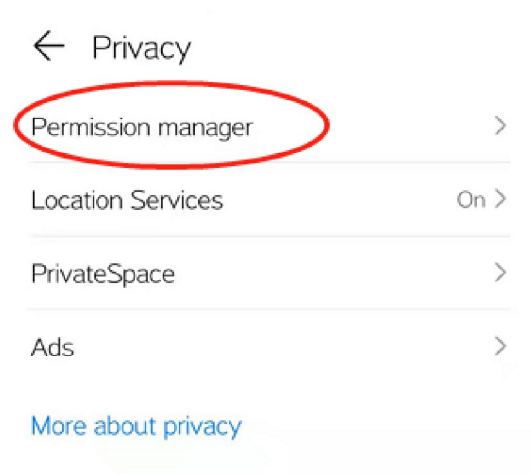
- ②. Please confirm that the **Storage Permission** of the APP is allowed. The below shows **how the Android phone and IOS** to set the permission of APP:

Android:

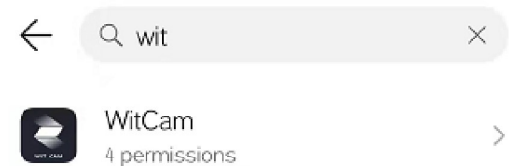


1

34

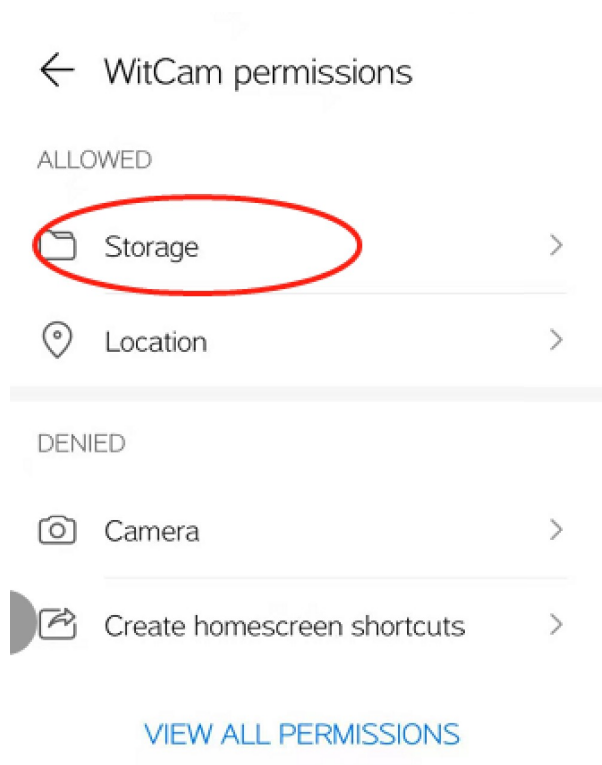


2



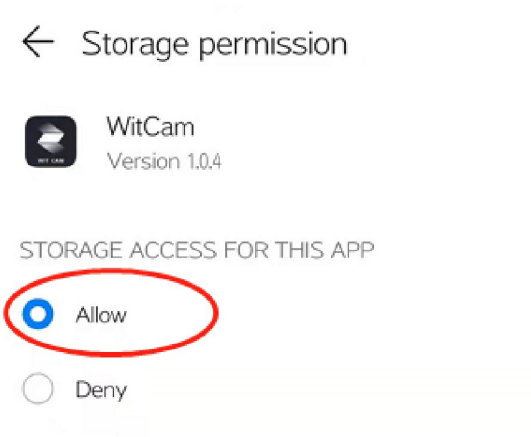
3

35



4.

36



5.

37

IOS:



38

NOTE: Since the WIFI transmission rate is limited so it will takes a while to download the entire video by WIFI. You can also export the video to your computer to check the videos.

How to view GPS logs?

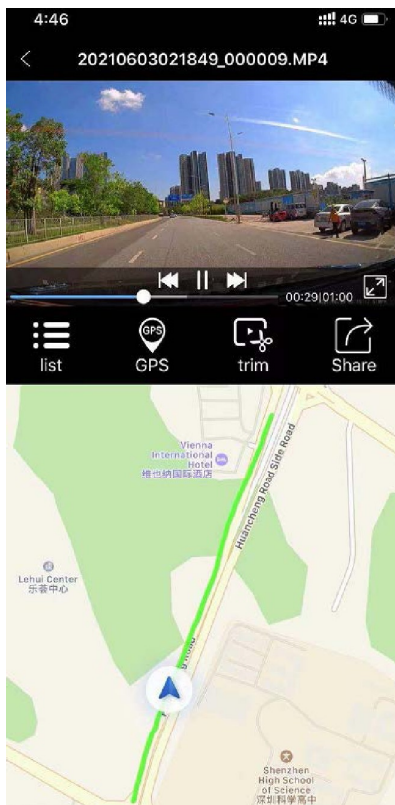
The GPS carried by the S2 model dash camera is a trajectory tracking device that can only display the driving track and does not have positioning function and the real-time path feature, in other words, when you view the real-time video through the APP while the camera is working, you cannot view the GPS track.

You have two ways to view the GPS LOGS:

View on the APP: ①. Download the video to your phone ②. Return to the Home page of the App, open the album to playback the video.

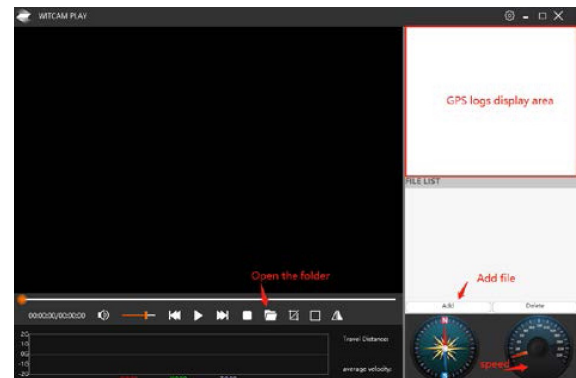
(NOTE: if you use an Android phone, please disconnect the dash cam WI-FI on your phone and turn on the SIM data (or you can connect your family WIFI) when playback videos, because the Android phone is a **Single Signal Channel** device, you need to ensure your mobile phone can access the internet when viewing the GPS logs).

39



40

View on the PC: You can export the video to your computer and play it using the 'WITCAM' PC Version.



WITCAM PC Version downloaded address:

Google cloud drive: <https://bit.ly/3zh2aBb>

Witcam

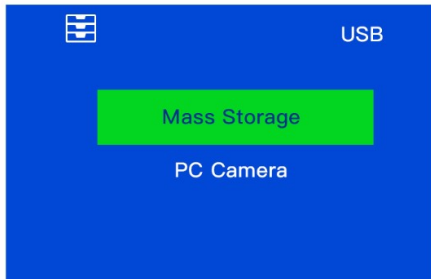
Name ↑

- WITCAM_1.0.1 for Mac OS.dmg
- WitCamV3.02.04 for Windows.msi

41

Export the videos & photos to PC

- 1) Turn off the dash cam first. Connect the supplied USB Connection Cable to the Mini USB Port on the side of the unit.
- 2) Connect the full size USB end of the cable to a USB Port on the Computer.
- 3) The unit will automatically power on and display 'PC Camera' 'Mass Storage' (NOTE: When connected to your computer under 'Mass Storage' status, standard camera setup and operations will be disabled; if you select 'PC camera', the dash cam will be recognized by the Camera of your computer instead of Storage, you can use your computer camera to take photo through the S2 dash cam when under the 'PC camera' mode).



- 4) Click the 'Mass Storage' and wait a few moments, the storage folder for the unit will appear on the computer screen. Enter the secondary directory, you will see all the folders:

42

Sensor Pixel	2M
View Angle	Front 170° Rear 150°
Memory Card	MicroSD Card 32GB-256GB U3
Car Charger	DC 5V 2A
USB port	Mini USB 2.0
Lens	f/1.8 6G
Storage	Video: MP4 Photo: JPEG
Working voltage	5V
Working temperature	-4°F-149°F

To avoid damage:

- ⚠ In hot weather, do not expose the camera directly to the sun when the car is parked.
- ⚠ In extreme winter conditions, i.e. 4°F (-20°C) or lower, detach the camera from the windshield when not in use, and store in the glove box.

Warranty & Support

Warranty

The IIWEY S2 Front and Rear Dash Cam comes with a full 12 months warranty.

Support

If you have any questions regarding your product, please do not

44

- EMR
- Movie
- Parking
- Photo

2021/1/11 2:56
2021/1/11 2:49
2021/1/11 2:54
2021/1/11 2:49

- 5) Open the videos by the GPSplayer, you can check the GPS logs. If you don't want to use the GPS player and just want to playback the videos and cannot find a compatible player on your PC, please search and download this player: **VLC Player**

NOTE:

GPSplayer (If your PC is Windows) Compatible computer operation system: Windows XP; Windows Vista; Windows 7; Windows 8 and Windows 10.

Specifications

Processor	NTK96670
Display Screen	3.0 inch 360 x 640 HD touch screen
Video Resolution	4K 2.5K 1080P
Image Sensor	Front: Sony IMX 335 Rear: GC2053

43

hesitate to contact us at support@iiwey.com, or drop us a message through the message chat box at Amazon, you can find it from your order details page. Queries are typically answered within 12-24 hours.

Reminder: There will be slight heat on the back of the dash cam and touch screen when you use it. This is a normal phenomenon, almost all electronic products will be hot, just like if you use your smart phone when charging, it will get heat. The dash cam is also the same. A high-configuration dash cam generates more heat than a low-configuration ones because it processes faster and processes more content. But please don't worry, we use the VO grade fireproof material (high temperature resistance) and high-performance processors (NTK 96670) to solve this problem well, 100% guarantee the experience and safety of the dash cam.

Trouble Shooting

? Can't turn on the dash cam.

Please connect to power and charge the dash cam 5 minutes at least, and then reset the dash cam to restart it. If it still can't turn on, please update your dash cam (check the tips of 15th).

? Dash cam screen freeze.

Operation speed is too fast or high-frequency operation will cause this issue in some case, you need to reset the dash cam with tool

45

needle.

? There is a prompt of 'memory error' when playback the videos on the camera, or some rear camera video can't show pictures when playback on the PC.

You can update the dash cam to solve this problem easily (check the tips of 15th).

? Can't connect to WIFI or disconnect frequently.

- 1) Please confirm your phone setting is correct - when the mobile phone is connected to a WLAN that cannot connect to the Internet (because the dash cam WI-FI cannot connect to internet), please confirm that it will not automatically switch to another network.
- 2) Close the mobile data before connect to the WIFI.
- 3) Choose 'USE' if your phone prompt the WLAN cannot connect to internet.
- 4) If you still can't connect to the WIFI, please reset the dash cam or update the system.

(Note: After connected WIFI, if you start to operate on the dash cam screen, you need to disconnect the wifi first)

**? Dash cam automatically turn it on and off frequently
If you come to this problem during use:**

- A: 1) Please confirm that you have a correct memory card. We recommend to use a Samsung or Kingston U3 model memory card.
- 2) It may cause by poor contact of cigarette lighter socket, please

46

up the necessary files before this).

2. Download the **S2 update software** to your memory card. (NOTE: since we have several models include S1, T2, S2 so please choose the correct model number when you download the upgrade software.)
3. Insert the memory card into your S2 dash cam and connect to power, please wait 10 seconds until the update is completed (when the dash cam system is updating you can see the blue light flashing, the blue light will stop flashing once the system update is complete).
4. The dash cam will automatically power on and start recording after the system was updated. Please stop recording first and **format the memory card** on the dash cam again. Otherwise, the dash cam will update itself again due to the update system is still in the memory card.

If you don't have a card reader:

1. Please connect the dash cam to your computer through the USB cable included.
2. Click 'Mass storage' to enter the file mode and format the SD card on the computer.
3. Access the website to download the updated software into the SD card.
4. Please disconnect the dash cam to the computer and connect to power, the dash cam will automatically start to update the system (when the dash cam system is updating you can see the blue light

48

make sure that the cigarette lighter is inserted deep enough. And you can move the dash cam to another car, and test if this problem is cause by your car cigarette lighter socket.

If you meet this problem after you turn off the engine.

Please format the memory card according to the guideline '**Install a MicroSD card**' on the computer. And then turn off the motion detection and park monitor function to try again. (Because when you turn on these functions after parking, the dash cam will automatically turn it on and recording emergency video when it detect collisions and shocks. At this time, if the dash cam built-in small battery can't support the dash cam to record, it will turn off immediately, so the camera will switch on and off repeatedly. Due to the built-in battery is used to back up emergency videos, so if you want to use the dash cam after turn off the engine, the external battery is needed, like a power bank.)

System Update

Access our home page to download the Updated software.

www.iivey.com



Follow the steps bellow to update the S2:

If you have a card reader:

1. Please format the memory card on your computer (Please back

47

flashing, the blue light will stop flashing once the system update is complete).

4. The dash cam will automatically power on and start recording after the system was updated. Please stop recording firstly and **format the memory card** on the dash cam again. Otherwise, the dash cam will update itself again due to the update system is still in the memory card.

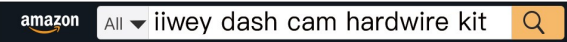
Hardwire Kit

If you want to make your dash cam work for 24hrs (Power on even if you turn off the car engine)

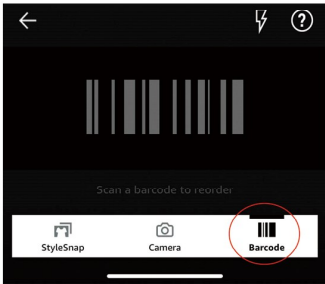
An iivey dash cam hardwire kit will help you do this! This kit will keeps supply power to dash cam even your car engine is off, which will make your dash cam work and protect your car overnight! And it come with **Low Voltage Protection**, **once the voltage is lower than 11.6V, it will cut the power supply, leaving enough power to ignite the engine**

49

Search iiwey dash cam hardwire kit on amazon



Or Scan Barcode on amazon app



Find the right one!

UK
CA

CE

FC

RoHS



Made in China

This device complies with Part 15 of the FCC Rules. Operation is subject to the following two conditions: (1) this device may not cause harmful interference, and (2) this device must accept any interference received, including interference that may cause undesired operation.

NOTE: This equipment has been tested and found to comply with the limits for a Class B digital device, pursuant to Part 15 of the FCC Rules. These limits are designed to provide reasonable protection against harmful interference in a residential installation. This equipment generates, uses and can radiate radio frequency energy and, if not installed and used in accordance with the instructions, may cause harmful interference to radio communications. However, there is no guarantee that interference will not occur in a particular installation.

If this equipment does cause harmful interference to radio or television reception, which can be determined by turning the equipment off and on, the user is encouraged to try to correct the interference by one or more of the following measures:

- Reorient or relocate the receiving antenna.
- Increase the separation between the equipment and receiver.
- Connect the equipment into an outlet on a circuit different from that to which the receiver is connected.
- Consult the dealer or an experienced radio/TV technician for help.

Warning: changes or modifications not expressly approved by the party responsible for compliance could void the user's authority to operate the equipment.

Radiation Exposure Statement

This equipment complies with FCC radiation exposure limits set forth for an uncontrolled environment. This equipment should be installed and operated with minimum distance 20cm between the radiator and your body.