

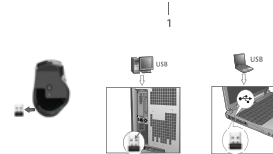
Installation Guide

Model: MK365



Product warranty period: 12 Months
Service email: sales@sz-deying.com

Package Contents: 1. Keyboard 2. Mouse 3. Receiver 4. User Manual

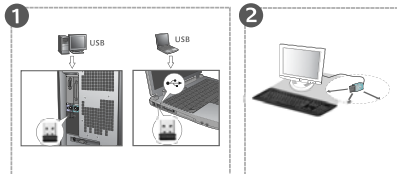


1. Take out 2.4G USB dongle from the battery slot of mouse
2. Insert 2.4G USB dongle to USB port of PC
3. Keyboard and mouse will connect with USB dongle automatically.



Battery Installation:

1. Insert 2 AAA battery into the keyboard battery slot.
2. Insert 1 AA battery into the mouse battery slot, and turn on the power switch.



2.4G dongle pairing

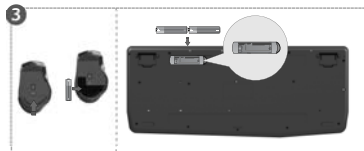
This keyboard and mouse combo is connected to the 2.4G dongle automatically, plug and play. But sometimes they may lose connection, then we need pairing them again manually:

Keyboard pairing:

Insert the 2.4G USB dongle to PC. Hold ESC+Q, then the keyboard battery indicator will flash and keyboard start to pair with the 2.4G USB dongle. When the battery indicator stops flashing, keyboard and dongle are connected.

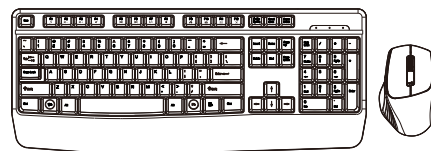
Mouse Pairing:

Insert the 2.4G USB dongle to PC. Hold right click and scroll wheel, the mouse battery indicator will flash and mouse start to pair with the 2.4G USB dongle. When the battery indicator stops flashing, mouse and dongle are connected.



Keyboard Multimedia Function.

- | | | |
|-----------|------------|-------------|
| Music | Next Track | My Computer |
| Volume- | Play/Pause | Favorites |
| Volume+ | Stop | |
| Turn off | Web Home | |
| Pre Track | E-Mail | |



Keyboard Specification

Connectivity: 2.4Ghz wireless
Colour: Black
Key Qty.: 104 keys
Key Travel: 5.5mm
Key Force: 55g ± 7g
Power: 5V=100mA
Key Life: 5 Million
Keystrokes Dimensions: 448 x 184 x 27 mm
Net weight: 540 ± 10g
OS Support: Windows 2000 / XP / ME / Vista / 7 / 8 / 10 / Android / linux / Mac OS

Mouse Specification

Connectivity: 2.4Ghz wireless
Colour: Black
DPI: 1000/1200/1600
Key Qty.: 6 keys
Power: 5V=100mA
Key Life: 3 Million
Keystrokes Dimensions: 116 x 73 x 45 mm
Net weight: 65 ± 10g
OS Support: Windows 2000 / XP / ME / Vista / 7 / 8 / 10 / Android / linux / Mac OS

FCC Warning

This device complies with part 15 of the FCC Rules. Operation is subject to the following two conditions: (1) This device may not cause harmful interference, and (2) this device must accept any interference received, including interference that may cause undesired operation.

Any Changes or modifications not expressly approved by the party responsible for compliance could void the user's authority to operate the equipment.

Note: This equipment has been tested and found to comply with the limits for a Class B digital device, pursuant to part 15 of the FCC Rules. These limits are designed to provide reasonable protection against harmful interference in a residential installation. This equipment generates uses and can radiate radio frequency energy and, if not installed and used in accordance with the instructions, may cause harmful interference to radio communications. However, there is no guarantee that interference will not occur in a particular installation. If this equipment does cause harmful interference to radio or television reception, which can be determined by turning the equipment off and on, the user is encouraged to try to correct the interference by one or more of the following measures:

- Reorient or relocate the receiving antenna.
- Increase the separation between the equipment and receiver.
- Connect the equipment into an outlet on a circuit different from that to which the receiver is connected.
- Consult the dealer or an experienced radio/TV technician for help.

The device has been evaluated to meet general RF exposure requirement. The device can be used in portable exposure condition without restriction.