



# garage door opener Manual

## Step 1: Confirm Color of Button

Check what color is the learn button  
behind the garage door opener



## Step 2: Programming Initiation

Press and Hold the III and II button at the same time till the led  
indicator flash 4 times and then release it



### Step 3: Choose Code Type

Within 8 seconds, Press and Release the remote control button(one of the 3 buttons) you wish to use, times according to the color of your learn button and the following chart

Press Times	Garage door opener type
1	Security+2.0 (Yellow Learning Button)
2	315.0042MHz Security+ (Purple Learning Button )
3	390.0102MHz Security+ (Red or Orange Learning Button )
4	390.0102MHz Billion Code (Green Learning Button)

**For example:** you want to set II button to be 315MHZ Security+ purple learning button , press and release II button 2 times, LED indicator light on and off, then press I or III button 1 time to fixed the II button code

#### Step 4: Garage Door Opener Learning

Press and immediately release the learn button,  
then learn LED will glow steadily for 30 seconds.

Within 30 seconds...

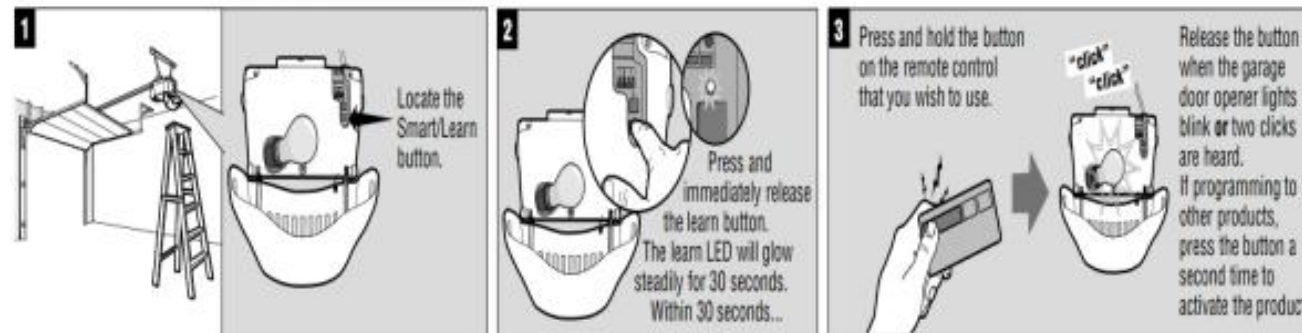


#### Step 5: Programming Complete

Press and hold the button on the remote control that you wish to use.  
Release the button when the garage door opener lights blink or two  
clicks are heard. If programming to other products, press the button a  
second time to activate the product.



#### PROGRAMMING THE REMOTE CONTROL



## **FCC Statement**

This equipment has been tested and found to comply with the limits for a Class B digital device, pursuant to part 15 of the FCC Rules. These limits are designed to provide reasonable protection against harmful interference in a residential installation. This equipment generates, uses and can radiate radio frequency energy and, if not installed and used in accordance with the instructions, may cause harmful interference to radio communications. However, there is no guarantee that interference will not occur in a particular installation. If this equipment does cause harmful interference to radio or television reception, which can be determined by turning the equipment off and on, the user is encouraged to try to correct the interference by one or more of the following measures:

- Reorient or relocate the receiving antenna.
- Increase the separation between the equipment and receiver.
- Connect the equipment into an outlet on a circuit different from that to which the receiver is connected.
- Consult the dealer or an experienced radio/TV technician for help.

Caution: Any changes or modifications to this device not explicitly approved by manufacturer could void your authority to operate this equipment.

This device complies with part 15 of the FCC Rules. Operation is subject to the following two conditions: (1) This device may not cause harmful interference, and (2) this device must accept any interference received, including interference that may cause undesired operation.

### **RF Exposure Information**

The device has been evaluated to meet general RF exposure requirement. The device can be used in portable exposure condition without restriction.