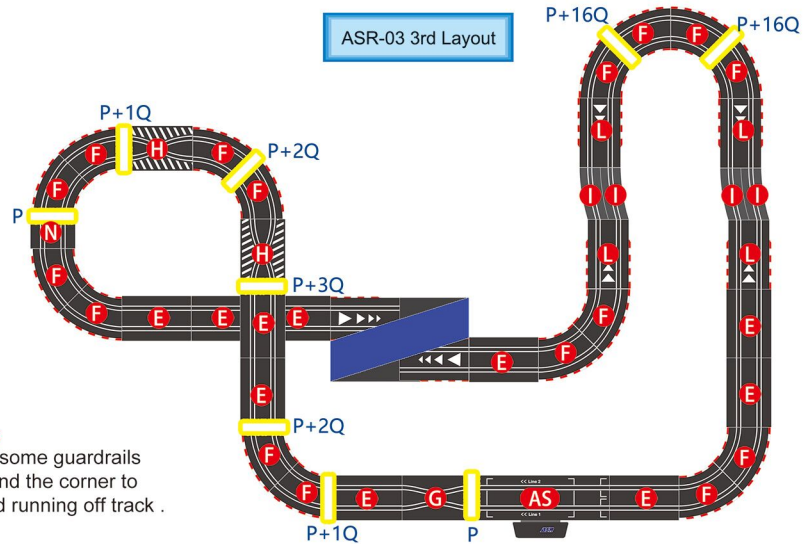


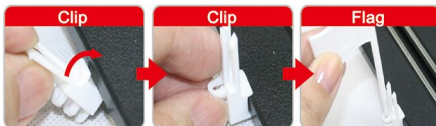
Layout

ASR-03 3rd Layout



Tips:
Use some guardrails
around the corner to
avoid running off track.

Accessories



The clips, guard rails and bridge are fitted by
tilting them upwards onto the edge of the track.

*Contents and colors may vary from shown above. Not every accessory included in this set.

Track support



Track assembly

Assembly



Join the track pieces together on a flat surface from
pinpoint to pinhole.

Disassembly



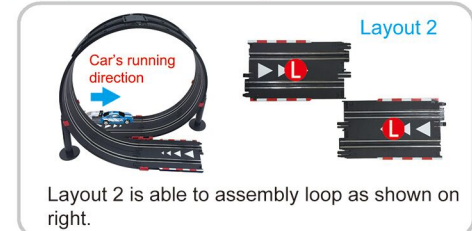
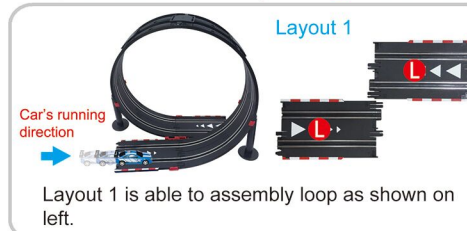
Press the circled areas below with both thumbs and
pull track pieces apart.



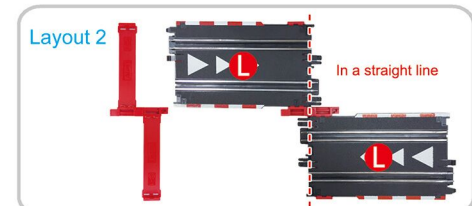
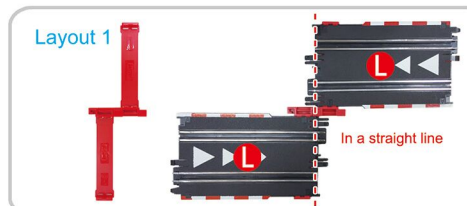
IMPORTANT! Do not bend the track or pull the track
pieces apart directly.

Loop assembly

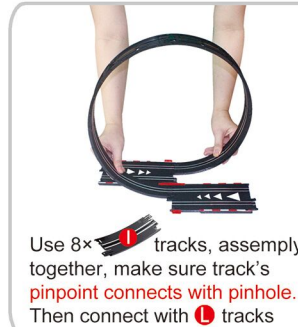
First, we need to confirm layout of **L** tracks. The layout is depended on car's running in and out direction.



Then, we use 2x **S** , let the AGM Logo side be facing up. buckle them together.
And then, use this complex to buckle under **L** tracks. Try to let tracks' edge be in a straight line.



Take **layout 2** for example, we illustrate the following steps.



Assemble 2 supports. Use 7 pcs of
Q , 1 pc of **U** , and 1 pc
of **P-2** for each support.

Layout 2 finish look



Buckle 2 supports to the arrow pointed places.



<Street challenge>

ASR-03 manual

Proper adult assembly required



Visit our website for more information

WWW.TOP-RACER.COM

Dear customer, thank you for your purchase. Please read user manual carefully before use. Please retain package for important service and safety information. You also can download E-manual from our website.

04.12.04.014
220311



143 ASR series

Contents



Licensed car ×2



Controller ×2



Smart device holder ×1



Adapter ×1



Guardrail ×12

Contents



AS ×1



E ×10

N ×1



F ×16



G ×1



H ×2

ES ×1



I ×20



L ×6



S ×2



T ×1



U ×2



P ×12



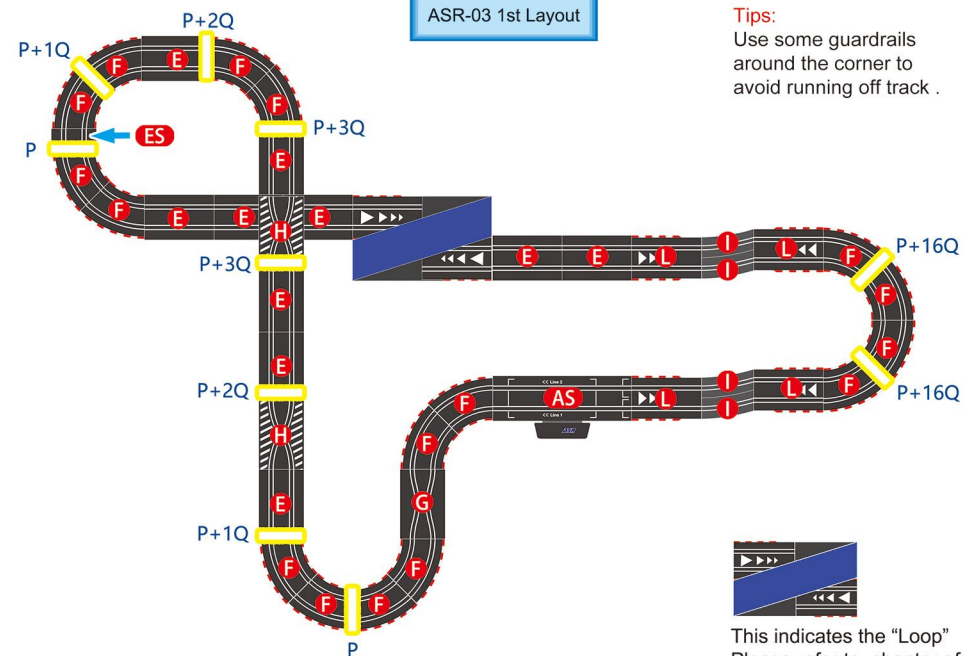
Q ×44



HN ×8

Layouts

ASR-03 1st Layout



This indicates the "Loop"
Please refer to chapter of
'Loop assembly' to
acquire its information



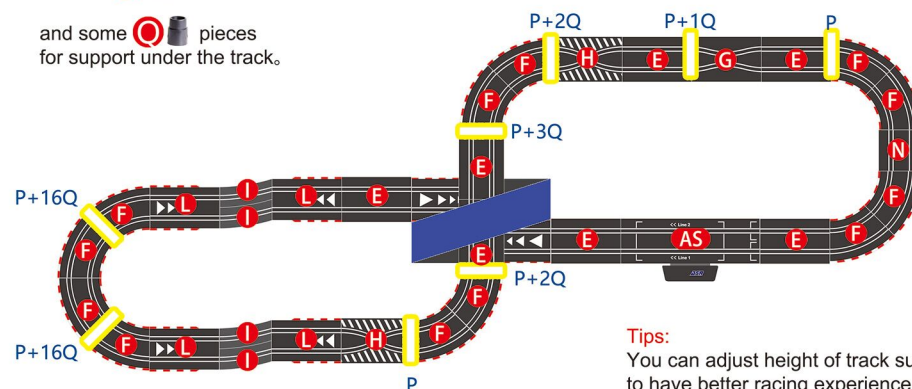
In the yellow areas below,

use 1 × P



and some Q pieces
for support under the track.

ASR-03 2nd Layout





FCC ID: 2A4WJ-ASRGD001

Note: This equipment has been tested and found to comply with the limits for a Class B digital device, pursuant to part 15 of the FCC rules.

These limits are designed to provide reasonable protection against harmful interference in a residential installation. This equipment generates, uses and can radiate radio frequency energy and, if not installed and used in accordance with the instructions, may cause harmful interference to radio communications.

However, there is no guarantee that interference will not occur in a particular installation. If this equipment does cause harmful interference to radio or television reception, which can be determined by turning the equipment off and on, the user is encouraged to try to correct the interference by one or more of the following measures:

- Reorient or relocate the receiving antenna.
- Increase the separation between the equipment and receiver.
- Connect the equipment into an outlet on a circuit different from that to which the receiver is connected.
- Consult the dealer or an experienced radio/TV technician for help.

Important: You are cautioned that changes or modifications not expressly approved by the party responsible for compliance could void the user's authority to operate the equipment.

RF warning for Portable device: The device has been evaluated to meet general RF exposure requirement. The device can be used in portable exposure condition without restriction.