

INSTRUCTION FOR USE



Product setup

1. You need an iPhone, iPad, or iPod touch with iOS 15.0 or iPadOS 15.0 or later and Apple-ID two-factor authentication turned on.
2. Turn on Bluetooth on your Apple device, and go to Settings→Privacy→turn on Location Services, then scroll down and tap Find My, allow location access and turn on Precise Location.
3. Open the Find My app, then select the items tab.
4. Click Add Item and then click Add Other Items.
5. After finding the item, press Connect and follow the onscreen instructions until the setup is successful.

Setup the Lost mode

1. When the tracker is a certain distance away from the host device, to mark an item as lost, you need to turn on Lost Mode.

2. Tap Items at the bottom of the screen, then tap the name of the lost item.

3. Below Lost Mode, tap Enable.

4. Follow the onscreen instructions to enter a phone number where you can be reached. To enter an email address instead, tap Use An Email Address. Then tap Activate.

*Make sure you allow notifications for the Find My app.

See your Tracker on the map

1. Open the Find My app, then tap the Items Tab.
2. Choose the tracker you want to locate in the items List.
3. If the tracker is within range of your device or the Find My network has recently detected it, you will see it on the map. An updated location and timestamp will appear under its name.
4. If the tracker isn't within range of your device or any devices in the Find My network, you will see its last known location and timestamp. To be notified when your tracker is within range of your device or detected by the Find My network, turn on Notify When Found under Notifications.

Play a sound

1. Open the Find My app on your iPhone, iPad or iPod touch, then tap the items Tab.
2. In the items list, choose the tracker that you want to play a sound.
3. Tap Play Sound. If your tracker is within Bluetooth range, it will play a sound.
4. To stop this sound before it ends automatically, tap Stop Sound.

Anti-stalking

1. If any tracker and other Find My network accessory products leave their owners and move with you for a period of time, you will receive a notification to your Apple device through the Find My app and be able to observe the route and duration.

2. These features are purpose-built to prevent unknowing attempts to track you, and if you feel your safety has been threatened, please contact local law enforcement*.

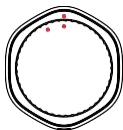
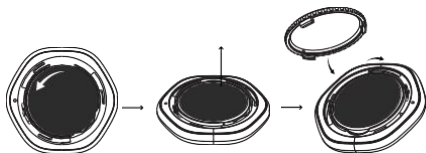
*This product include features to guard against unwanted tracking. They should not be used to track people, and should not be used to track property that does not belong to you. Using these products to track people without their consent is a crime in many countries and regions around the world.

Replace the battery

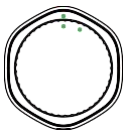
1. Press down on the polished metal cover and rotate counterclockwise to open.
2. Remove the old battery and replace a new CR2032 lithium 3V coin battery

with the positive side facing up, once the battery is successfully connected there will be prompt tone.

3. Replace the cover, making sure that the three tabs on the cover align with the three slots on the tracker. Then rotate the cover clockwise until it stops.



This position opens
the battery compartment



This position closes
the battery compartment

Product reset

1. After installing the battery, remove the battery immediately after hearing the prompt tone. After repeated operations for 5 times, there will be a different prompt tone when installing the battery indicating that it is being reset and enters the state where it can be added to a new device.

2.If the tracker is not working properly, please make sure the product is ready for setup, remove and replace the battery, bring the tracker closer to the device you want to connect to, or reset the product before trying to connect the tracker.

WARNING

1. Do not dismantle or modify the product;
2. Do not store the product in wet conditions;
3. Do not keep or use the product near heat sources;
4. Do not let water or any other liquid flows into the inside part of the product's interface. This would cause damages to the product;
5. Avoid direct sunlight. Keep away from heat source
6. Avoid high processor load in long running loops or while charging;
7. Ensure good ventilation while using;
8. In case of overheating, stop using the product

DISPOSAL OF ELECTRONIC PRODUCTS

1. Do not place the product as household waste;
2. Please dispose of discarded electronic products properly according to local regulations.
3. Vicar encourages you to participate in electronics recycling program.

WARRANTY CONDITIONS

1. For any defect, in the judgment of our technician, caused under normal use, we are responsible for repairing free of charges 12 months commencing from the date of purchase at the discretion of our company;
2. A valid warranty card and original purchase invoice must be presented upon request of warranty service
3. This warranty card shall not apply to the product if:

- (a) it has explicitly modified or repaired in any way by persons other than technicians of this company, or
 - (b) it has been damaged through misuse, malicious acts, negligence, inflow of any liquid, or
 - (c) losses or damages are caused by force majeure or natural disasters.
4. No alteration to this warranty card will be allowed;
5. The warranty terms and conditions are subject to change without prior notice;
6. Please retain your proof of purchase for warranty service
7. Please consult the dealer about the product compatibility with your cell phone/ PDA before purchase. Product specifications are subject to change without prior notice;
8. Please visit www.cyobd.com for latest product information.

SPECIFICATION

MODEL: DW01

Battery : CR2032

Bluetooth version :BLE 5.1

Compatibility :Compatible with Apple device only ; iPhone and iPod touch models with iOS 15.0 or later; iPad models with iPadOS 15.0 or later; iMac and MacBook with macOS 11 or later

Material: ABS

Size: 32.5mm

Weigh: 6.28g

CONTAINS:

1. Find my Tracker
2. Instruction manual and warranty card

FCC WARNING

This device complies with part 15 of the FCC Rules. Operation is subject to the following two conditions: (1) this device may not cause harmful interference, and (2) this device must accept any interference received, including interference that may cause undesired operation.

Any changes or modifications not expressly approved by the party responsible for compliance could void the user's authority to operate the equipment.

NOTE: This equipment has been tested and found to comply with the limits for a Class B digital device, pursuant to Part 15 of the FCC Rules. These limits are designed to provide reasonable protection against harmful interference in a residential

installation. This equipment generates, uses and can radiate radio frequency energy and, if not installed and used in accordance with the instructions, may cause harmful interference to radio communications.

However, there is no guarantee that interference will not occur in a particular installation. If this equipment does cause harmful interference to radio or television reception,

which can be determined by turning the equipment off and on, the user is encouraged to try to correct the interference by one or more of the following measures:

- Reorient or relocate the receiving antenna.
- Increase the separation between the equipment and receiver.

- Connect the equipment into an outlet on a circuit different from that to which the receiver is connected.
- Consult the dealer or an experienced radio/TV technician for help.

To maintain compliance with FCC's RF Exposure guidelines, This equipment should be installed and operated with minimum 20cm distance between the radiator and your body: Use only the supplied antenna.