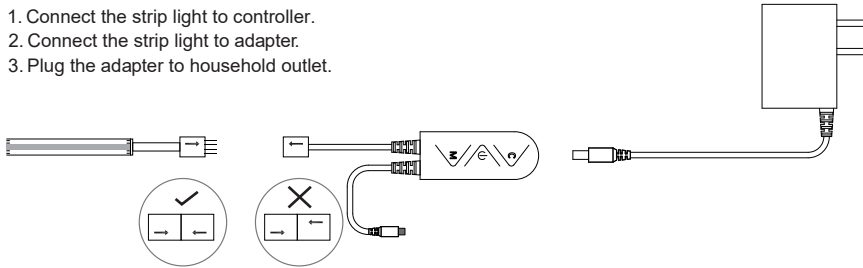


User Manual

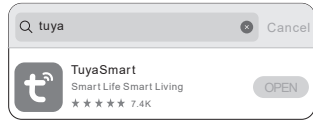
① Connecting Diagram

STEP a.

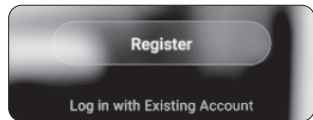
1. Connect the strip light to controller.
2. Connect the strip light to adapter.
3. Plug the adapter to household outlet.



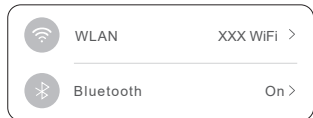
STEP b. Download Tuya A Apple store, Google Play.



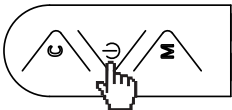
STEP c. Register account, and login in.



STEP d. Bluetooth ON.



STEP e. Holding controller button until strip light fast flashing or slow flashing.



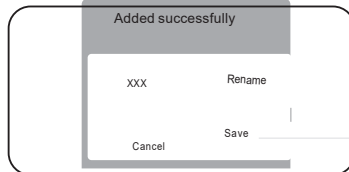
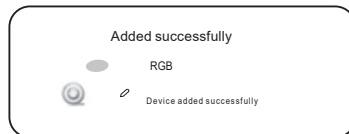
STEP f. Check the App, click "go to add".



STEP g. Adding device.



STEP h. The device added successfully, set the name that you easily remember.



② Installation Step

Step a.

Choose a dry, clean and smooth surface.



Knitted/Wool fabrics



Dusty wall



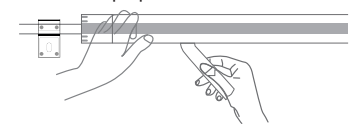
Rough plastic surface



Frosted glass

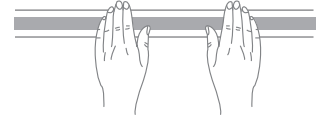
Step b.

Peel of the tape protective film and stick.



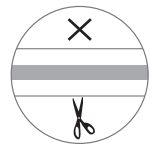
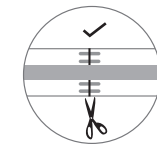
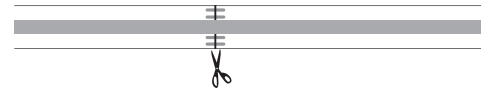
Step c.

Use self-adhesive buckles as needed, stick the strip light and press over it.



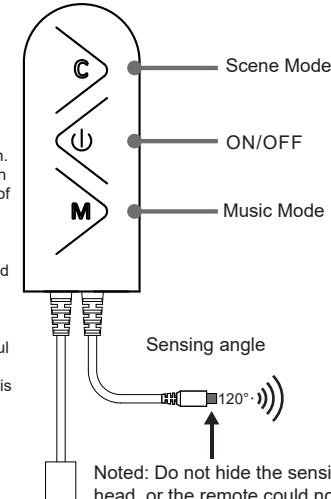
③ How to Cut LED Strip Light?

Cut the light strip in the middle of the pads or soldering point.



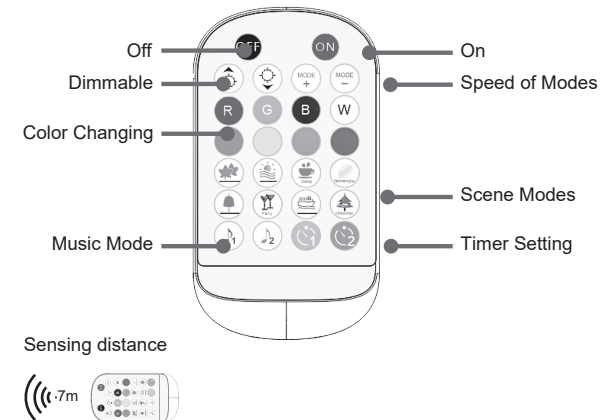
④ Controller Functions

a. Controller



Noted: Do not hide the sensing head, or the remote could not control the light.

b. IR Remote



FCC STATEMENT

This device complies with Part 15 of the FCC Rules. Operation is subject to the following two conditions: (1) This device may not cause harmful interference, and (2) This device must accept any interference received, including interference that may cause undesired operation. This equipment has been tested and found to comply with the limits for a Class B digital device, pursuant to part 15 of the FCC Rules. These limits are designed to provide reasonable protection against harmful interference in a residential installation. This equipment generates, uses and can radiate radio frequency energy and, if not installed and used in accordance with the instructions, may cause harmful interference to radio communications. However, there is no guarantee that interference will not occur in a particular installation. If this equipment does cause harmful interference to radio or television reception, which can be determined by turning the equipment off and on, the user is encouraged to try to correct the interference by one or more of the following measures:

- Reorient or relocate the receiving antenna.
- Increase the separation between the equipment and receiver.
- Connect the equipment into an outlet on a circuit different from that to which the receiver is connected.
- Consult the dealer or an experienced radio/ TV technician for help.

FCC Radiation Exposure Statement:
This equipment complies with FCC radiation exposure limits set forth for an uncontrolled environment. In order to avoid the possibility of exceeding the FCC radio frequency exposure limits, Human proximity to the antenna shall not be less than 20cm(8 inches)during normal operation. That changes or modifications not expressly approved by the party responsible for compliance could void the user's authority to operate the equipment.

⑤ Customer Service

Email: support@tata-zone.com

Warranty: 12- Month Limited Warranty