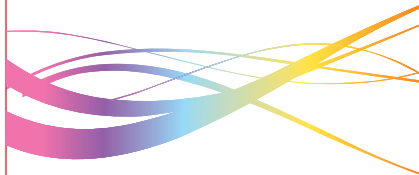


## USER'S INSTRUCTIONS

RGB LED strip light with 44keys  
IR remote control



### Specifications

LED type	RGB
Input voltage of adapter	AC100v-240v
Output voltage of adapter	DC 24v
Remote distance	Within 5m

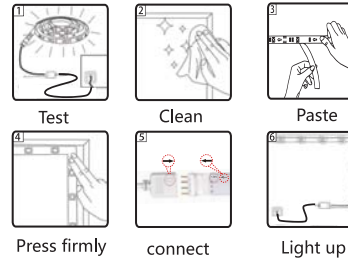
### Packing List

LED Strip Lights	2
Controller Box	1
44-key Remote Control	1
Power Adapter	1
Instruction Manual	1

### Preparation before installation

- Open the package and spread the strip straight. Please check whether the strip light appearance and all parts are in good condition. Then power the strip light to test whether it could light normally.
- Clean the surface of the object where the strip needs to be installed and keep it dry. Any dust and liquid will affect the stickiness of adhesive. The surface where the light adhere must be smooth and clean, otherwise the strip lights will fall off.

- Tear off the adhesive tape, paste the strip on the correct place at once time. Press the strip firmly from the Beginning to the end to remove the air from the strip and the surface of the object. (Notice: Do not move the strip light to other place after it is attached.)
- Considering the gravity of the strip light itself and other influence, you can place a clip to each section of the strip light to reinforce it. If there is a corner, place the clips on each side of the right angle.
- The installation is over, please connect the power with strip light. You can switch the light on/off and choose the color effect using the control box or remote or APP. Enjoy your new strip light!



### APP Control

- APP name is "Keepsmile". Please search for and install the application in Google play and Apple store or via the QR code on manual controller
- Connecting power with the device to let the light on first, then open the blue tooth of your smart phone.
- Then strip lights automatically connect to the APP. If you have any questions about the use of the APP, you can refer to the Setting-Guide in the upper right corner of the APP interface



Note: IOS 8.0 or Android 4.3 or later edition required. Your smart device should support bluetooth 4.0 or later version.

### Functions are listed as follows:

- Color:** Adjust the color and brightness, 16 million kinds of colors for your choice
- Music:** When you play the music, the light strip will sync with the music and change the color and flashing speed
- Mic:** Built-in high-sensitivity microphone, the light strip will change the color and speed according to the volume of sound source and the speed of speaking;
- Scene:** Multiple modes to choose from, including strobe, static, gradual, fade. You can choose the right mode according to the atmosphere
- Timer:** Set the timer, the light will turn on/off according to your schedule

### 44 keys Remote control

Please remove the control plastic sheet under the remote control before using the remote control.

	ON/OFF
	Pause/Run Lighting Mode
	Brightness Adjustment
	Color Change
	Color Degree Increase/Decrease
	DIY Mode
	3/7 Colors Jumping Change
	3/7 Colors Cross Fade
	Flash Mode
	Automatically Change Colors and Modes
	Speed of Color Changing
	Four music modes



Pull out

### Preparation before installation

- Please pay attention to anti-static during the installation and use of the product. Do not use sharp objects to touch the product, and avoid contact with strong chemicals such as strong acid and alkali.
- The contact part between the lights and the wall should not have hidden nails or metal conductive objects. If there are, please remove or avoid conductive objects in advance to prevent unnecessary short circuiting of the led strip
- The working voltage of the lighting is 100-240V, please don't make the working voltage of the lighting exceed the maximum allowable range. Please don't exceed the length more than 65.6ft on each port connection
- Make sure to turn off the power first, it must be cut along the cut line or it will cause the lights not to light up.
- Connect the controller and the light strip. Note that the arrow must be arrow-to-arrow when connecting.
- led strip is not waterproof. For safety reasons, please hide the controller and power supply away from the water during using.

We are looking forward to provide the perfect services for you, and will pay attention to your feedback. Should you have any question, please feel free contact us.



Thank you for purchasing our products, please read the instructions carefully before use

Our is a brand dedicated to the development of high-end Led light strips. The company is equipped with a professional Led light strips development team and production plant.

Led Strip Lights will definitely add a lot of fun to your life. We are always striving to provide customers with quality products and the most satisfactory service.

### WARNING

- The battery case and receiver do not immerse in water.
- The LED strip light kit do not immerse in fire.
- Children under age of 16 should use this product adult supervision



## **Warning Statement**

This device complies with part 15 of the FCC Rules. Operation is subject to the following two conditions: (1) This device may not cause harmful interference, and (2) this device must accept any interference received, including interference that may cause undesired operation.

Any Changes or modifications not expressly approved by the party responsible for compliance could void the user's authority to operate the equipment.

**Note:** This equipment has been tested and found to comply with the limits for a Class B digital device, pursuant to part 15 of the FCC Rules. These limits are designed to provide reasonable protection against harmful interference in a residential installation. This equipment generates uses and can radiate radio frequency energy and, if not installed and used in accordance with the instructions, may cause harmful interference to radio communications. However, there is no guarantee that interference will not occur in a particular installation. If this equipment does cause harmful interference to radio or television reception, which can be determined by turning the equipment off and on, the user is encouraged to try to correct the interference by one or more of the following measures:

- Reorient or relocate the receiving antenna.
- Increase the separation between the equipment and receiver.
- Connect the equipment into an outlet on a circuit different from that to which the receiver is connected.
- Consult the dealer or an experienced radio/TV technician for help.