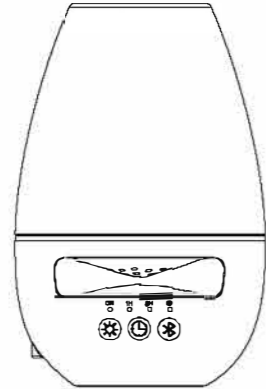
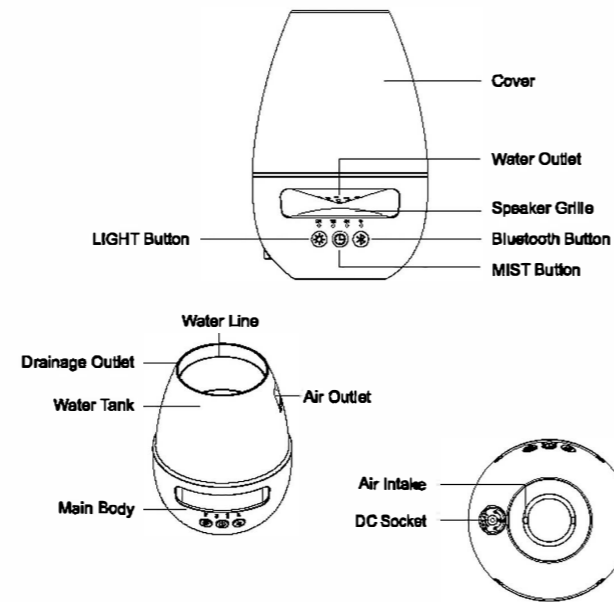


# Bluetooth Aroma Diffuser User Manual



Aroma Diffuser

This Aroma Diffuser uses Ultrasonic Technology to atomize the water and essential oil in the water tank, and produces a cool, humid and fragrant mist.

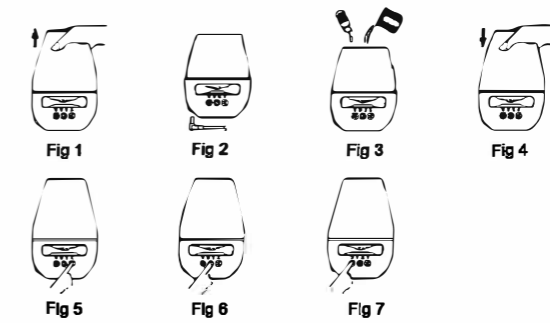


Aroma Diffuser

## OPERATION

1. Position the aroma diffuser upright, pull upwards to remove cover. (Fig.1)
2. Connect AC adapter power cord into the DC input jack at the base of the aroma diffuser. It is suggested to route cable via track provide. (Fig.2)
3. Please use measuring cup to pour water into the tank. DO NOT exceed the "MAX" water line 120ML. DO NOT use boiling water. DO NOT fill water when power is on. Vertically drip in essential oil (it is recommended to add 2-3 drops of essential oil for each 100ml water). (Fig.3)
4. Setting the cover back on the base. Aroma diffuser must NOT be operated without the cover. (Fig.4)
5. Plug the AC adapter plug into a household power outlet.
6. Connect the power, bluetooth indicator is flash and the machine emits "Bluetooth" Sound, the machine has entered the state to be connected.
7. Open bluetooth search to the machine "ZB-13" and click on the connection. After successfully connecting, bluetooth indicator is always on, and make a sound of "Bluetooth speakers connected successfully", bluetooth has been connected successfully. Press "X" button to cancel bluetooth connection, Indicator is flash, long press to turn off the music light. (Fig.5)
8. To turn on mist, press "M" button and choose your desired operation time (Timing : ON/3H/6H), aroma diffuser will automatically close the mist when it is working at the specified time. Press and hold "M" to turn off. (Fig.6)
9. Press "L" to switch on LED light. Brightness is adjustable through the following cycle, (Bright -> Dim -> Off). (Fig.7)
10. It is recommended to drain water from tank and keep dry when not in use.
11. Diffuser will automatically shut off when there is insufficient water.

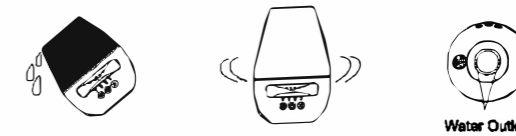
Aroma Diffuser



## ACCIDENTAL LEAKAGE

In the event of the unit being knocked over or tipped during use, please follow the steps below to avoid damage to the unit:

1. Unplug the unit and remove cover.
2. Pour out any remaining water from the water tank.
3. Tip the unit to drain water, and then air dry it for at least 24 hours.



Water Outlet

Aroma Diffuser

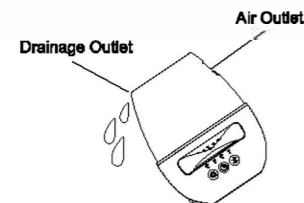
## ATTENTION

- The amount and intensity of mist will vary depending on water type, temperature and air currents.
- Automatically powers off when water runs out.
- Only use 100% natural essential oils. Using oils that contain chemical ingredients, flavors or impurities may cause damage to the product.

## MAINTENANCE

After using 5-6 times, or 3-5 days, please clean the product as follow:

1. Unplug the unit and remove cover.
2. Pour out any remaining water from the tank.
3. Use a small amount of dish soap to clean. Gently wipe with a soft cloth. Use a dry towel to dry the diffuser after it is clean.
4. NEVER use other acids or enzymes to clean the unit as they could react with the essential oil residue and cause harmful vapors to be released or cause a malfunction.



Aroma Diffuser

## PRECAUTIONS

Please read below to avoid any malfunction to the unit:

- If you are not a technician do not try to dismantle the diffuser to repair it. Contact the seller if repair is necessary.
- Do not turn power on when the tank is empty.
- Do not touch the atomization plate.
- Clean regularly as per Maintenance Instructions to avoid malfunction.
- Always unplug before maintenance.
- For hygiene reasons, after use, pour out the remaining water from the tank and wipe with a clean dry cloth.
- Only use the measuring cup to add water into the tank, do not fill water directly from the sink.
- Do not let mist come in direct contact with furniture, clothing, walls, etc.
- Keep out of direct sunlight.
- Always keep on a hard, stable, flat surface. Do not place on a towel, carpet or any other unstable surface.
- Keep away from electronic equipment, such as TV and Audio equipment.
- Wait 60 minutes between uses to avoid damage to the atomization piece.
- Do not use sparkling water. Only use tap water or mineral water.
- Never move product when it is working.
- Do not touch any part of the product with wet hands.
- Keep away from pets and small children.
- If the power cord is smoking or burning, unplug immediately!

Aroma Diffuser

## TROUBLESHOOTING

Please refer to the table below in the event of the product operating abnormally:

If product doesn't work well, please refer to the following points before requesting repairs:	
Will not switch on or switch off	<ul style="list-style-type: none"> <li>• Is there enough water in the tank? – Please add water to the tank.</li> <li>• Is the power cord connected properly? – Please disconnect, check cables and re-connect carefully.</li> </ul>
No mist or abnormal mist	<ul style="list-style-type: none"> <li>• Not enough water? or too much water? – Please add suitable amount of water in the tank, water must never be filled over 120ML (MAX) line.</li> <li>• Dirt or dust in the air intake on the underside of the base? – There is a fan on the underside of the base that is required to blow the mist out. If it gets clogged with dust or dirt it will prevent mist from coming out.</li> </ul>
Water leakage from product	<ul style="list-style-type: none"> <li>• Cover not set on the base properly? – Remove the cover and set it back on the base right above the buttons.</li> <li>• Low temperature or high humidity? – Under these conditions, the mist may condense quickly into water droplets.</li> </ul>

Aroma Diffuser

## SPECIFICATIONS

Dimensions	(D)112x (H)172MM
Weight(excluding adaptor)	Approx 382G
Power: Input/Output	AC100-240V 50/60Hz DC24V 500mA
Length of cord	Approx 170CM
Power	Approx 12W
Working Mode	ON/1H/3H
Tank Capacity	120ML
LED light	9PCS
Material	PP / ABS
Accessory	AC Adapter and User manual
Working frequency	2.4GHz

Aroma Diffuser

This device complies with part 15 of the FCC Rules. Operation is subject to the following two conditions:(1)This device may not cause harmful interference, and (2) this device must accept any interference received, including interference that may cause undesired operation.

This equipment has been tested and found to comply with the limits for a Class B digital device,

Pursuant to part 15 of the FCC Rules. These limits are designed to provide reasonable protection against harmful interference in a residential installation. This equipment generates, uses and can radiate radio frequency energy and, if not installed and used in accordance with the instructions, may cause harmful interference to radio communications. However, there is no guarantee that interference will not occur in a particular installation. If this equipment does cause harmful interference to radio or television reception, which can be determined by turning the equipment off and on, the user is encouraged to try to correct the interference by one or more of the following measures:

- Reorient or relocate the receiving antenna.
- Increase the separation between the equipment and receiver.
- Connect the equipment into an outlet on a circuit different from that to which the receiver is connected.
- Consult the dealer or an experienced radio/TV technician for help.

Caution: Any changes or modifications to this device not explicitly approved by manufacturer could void your authority to operate this equipment.

This equipment complies with FCC radiation exposure limits set forth for an uncontrolled environment. This equipment should be installed and operated with minimum distance 20cm between the radiator and your body.