



**36KM/H**

**RC POWER 4WD OFF ROAD CAR 2.4GHz RADIO SYSTEM**

**Caution:** This model is not a toy, it is designed for user over 8 years of age. Please use this instruction and the R/C system instruction at the same time.

**1:18**

WARNING: PLEASE READ THE INSTRUCTION MANUAL CLEARLY  
BEFORE OPERATING THE PRODUCT

**Any question, welcome to [devivaetoy@gmail.com](mailto:devivaetoy@gmail.com)**



## WARNINGS

### MEANING OF SPECIAL LANGUAGE

The following terms are used throughout the product literature to indicate various levels of potential harm when operating this product:

**WARNING:** Procedures, which if not properly followed, create the probability of property damage, collateral damage, and serious injury OR create a high probability of superficial injury.

**CAUTION:** Procedures, which if not properly followed, create the probability of physical property damage AND a possibility of serious injury.

**NOTICE:** Procedures, which if not properly followed, create a possibility of physical property damage AND little or no possibility of injury.

**WARNING:** Read the ENTIRE instruction manual to become familiar with the features of the product before operating. Failure to operate the product correctly can result in damage to the product, personal property and cause serious injury.

This is a sophisticated hobby product and NOT a toy. It must be operated with caution and common sense and requires some basic mechanical ability. Failure to operate this product in a safe and responsible manner could result in injury or damage to the product or other property. This product is not intended for use by children without direct adult supervision. Do not use with incompatible components or alter this product in any way outside of the instructions provided by us. This manual contains instructions for safety, operation and maintenance. It is essential to read and follow all the instructions and warnings in the manual, prior to assembly, setup or use, in order to operate correctly and avoid damage or serious injury.

**Age recommendation: Not for children under 8 years old, this is not a toy.**

### SAFETY PRECAUTIONS AND WARNINGS

As the user of this product, you are solely responsible for operating in a manner that does not endanger yourself and others or result in damage to the product or property of others.

This model is controlled by a radio signal subject to interference from many sources outside your control. This interference can cause momentary loss of control, so it is advisable to always keep a safe distance in all directions around your model as this margin will help avoid collisions or injury.

• Never operate your model with low transmitter batteries.

• Always operate your model in open spaces away from full-size vehicles, traffic and people.

• Never operate the model in the street or in populated areas for any reason.

• Carefully follow the directions and warnings for this and any optional support equipment (chargers, rechargeable battery packs, etc.) you use.

• Keep all chemicals, small parts and anything electrical out of the reach of children. Never lick or place any portion of the model in your mouth as it could cause serious injury or even death.

• Exercise caution when using tools and sharp instruments.

• Take care during maintenance as some parts may have sharp edges.

• Immediately after using your model, do NOT touch equipment such as the motor, electronic speed control and battery, because they generate high temperatures. You may burn yourself seriously touching them.

• Do not put fingers or any objects inside rotating and moving parts, as this may cause damage or serious injury.

• Always turn on your transmitter before you turn on the receiver in the car. Always turn off the receiver before turning your transmitter off.

• Keep the wheels of the model off the ground when checking the operation of the radio equipment.



**WARNING AGAINST COUNTERFEIT PRODUCTS:** Always purchase from DEVIVAE authorized dealer to ensure authentic high-quality product. DEVIVAE disclaims all support and warranty with regards, but not limited to, compatibility and performance of counterfeit products.

### WATER-RESISTANT VEHICLE WITH WATERPROOF ELECTRONICS

Your new DEVIVAE vehicle has been designed and built with a combination of waterproof and water-resistant components to allow you to operate the product in many "wet conditions," including puddles, creeks, wet grass, snow and even rain.

While the entire vehicle is highly water-resistant, it is not completely waterproof and your vehicle should NOT be treated like a submarine. The various electronic components used in the vehicle, such as the Electronic Speed Control (ESC), servo(s) and receiver are waterproof, however, most of the mechanical components are water-resistant and should not be submerged.

Metal parts, including the bearings, hinge pins, screws and nuts, as well as the contacts in the electrical cables, will be susceptible to corrosion if additional maintenance is not performed after running in wet conditions. To maximize the long-term performance of your vehicle and to keep the warranty intact, the procedures described in the "Wet Conditions Maintenance" section below must be performed regularly if you choose to run in wet conditions. If you are not willing to perform the additional care and maintenance required, then you should not operate the vehicle in those conditions.



**CAUTION:** Failure to exercise caution while using this product and complying with the following precautions could result in product malfunction and/or void the warranty.

#### General Precautions

• Read through the wet conditions maintenance procedures and make sure that you have all the tools you will need to properly maintain your vehicle.

• Not all batteries can be used in wet conditions. Consult the battery manufacturer before use. Caution should be taken when using Li-Po batteries in wet conditions.

• Most transmitters are not water-resistant. Consult your transmitter's manual or the manufacturer before operation.

• Never operate your transmitter or vehicle where lightning may be present.

• Do not operate your vehicle where it could come in contact with salt water (ocean water or water on salt-covered roads), contaminated or polluted water. Salt water is very conductive and highly corrosive, so use caution.

• Even minimal water contact can reduce the life of your motor if it has not been certified as water-resistant or waterproof. If the motor becomes excessively wet, apply very light throttle until the water is mostly removed from the motor. Running a wet motor at high speeds may rapidly damage the motor.

• Driving in wet conditions can reduce the life of the motor. The additional resistance of operating in water causes excess strain. Alter the gear ratio by using a smaller pinion or larger spur gear. This will increase torque (and motor life) when running in mud, deeper puddles, or any wet conditions that will increase the load on the motor for an extended period of time.

#### Wet Conditions Maintenance

• Remove the battery pack(s) and dry the contacts. If you have an air compressor or a can of compressed air, blow out any water that may be inside the recessed connector housing.

• Remove the tires/wheels from the vehicle and gently rinse the mud and dirt off with a garden hose. Avoid rinsing the bearings and transmission.

**NOTICE:** Never use a pressure washer to clean your vehicle.

• Use an air compressor or a can of compressed air to dry the vehicle and help remove any water that may have gotten into small crevices or corners.

• Spray the bearings, drive train, fasteners and other metal parts with a water-displacing light oil or lubricant. Do not spray the motor.

• Let the vehicle air dry before you store it. Water (and oil) may continue to drip for a few hours.

• Increase the frequency of disassembly, inspection and lubrication of the following:


- Front and rear axle hub assembly bearings.
- All transmission cases, gears and differentials.
- Motor—clean with an aerosol motor cleaner and re-oil the bushings with lightweight motor oil.


• Drain any water that has collected in the tires by spinning them at high speed. With the body removed, place the vehicle upside down and pull full throttle for a few short bursts until the water has been removed.



**NOTICE:** This appliance is not intended for use by persons with reduced physical, sensory or mental capabilities, or lack of experience and knowledge, unless they have been given supervision or instruction concerning use of the appliance by a person responsible for their safety.


**BATTERY CHARGER SAFETY PRECAUTIONS AND WARNINGS**


 **DANGER:** To reduce the risk of fire or electric shock, carefully follow these instructions.

 **WARNING:** Before charging, read the instructions. Failure to follow all instructions may result in excessive heat, FIRE, and ultimately injury and property damage.

- For indoor use, do not expose to rain.
- Never leave charging batteries unattended. Disconnect charger if batteries become hot or puff.
- Never charge batteries overnight.
- Never leave batteries near fire, water, or in extreme temperatures.
- Never impact or alter the batteries.
- Never leave the charger and battery unattended during use.
- Never attempt to charge dead, damaged or wet battery packs.
- Never attempt to charge a battery pack containing different types of batteries.
- Never allow children under 8 years of age to charge battery packs.
- Never charge batteries in extremely hot or cold places or place in direct sunlight.
- Never charge a battery if the cable has been pinched or shorted.
- Never connect the charger if the power cable has been pinched or shorted.
- Never attempt to dismantle the charger or use a damaged charger.
- Never attach your charger to both an AC and a DC power source at the same time.
- Never connect the input jack (DC input) to AC power.
- Always use only rechargeable batteries designed for use with this type of charger in the correct programming mode.
- Always inspect the battery before charging.
- Always keep the battery away from any material that could be affected by heat.
- Always monitor the charging area and have a fire extinguisher available at all times.
- Always end the charging process if the battery becomes hot to the touch or starts to change form (swell) during the charge process.
- Always connect the charge cable to the charger first, then connect the battery to avoid short circuit between the charge leads. Reverse the sequence when disconnecting.
- Always connect the positive red leads (+) and negative black leads (-) correctly.

- Always disconnect the battery after charging, and let the charger cool between charges.
- Always charge in a well-ventilated area.
- Always terminate all processes and contact us if the product malfunctions.
- Charge only rechargeable batteries. Charging non-rechargeable batteries may cause the batteries to burst, resulting in injury to persons and/or damage to property.
- The socket-outlet shall be installed near the equipment and shall be easily accessible.

 **WARNING:** Never leave charger unattended, exceed maximum charge rate, charge with non-approved batteries or charge batteries in the wrong mode. Failure to comply may result in excessive heat, fire and serious injury.

 **CAUTION:** Use only with compatible batteries in the correct program mode. Not doing so can result in excessive heat and other related product malfunctions, which can lead to user injury or property damage. Please contact DEVIVAE or an authorized retailer with compatibility questions.

**FCC INSTRUCTIONS:**

**CAUTION:**  
Changes or modifications not expressly approved by the party responsible for compliance could void the user's authority to operate the equipment.

**NOTE:**  
This equipment has been tested and found to comply with the limits for a Class B digital device, pursuant to part 15 of the FCC Rules. These limits are designed to provide reasonable protection against harmful interference in a residential installation. This equipment generates, uses and can radiate radio frequency energy and, if not installed and used in accordance with the instructions, may cause harmful interference to radio communications. However, there is no guarantee that interference will not occur in a particular installation. If this equipment does cause harmful interference to radio or television reception, which can be determined by turning the equipment off and on, the user is encouraged to try to correct the interference by one or more of the following measures:

1. Reorient or relocate the receiving antenna.
2. Increase the separation between the equipment and receiver.
3. Connect the equipment into an outlet on a circuit different from that to which the receiver is connected.
4. Consult the dealer or an experienced radio/TV technician for help.

This device complies with Part 15 of the FCC Rules. Operation is subject to the following two conditions:  
1.This device may not cause harmful interference, and  
2.This device must accept any interference received, including interference that may cause undesired operation.



**CONTENTS**

Safety and caution	2-4
FCC Instructions / Contents	5
Vehicle and controller parts	6-8
Remote control battery installation	9
Control the vehicle and installation the electronic part	10-15
Assemble exploded view	16-19
Sale parts view	20-21
Troubleshooting	22-23

## CONTENTS

Included the following parts  
■ Shell(To the actual product)



■ Chassis (To the actual product)



■ Controller



■ USB Charger



■ 7.4V Battery\*2



■ Instruction manual



■ Small Cross Wrench



■ Screwdriver



■ R type bolt \*8

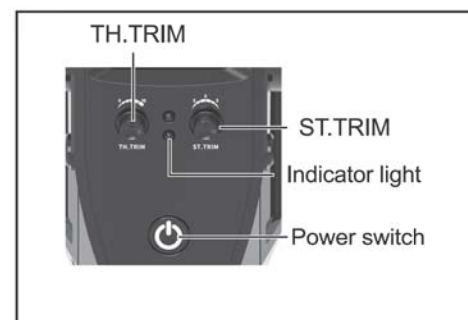


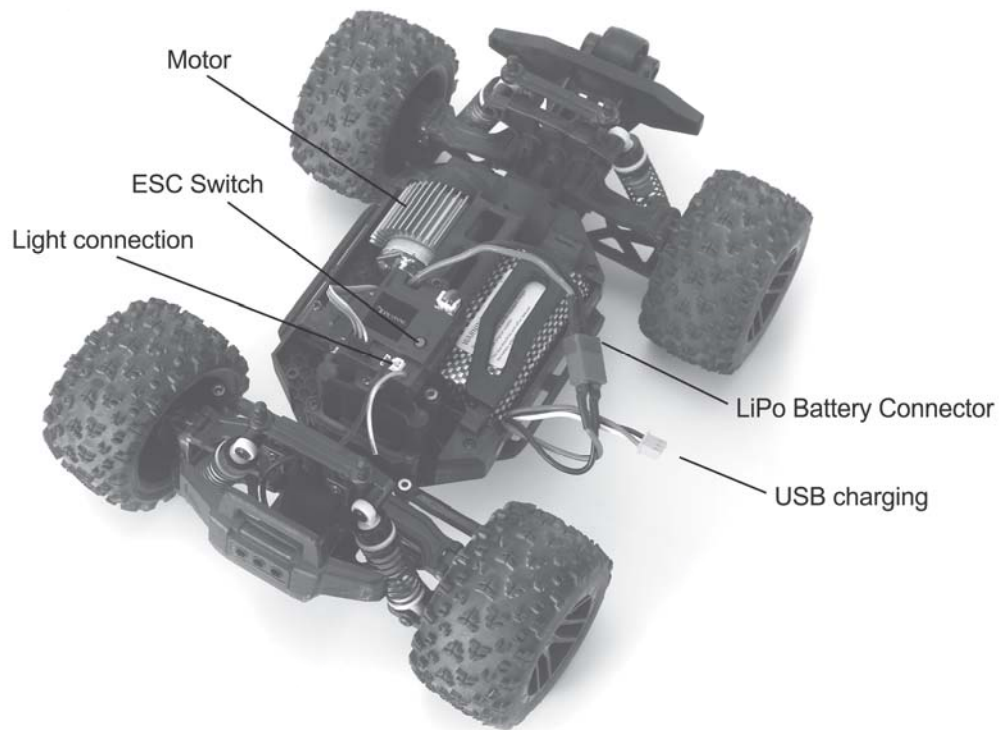
## VEHICLE AND CONTROLLER PARTS

### Controller function introduce

Our company has been configured a new-style transmitter for model car(Available option). Please read the instruction manual carefully.The following is the transmitter's description of all functions.

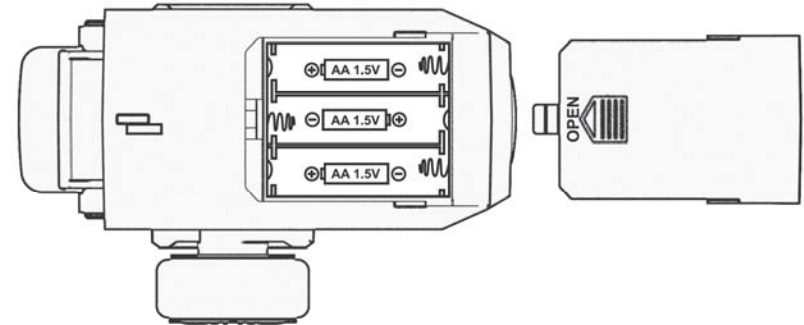
### ■ Controller



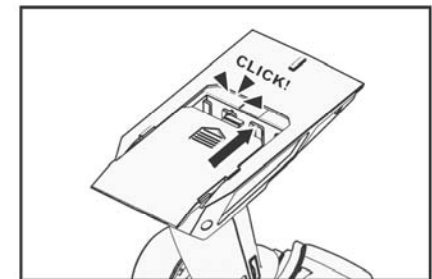
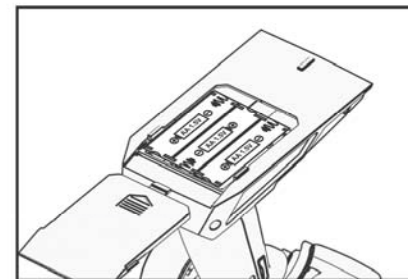
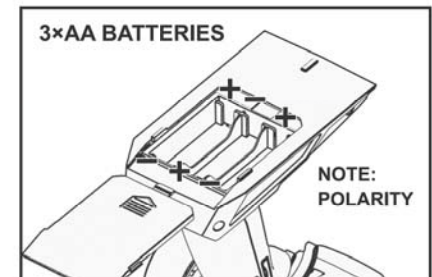
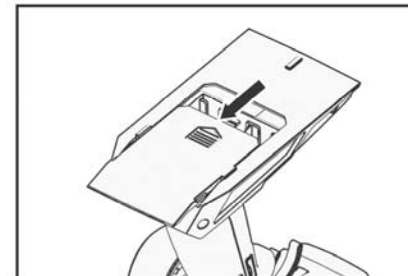


## INSERT BATTERIES INTO THE CONTROLLER

Observe correct polarity when inserting 3\*1.5V AA batteries.



## INSTALL AA BATTERIES IN CONTROLLER



CAUTION: Only charge rechargeable batteries. Charging non-rechargeable batteries may cause the batteries to burst, resulting in injury to persons and/or damage to property.

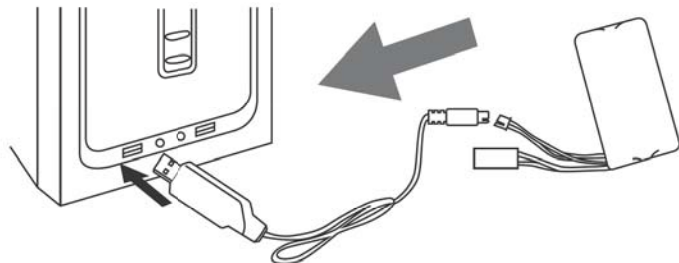


CAUTION: Risk of explosion if battery is replaced by an incorrect type. Dispose of used batteries according to national regulations.



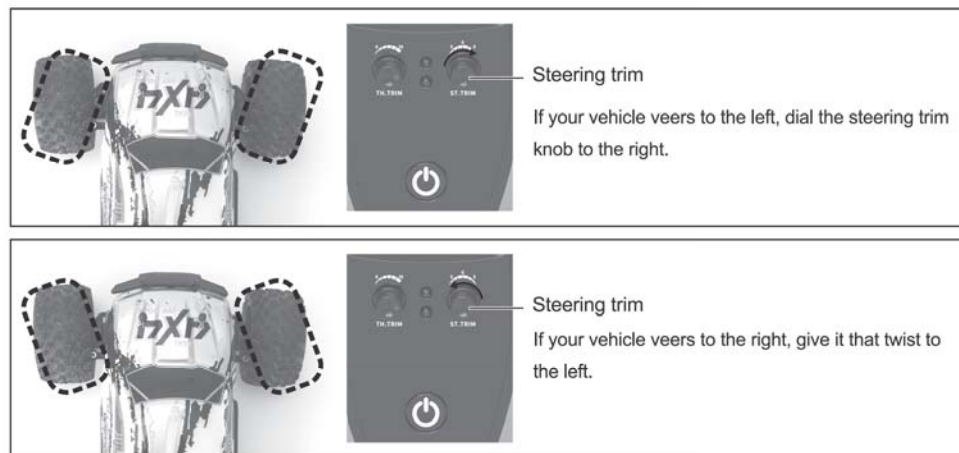
## CHARGING THE BATTERY

Connect the battery and USB cable, plug the USB cable into the power socket and charge it for about 2 hours. When charging the LED light will flash.



## STEERING TRIM-1

Trim adjustment allows you to finely tune the inputs from your transmitter. It's the dial you reach for when your RC car isn't tracking straight. The steering trim is what helps navigate the RC car in a straight line.



## THROTTLE TRIM-2

Adjust the max running speed you like.



Rotate the "TH.TRIM" button (Throttle trim) anti-clockwise to turn down the maximum running speed.



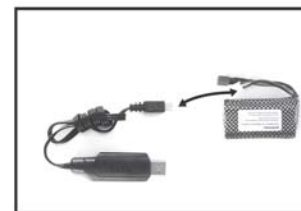
Rotate the "TH.TRIM" button (Throttle trim) clockwise to increase the maximum running speed.

## PREPARATIONS FOR DRIVING

### STEP-1: Battery charging

1. Carefully connect the original USB cable with the battery, and use an adapter of output 5V 2A to charge the battery. When the battery is being charged, the red light and the green light flash. After fully charged, the green light will become steady.

NOTE: You must plug the USB line into the USB port/adapter first before plugging the battery into the USB charging cable.



2. The charging process takes approximately 2 hours. For safety reasons, never charge the battery over 4 hours.

3. Disconnect the battery from the charger and reconnect the battery to the speed control.

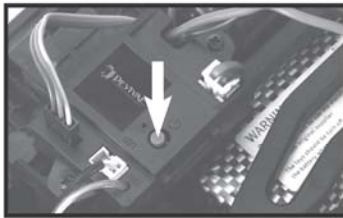
## DRIVING OPERATION

- Push the power switch button to turn the controller on (A). The LED lights are blinking, which means the car and controller are pairing.



(A)

- Push the "ESC" switch to power on the car (B).



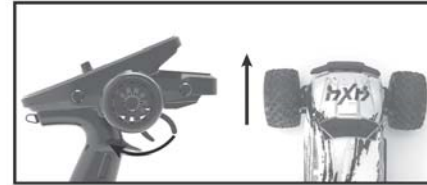
(B)

- When light becomes solid, it shows pairing is successfully done.

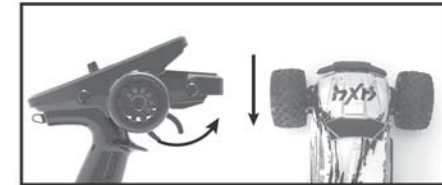
## DRIVING THE VEHICLE

- When not to play, push the button again to turn off the controller, and remove the battery in time to ensure the safety.

NOTE: Make sure the car and controller are pairing correctly and successfully before driving.



1. Move forward: Pull down the throttle to drive forward.



2. Move backward: Push the throttle forward to make the car go back.



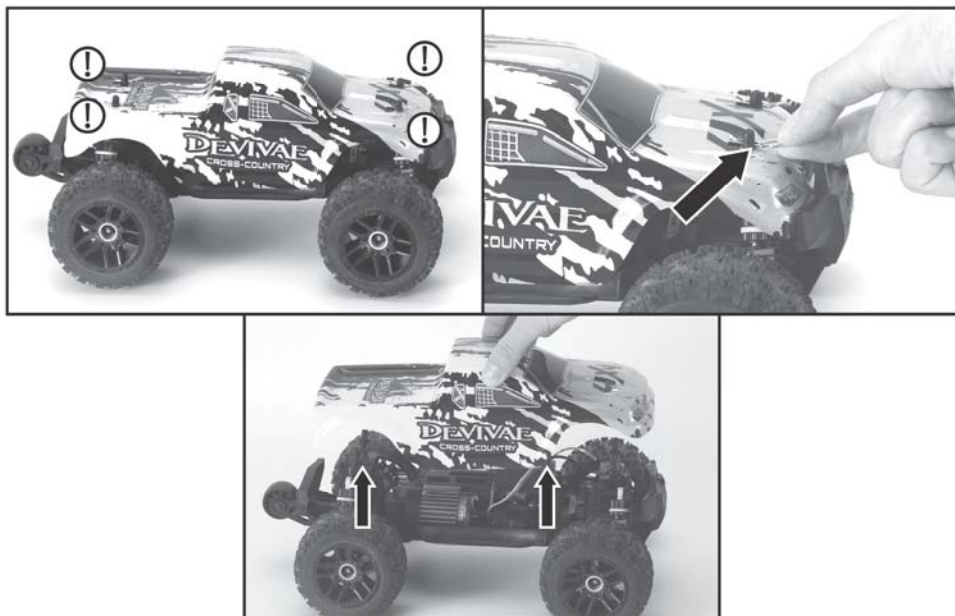
3. Turn left: Rotate the steering wheel anti-clockwise to make the car turn left.



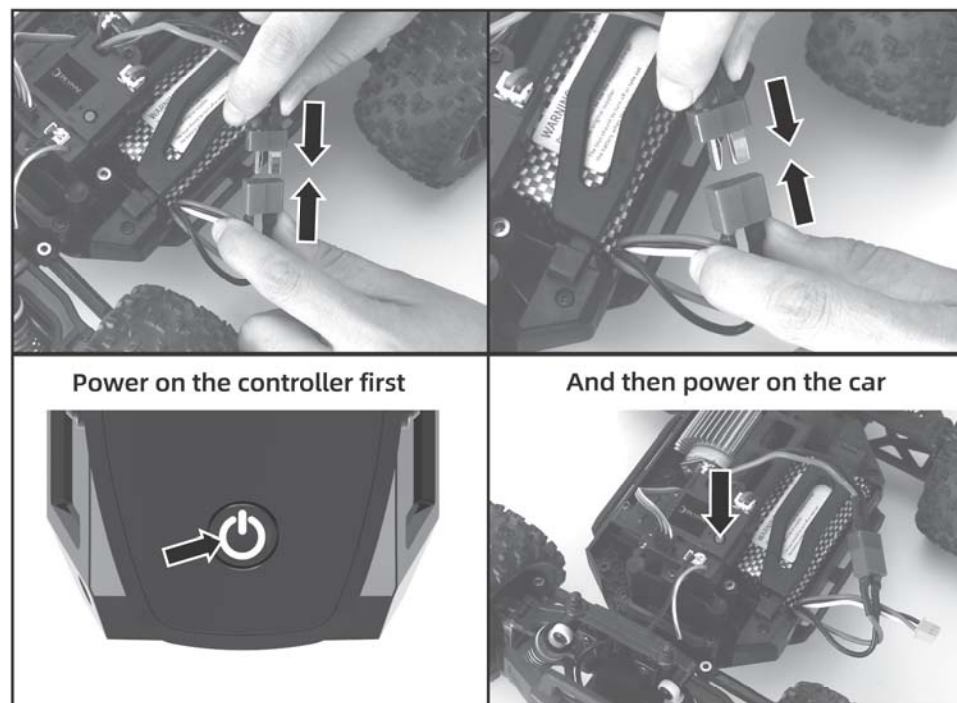
4. Turn right: Rotate the steering wheel clockwise to make the car turn right.

NOTE: When the car battery becomes low, the car's speed will become slow then stop moving since this car is equipped with a LVC (Low Voltage Cutoff) to protect the battery.

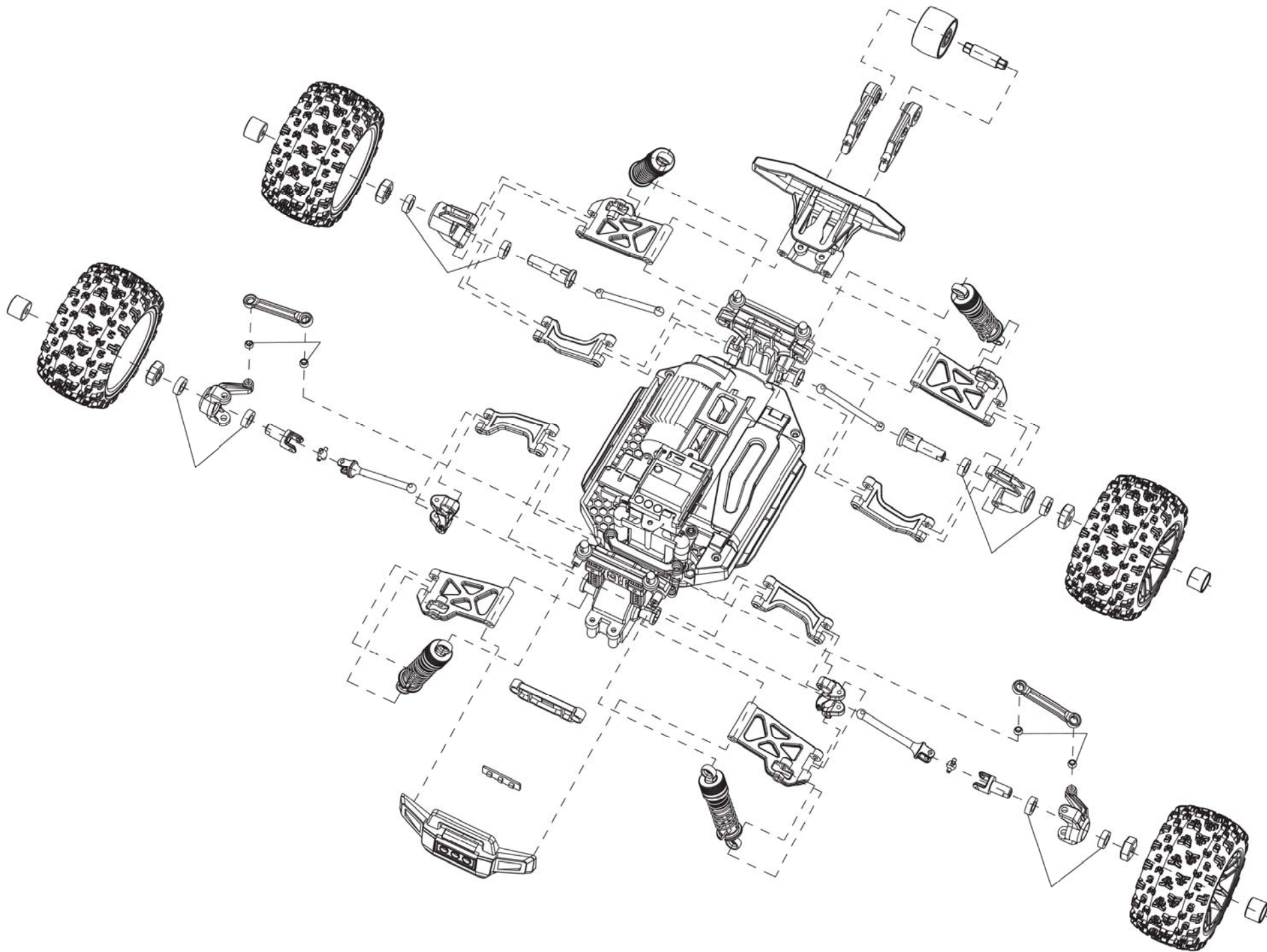
## OPEN THE BODY OF THE CAR

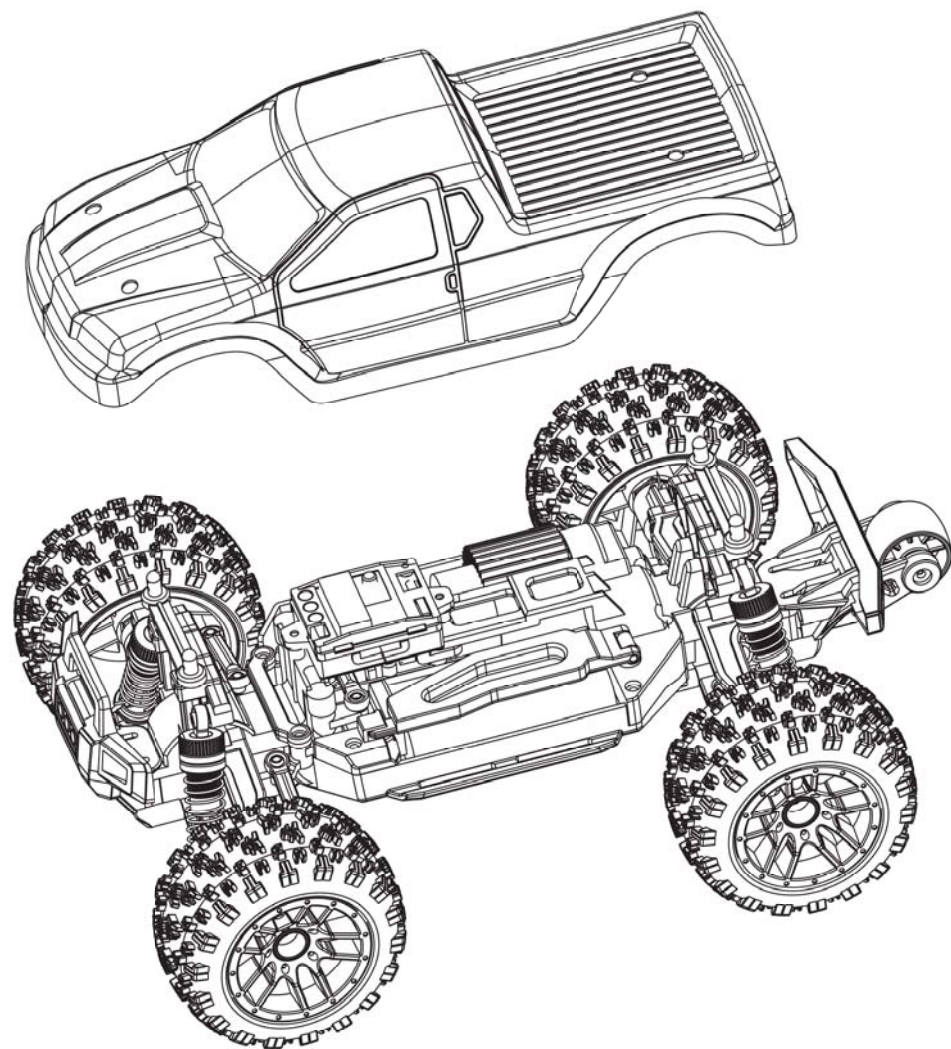
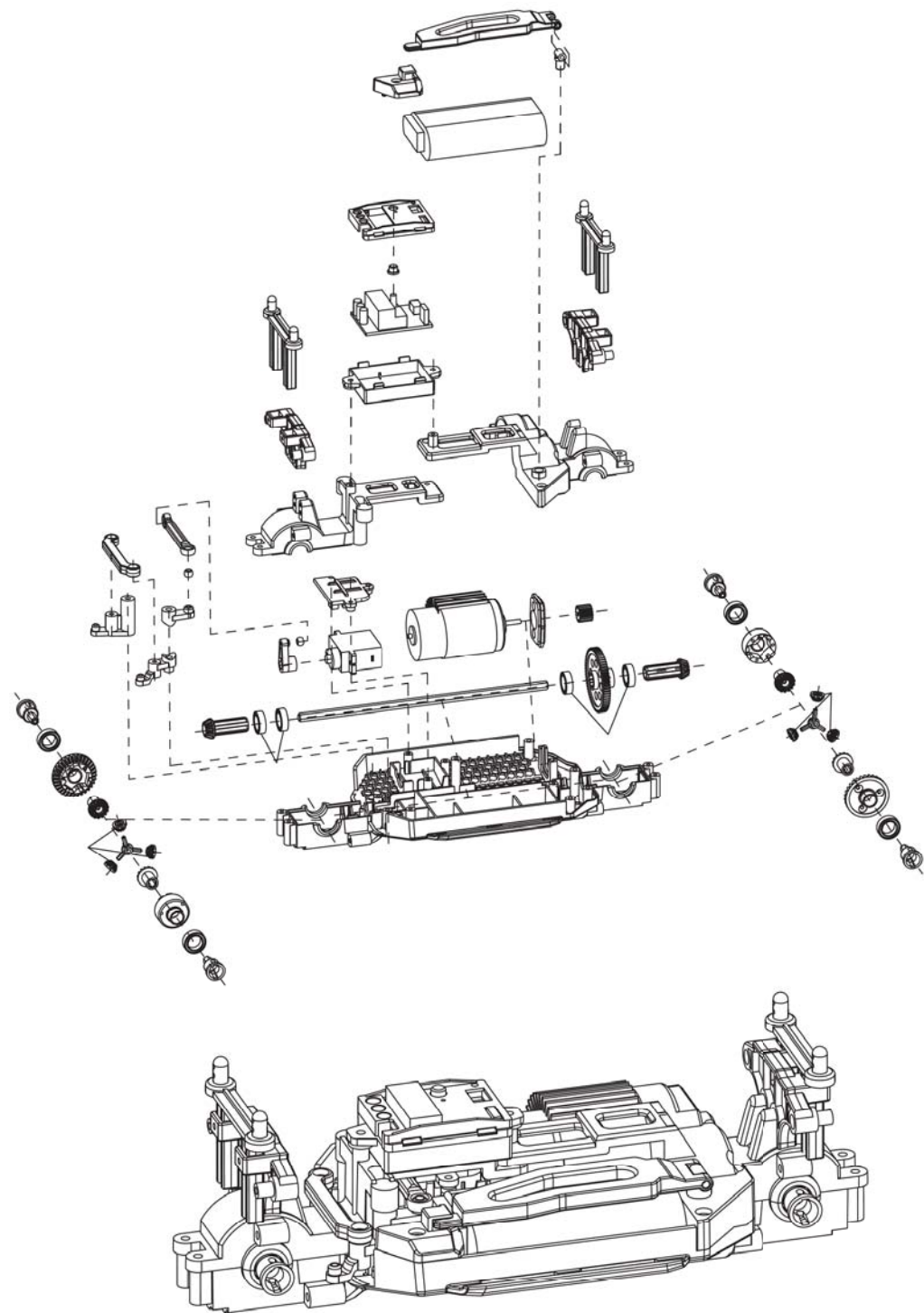


## CONNECT ESC AND POWER ON









## SALE PARTS VIEW



3\*8PB half tooth screw



2.6\*8PB screw



2.6\*4PB screw



3\*12 wire



2.3\*6PB screw



2.3\*15 screw



2.5\*8PB 6



2.6\*6PB 6



2.5\*19PB half tooth screw



slid resistant nut



Hexagonal socket shaft



Φ 7.5\*12.5\*4 Bearing



Φ 10\*14.5\*3.5 Copper bearing



Φ 2.5\*50 Iron rocker shaft



Absorber



Battery cover button



Steering linkage assembly



Steering rod



Motor colling fin



Steering link



Rear cup ball head rod



Front cup ball head rod



Bottom wheel



Differential



9 Grams Digital Servo



Hub cover



Shell supports the T-shaped parts



Shock tower

## SALE PARTS VIEW



Steering gear cover



Rear gearbox cover



Front gearbox cover



Before the collision



After the collision



Front part upper and lower swing arm assembly



Rear part upper and lower swing arm assembly



Drive shaft assembly



Receiving plate



380 High-speed motor



Tire



7.4V Li-ion battery



7.4V USB Charger



Remote control



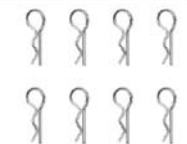
Car body



Socket wrench



3mm Cross tip screwdrivers



R type bolt



## TROUBLESHOOTING

PROBLEM	POSSIBLE CAUSE	SOLUTION
Vehicle does not move	Batteries are incorrectly installed in transmitter	Check transmitter batteries and refit - see model/transmitter manual
	Weak, damaged or no drive battery in model	Install fresh, charged batteries
	Frayed or broken motor or ESC wires	Check condition, reconnect and insulate
	ESC has shut down due to overheating	Stop driving and allow ESC or motor to cool down
	Electric motor is damaged	Replace with new unit
	Waterproof ESC is damaged	Replace with new unit
	Possible damage to transmission/drive-line	Check components and replace
	ESC low voltage cutoff has activated to protect batteries	Remove drive battery, leave to cool down if necessary, and re-charge
Vehicle does not reverse	Waterproof ESC is damaged	Replace with new unit
Vehicle drives without input	Transmitter throttle trim incorrectly set	Throttle trim needs to be set to zero/neutral - see model/transmitter manual
	Neutral throttle position of ESC Unit incorrect	Re calibrate the ESC
Short runtime	Battery damaged or not fully charged	Check condition, replace or recharge
	Electric motor dirty or damaged	Clean, check condition and/or replace
	Incorrect ESC battery mode - voltage cutoff too high for the battery you are using	Adjust the battery mode of the unit
Sluggish performance	Battery damaged or not fully charged	Check condition, replace or recharge
	Transmitter throttle trim incorrectly set	Throttle trim needs to be set to zero/neutral - see model/transmitter manual
	Electric motor dirty or damaged	Clean, check condition and/or replace
	Drivetrain dirty or damaged	Clean, check condition and/or replace

No control of vehicle or short range	Transmitter batteries are weak or fitted incorrectly	Check transmitter batteries and refit - see model/transmitter manual
	Servo wires to receiver loose or connected incorrectly	Reinstall signal wires to receiver
	Transmitter and receiver unit are not 'bound' correctly	Transmitter and receiver need to be bound - see model/transmitter manual
Steering/Throttle operation intermittent	ESC has shut down due to overheating	Stop driving and allow ESC or motor to cool down
	Transmitter and receiver unit are not 'bound' correctly	Check for sources of interference and re-bind transmitter/receiver - see transmitter manual
Vehicle wanders left/right without steering input	Steering trim setting out	Adjust steering trim - see model/transmitter manual
	Damaged steering components	Check components and replace
	Drivetrain dirty or damaged	Clean, check condition and/or replace
Steering/Throttle operation reversed	Relevant channel of transmitter is reversed	Reverse relevant channel on transmitter - see model/transmitter manual
	Check that the wires from the ESC to the motor are connected correctly	Reconnect in the correct orientation (red to red and black to black) ensuring fit is tight; if not pinch female connector with pliers
Limited steering angle	Transmitter steering dual-rate set incorrectly	Adjust transmitter dual-rate - see transmitter manual
	Damaged steering components	Check components and replace

Made in China  
Model No.:XDKJ-022 / ZWD-005